

GENERAL NOTES

THESE INSTALLATION INSTRUCTIONS ARE A SUPPLEMENT TO THE APPROVED SHOP DRAWINGS. USE IN CONJUNCTION WITH THOSE DRAWINGS.

1 - HANDLING, STORING AND PROTECTING ALUMINUM MATERIAL

THE FOLLOWING PRECAUTIONS ARE RECOMMENDED TO ASSURE EARLY ACCEPTANCE OF YOUR PRODUCTS AND WORKMANSHIP.

A - HANDLE CAREFULLY - DO NOT DROP FROM THE TRUCK. STACK WITH ADEQUATE SEPARATION SO MATERIAL WILL NOT RUB TOGETHER. STORE OFF THE GROUND. PROTECT AGAINST ELEMENTS AND OTHER CONSTRUCTION TRADES.

B - KEEP MATERIAL AWAY FROM WATER, MUD AND SPRAY - PREVENT CEMENT, PLASTER AND OTHER MATERIALS FROM DAMAGING THE FINISH.

C - PROTECT THE MATERIALS AFTER ERECTION, BY WRAPPING WITH KRAFT PAPER - OR BY ERECTING VISQUEEN/CANVAS SPLATTER SCREENS. CEMENT, PLASTER, TERRAZZO AND OTHER ALKALINE MATERIALS ARE VERY HARMFUL TO THE FINISH AND SHOULD BE REMOVED WITH WATER AND MILD SOAP BEFORE SETTING OCCURS. UNDER NO CIRCUMSTANCES ALLOW THESE MATERIALS TO TO DRY OR PERMANENT STAINING WILL OCCUR.

2 - GENERAL RULES

THE FOLLOWING PRACTICES ARE RECOMMENDED FOR ALL WALL INSTALLATIONS.

A - READ COMPLETE INSTRUCTIONS BEFORE ORDERING GLASS OR FABRICATING MATERIAL.

B - CHECK SHOP DRAWINGS TO BECOME THOROUGHLY FAMILIAR WITH THE JOB.

C - ALL MATERIALS ARE TO BE INSTALLED PLUMB, LEVEL AND TRUE.

D - ALL WORK SHOULD START FROM ESTABLISHED BENCH MARKS AND COLUMN CENTER LINES ESTABLISHED BY THE ARCHITECTURAL DRAWINGS AND THE GENERAL CONTRACTOR.

E - THE SEQUENCE OF ERECTION SHOULD BE COORDINATED WITH THE JOB SUPERINTENDENT SO DELAYS ARE PREVENTED AND RISK OF MATERIAL DAMAGE IS MINIMIZED. IF PRESETTING OF ANCHORAGE IS REQUIRED, COORDINATE WITH GENERAL CONTRACTOR AND SUPERVISE LOCATION.

F - MAKE CERTAIN CONSTRUCTION WHICH WILL RECEIVE YOUR MATERIALS IS ACCORDING TO THE CONTRACT DOCUMENTS. IF NOT, NOTIFY THE GENERAL CONTRACTOR IN WRITING AND RESOLVE DIFFERENCES BEFORE PROCEEDING WITH YOUR WORK.

G - INSULATE ALL ALUMINUM TO BE PLACED DIRECTLY IN CONTACT WITH THE MASONRY OR INCOMPATIBLE MATERIALS WITH A HEAVY COAT OF ZINC CHROMATE OR BITUMINOUS PAINT.

H - FOLLOW KAWNEER INSTALLATION AND GLAZING INSTRUCTIONS.

J - CHECK ALL MATERIAL ON ARRIVAL FOR QUANTITY.

K - BE SURE TO HAVE ALL THE MATERIALS AND TOOLS NEEDED TO BEGIN THE INSTALLATION.

- 1 - APPROVED SHOP DRAWINGS
- 2 - LEVEL AND PLUMB (TRANSIT)
- 3 - FASTENERS AND REQUIRED DRIVERS.
- 4 - PERIMETERS AND ACCESSORIES SUCH AS ANCHORS, FASTENERS, SLEEVES AND/OR SPLICE CAPS.
- 5 - SEALING MATERIALS.
- 6 - GLAZING MATERIALS.

L - FOLLOW SEALANT MANUFACTURER'S RECOMMENDATIONS FOR PROPER SEALANT AND APPLICATION. ALL SEALANTS AND MASTICS MUST BE COMPATIBLE WITH ALL SURFACES INCLUDING OTHER SEALANT SURFACES. WHERE REQUIRED ALL SEALANTS MUST ADHERE TO ALL SURFACES INCLUDING OTHER SEALANT SURFACES.

1600UT SYSTEM 2 NOTES

1600UT SYSTEM 2 IS AVAILABLE WITH 1" FRAMING MEMBERS WHICH ACCEPT BOTH 1" AND 1/4" INFILLS AND 1-3/4" FRAMING MEMBERS WHICH ACCEPT BOTH 1-3/4" AND 1" INFILLS. DETAILS IN THIS INSTALLATION MANUAL SHOWING 1" FRAMING WILL BE SIMILAR FOR 1-3/4" FRAMING UNLESS NOTED OTHERWISE.

THE TERM "CAPTURED VERTICALS OR CAPTURED HORIZONTALS" WILL BE USED THROUGHOUT THESE INSTRUCTIONS. THIS MEANS FRAMING MEMBERS THAT ACCEPT AN EXTERIOR PRESSURE PLATE AND COVERS. "STRUCTURAL GLAZED VERTICALS" DO NOT ACCEPT EXTERIOR METAL.

GLASS BITE IS 1/2" AT CAPTURED VERTICALS AND HORIZONTALS. GLASS BITE IS 1" AT STRUCTURAL GLAZED VERTICALS. GLASS SIZES MUST BE CALCULATED FROM APPROVED SHOP DRAWINGS.

UNLESS OTHERWISE SPECIFIED, IT IS RECOMMENDED THAT SILICONE SEALANT BE USED FOR ALL INTERNAL SEALS.

SEALANT MUST BE APPLIED PER THE SEALANT MANUFACTURER'S RECOMMENDATIONS AND PASS ALL ADHESION AND COMPATIBILITY TESTING.

AT ALL JOINT SEALS, SEALANT MUST ADHERE TO METAL, GASKETS, THERMAL SEPARATOR AND JOINT PLUG MATERIALS.

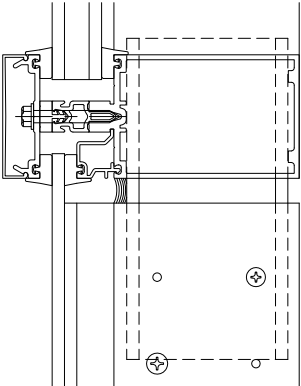
CLEAN ALL SURFACES PRIOR TO APPLICATION OF SEALANT AND PRIME WHERE NECESSARY TO ACHIEVE PROPER ADHESION.

VERTICAL MULLION SPLICE - VERTICAL MULLIONS THAT ARE STRUCTURALLY GLAZED MUST BE SPLICED AT A HORIZONTAL. LOCATION OF THIS SPLICE MUST BE REVIEWED FOR STRUCTURAL INTEGRITY BY FACTORY ENGINEERING.

SHIM ALL SILL HORIZONTALS AT SETTING BLOCK LOCATIONS.

DO NOT REDUCE THE .625" EMBEDMENT DEPTH OF THE 1600UT PRESSURE PLATE FASTENER IN THE SCREW RACE. OTHER ACCOMMODATIONS / COMPONENTS MUST BE MADE FOR OTHER OPTIONAL INFILL SIZES / APPLICATIONS TO ENSURE THREAD ENGAGEMENT REMAINS AS INITIALLY DESIGNED. TORQUE APPLIED TO THE 1600UT PRESSURE PLATE FASTENERS REMAIN AT 95-100 IN-LBS PER STANDARD INSTALLATION INSTRUCTIONS FOR ALL INFILL DEPTHS.

TYPICAL SPLICE LOCATION VISION OVER SPANDREL HORIZONTAL



CONFIDENTIAL AND PROPRIETARY INFORMATION KAWNEER COMPANY INC.

THESE DRAWINGS ARE THE SOLE AND EXCLUSIVE PROPERTY OF KAWNEER AND CONTAIN SENSITIVE, PRIVILEGED OR CONFIDENTIAL INFORMATION WHICH MAY BE USED ONLY FOR ITS BENEFIT. THE DISCLOSURE OF THESE DRAWINGS TO UNAUTHORIZED PERSONS IS STRICTLY PROHIBITED. THIS DOCUMENT AND ALL COPIES MUST BE RETURNED UPON DEMAND. © COPYRIGHT KAWNEER COMPANY, INC., 2011

STRUCTURAL SEAL NOTES

STRUCTURAL SILICONE SEAL - THE GLAZING INSTALLER IS RESPONSIBLE FOR SELECTING AND CONTACTING THE SILICONE MANUFACTURER TO DETERMINE WHICH TYPE OF SILICONE IS TO BE USED AND WHAT SAMPLES ARE REQUIRED TO BE SUBMITTED FOR ADHESION AND COMPATIBILITY TESTING.

THE SILICONE SEALANT SHALL NOT BE APPLIED TO KAWNEER PRODUCTS WITHOUT THE APPROVAL OF THE SILICONE MANUFACTURER AND UNTIL ALL REQUIRED TESTING IS COMPLETED AND DETAILED APPLICATION INSTRUCTIONS HAVE BEEN DELIVERED TO THE INSTALLER BY THE SILICONE MANUFACTURER.

IF YOU FIND THE SILICONE MANUFACTURER'S INSTALLATION INSTRUCTIONS ARE NOT IN ACCORDANCE WITH KAWNEER'S INSTALLATION INSTRUCTIONS, IT IS YOUR RESPONSIBILITY TO NOTIFY KAWNEER OF THIS CONFLICT PRIOR TO GLAZING.

YOUR GLASS SUPPLIER MUST BE MADE AWARE THAT THEIR GLASS WILL BE USED IN A SSG APPLICATION. THE APPLICATION MUST BE APPROVED BY THE GLASS SUPPLIER PRIOR TO GLAZING.

ANY STRUCTURAL SILICONE GLAZED PRODUCT APPLICATION THAT IS NOT SHOWN IN KAWNEER'S STANDARD PRODUCT LITERATURE MUST BE PRE-APPROVED BY KAWNEER.

EXTERIOR GLASS WEATHER SEAL - SEALANT TO BE A TYPE AS RECOMMENDED BY THE MANUFACTURER OF THE STRUCTURAL SEALANT BEING USED FOR THIS PROJECT. SEALANT MUST BE APPLIED PER THE SEALANT MANUFACTURER'S RECOMMENDATIONS. WEATHER SEAL SEALANT MUST ADHERE TO EXTERIOR GASKET MATERIAL.



1600UT SYSTEM 2 INSTALLATION INSTRUCTIONS

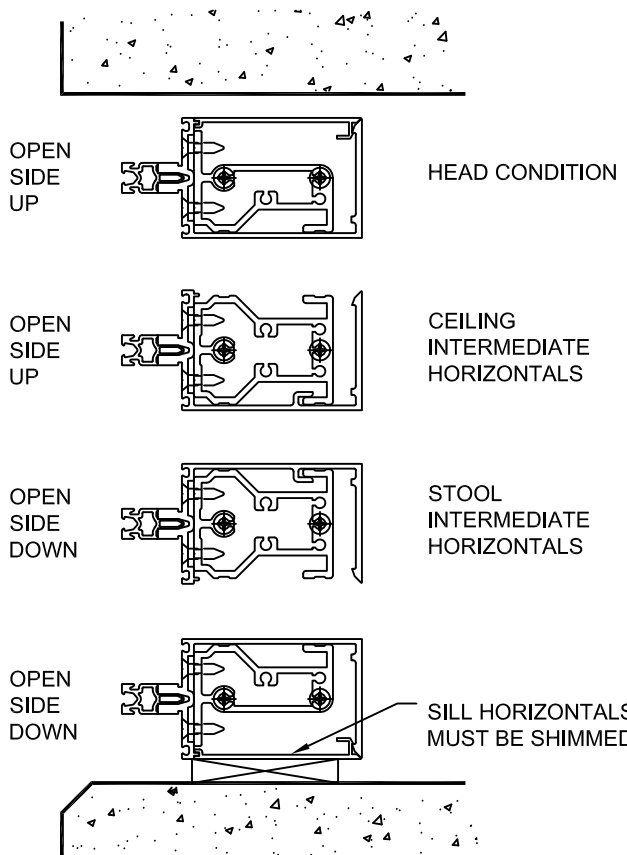
Product Engineering & Development

OPEN BACK HORIZONTAL NOTES

THE OPEN BACK HORIZONTAL IS TO BE TYPICALLY USED FOR ALL HEAD/SILL AND LAST BAY INTERMEDIATE HORIZONTALS.

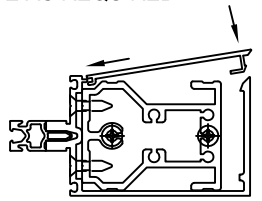
THE OPEN BACK HORIZONTAL CAN BE USED AT OTHER CONDITIONS IF IT IS AN ADVANTAGE TO THE JOB DESIGN.

THE SHEAR BLOCK AT ALL OPEN BACK INTERMEDIATE HORIZONTALS HAS THE OPTION TO BE PRE-INSTALLED INTO THE HORIZONTAL BEFORE HORIZONTALS ARE INSTALLED



WHEN THE OPEN SIDE OF THE OPEN BACK HORIZONTAL IS EXPOSED AND AT EYE LEVEL A SNAP-IN FILLER IS AVAILABLE.

A SNAP-IN FILLER WILL ALSO BE USED AT HEAD/SILL AT ANCHORING TYPE "B" AND "C" FOR AIRSEAL BACKER SUPPORT. CUT FILLER SHORT FOR SHEAR BLOCK/ANCHOR CLEARANCE AS REQUIRED.



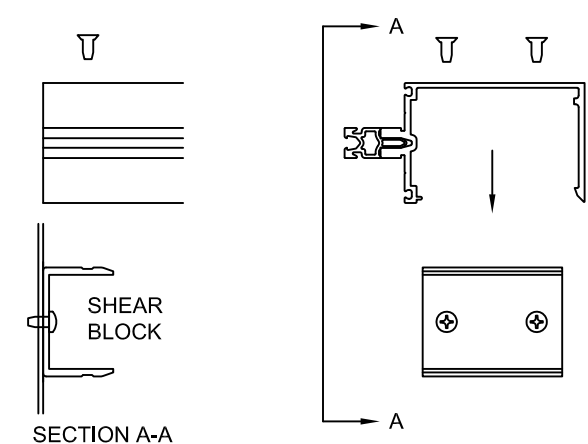
AT INTERMEDIATE HORIZONTALS, WHEN THE SNAP-IN FILLER IS NOT USED, AND DUE TO STANDARD COMMERCIAL EXTRUDING TOLERANCES, IT MAY BE REQUIRED TO USE A 4" PIECE OF THE FILLER AT EACH END OF A HORIZONTAL.

USE PART 162316 FOR THE 6" & 6-3/4" DEEP SYSTEM  
USE PART 162317 FOR THE 7-1/2" & 8-1/4" DEEP SYSTEM

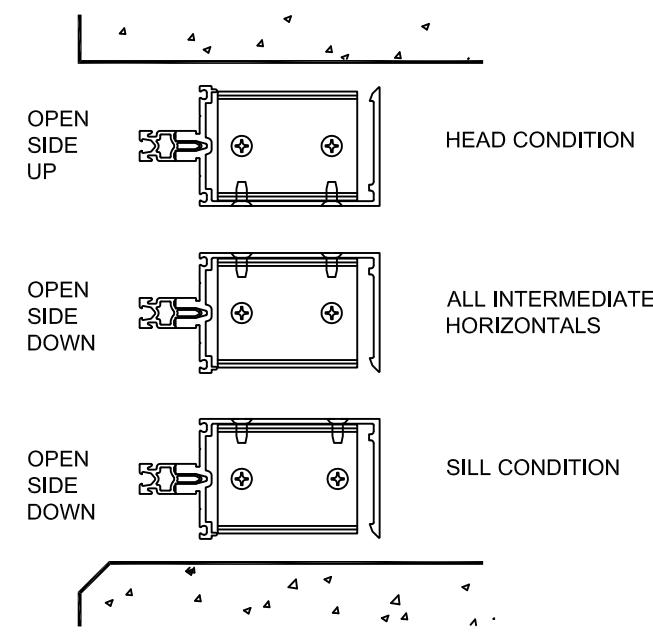
OPEN BACK HORIZONTALS AT 90° AND 135° CORNERS

WHENEVER POSSIBLE AVOID USING OPEN BACK HORIZONTALS AT 90° AND 135° CORNERS. IF USING THE OPEN BACK HORIZONTAL BECOMES ABSOLUTELY NECESSARY THE SHEAR BLOCK CONNECTION WILL BE AS SHOWN BELOW.

ALSO REFER TO CORNER INSTRUCTIONS 171909



THE OPEN SIDE OF THE OPEN BACK HORIZONTAL IS TO BE POSITIONED AS SHOWN BELOW. THE INTERMEDIATE HORIZONTAL IS POSITIONED OPEN SIDE DOWN FOR DEAD LOAD SUPPORT.



STEP - 1 CHECK OPENINGS

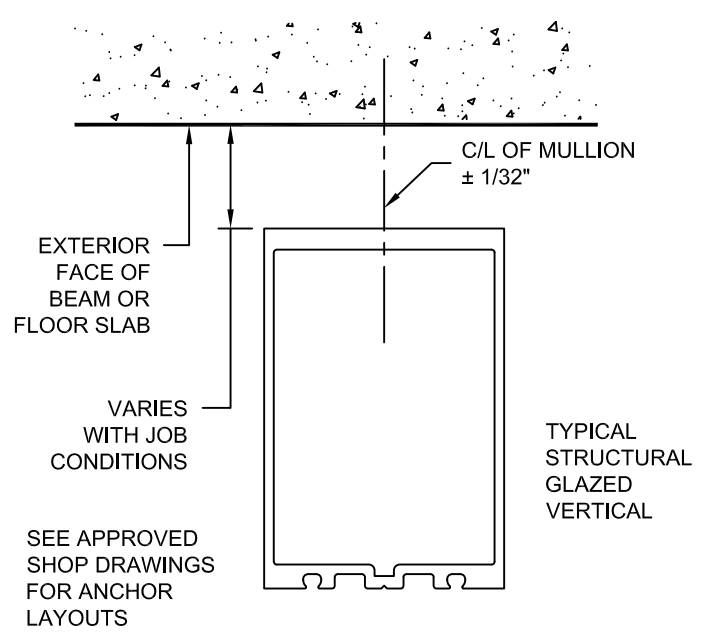
ELEVATIONS AND SLABS MUST BE WITHIN ADJUSTMENT OF ANCHORING SYSTEM. SEE APPROVED SHOP DRAWINGS FOR ALLOWABLE ADJUSTMENT.

ANCHORING SURFACES OF PERIMETER CONSTRUCTION MUST BE LEVEL AND PLUMB WITHIN THE ADJUSTMENT LIMITS OF THE HEAD, SILL AND JAMB. SEE APPROVED SHOP DRAWINGS FOR ALLOWABLE ADJUSTMENT.

STEP - 2 LAY OUT ANCHOR AND MULLION CENTERLINES

USE WALL LINES ESTABLISHED BY THE GENERAL CONTRACTOR. ON EACH FLOOR LAY OUT A REFERENCE LINE TO ESTABLISH IN AND OUT WALL LOCATIONS.

USE COLUMN CENTER LINES ESTABLISHED BY THE GENERAL CONTRACTOR. ON EACH FLOOR LAY OUT MULLION CENTER LINES AND ANCHOR CENTER LINES.



STEP - 3 INSTALL PRESET ANCHORS IF APPLICABLE

USING LOCATION LINES PREVIOUSLY ESTABLISHED INSTALL PRESET ANCHORS IN PLACE PER APPROVED SHOP DRAWINGS.

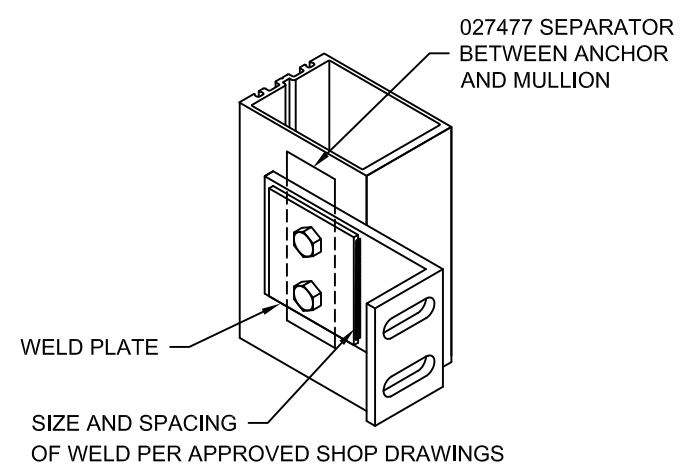
CONFIDENTIAL AND PROPRIETARY INFORMATION  
KAWNEER COMPANY INC.

THESE DRAWINGS ARE THE SOLE AND EXCLUSIVE PROPERTY OF KAWNEER AND CONTAIN SENSITIVE, PRIVILEGED OR CONFIDENTIAL INFORMATION WHICH MAY BE USED ONLY FOR ITS BENEFIT. THE DISCLOSURE OF THESE DRAWINGS TO UNAUTHORIZED PERSONS IS STRICTLY PROHIBITED. THIS DOCUMENT AND ALL COPIES MUST BE RETURNED UPON DEMAND.  
© COPYRIGHT KAWNEER COMPANY, INC., 2011

STEP - 4 FRAME ASSEMBLY

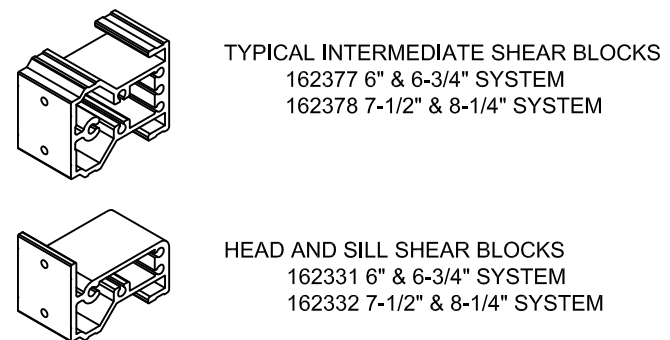
ATTACH ANCHORS TO MULLIONS WHERE APPLICABLE. ANCHOR PREP MAY BE FABRICATED IN THE FIELD OR FACTORY. CONSULT APPROVED SHOP DRAWINGS FOR CORRECT METHOD. STANDARD ANCHOR PREP IS THRU-BOLTED AT INTERMEDIATE VERTICALS AND TAPPING PLATES ARE USED AT JAMB VERTICALS. REFER TO APPROVED SHOP DRAWINGS FOR CORRECT METHOD.

WHEN WELDING ANCHORS, PROTECT INSTALLED GLASS AND METAL FROM WELD SPLATTER.



DO NOT OVER TIGHTEN ANCHOR CONNECTIONS. TIGHTEN TO A "SNUG TIGHT" POSITION WITH PARTS BROUGHT INTO GOOD CONTACT. BE SURE ANY SPRING TYPE LOCK WASHERS ARE COMPRESSED. THEN TIGHTEN APPROXIMATELY 1/2 MORE TURN.

ATTACH SHEAR BLOCKS



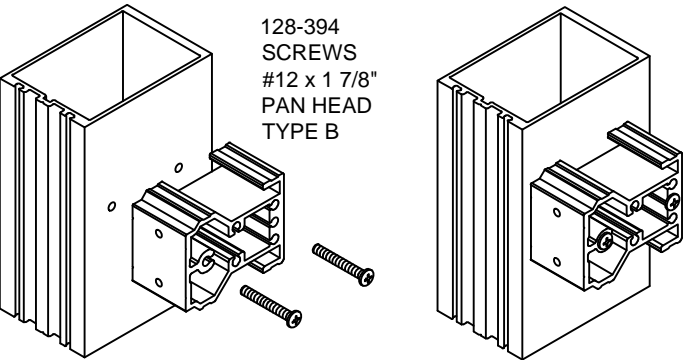
**KAWNEER** 1600UT SYSTEM 2  
INSTALLATION INSTRUCTIONS

Product Engineering & Development

95449-109  
09/09/16

STEP - 4 FRAME ASSEMBLY

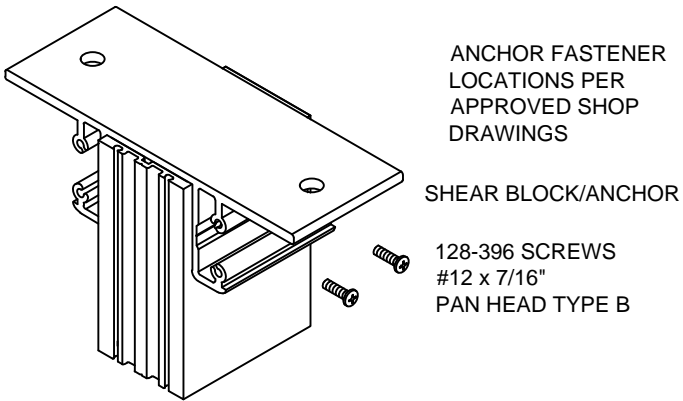
ATTACH SHEAR BLOCKS



HEAD/SILL SHEAR BLOCK/ANCHOR WHERE APPLICABLE AND SHOWN BELOW.

162-314 6" & 6-3/4" SYSTEM AT JAMBS  
162-315 7-1/2" & 8-1/4" SYSTEM AT JAMBS  
162-342 6" & 6-3/4" SYSTEM AT MULLIONS  
162-343 7-1/2" & 8-1/4" SYSTEM AT MULLIONS

STRUCTURAL INTEGRITY OF ANCHOR AND FASTENERS MUST BE CHECKED BY FACTORY ENGINEERING.



ANCHOR FASTENER LOCATIONS PER APPROVED SHOP DRAWINGS

SHEAR BLOCK/ANCHOR

128-396 SCREWS  
#12 x 7/16"  
PAN HEAD TYPE B

STEP - 5 INSTALL 162-310 THERMAL BREAK

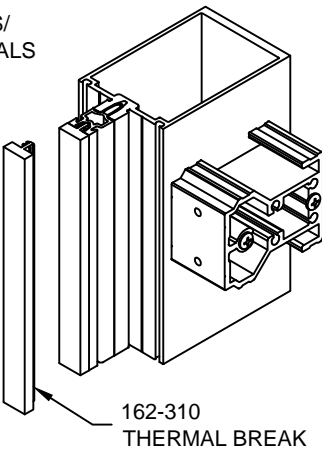


162-310

CAPTURED VERTICALS/HORIZONTALS

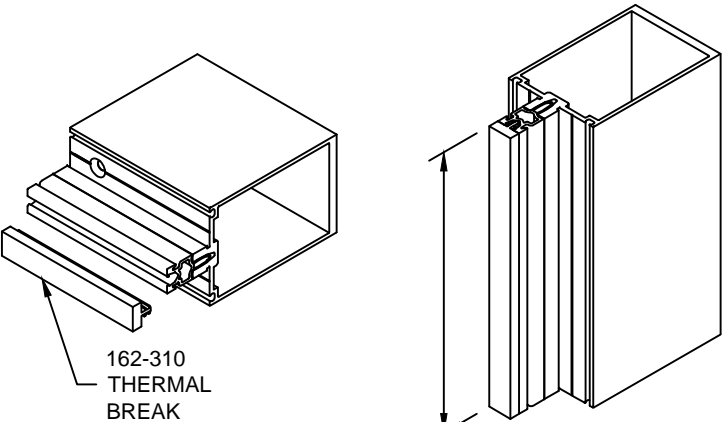
DO NOT STRETCH WHEN REMOVING FROM COIL AND CARTON

DO NOT STRETCH DURING INSTALLATION



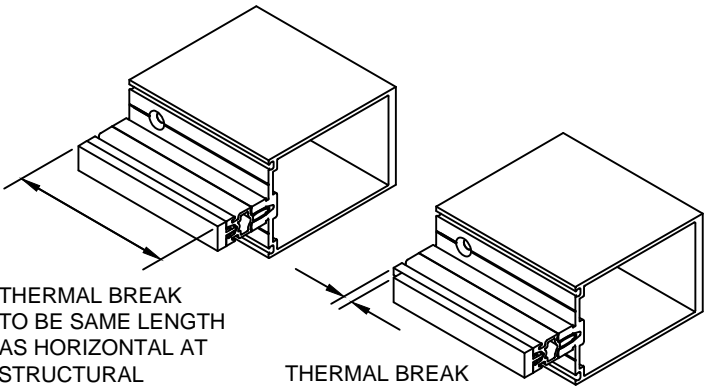
162-310 THERMAL BREAK

STEP - 5 INSTALL 162-310 THERMAL BREAK



OPTION TO INSTALL THERMAL BREAK AFTER VERTICALS AND HORIZONTALS ARE INSTALLED

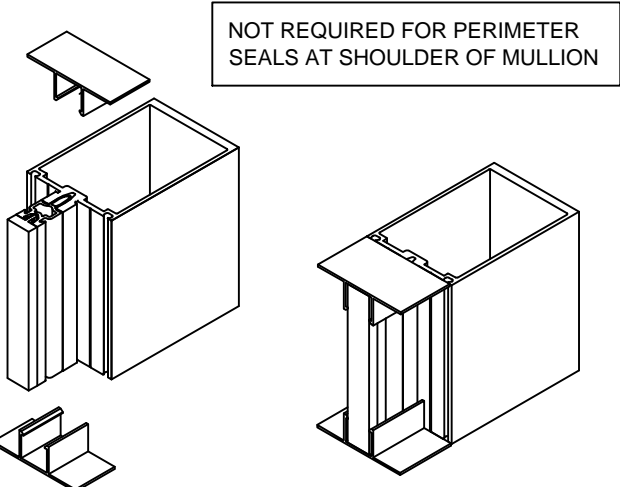
THERMAL BREAK TO BE SAME LENGTH AS VERTICAL MULLIONS



THERMAL BREAK TO BE SAME LENGTH AS HORIZONTAL AT STRUCTURAL GLAZED VERTICALS

THERMAL BREAK TO BE 1/4" SHORT AT EACH END OF HORIZONTAL AT CAPTURED VERTICALS

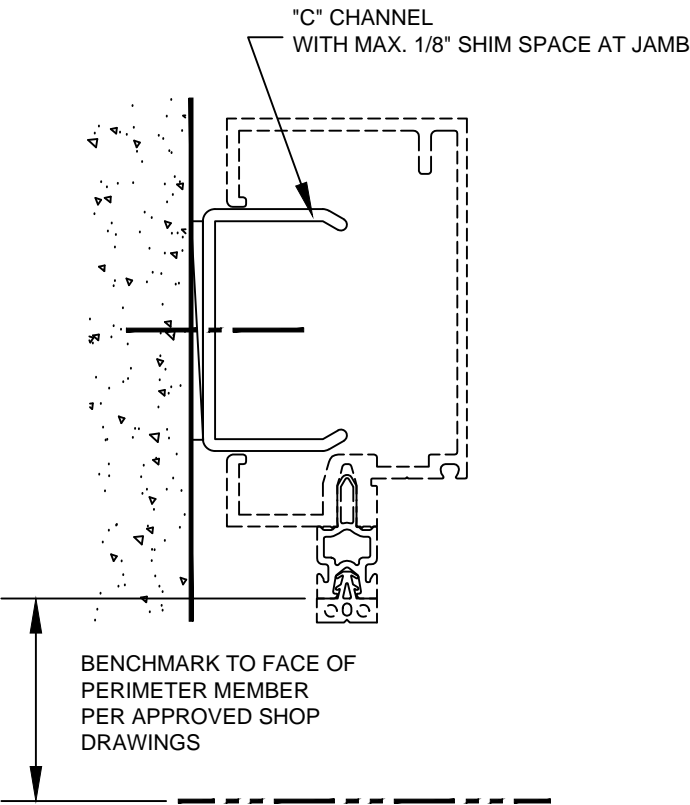
INSTALL HEAD AND SILL END CAPS WHERE APPLICABLE  
171309 1" FRAMING  
171308 1-3/4" FRAMING  
SET IN SEALANT



NOT REQUIRED FOR PERIMETER SEALS AT SHOULDER OF MULLION

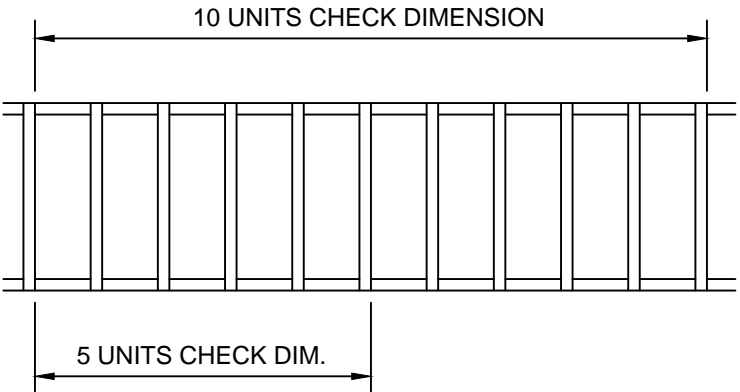
STEP - 6 PERIMETERS WHERE APPLICABLE

INSTALL "C" CHANNEL AT JAMBS PER APPROVED SHOP DRAWINGS.



STEP - 7 INSTALL VERTICAL MULLIONS

DIMENSION BUILD-UP CHECK  
CHECK OVERALL FRAME DIMENSIONS ABOUT EVERY FIVE MULLIONS ON LONG RUNS. THIS IS TO AVOID DIMENSIONAL BUILD-UP.



THESE DRAWINGS ARE THE SOLE AND EXCLUSIVE PROPERTY OF KAWNEER AND CONTAIN SENSITIVE, PRIVILEGED OR CONFIDENTIAL INFORMATION WHICH MAY BE USED ONLY FOR ITS BENEFIT. THE DISCLOSURE OF THESE DRAWINGS TO UNAUTHORIZED PERSONS IS STRICTLY PROHIBITED. THIS DOCUMENT AND ALL COPIES MUST BE RETURNED UPON DEMAND.  
© COPYRIGHT KAWNEER COMPANY, INC., 2011

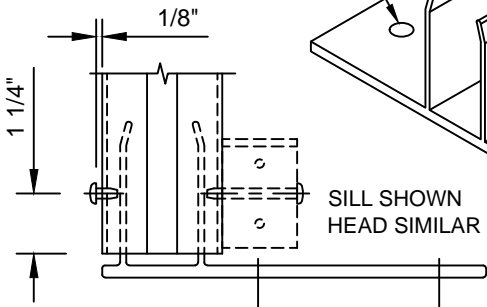
STRUCTURAL GLAZED VERTICALS  
DETAILS SIMILAR FOR CAPTURED VERTICALS

"F" OR "T" ANCHORS WHERE APPLICABLE

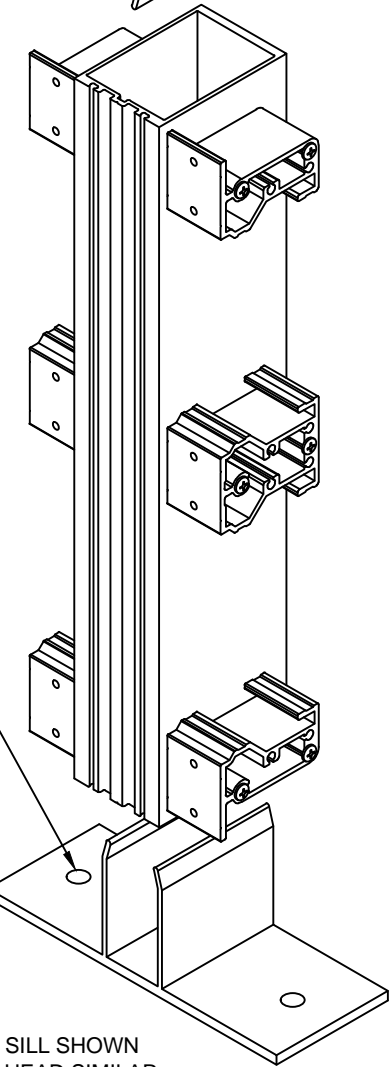
HEAD/SILL SHEAR BLOCKS MAY NEED TO BE REMOVED TO INSTALL A ANCHOR FASTENER THAT MIGHT BE LOCATED CLOSE TO THE MULLION

"F" & "T" ANCHOR FASTENER LOCATIONS PER APPROVED SHOP DRAWINGS

AT MULLION JAMB SIDE, APPLY (2) 128-396 SCREWS AS SHOWN TO CENTER F-CLIPS AS REQUIRED.



"F" AND "T" ANCHOR FASTENER LOCATIONS PER APPROVED SHOP DRAWINGS



KAWNEER

1600UT SYSTEM 2  
INSTALLATION  
INSTRUCTIONS

Product Engineering & Development

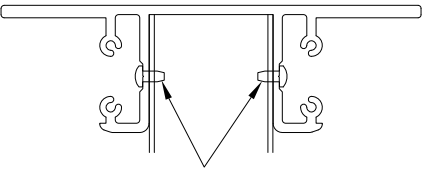
95449-094  
04/26/12

STEP - 7    INSTALL VERTICAL MULLIONS

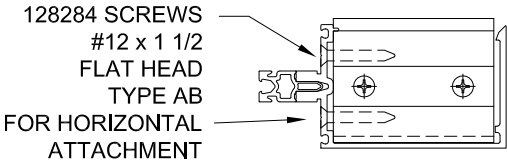
STRUCTURAL GLAZED VERTICALS  
DETAILS SIMILAR FOR CAPTURED VERTICALS

HEAD/SILL SHEAR BLOCK/ANCHOR WHERE APPLICABLE.

162314 6" & 6-3/4" SYSTEM AT JAMBS  
162315 7-1/2" & 8-1/4" SYSTEM AT JAMBS  
162342 6" & 6-3/4" SYSTEM AT MULLIONS  
162343 7-1/2" & 8-1/4" SYSTEM AT MULLIONS

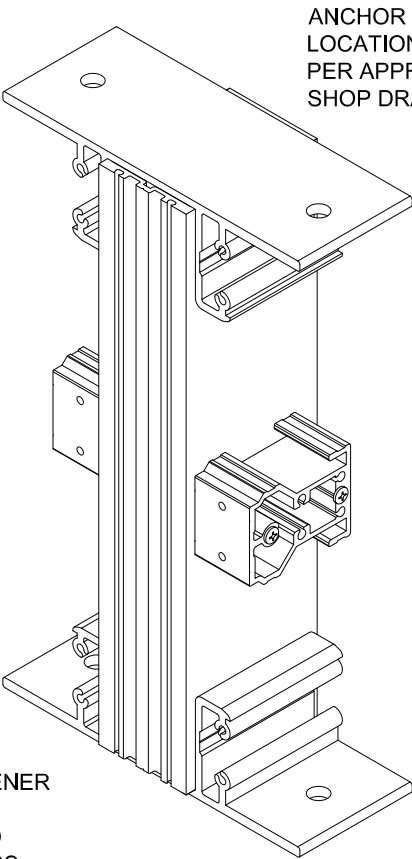


128396 SCREWS  
#12 x 7/16"  
PAN HEAD TYPE B



THE ABOVE SCREWS ARE ONLY USED AT THE  
OPTIONAL SHEAR BLOCK/ANCHORS.

STRUCTURAL SHIMMING IS REQUIRED AT  
SILL TO ACCOMPLISH DESIGNED  
PERIMETER SEAL WIDTH.

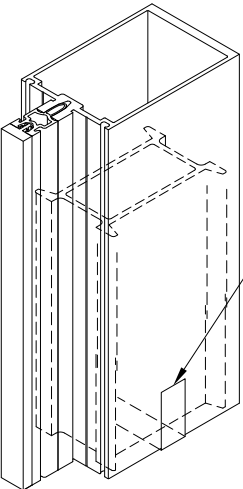


ANCHOR FASTENER  
LOCATIONS  
PER APPROVED  
SHOP DRAWINGS

ANCHOR FASTENER  
LOCATIONS  
PER APPROVED  
SHOP DRAWINGS

STEP - 7    INSTALL VERTICAL MULLIONS

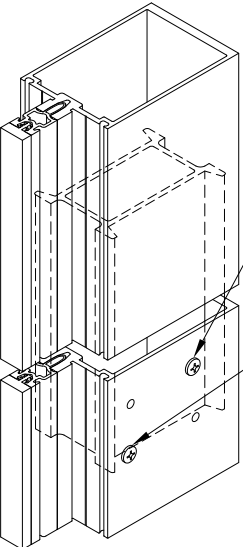
CAPTURED VERTICALS



VERTICAL SPLICE  
JOINTS WHERE  
APPLICABLE.

SLEEVE IS FACTORY  
TAPED ONTO THE  
BOTTOM OF THE  
TOP VERTICAL

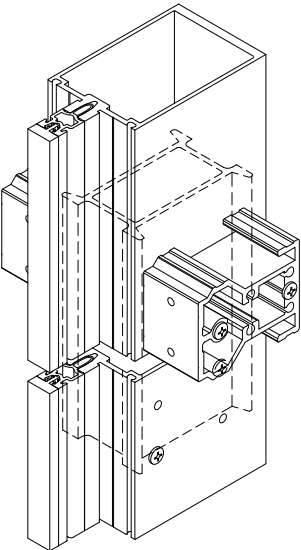
REMOVE THE TAPE  
AND LET THE SLEEVE  
SLIDE DOWN TO THE  
FACTORY APPLIED  
STOP SCREW



FIELD APPLIED  
FIXING SCREW  
128348  
#10 x 1 1/4"  
FLAT HEAD  
SELF DRILLING

SHOP APPLIED  
STOP SCREW  
128267 #12 x 1"  
PAN HEAD  
TYPE AB

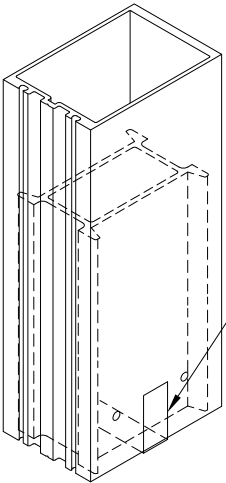
USE TEMPORARY  
SPACERS FOR  
JOINT DIMENSION



SPLICE JOINT  
WHEN IT OCCURS  
AT A HORIZONTAL.

STEP - 7    INSTALL VERTICAL MULLIONS

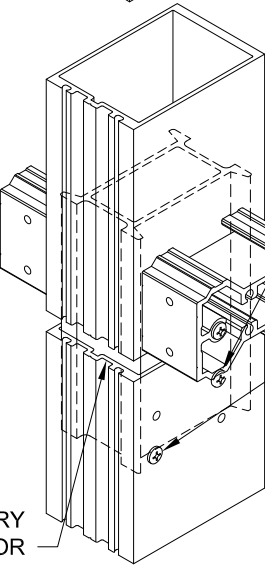
STRUCTURAL GLAZED VERTICALS



VERTICAL SPLICE  
JOINTS WHERE  
APPLICABLE.

SLEEVE IS FACTORY  
TAPED ONTO THE  
BOTTOM OF THE  
TOP VERTICAL

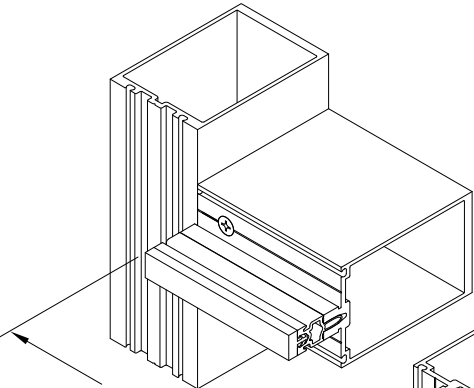
REMOVE THE TAPE  
AND LET THE SLEEVE  
SLIDE DOWN TO THE  
FACTORY APPLIED  
STOP SCREW



FIELD APPLIED  
FIXING SCREW  
128348  
#10 x 1 1/4"  
FLAT HEAD  
SELF DRILLING

SHOP APPLIED  
STOP SCREW  
128267 #12 x 1"  
PAN HEAD  
TYPE AB

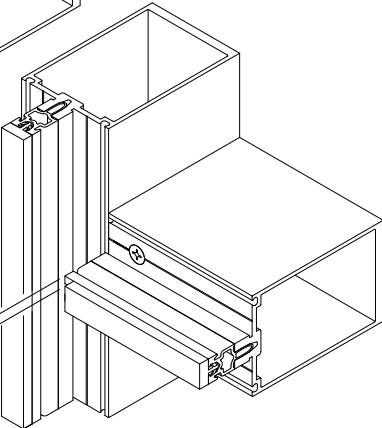
USE TEMPORARY  
SPACERS FOR  
JOINT DIMENSION



THERMAL BREAK  
TO BE SAME  
LENGTH AS  
HORIZONTAL AT  
SSG VERTICAL

THERMAL BREAK  
TO BE 1/4" SHORT  
AT EACH END OF  
HORIZONTALS AT  
CAPTURED  
VERTICALS

NOTE: SEALANT  
SQUEEZE-OUT IS  
NECESSARY TO  
ENSURE A PROPER  
SEAL BETWEEN  
VERTICAL MULLION  
AND HORIZONTALS.



CONFIDENTIAL AND PROPRIETARY INFORMATION  
KAWNEER COMPANY INC.

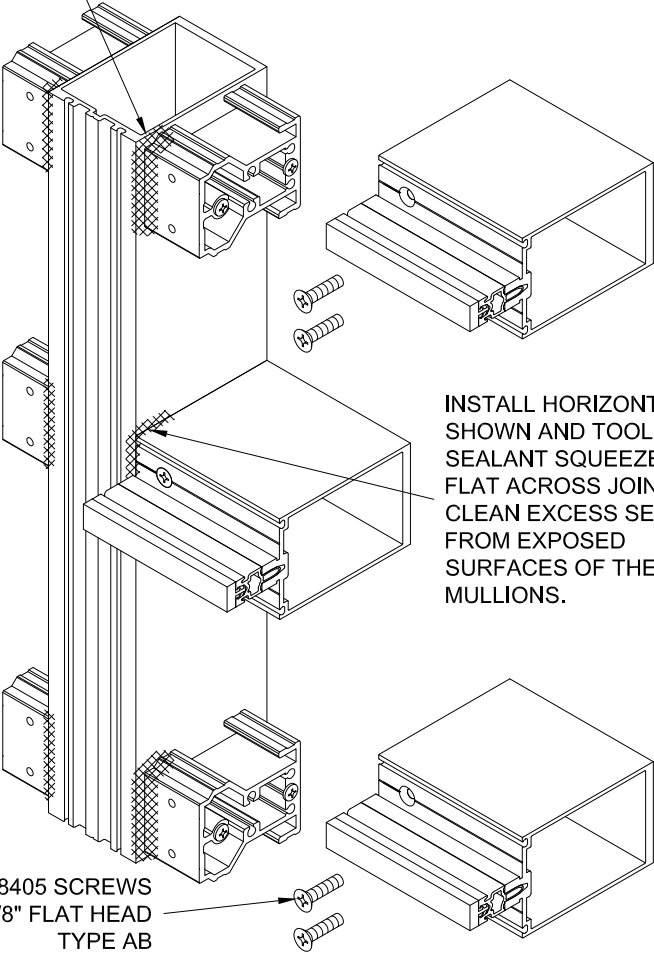
THESE DRAWINGS ARE THE SOLE AND EXCLUSIVE PROPERTY OF KAWNEER AND CONTAIN SENSITIVE, PRIVILEGED OR CONFIDENTIAL INFORMATION WHICH MAY BE USED ONLY FOR ITS BENEFIT. THE DISCLOSURE OF THESE DRAWINGS TO UNAUTHORIZED PERSONS IS STRICTLY PROHIBITED. THIS DOCUMENT AND ALL COPIES MUST BE RETURNED UPON DEMAND.  
© COPYRIGHT KAWNEER COMPANY, INC., 2011

STEP - 8    INSTALL HEAD/SILL AND INTERMEDIATE HORIZONTALS

STRUCTURAL GLAZED VERTICALS  
DETAILS SIMILAR FOR CAPTURED VERTICALS EXCEPT  
HORIZONTAL THERMAL BREAK CUT 1/4" SHORT EACH END.

TUBULAR HORIZONTALS

JUST BEFORE ATTACHING HORIZONTALS, APPLY A BEAD OF SEALANT INTO THE CORNER FORMED BY THE FRONT FACE OF THE SHEAR BLOCK AND THE SIDE OF THE MULLION. FILL THE SPACE WITH A BEAD OF SEALANT LARGE ENOUGH TO EXTEND PAST THE FRONT EDGE OF THE MULLION. WRAP THE BEAD 3/4" AROUND THE TOP AND BOTTOM OF THE SHEAR BLOCK AS SHOWN. PRIOR TO APPLYING SEALANT, CLEAN EACH JOINT PER SEALANT MANUFACTURER INSTRUCTIONS.



INSTALL HORIZONTAL AS  
SHOWN AND TOOL  
SEALANT SQUEEZE-OUT  
FLAT ACROSS JOINT.  
CLEAN EXCESS SEALANT  
FROM EXPOSED  
SURFACES OF THE  
MULLIONS.

128405 SCREWS  
#12 X 7/8" FLAT HEAD  
TYPE AB



Product Engineering & Development

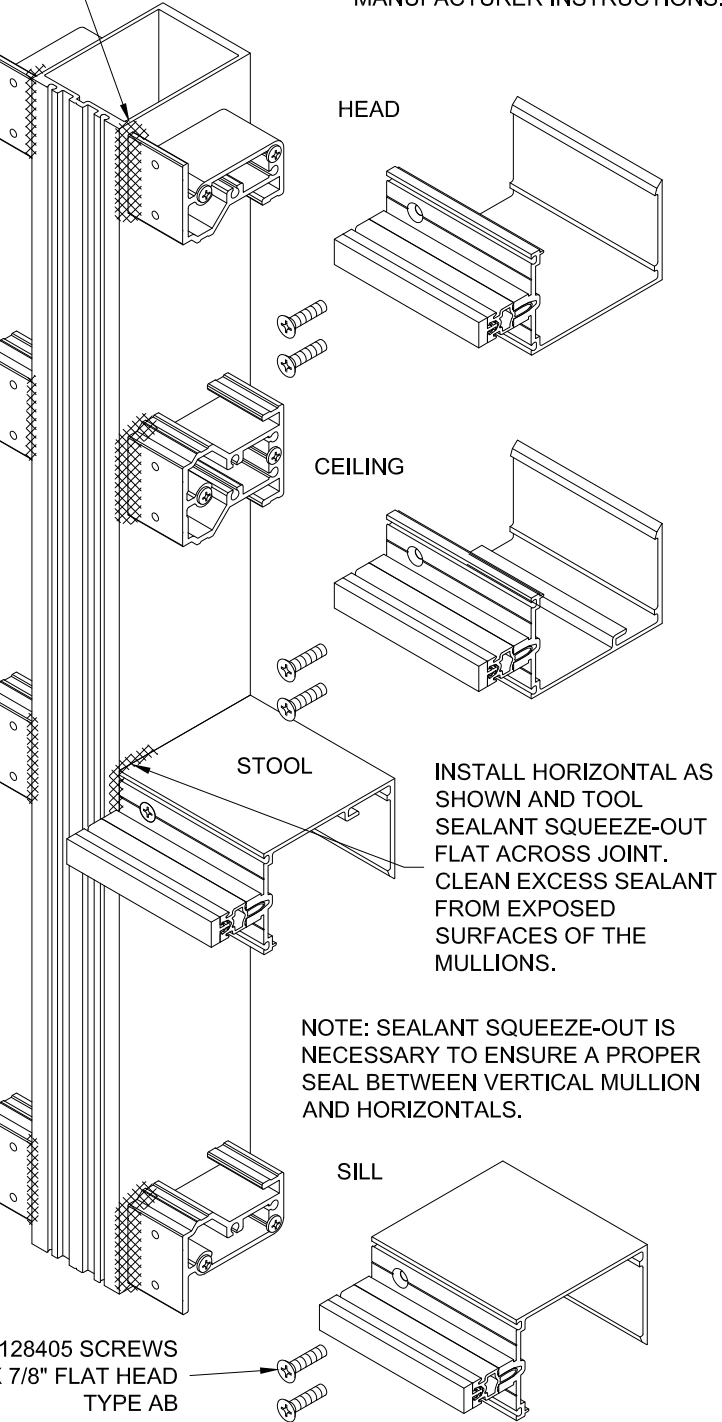
95449-108  
07/22/16

1600UT SYSTEM 2  
INSTALLATION  
INSTRUCTIONS

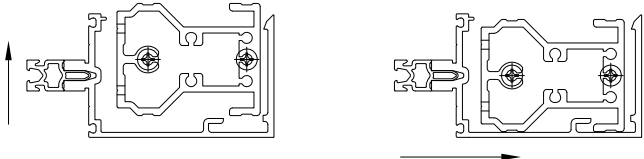
STEP - 8    INSTALL HEAD/SILL  
AND INTERMEDIATE  
HORIZONTALS

STRUCTURAL GLAZED VERTICALS  
DETAILS SIMILAR FOR CAPTURED VERTICALS EXCEPT  
HORIZONTAL THERMAL BREAK CUT 1/4" SHORT EACH END.  
OPEN BACK HORIZONTALS AND LAST BAY HORIZONTALS  
FILLER AVAILABLE WHEN OPEN BACK IS EXPOSED  
AND AT EYE LEVEL.

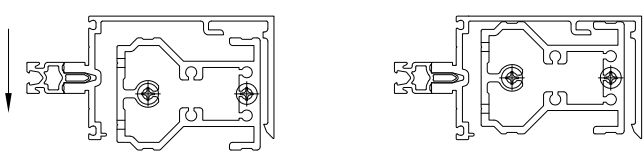
JUST BEFORE ATTACHING HORIZONTALS, APPLY A BEAD OF  
SEALANT INTO THE CORNER FORMED BY THE FRONT FACE  
OF THE SHEAR BLOCK AND THE SIDE OF THE MULLION. FILL  
THE SPACE WITH A BEAD OF SEALANT LARGE ENOUGH TO  
EXTEND PAST THE FRONT EDGE OF THE MULLION. WRAP  
THE BEAD 3/4" AROUND THE TOP AND BOTTOM OF THE  
SHEAR BLOCK AS SHOWN. PRIOR TO APPLYING SEALANT,  
CLEAN EACH JOINT PER SEALANT  
MANUFACTURER INSTRUCTIONS.



INSTALLING CEILING INTERMEDIATE  
OPEN BACK HORIZONTAL



INSTALLING STOOL INTERMEDIATE  
OPEN BACK HORIZONTAL

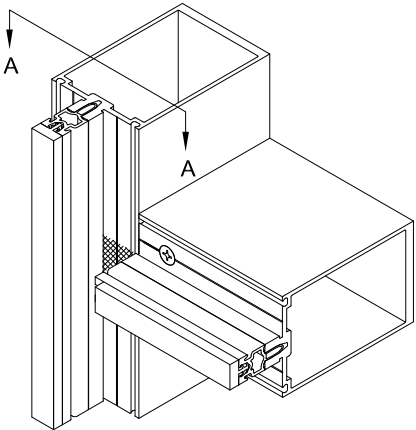
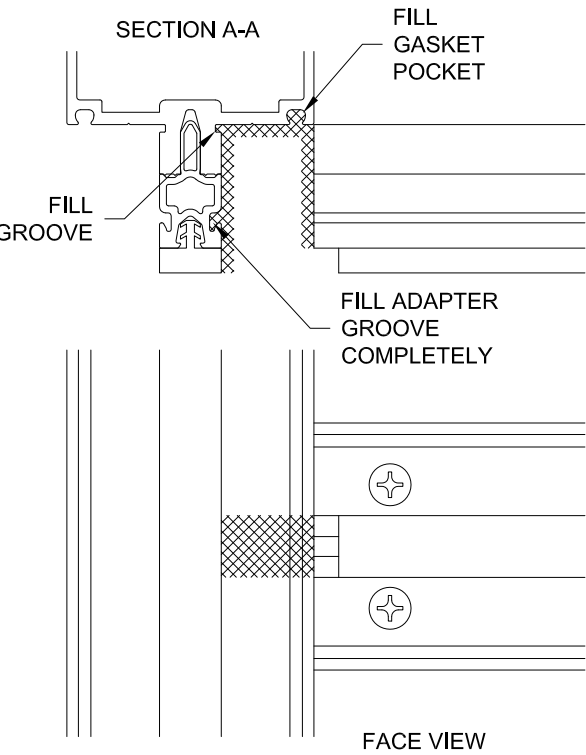


STEP - 9    INSTALL JOINT PLUGS

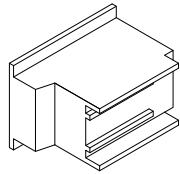
CAPTURED VERTICALS

ALL SURFACES AND GROOVES MUST BE  
CLEANED PER THE SEALANT MANUFACTURER'S  
RECOMMENDATIONS.

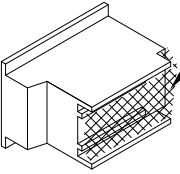
JUST BEFORE INSTALLING JOINT PLUGS APPLY  
SEALANT AS SHOWN FILLING GASKET POCKET  
AND ADAPTER GROOVE. ENSURE THAT THE  
MULLION TONGUE RACEWAY AND THERMAL  
SEPARATOR IS SEALED AND COMPLETELY  
FILLED AT PLUG LOCATION.



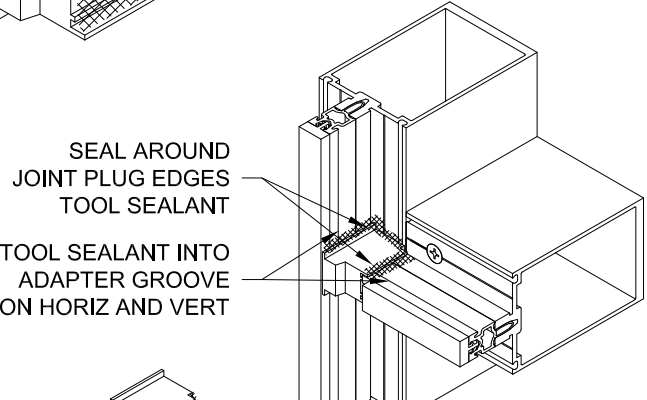
JOINT PLUG  
162321 1" FRAME  
171307 1-3/4" FRAME



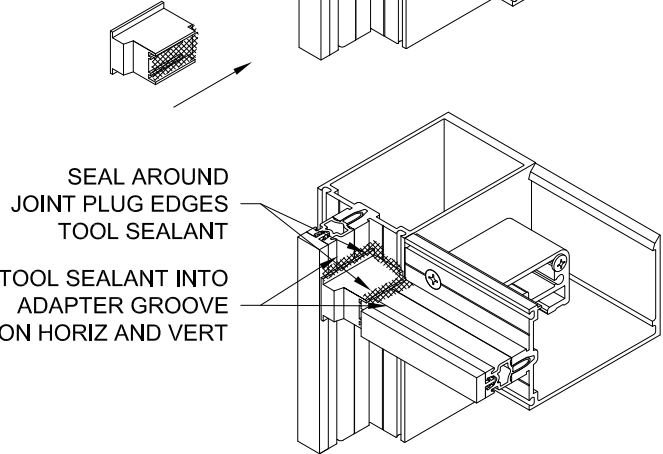
APPLY SEALANT TO  
THIS FACE OF JOINT PLUG



SEAL AROUND  
JOINT PLUG EDGES  
TOOL SEALANT  
TOOL SEALANT INTO  
ADAPTER GROOVE  
ON HORIZ AND VERT



SEAL AROUND  
JOINT PLUG EDGES  
TOOL SEALANT  
TOOL SEALANT INTO  
ADAPTER GROOVE  
ON HORIZ AND VERT

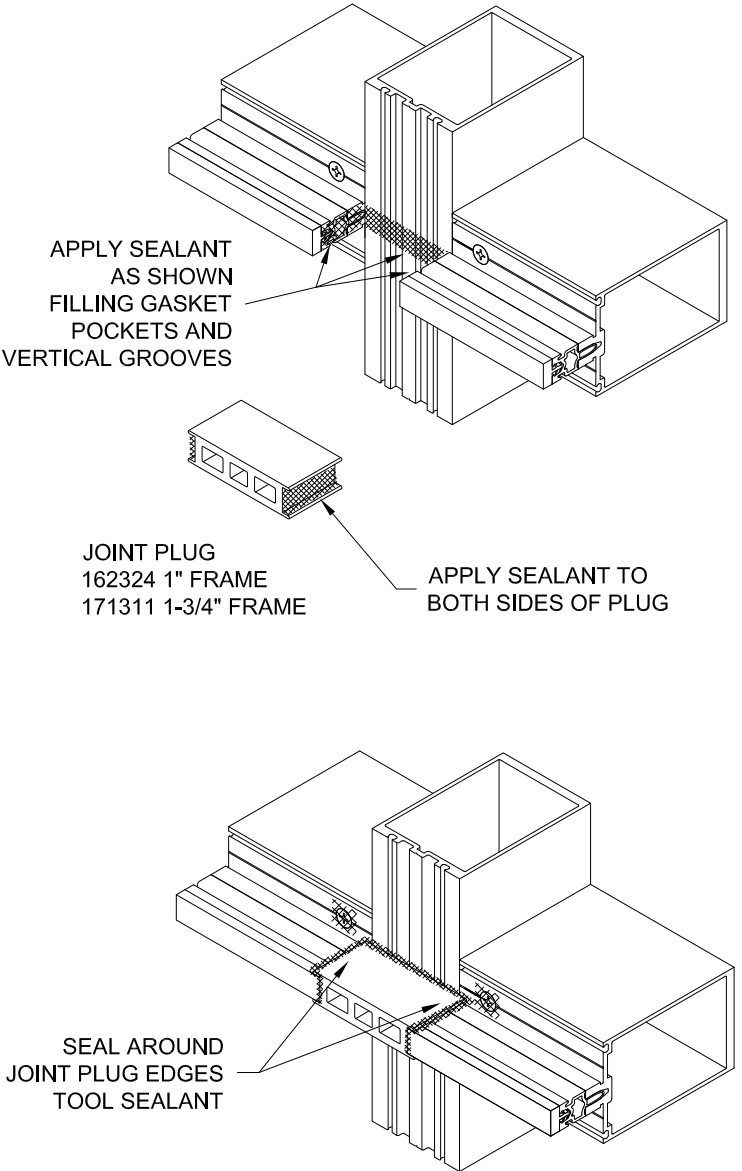


CONFIDENTIAL AND PROPRIETARY INFORMATION  
KAWNEER COMPANY INC.

THESE DRAWINGS ARE THE SOLE AND EXCLUSIVE PROPERTY OF KAWNEER AND CONTAIN  
SENSITIVE, PRIVILEGED OR CONFIDENTIAL INFORMATION WHICH MAY BE USED ONLY FOR ITS  
BENEFIT. THE DISCLOSURE OF THESE DRAWINGS TO UNAUTHORIZED PERSONS IS STRICTLY  
PROHIBITED. THIS DOCUMENT AND ALL COPIES MUST BE RETURNED UPON DEMAND.  
© COPYRIGHT KAWNEER COMPANY, INC., 2011

STEP - 9    INSTALL JOINT PLUGS

STRUCTURAL GLAZED VERTICALS



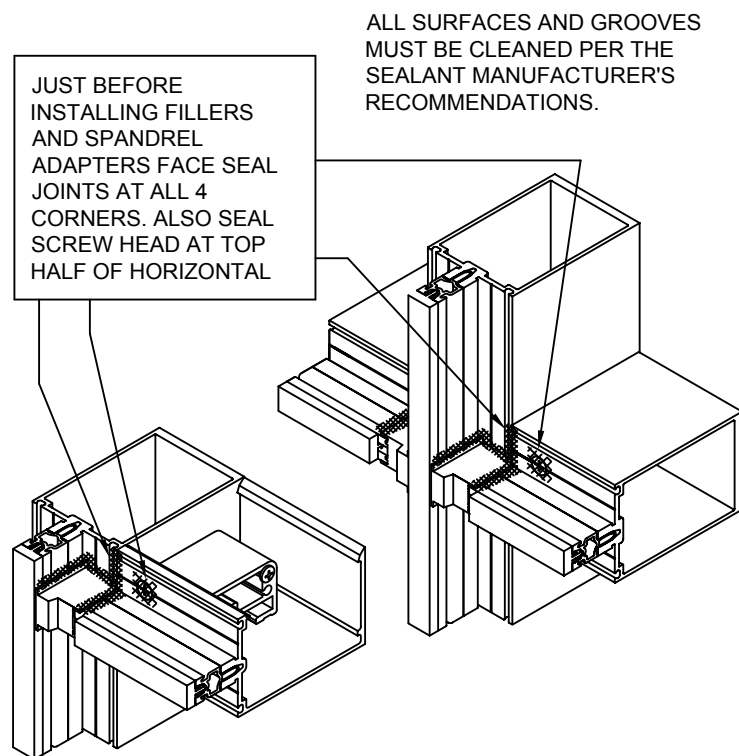
1600UT SYSTEM 2  
INSTALLATION  
INSTRUCTIONS

Product Engineering & Development

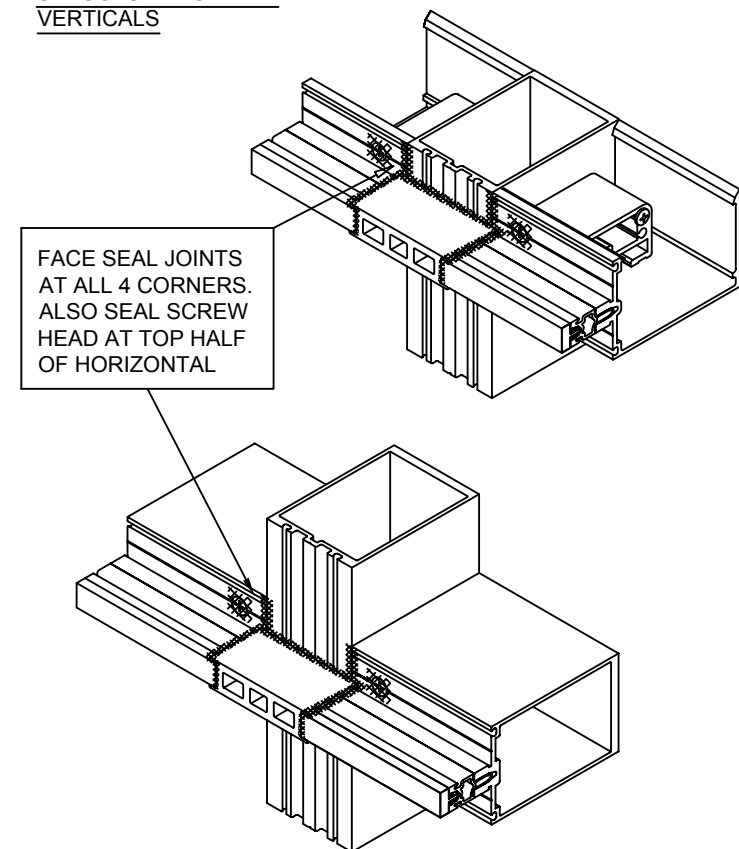
95449-108  
07/22/16

STEP - 10 INSTALL SPANDREL ADAPTERS WHERE APPLICABLE

CAPTURED VERTICALS

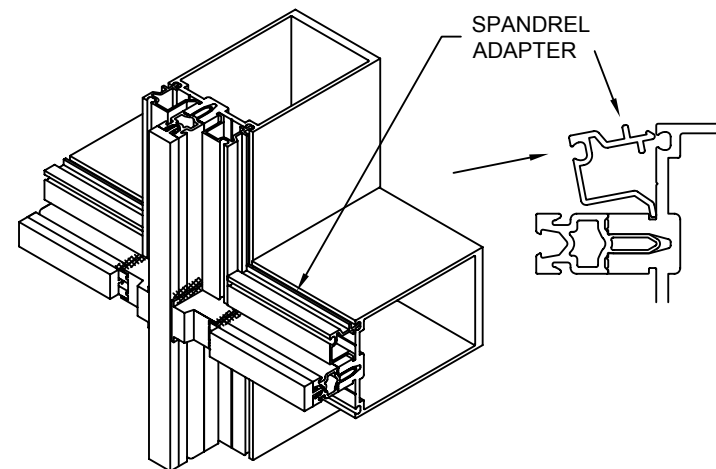


STRUCTURAL GLAZED VERTICALS



STEP - 10 INSTALL SPANDREL ADAPTERS WHERE APPLICABLE

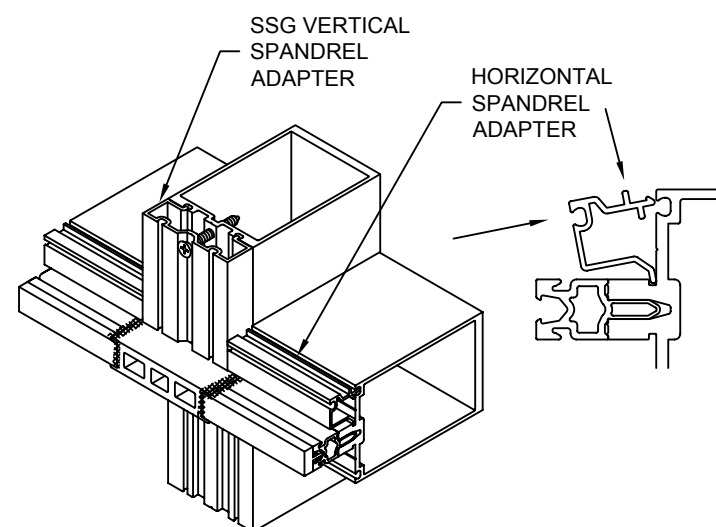
CAPTURED VERTICALS



STRUCTURAL GLAZED VERTICALS

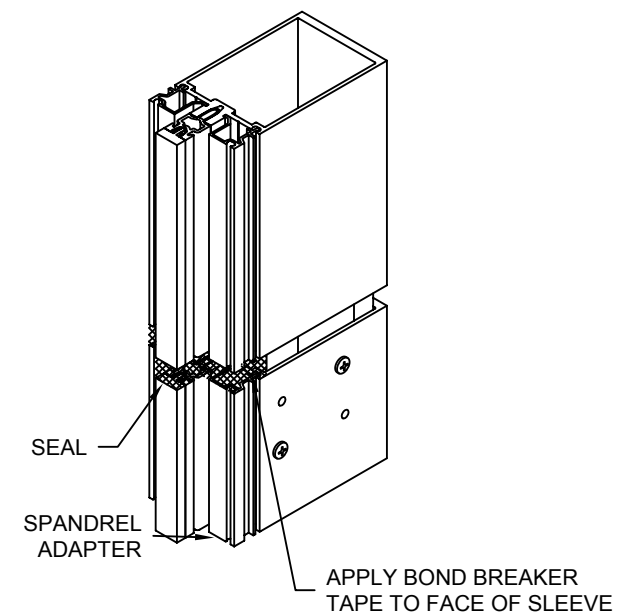
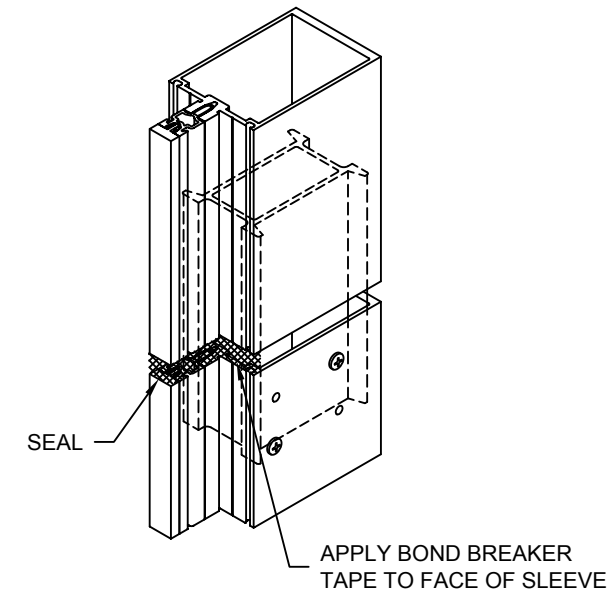
INSTALL VERTICAL ADAPTER WITH 128-348 SCREWS, #10 X 1-1/4" FLAT HEAD SELF DRILLING SCREW. LOCATE A MAXIMUM 6" AND A MINIMUM 4" FROM EACH END AND 9" ON CENTER.

AT STEEL REINFORCING USE 128-401 #10 X 1" FLAT HEAD TYPE B SCREW. DRILL 0.154 DIA. (#23 DRILL) INTO MULLION USING ADAPTER HOLES AS A PILOT.



STEP - 11 SEAL INTERIOR OF VERTICAL SPLICE JOINTS

CAPTURED VERTICALS



171911 (SHEET 06 OF 12)

CONFIDENTIAL AND PROPRIETARY INFORMATION  
KAWNEER COMPANY INC.

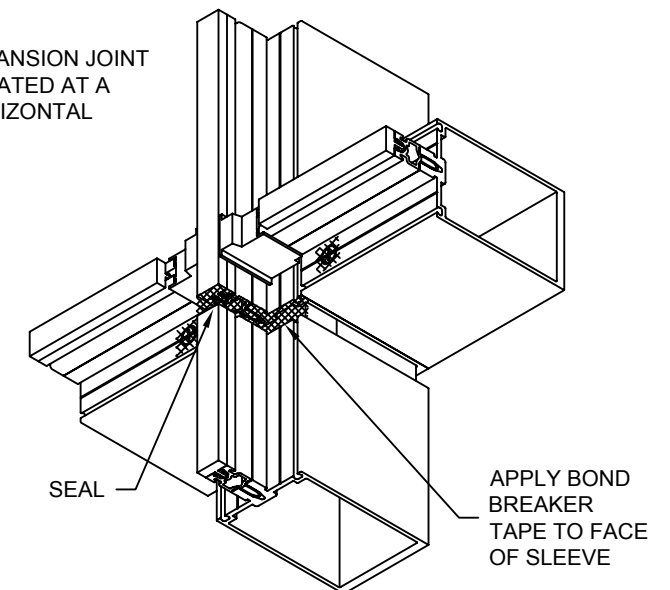
THESE DRAWINGS ARE THE SOLE AND EXCLUSIVE PROPERTY OF KAWNEER AND CONTAIN SENSITIVE, PRIVILEGED OR CONFIDENTIAL INFORMATION WHICH MAY BE USED ONLY FOR ITS BENEFIT. THE DISCLOSURE OF THESE DRAWINGS TO UNAUTHORIZED PERSONS IS STRICTLY PROHIBITED. THIS DOCUMENT AND ALL COPIES MUST BE RETURNED UPON DEMAND.  
© COPYRIGHT KAWNEER COMPANY, INC., 2011

STEP - 11 SEAL INTERIOR OF VERTICAL SPLICE JOINTS

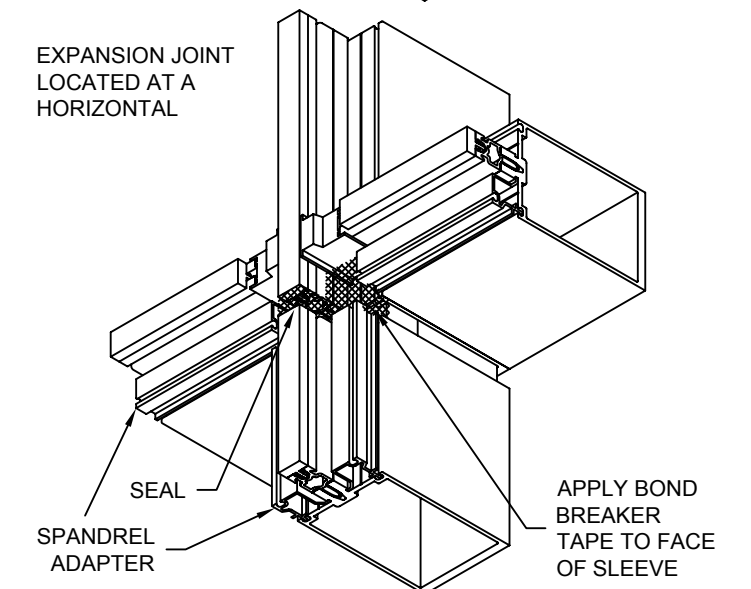
CAPTURED VERTICALS

ALL SURFACES AND GROOVES MUST BE CLEANED PER THE SEALANT MANUFACTURER'S RECOMMENDATIONS.

EXPANSION JOINT LOCATED AT A HORIZONTAL



EXPANSION JOINT LOCATED AT A HORIZONTAL



KAWNEER

1600UT SYSTEM 2  
INSTALLATION  
INSTRUCTIONS

Product Engineering & Development

95449-8G  
01/21/11

171911 (SHEET 06 OF 12)



## STEP - 12 INSTALL INTERIOR GLAZING GASKETS

GASKETS SHOULD BE INSTALLED JUST PRIOR TO GLASS TO AVOID CONTAMINATION BY JOB SITE DEBRIS. GASKET GROOVES AND POCKETS SHOULD BE CLEAN.

IN TEMPERATURES COLDER THAN 50° F ARRANGEMENTS SHOULD BE MADE TO WARM GASKETS BEFORE INSTALLATION. THIS WILL PREVENT EXCESSIVE GLAZING PRESSURE ON THE GLASS DUE TO COLD, STIFF RUBBER GASKETS.

GASKETS CAN BECOME DEFORMED DURING STORAGE IN CARTONS. THEY SHOULD BE REMOVED FROM CARTONS SEVERAL HOURS PRIOR TO GLAZING AND LAID FLAT OR HUNG TO ALLOW RECOVERY OF CORRECT SHAPE. TEMPERATURES SHOULD BE AT LEAST 50° F TO ALLOW THIS.

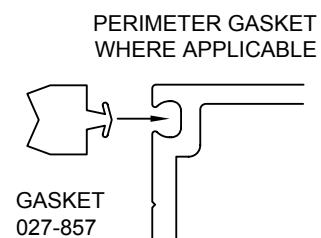
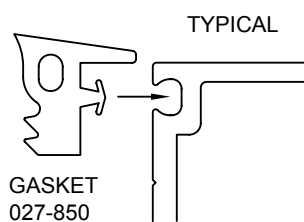
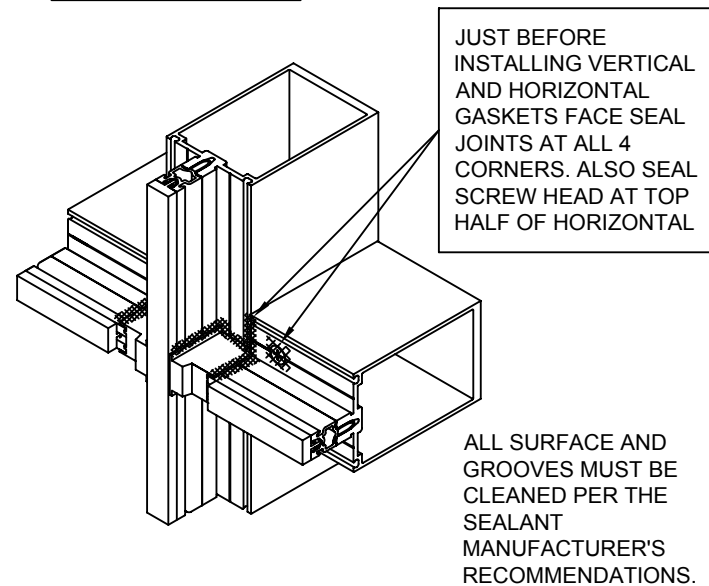
GASKET INSTALLED LENGTH TO BE DAYLITE OPENING. GASKET LENGTH AT STRUCTURAL GLAZED VERTICALS TO BE DAYLITE OPENING PLUS 1-3/8".

GASKETS TO BE CUT LONG FOR SOME "CROWD-IN". GASKETS SHOULD NEVER BE "STRETCHED TO FIT".

"CROWD-IN" TO BE:

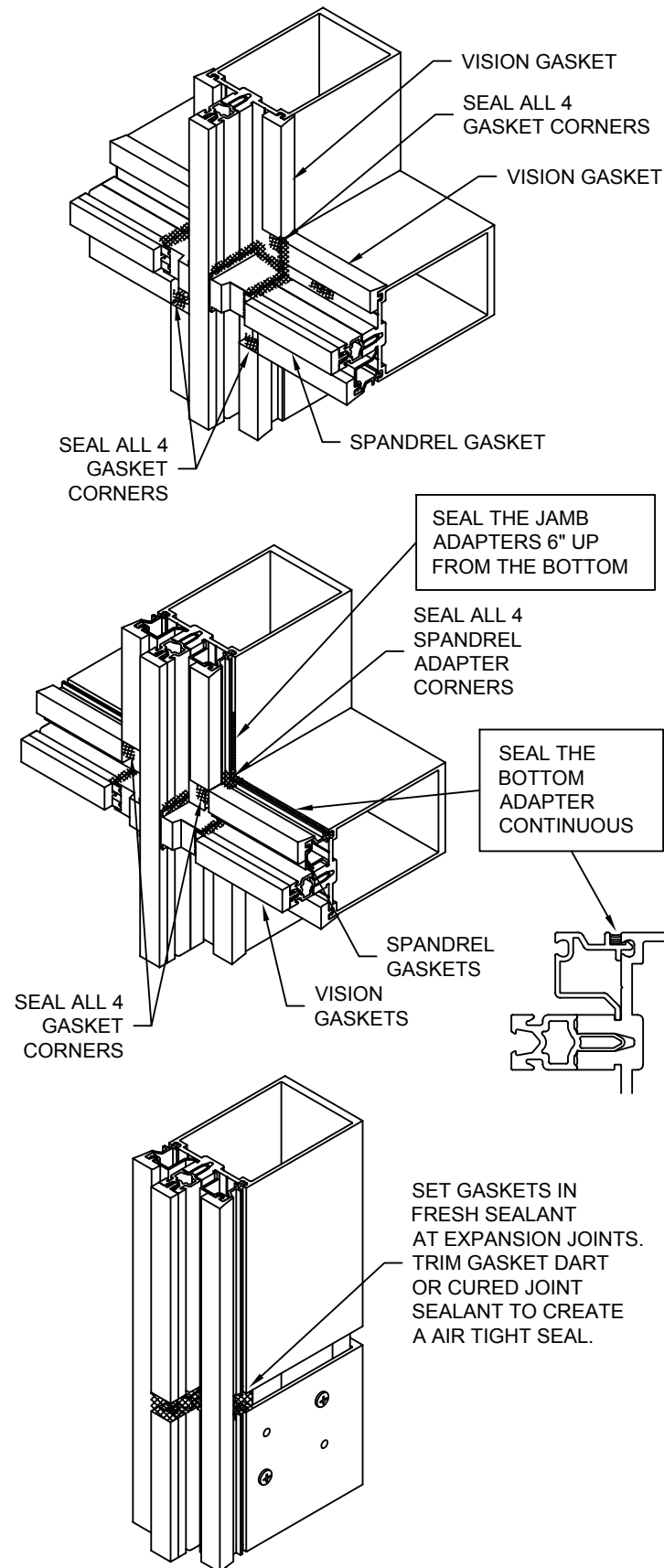
1/8" PER FOOT UP TO 5'-0"  
3/16" PER FOOT UP TO 8'-0"  
1/4" PER FOOT OVER 8'-0"

### CAPTURED VERTICALS



## STEP - 12 INSTALL INTERIOR GLAZING GASKETS

### CAPTURED VERTICALS

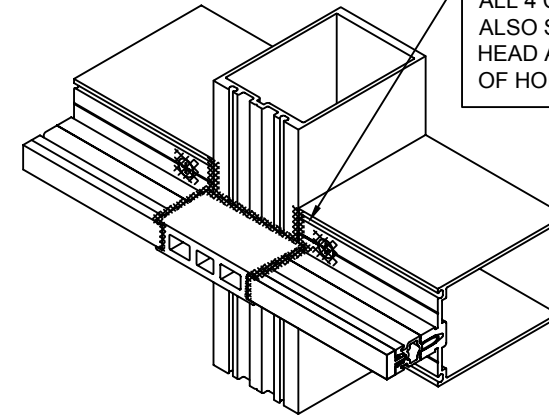


## STEP - 12 INSTALL INTERIOR GLAZING GASKETS

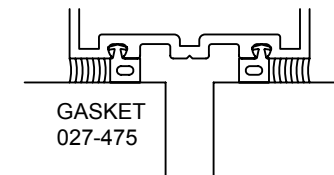
### STRUCTURAL GLAZED VERTICALS

ALL SURFACES AND GROOVES MUST BE CLEANED PER THE SEALANT MANUFACTURER'S RECOMMENDATIONS.

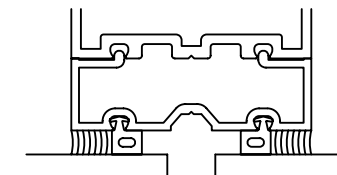
JUST BEFORE INSTALLING VERTICAL AND HORIZONTAL GASKETS. FACE SEAL JOINTS AT ALL 4 CORNERS. ALSO SEAL SCREW HEAD AT TOP HALF OF HORIZONTAL



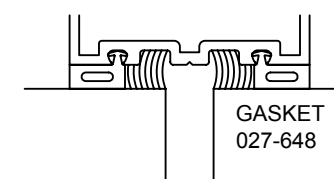
VERTICAL GASKETS TO RUN DAYLIGHT OPENING PLUS 1 3/8"



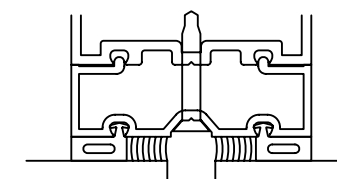
VISION AT INTERIOR STRUCTURAL SEAL



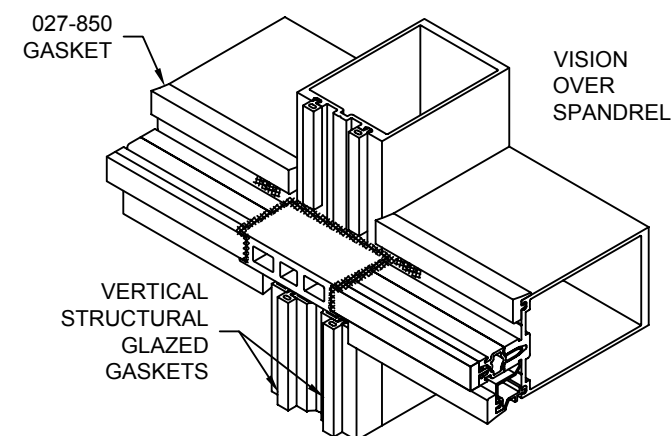
SPANDREL AT INTERIOR STRUCTURAL SEAL



VISION AT EXTERIOR STRUCTURAL SEAL



SPANDREL AT EXTERIOR STRUCTURAL SEAL



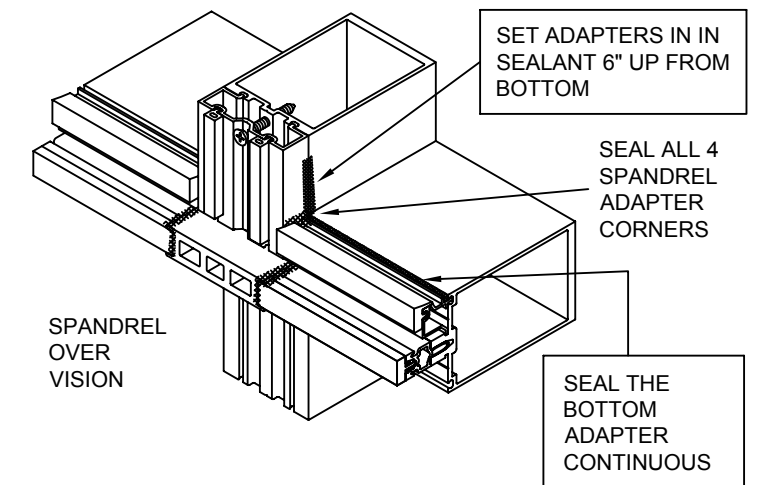
171911 (SHEET 07 OF 12)

CONFIDENTIAL AND PROPRIETARY INFORMATION  
KAWNEER COMPANY INC.

THESE DRAWINGS ARE THE SOLE AND EXCLUSIVE PROPERTY OF KAWNEER AND CONTAIN SENSITIVE, PRIVILEGED OR CONFIDENTIAL INFORMATION WHICH MAY BE USED ONLY FOR ITS BENEFIT. THE DISCLOSURE OF THESE DRAWINGS TO UNAUTHORIZED PERSONS IS STRICTLY PROHIBITED. THIS DOCUMENT AND ALL COPIES MUST BE RETURNED UPON DEMAND.  
© COPYRIGHT KAWNEER COMPANY, INC., 2011

## STEP - 12 INSTALL INTERIOR GLAZING GASKETS

### STRUCTURAL GLAZED VERTICALS

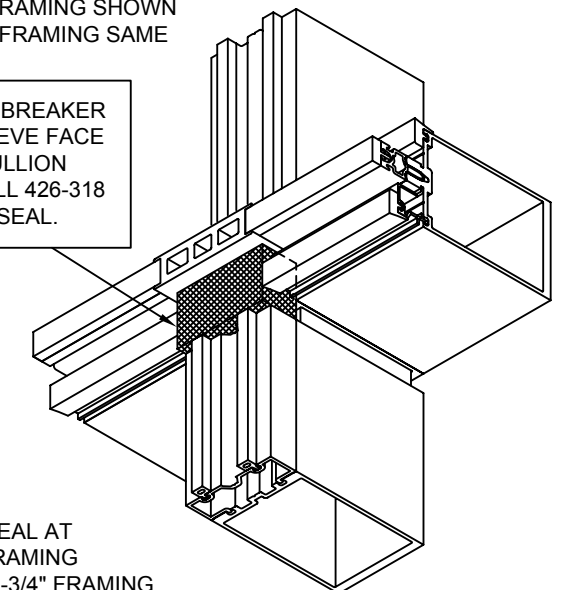


## STEP - 13 INSTALL INTERIOR SPONGE AIR SEALS

1/4" INFILL /1" FRAMING SHOWN  
1" INFILL/1-3/4" FRAMING SAME

APPLY BOND BREAKER TAPE TO SLEEVE FACE AND SEAL MULLION JOINT. INSTALL 426-318 SPONGE AIR SEAL.

USE 426-319 SPONGE AIR SEAL AT 1" INFILLS/1" FRAMING  
1-3/4" INFILLS/1-3/4" FRAMING



KAWNEER

1600UT SYSTEM 2  
INSTALLATION  
INSTRUCTIONS

Product Engineering & Development

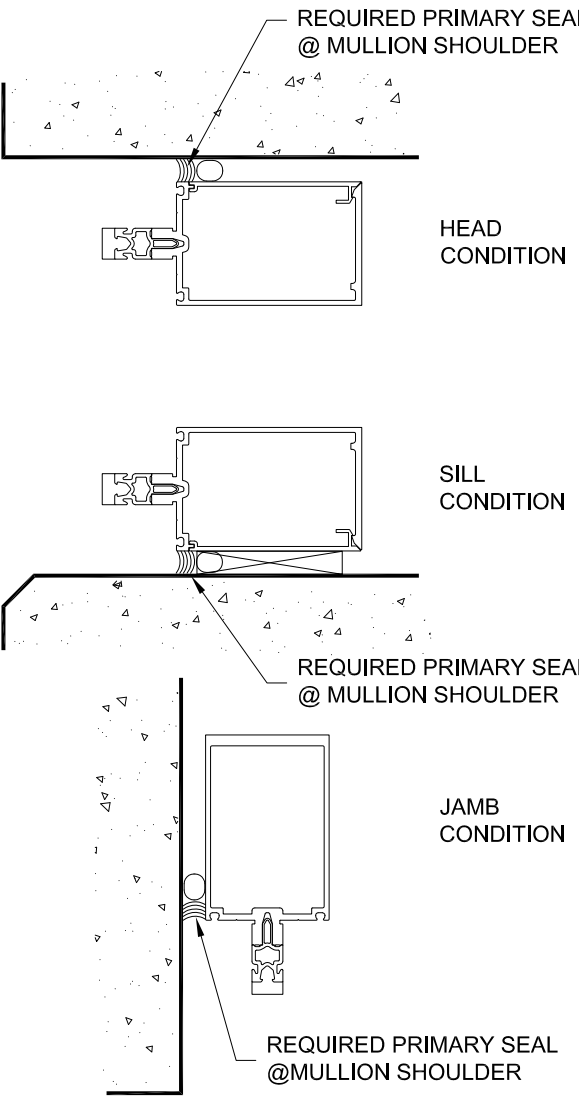
95449-8G  
01/21/11

171911 (SHEET 07 OF 12)

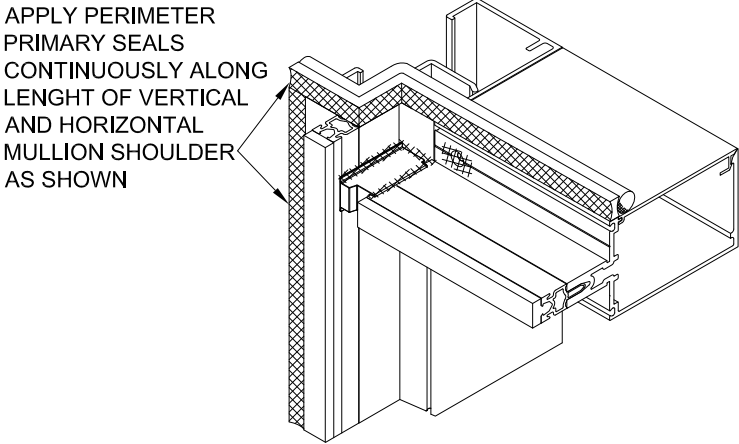
STEP - 14    INSTALL PERIMETER SEAL  
AT MULLION SHOULDER

PERIMETER PRIMARY SEALS ARE REQUIRED TO BE INSTALLED AT THE MULLION SHOULDER. PERIMETER SEALS AT THE MULLION SHOULDER MUST BE APPLIED BEFORE PRESSURE PLATES ARE INSTALLED.

INSTALL SUITABLY SIZED BACKER ROD AND APPLY GENEROUS, CONTINUOUS BEAD OF SEALANT AS SHOWN.



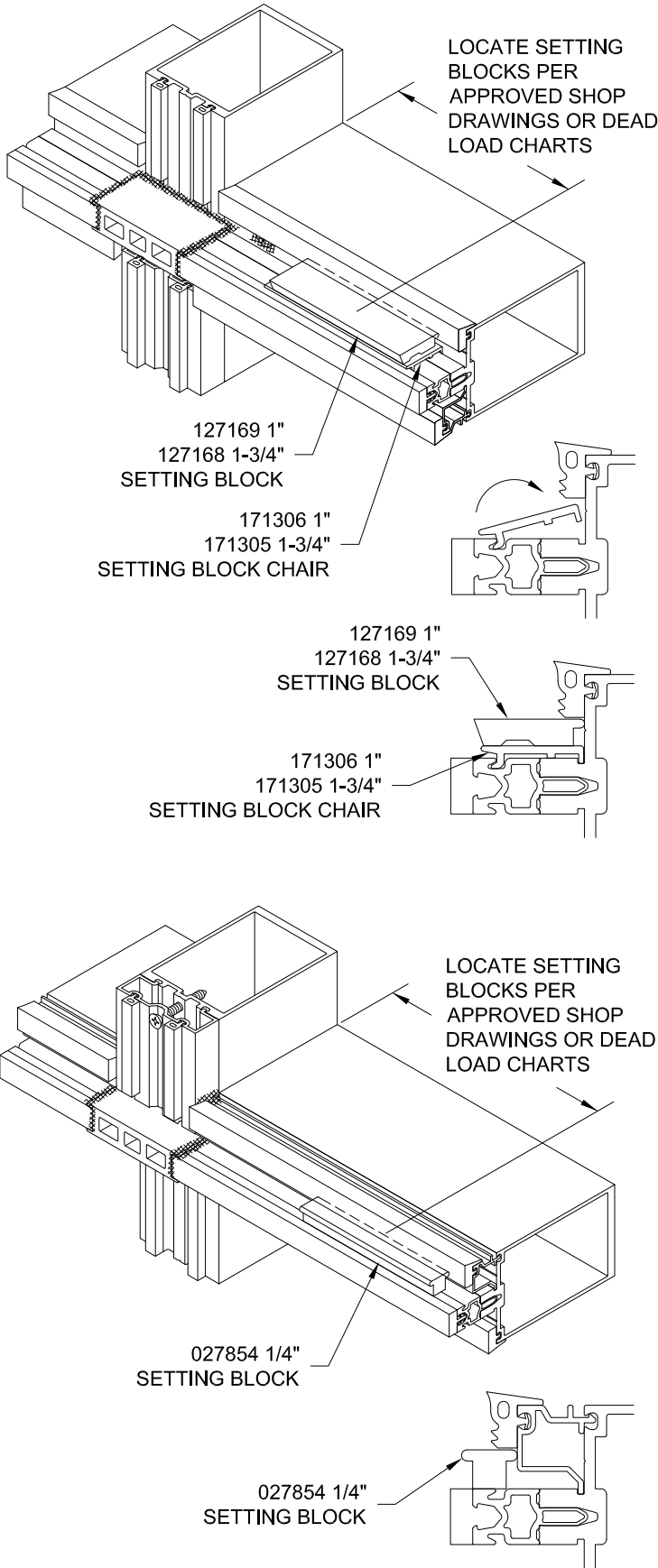
INSTALL PERIMETER SEAL FOR VERTICAL PERIMETER APPLICATION



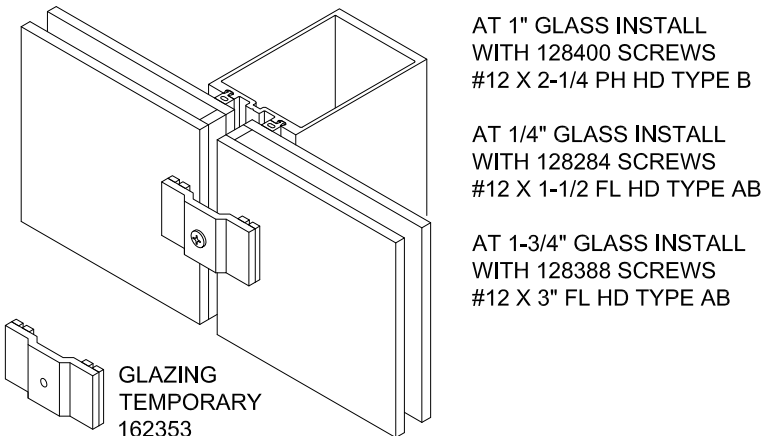
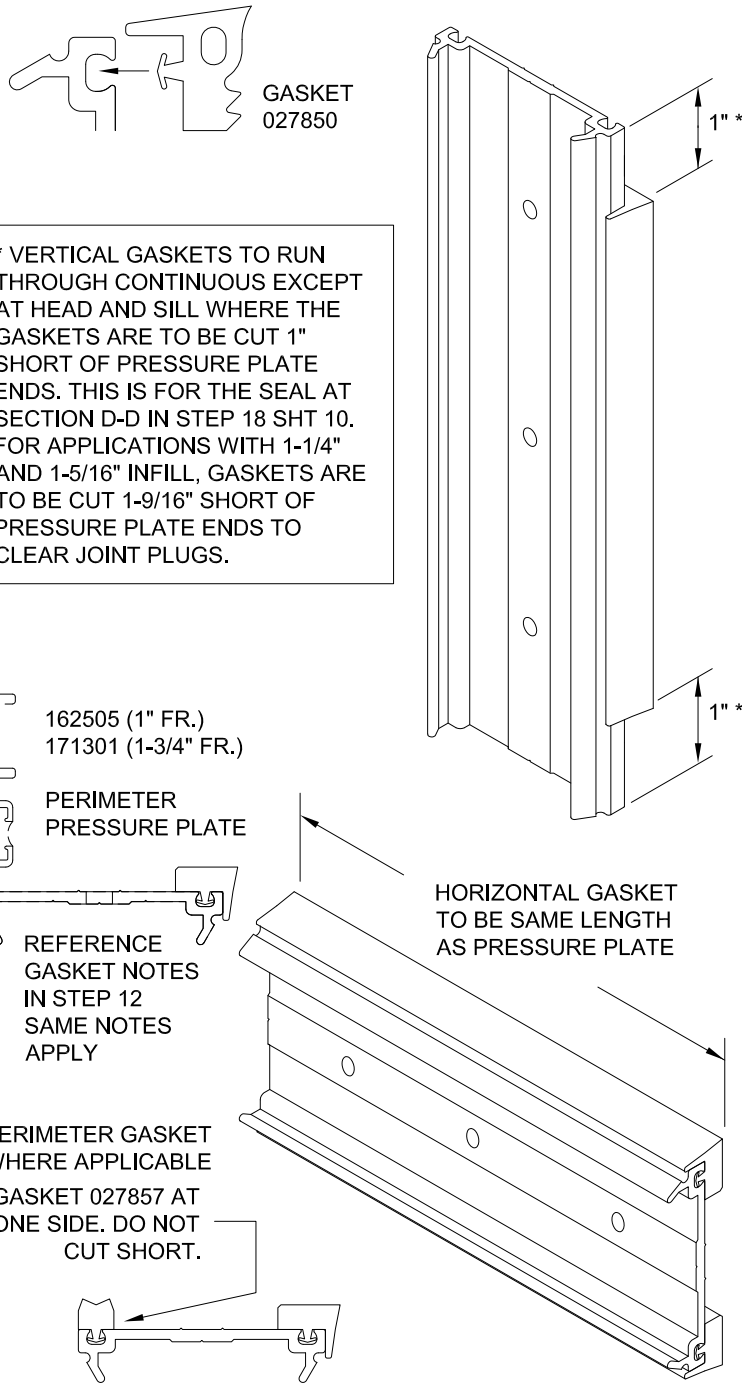
STEP - 15    INSTALL SETTING BLOCKS

STRUCTURAL GLAZED VERTICALS

CAPTURED VERTICAL DETAILS SIMILAR



STEP - 16    INSTALL EXTERIOR GASKETS  
INTO PRESSURE PLATES

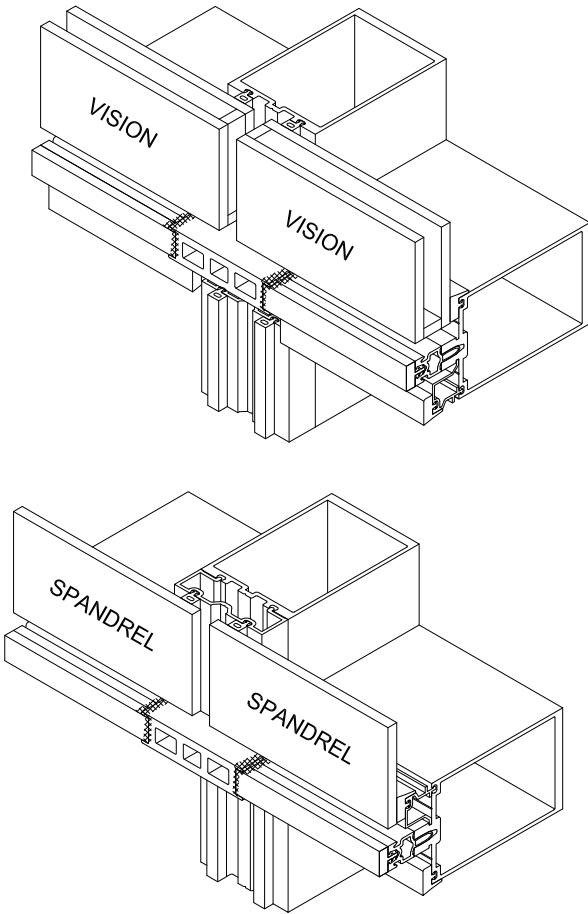


CONFIDENTIAL AND PROPRIETARY INFORMATION  
KAWNEER COMPANY INC.

THESE DRAWINGS ARE THE SOLE AND EXCLUSIVE PROPERTY OF KAWNEER AND CONTAIN SENSITIVE, PRIVILEGED OR CONFIDENTIAL INFORMATION WHICH MAY BE USED ONLY FOR ITS BENEFIT. THE DISCLOSURE OF THESE DRAWINGS TO UNAUTHORIZED PERSONS IS STRICTLY PROHIBITED. THIS DOCUMENT AND ALL COPIES MUST BE RETURNED UPON DEMAND.  
© COPYRIGHT KAWNEER COMPANY, INC., 2011

STEP - 17    INSTALL GLASS

STRUCTURAL GLAZED VERTICALS



THE LOCATION OF TEMPORARY EXTERIOR INFILL RETAINERS SHOULD BE AT A MAXIMUM SPACING OF 30" ON CENTER.

IF WINDS GREATER THAN 50 MPH (80KPH) ARE EXPECTED, ADDITIONAL TEMPORARIES MAY BE REQUIRED. CONSULT YOUR SEALANT AND/OR INFILL SUPPLIER FOR SPACING RECOMMENDATIONS.

AT CORNERS AND SPLAYS RETAINERS SHOULD BE MADE FROM A GOOD QUALITY HARDWOOD. THESE RETAINERS ARE NOT SUPPLIED BY KAWNEER.



1600UT SYSTEM 2  
INSTALLATION  
INSTRUCTIONS

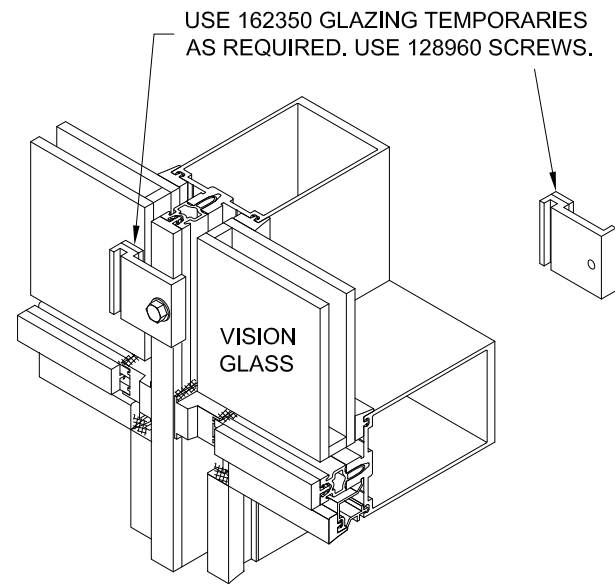
Product Engineering & Development

95449-107  
06/24/16

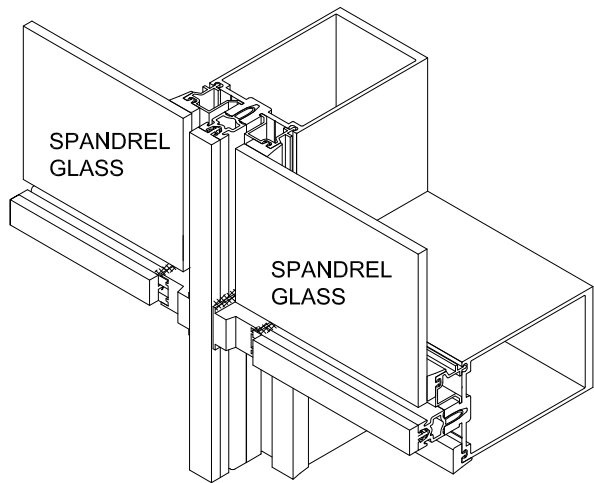


STEP - 17    INSTALL GLASS

CAPTURED VERTICALS



MAXIMUM TEMPORARY SPACING IS 30". IF WINDS GREATER THAN 50 MPH (80KPH) ARE EXPECTED, ADDITIONAL TEMPORARIES MAY BE REQUIRED. CONSULT YOUR SEALANT AND/OR INFILL SUPPLIER FOR SPACING RECOMMENDATIONS. INSTALL PRESSURE PLATES WHERE POSSIBLE.



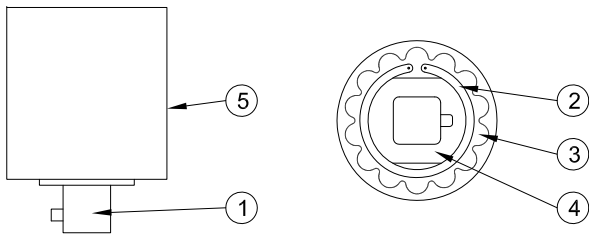
STEP - 18    INSTALL EXTERIOR PRESSURE PLATES



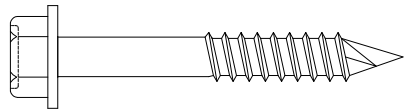
RECOMMEND USING TORQUE LIMIT TOOL 162399 SEE NOTE.

HOW TO SET TORQUE LIMIT

1. ATTACH ANY CALIBRATED TORQUE INDICATOR TO OUTPUT STUB (1) AND DETERMINE PRESENT TORQUE SETTING WHILE HOLDING THE BODY (5), OR VICE-VERSA.
2. REMOVE SNAP RING (2) AND LOCKING PLATE (3).
3. ADJUST NUT (4) WITH OPEN-END WRENCH : CLOCKWISE TO INCREASE TORQUE, COUNTER- CLOCKWISE TO DECREASE TORQUE.
4. OBTAIN NEW TORQUE READING WITH THE CALIBRATED TORQUE INDICATOR. REPEAT PRECEDING STEP IF MORE ADJUSTMENT IS NECESSARY TO REACH DESIRED LIMIT.
5. REPLACE LOCKING PLATE INTO NOTCHES AND INSTALL SNAP RING. IF LOCKING PLATE DOES NOT "SEAT", MOVE THE ADJUSTING NUT SLIGHTLY UNTIL IT DROPS IN PLACE. THE DIRECTION IS BEST DETERMINED BY WHETHER A MINIMUM TORQUE APPLICATION OR A MAXIMUM ONE IS DESIRED.



INSTALL PRESSURE PLATES WITH 128960 SELF DRILLING SCREWS USING A NON-IMPACT DRIVER AT LOW SPEED.



SCREWS ARE TO BE LOCATED 9" ON CENTER MAXIMUM. FOR PROJECTS DESIGNED FOR WIND LOADS GREATER THAN 60 PSF, APPLY PRESSURE PLATES SCREWS AT 6" ON CENTER.

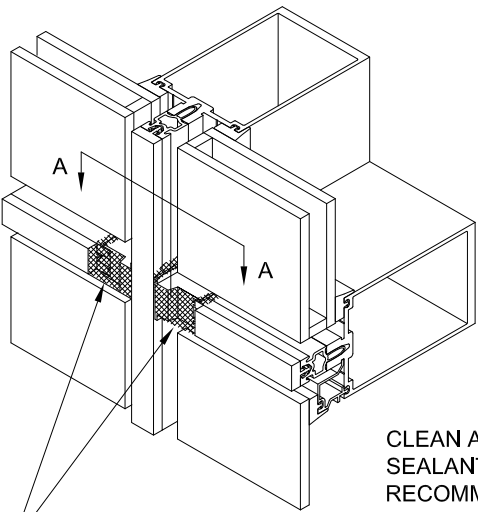
ALWAYS LOCATE A SCREW AS CLOSE AS POSSIBLE TO A HORIZONTAL JOINT. THIS WILL PROVIDE MAXIMUM PRESSURE FOR THE CRITICAL JOINT SEALS.

INSTALL HORIZONTAL PRESSURE PLATES WITH WEEP HOLES TOWARDS TOP OF HORIZONTAL.

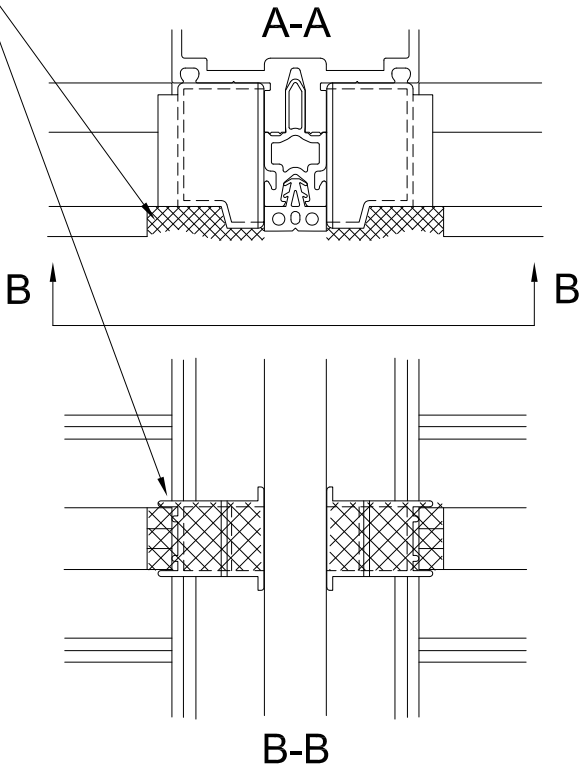
AT EACH HORIZONTAL AND VERTICAL PRESSURE PLATE INSTALL TWO SCREWS PART WAY, THEN INSTALL THE THIRD SCREW ALL THE WAY, AND THEN TIGHTEN THE FIRST TWO SCREWS. THIS ELIMINATES LATERAL WALKING OF THE PRESSURE PLATE POSITION.

TORQUE ALL SCREWS TO 90 TO 100 INCH POUNDS. DURING COLD WEATHER, TORQUE SCREWS TO 50 INCH POUNDS UNTIL ALL 4 SIDES HAVE BEEN CLAMPED. THEN TORQUE SCREWS TO 90 TO 100 INCH POUNDS.

INSTALL VERTICAL PRESSURE PLATES AT CAPTURED VERTICALS



JUST BEFORE INSTALLING VERTICAL PRESSURE PLATES APPLY A GENEROUS AMOUNT OF SEALANT TO THE JOINT PLUG FACE FILLING JOINTS AS SHOWN.



NOTE - THE TORQUE LIMIT TOOL WAS DESIGNED TO BE USED WITH A HAND DRIVEN DEVICE. THE TOOL CAN BE ADAPTED TO A DRILL MOTOR IF USED AT A MAXIMUM SPEED OF APPROX. 300 RPM. HIGHER SPEEDS CAN CAUSE OVERHEATING AND AFFECT THE ACCURACY. AFTER APPROX. 1 HOUR OF TOOL USAGE CHECK TORQUE SETTINGS WITH A TORQUE WRENCH.

CONFIDENTIAL AND PROPRIETARY INFORMATION  
KAWNEER COMPANY INC.

THESE DRAWINGS ARE THE SOLE AND EXCLUSIVE PROPERTY OF KAWNEER AND CONTAIN SENSITIVE, PRIVILEGED OR CONFIDENTIAL INFORMATION WHICH MAY BE USED ONLY FOR ITS BENEFIT. THE DISCLOSURE OF THESE DRAWINGS TO UNAUTHORIZED PERSONS IS STRICTLY PROHIBITED. THIS DOCUMENT AND ALL COPIES MUST BE RETURNED UPON DEMAND.  
© COPYRIGHT KAWNEER COMPANY, INC., 2011

CAPTURED VERTICALS

INTERMEDIATE HORIZONTAL VISION OVER SPANDREL

TOOL EXCESS SEALANT

HEAD CONDITION SILL SAME

THERMAL POCKET FILLER HEAD HORIZONTAL SILL SAME

171321 (1")  
171320 (1-3/4")  
THERMAL POCKET FILLER

TOOL EXCESS SEALANT



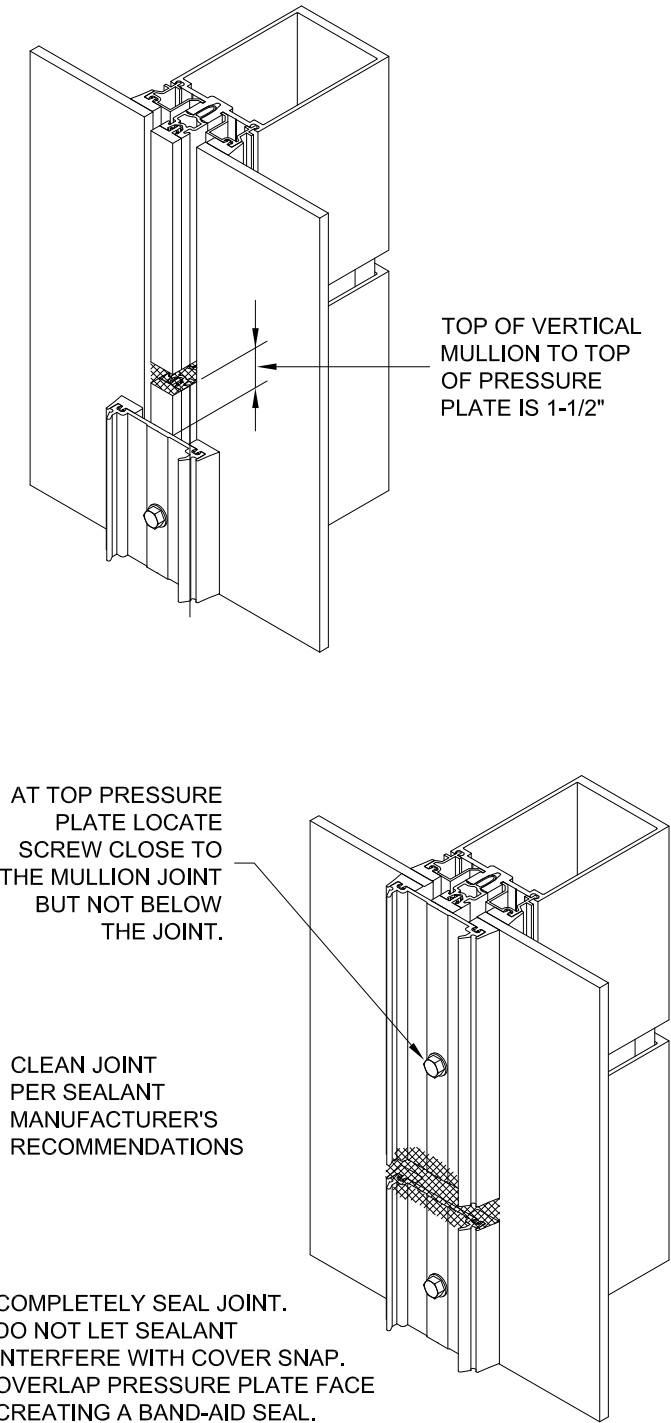
Product Engineering & Development

95449-107  
06/24/16

1600UT SYSTEM 2  
INSTALLATION  
INSTRUCTIONS

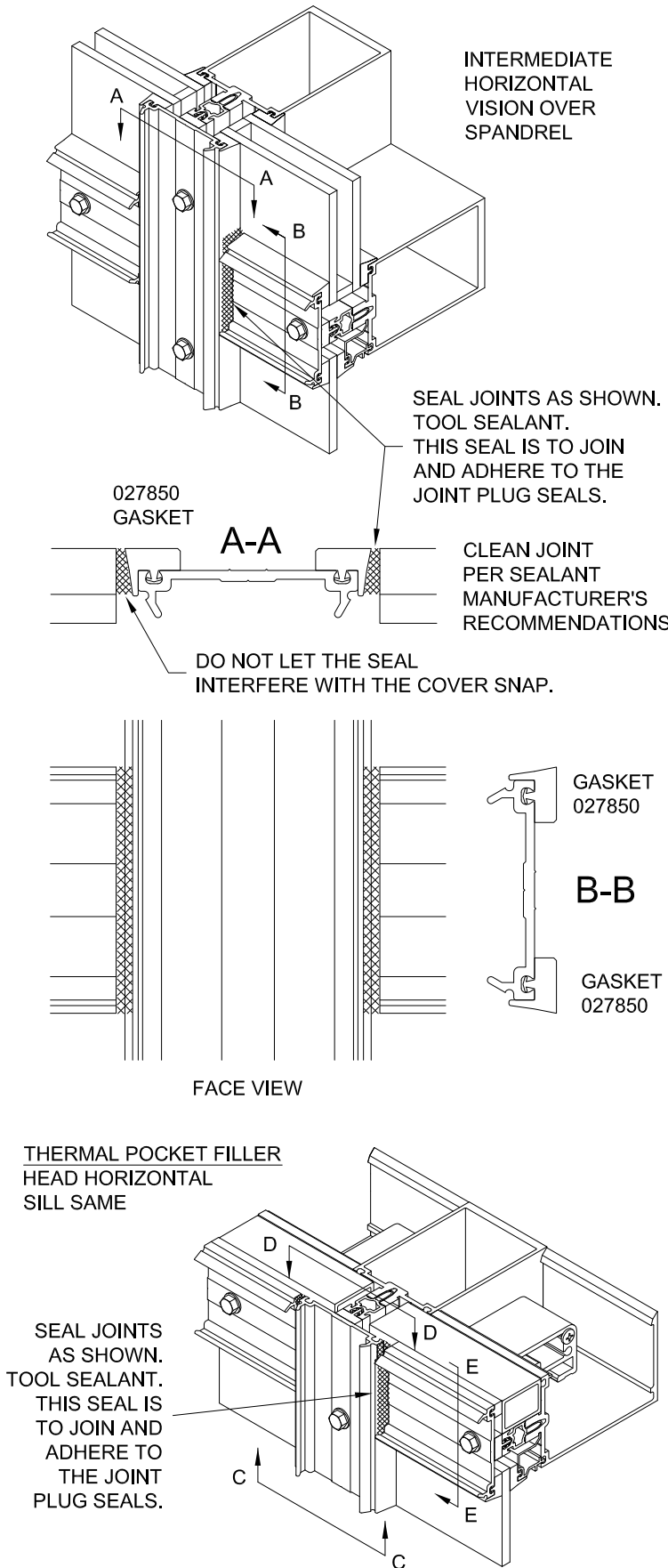
STEP - 18    INSTALL EXTERIOR  
PRESSURE PLATES

VERTICAL EXPANSION JOINTS  
AT CAPTURED VERTICALS

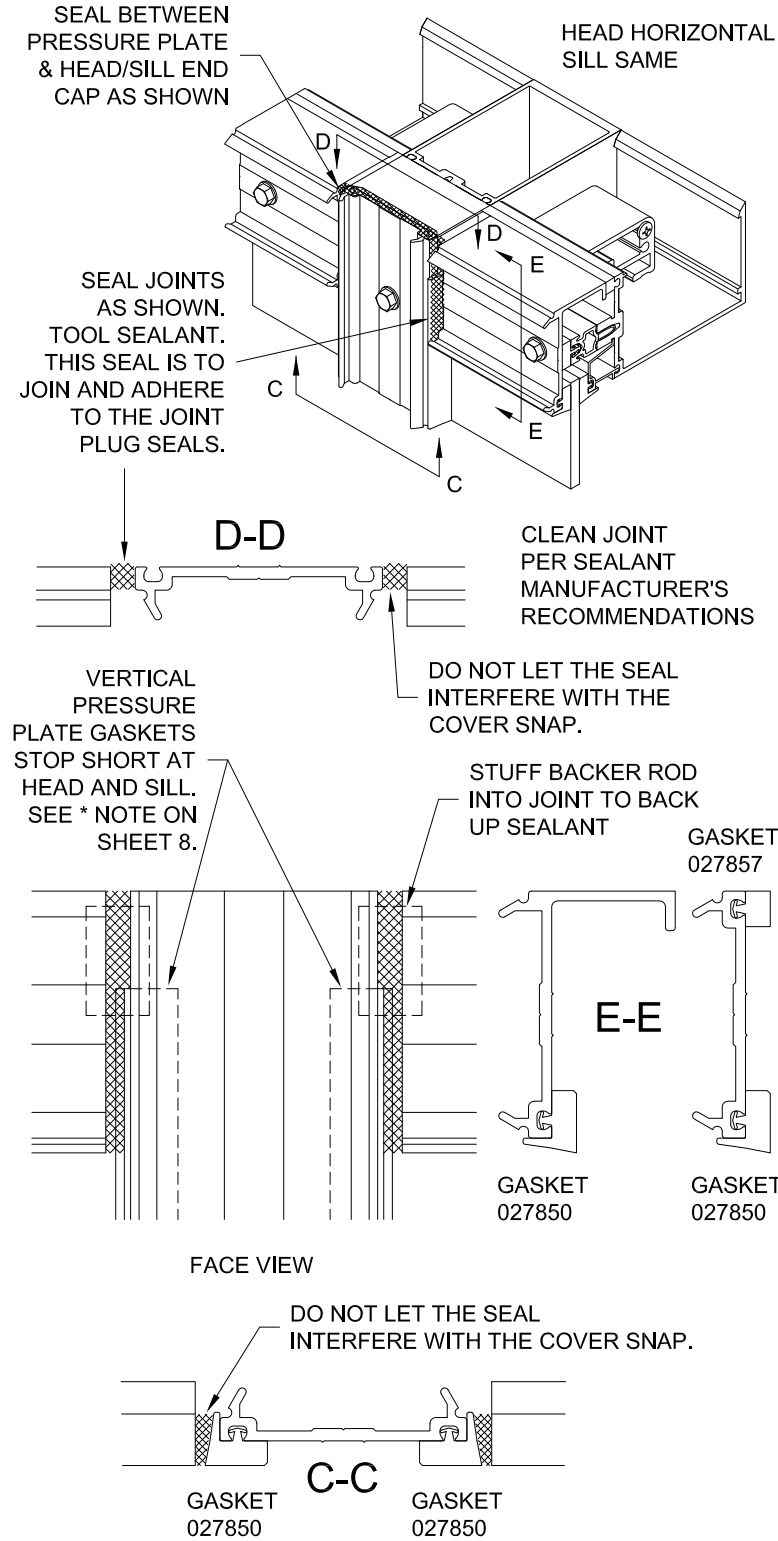


INSTALL HORIZONTAL PRESSURE PLATES  
AT CAPTURED VERTICALS

CENTER HORIZONTAL PRESSURE PLATES  
SO END GAPS ARE EQUAL.



INSTALL HORIZONTAL PRESSURE PLATES  
AT CAPTURED VERTICALS

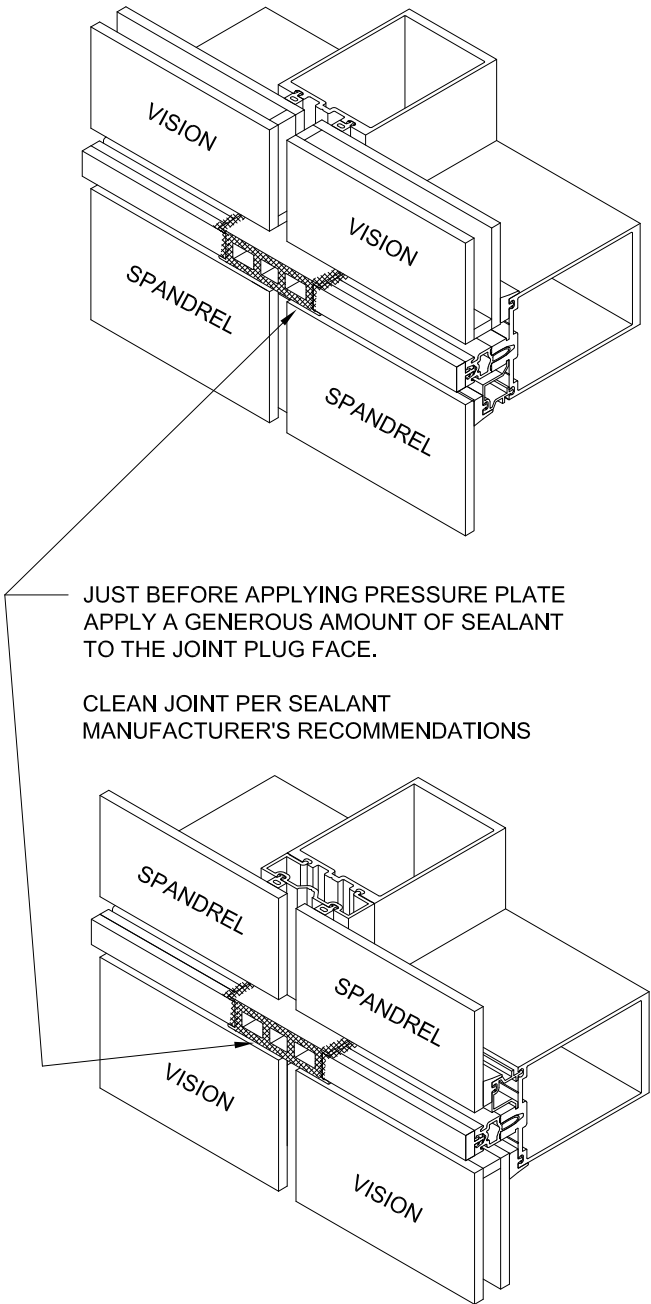


NOTE - THE TORQUE LIMIT TOOL WAS DESIGNED  
TO BE USED WITH A HAND DRIVEN DEVICE. THE  
TOOL CAN BE ADAPTED TO A DRILL MOTOR IF  
USED AT A MAXIMUM SPEED OF APPROX. 300 RPM.  
HIGHER SPEEDS CAN CAUSE OVERHEATING AND  
AFFECT THE ACCURACY. AFTER APPROX. 1 HOUR  
OF TOOL USAGE CHECK TORQUE SETTINGS WITH  
A TORQUE WRENCH.

CONFIDENTIAL AND PROPRIETARY INFORMATION  
KAWNEER COMPANY INC.

THESE DRAWINGS ARE THE SOLE AND EXCLUSIVE PROPERTY OF KAWNEER AND CONTAIN  
SENSITIVE, PRIVILEGED OR CONFIDENTIAL INFORMATION WHICH MAY BE USED ONLY FOR ITS  
BENEFIT. THE DISCLOSURE OF THESE DRAWINGS TO UNAUTHORIZED PERSONS IS STRICTLY  
PROHIBITED. THIS DOCUMENT AND ALL COPIES MUST BE RETURNED UPON DEMAND.  
© COPYRIGHT KAWNEER COMPANY, INC., 2011

INSTALL HORIZONTAL PRESSURE PLATES  
AT STRUCTURAL GLAZED VERTICALS



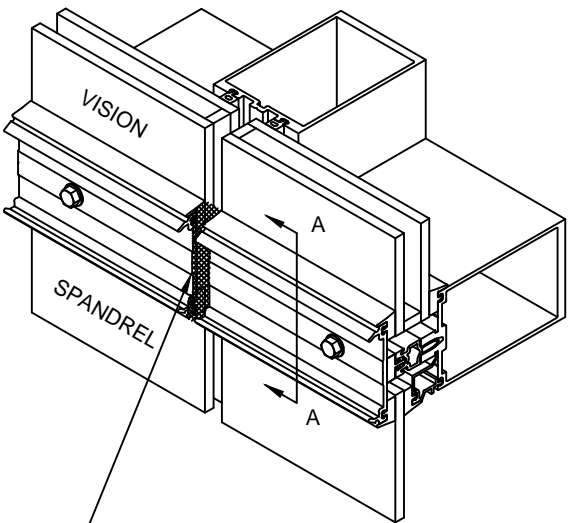
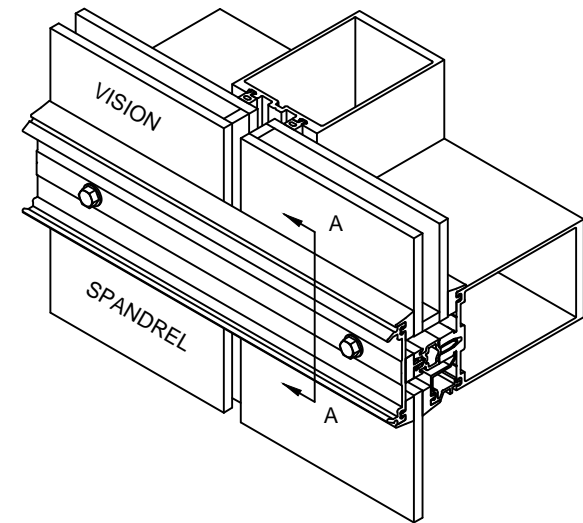
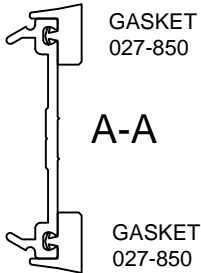
1600UT SYSTEM 2  
INSTALLATION  
INSTRUCTIONS

Product Engineering & Development

95449-107  
06/24/16

**STEP - 18    INSTALL EXTERIOR  
PRESSURE PLATES**

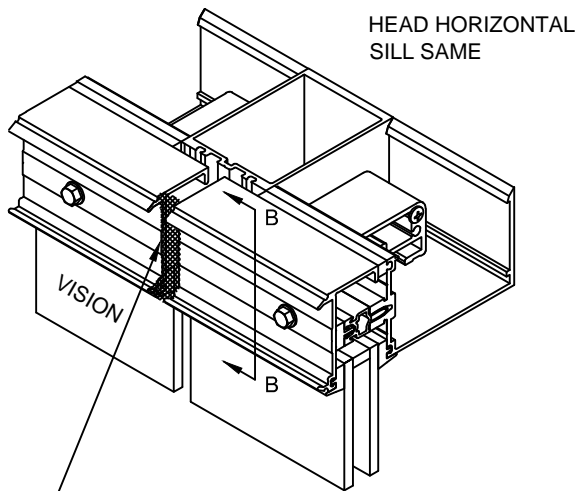
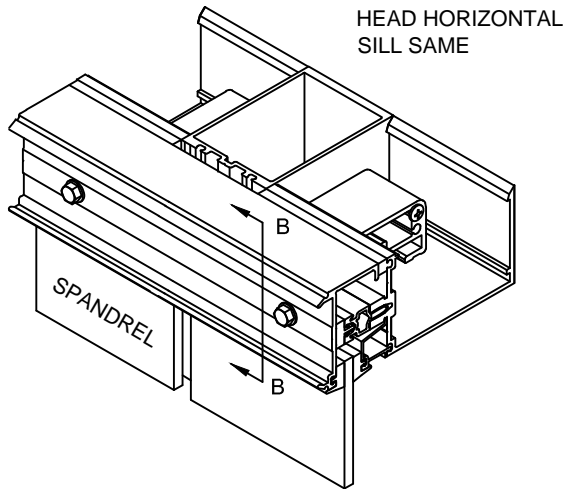
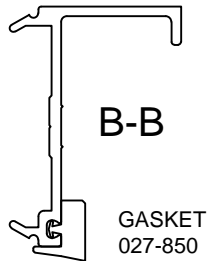
INSTALL HORIZONTAL PRESSURE PLATES  
AT STRUCTURAL GLAZED VERTICALS



COMPLETELY SEAL HORIZONTAL  
PRESSURE PLATE JOINT.  
DO NOT LET SEALANT INTERFERE  
WITH COVER SNAP.

CLEAN JOINT PER SEALANT  
MANUFACTURER'S RECOMMENDATIONS

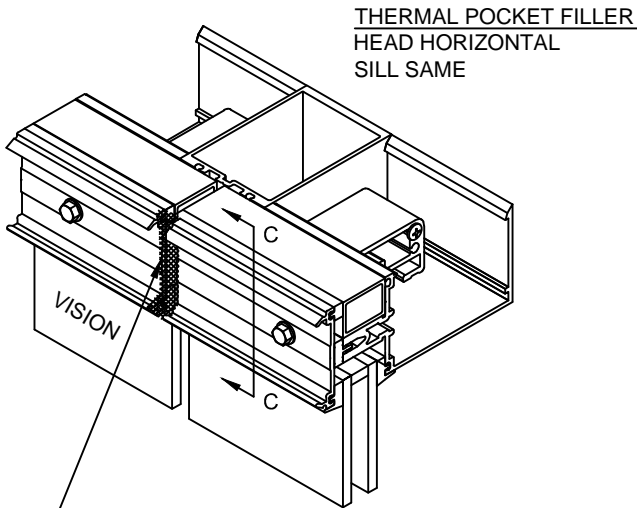
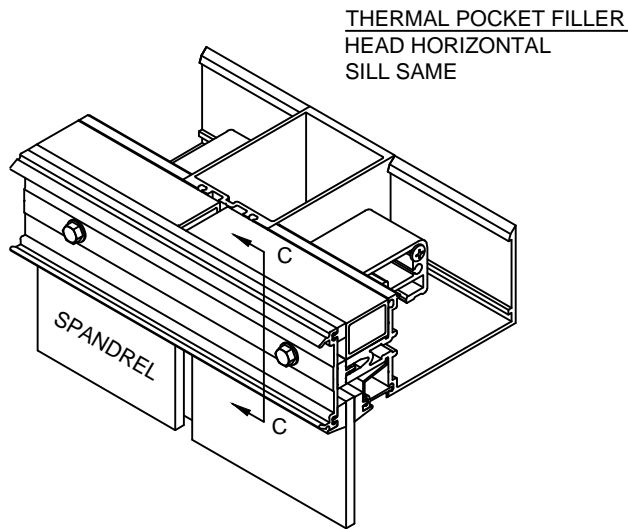
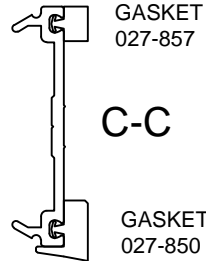
INSTALL HORIZONTAL PRESSURE PLATES  
AT STRUCTURAL GLAZED VERTICALS



COMPLETELY SEAL HORIZONTAL  
PRESSURE PLATE JOINT.  
DO NOT LET SEALANT INTERFERE  
WITH COVER SNAP.

CLEAN JOINT PER SEALANT  
MANUFACTURER'S RECOMMENDATIONS

INSTALL HORIZONTAL PRESSURE PLATES  
AT STRUCTURAL GLAZED VERTICALS



COMPLETELY SEAL HORIZONTAL  
PRESSURE PLATE JOINT.  
DO NOT LET SEALANT INTERFERE  
WITH COVER SNAP.

CLEAN JOINT PER SEALANT  
MANUFACTURER'S RECOMMENDATIONS

171911 (SHEET 11 OF 12)

CONFIDENTIAL AND PROPRIETARY INFORMATION  
KAWNEER COMPANY INC.

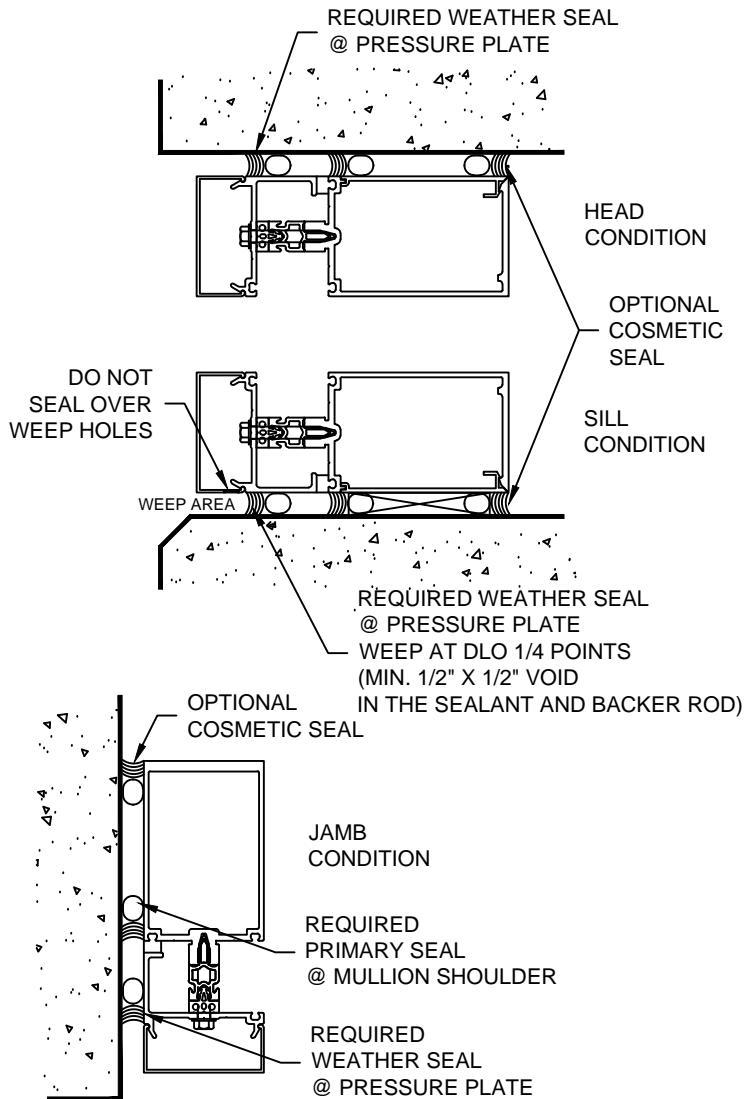
THESE DRAWINGS ARE THE SOLE AND EXCLUSIVE PROPERTY OF KAWNEER AND CONTAIN SENSITIVE, PRIVILEGED OR CONFIDENTIAL INFORMATION WHICH MAY BE USED ONLY FOR ITS BENEFIT. THE DISCLOSURE OF THESE DRAWINGS TO UNAUTHORIZED PERSONS IS STRICTLY PROHIBITED. THIS DOCUMENT AND ALL COPIES MUST BE RETURNED UPON DEMAND.  
© COPYRIGHT KAWNEER COMPANY, INC., 2011

**STEP - 19    INSTALL PERIMETER SEALS**

PERIMETER WEATHER SEALS ARE REQUIRED TO BE INSTALLED AT PRESSURE PLATE. PERIMETER PRIMARY SEALS AT THE MULLION SHOULDER ARE COVERED IN STEP 14.

PRESSURE PLATE SEALS SHOULD BE INSTALLED BEFORE COVERS ARE APPLIED WHEN COVERS DEEPER THAN 3/4" ARE USED. SILL COVERS MUST REMAIN OPEN TO ALLOW WATER DRAINAGE TO THE EXTERIOR.

INSTALL SUITABLY SIZED BACKER ROD AND APPLY GENEROUS, CONTINUOUS BEAD OF SEALANT AS SHOWN.



**KAWNEER**

**1600UT SYSTEM 2  
INSTALLATION  
INSTRUCTIONS**

Product Engineering & Development

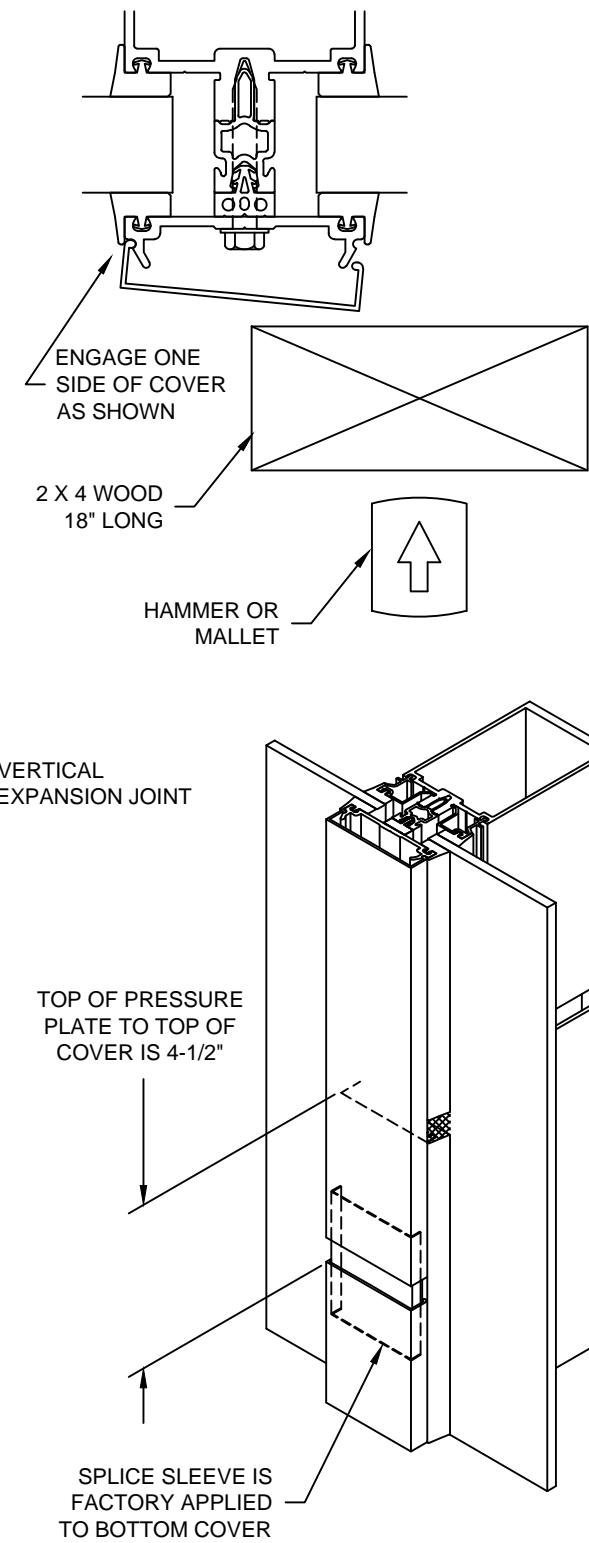
95449-094  
04/26/13

171911 (SHEET 11 OF 12)

STEP - 20 INSTALL EXTERIOR COVERS

CAPTURED VERTICALS

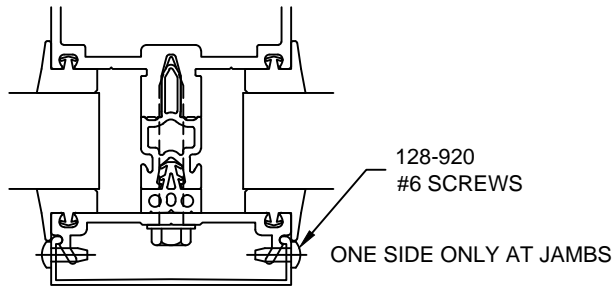
CARE MUST BE TAKEN TO AVOID DAMAGE TO COVERS DURING INSTALLATION. USE A 18" LONG PIECE OF 2 X 4 WOOD ALONG WITH A HAMMER OR MALLET TO SEAT THE COVER.



STEP - 20 INSTALL EXTERIOR COVERS

CAPTURED VERTICALS

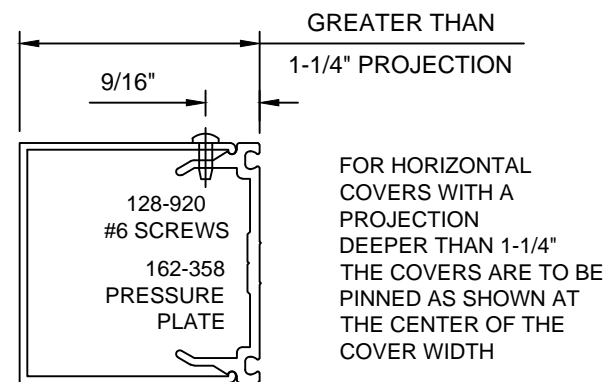
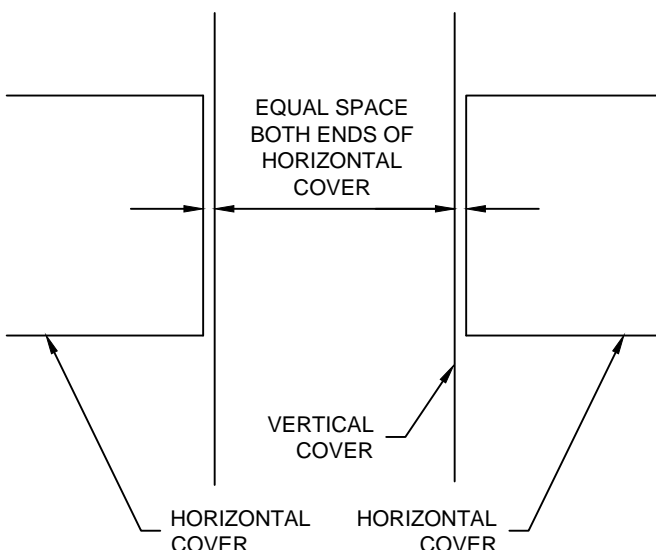
PINNING OF ALL VERTICAL COVERS IS REQUIRED FOR BOTH SIDES. DRILL A .106 DIA. HOLE (#36 DRILL) AND INSTALL 128-920 SCREWS #6 X 3/8" PAN HEAD TYPE B. LOCATE PINNING AT A HORIZONTAL CLOSEST TO THE COVER HEIGHT CENTER.



NOTE FOR 5" SIGHTLINE COVERS:

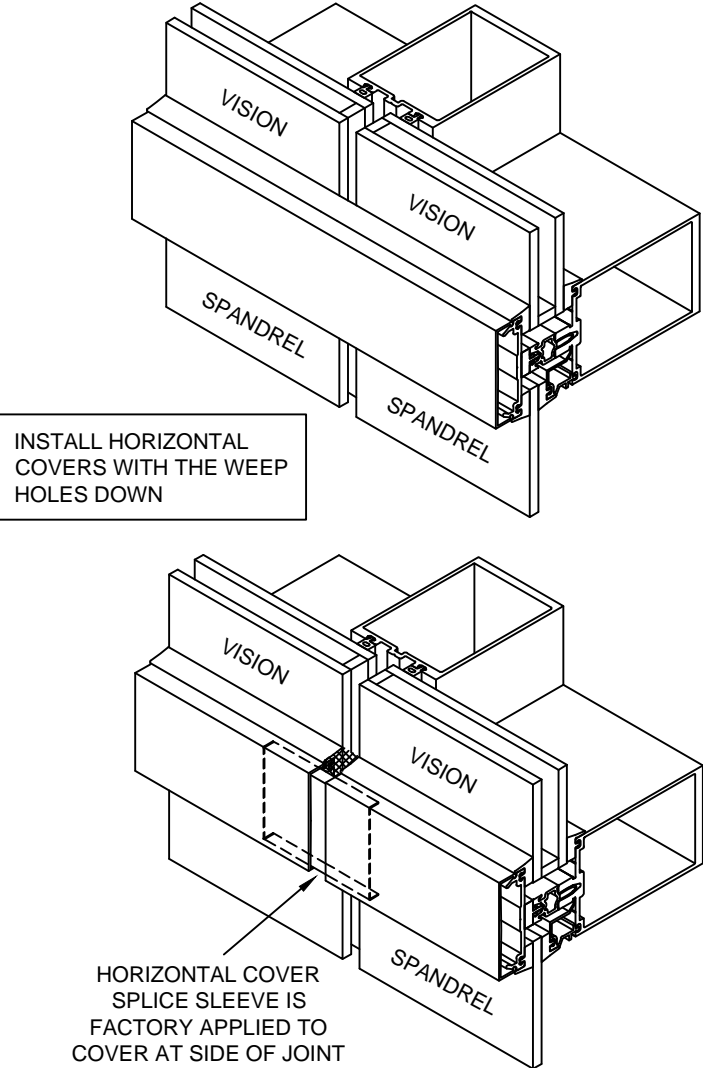
DUE TO LARGE EXTRUSION TOLERANCES, 5" SIGHTLINE COVERS MAY REQUIRE SEALANT OR PINNING TO HOLD IN PLACE.

INSTALL HORIZONTAL COVERS WITH THE WEEP HOLES DOWN



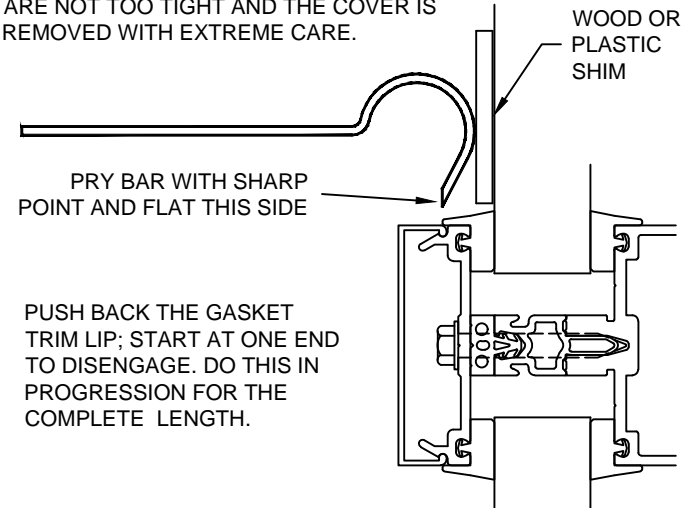
STEP - 20 INSTALL EXTERIOR COVERS

STRUCTURAL GLAZED VERTICALS



REMOVING COVERS

COVERS CAN BE SAVED IF TOLERANCES ARE NOT TOO TIGHT AND THE COVER IS REMOVED WITH EXTREME CARE.



THESE DRAWINGS ARE THE SOLE AND EXCLUSIVE PROPERTY OF KAWNEER AND CONTAIN SENSITIVE, PRIVILEGED OR CONFIDENTIAL INFORMATION WHICH MAY BE USED ONLY FOR ITS BENEFIT. THE DISCLOSURE OF THESE DRAWINGS TO UNAUTHORIZED PERSONS IS STRICTLY PROHIBITED. THIS DOCUMENT AND ALL COPIES MUST BE RETURNED UPON DEMAND. © COPYRIGHT KAWNEER COMPANY, INC., 2011

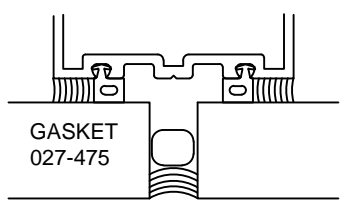
STEP - 21 INSTALL STRUCTURAL AND WEATHER SEALS

KAWNEER DOES NOT SUPPLY SEALANT. SEALANT TO BE SILICONE AS RECOMMENDED BY THE SEALANT MANUFACTURER. INFILL AND METAL TO BE CLEANED PER THE SEALANT MANUFACTURER'S RECOMMENDATIONS. SEALANT BACKUP ROD TO BE PER THE SEALANT MANUFACTURER'S RECOMMENDATIONS.

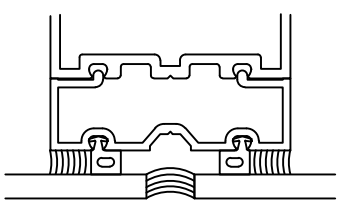
FILL SPACE BETWEEN INSULATED UNITS AND BEHIND SINGLE GLAZED UNITS WITH RECOMMENDED BACKUP ROD. APPLY STRUCTURAL SEAL AND WEATHER SEAL AS SHOWN.

ALLOW STRUCTURAL SEAL TO CURE PER SEALANT MANUFACTURER'S RECOMMENDATIONS. THEN REMOVE TEMPORARY RETAINERS, SEAL FASTENER HOLES AND FILL WEATHER SEAL HOLES.

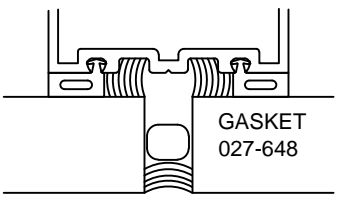
VISION AT INTERIOR STRUCTURAL SEAL



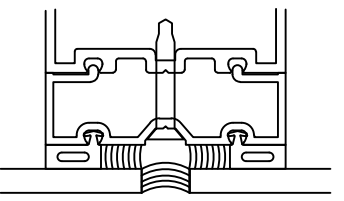
SPANDREL AT INTERIOR STRUCTURAL SEAL



VISION AT EXTERIOR STRUCTURAL SEAL



SPANDREL AT EXTERIOR STRUCTURAL SEAL



EXTERIOR STRUCTURAL SEAL MUST BE APPLIED IN THREE STEPS. EACH SIDE SEPARATELY; THEN THE WEATHER SEAL.



1600UT SYSTEM 2 INSTALLATION INSTRUCTIONS

Product Engineering & Development