

USE THESE INSTRUCTIONS IN CONJUNCTION WITH INSTALLATION INSTRUCTIONS 162-970.

90° OUTSIDE CORNER

CORNER NOTES

INSTALL END CAPS PER SHEET #2.

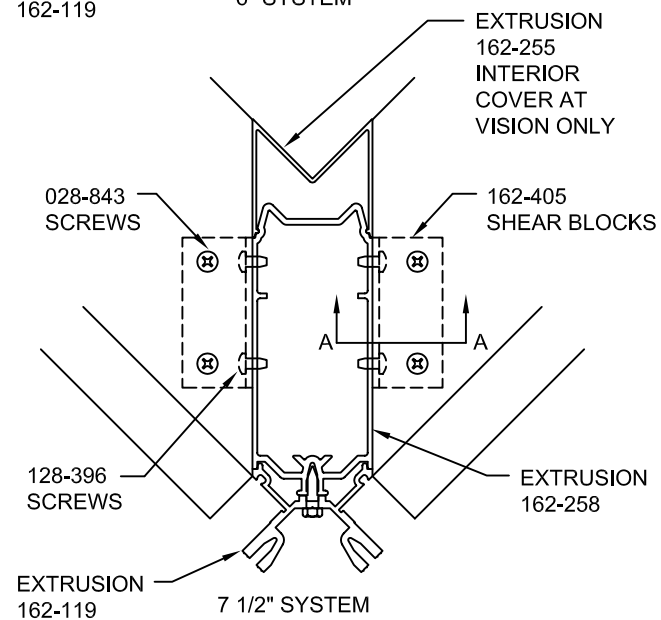
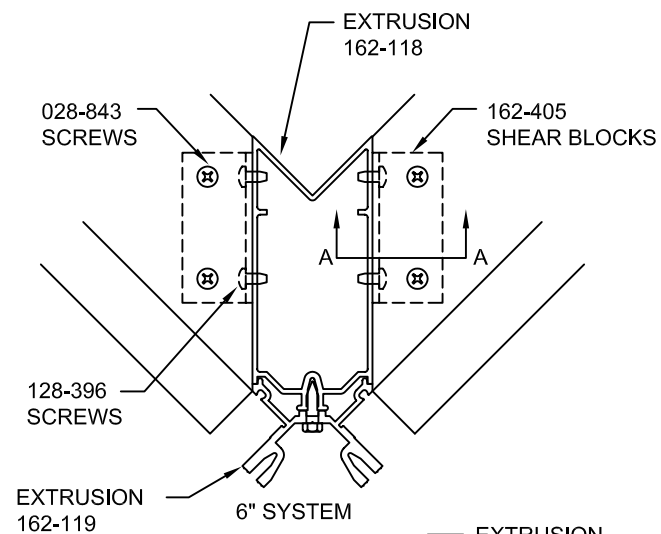
STANDARD JOINT PLUGS AND SEALING METHODS ARE USED UNLESS NOTED OTHERWISE IN THE FOLLOWING DETAILS.

GASKETS, PRESSURE PLATES AND EXTERIOR COVERS ARE INSTALLED AND SEAL THE SAME AS SHOWN IN INSTRUCTIONS 162-970.

GLAZING TEMPORARIES ARE NOT INCLUDED FOR CORNER CONDITIONS.

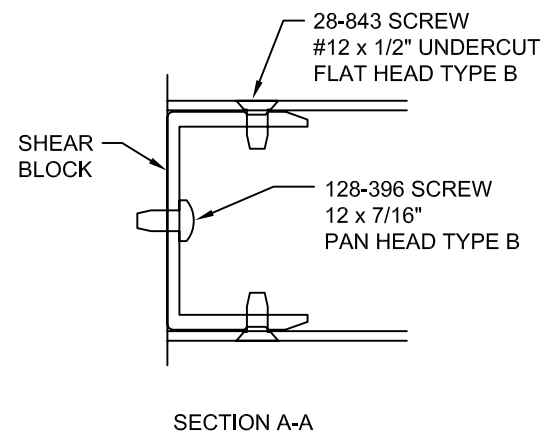
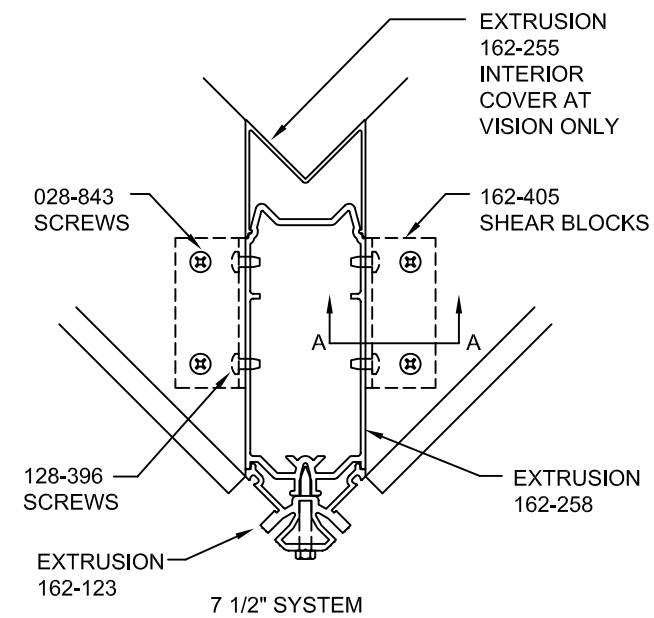
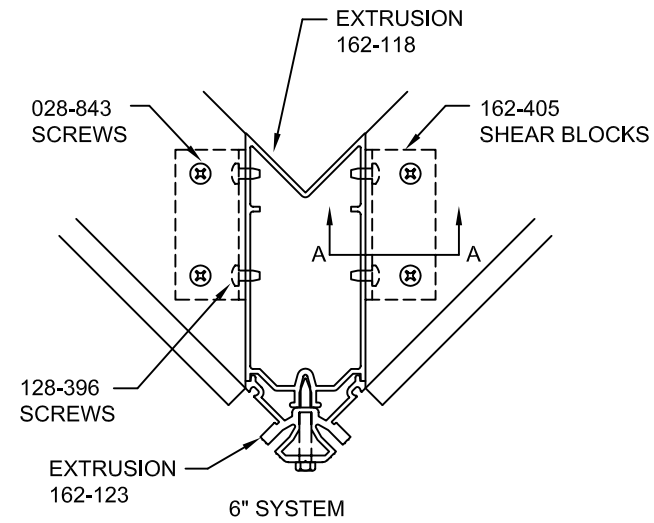
NOTE:
USE TUBLAR HORIZONTALS WHERE POSSIBLE. WHEN USING OPEN BACK HORIZONTALS AT CORNER MULLIONS, OPEN BACK FILLER AND HORIZONTAL MAY INTERFERE WITH SHEAR BLOCK. NOTCH PARTS FOR CLEARANCE AS NECESSARY.

SHEAR BLOCK ASSEMBLY



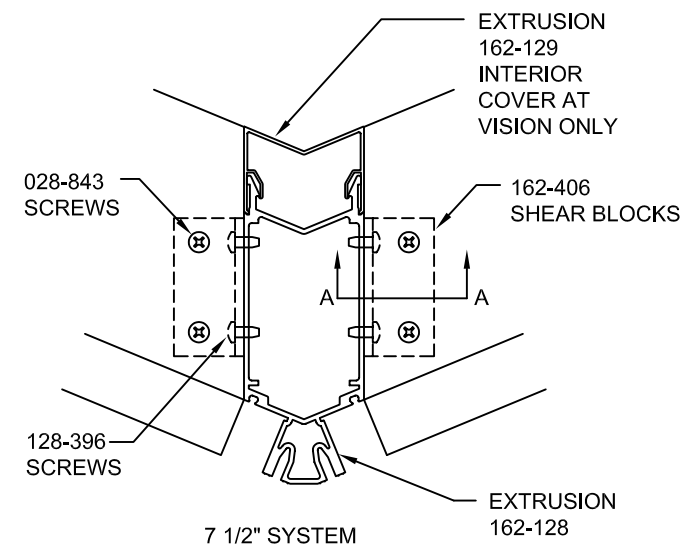
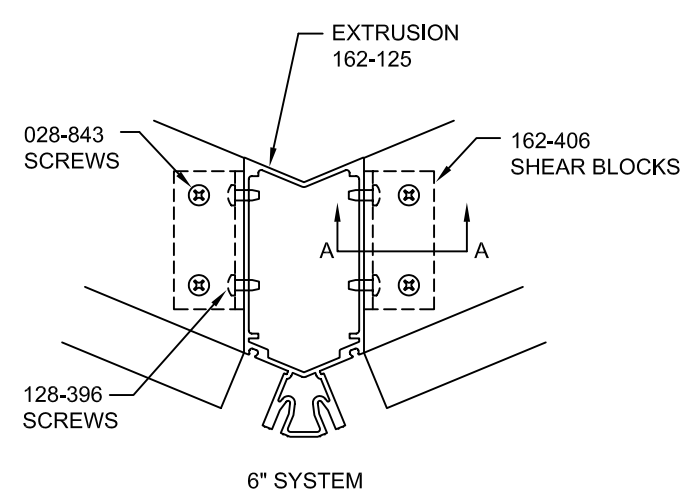
90° OUTSIDE CORNER

SHEAR BLOCK ASSEMBLY



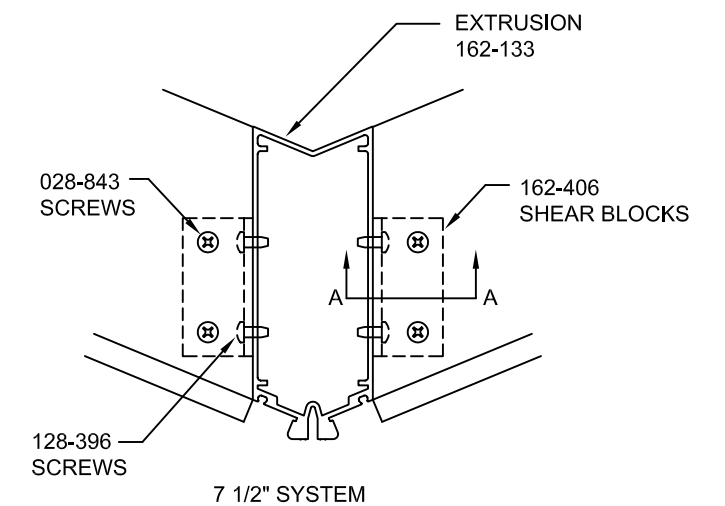
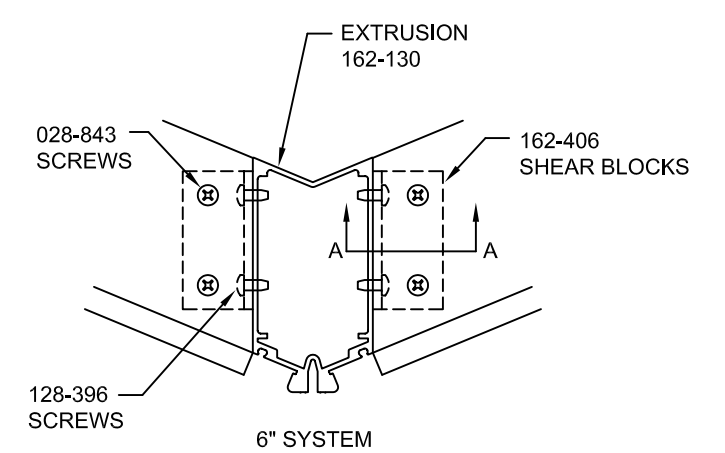
135° OUTSIDE CORNER

SHEAR BLOCK ASSEMBLY



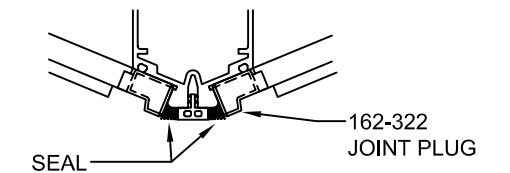
135° OUTSIDE CORNER

SHEAR BLOCK ASSEMBLY



ADDITIONAL SEAL FOR ABOVE VERTICALS

AT JOINT PLUGS FILL VOID BETWEEN THERMAL BREAK AND JOINT PLUG WITH SEALANT. SEAL AT THE SAME TIME AS THE TYPICAL INSTRUCTIONS DO.



Kawneer
An Alcoa Company

1600 SYSTEM¹
CORNER INSTRUCTIONS

PART NUMBER
162-972 1 OF 3

95449-65
12/02/05

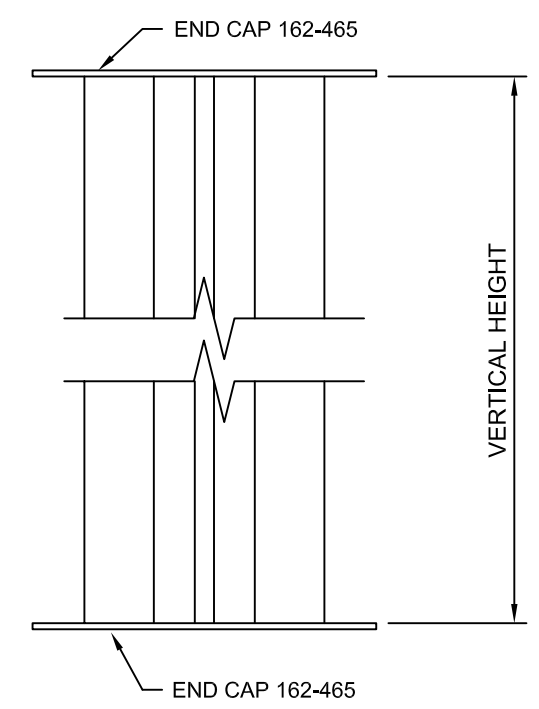
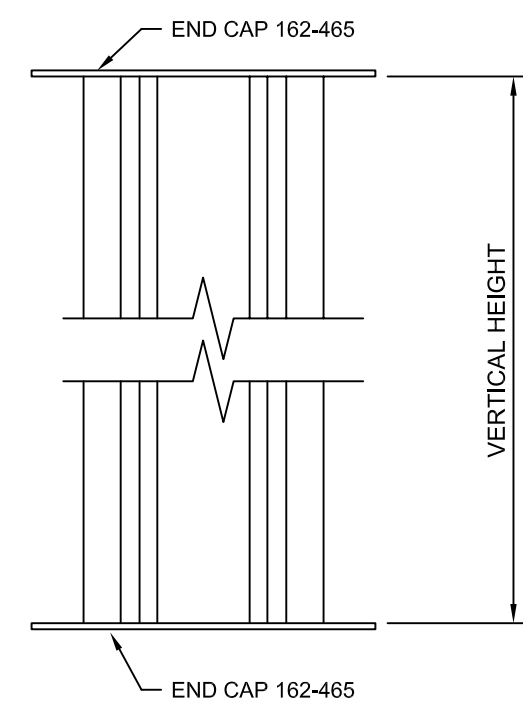
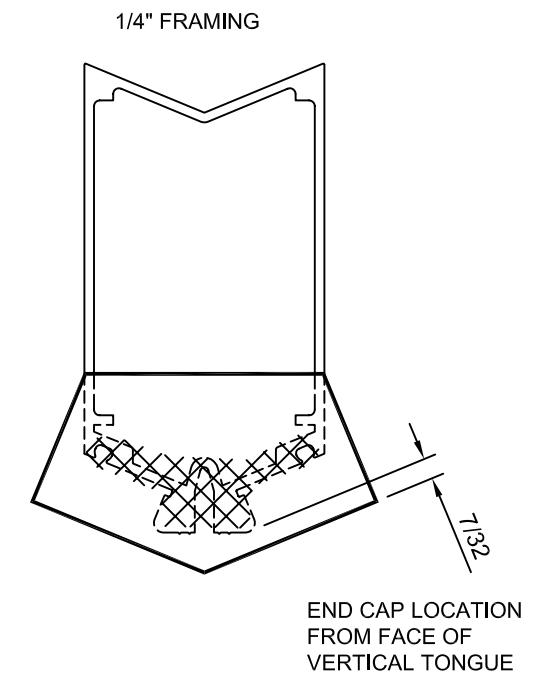
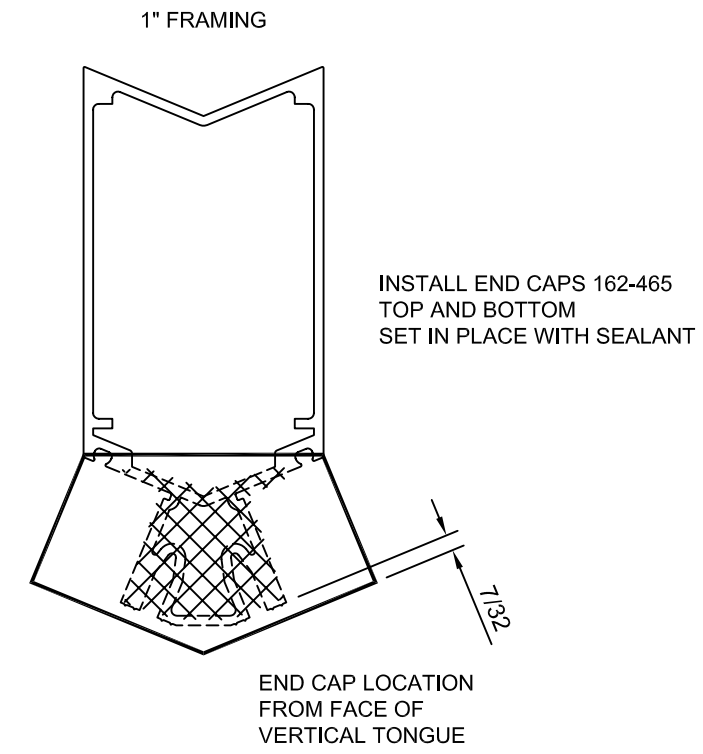
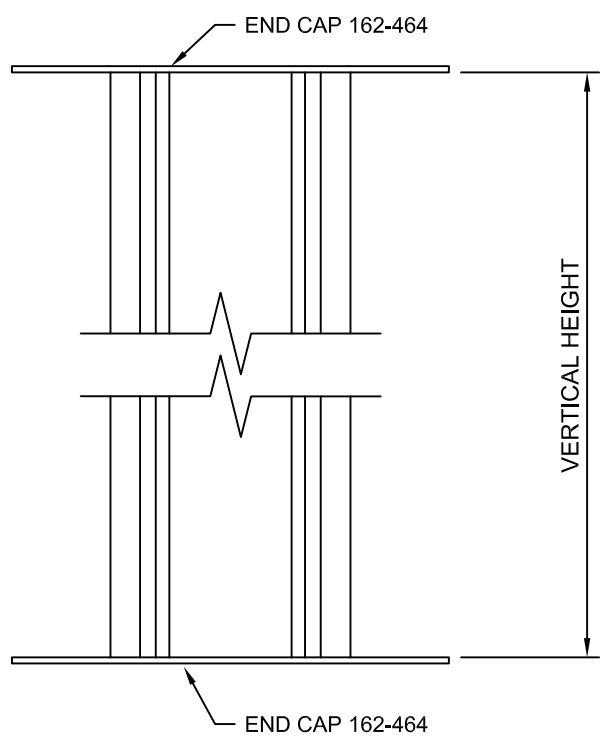
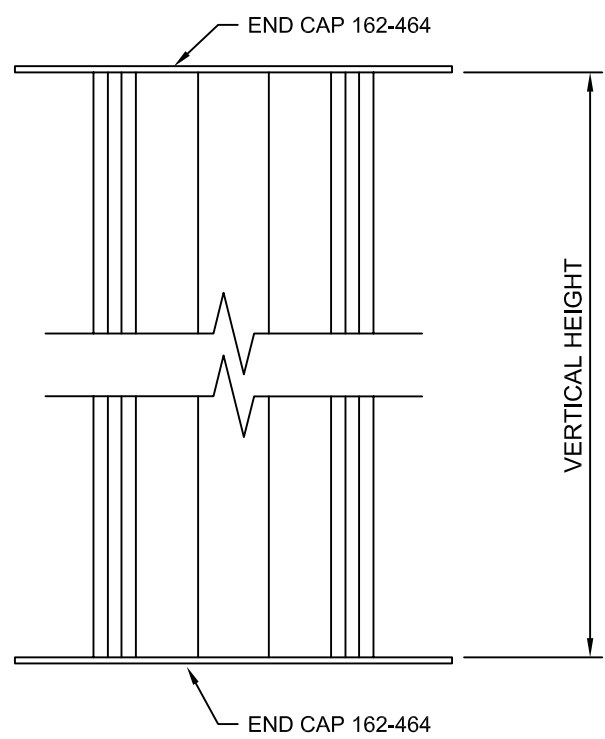
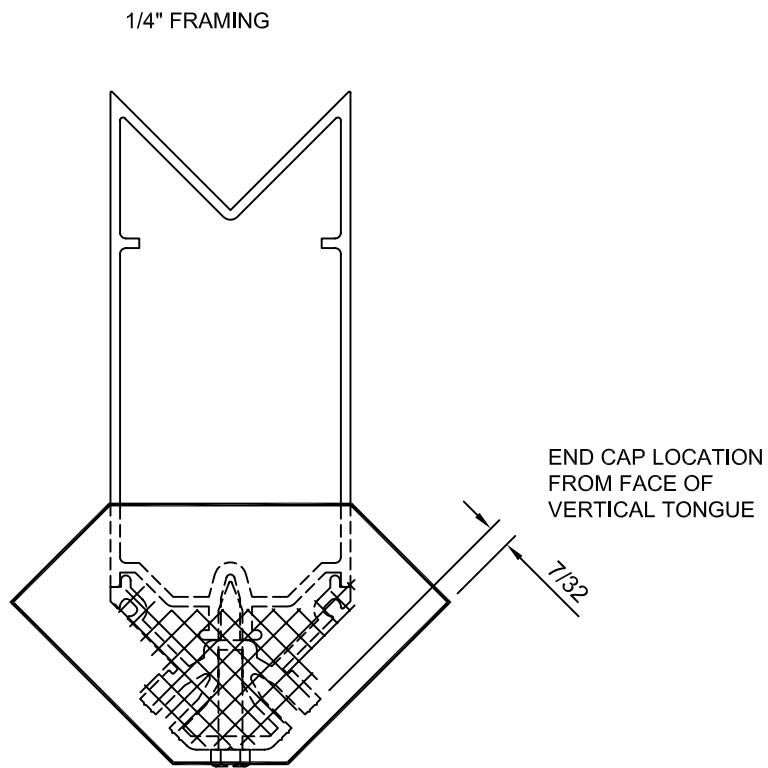
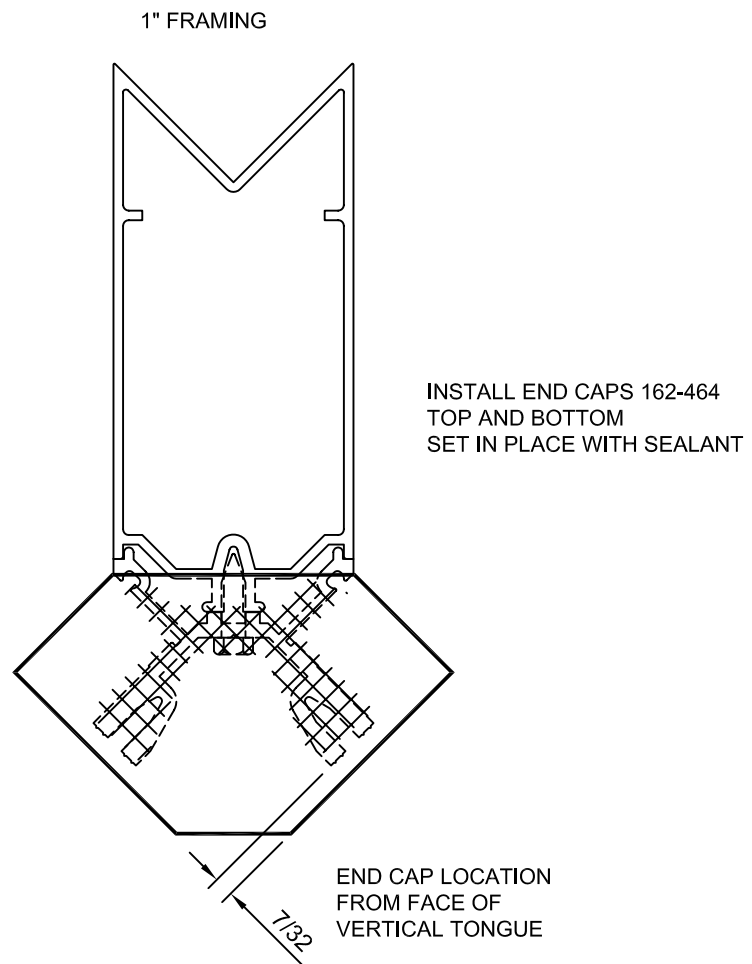
DRAWING:


ORDER:

SHT:

90° OUTSIDE CORNER

135° OUTSIDE CORNER



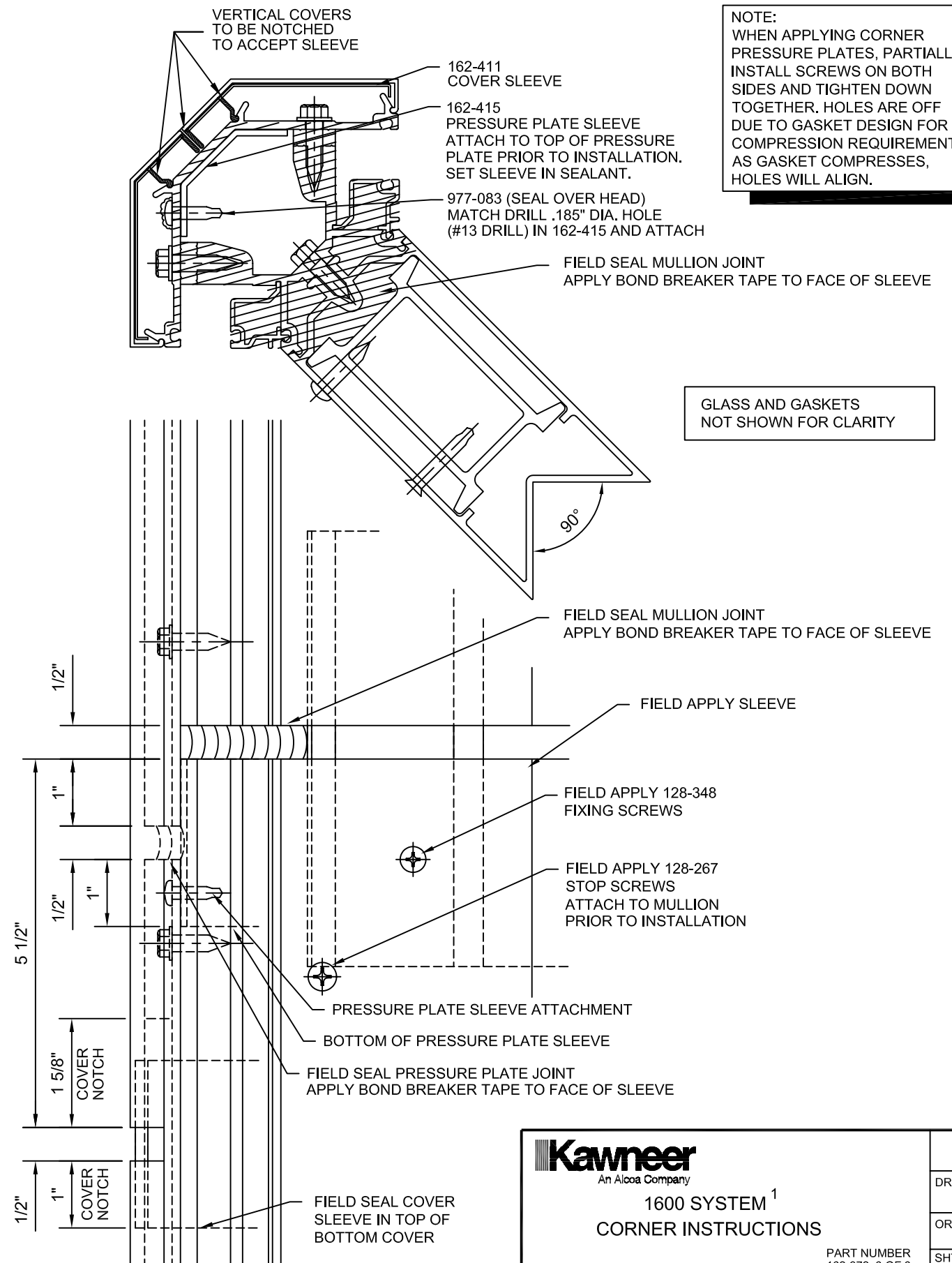
 An Alcoa Company 1600 SYSTEM¹ CORNER INSTRUCTIONS	95449-65 12/02/05
	DRAWING:
	ORDER:
	PART NUMBER 162-972 2 OF 3

90° OUTSIDE CORNER


VERTICAL SPLICE

REFERENCE 162-970 INSTALLATION INSTRUCTIONS FOR SEALANT APPLICATIONS.

NOTE:
WHEN APPLYING CORNER PRESSURE PLATES, PARTIALLY INSTALL SCREWS ON BOTH SIDES AND TIGHTEN DOWN TOGETHER. HOLES ARE OFF DUE TO GASKET DESIGN FOR COMPRESSION REQUIREMENTS. AS GASKET COMPRESSES, HOLES WILL ALIGN.



GLASS AND GASKETS NOT SHOWN FOR CLARITY

 An Alcoa Company 1600 SYSTEM¹ CORNER INSTRUCTIONS	95449-65 12/02/05
	DRAWING:
	ORDER:
	SHT:
PART NUMBER 162-972 3 OF 3	