

VERSOLEIL OUTRIGGER SUNSHADE INSTALLATION INSTRUCTIONS FOR 1600 SS AND 1630 SS IR CAPTURED

THE FOLLOWING INSTRUCTIONS ARE FOR THE INSTALLATION OF THE KAWNEER VERSOLEIL OUTRIGGER SUNSHADE. USE THESE INSTRUCTIONS IN CONJUNCTION WITH 1600 SS CURTAIN WALL INSTALLATION INSTRUCTIONS (169970) OR 1630 SS IR CURTAIN WALL INSTALLATION INSTRUCTIONS (176970).

FRAME ASSEMBLY

VERTICAL MULLIONS WILL BE LABELED AND MUST BE MATCHED TO SHOP DRAWINGS BEFORE PROCEEDING WITH ANY ASSEMBLY. FAILURE TO PROPERLY ORIENT OR POSITION THE VERTICAL MULLIONS WILL PROHIBIT INSTALLATION OF THE SUNSHADE.

EXTERIOR COVERS

WHEN USING 1" COVERS, THE SUNSHADE ANCHOR CLIP MUST BE INSTALLED BEFORE THE COVERS. THE SUNSHADE IS TO BE INSTALLED AFTER THE COVERS.

WHEN USING 3-1/8" COVERS, THE SUNSHADE ANCHOR CLIP AND THE SUNSHADE MUST BE INSTALLED BEFORE INSTALLING THE COVERS.

INSTALL 162310 THERMAL BREAK (1600 SS) OR 176310 THERMAL BREAK (1630 SS IR)



162310 (1600 SS)



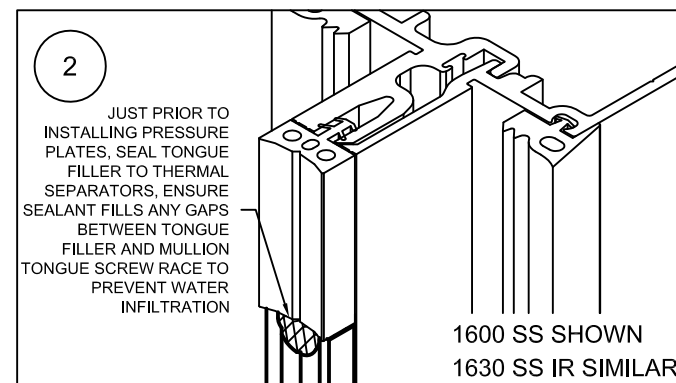
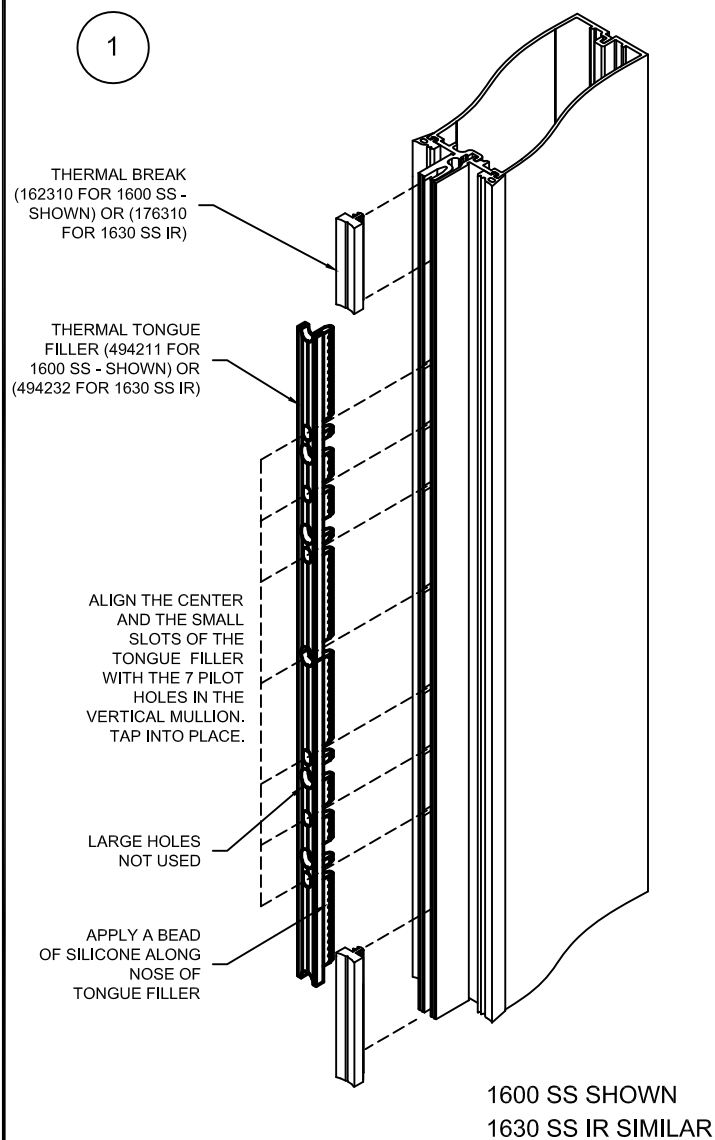
176310 (1630 SS IR)

INSTALLATION OF THE THERMAL BREAK ON HORIZONTAL MEMBERS REMAINS UNCHANGED.

SUNSHADES REQUIRE THE USE OF TWO TONGUE FILLERS AT EVERY ANCHOR CLIP LOCATION. CHECK SHOP DRAWINGS FOR POSITION OF ANCHOR CLIPS. FOR EACH LOCATION OF AN ANCHOR CLIP, THE VERTICAL MULLION HAS BEEN PREPPED WITH SEVEN PILOT HOLES. RUN A BEAD OF SEALANT ALONG THE MULLION TONGUE FACE AND INTO THE SCREW BOSS AT EACH TONGUE FILLER LOCATION AND TAP TONGUE FILLER INTO PLACE. ALIGN THE CLEAR HOLES OF THE TONGUE FILLERS WITH THE SEVEN HOLES IN THE MULLION. ADJUST TONGUE FILLER UNTIL HOLES ARE IN THE PROPER ALIGNMENT. NOTE THAT SOME OF THE HOLES IN THE TONGUE FILLERS WILL NOT BE USED. TOOL EXCESS SEALANT. SEE DETAIL 1.

INSERT THERMAL BREAK ALONG THE FULL LENGTH OF THE VERTICAL MULLION TONGUE AND BUTT TO THE TONGUE FILLER. SEE DETAIL 1. TRIM FLUSH AT TOP AND BOTTOM OF TONGUE FILLER. DO NOT OVERLAP.

JUST PRIOR TO INSTALLING PRESSURE PLATES, PULL BACK THERMAL SEPARATOR AT TOP AND BOTTOM OF TONGUE FILLERS AND RUN A BEAD OF SEALANT ACROSS THE TOP AND BOTTOM OF THE TONGUE FILLER TO SEAL TO THERMAL SEPARATORS. SEE DETAIL 2. BE SURE TO FILL THE GAP BETWEEN THE "NOSE" OF THE TONGUE FILLER AND THE GROOVE OF THE TONGUE. DO NOT ALLOW SEALANT TO CURE PRIOR TO INSTALLING PRESSURE PLATES.

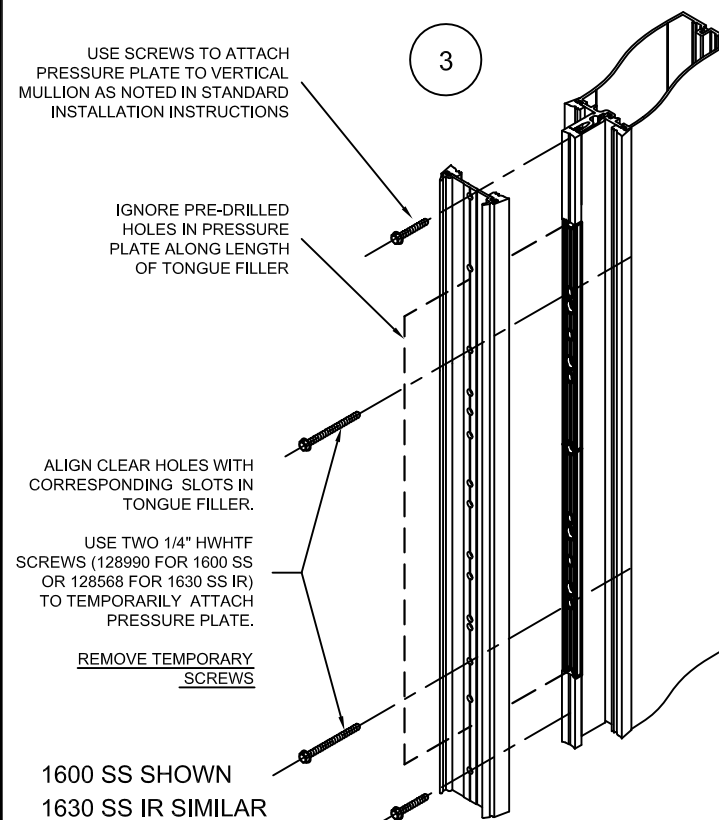


INSTALL EXTERIOR PRESSURE PLATES

PRESSURE PLATES WILL BE PREPPED FOR THE SUNSHADES PRIOR TO SHIPMENT TO THE JOB SITE. THE PREP WILL CONSIST OF SEVEN CLEAR HOLES PER SUNSHADE ATTACHMENT. CLEAR HOLES IN PRESSURE PLATE MUST BE ALIGNED WITH CORRESPONDING HOLES IN TONGUE FILLER AND MULLION. SEE DETAIL 3.

TO ENSURE ALIGNMENT, INSERT TWO 1/4" HWHTF SCREWS THROUGH THE CENTER OF THE CLEAR HOLES IN BOTH THE TOP AND BOTTOM POSITION AS TEMPORARIES (FINGER TIGHTEN).

INSTALL PRESSURE PLATES WITH PRESSURE PLATE SCREWS, FOLLOWING STANDARD 1600 SS OR 1630 SS IR INSTALLATION INSTRUCTIONS. USE ONLY PRE-DRILLED HOLES IN PRESSURE PLATE AND APPLY ONLY THROUGH THERMAL BREAK. **DO NOT SCREW INTO TONGUE FILLER** (494211 OR 494232). REMOVE TEMPORARILY APPLIED SCREWS.



494972 (SHEET 01 OF 08)

CONFIDENTIAL AND PROPRIETARY INFORMATION
KAWNEER COMPANY INC.

THESE DRAWINGS ARE THE SOLE AND EXCLUSIVE PROPERTY OF KAWNEER AND CONTAIN SENSITIVE, PRIVILEGED OR CONFIDENTIAL INFORMATION WHICH MAY BE USED ONLY FOR ITS BENEFIT. THE DISCLOSURE OF THESE DRAWINGS TO UNAUTHORIZED PERSONS IS STRICTLY PROHIBITED. THIS DOCUMENT AND ALL COPIES MUST BE RETURNED UPON DEMAND.
© COPYRIGHT KAWNEER COMPANY, INC., 2011

SUNSHADE ATTACHMENT, TYPICAL INTERMEDIATE

ATTACH ANCHOR CLIPS

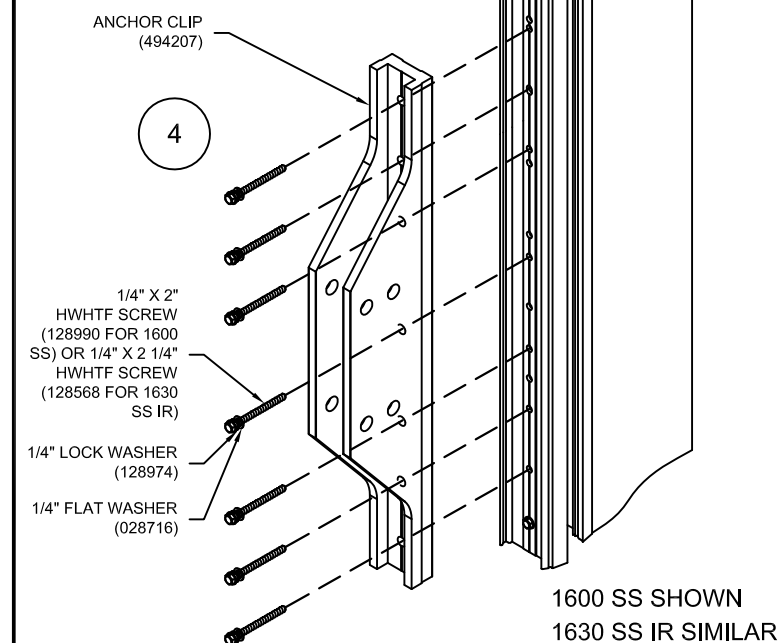
ALIGN THE CLEAR HOLES IN THE ANCHOR CLIP (494207) WITH THE SEVEN CLEAR HOLES IN THE PRESSURE PLATE AND MULLION. ATTACH WITH SEVEN SCREWS (128990 FOR 1600 SS OR 128568 FOR 1630 SS IR), LOCK WASHERS (128974) AND FLAT WASHERS (028716). SEE DETAIL 4.

THE THREAD FORMING ACTION OF THE HWHTF SCREWS WILL CAUSE ADDITIONAL RESISTANCE AND REQUIRE EXTRA FORCE TO SEAT. APPLY A WAX LUBRICANT TO THE THREADS BEFORE PROCEEDING.

NOTE: DO NOT INCREASE HOLE SIZE TO FACILITATE INSTALLATION.

TIGHTEN BOLTS TO A "SNUG" CONDITION AND COMPLETELY COMPRESS THE SPRING TYPE LOCK WASHERS. THEN TIGHTEN APPROXIMATELY 1/2 TURN MORE.

ATTACH ALL ANCHOR CLIPS BEFORE PROCEEDING TO NEXT STEP.



VERSOLEIL OUTRIGGER
SUNSHADE
1600 SS AND 1630 SS IR
INSTALLATION INSTRUCTIONS

95494-037
07/19/13

494972 (SHEET 01 OF 08)

CONFIDENTIAL AND PROPRIETARY INFORMATION
KAWNEER COMPANY INC.

THESE DRAWINGS ARE THE SOLE AND EXCLUSIVE PROPERTY OF KAWNEER AND CONTAIN SENSITIVE, PRIVILEGED OR CONFIDENTIAL INFORMATION WHICH MAY BE USED ONLY FOR ITS BENEFIT. THE DISCLOSURE OF THESE DRAWINGS TO UNAUTHORIZED PERSONS IS STRICTLY PROHIBITED. THIS DOCUMENT AND ALL COPIES MUST BE RETURNED UPON DEMAND.
© COPYRIGHT KAWNEER COMPANY, INC., 2011

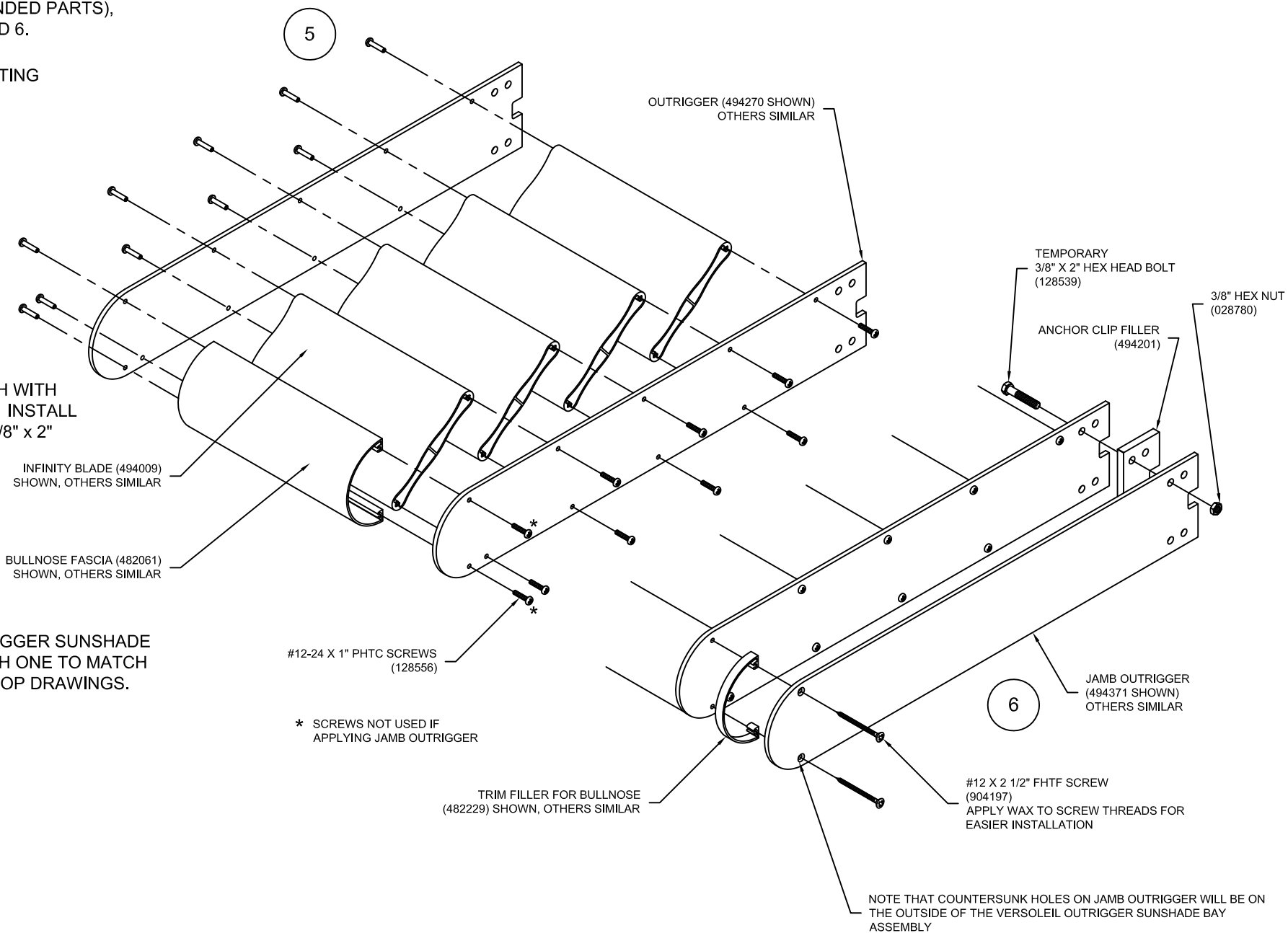
ASSEMBLING THE SUNSHADES

VERSOLEIL OUTRIGGER SUNSHADE BAY ASSEMBLIES USE SCREW SPLINE JOINERY. LAYOUT LEFT AND RIGHT OUTRIGGERS (JAMBS AT INSIDE CORNERS, AND AT SINGLE MULLION 90° OUTSIDE CORNERS ARE HANDED PARTS), BLADES, AND FASCIA. SEE DETAILS 5, AND 6.

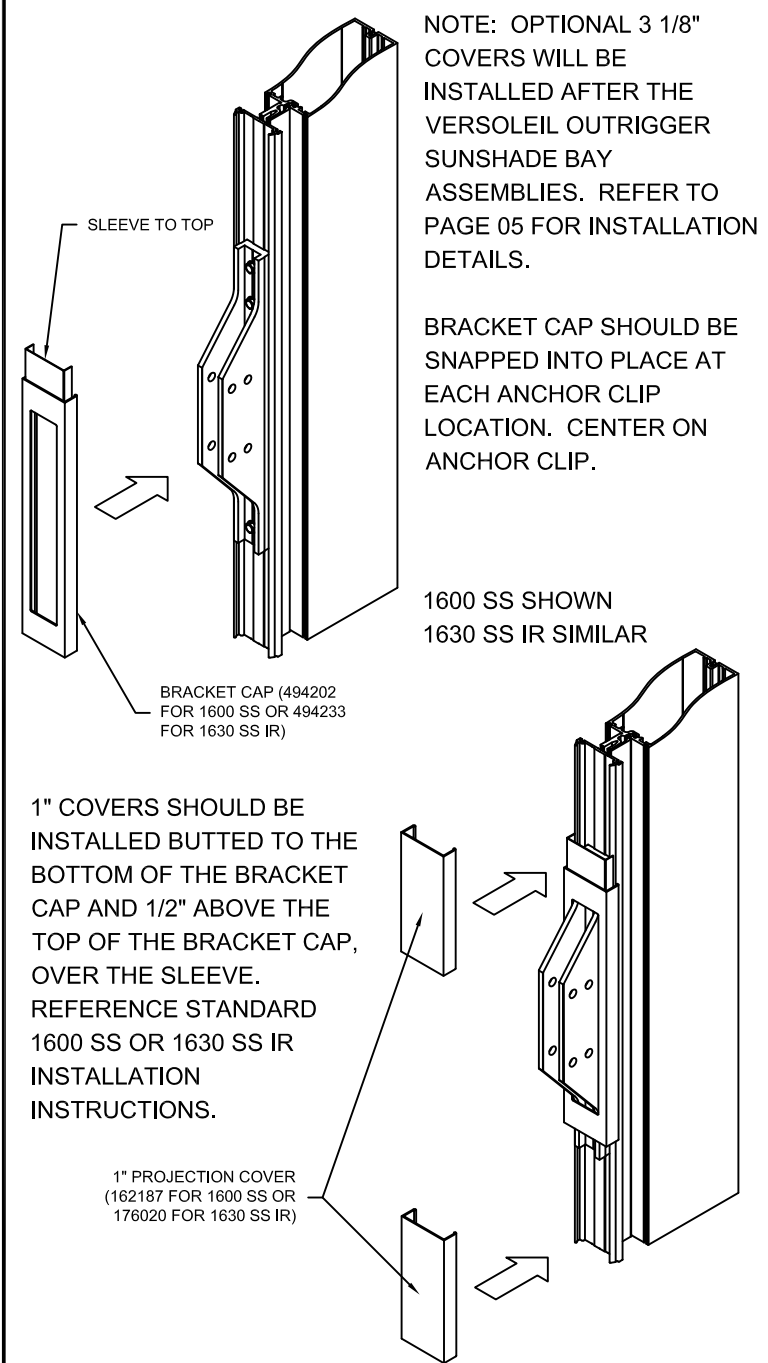
USING #12-24 x 1" PAN HEAD THREAD CUTTING SCREWS (128556), JOIN BLADES AND FASCIA COMPONENTS TO ONE OUTRIGGER. DO NOT TIGHTEN. ALIGN THE OPPOSITE OUTRIGGER AND CONNECT PARTS SIMILARLY. TIGHTEN BOTH SIDES.

NOTE: END ASSEMBLY REQUIRES A JAMB OUTRIGGER TO BE ATTACHED BEFORE INSTALLATION. USING #12 x 2 1/2" FLAT HEAD THREAD FORMING SCREWS (904197) AND APPROPRIATE TRIM FILLER, JOIN JAMB OUTRIGGER TO BAY ASSEMBLY. TIGHTEN UNTIL FULLY SEATED AND FLUSH WITH THE SURFACE OF THE JAMB OUTRIGGER. INSTALL ANCHOR CLIP FILLER (494201) USING (1) 3/8" x 2" HEX HEAD BOLT (128539) AND TEMPORARILY ATTACH (1) 3/8" HEX NUT (028780) TO SECURE JAMB OUTRIGGER DURING INSTALLATION. SEE DETAIL 6. CHECK SHOP DRAWINGS TO DETERMINE SPECIFIC JAMB CONDITION BEFORE PROCEEDING.

ASSEMBLE ALL OF THE VERSOLEIL OUTRIGGER SUNSHADE BAY ASSEMBLIES AND MARK OR TAG EACH ONE TO MATCH CORRESPONDING UNIT AS SHOWN ON SHOP DRAWINGS.



INSTALL 1" COVERS AT INTERMEDIATE MULLION LOCATIONS

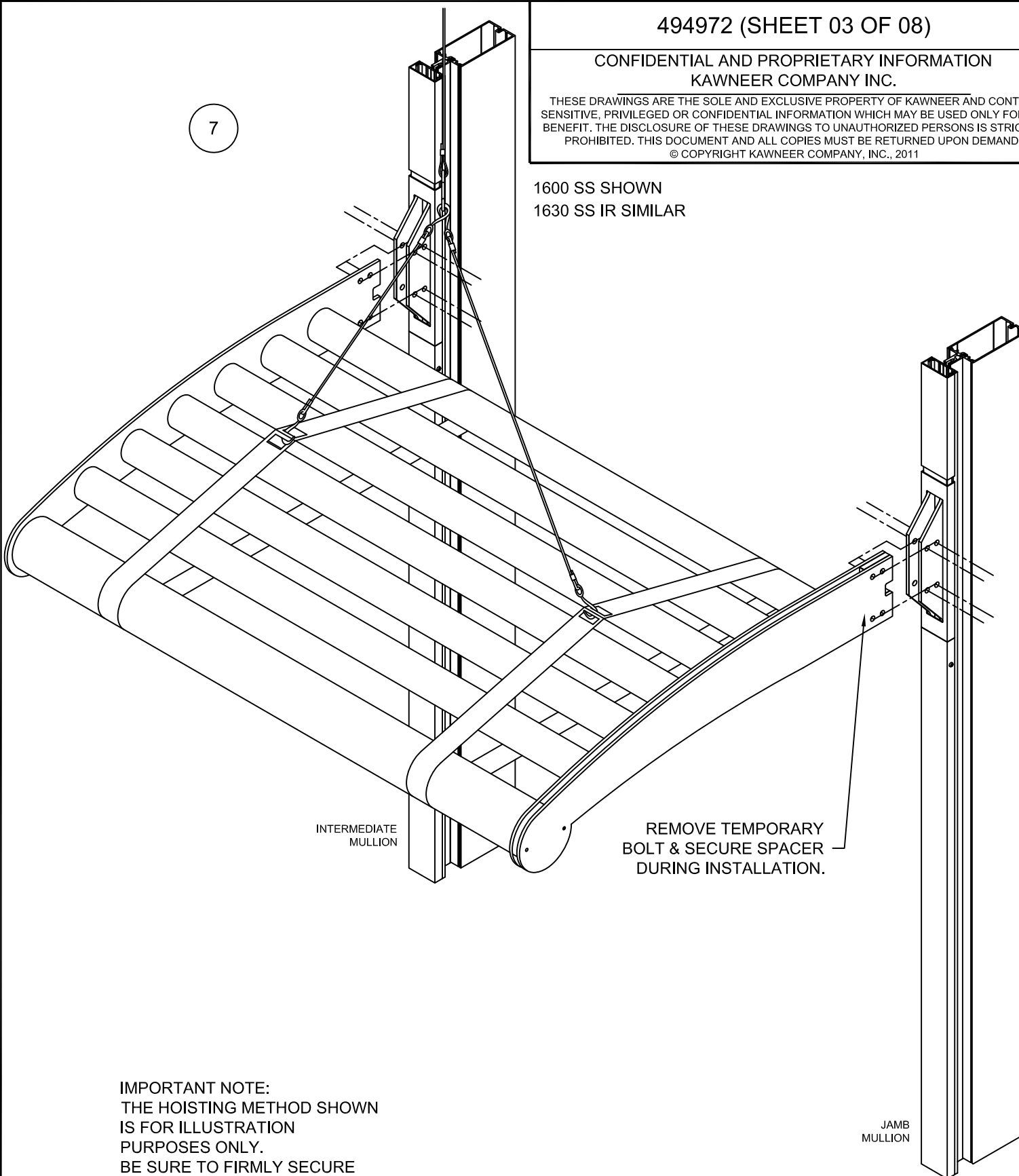


KAWNEER VERSOLEIL OUTRIGGER SUNSHADE
1600 SS AND 1630 SS IR
INSTALLATION INSTRUCTIONS

CONFIDENTIAL AND PROPRIETARY INFORMATION
KAWNEER COMPANY INC.

THESE DRAWINGS ARE THE SOLE AND EXCLUSIVE PROPERTY OF KAWNEER AND CONTAIN SENSITIVE, PRIVILEGED OR CONFIDENTIAL INFORMATION WHICH MAY BE USED ONLY FOR ITS BENEFIT. THE DISCLOSURE OF THESE DRAWINGS TO UNAUTHORIZED PERSONS IS STRICTLY PROHIBITED. THIS DOCUMENT AND ALL COPIES MUST BE RETURNED UPON DEMAND.
© COPYRIGHT KAWNEER COMPANY, INC., 2011

1600 SS SHOWN
1630 SS IR SIMILAR



IMPORTANT NOTE:
THE HOISTING METHOD SHOWN IS FOR ILLUSTRATION PURPOSES ONLY. BE SURE TO FIRMLY SECURE THE SUNSHADE SO THAT IT CANNOT TILT, SLIDE OR SLIP FROM HOISTING STRAPS AND CHECK SAFETY GUIDELINES OF HOISTING EQUIPMENT BEFORE PROCEEDING.

INSTALLING THE SUNSHADES

ARRANGE THE SUNSHADE BAY ASSEMBLIES ON THE CONSTRUCTION SITE ACCORDING TO THEIR CORRESPONDING POSITION ON THE BUILDING. CHECK AGAINST SHOP DRAWINGS.

INSTALLATION CAN TAKE PLACE LEFT TO RIGHT OR RIGHT TO LEFT AS WELL AS TOP TO BOTTOM OR BOTTOM TO TOP (IN MULTIPLE STORY INSTALLATIONS). DEPENDING ON HOISTING METHOD, DETERMINE THE ORDER MOST APPROPRIATE FOR YOUR INSTALLATION. THE FOLLOWING INSTRUCTIONS WILL DEMONSTRATE A ONE-STORY INSTALLATION, RIGHT TO LEFT.

A. INSTALL FIRST BAY ASSEMBLY

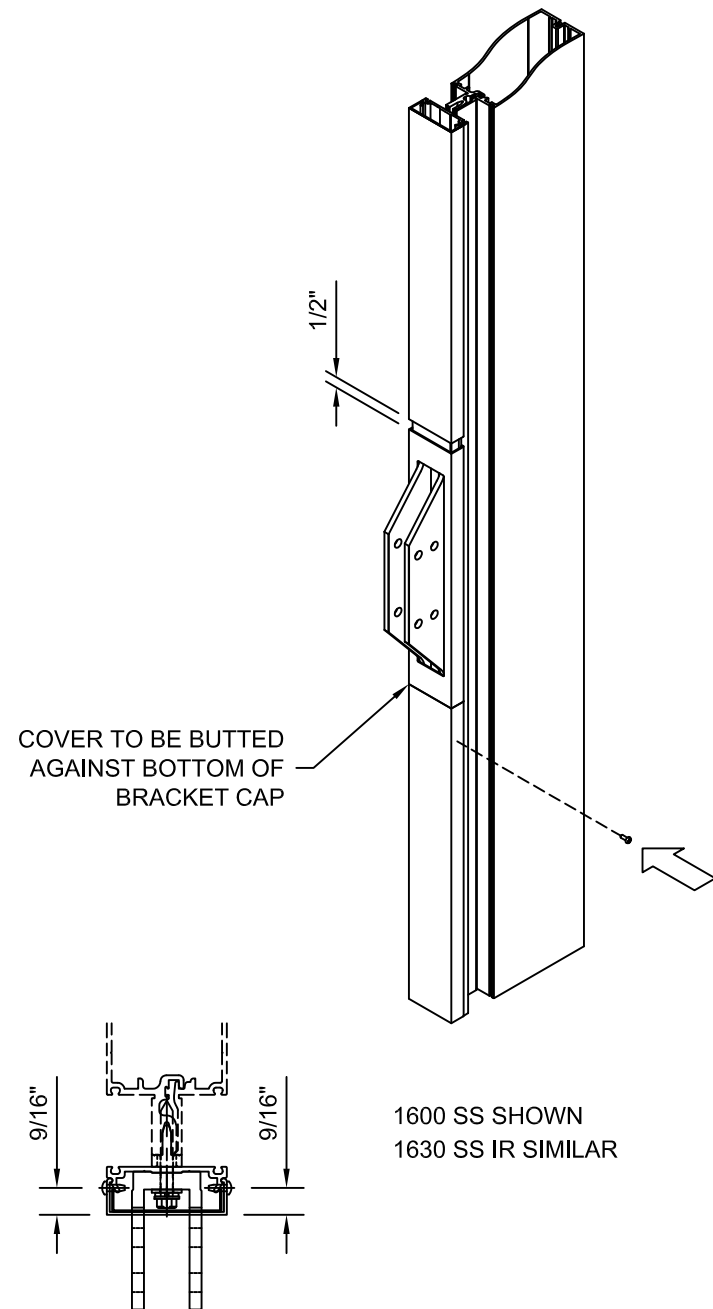
HOIST AND POSITION THE FIRST SUNSHADE BAY ASSEMBLY UNTIL THE FOUR CLEAR HOLES ON BOTH OUTRIGGERS ALIGN WITH THE CORRESPONDING HOLES IN THE ANCHOR CLIPS. THE OUTRIGGERS SHOULD BE POSITIONED ON THE INSIDE OF THE ANCHOR CLIP. SEE DETAILS 7 AND 8. END ASSEMBLY WILL REQUIRE TEMPORARY FASTENER AT ANCHOR CLIP FILLER TO BE REMOVED JUST PRIOR TO ANCHORING. HOLD SPACER IN PLACE TO PREVENT IT FROM FALLING OUT OF POSITION.

NOTE:

VERSOLEIL OUTRIGGER SUNSHADE BAYS TO BE INSTALLED AFTER 1" COVERS.

VERSOLEIL OUTRIGGER SUNSHADE BAYS TO BE INSTALLED BEFORE OPTIONAL 3 1/8" COVERS. SEE PAGE 05 FOR OPTIONAL 3 1/8" COVER INSTALLATION.

PIN VERTICAL COVER 2" BELOW BUTT JOINT WITH BRACKET CAP. DRILL A Ø.106 (#36 DRILL) HOLE THROUGH COVER AND PRESSURE PLATE LEG AND FASTEN WITH A #6 X 3/8" PHTF "B" FASTENER (128920).



1600 SS SHOWN
1630 SS IR SIMILAR

WHEN VERSOLEIL OUTRIGGER SUNSHADES ARE INSTALLED ON THE FOLLOWING CORNER APPLICATIONS, COVER INSTALLATION IS THE SAME AS FOR INTERMEDIATE MULLION LOCATIONS:

- DOUBLE MULLION 90° OUTSIDE CORNER
- DOUBLE MULLION 90° INSIDE CORNER
- DOUBLE MULLION 135° OUTSIDE CORNER
- DOUBLE MULLION 135° INSIDE CORNER

KAWNEER VERSOLEIL OUTRIGGER SUNSHADE
1600 SS AND 1630 SS IR
INSTALLATION INSTRUCTIONS

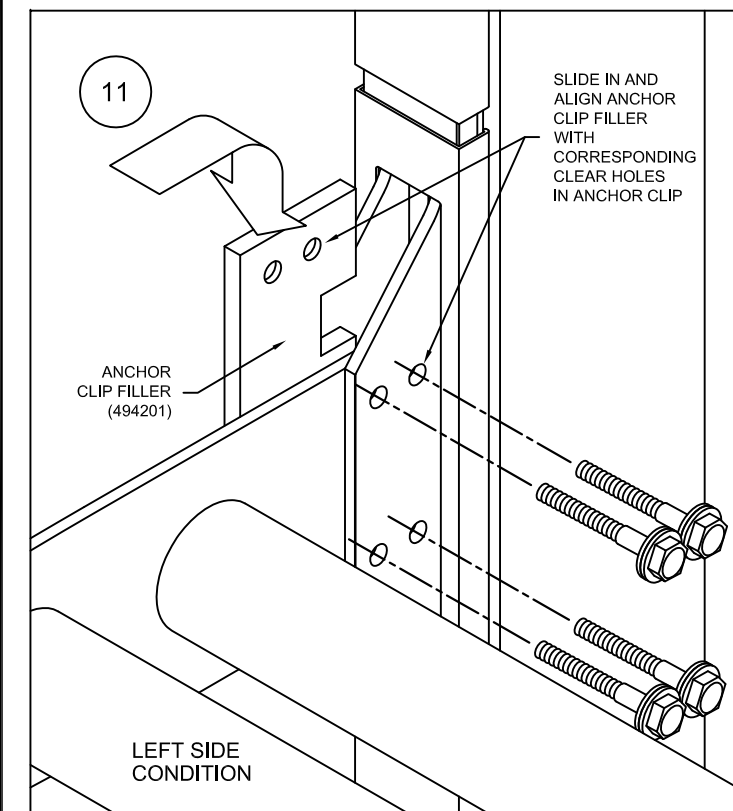
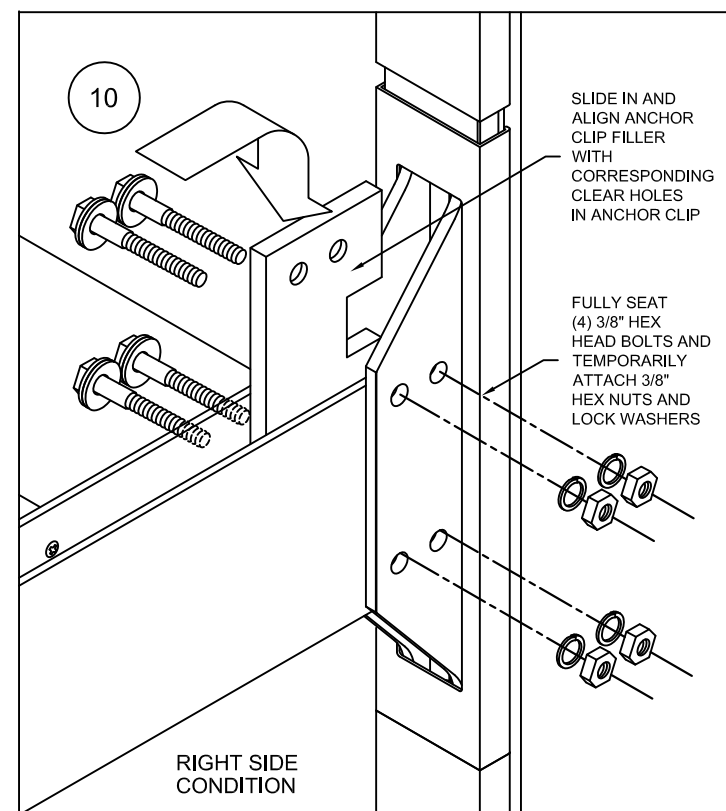
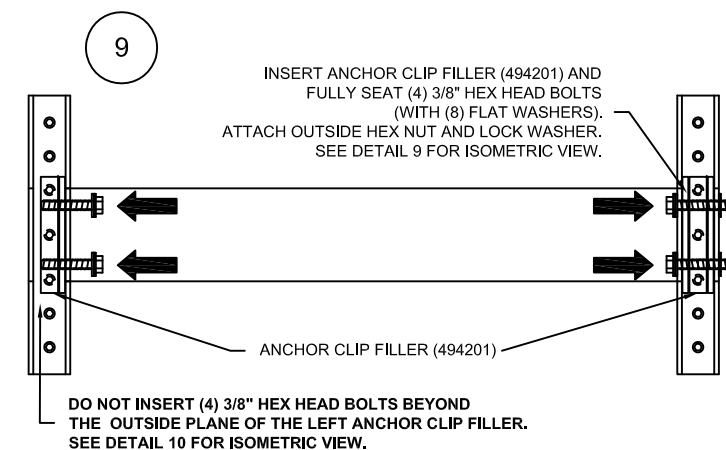
THESE DRAWINGS ARE THE SOLE AND EXCLUSIVE PROPERTY OF KAWNEER AND CONTAIN SENSITIVE, PRIVILEGED OR CONFIDENTIAL INFORMATION WHICH MAY BE USED ONLY FOR ITS BENEFIT. THE DISCLOSURE OF THESE DRAWINGS TO UNAUTHORIZED PERSONS IS STRICTLY PROHIBITED. THIS DOCUMENT AND ALL COPIES MUST BE RETURNED UPON DEMAND.
© COPYRIGHT KAWNEER COMPANY, INC., 2011

SLIDE (2) 3/8" FLAT WASHERS (028596) PER BOLT ONTO THE 3/8" x 2" HEX HEAD BOLTS (128539) (NOTE: (2) WASHERS ARE REQUIRED TO CENTER BOLT ON MULLION). ON THE RIGHT SIDE (END ASSEMBLY), REMOVE THE TEMPORARY FASTENER AT ANCHOR CLIP FILLER (494201) AND ALIGN THE FILLER AND OUTRIGGER WITH THE ANCHOR CLIP. COMPLETELY SEAT THE RIGHT SET OF BOLTS AND FLAT WASHERS UNTIL THE FLAT WASHERS CONTACT THE SURFACE OF THE ANCHOR CLIP. ATTACH (4) LOCK WASHERS (028779) AND (4) 3/8" HEX NUTS (028780) TO THE RIGHT SET OF BOLTS. FINGER TIGHTEN. SEE DETAIL 10.

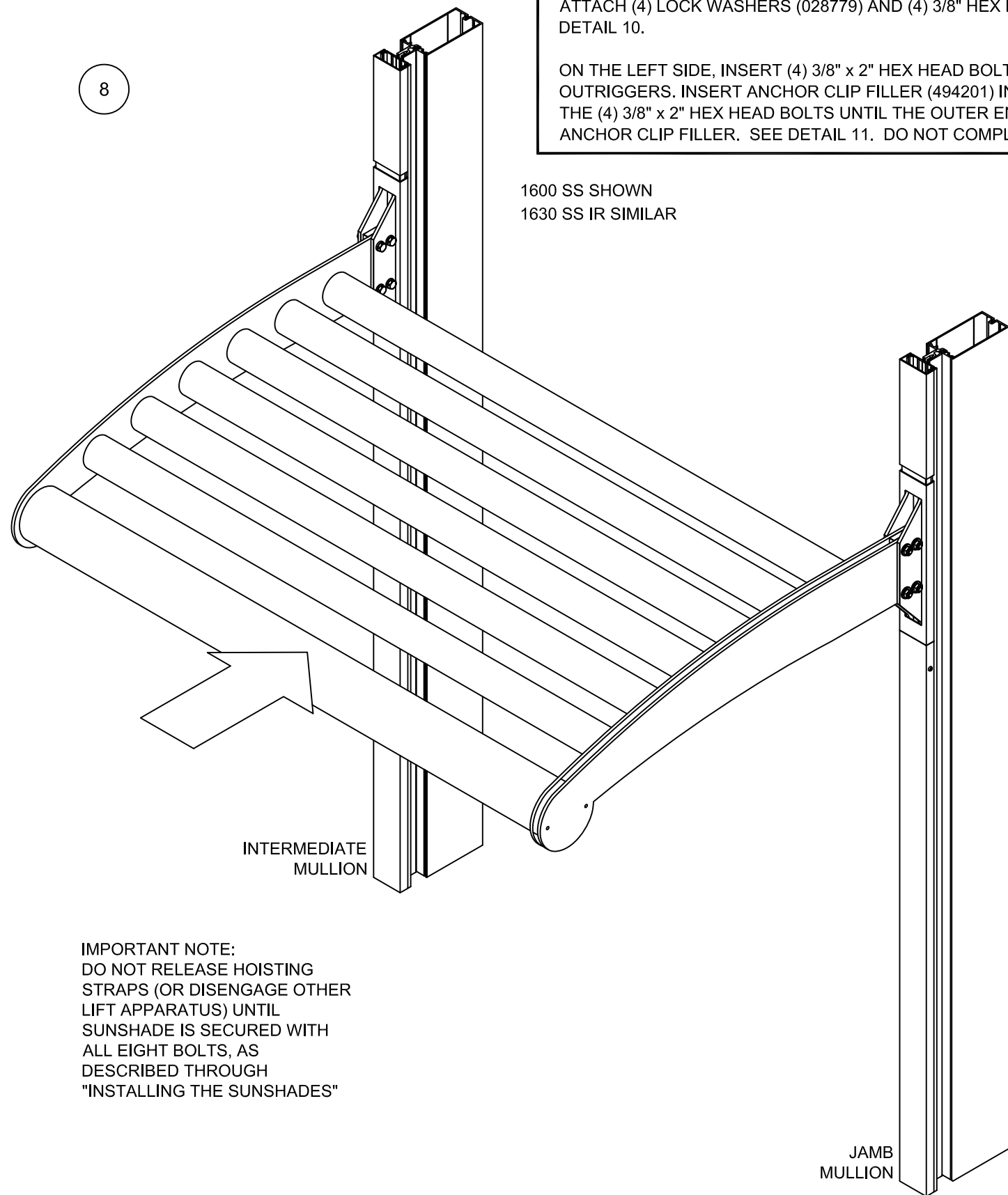
ON THE LEFT SIDE, INSERT (4) 3/8" x 2" HEX HEAD BOLTS WITH (8) WASHERS INTO ANCHOR CLIP AND THROUGH THE OUTRIGGERS. INSERT ANCHOR CLIP FILLER (494201) INTO THE CENTER OF THE ANCHOR CLIP AND CONTINUE INSERTING THE (4) 3/8" x 2" HEX HEAD BOLTS UNTIL THE OUTER ENDS OF THE BOLTS ARE FLUSH WITH THE OUTSIDE SURFACE OF THE ANCHOR CLIP FILLER. SEE DETAIL 11. DO NOT COMPLETELY SEAT AND DO NOT ATTACH THE SECOND SET OF HEX NUTS.

1600 SS SHOWN
1630 SS IR SIMILAR

TIGHTEN NUTS AT RIGHT SIDE. (DO NOT OVER TIGHTEN BOLTS. TIGHTEN TO A SNUG POSITION ENSURING THE SPRING TYPE LOCK WASHERS ARE COMPRESSED. THEN TIGHTEN APPROXIMATELY 1/2 TURN MORE).



8



IMPORTANT NOTE:
DO NOT RELEASE HOISTING STRAPS (OR DISENGAGE OTHER LIFT APPARATUS) UNTIL SUNSHADE IS SECURED WITH ALL EIGHT BOLTS, AS DESCRIBED THROUGH "INSTALLING THE SUNSHADES"



VERSOLEIL OUTRIGGER
SUNSHADE
1600 SS AND 1630 SS IR
INSTALLATION INSTRUCTIONS

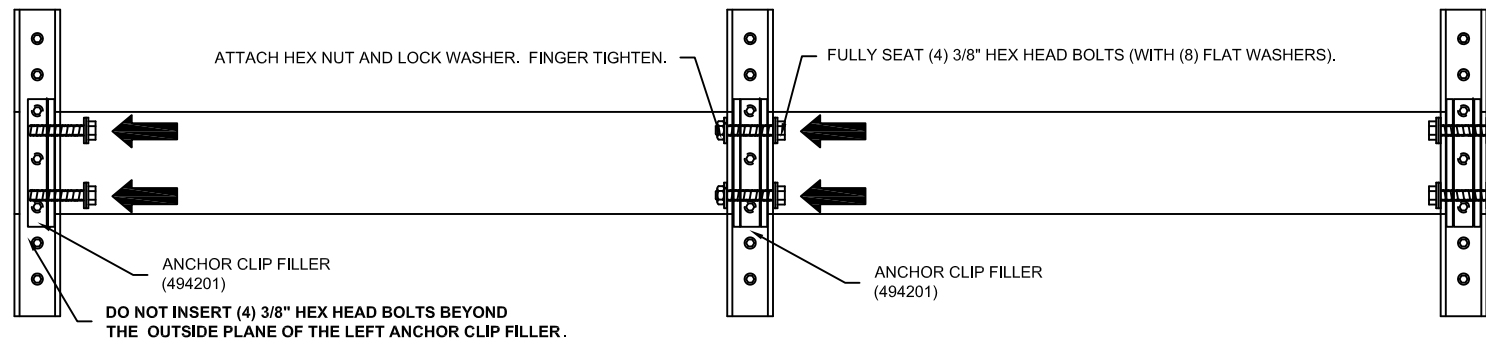
B. INSTALL SECOND BAY ASSEMBLY

NOTE: THE FOLLOWING INSTRUCTIONS APPLY TO THE BALANCE OF ALL INTERMEDIATE BAY ASSEMBLY INSTALLATIONS.

HOIST AND POSITION SUNSHADE BAY ASSEMBLY UNTIL THE (4) CLEAR HOLES OF THE OUTRIGGERS ALIGN WITH THE CORRESPONDING HOLES IN THE ANCHOR CLIPS. THE RIGHT SIDE SHOULD BE RELATIVELY TIGHT SINCE THE ANCHOR CLIP SPACER IS ALREADY IN POSITION. ON THE RIGHT SIDE, COMPLETELY SEAT THE (4) 3/8" HEX HEAD BOLTS AND (8) FLAT WASHERS (THROUGH THE OUTRIGGER AND ANCHOR CLIP). APPLY (4) LOCK WASHERS (028779) AND (4) HEX NUTS (028780) AND FINGER TIGHTEN. SEE BELOW.

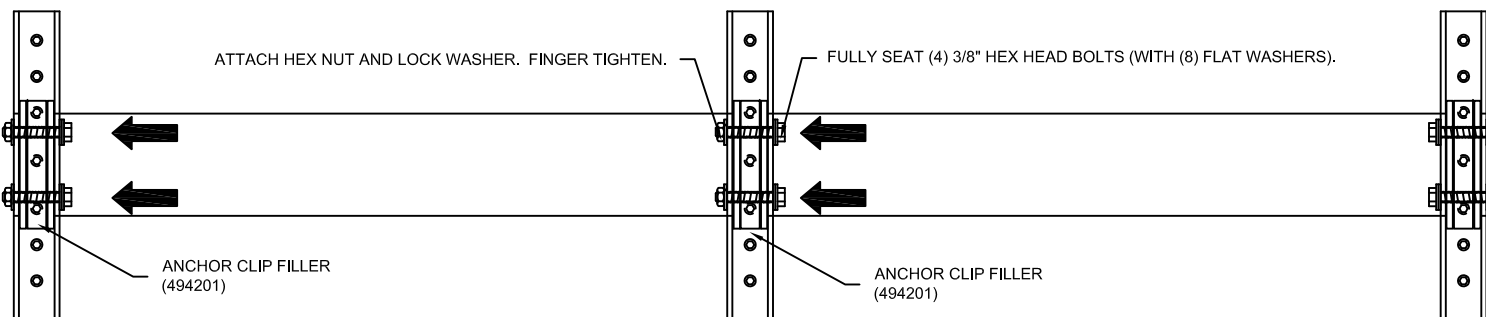
ON THE LEFT SIDE, ALIGN AND INSERT AN ANCHOR CLIP FILLER (494201) INTO THE CENTER OF THE ANCHOR CLIP AND PARTIALLY SEAT ANOTHER SET OF (4) 3/8" x 2" HEX HEAD BOLTS AND (8) FLAT WASHERS. RUN BOLTS THROUGH ASSEMBLY UNTIL THE OUTER ENDS OF THE BOLTS ARE FLUSH WITH THE OUTSIDE SURFACE OF THE ANCHOR CLIP FILLER. DO NOT COMPLETELY SEAT AND DO NOT ATTACH THE SECOND SET OF HEX HEAD NUTS. SEE DETAIL BELOW.

AT RIGHT SIDE, MAKE MINOR ADJUSTMENTS HORIZONTALLY TO ALIGN ALL THE SUNSHADES WHILE TIGHTENING BOLTS AT THE ANCHOR CLIPS. (DO NOT OVER TIGHTEN BOLTS. TIGHTEN TO A SNUG POSITION ENSURING THE SPRING TYPE LOCK WASHERS ARE COMPRESSED. THEN TIGHTEN APPROXIMATELY 1/2 TURN MORE).



C. INSTALL FINAL BAY ASSEMBLY

ON THE FINAL BAY INSTALLATION (END ASSEMBLY), REMOVE THE TEMPORARY FASTENER AT ANCHOR CLIP FILLER (494201) AND ALIGN THE FILLER WITH THE ANCHOR CLIP AND COMPLETELY SEAT THE SET OF BOLTS AND FLAT WASHERS UNTIL THE FLAT WASHERS CONTACT THE SURFACE OF THE ANCHOR CLIP. APPLY (4) LOCK WASHERS (028779) AND (4) HEX NUTS (028780) AND FINGER TIGHTEN. SEE DETAIL BELOW.



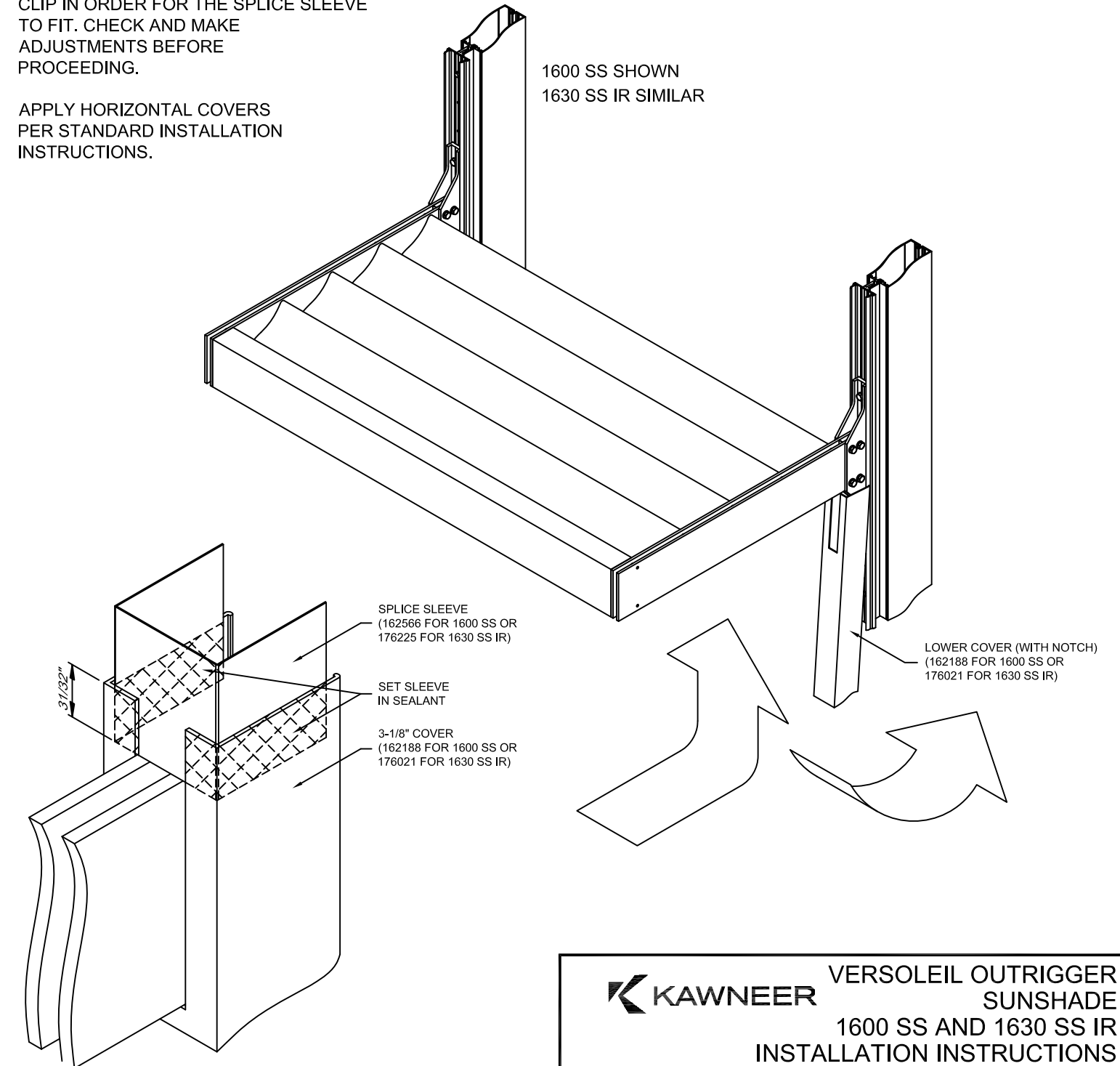
MAKE MINOR ADJUSTMENTS HORIZONTALLY TO ALIGN ALL THE SUNSHADES WHILE TIGHTENING BOLTS AT THE ANCHOR CLIPS. (DO NOT OVER TIGHTEN BOLTS. TIGHTEN TO A SNUG POSITION ENSURING THE SPRING TYPE LOCK WASHERS ARE COMPRESSED. THEN TIGHTEN APPROXIMATELY 1/2 TURN MORE).

INSTALLING OPTIONAL 3 1/8" COVERS AT INTERMEDIATE MULLION LOCATIONS

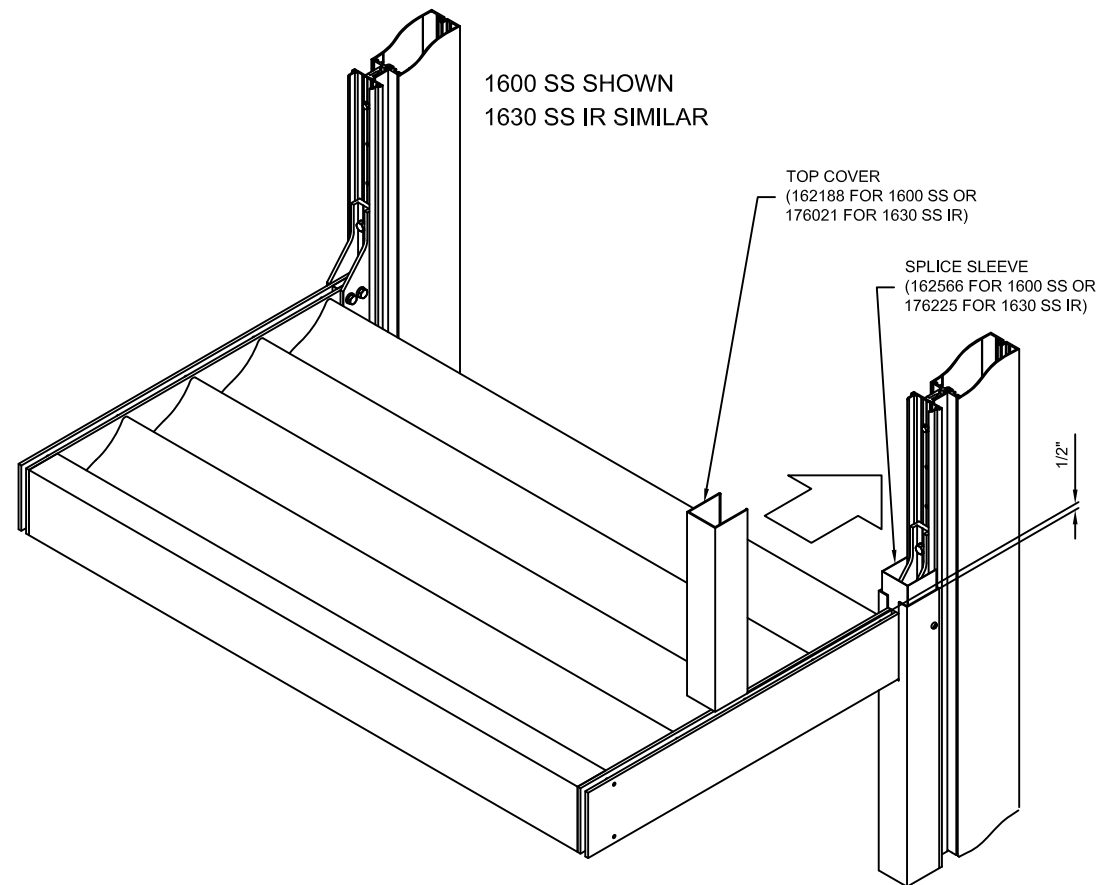
INSTALL THE COVERS FROM THE BOTTOM OF THE ELEVATION UP. ALIGN THE LOWER COVER ON THE MULLION WITH THE 1.013" X 6" NOTCH AT THE TOP AND ENGAGE COVER. THE SPLICE SLEEVE MUST BE SET INTO SEALANT AT THE TOP OF THE LOWER COVER ABOVE THE SUNSHADE, AFTER THE LOWER COVER HAS BEEN ENGAGED.

NOTE: THE 3/8" HEX HEAD BOLTS AND CORRESPONDING NUTS MUST BE CENTERED ON THE ANCHOR CLIP IN ORDER FOR THE SPLICE SLEEVE TO FIT. CHECK AND MAKE ADJUSTMENTS BEFORE PROCEEDING.

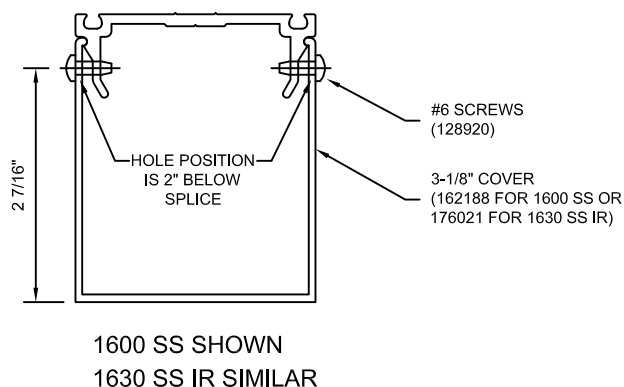
APPLY HORIZONTAL COVERS PER STANDARD INSTALLATION INSTRUCTIONS.



ALIGN THE UPPER COVER WITH THE MULLION, ABOVE THE OUTRIGGERS, AND SPLICE SLEEVE ON THE LOWER COVER, LEAVING A 1/2" EXPANSION GAP BETWEEN THE UPPER AND LOWER COVERS. ENGAGE MEMBERS PER STANDARD INSTALLATION INSTRUCTIONS.



AT ALL VERTICAL COVER LOCATIONS, PIN BOTH HALVES OF THE VERTICAL COVERS. DRILL A Ø0.106" HOLE (#36 DRILL) 2" BELOW THE SPLICE AND 2 7/16" FROM THE OUTSIDE SURFACE OF THE COVER. INSTALL #6 x 3/8" PAN HEAD SCREWS (128920).



SUNSHADE ATTACHMENT - CORNERS

ASSEMBLING THE CORNER SUNSHADES

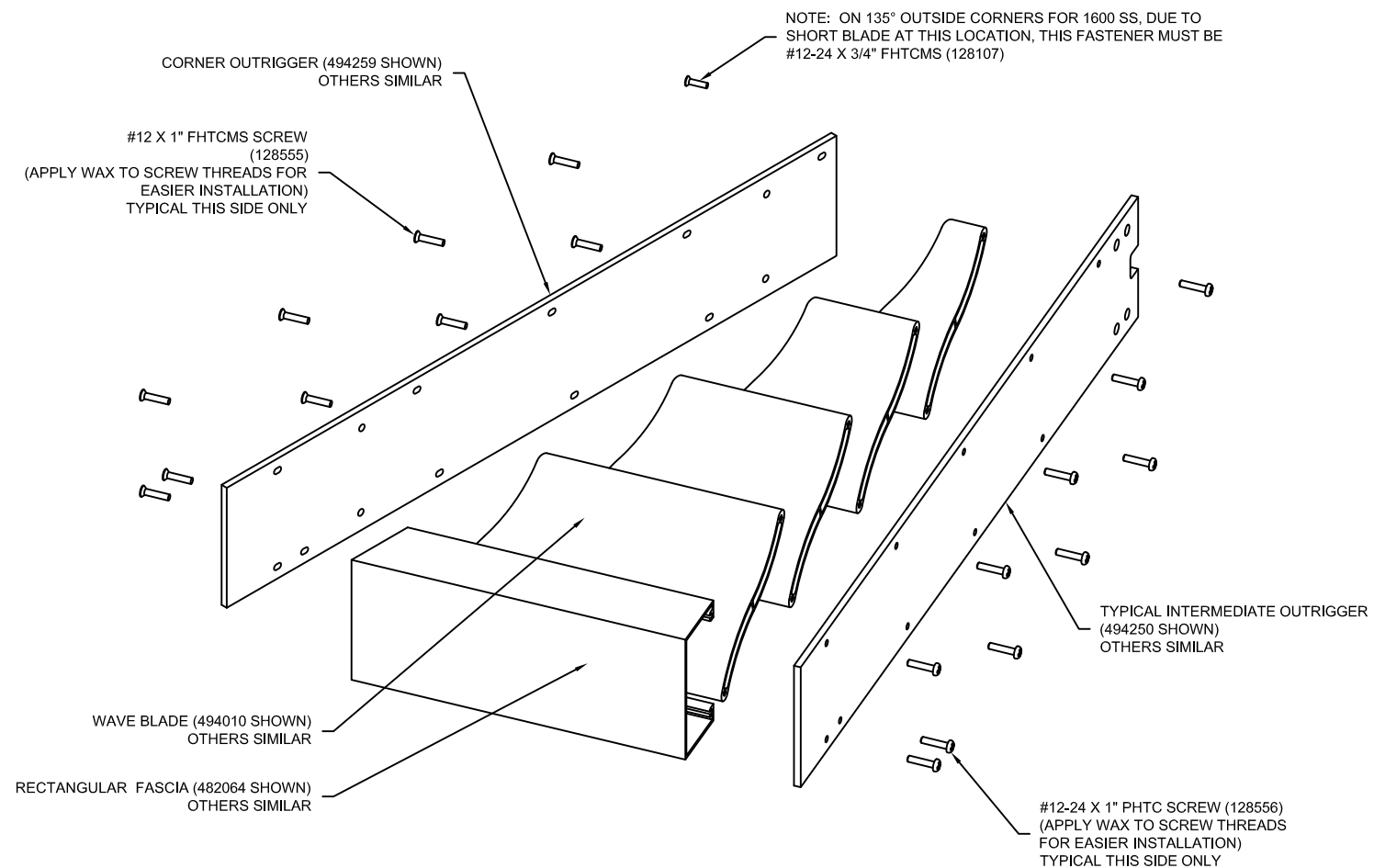
VERSOLEIL OUTRIGGER SUNSHADE BAY ASSEMBLIES USE SCREW SPLINE JOINERY. LAYOUT LEFT AND RIGHT OUTRIGGERS (AT INSIDE CORNERS, AND SINGLE MULLION 90° OUTSIDE CORNERS ARE HANDED PARTS), BLADES, AND FASCIA PER SHOP DRAWINGS. SEE BELOW.

USING #12-24 X 1" FLAT HEAD THREAD CUTTING SCREWS (128555), JOIN BLADES AND FASCIA TO CORNER OUTRIGGER - DO NOT TIGHTEN COMPLETELY. USING #12-24 X 1" PAN HEAD THREAD CUTTING SCREWS (128556), JOIN BLADES AND FASCIA COMPONENTS TO TYPICAL INTERMEDIATE OUTRIGGER. TIGHTEN SCREWS ON BOTH SIDES.

NOTE: WHEN ASSEMBLING 135° OUTSIDE CORNER FOR 1600 SS, THE USE OF A #12-24 X 3/4" FHTCMS (128107) FASTENER IS REQUIRED AT THE INNER-MOST BLADE DUE TO THE LENGTH OF THE BLADE AT THIS LOCATION. SEE BELOW.

ASSEMBLE ALL OF THE VERSOLEIL OUTRIGGER SUNSHADE BAY ASSEMBLIES AND MARK OR TAG EACH ONE TO MATCH CORRESPONDING UNIT AS SHOWN ON SHOP DRAWINGS.

REFERENCE VERSOLEIL / 1600 SYSTEM 1 INSTRUCTIONS 494970 AND APPROVED SHOP DRAWINGS FOR ADDITIONAL INFORMATION FOR ASSEMBLY / INSTALLATION OF SINGLE MULLION CORNER SUNSHADE.



494972 (SHEET 06 OF 08)

CONFIDENTIAL AND PROPRIETARY INFORMATION
KAWNEER COMPANY INC.

THESE DRAWINGS ARE THE SOLE AND EXCLUSIVE PROPERTY OF KAWNEER AND CONTAIN SENSITIVE, PRIVILEGED OR CONFIDENTIAL INFORMATION WHICH MAY BE USED ONLY FOR ITS BENEFIT. THE DISCLOSURE OF THESE DRAWINGS TO UNAUTHORIZED PERSONS IS STRICTLY PROHIBITED. THIS DOCUMENT AND ALL COPIES MUST BE RETURNED UPON DEMAND.
© COPYRIGHT KAWNEER COMPANY, INC., 2011

KAWNEER VERSOLEIL OUTRIGGER
SUNSHADE
1600 SS AND 1630 SS IR
INSTALLATION INSTRUCTIONS

95494-037
07/19/13

494972 (SHEET 06 OF 08)

THESE DRAWINGS ARE THE SOLE AND EXCLUSIVE PROPERTY OF KAWNEER AND CONTAIN SENSITIVE, PRIVILEGED OR CONFIDENTIAL INFORMATION WHICH MAY BE USED ONLY FOR ITS BENEFIT. THE DISCLOSURE OF THESE DRAWINGS TO UNAUTHORIZED PERSONS IS STRICTLY PROHIBITED. THIS DOCUMENT AND ALL COPIES MUST BE RETURNED UPON DEMAND.
© COPYRIGHT KAWNEER COMPANY, INC., 2011

**INSTALLING THE SUNSHADE AT 90° & 135°
DOUBLE MULLION OUTSIDE CORNERS**

IF THE SUNSHADE APPLICATION INCLUDES AN OUTSIDE CORNER, CONTINUE TO INSTALL SUNSHADES AS PREVIOUSLY DESCRIBED APPROACHING THE OUTSIDE CORNER CONDITION.

FOR CORNER BRAKE CLOSURE ATTACHMENT, 027972 ANGLES MAY NEED TO BE PRE-APPLIED TO THE PRESSURE PLATE PRIOR TO INSTALLING PRESSURE PLATE IF ACCESS IS TOO TIGHT TO MATCH DRILL PRESSURE PLATE. REFERENCE SHOP DETAILS. MATCH DRILL .154 DIA. [#23 DRILL] HOLES IN PRESSURE PLATE LEG AND APPLY WITH 128407 #10 x 7/16" PH SCREWS.

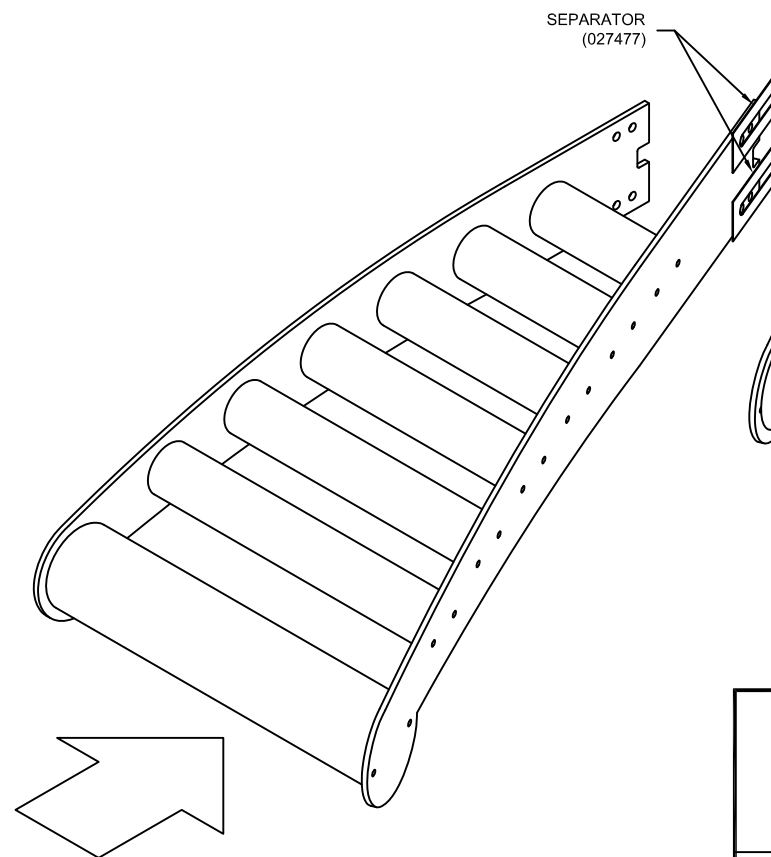
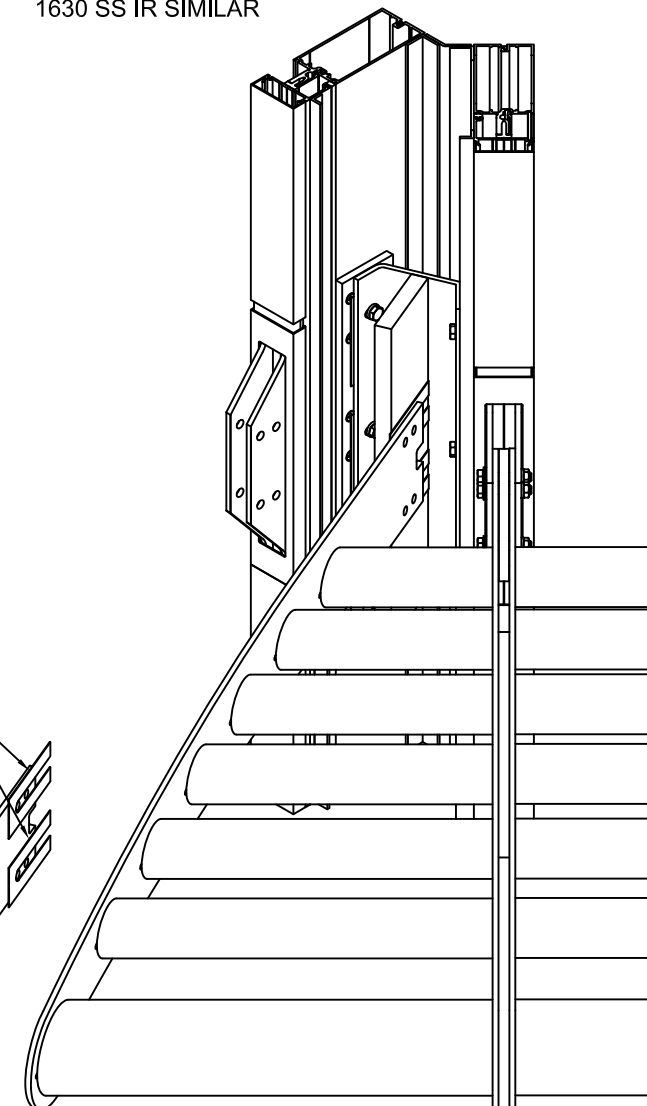
USING PRE-DRILLED MOUNTING HOLES, INSTALL A TAPPING BAR (494204) ON EACH CORNER MULLION USING 1/4"-20 X 3/4" FHMS (128925). INSTALL OUTSIDE CORNER ANCHOR STEM USING 3/8"-16 X 1" BOLT (028969), 3/8" LOCK WASHER (028779) AND SEPARATORS (027477) BETWEEN STEEL ANCHOR STEM AND ALUMINUM TAPPING BARS. TIGHTEN 3/8" BOLTS TO A "SNUG" CONDITION ENSURING SPRING TYPE LOCK WASHERS ARE COMPLETELY COMPRESSED.

****DO NOT EXCEED 100 IN-LBS****

INSTALL ONE SIDE OF CORNER SIMILAR TO "STRAIGHT RUN" OF SUNSHADE. ATTACHING TO ANCHOR CLIP (494207) AND OUTSIDE CORNER ANCHOR STEM USING 3/8" -16 X 2" BOLT (128539), 3/8" FLAT WASHER (028596), 3/8" LOCK WASHER (028-779), 3/8" HEX NUT (028780), AND SEPARATOR (027477) BETWEEN STEEL ANCHOR STEM AND ALUMINUM OUTRIGGER.

INSTALL SECOND SIDE OF CORNER IN THE SAME MANNER AS THE FIRST, ATTACHING TO ANCHOR CLIP (494207) AND OUTSIDE CORNER ANCHOR STEM USING 3/8"-16 X 2" BOLT (128539), 3/8" FLAT WASHER (028596), 3/8" LOCK WASHER (028779), 3/8" HEX NUT (028780), AND SEPARATOR (027477) BETWEEN STEEL ANCHOR STEM AND ALUMINUM OUTRIGGER.

1600 SS SHOWN
1630 SS IR SIMILAR



1600 SS SHOWN
1630 SS IR SIMILAR

ANGLE FOR BRAKE ATTACHMENT (027972)

ANCHOR CLIP (494207)

TAPPING BAR (494204)

SEPARATOR (EACH SIDE OF ANCHOR STEM) (027477)

SEPARATOR (027477)

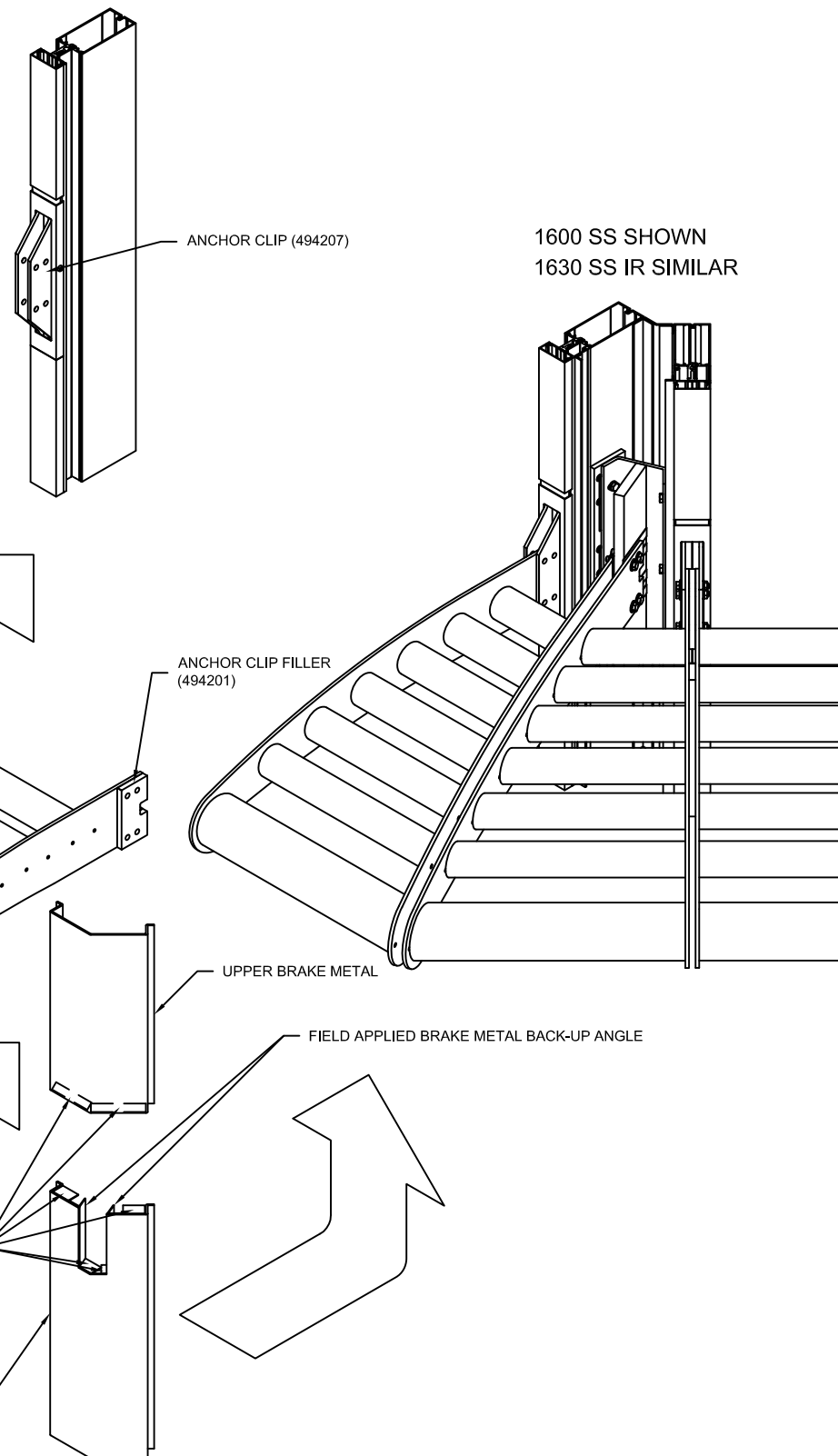
ANCHOR CLIP FILLER (494201)

OUTSIDE CORNER ANCHOR STEM
1600 SS:
(494208 - 90° CORNER OR
494209 - 135° CORNER)
1630 SS IR:
(494236 - 90° CORNER OR
494237 - 135° CORNER)

FIELD BOND ANGLE (027150) AND BRAKE METAL BACK-UP ANGLES TO CORNER BRAKE METAL, AS SHOWN BELOW. LOWER BRAKE METAL MUST BE MANEUVERED INTO POSITION SO THAT NOTCH FITS AROUND CORNER OUTRIGGERS. USING BREAK METAL AS A GUIDE, MATCH DRILL PERIMETER CHANNELS WITH Ø0.159 (#21 DRILL) HOLES AND FASTEN TO PERIMETER CHANNELS USING #10 X 7/16" B PHTF FASTENERS (128407) ON 24" CENTERS. ALLOW A 1/2" EXPANSION SPLICE BETWEEN UPPER AND LOWER BRAKE METAL.

CLEAN AND PRIME (AS REQUIRED) ALL AREAS AROUND SPLICE PER SEALANT MANUFACTURER'S RECOMMENDATIONS. INSERT BACKER ROD AT BRAKE METAL SPLICE INTO ALL GAPS AROUND CORNER OUTRIGGERS AND INTO 1/2" EXPANSION SPLICE AND FILL WITH SEALANT. TOOL SEALANT.

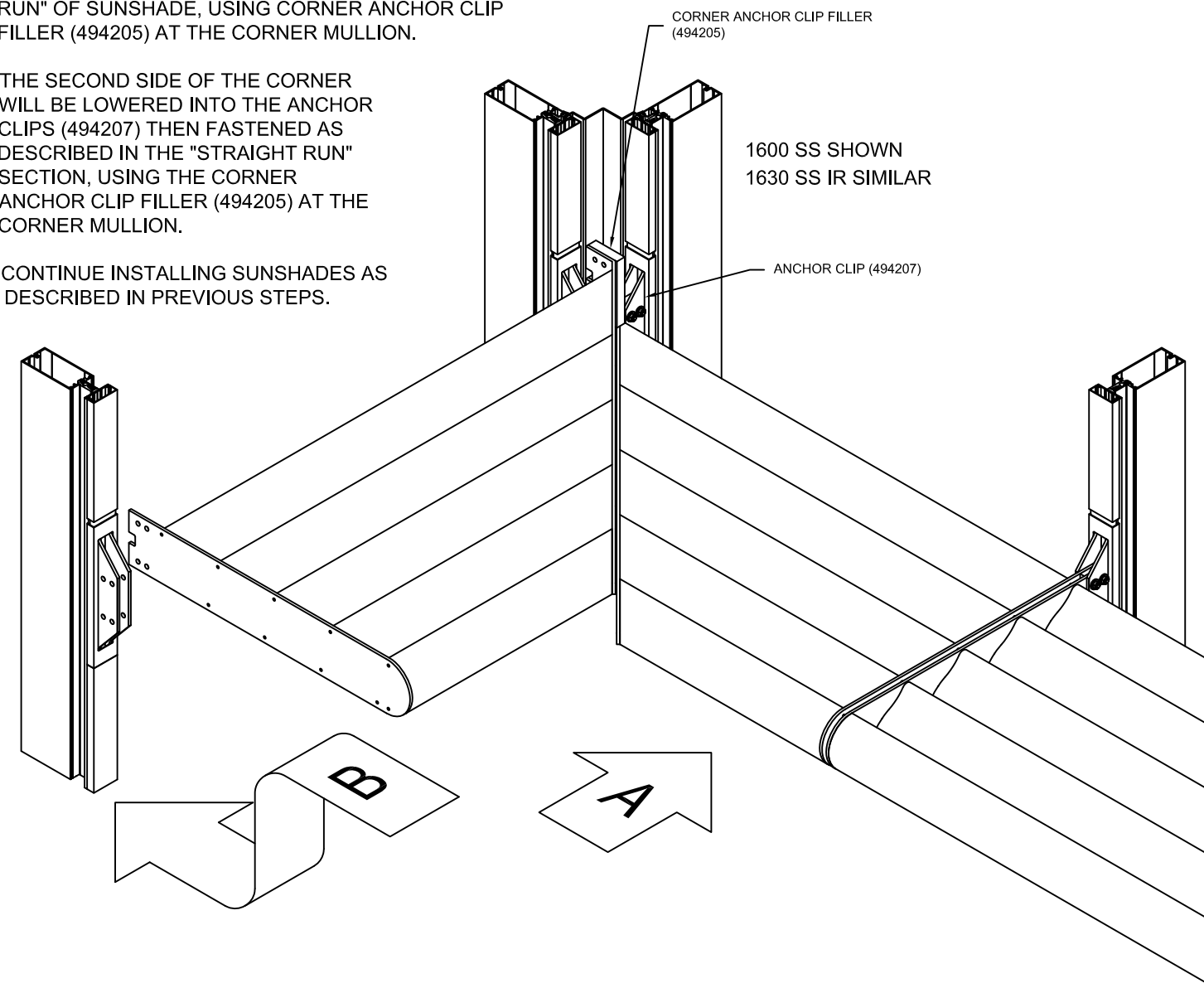
CONTINUE INSTALLING SUNSHADES AS DESCRIBED IN PREVIOUS STEPS.



INSTALLING THE SUNSHADE AT 90° & 135° DOUBLE MULLION INSIDE CORNERS

IF THE SUNSHADE APPLICATION INCLUDES AN INSIDE CORNER, CONTINUE TO INSTALL SUNSHADES AS PREVIOUSLY DESCRIBED APPROACHING THE INSIDE CORNER CONDITION.

- A) INSTALL ONE SIDE OF CORNER SIMILAR TO "STRAIGHT RUN" OF SUNSHADE, USING CORNER ANCHOR CLIP FILLER (494205) AT THE CORNER MULLION.
- B) THE SECOND SIDE OF THE CORNER WILL BE LOWERED INTO THE ANCHOR CLIPS (494207) THEN FASTENED AS DESCRIBED IN THE "STRAIGHT RUN" SECTION, USING THE CORNER ANCHOR CLIP FILLER (494205) AT THE CORNER MULLION.
- C) CONTINUE INSTALLING SUNSHADES AS DESCRIBED IN PREVIOUS STEPS.



INSTALLING OPTIONAL 3 1/8" COVERS ON 90° & 135° DOUBLE MULLION OUTSIDE & INSIDE CORNERS

WHEN DEEP COVERS ARE USED WITH THE VERSOLEIL OUTRIGGER SUNSHADE, THE COVERS WILL BE FACTORY PREPPED AND SHIPPED READY TO INSTALL. DOUBLE MULLION CORNER COVERS WILL BE INSTALLED IN THE SAME MANNER AS FOR INTERMEDIATE MULLIONS.

NOTE: DOUBLE MULLION 90° AND 135° CORNER COVERS WILL HAVE A RH/LH BOTTOM COVER, PLEASE REFER TO APPROVED SHOP DRAWINGS TO DETERMINE PROPER ORIENTATION OF NOTCHES.



VERSOLEIL OUTRIGGER
SUNSHADE
1600 SS AND 1630 SS IR
INSTALLATION INSTRUCTIONS