

**HANDLING, STORING, AND PROTECTION OF ALUMINUM**

The material must be protected against damage. The following precautions are recommended to assure early acceptance of your products and workmanship.

**A. HANDLE CAREFULLY** - Don't drop from the truck. Stack with adequate separation so material will not rub together. Store off the ground. Protect against elements and other construction trades. Wear hand protection to prevent injury due to sharp edges of cut extrusions.

**B. KEEP MATERIAL AWAY FROM WATER, MUD AND SPRAY** - Prevent cement, plaster, or other materials from damaging the finish.

**C. PROTECT THE MATERIALS AFTER ERECTION** - Protect by wrapping with Kraft paper or by erecting Visqueen or canvas splatter screen. Cement, plaster, terrazzo, other alkaline solutions and acid based materials used to clean masonry are very harmful to the finish and should be removed with water and mild soap IMMEDIATELY.

**GENERAL INSTALLATION NOTES**

The following practices are recommended for all installations:

**A. CHECK SHOP DRAWINGS and INSTALLATION INSTRUCTIONS** to become thoroughly familiar with the project. The SHOP DRAWINGS take precedence and include specific details for the project. The INSTALLATION INSTRUCTIONS are of a general nature and cover most common conditions.

**B. All materials are to be INSTALLED PLUMB, LEVEL, AND TRUE.**

**C. Make certain that construction which will receive your materials is in accordance with the contract documents. If not, notify the GENERAL CONTRACTOR IN WRITING and resolve differences before proceeding with your work.**

**D. Isolate all aluminum to be placed directly in contact with uncured masonry or incompatible materials with a heavy coat of zinc chromate or bituminous paint.**

**E. Check all materials on arrival for quantity and be sure you have everything required to begin installation.**

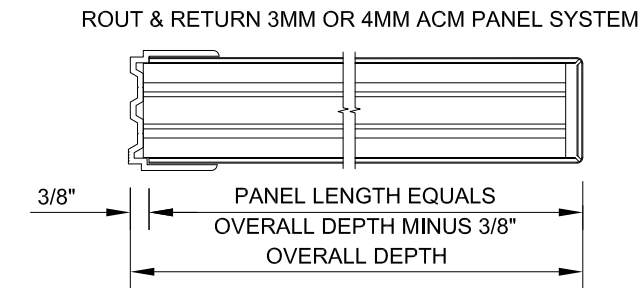
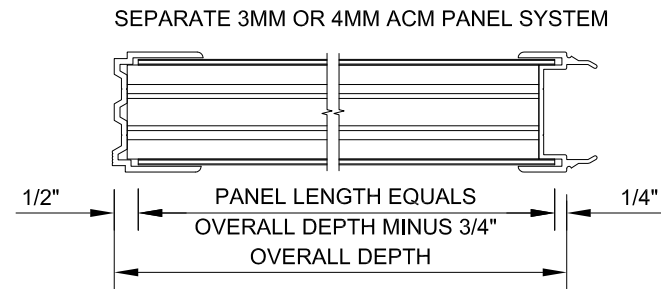
**F. Sealants must be compatible with all materials with which they have contact, including other sealant surfaces. Consult with sealant manufacturer for recommendations relative to joint size, shelf life, compatibility, priming, tooling, adhesion, etc.**

**G. FASTENING** - "Fastening" means any method of securing one part to another or to adjacent materials. These instructions specify only those fasteners used within the system. Due to varying perimeter conditions and job performance requirements, anchor fasteners are not specified in these instructions. For anchor fastening, refer to the Shop Drawings or consult the fastener supplier.

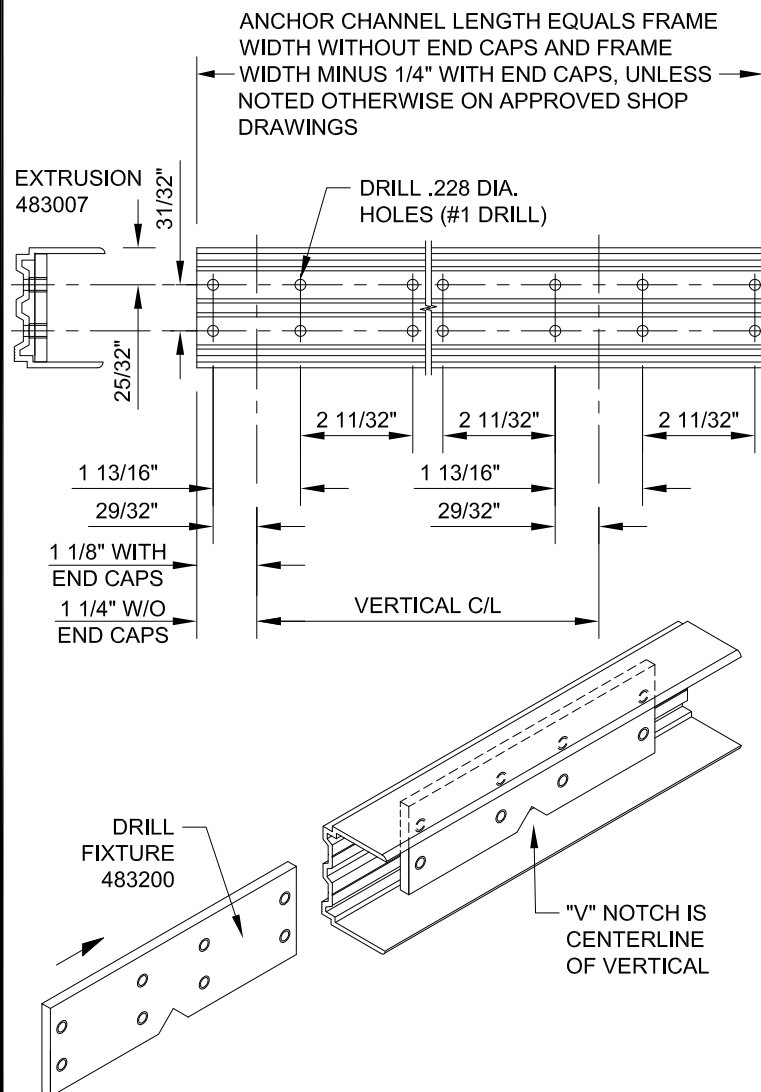
**H. CHECK OPENINGS** - Make certain that the opening which will receive your materials is in accordance with the contract documents. If not, notify the GENERAL CONTRACTOR IN WRITING and resolve differences before proceeding with your work.

**PANEL SIZE FORMULA**

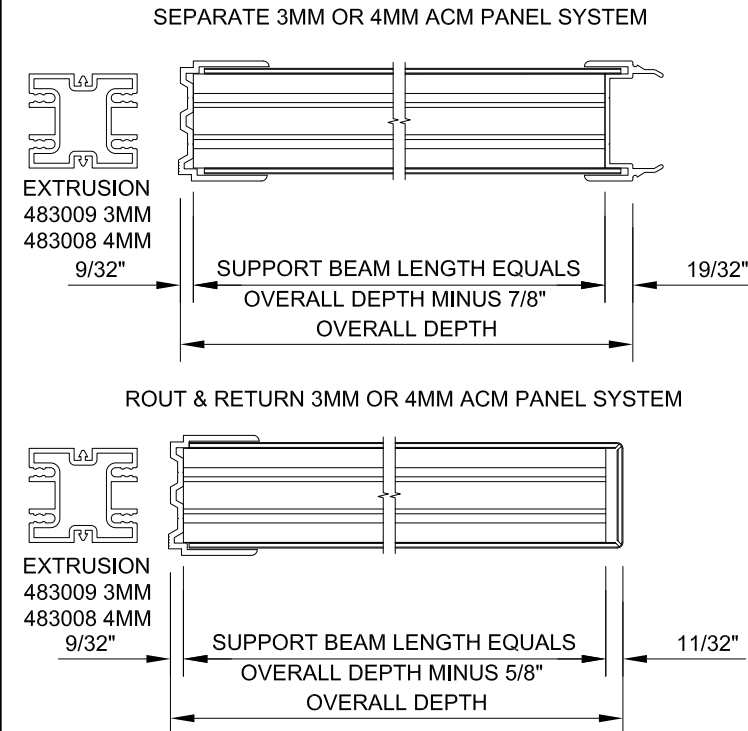
REFERENCE APPROVED SHOP DRAWINGS FOR PANEL WIDTHS.



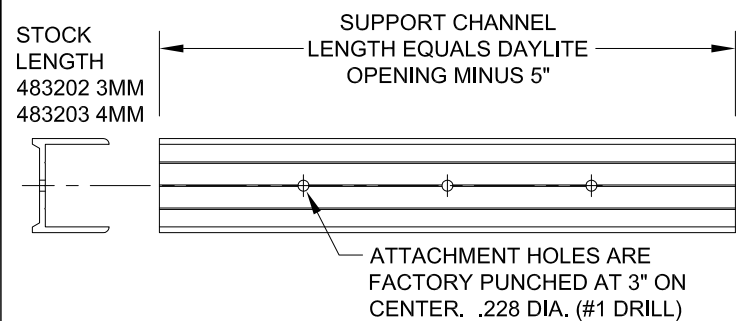
**ANCHOR CHANNEL FABRICATION**



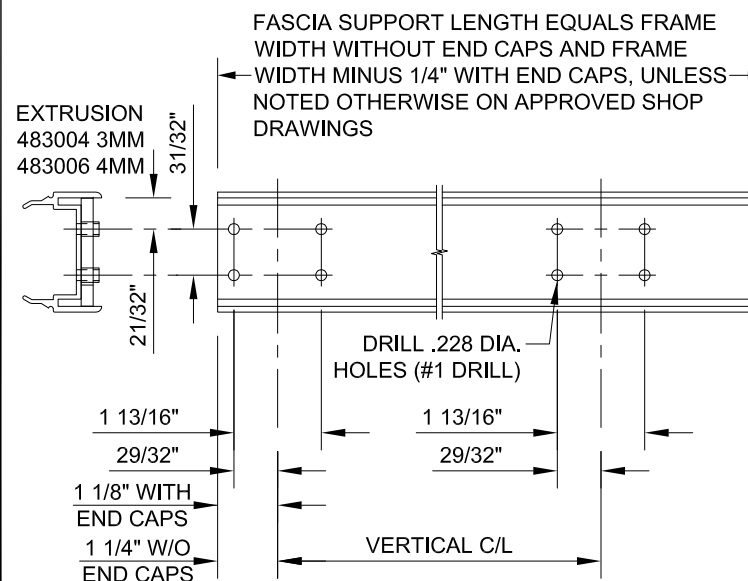
**SUPPORT BEAM FABRICATION**



**SUPPORT CHANNEL FABRICATION**



**FASCIA SUPPORT FABRICATION**

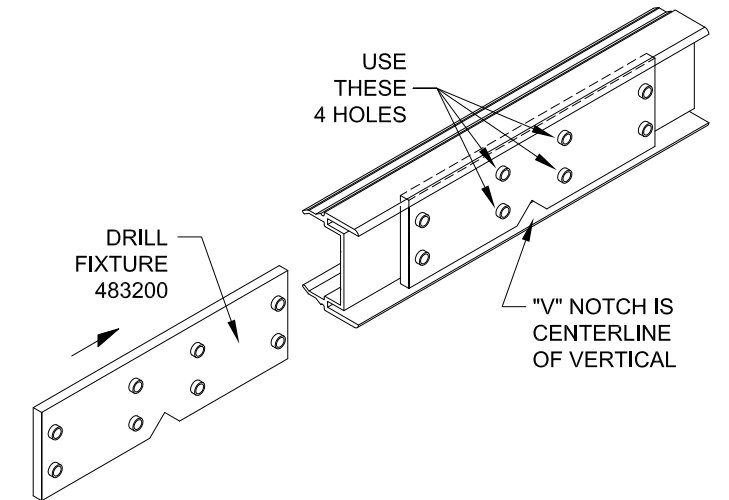


483970 (SHT 01 OF 06)

CONFIDENTIAL AND PROPRIETARY INFORMATION  
KAWNEER COMPANY INC.

THESE DRAWINGS ARE THE SOLE AND EXCLUSIVE PROPERTY OF KAWNEER AND CONTAIN SENSITIVE, PRIVILEGED OR CONFIDENTIAL INFORMATION WHICH MAY BE USED ONLY FOR ITS BENEFIT. THE DISCLOSURE OF THESE DRAWINGS TO UNAUTHORIZED PERSONS IS STRICTLY PROHIBITED. THIS DOCUMENT AND ALL COPIES MUST BE RETURNED UPON DEMAND.  
© COPYRIGHT KAWNEER COMPANY, INC., 2003

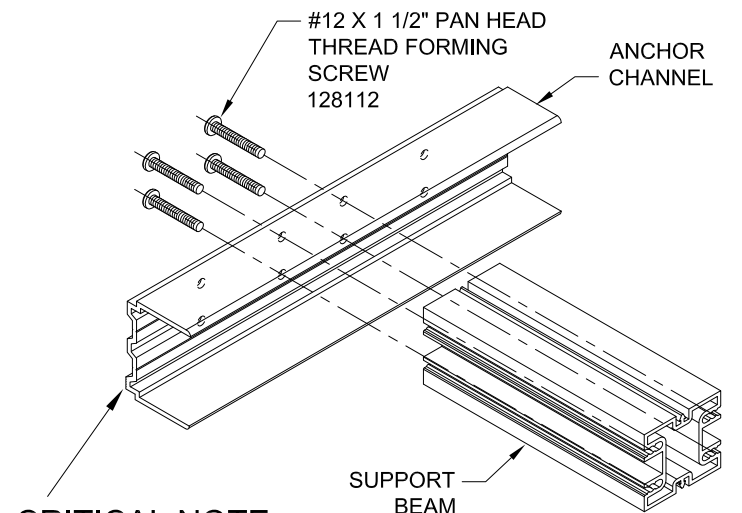
**FASCIA SUPPORT FABRICATION**



**STEP - 1 FRAME ASSEMBLY**

ALIGN ALL PARTS AND MATCH TO SHOP DRAWINGS BEFORE ASSEMBLING.

USING #12 X 1 1/2" PAN HEAD THREAD FORMING SCREWS (128112), JOIN ALL SUPPORT BEAMS (483009 3MM OR 483008 4MM) TO THE ANCHOR CHANNEL (483007) AS SHOWN BELOW.



**CRITICAL NOTE:**  
RIDGED BACK EDGE ON THE 483007 ANCHOR CHANNEL MUST BE ON THE BOTTOM SIDE OF THE LIGHT SHELF.



InLighten  
INSTALLATION  
INSTRUCTIONS

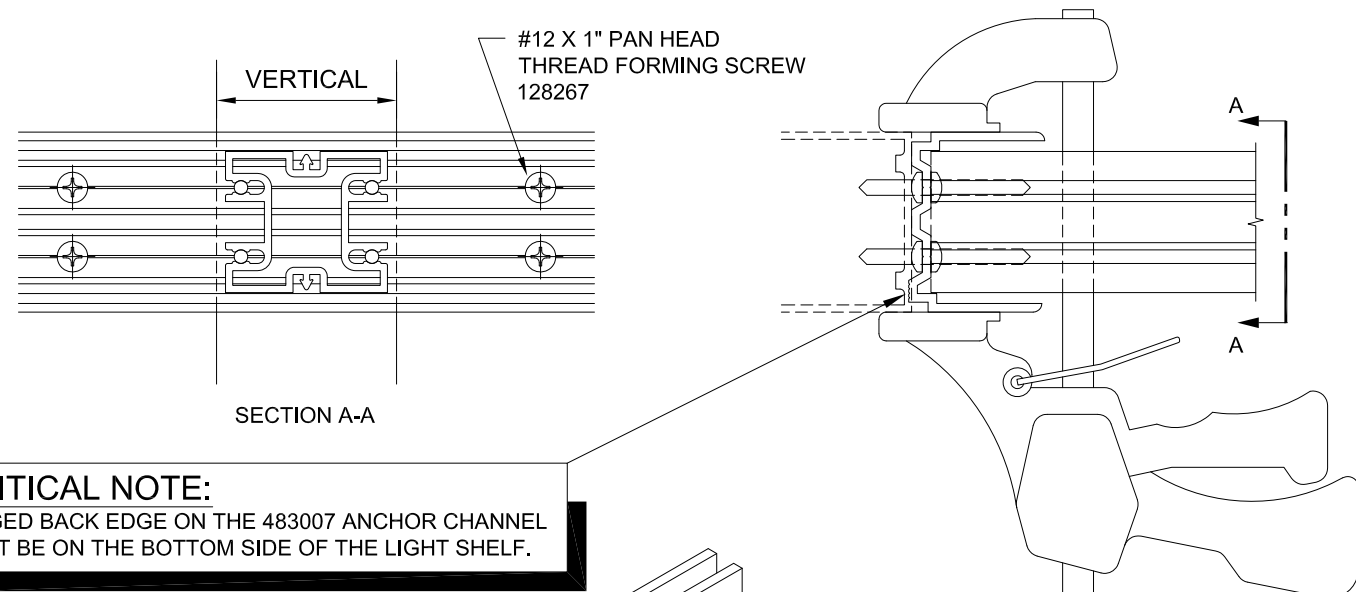
Product Engineering & Development

95498-07  
07/15/09

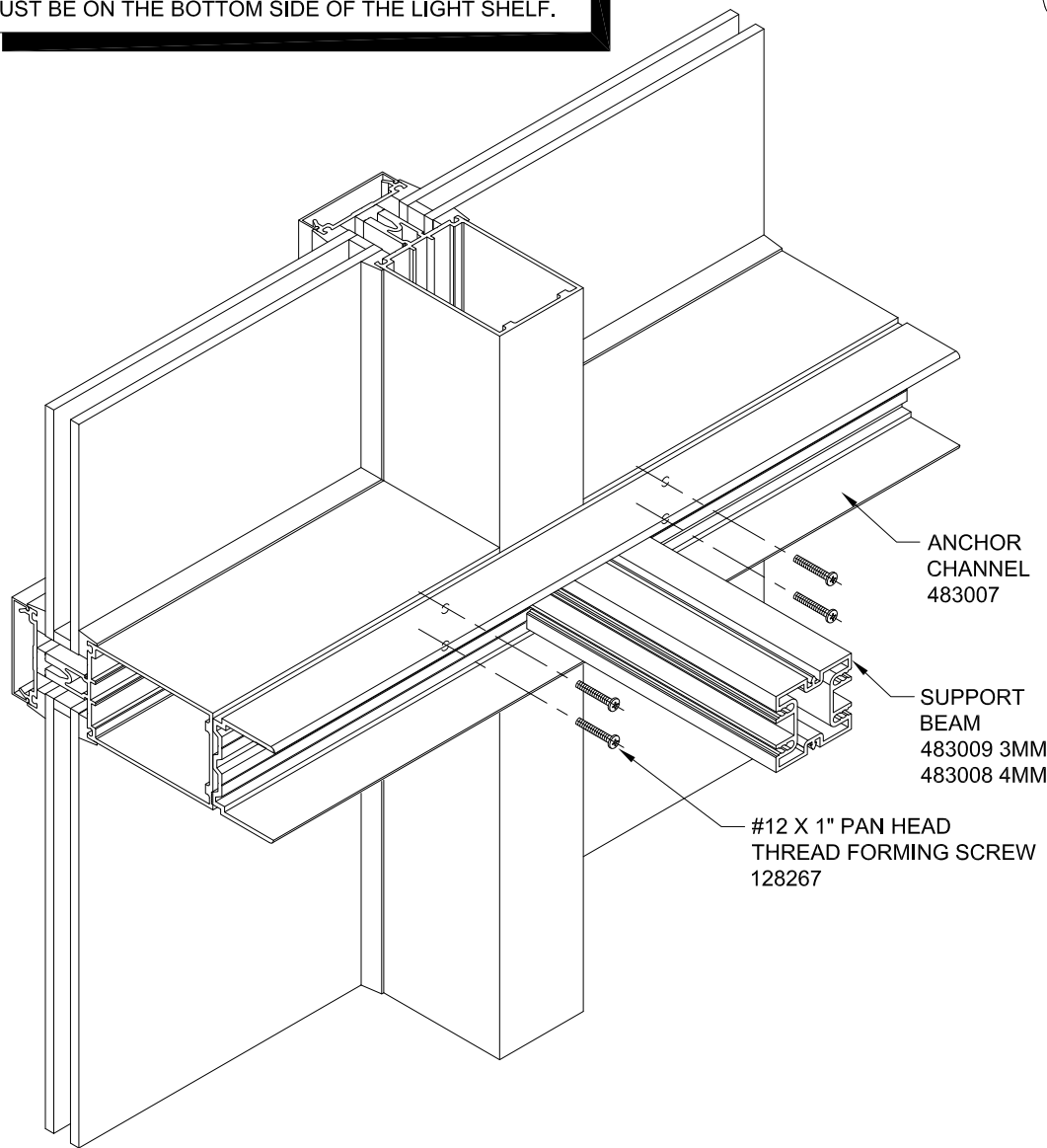
483970 (SHT 01 OF 06)

## STEP - 2 INSTALL FRAME ASSEMBLY

ALIGN THE LIGHT SHELF FRAME SO THE TOP IS FLUSH WITH THE TOP OF THE HORIZONTAL AND THE SUPPORT BEAMS ARE LOCATED AT EVERY VERTICAL AS SHOWN BELOW AND CLAMP INTO PLACE. MATCH DRILL .180 DIA. HOLES (#15 DRILL) AT EACH SIDE OF OUTRIGGER AND INSTALL (4) #12 X 1" PAN HEAD THREAD FORMING SCREWS (128267) AND FASTEN THE LIGHT SHELF BACK TO THE HORIZONTAL THROUGH THE ANCHOR CHANNEL (483007) AS SHOWN BELOW.

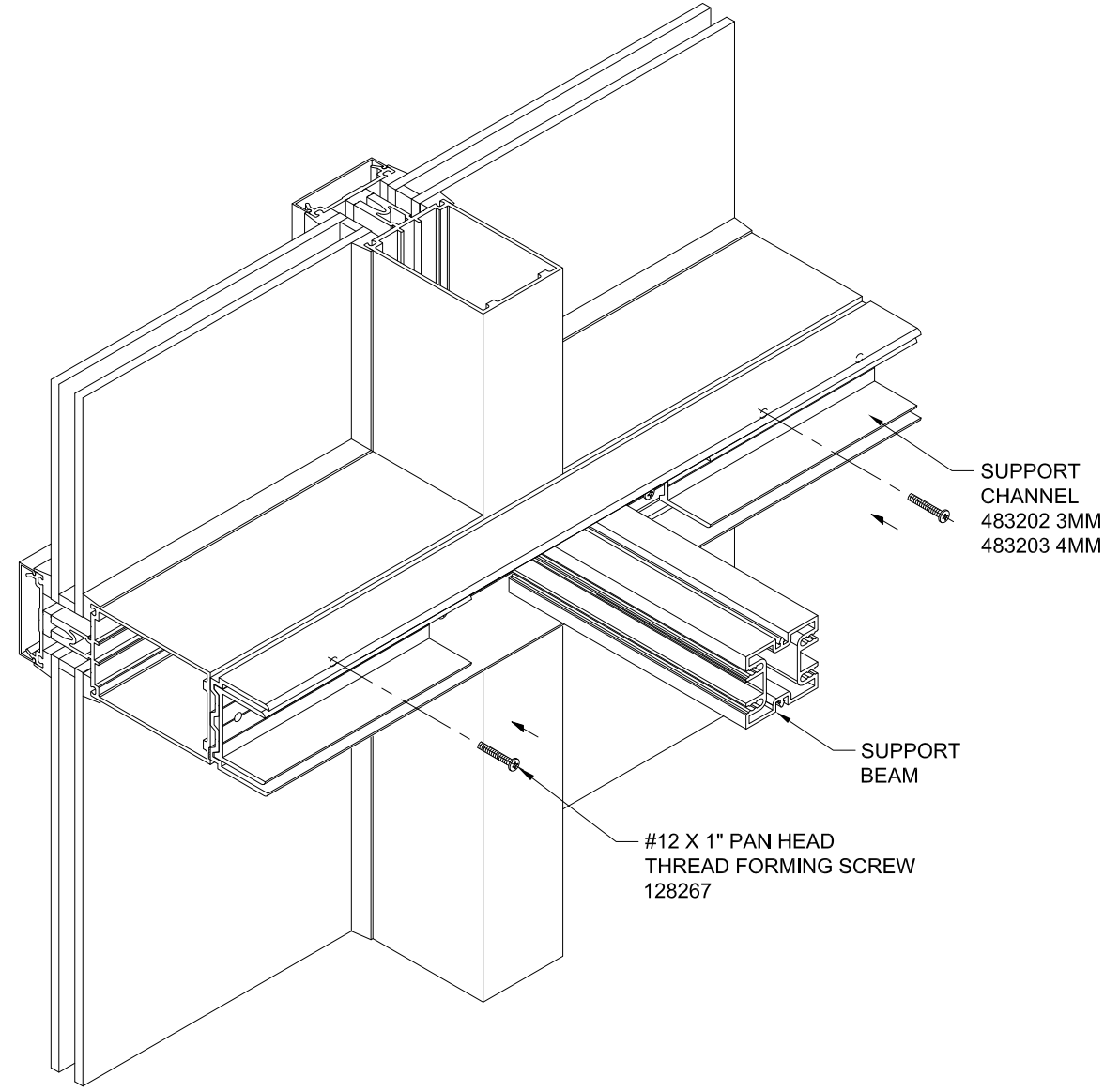


**CRITICAL NOTE:**  
RIDGED BACK EDGE ON THE 483007 ANCHOR CHANNEL MUST BE ON THE BOTTOM SIDE OF THE LIGHT SHELF.



## STEP - 3 INSTALL SUPPORT CHANNEL

INSTALL SUPPORT CHANNEL (483202 3MM OR 483203 4MM) CENTERED BETWEEN SUPPORT BEAMS (483009 3MM OR 483008 4MM) AS SHOWN BELOW. MATCH DRILL .196 DIA. HOLES (#9 DRILL) AS CLOSE AS POSSIBLE TO THE SUPPORT CHANNEL ENDS AND 12" ON CENTER. INSTALL #12 X 1" PAN HEAD THREAD FORMING SCREWS (128267) AND FASTEN THE SUPPORT CHANNEL BACK TO THE HORIZONTAL AS SHOWN BELOW.



CONFIDENTIAL AND PROPRIETARY INFORMATION  
KAWNEER COMPANY INC.

THESE DRAWINGS ARE THE SOLE AND EXCLUSIVE PROPERTY OF KAWNEER AND CONTAIN SENSITIVE, PRIVILEGED OR CONFIDENTIAL INFORMATION WHICH MAY BE USED ONLY FOR ITS BENEFIT. THE DISCLOSURE OF THESE DRAWINGS TO UNAUTHORIZED PERSONS IS STRICTLY PROHIBITED. THIS DOCUMENT AND ALL COPIES MUST BE RETURNED UPON DEMAND.  
© COPYRIGHT KAWNEER COMPANY, INC., 2003

	InLighten INSTALLATION INSTRUCTIONS	
	Product Engineering & Development	
95498-07 07/15/09	483970 (SHT 02 OF 06)	

## STEP - 4 INSTALL ACM PANELS

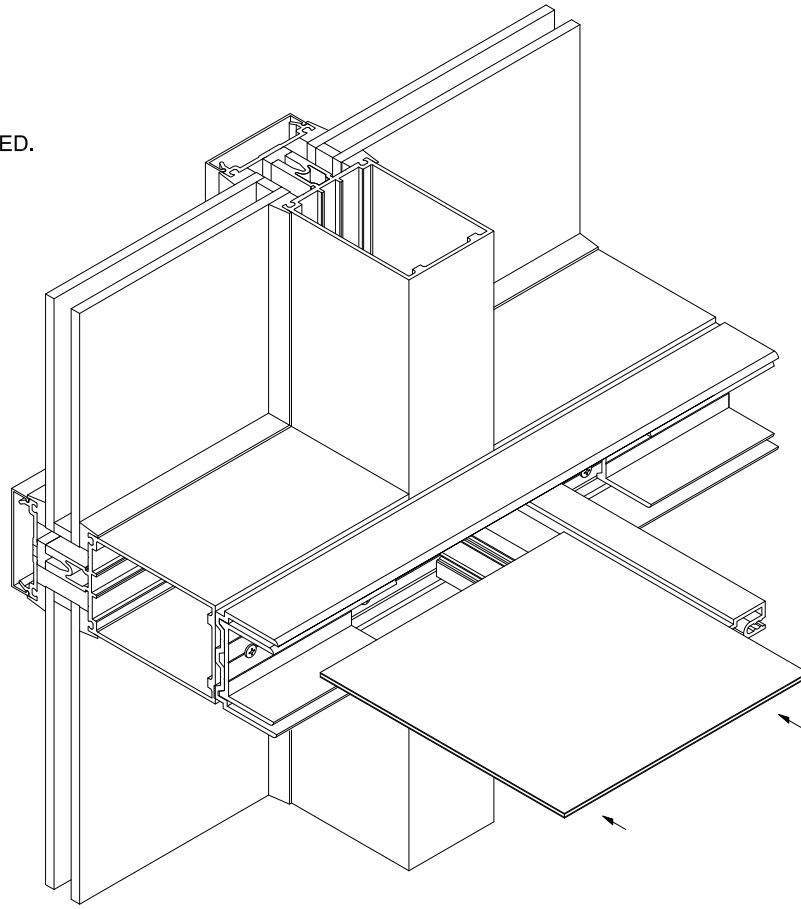
ARRANGE THE PANELS ON THE CONSTRUCTION SITE ACCORDING TO THE POSITION ON THE BUILDING AND CHECK AGAINST SHOP DRAWINGS.

IMPORTANT NOTE: DO NOT BEGIN INSTALLATION UNTIL ALL PANELS ARE PROPERLY IDENTIFIED AND POSITIONED.

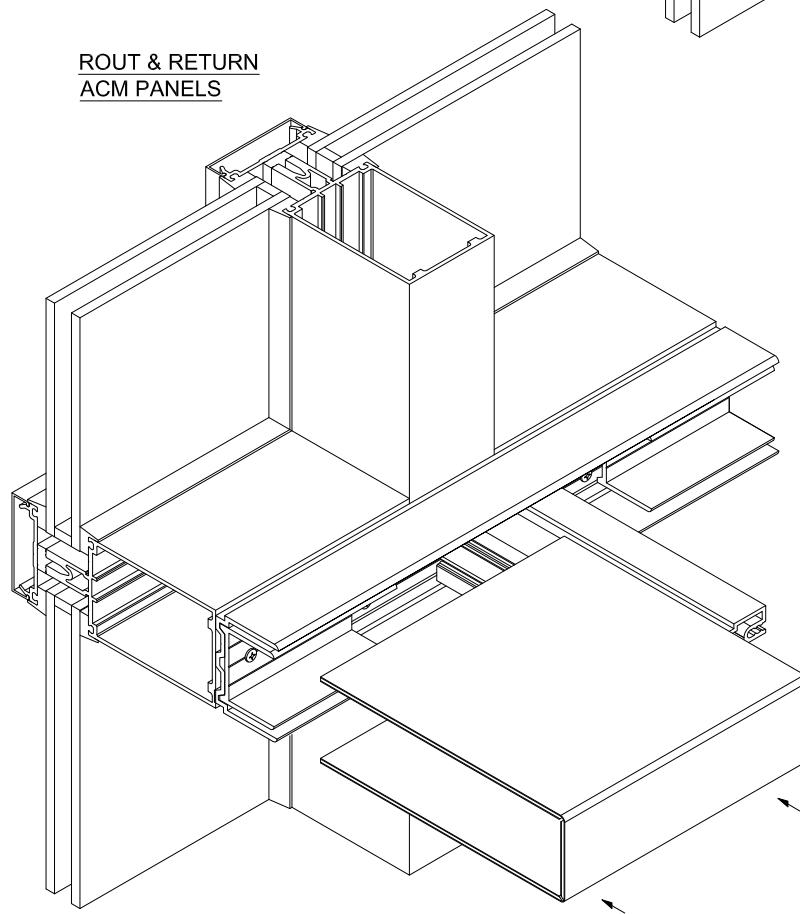
INSTALL THE ACM PANELS BY SLIDING THEM INTO THE TOP AND BOTTOM BETWEEN THE CHANNELS AS SHOWN BELOW.

USE A GLASS CUP AT THE CENTER OF THE TOP OF THE PANEL TO HELP ALIGN PANEL EDGE WITH SUPPORT CHANNEL IF NECESSARY.

2 SEPARATE  
ACM PANELS



ROUT & RETURN  
ACM PANELS

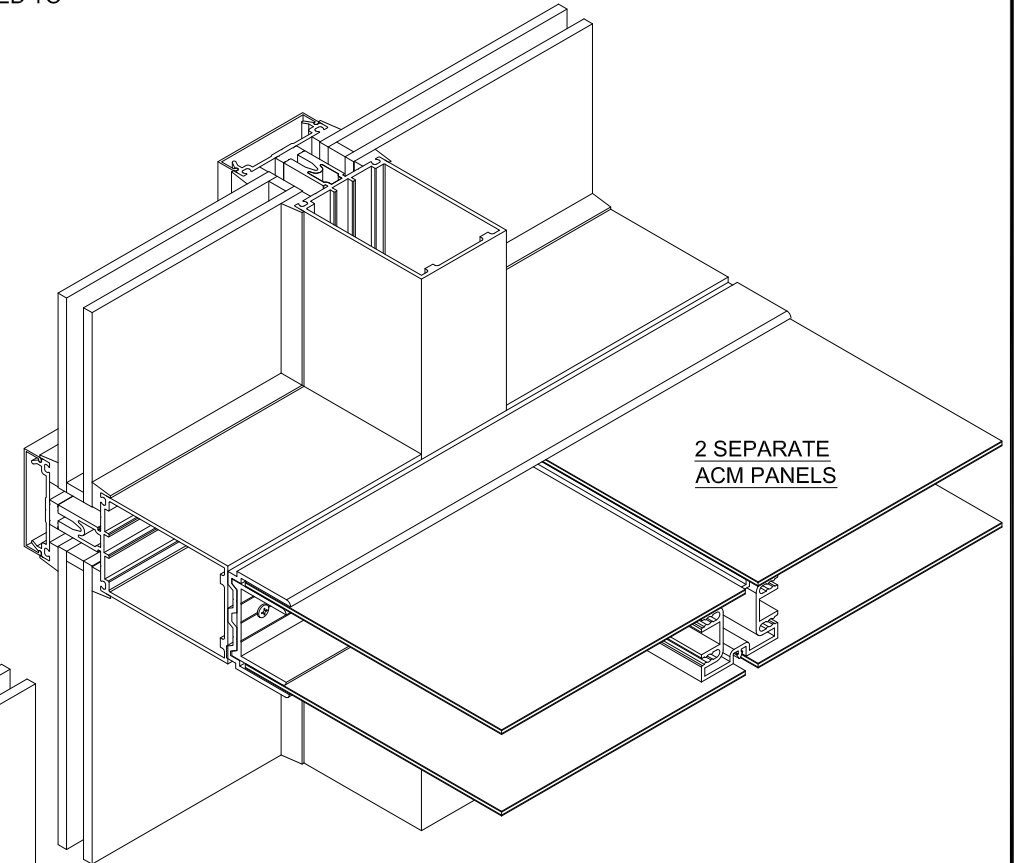


## STEP - 4 INSTALL ACM PANELS

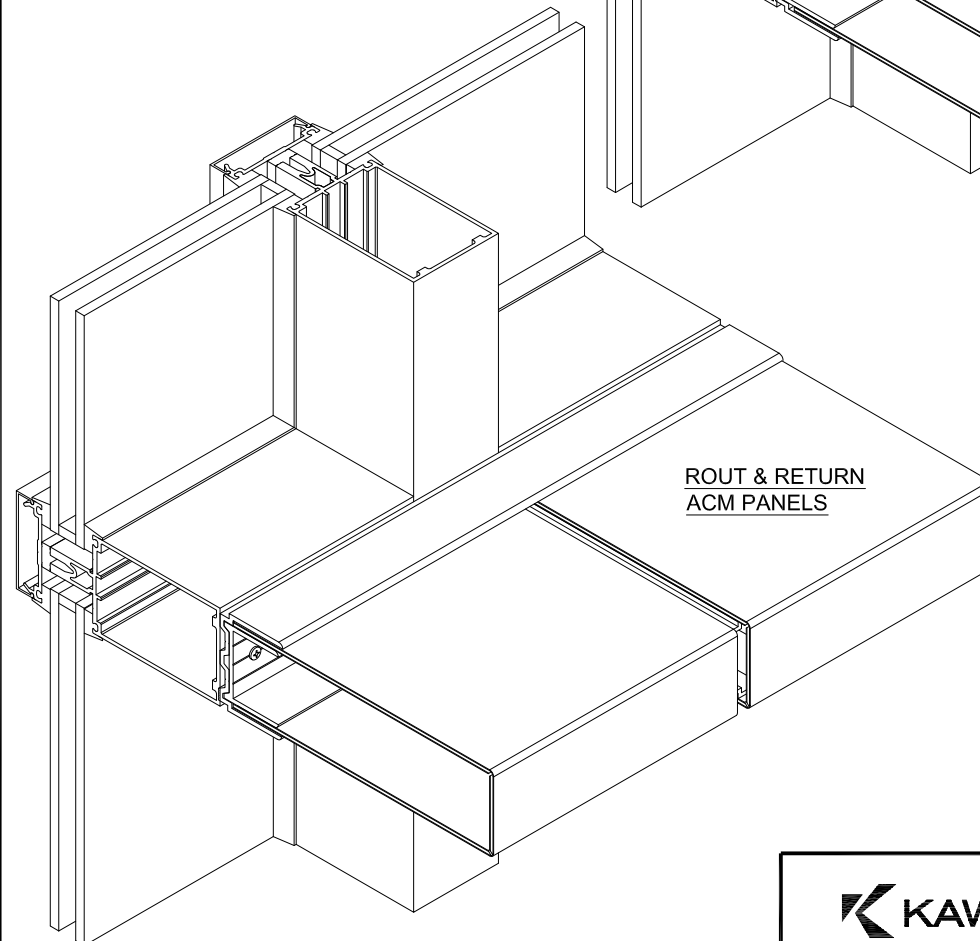
ONCE THE ACM PANELS ARE INSTALLED, USE QUICK CLAMPS AT SUPPORT BEAM TO TEMPORARILY SECURE PANELS IN PLACE IF NECESSARY.

FOR ROUT AND RETURN ACM PANELS, PROCEED TO STEP 7.

2 SEPARATE  
ACM PANELS



ROUT & RETURN  
ACM PANELS



483970 (SHT 03 OF 06)

CONFIDENTIAL AND PROPRIETARY INFORMATION  
KAWNEER COMPANY INC.

THESE DRAWINGS ARE THE SOLE AND EXCLUSIVE PROPERTY OF KAWNEER AND CONTAIN SENSITIVE, PRIVILEGED OR CONFIDENTIAL INFORMATION WHICH MAY BE USED ONLY FOR ITS BENEFIT. THE DISCLOSURE OF THESE DRAWINGS TO UNAUTHORIZED PERSONS IS STRICTLY PROHIBITED. THIS DOCUMENT AND ALL COPIES MUST BE RETURNED UPON DEMAND.  
© COPYRIGHT KAWNEER COMPANY, INC., 2003

 **KAWNEER**

InLighten  
INSTALLATION  
INSTRUCTIONS

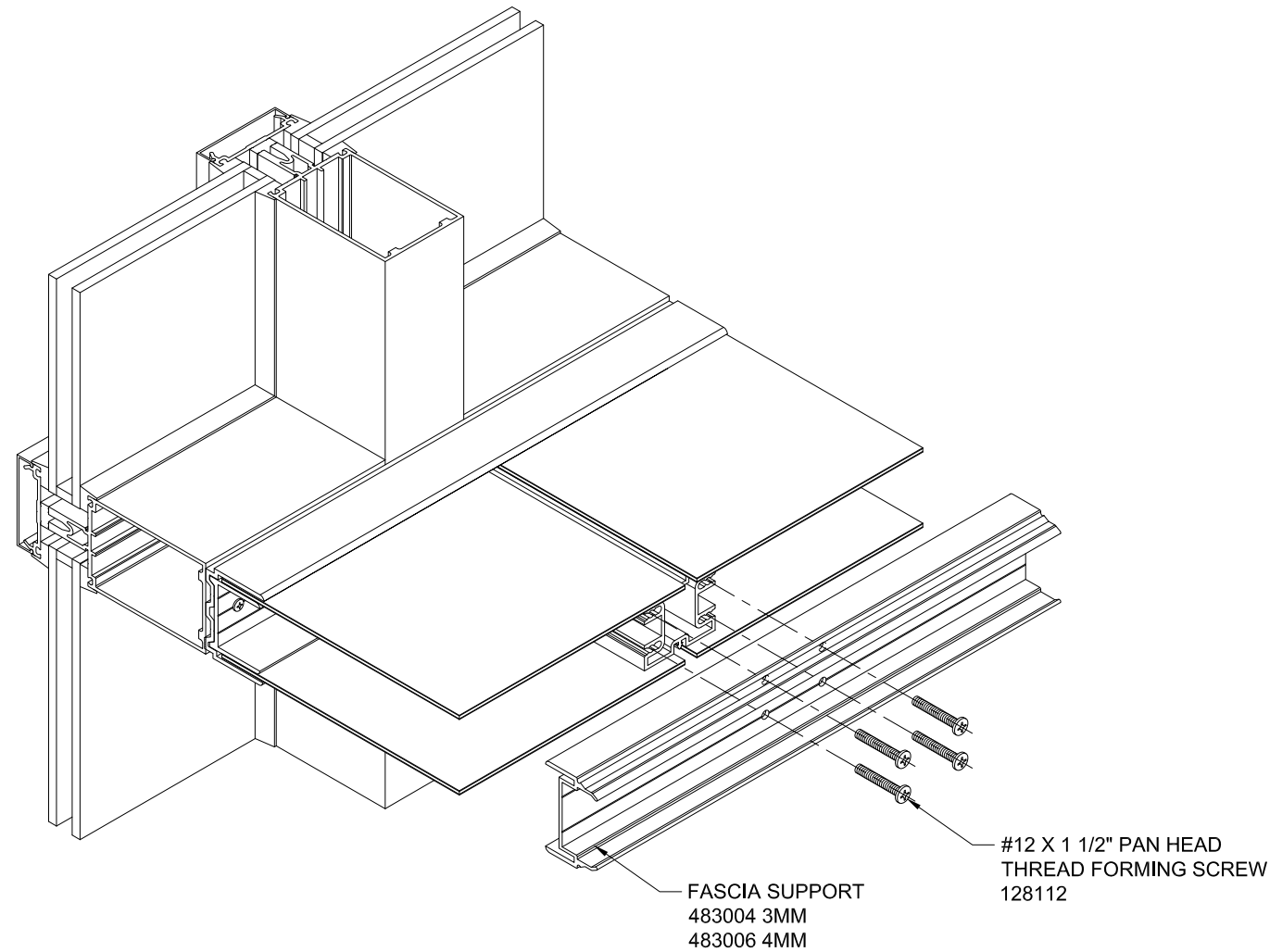
Product Engineering & Development

95498-07  
07/15/07

483970 (SHT 03 OF 06)

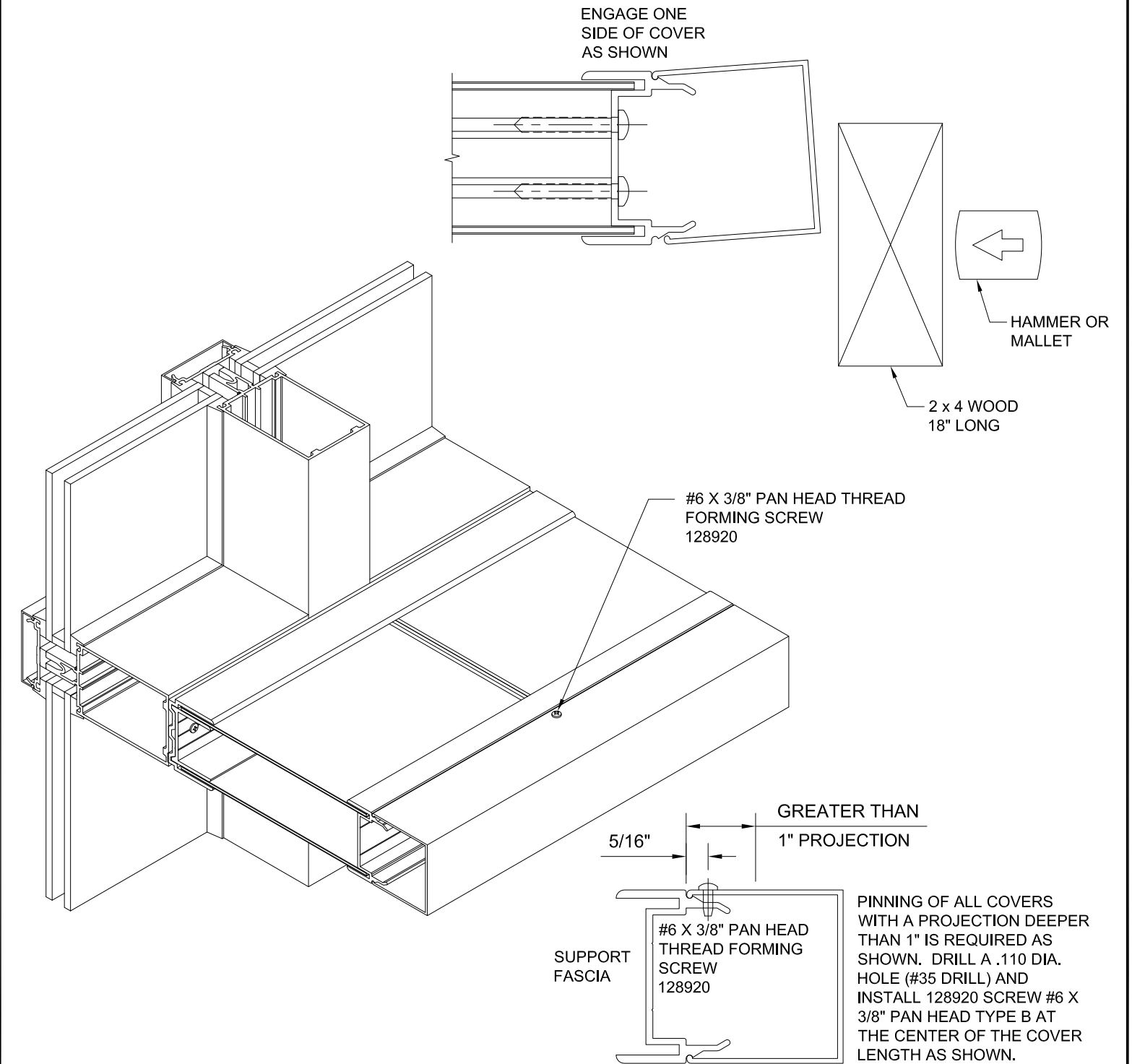
**STEP - 5 INSTALL FASCIA SUPPORT**

USING #12 X 1 1/2" PAN HEAD THREAD FORMING SCREWS (128112), JOIN THE FASCIA SUPPORT (483004 3MM OR 483006 4MM) TO ALL OF THE SUPPORT BEAMS AS SHOWN BELOW. USE A GLASS CUP AT THE CENTER OF THE TOP OF THE PANEL TO HELP ALIGN PANEL EDGE WITH FASCIA SUPPORT.



**STEP - 6 INSTALL INTERIOR COVER**

CARE MUST BE TAKEN TO AVOID DAMAGE TO THE COVERS DURING INSTALLATION. USE A 18" LONG PIECE OF 2 X 4 WOOD ALONG WITH A HAMMER OR Mallet TO SEAT THE COVER AS SHOWN BELOW.



InLighten  
INSTALLATION  
INSTRUCTIONS

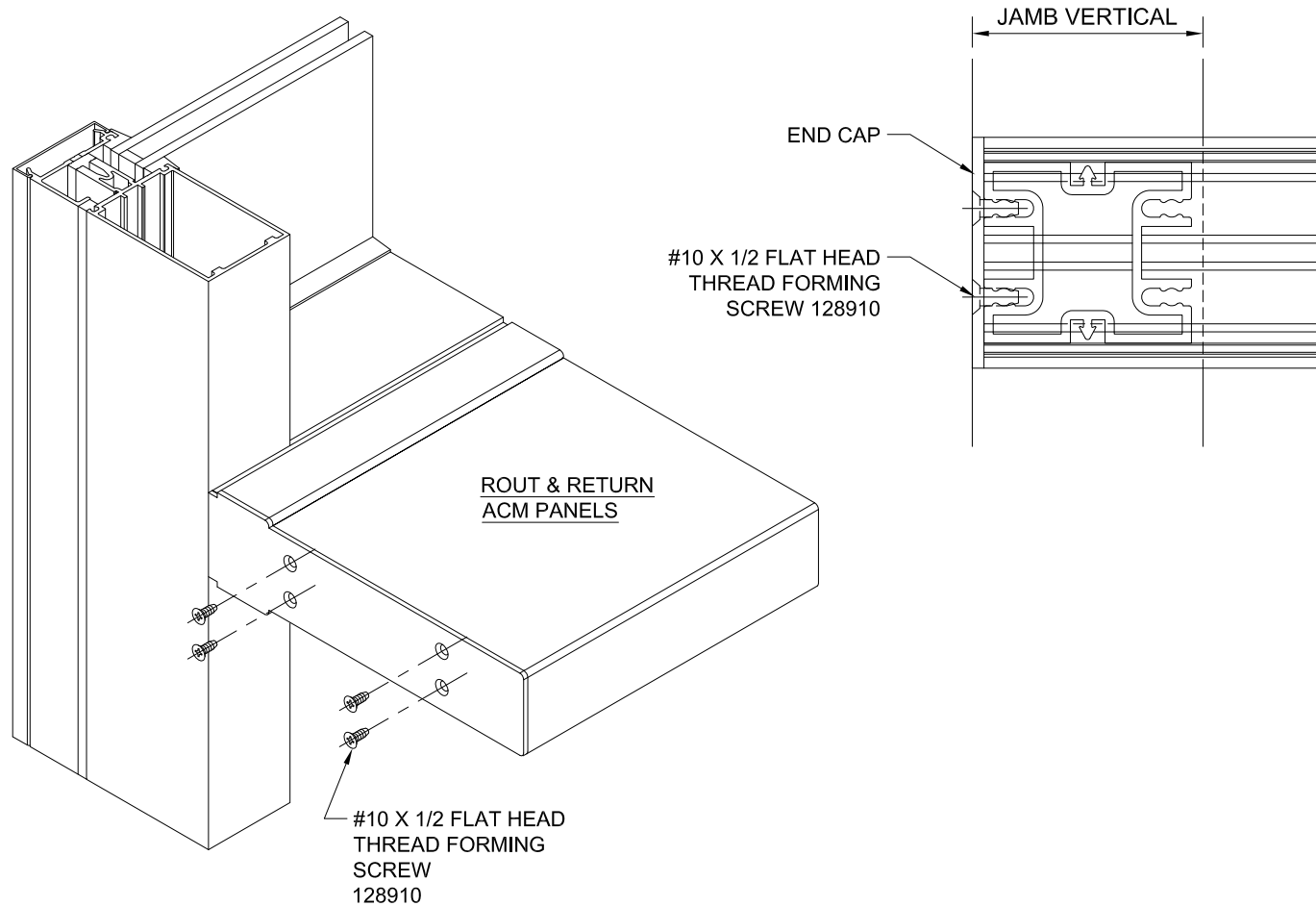
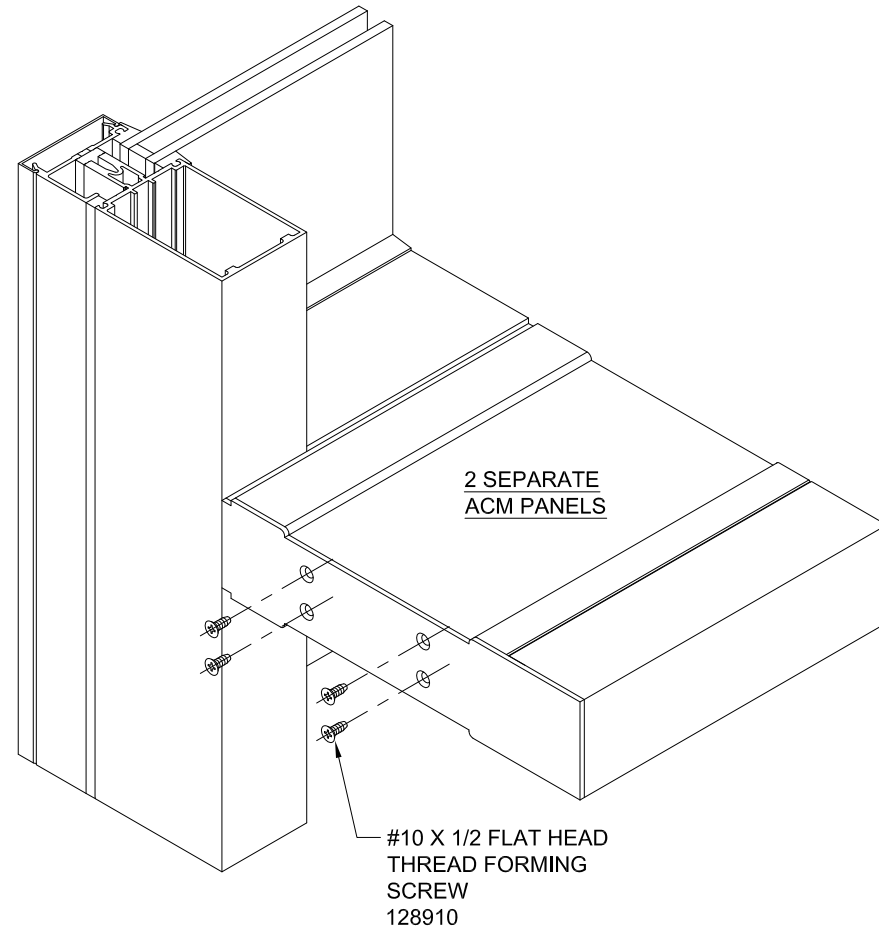
Product Engineering & Development

95498-07  
07/15/09

483970 (SHT 04 OF 06)

### STEP - 7 INSTALL END CAPS

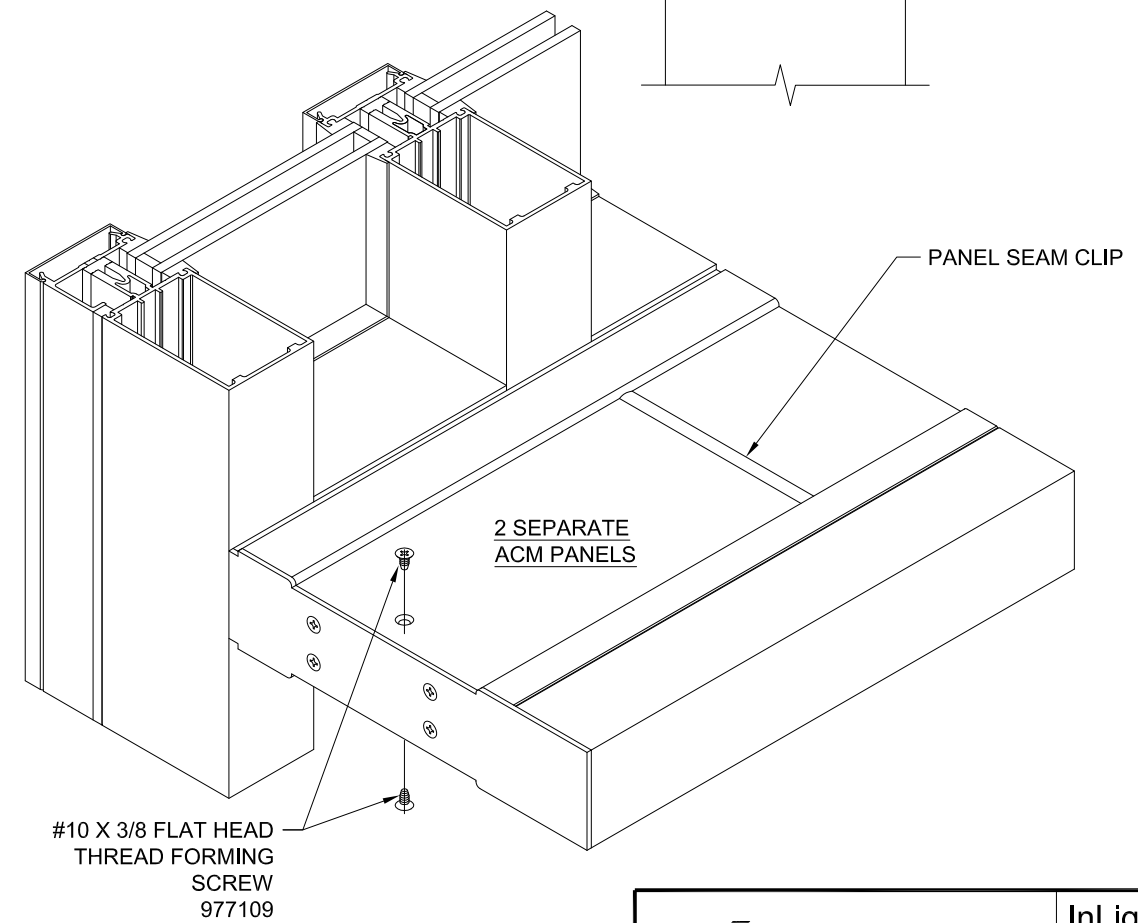
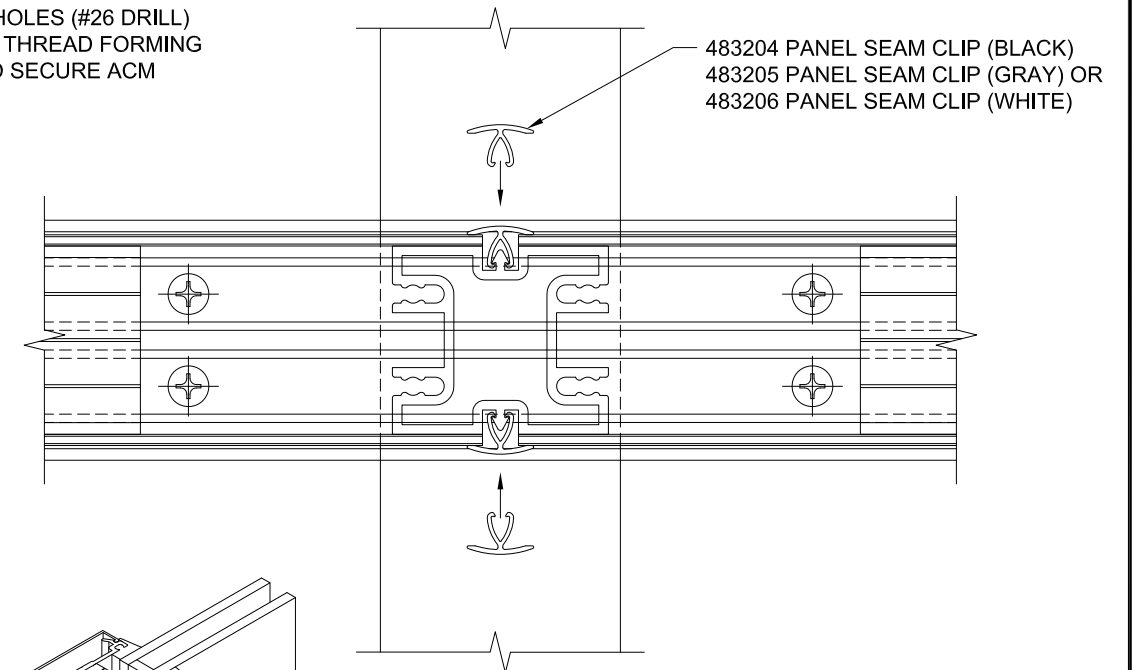
INSTALL END CAPS WITH #10 X 1/2" FLAT HEAD THREAD FORMING SCREWS (128910). REFERENCE APPROVED SHOP DRAWINGS FOR END CAPS AND USAGE.



### STEP - 8 AT 2 SEPARATE ACM PANELS, APPLY PANEL SEAM CLIP

CUT PANEL SEAM CLIP TO LENGTH WITH GASKET CUTTERS. PART LENGTH TO FIT TIGHT BETWEEN ANCHOR CHANNEL AND FASCIA SUPPORT. ALIGN ENGAGEMENT AND TAP IN WITH RUBBER Mallet.

AT JAMBS, MATCH DRILL .147 DIA. HOLES (#26 DRILL) AND INSTALL #10 X 3/8" FLAT HEAD THREAD FORMING SCREWS (977109) AS REQUIRED TO SECURE ACM PANELS AND PREVENT BOWING.



483970 (SHT 05 OF 06)

CONFIDENTIAL AND PROPRIETARY INFORMATION  
KAWNEER COMPANY INC.

THESE DRAWINGS ARE THE SOLE AND EXCLUSIVE PROPERTY OF KAWNEER AND CONTAIN SENSITIVE, PRIVILEGED OR CONFIDENTIAL INFORMATION WHICH MAY BE USED ONLY FOR ITS BENEFIT. THE DISCLOSURE OF THESE DRAWINGS TO UNAUTHORIZED PERSONS IS STRICTLY PROHIBITED. THIS DOCUMENT AND ALL COPIES MUST BE RETURNED UPON DEMAND.  
© COPYRIGHT KAWNEER COMPANY, INC., 2003

**KAWNEER**

InLighten  
INSTALLATION  
INSTRUCTIONS

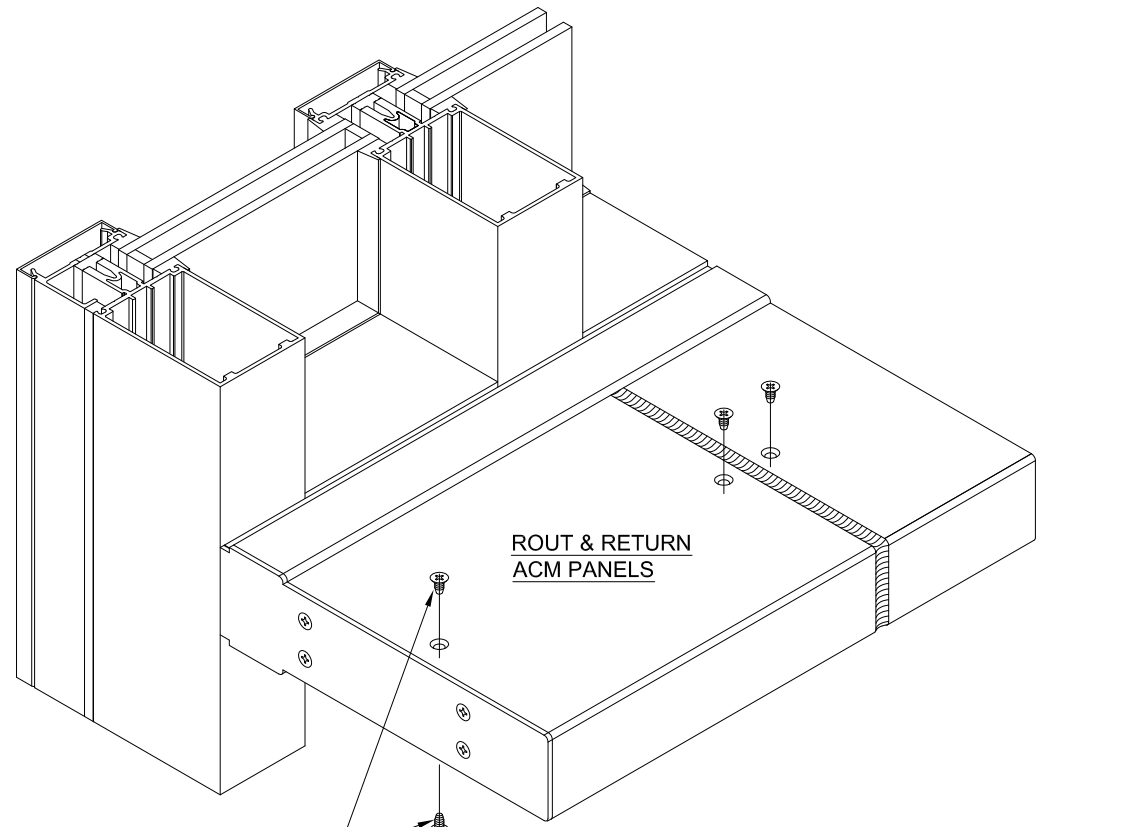
Product Engineering & Development

95498-05  
02/21/07

483970 (SHT 05 OF 06)

**STEP - 8 AT ROUT & RETURN ACM PANELS,  
APPLY FIXING SCREWS AND JOINT SEALS**

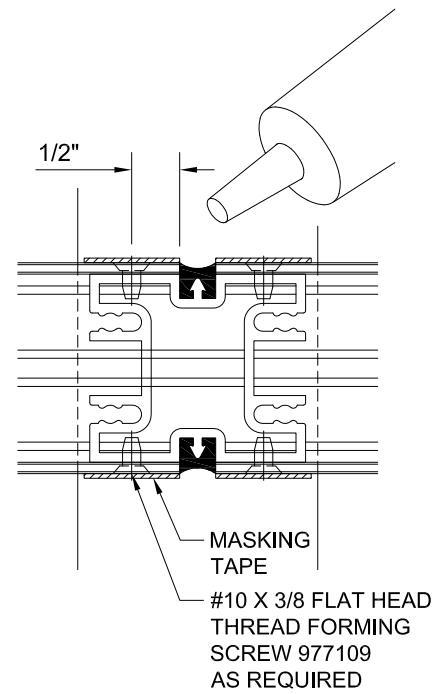
MATCH DRILL .147 DIA. HOLES (#26 DRILL) AND INSTALL #10 X 3/8" FLAT HEAD THREAD FORMING SCREWS (977109) AS REQUIRED TO SECURE ACM PANELS AND PREVENT BOWING.



#10 X 3/8 FLAT HEAD  
THREAD FORMING  
SCREW  
977109

APPLY SEALANT AT  
ALL PANEL JOINTS  
AS SHOWN.

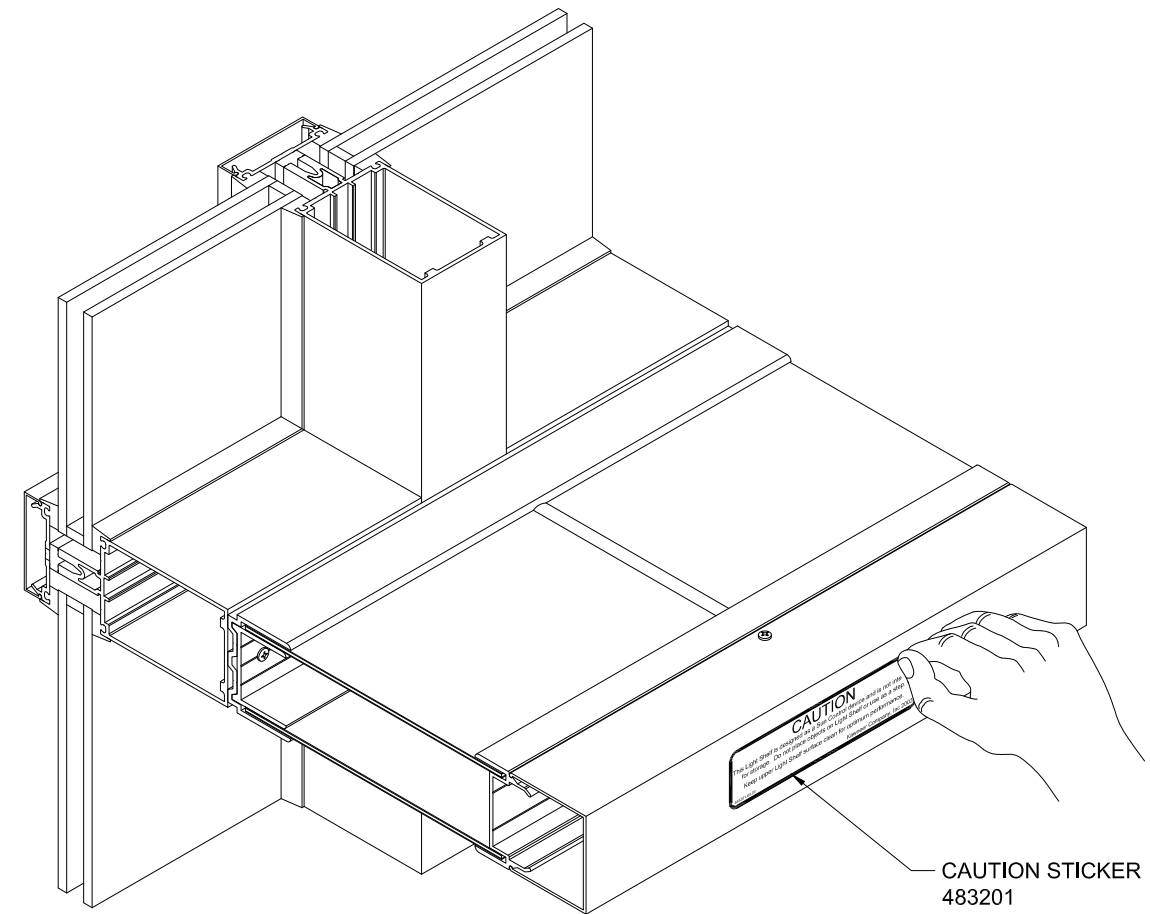
SEALANT MUST BE  
APPLIED PER THE  
SEALANT  
MANUFACTURER'S  
RECOMMENDATIONS.



MASKING  
TAPE  
#10 X 3/8 FLAT HEAD  
THREAD FORMING  
SCREW 977109  
AS REQUIRED

**STEP - 9 INSTALL CAUTION STICKERS**

INSTALL ONE CAUTION STICKER (483201) PER PUNCHED  
OPENING AND ONE EVERY 4TH DAYLITE OPENING ON  
CONTINUOUS UNINTERRUPTED APPLICATIONS.



CAUTION STICKER  
483201

483970 (SHT 06 OF 06)

CONFIDENTIAL AND PROPRIETARY INFORMATION  
KAWNEER COMPANY INC.

THESE DRAWINGS ARE THE SOLE AND EXCLUSIVE PROPERTY OF KAWNEER AND CONTAIN SENSITIVE, PRIVILEGED OR CONFIDENTIAL INFORMATION WHICH MAY BE USED ONLY FOR ITS BENEFIT. THE DISCLOSURE OF THESE DRAWINGS TO UNAUTHORIZED PERSONS IS STRICTLY PROHIBITED. THIS DOCUMENT AND ALL COPIES MUST BE RETURNED UPON DEMAND.  
© COPYRIGHT KAWNEER COMPANY, INC., 2003



InLighten  
INSTALLATION  
INSTRUCTIONS

Product Engineering & Development

95498-07  
07/15/09

483970 (SHT 06 OF 06)