

HANDLING, STORING, AND PROTECTION OF ALUMINUM

The material must be protected against damage. The following precautions are recommended to assure early acceptance of your products and workmanship.

A. HANDLE CAREFULLY - Don't drop from the truck. Stack with adequate separation so material will not rub together. Store off the ground. Protect against elements and other construction trades. Wear hand protection to prevent injury due to sharp edges of cut extrusions.

B. KEEP MATERIAL AWAY FROM WATER, MUD AND SPRAY - Prevent cement, plaster, or other materials from damaging the finish.

C. PROTECT THE MATERIALS AFTER ERECTION - Protect by wrapping with Kraft paper or by erecting Visqueen or canvas splatter screen. Cement, plaster, terrazzo, other alkaline solutions and acid based materials used to clean masonry are very harmful to the finish and should be removed with water and mild soap IMMEDIATELY.

GENERAL INSTALLATION NOTES

The following practices are recommended for all installations:

A. CHECK SHOP DRAWINGS, INSTALLATION INSTRUCTIONS and GLAZING INSTRUCTIONS to become thoroughly familiar with the project. The SHOP DRAWINGS take precedence and include specific details for the project. The INSTALLATION INSTRUCTIONS are of a general nature and cover most common conditions.

B. All materials are to be INSTALLED PLUMB, LEVEL, AND TRUE.

C. All work should start from bench marks and/or column lines as established by the ARCHITECTURAL DRAWINGS and the GENERAL CONTRACTOR. Check mullion spacing from both ends of the masonry opening to prevent dimensional buildup of day light opening.

D. Make certain that construction which will receive your materials is in accordance with the contract documents. If not, notify the GENERAL CONTRACTOR IN WRITING and resolve differences before proceeding with your work.

E. Isolate all aluminum to be placed directly in contact with uncured masonry or incompatible materials with a heavy coat of zinc chromate or bituminous paint.

F. Check all materials on arrival for quantity and be sure you have everything required to begin installation.

G. Sealants must be compatible with all materials with which they have contact, including other sealant surfaces. Consult with sealant manufacturer for recommendations relative to joint size, shelf life, compatibility, priming, tooling, adhesion, etc.

H. FASTENING - "Fastening" means any method of securing one part to another or to adjacent materials. These instructions specify only those fasteners used within the system. Due to varying perimeter conditions and job performance requirements, anchor fasteners are not specified in these instructions. For anchor fastening, refer to the Shop Drawings or consult the fastener supplier.

I. CHECK OPENINGS - Make certain that the opening which will receive your materials is in accordance with the contract documents. If not, notify the GENERAL CONTRACTOR IN WRITING and resolve differences before proceeding with your work.

J. BUILDING CODES - Glass and glazing codes governing the design and use of products vary widely. Kawneer does not control the selection of product configurations, operating hardware, or glazing materials, and assumes no responsibility for these design considerations. It is the responsibility of the owner, specifier, architect, general contractor and the installer to make these selections in strict conformance with all applicable codes.

K. EXPANSION JOINTS - Expansion joints and perimeter seals shown in these instructions and in the shop drawings are shown at normal size. Actual dimensions may vary due to perimeter conditions and/or difference in metal temperature between the time of fabrication and time of installation. For example, a 12 foot unrestrained length of aluminum extrusion can expand or contract 3/32" over a 50° F temperature change. Any movement potential should be accounted for at the time of installation.

L. FIELD TESTING - It is recommended that a Water Hose Test be conducted once a sufficient portion of the framing is installed, glazed and caulked to ensure proper installation. The Water Hose Test shall be conducted in accordance with AAMA 501.2. In addition, larger projects should have periodic Water Hose Tests as additional precautionary measures.

SILICONE GLAZING NOTE

This SSG system requires structural silicone. The glazing installer is responsible for selecting and contacting the silicone manufacturer to determine which type of silicone is to be used and what samples are required to be submitted for adhesion and compatibility testing. The silicone sealant shall not be applied to Kawneer products without the approval of the silicone manufacturer and until all required testing is completed and detailed application instructions have been delivered to the installer by the silicone manufacturer. If you find that silicone manufacturer's installation instructions are not in accordance with Kawneer's installation instructions, it is your responsibility to notify Kawneer of the conflict **prior to glazing**.

Your glass supplier must be made aware that their glass will be used in an SSG application. The application must be approved by the glass supplier **prior to glazing**.

For any structural silicone glazed product application that is not shown in Kawneer's standard literature, the application must be approved.

2500UT - SSG NOTES

This SSG system is available for 1" Infill only. Framing members are designed for 1" Infill at vision and spandrel lites. The glass bite is typically 7/8" at verticals and horizontals. The glass bite at the head of the units is 1". All glass lites require structural silicone on all four sides. Glass sizes must be calculated from approved shop drawings.

This system is designed to allow 3/4" **total movement** at the expansion horizontal.

Unitwall systems are designed to be assembled in a shop. If units are assembled by the customer, adequate floor space should be made available for storage of glass and materials, staging, assembly, glazing and packing of units. Accommodations should also be made for handling of glass and glazed units. Retain structural silicone batch numbers and tests performed per sealant manufacturer's recommendations.

If insulation is applied to the units in our customers shop, additional precautions must be taken to protect it from getting wet during shipping and after installation.

Units should be assembled, packed, shipped and staged at the job site in order of unit installation to reduce additional handling.

Installation of sill starter tracks and anchors must be completed prior to installation of units. Separate aluminum sill starter track and anchors from concrete and steel building substrates.

Unless otherwise specified, it is recommended that silicone sealant be used for all internal seals.

Sealant must be applied per the sealant manufacturer's recommendations and pass all adhesion and compatibility testing. At all joint seals, sealant must adhere to metal, gaskets, thermal separator and joint plug materials. Clean all surfaces prior to application of sealant and prime where necessary to achieve proper adhesion.

**CONFIDENTIAL AND PROPRIETARY INFORMATION
KAWNEER COMPANY INC.**

THESE DRAWINGS ARE THE SOLE AND EXCLUSIVE PROPERTY OF KAWNEER AND CONTAIN SENSITIVE, PRIVILEGED OR CONFIDENTIAL INFORMATION WHICH MAY BE USED ONLY FOR ITS BENEFIT. THE DISCLOSURE OF THESE DRAWINGS TO UNAUTHORIZED PERSONS IS STRICTLY PROHIBITED. THIS DOCUMENT AND ALL COPIES MUST BE RETURNED UPON DEMAND.
© COPYRIGHT KAWNEER COMPANY, INC., 2015



2500 UT
SSG
INSTALLATION
INSTRUCTIONS

Product Engineering & Development

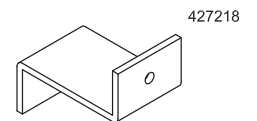
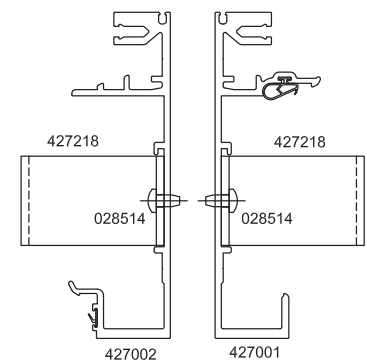
95524-005
06/30/15

CONFIDENTIAL AND PROPRIETARY INFORMATION
KAWNEER COMPANY INC.

THESE DRAWINGS ARE THE SOLE AND EXCLUSIVE PROPERTY OF KAWNEER AND CONTAIN SENSITIVE, PRIVILEGED OR CONFIDENTIAL INFORMATION WHICH MAY BE USED ONLY FOR ITS BENEFIT. THE DISCLOSURE OF THESE DRAWINGS TO UNAUTHORIZED PERSONS IS STRICTLY PROHIBITED. THIS DOCUMENT AND ALL COPIES MUST BE RETURNED UPON DEMAND.
© COPYRIGHT KAWNEER COMPANY, INC., 2015

- ⑤ INSTALL (3) 427218 JAMB MULLION "Z" CLIPS INTO THE JAMB MULLION HALF FURTHEST AWAY FROM JAMB SUBSTRATE, AT 1" FROM TOP AND BOTTOM OF MULLION AND AT CENTER OF THE HORIZONTAL NEAREST THE MIDDLE OF THE UNIT. ORIENT THE TOP AND CENTER CLIP SO THEY EXTEND TOWARDS THE BOTTOM OF THE MULLION. ORIENT THE BOTTOM CLIP SO IT EXTENDS TOWARDS THE TOP OF THE MULLION. APPLY A 028514 #10 X 3/8" B PHTF SCREW TO SECURE EACH CLIP IN PLACE. THE MULLION HALF CLOSEST TO THE JAMB SUBSTRATE WILL BE ATTACHED AT A LATER TIME. REFERENCE SHOP DRAWINGS FOR PROPER MULLION HALVES.

EXTERIOR EXTERIOR



A UNIT ASSEMBLY

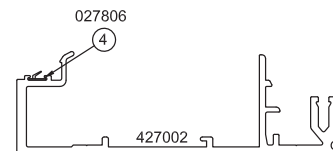
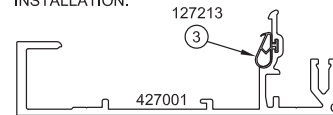
PLEASE NOTE: TYPICALLY UNITS ARE TO BE ASSEMBLED WITH THE 427002 MULLION HALF ON THE LEFT OF THE UNIT AND WITH THE 427001 MULLION HALF ON THE RIGHT OF THE UNIT (VIEWED FROM EXTERIOR OF UNIT). PLEASE REFER TO SHOP DRAWINGS FOR PROPER MULLION HALF REQUIRED AT LEFT AND RIGHT JAMB UNITS.

FOR PROPER FABRICATION & ERECTION, REFER TO THE FABRICATION & SHOP DRAWINGS.

- ① LAYOUT PARTS.
- ② CHECK THAT ALL PREPS HAVE BEEN APPLIED AND LOCATED IN THE PROPER POSITION PER APPROVED SHOP DRAWINGS.
- ③ SLIDE IN 127213 BULB GASKET AT THE MIDDLE LEG OF THE 427001 MULLION HALF. THE WIDE PART OF THE BULB SHOULD BE TOWARDS THE MULLION HALF SIDE WALL. GASKET TO RUN FULL LENGTH OF MULLION PLUS 3" EXTENDING OUT AT TOP. CRIMP IN PLACE AT TOP AND BOTTOM TO KEEP PART FROM SLIDING OUT DURING UNIT INSTALLATION.

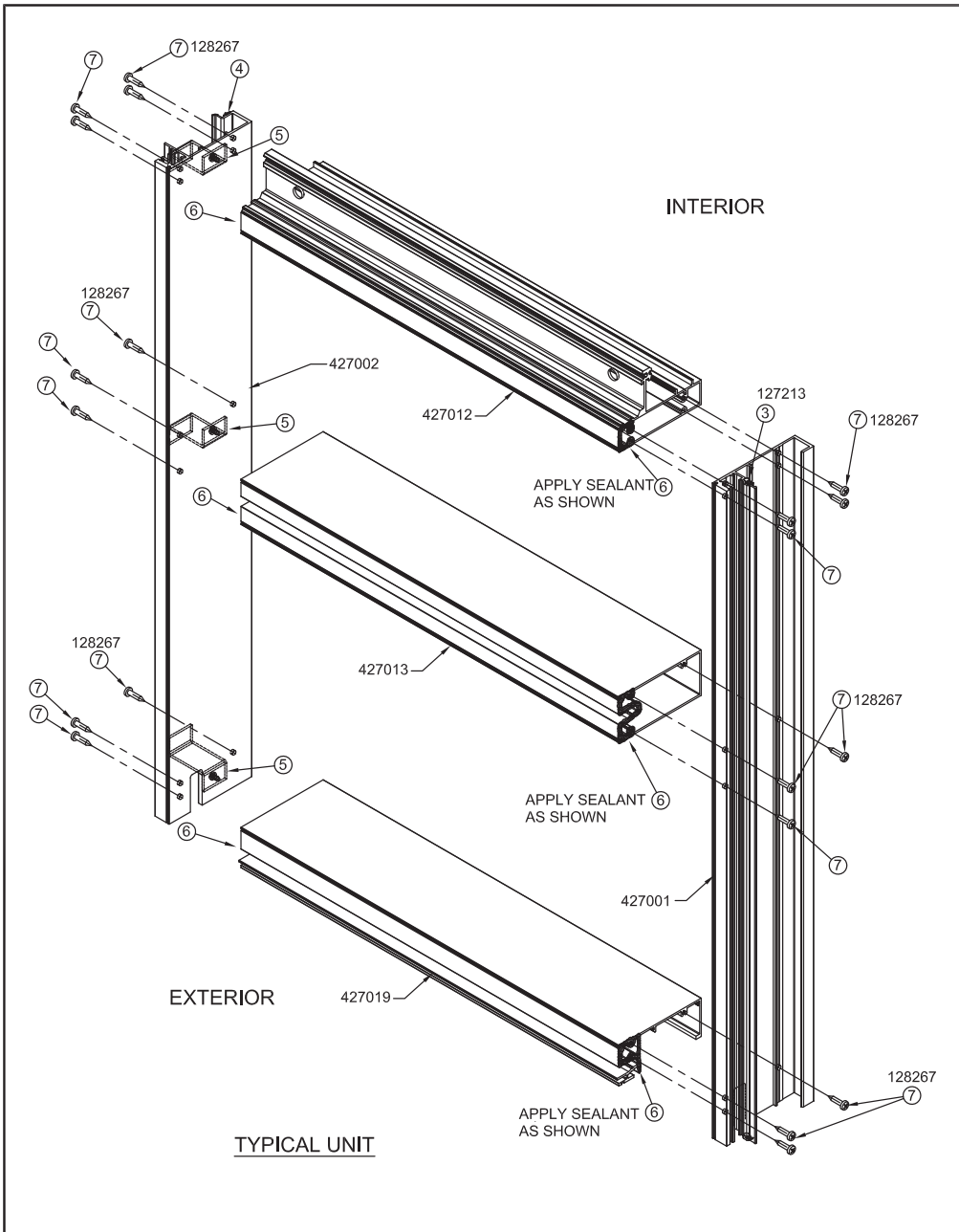
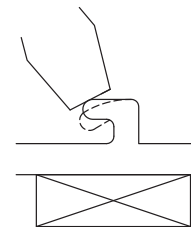
SPECIAL NOTE
DO NOT SPLICE THE 127213 GASKET. THIS WEATHERING WILL CREATE THE AIR AND WATER SEAL.

- ④ SLIDE IN 027806 BULB GASKET AT THE BACK OF THE 427002 MULLION HALF. GASKET TO RUN FULL LENGTH OF MULLION PLUS 3" EXTENDING OUT AT TOP. CRIMP IN PLACE AT TOP AND BOTTOM TO KEEP PART FROM SLIDING OUT DURING UNIT INSTALLATION.



CRIMP NOTE

DURING ALL CRIMPING OPERATIONS, BEND EXTENDED LEG ONLY. PROVIDE SUPPORT ON OPPOSITE SIDE TO PREVENT CRAZING OF VISIBLE ANODIZED OR PAINTED SURFACES.



TYPICAL UNIT



2500 UT
SSG
INSTALLATION
INSTRUCTIONS

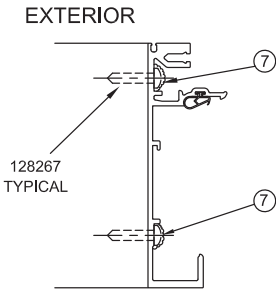
Product Engineering & Development

95524-005
06/30/15

REFERENCE TYPICAL UNIT DETAIL ON PREVIOUS SHEET FOR STEPS 6 THROUGH 8.

- ⑥ CLEAN, PRIME AND BUTTER BOTH ENDS OF HORIZONTALS WITH SEALANT PER TYP. UNIT DETAIL AND APPROVED SHOP DRAWINGS. **HEAD HORIZONTAL:** SEAL AT THE FRONT LEG AND 1" BACK AT TOP OF FRONT LEG. **INTERMEDIATE HORIZONTALS:** SEAL AT THE FRONT OF TUBE BACK TO 1ST SCREW SPLINES. **SILL HORIZONTAL:** SEAL AT THE FRONT LEG, 1ST INTERMEDIATE LEG AND 2" BACK ALONG TOP OF HORIZONTAL.

- ⑦ POSITION HORIZONTAL MEMBERS ALIGNING SPLINES WITH SCREW HOLES IN VERTICAL MEMBERS AND ASSEMBLE WITH 128267 #12 X 1" AB PHTF FASTENERS. WAX SCREWS PRIOR TO INSTALLATION. WHEN APPLYING OPPOSITE SIDE MULLION HALF, DO NOT TIGHTEN SCREWS UNTIL ALL HORIZONTALS HAVE BEEN APPLIED TO KEEP FROM WIPING OFF THE SEALANT WITH MULLION DURING HORIZONTAL INSTALLATION. WIPE OFF EXCESS SEALANT AT VISION AREAS. THOROUGHLY SEAL OVER ALL FASTENER HEADS.

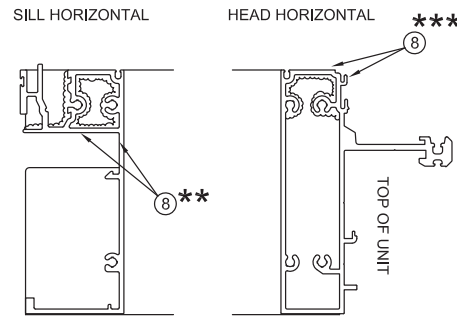


- ⑧ TOOL SEALANT. CHECK ALL SEALS AROUND HORIZONTALS TO VERTICALS AND APPLY SEALANT TO ANY AREAS WHERE SEALANT MAY HAVE BEEN WIPED OFF DURING ASSEMBLY.

**** NOTE:** TOOL EXCESS SEALANT FLAT.

***** NOTE:** TOOL EXCESS SEALANT FLAT AT TOP OF MULLIONS. KEEP SEAL OUT OF GROOVES.

EXTERIOR



- ⑨ INSTALL BACK PANS IN SPANDREL LITES AS REQUIRED. SEE APPROVED SHOP DRAWINGS. SHIM AND SEAL AS REQUIRED.
- ⑩ INSTALL INSULATION IN SPANDREL LITES AS REQUIRED. APPLY BACK-UP ANGLES, IMPALING PINS AND INSULATION PER MANUFACTURER'S RECOMMENDATIONS AND APPROVED SHOP DRAWINGS.
- ⑪ INSTALL STEEL OR ALUMINUM REINFORCING AS REQUIRED TO THE MULLION HALVES PER APPROVED SHOP DRAWINGS. SHIM AND FASTEN AS REQUIRED. COORDINATE INSTALLATION OF STEEL WITH ANCHOR BACK-UP INSTALLATION TO BE COMPLETED AFTER GLAZING.

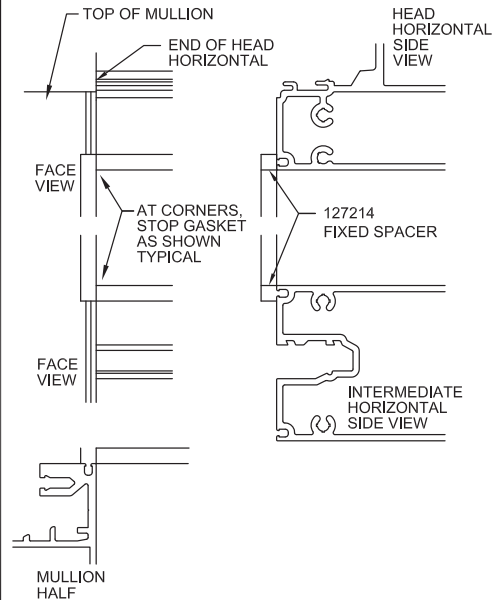
B GLAZING OF GLASS

- ① LAY THE UNIT ON A FLAT SURFACE WITH THE EXTERIOR FACING UP AND PREPARE ALUMINUM SURFACE. TABLE MUST BE FLAT AND MUST SUPPORT FRAME AT ALL LOCATIONS. A UNIT GLAZED IN A DEFLECTED POSITION WILL CAUSE INSTALLATION PROBLEMS.

CRITICAL: PREPARATION OF ALUMINUM AND GLASS SURFACES AND PROPER CURING TIME ARE TO BE EXACTLY AS OUTLINED BY THE SEALANT MANUFACTURER'S SPECIFICATIONS AND RECOMMENDATIONS.

THERE ARE TWO OPTIONS FOR GLAZING SPACERS. 127214 FIXED SPACER GASKET OR 127095 STRUCTURAL GLAZING SPACER TAPE CAN BE USED. BOTH OPTION APPLICATIONS ARE NOTED BELOW.

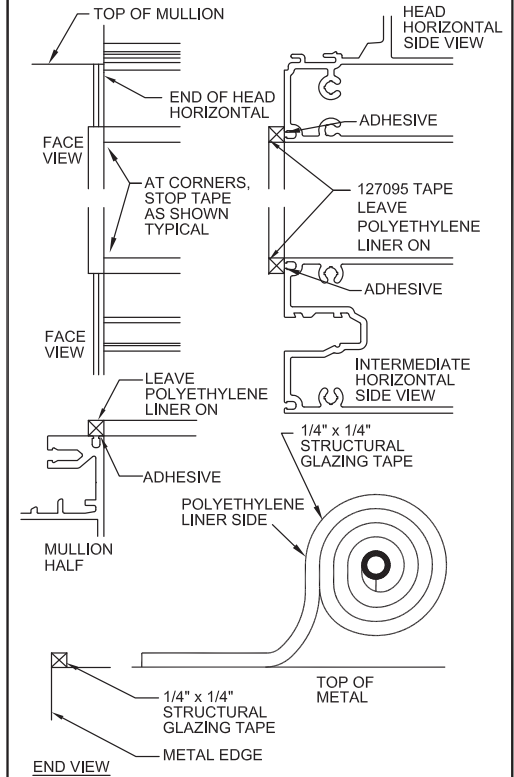
- ② **APPLYING FIXED SPACER GASKET**
INSTALL 127214 1/4" x 1/4" FIXED SPACER GASKET AROUND ALL LITES IN THE GLAZING REGLET AS SHOWN. OVERLAP ENDS AT CORNERS. SEE APPROVED SHOP DRAWINGS FOR LOCATIONS.



CONFIDENTIAL AND PROPRIETARY INFORMATION
KAWNEER COMPANY INC.

THESE DRAWINGS ARE THE SOLE AND EXCLUSIVE PROPERTY OF KAWNEER AND CONTAIN SENSITIVE, PRIVILEGED OR CONFIDENTIAL INFORMATION WHICH MAY BE USED ONLY FOR ITS BENEFIT. THE DISCLOSURE OF THESE DRAWINGS TO UNAUTHORIZED PERSONS IS STRICTLY PROHIBITED. THIS DOCUMENT AND ALL COPIES MUST BE RETURNED UPON DEMAND.
© COPYRIGHT KAWNEER COMPANY, INC., 2015

- ② **APPLYING SPACER TAPE**
INSTALL 127095 1/4" x 1/4" (2) SIDED ADHESIVE SPACER TAPE AROUND ALL LITES. SEE APPROVED SHOP DRAWINGS FOR LOCATIONS. AS A FINAL STEP, APPLY PRESSURE TO ENTIRE LENGTH OF SPACER TO ENSURE ADHESION. IF TAPE DOES NOT ADHERE, SILICONE MAY BLOW-OUT TAPE LEAVING EXCESS SILICONE AT THE INTERIOR SURFACE.



2500 UT
SSG
INSTALLATION
INSTRUCTIONS

Product Engineering & Development

95524-005
06/30/15

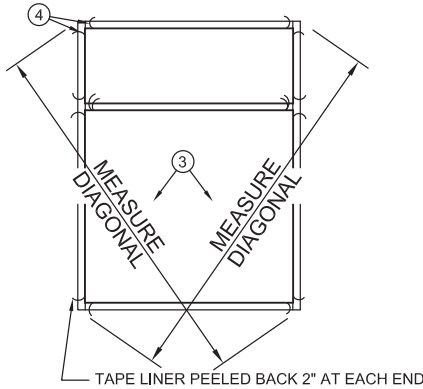
CRITICAL:

- ③ SECURE FRAME. CHECK SQUARENESS OF FRAME BY MEASURING DIAGONALS. THE MAXIMUM DIFFERENCE BETWEEN DIAGONALS IS 1/16". SIGHT DOWN MULLIONS TO MAKE SURE UNIT IS NOT BOWED.

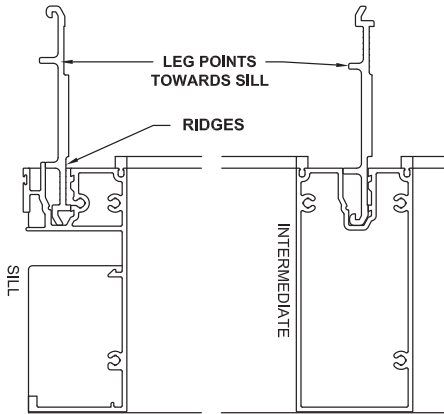
A UNIT GLAZED IN AN "OUT OF SQUARE" OR BOWED POSITION WILL CAUSE INSTALLATION PROBLEMS.

- ④ CLEAN GLASS PER SEALANT MANUFACTURER'S RECOMMENDATIONS, BOTH AT TAPE AND SILICONE CONTACT SURFACES.

AT 127095 SPACE TAPE APPLICATIONS PEEL BACK LINER OF STRUCTURAL GLAZING TAPE 2" AT EACH END JUST PRIOR TO SETTING GLASS.

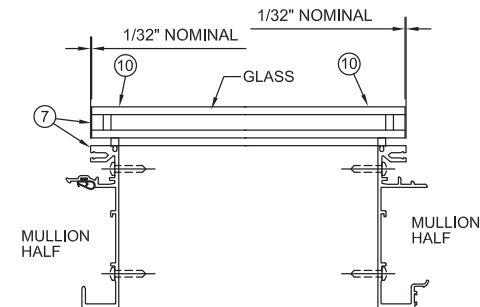
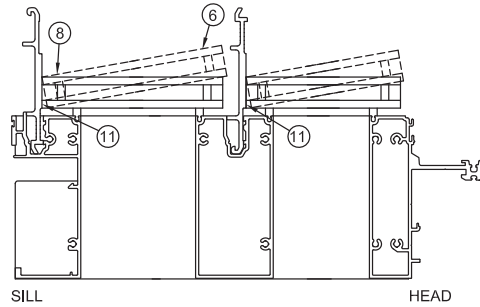


- ⑤ INSERT 427234 GLASS LOCATOR INTO SILL AND INTERMEDIATE HORIZONTAL AS SHOWN. NOTE PART ORIENTATION FOR PROPER GLASS LOCATION.

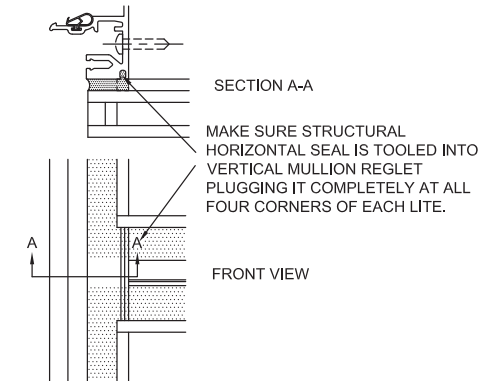
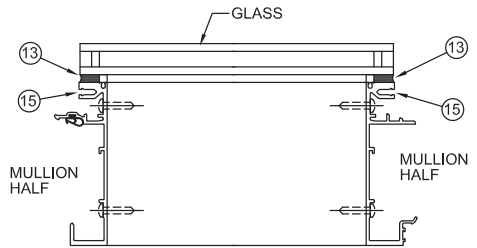
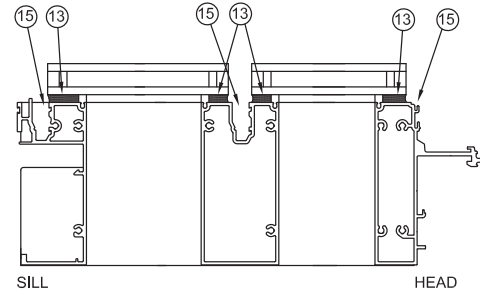


- ⑥ LINE UP GLASS AS SHOWN (SEE BELOW)
- ⑦ LOCATE GLASS WIDTHWISE ALONG EDGE OF MULLION NOSE.
- ⑧ INSTALL GLASS BY PUSHING BOTTOM EDGE AGAINST GLASS LOCATOR AND LOWER INTO PLACE.
- ⑨ AT SPACER TAPE APPLICATIONS WHEN GLASS IS SQUARED AND CENTERED, PRESS DOWN ON CORNERS TO OBTAIN ADHESION, REMOVE REMAINING POLYETHYLENE LINER FROM TAPE.
- ⑩ AT SPACER TAPE APPLICATIONS APPLY PRESSURE ALONG ALL (4) SIDES OF GLASS BEING SURE GLASS COMES INTO CONTINUOUS CONTACT WITH ADHESIVE SPACER.
- ⑪ REMOVE ALL GLASS LOCATORS FOR RE-USE.

REFERENCE SHOP DETAILS AND GLAZING DETAILS FOR NON TYPICAL CONDITIONS.



- ⑫ CHECK TO INSURE THAT GLASS AND METAL SURFACES ARE CLEAN AND PREPARED PER SEALANT MANUFACTURER'S SPECIFICATIONS AND RECOMMENDATIONS.
- ⑬ APPLY STRUCTURAL SILICONE SEALANT COMPLETELY FILLING JOINT.
- ⑭ TOOL SEALANT. TOOL EXCESS SEALANT FLAT OVER HORIZONTAL TO VERTICAL JOINTS.
- ⑮ CLEAN OUT ANY EXCESS SEALANT IN HORIZONTAL GROOVE AND ENGAGEMENT AREAS. POCKETS AREAS CAN BE PLUGGED OR TAPED TO KEEP SEALANT OUT PRIOR TO APPLYING SILICONE IF NECESSARY.

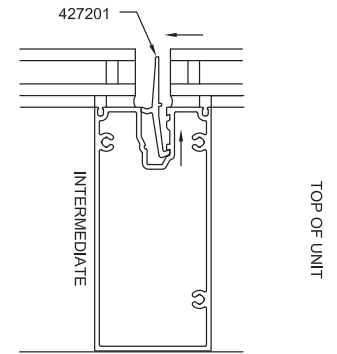


CONFIDENTIAL AND PROPRIETARY INFORMATION
KAWNEER COMPANY INC.

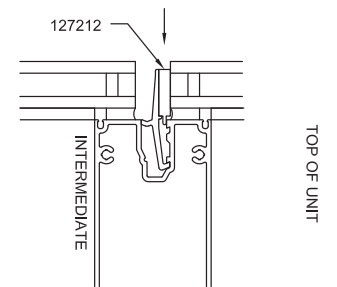
THESE DRAWINGS ARE THE SOLE AND EXCLUSIVE PROPERTY OF KAWNEER AND CONTAIN SENSITIVE, PRIVILEGED OR CONFIDENTIAL INFORMATION WHICH MAY BE USED ONLY FOR ITS BENEFIT. THE DISCLOSURE OF THESE DRAWINGS TO UNAUTHORIZED PERSONS IS STRICTLY PROHIBITED. THIS DOCUMENT AND ALL COPIES MUST BE RETURNED UPON DEMAND.
© COPYRIGHT KAWNEER COMPANY, INC., 2015

C APPLYING MISC. PARTS AND GASKETS

- ① INSERT (2) 427201 SSG GLASS CHAIRS INTO INTERMEDIATE HORIZONTALS. APPLY CHAIRS AT 1/4 POINTS OR 1/8 POINTS IN POSITION AS SHOWN. INSERT PART TO BOTTOM OF GROOVE. PUSH DOWN AND PULL UP PART AT SAME TIME TO POSITION INTO GROOVE IN THE BACK OF THE HORIZONTAL POCKET.



- ② APPLY A 127212 SETTING BLOCK ON EACH SSG GLASS CHAIR IN INTERMEDIATE HORIZONTALS AS SHOWN. THE EDGE OF THE BLOCK INDEXES ON THE NUB ON CHAIR.

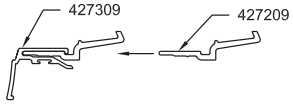


2500 UT
SSG
INSTALLATION
INSTRUCTIONS

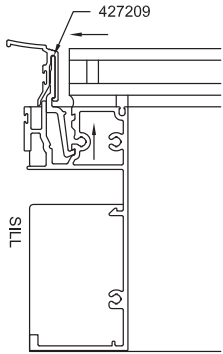
Product Engineering & Development

95524-005
06/30/15

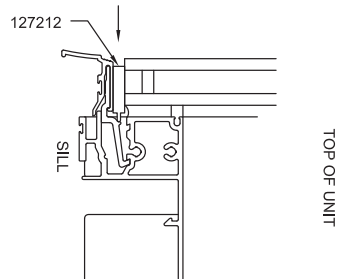
- 3 FOR SILL HORIZONTAL, FIRST SNAP IN (3) 427209 SSG SILL GLASS CHAIRS INTO 427309 SSG THERMAL FACE GASKET. LOCATE CHAIRS AT 1/4 POINTS OR 1/8 POINTS OF HORIZONTAL DLO AS SHOWN AND APPLY THE 3RD 427209 AT THE CENTER.



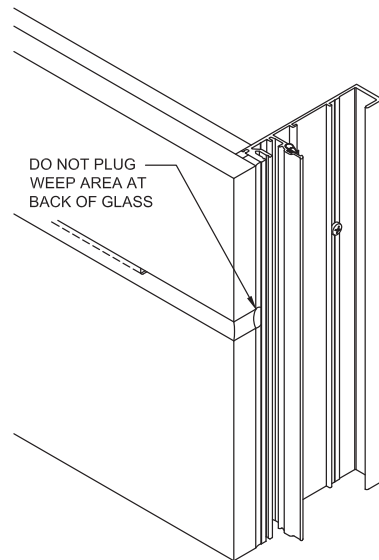
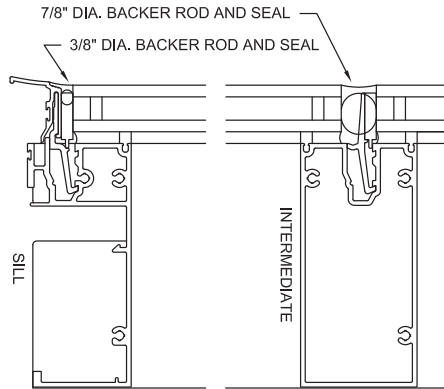
- 4 INSERT 427309 SSG THERMAL FACE AND 427209 SSG SILL GLASS CHAIRS INTO SILL HORIZONTAL. DOUBLE CHECK CHAIR LOCATIONS AND ADJUST AS NEEDED. INSERT CHAIR PARTS TO BOTTOM OF GROOVE. PUSH DOWN AND PULL UP PART AT SAME TIME TO POSITION BACK OF CHAIRS INTO GROOVE IN THE BACK OF THE HORIZONTAL POCKET. CENTER ON UNIT TYPICALLY. AT JAMBS, THE END OF THE 427309 PART ALIGNS WITH PERIMETER SIDE OF JAMB MULLION.



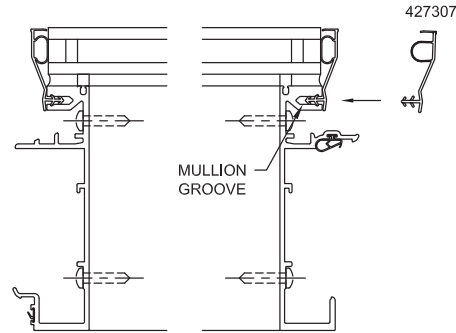
- 5 APPLY A 127212 SETTING BLOCK ON EACH SSG GLASS CHAIR LOCATION AT THE 1/4 OR 1/8 POINTS ONLY IN SILL HORIZONTALS AS SHOWN. THE BACK OF THE BLOCK INDEXES ON THE CHAIR.



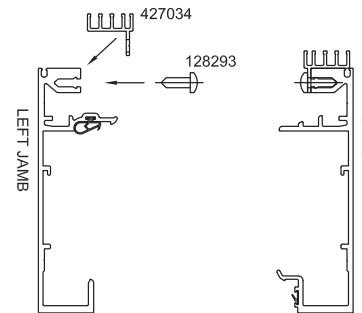
- 6 APPLY WEATHER SEALS AT HORIZONTALS AS SHOWN. CHECK TO INSURE THAT GLASS AND METAL SURFACES ARE CLEAN AND PREPARED PER SEALANT MANUFACTURER'S RECOMMENDATIONS. RETURN SEALANT AT ENDS TO BACK OF GLASS. NOTE: AT ALL WEATHERSEAL ENDS, SQUARE OFF SEALANT WITH SIDES OF GLASS TO FORM A FLAT VERTICAL LINE WITH EDGE OF GLASS. TOOL SEALANT.



- 7 APPLY 427307 SSG VERTICAL RAIN SCREEN TO RIGHT AND LEFT SIDES OF UNIT TYPICALLY. APPLY SEALANT IN MULLION GROOVE IN A FEW LOCATIONS TO KEEP PART FROM WALKING. LOCATE TOP OF PART 1/4\"/>



- 8 AT LOOSE JAMB MULLION HALVES, APPLY 427034 POCKET ADAPTER AS SHOWN, LOCATE AT TOP OF MULLION AND FIX WITH 128293 #12 X 5/8\"/>



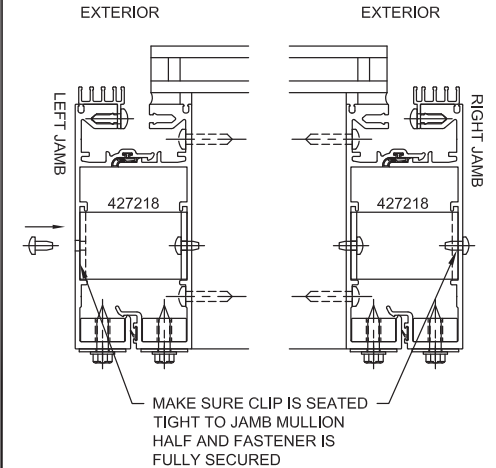
CONFIDENTIAL AND PROPRIETARY INFORMATION
KAWNEER COMPANY INC.

THESE DRAWINGS ARE THE SOLE AND EXCLUSIVE PROPERTY OF KAWNEER AND CONTAIN SENSITIVE, PRIVILEGED OR CONFIDENTIAL INFORMATION WHICH MAY BE USED ONLY FOR ITS BENEFIT. THE DISCLOSURE OF THESE DRAWINGS TO UNAUTHORIZED PERSONS IS STRICTLY PROHIBITED. THIS DOCUMENT AND ALL COPIES MUST BE RETURNED UPON DEMAND.
© COPYRIGHT KAWNEER COMPANY, INC., 2015

- 9 APPLY LOOSE JAMB MULLION HALVES TO UNITS.

NOTE: APPLY ANCHOR BACK-UP BARS PRIOR TO THIS STEP FOR JAMB UNITS ONLY. REFERENCE SHEET 7, STEP 15. SHIM UNIT TO KEEP FLAT ON TABLE.

ALIGN MULLION HALVES AND SECURE IN PLACE. MATCH DRILL (1) .154\"/>



2500 UT
SSG
INSTALLATION
INSTRUCTIONS

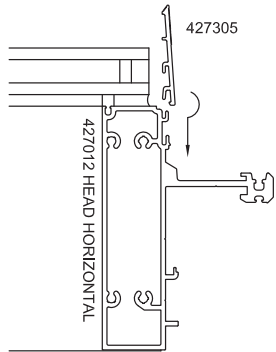
Product Engineering & Development

95524-005
06/30/15

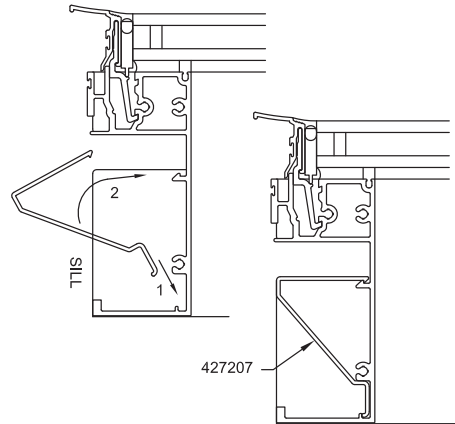
CONFIDENTIAL AND PROPRIETARY INFORMATION
KAWNEER COMPANY INC.

THESE DRAWINGS ARE THE SOLE AND EXCLUSIVE PROPERTY OF KAWNEER AND CONTAIN SENSITIVE, PRIVILEGED OR CONFIDENTIAL INFORMATION WHICH MAY BE USED ONLY FOR ITS BENEFIT. THE DISCLOSURE OF THESE DRAWINGS TO UNAUTHORIZED PERSONS IS STRICTLY PROHIBITED. THIS DOCUMENT AND ALL COPIES MUST BE RETURNED UPON DEMAND.
© COPYRIGHT KAWNEER COMPANY, INC., 2015

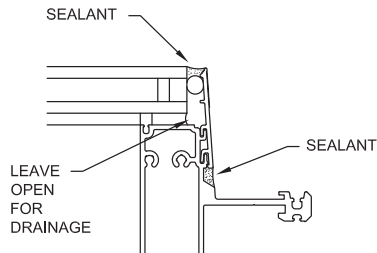
- 10 APPLY 427305 HEAD GLASS EDGE PROTECTOR. INSERT PART INTO GROOVES IN HEAD HORIZONTAL. CENTER PART ON UNIT. EDGE OF PART SHOULD BE 1/4" BEYOND EDGE OF GLASS. AT JAMBS, EDGE PROTECTOR WILL EXTEND COMPLETELY OVER MULLION TO SIDE OF JAMB MULLION HALF.



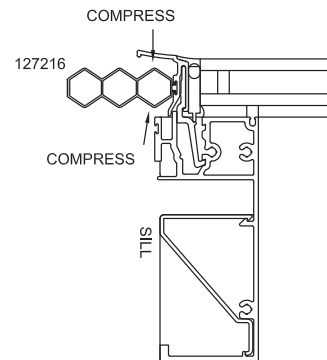
- 12 APPLY 427207 MIDSPAN DEFLECTION CLIP IN SILL HORIZONTAL AT UNITS WITH A UNIT REFERENCE WIDTH LARGER THAN 48". INSERT BACK EDGE IN GROOVE AT BACK OF SILL HORIZONTAL AS SHOWN AND SNAP IN PLACE. LOCATE CLIP AT CENTER OF SILL HORIZONTAL.



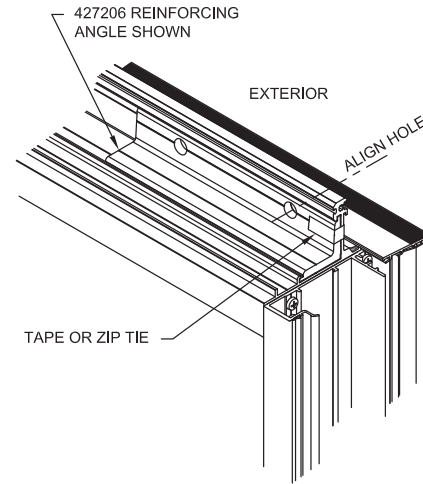
- 11 INSERT 3/8" DIA. SOFT BACKER ROD BETWEEN GLASS AND EDGE PROTECTOR AND SEAL ACROSS FACE WITH SEALANT. CONTINUE BACKER ROD AND SEAL ACROSS TOP OF 427307 SSG VERTICAL RAIN SCREEN GASKET. ALSO APPLY SEALANT AT BACK OF EDGE PROTECTOR TO HORIZONTAL OVER TO EACH END OF THE HORIZONTAL. TOOL SEALANT FLAT.



- 13 SLIDE IN 127216 HORIZONTAL STACK RAIN SCREEN GASKET IN THE BOTTOM OF THE SILL HORIZONTAL SSG THERMAL FACE GASKET. COMPRESSING UPPER CAVITY OF GASKET DURING INSTALLATION WILL ALLOW PART TO SLIDE EASIER. APPLY A SMALL AMOUNT OF SEALANT AT A FEW LOCATIONS IN REGLET JUST PRIOR TO INSERTING GASKET TO SECURE IN PLACE. CENTER PART ON THERMAL FACE GASKET. AT JAMBS THE GASKET WILL EXTEND TO AND ALIGN WITH SIDE OF JAMB MULLION.



- 14 APPLY REINFORCING ANGLES AT HEAD. AS VIEWED FROM THE EXTERIOR, AT TYPICAL UNITS, APPLY (1) 427206 REINFORCING ANGLE (9" LONG) IN THE LEFT END OF THE HEAD HORIZONTAL AND A 427222 HOISTING ANGLE (4" LONG) IN THE RIGHT END. TAPE THE PARTS IN PLACE MAKING SURE THE HOLES ALIGN WITH HOLES IN HEAD HORIZONTAL. 427222 HOISTING ANGLES WILL BE REMOVED AFTER UNITS ARE HOISTED IN PLACE AND CAN BE REUSED ON FUTURE UNITS AS NEEDED. DO NOT DISCARD.



AS VIEWED FROM THE EXTERIOR, AT LEFT JAMB UNIT, APPLY (1) 427223 JAMB REINFORCING ANGLE (6" LONG) IN THE LEFT SIDE (JAMB SIDE) OF THE HEAD HORIZONTAL AND A 427222 HOISTING ANGLE (4" LONG) IN THE RIGHT END. TAPE THE PARTS IN PLACE MAKING SURE THE HOLES ALIGN WITH HOLES IN HEAD HORIZONTAL.

AS VIEWED FROM THE EXTERIOR, AT RIGHT JAMB UNIT, APPLY (1) 427206 REINFORCING ANGLE (9" LONG) IN THE LEFT SIDE OF THE HEAD HORIZONTAL AND A 427223 JAMB REINFORCING ANGLE (6" LONG) IN THE RIGHT END (JAMB SIDE). TAPE THE PARTS IN PLACE MAKING SURE THE HOLES ALIGN WITH HOLES IN HEAD HORIZONTAL.



2500 UT
SSG
INSTALLATION
INSTRUCTIONS

Product Engineering & Development

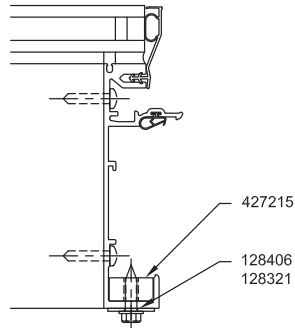
95524-005
06/30/15

427972 SHEET 06 OF 13

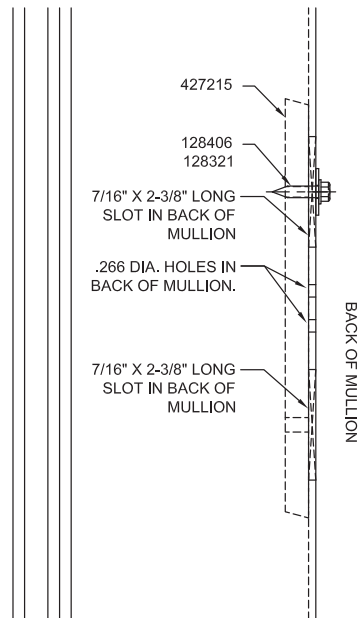
CONFIDENTIAL AND PROPRIETARY INFORMATION
KAWNEER COMPANY INC.

THESE DRAWINGS ARE THE SOLE AND EXCLUSIVE PROPERTY OF KAWNEER AND CONTAIN SENSITIVE, PRIVILEGED OR CONFIDENTIAL INFORMATION WHICH MAY BE USED ONLY FOR ITS BENEFIT. THE DISCLOSURE OF THESE DRAWINGS TO UNAUTHORIZED PERSONS IS STRICTLY PROHIBITED. THIS DOCUMENT AND ALL COPIES MUST BE RETURNED UPON DEMAND.
© COPYRIGHT KAWNEER COMPANY, INC., 2015

15 APPLY 427215 ANCHOR BACK-UP BAR AT INSIDE BACK OF VERTICALS. INSERT BAR SO THE SMALLER .228 DIA. HOLE IS TOWARDS THE TOP OF THE UNIT. LIGHTLY SECURE BAR IN PLACE AT UPPER SLOT WITH (1) 128406 1/4 X 1" AB HWHTF AND 128321 FLAT WASHER. THIS SCREW WILL BE LOOSENED IN FIELD TO ADJUST BAR AS NEEDED FOR ANCHORING TO BUILDING. REFERENCE APPROVED SHOP DRAWINGS FOR LOCATIONS.



TOP OF UNIT



16 STORE UNITS HORIZONTALLY UNTIL SEALANT HAS CURED PER THE SEALANT MANUFACTURER'S RECOMMENDATIONS.

UNITS ARE NOT TO BE ERECTED UNTIL AFTER SEALANT MANUFACTURER'S RECOMMENDED CURING TIME.



2500 UT
SSG
INSTALLATION
INSTRUCTIONS

Product Engineering & Development

95524-005
06/30/15

427972 SHEET 07 OF 13

D CHECK OPENINGS

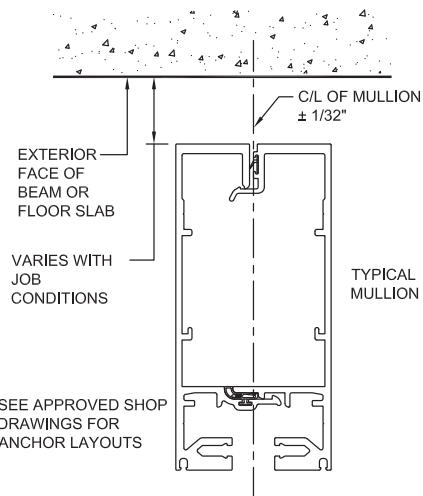
ELEVATIONS AND SLABS MUST BE WITHIN ADJUSTMENT OF ANCHORING SYSTEM. SEE APPROVED SHOP DRAWINGS FOR ALLOWABLE ADJUSTMENT.

ANCHORING SURFACES OF PERIMETER CONSTRUCTION MUST BE LEVEL AND PLUMB WITHIN THE ADJUSTMENT LIMITS OF THE HEAD, SILL AND JAMB. SEE APPROVED SHOP DRAWINGS FOR ALLOWABLE ADJUSTMENT.

E LAY OUT ANCHOR AND MULLION CENTERLINES

USE WALL LINES ESTABLISHED BY THE GENERAL CONTRACTOR. ON EACH FLOOR, LAY OUT A REFERENCE LINE TO ESTABLISH IN AND OUT WALL LOCATIONS.

USE COLUMNS CENTER LINES ESTABLISHED BY THE GENERAL CONTRACTOR. ON EACH FLOOR, LAY OUT MULLION CENTER LINES AND ANCHOR CENTER LINES.

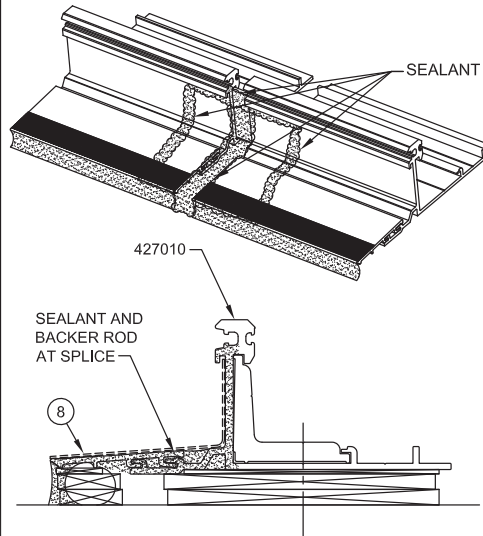


F APPLICATION OF STARTER TRACK

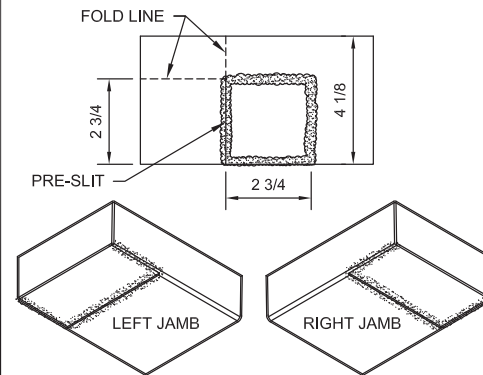
- LOCATE THE BACK OF THE CURTAIN WALL SYSTEM (BACK OF THE VERTICAL MULLIONS) AND MARK LOCATIONS. NOTE: THE BACK OF THE 427010 STARTER TRACK IS FLUSH WITH THE BACK OF THE MULLIONS.

- LOCATE THE CENTERLINE OF THE VERTICAL MULLIONS FROM ESTABLISHED COLUMN LINES AND MARK THE LOCATIONS.
 - SLIDE IN THE 427212 REINFORCING ANGLES INTO THE STARTER TRACK. IF PREPPED FOR PERIMETER FASTENERS, REFERENCE APPROVED SHOP DRAWINGS FOR PROPER ANGLES AND LOCATIONS. LOCATE AN ANGLE AT ALL MULLION CENTERLINES AND JAMBS. CRIMP OR ADD SEALANT TO KEEP IN PLACE. SEE BELOW.
 - POSITION THE STARTER TRACK AND SHIM AS NEEDED TO PLACE IT AT THE PROPER HEIGHT (MEASURED FROM ESTABLISHED BENCHMARK). THE SHIM STACK AND PERIMETER ANCHORS ARE TO BE LOCATED PER APPROVED SHOP DRAWINGS. THE STARTER TRACK MUST BE LEVEL AND STRAIGHT.
 - FIELD MATCH DRILL BUILDING CONDITION FOR PERIMETER FASTENERS. LOCATE FASTENERS FRONT TO BACK WHERE FASTENER HEAD WILL NOT INTERFERE WITH UNIT SILL HORIZONTAL. WHEN UNIT IS INSTALLED, APPLY FASTENERS AND SEAL OVER ALL FASTENER HEADS. TOOL SEALANT.
 - APPLY 427305 EDGE PROTECTOR. INSERT PART INTO GROOVES IN STARTER TRACK. ALIGN WITH END OF STARTER TRACK AND ALLOW 1/4" WIDE SPLICE JOINTS. SHIM AS NEEDED.
 - INSERT SOFT BACKER ROD BETWEEN PARTS AND BUILDING SUBSTRATE AT EXTERIOR AND SEAL ACROSS FACE. ALSO APPLY SEALANT AT BACK OF EDGE PROTECTOR TO STARTER TRACK ALONG THE FULL LENGTH OF PARTS PER APPROVED SHOP DRAWINGS. TOOL SEALANT FLAT AT BACK OF EDGE PROTECTOR. TOOL SEALANT AT PERIMETER.
-

- APPLY SEALANT AT SPLICES AS SHOWN AND INSTALL 127096 (4" WIDE x 4 1/8" LONG) SILICONE SPLICE SHEET IN A BED OF SEALANT. SEAL AND TOOL AROUND SPLICE SHEET. ALL SPLICE JOINTS ARE TO BE SEALED FROM THE FRONT OF THE STARTER TRACK TO THE TOP OF THE UPTURNED LEG. COMPLETE NEXT STEP BEFORE SEALANT SETS UP.



- FOR JAMB SLEEVES 127229, APPLY SEALANT AND FOLD SILICONE SHEET PARTS TO CREATE SILICONE BOOT. SAME PART, FOLDED OPPOSITE AS SHOWN, WILL BE USED AT THE RIGHT JAMB. TOOL SEALANT AROUND EDGES TO MAKE PART WATERTIGHT.



427972 SHEET 08 OF 13

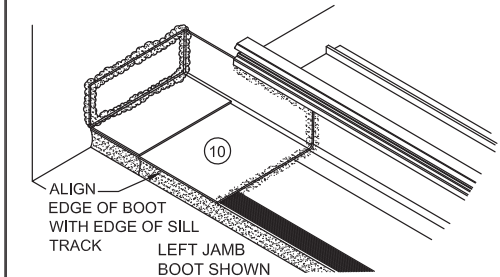
CONFIDENTIAL AND PROPRIETARY INFORMATION
KAWNEER COMPANY INC.

THESE DRAWINGS ARE THE SOLE AND EXCLUSIVE PROPERTY OF KAWNEER AND CONTAIN SENSITIVE, PRIVILEGED OR CONFIDENTIAL INFORMATION WHICH MAY BE USED ONLY FOR ITS BENEFIT. THE DISCLOSURE OF THESE DRAWINGS TO UNAUTHORIZED PERSONS IS STRICTLY PROHIBITED. THIS DOCUMENT AND ALL COPIES MUST BE RETURNED UPON DEMAND.
© COPYRIGHT KAWNEER COMPANY, INC., 2015

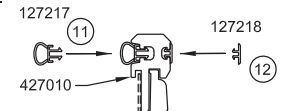
- AT JAMBS, FOLLOW SAME PROCEDURE AS NOTED IN STEP 8 BUT USE 127229 BOOT NOTED IN STEP 9.

ALSO APPLY SEALANT ON END OF BOOT THAT WILL CONTACT BUILDING SUBSTRATE. SET SILICONE BOOT IN A CONTINUOUS BED OF SEALANT, PRESS FIRMLY AROUND EDGES AND TUCK INTO GROOVE AT TOP UNDER GASKET REGLET. THE BOOT SHOULD EXTEND OVER TO BUILDING SUBSTRATE. APPLY SILICONE AROUND EDGES AS REQUIRED AND TOOL SEALANT FLAT. CONTINUE PERIMETER SEAL BELOW BOOT TO JAMB.

NOTE: HOLD LOW PROFILE AND MINIMIZE SEALANT BUILD UP OR DAMMING OF SEALANT AT TOP OF SILICONE SHEET.



- PUSH-IN 127217 AIR SEAL GASKET CONTINUOUS IN THE UPTURNED LEG OF THE STARTER TRACK. GASKET SHOULD NEVER BE "STRETCHED TO FIT". BUTT TOGETHER WHERE SPLICED AND SEAL ENDS.
- SNAP IN (1) 127218 ISOLATOR CLIP IN THE UPTURNED LEG OF THE STARTER TRACK AT MULLION CENTERLINES. AT UNITS WITH A UNIT REFERENCE WIDTH LARGER THAN 48", APPLY (1) CLIP AT DLO CENTER LOCATION.



- INSPECT THE SPLICE JOINTS FOR ANY GAP WHERE AIR OR WATER MAY PENETRATE. SEAL COMPLETELY WATERTIGHT. SEAL AROUND GASKET AT SPLICES AND TIE TO SPLICE SHEET SHOWN IN STEP 8.

KAWNEER

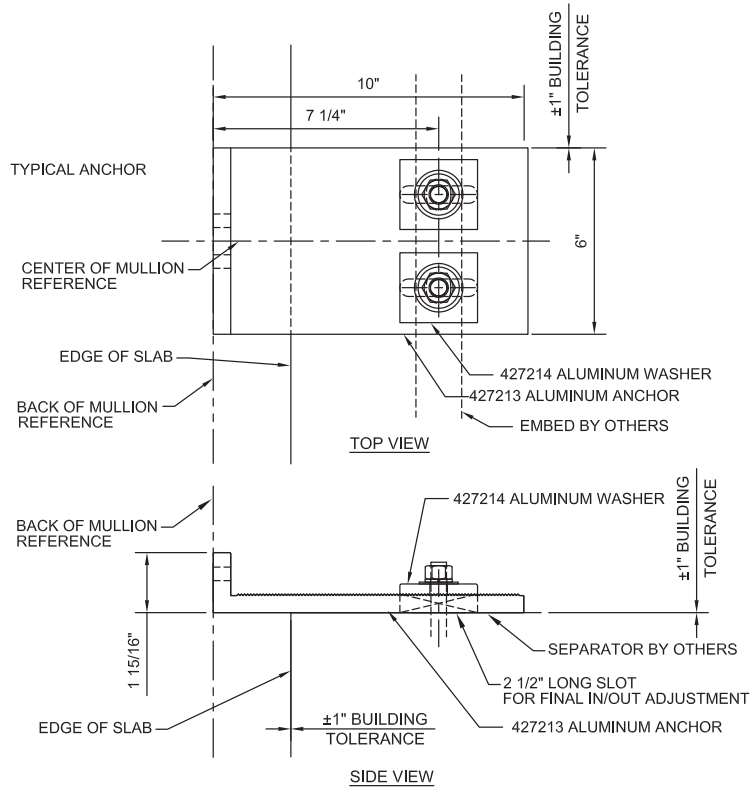
2500 UT
SSG
INSTALLATION
INSTRUCTIONS

Product Engineering & Development

95524-005
06/30/15

427972 SHEET 08 OF 13

G ERECTION OF TOP OF SLAB
ANCHORS WHERE REQUIRED



① SEE APPROVED SHOP DRAWINGS FOR ANCHOR TYPES AND LOCATIONS.

② LOCATE THE CENTERLINE OF THE VERTICAL MULLIONS FROM ESTABLISHED COLUMN LINES AND MARK THE LOCATIONS.

NOTE: ALUMINUM ANCHORS MUST BE SEPARATED FROM CONCRETE AND STEEL BUILDING SUBSTRATES.

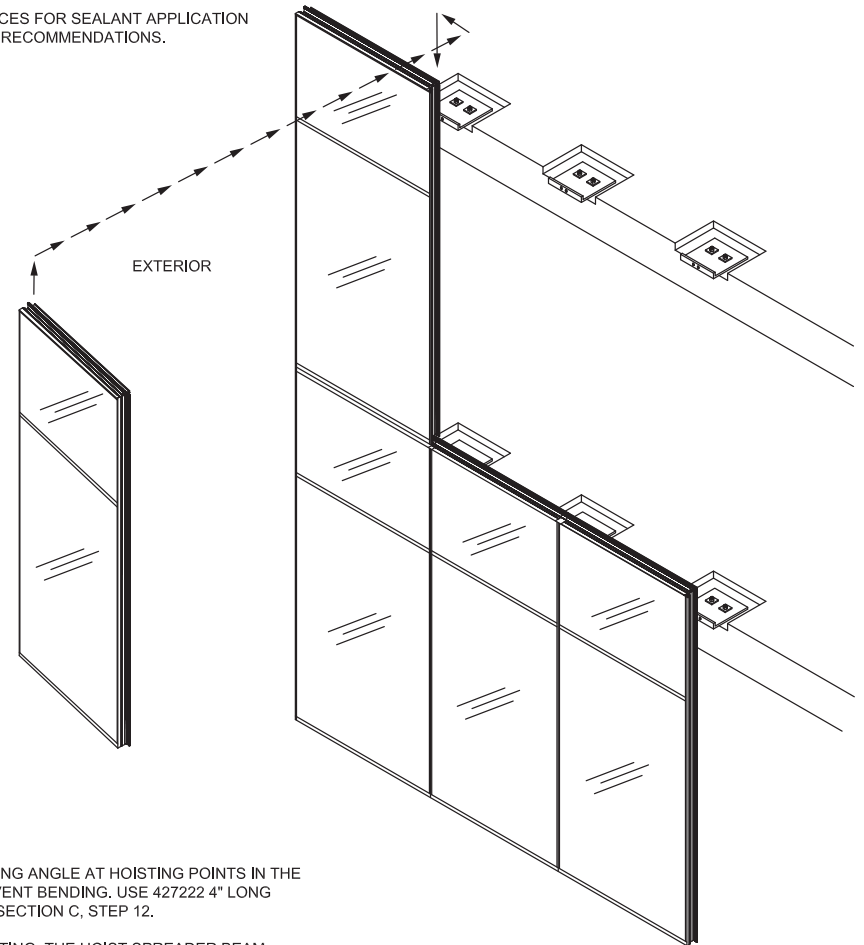
③ LOCATE CENTERLINE OF ALUMINUM ANCHOR AND MARK FOR CENTERLINE OF MULLION. ALSO LOCATE ANCHOR AT IN/OUT POSITION. APPLY ALUMINUM WASHER AND ATTACH TO BUILDING SUBSTRATE. FINAL IN/OUT ADJUSTMENT CAN BE MADE PRIOR TO TIGHTENING IN PLACE.

④ TIGHTEN BOLTS DOWN AFTER FINAL ADJUSTMENT.

H CURTAIN WALL UNIT INSTALLATION

NOTE: ALL CURTAIN WALL INSTALLATION WILL START ON THE LEFT AND PROCEED TO THE RIGHT AND FROM BOTTOM TO TOP, VIEWED FROM THE EXTERIOR OF THE BUILDING. REFERENCE THE KEY PLANS SHOWN IN APPROVED SHOP DRAWINGS FOR STARTING LOCATIONS.

CLEAN AND PREPARE ALL SURFACES FOR SEALANT APPLICATION PER SEALANT MANUFACTURER'S RECOMMENDATIONS.



ALL UNITS REQUIRE A REINFORCING ANGLE AT HOISTING POINTS IN THE UNIT HEAD HORIZONTAL TO PREVENT BENDING. USE 427222 4" LONG TEMPORARY PART. REFERENCE SECTION C, STEP 12.

INSPECT FRAMES PRIOR TO HOISTING. THE HOIST SPREADER BEAM CHAINS SHOULD BE SPACED APART THE SAME LENGTH AS THE DISTANCE BETWEEN HOISTING HOLES IN HEAD HORIZONTAL. THE MOVEMENT OF THE FRAME MUST BE CONTROLLED AS IT IS BEING HOISTED. IT MUST NOT BE ALLOWED TO SWING OR SPIN. MAXIMUM UNIT WEIGHT TO BE LESS THAN 600 LBS. FOR HOISTING.

427972 SHEET 09 OF 13

CONFIDENTIAL AND PROPRIETARY INFORMATION
KAWNEER COMPANY INC.

THESE DRAWINGS ARE THE SOLE AND EXCLUSIVE PROPERTY OF KAWNEER AND CONTAIN SENSITIVE, PRIVILEGED OR CONFIDENTIAL INFORMATION WHICH MAY BE USED ONLY FOR ITS BENEFIT. THE DISCLOSURE OF THESE DRAWINGS TO UNAUTHORIZED PERSONS IS STRICTLY PROHIBITED. THIS DOCUMENT AND ALL COPIES MUST BE RETURNED UPON DEMAND.
© COPYRIGHT KAWNEER COMPANY, INC., 2015

KAWNEER

2500 UT
SSG
INSTALLATION
INSTRUCTIONS

Product Engineering & Development

95524-005
06/30/15

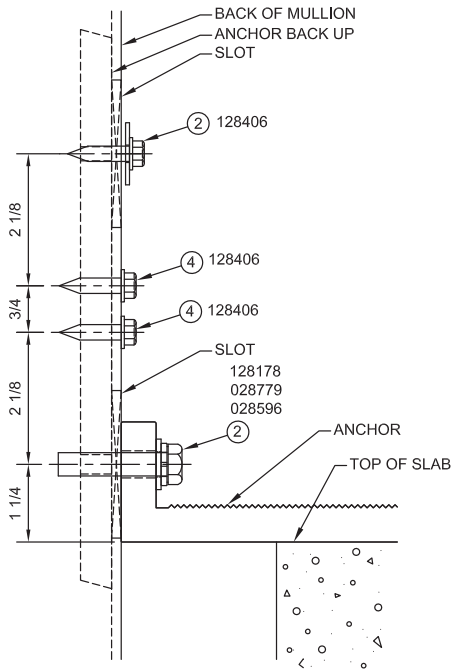
427972 SHEET 09 OF 13

① MAKE SURE GASKETS HAVE NOT SHIFTED DURING SHIPPING AND ADJUST PRIOR TO INSTALLATION. INSTALL THE FIRST UNIT (FROM LEFT TO RIGHT) BY LIFTING IT OVER THE STARTER TRACK AND LOWERING IT DOWN TO ENGAGE THE HORIZONTAL AT THE BOTTOM.

② LOOSEN 128406 SCREW AT BACK OF MULLION AT ANCHOR LOCATIONS AND ADJUST BACK-UP BAR TO PROPER HEIGHT TO BOLT UNIT TO ANCHOR AT LOWER SLOT. APPLY 128178 3/8-16 X 1 3/4" HCS, 028779 LOCK WASHER AND 028596 FLAT WASHER THROUGH ANCHOR AND FIX TO THREADED HOLE IN BACK-UP BAR IN MULLION HALF.

③ ADJUST UNIT HEIGHT TO MAKE SURE THAT IT IS LEVEL, PLUMB AND AT THE CORRECT HEIGHT AND TIGHTEN BOLT AND SCREW. AT NOMINAL POSITION, TYPICAL SPACE AT BACK OF EXPANSION HORIZONTAL BETWEEN MULLION HALVES AND VERY BACK TOP SURFACE OF STARTER TRACK IS 1 3/32". SHIM BETWEEN TOP OF STARTER TRACK AND BOTTOM OF MULLION HALVES AS NEEDED. REMOVE SHIMS AFTER SECURING TO ANCHORS.

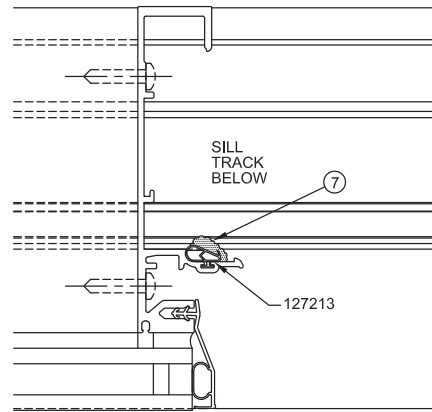
④ AT ANCHOR LOCATION, MATCH DRILL .228 DIA. [#1 DRILL] HOLES IN ANCHOR BACK UP AT THE (2) HOLE LOCATIONS BETWEEN SCREW SLOT AND BOLT SLOT. APPLY (2) 128406 1/4 X 1" AB HWHTF FASTENERS IN EACH MULLION HALF TO DEAD LOAD UNIT IN PLACE.



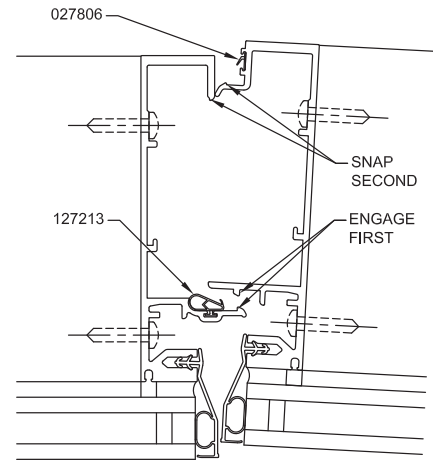
⑤ REMOVE 427222 4" LONG REINFORCING ANGLE FROM THE RIGHT SIDE OF THE HEAD HORIZONTAL USED FOR HOISTING.

⑥ BLOCK BETWEEN JAMB CONDITION AND FIRST UNIT TO PREVENT MOVEMENT DURING INSTALLATION OF SECOND UNIT.

⑦ JUST PRIOR TO INSTALLING NEXT UNIT, APPLY SEALANT TO THE INTERSECTION OF 127217 HORIZONTAL AIR/WATER SEAL GASKET AND 127213 VERTICAL AIR / WATER SEAL GASKET.

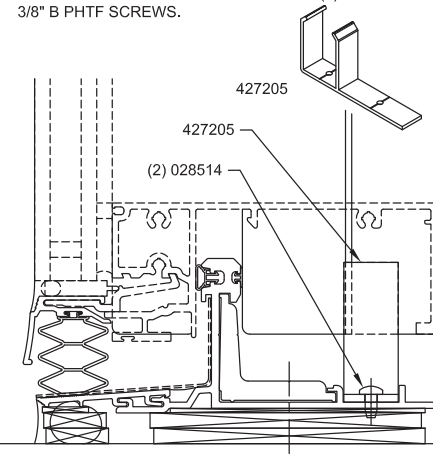


⑧ INSTALL THE NEXT UNIT BY LIFTING UNIT UP TO CLEAR THE UPTURNED LEG AT THE STARTER TRACK. START UNIT SLIGHTLY BACK OF INSTALLED UNIT AND KEEP UNIT AT A SLIGHT ANGLE (~3°) DURING INSTALLATION. LOCATE MIDDLE LEG IN UNIT LEFT MULLION BEHIND MIDDLE LEG IN THE INSTALLED UNIT MULLION HALF. USE CAUTION TO KEEP FROM CONTACTING PREVIOUSLY INSTALLED UNITS. MOVE UNIT TO THE LEFT TO ENGAGE THE MIDDLE MULLION LEGS AND ROTATE UNIT TO SNAP BACK OF MULLION HALVES. SLIDE UNIT DOWN TO ENGAGE UNIT AT THE STARTER TRACK. CHECK TO MAKE SURE THAT 127213 AND 027806 VERTICAL GASKETS ARE IN PLACE AND HAVE NOT SLID UP IN MULLION REGLETS. SHIM AS NEEDED TO HOLD AT PROPER HEIGHT. REMOVE SHIMS AFTER SECURING TO ANCHORS.



CONTINUE ACROSS ELEVATION ALONG THE STARTER TRACK IN THE SAME MANNER AS NOTED IN PREVIOUS STEPS. CHECK UNIT SPACING EVERY 4 OR 5 UNITS TO ELIMINATE DIMENSIONAL BUILD-UP OF THE WIDTH OF THE ELEVATION. IF NECESSARY, BLOCK AND CLAMP MULLION HALVES TOGETHER TO KEEP UNITS IN ALIGNMENT DURING INSTALLATION OF NEXT UNIT. ADJUST UNIT HEIGHT AS NEEDED TO MAKE SURE UNITS ARE LEVEL, PLUMB AND AT THE CORRECT HEIGHT AND LOCATION.

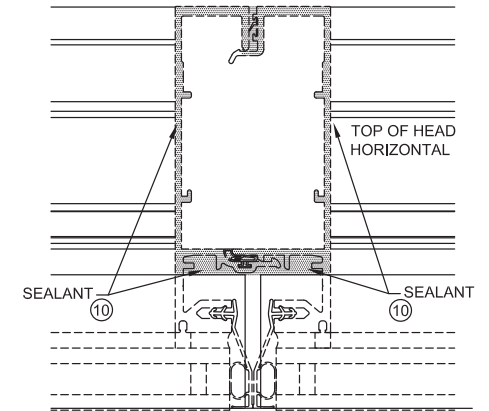
⑨ INSTALL (1) 427205 ALIGNMENT CLIP AT EVERY 3RD MULLION. PRIOR TO INSTALLING NEXT UNIT, LOCATE CLIP IN STARTER TRACK, UP AGAINST INSIDE OF MULLION WALL NUB, MATCH DRILL .147 DIA. [#26 DRILL] HOLES IN STARTER TRACK AND APPLY (2) 028514 #10 X 3/8" B PHTF SCREWS.



CONFIDENTIAL AND PROPRIETARY INFORMATION
KAWNEER COMPANY INC.

THESE DRAWINGS ARE THE SOLE AND EXCLUSIVE PROPERTY OF KAWNEER AND CONTAIN SENSITIVE, PRIVILEGED OR CONFIDENTIAL INFORMATION WHICH MAY BE USED ONLY FOR ITS BENEFIT. THE DISCLOSURE OF THESE DRAWINGS TO UNAUTHORIZED PERSONS IS STRICTLY PROHIBITED. THIS DOCUMENT AND ALL COPIES MUST BE RETURNED UPON DEMAND.
© COPYRIGHT KAWNEER COMPANY, INC., 2015

⑩ CHECK TO MAKE SURE ALL VERTICAL PARTS AT TOP OF MULLIONS ARE FLUSH SO 427204 CAP WILL ALIGN WITH HEAD HORIZONTALS. TRIM EXCESS GASKETS AT TOP OF MULLION. CLEAN TOP OF EXPOSED MULLION PER SEALANT MANUFACTURERS RECOMMENDATIONS. APPLY SEALANT AROUND TOP OF MULLION AND GASKETS AS SHOWN. SEALANT UNDER CAP MUST SEAL TO TOP OF VERTICAL AIR SEAL GASKET AND BACK FIN GASKET.



CONTINUE ACROSS ELEVATION IN A SIMILAR MANNER. CHECK UNIT SPACING EVERY 4 OR 5 UNITS TO ELIMINATE DIMENSIONAL BUILD-UP OF THE WIDTH OF THE ELEVATION. IF NECESSARY, BLOCK AND CLAMP MULLION HALVES TOGETHER TO KEEP UNITS IN ALIGNMENT DURING INSTALLATION OF NEXT UNIT.



2500 UT
SSG
INSTALLATION
INSTRUCTIONS

Product Engineering & Development

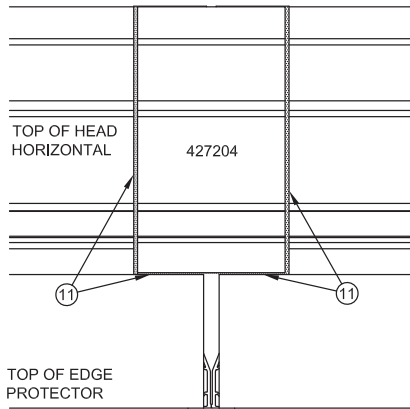
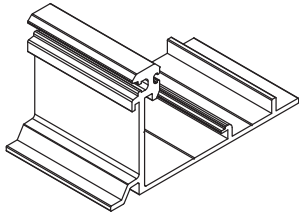
95524-005
06/30/15

CONFIDENTIAL AND PROPRIETARY INFORMATION
KAWNEER COMPANY INC.

THESE DRAWINGS ARE THE SOLE AND EXCLUSIVE PROPERTY OF KAWNEER AND CONTAIN SENSITIVE, PRIVILEGED OR CONFIDENTIAL INFORMATION WHICH MAY BE USED ONLY FOR ITS BENEFIT. THE DISCLOSURE OF THESE DRAWINGS TO UNAUTHORIZED PERSONS IS STRICTLY PROHIBITED. THIS DOCUMENT AND ALL COPIES MUST BE RETURNED UPON DEMAND.
© COPYRIGHT KAWNEER COMPANY, INC., 2015

- 11 APPLY 425204 2 3/8" LONG CAP IN LINE WITH HEAD HORIZONTAL. TOOL EXCESS SEALANT THAT SQUEEZES THROUGH SPACE BETWEEN CAP AND HEAD HORIZONTAL. APPLICATION AT JAMB MULLION SIMILAR.

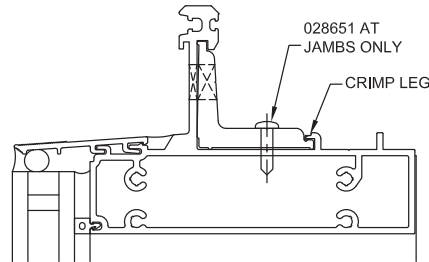
427204



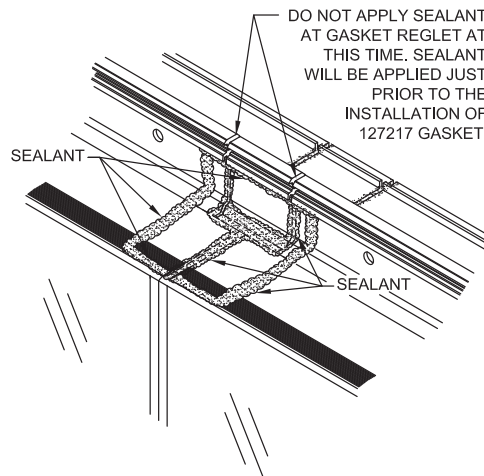
- 12 SLIDE THE 427206 REINFORCING ANGLE AT THE LEFT SIDE TO ENGAGE THE ADJOINING UNIT AND CENTER IT ON THE MULLION CENTERLINE. CRIMP LEG TO LOCK PART IN PLACE AT BOTH ENDS.

AT JAMB MULLION, ALIGN END OF 427223 ANGLE WITH SIDE OF JAMB MULLION HALF. MATCH DRILL .147" DIA. (#26 DRILL) HOLES IN CAP AND HEAD HORIZONTAL AND FIX WITH (2) 028651 #10 x 3/4" AB PHTF FASTENERS.

REINFORCEMENT ANGLES
427206 - TYPICAL - 9" LONG
427223 - JAMB - 6" LONG
427222 - HOISTING - 4" LONG



- 13 CLEAN AND PREPARE THE TOP SURFACE OF THE HEAD HORIZONTAL AND CAP LOCATIONS PER SEALANT MANUFACTURER'S RECOMMENDATIONS. APPLY SEALANT COMPLETELY AROUND THE ENTIRE FRONT FACE OF HEAD HORIZONTAL AS SHOWN FOR APPLICATION OF 127096 4" WIDE SILICONE SHEET. ALSO APPLY SEALANT BETWEEN CAP AND HEAD HORIZONTAL AT UPTURNED LEG AND EDGE PROTECTOR.

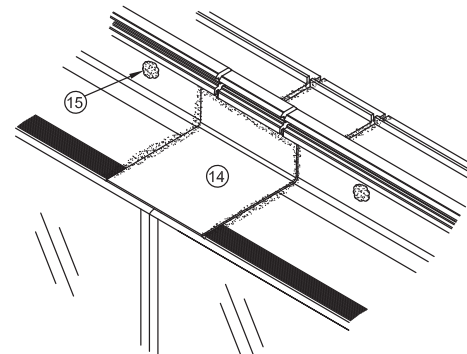


- 14 CLEAN AND SET 127096 (4" WIDE x 4 1/8" LONG) PIECE OF SILICONE SPLICE SHEET IN A CONTINUOUS BED OF SEALANT, PRESS FIRMLY AROUND EDGES AND TUCK INTO GROOVE AT TOP UNDER GASKET REGLET. THE CENTER OF THE SHEET OCCURS AT THE CENTER OF THE VERTICAL, OVERLAPPING THE SPLICE JOINTS. APPLY SILICONE AROUND EDGES AS REQUIRED AND TOOL SEALANT FLAT. SEE STEPS 16 AND 17 FOR SILICONE BOOT REQUIRED AT JAMBS.

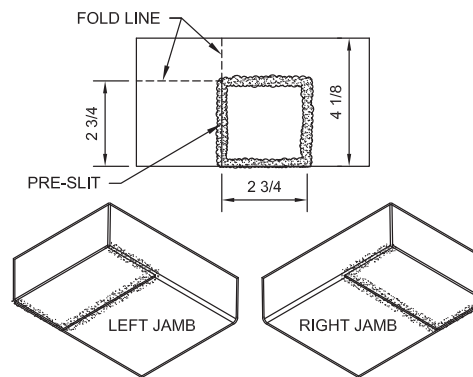
NOTE: HOLD LOW PROFILE AND MINIMIZE SEALANT BUILD UP OR DAMMING OF SEALANT AT TOP OF SILICONE SHEET.

- 15 SEAL HOLES USED FOR HOISTING UNITS.

INSPECT THE SPLICE JOINT FOR ANY GAP WHERE AIR OR WATER MAY PENETRATE. SEAL COMPLETELY WATERTIGHT.



- 16 FOR JAMB SLEEVES 127229, APPLY SEALANT AND FOLD SILICONE SHEET PARTS TO CREATE SILICONE BOOT. SAME PART, FOLDED OPPOSITE AS SHOWN, WILL BE USED AT THE RIGHT JAMB. TOOL SEALANT AROUND EDGES TO MAKE PART WATERTIGHT.

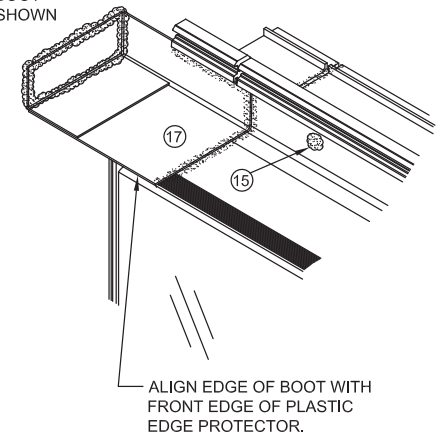


- 17 AT JAMBS, FOLLOW SAME PROCEDURE AS NOTED IN STEP 13 BUT USE 127229 BOOT NOTED IN STEP 16.

ALSO APPLY SEALANT ON END OF BOOT THAT WILL CONTACT BUILDING SUBSTRATE. SET SILICONE BOOT IN A CONTINUOUS BED OF SEALANT, PRESS FIRMLY AROUND EDGES AND TUCK INTO GROOVE AT TOP OF HEAD HORIZONTAL UNDER GASKET REGLET. THE BOOT SHOULD COMPLETELY COVER THE MULLION CAP, OVERLAPPING THE JOINTS AND EXTEND OVER TO BUILDING SUBSTRATE. APPLY SILICONE AROUND EDGES AS REQUIRED AND TOOL SEALANT FLAT.

NOTE: HOLD LOW PROFILE AND MINIMIZE SEALANT BUILD UP OR DAMMING OF SEALANT AT TOP OF SILICONE SHEET.

LEFT JAMB BOOT SHOWN



KAWNEER

2500 UT
SSG
INSTALLATION
INSTRUCTIONS

Product Engineering & Development

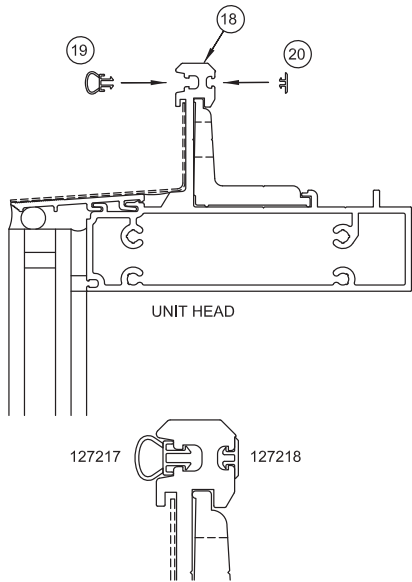
95524-005
06/30/15

427972 SHEET 11 OF 13

18 JUST PRIOR TO THE INSTALLATION OF THE 127217 STACK AIR SEAL GASKET, APPLY SEALANT INTO GAPS BETWEEN THE MULLION CAP AND HEAD HORIZONTAL AT THE TOP OF THE UPTURNED LEG. BE SURE TO TIE SEAL DOWN TO SILICONE SHEET SEAL PER PREVIOUS STEP 14.

19 PUSH-IN 127217 AIR SEAL GASKET CONTINUOUS IN THE HEAD HORIZONTAL. GASKET SHOULD NEVER BE "STRETCHED TO FIT". BUTT TOGETHER WHERE SPLICED AND SEAL ENDS.

20 PUSH-IN 127218 ISOLATOR INTO BACK OF UNIT HEAD HORIZONTAL AT MULLION CENTER LINES. ALSO APPLY ONE AT CENTER OF DLO, IF DLO IS OVER 48".

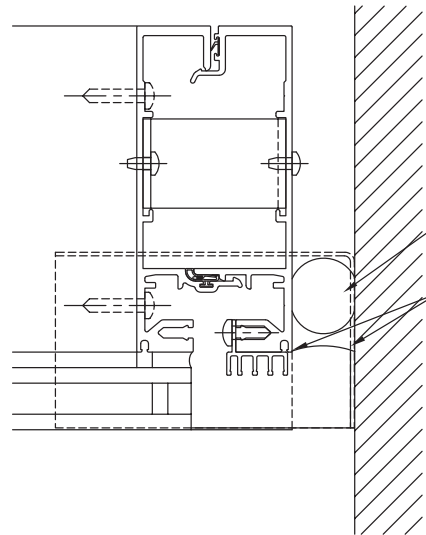


21 BEFORE PROCEEDING TO THE NEXT FLOOR, INSPECT ALL HORIZONTAL JOINTS TO ENSURE THEY ARE WATERTIGHT.

22 AT THE NEXT FLOOR, INSTALL UNITS USING STEPS PREVIOUSLY STATED. WHEN STACKING UNITS, ALIGN MULLIONS WITH UNIT BELOW. AT NOMINAL POSITION, TYPICAL SPACE AT BACK OF EXPANSION HORIZONTAL BETWEEN MULLION HALVES IS 1 3/16". SHIM BETWEEN TOP AND BOTTOM OF MULLION HALVES AS NEEDED. REMOVE SHIMS AFTER UNIT IS SECURED AT ANCHORS.

I APPLY PERIMETER SEALS

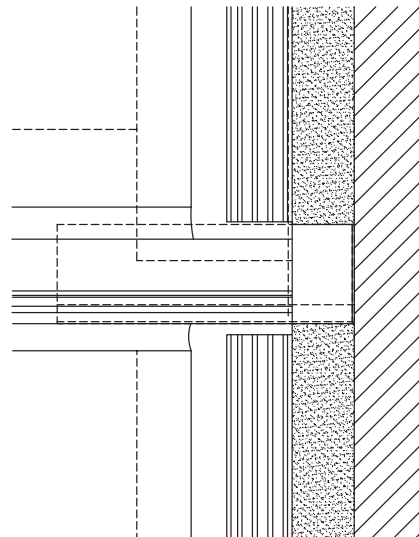
1 CLEAN MATERIALS AND APPLY PERIMETER SEALS PER MANUFACTURER'S RECOMMENDATIONS. TOOL SEALANT.



CLOSED CELL BACKER ROD

AT VERTICAL JAMB PERIMETER SEAL, APPLY BACKER ROD AND SEAL AS SHOWN. BE SURE TO SEAL TO MULLION, NOT ADAPTER.

TIE SEAL TO END OF 127217 HORIZONTAL AIR SEAL GASKET AND SILICONE BOOT, FROM FRAMING TO BUILDING SUBSTRATE. TOOL SEALANT AND CHECK TO ENSURE JOINT IS WATER TIGHT.



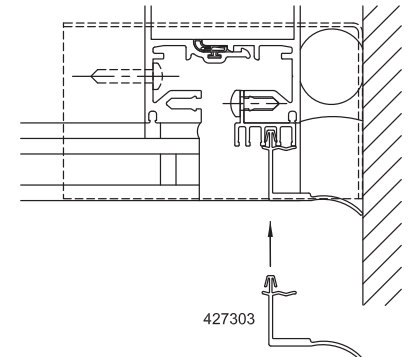
CLOSED CELL BACKER ROD

TIE SEAL TO SILICONE BOOT, FROM FRAMING TO BUILDING SUBSTRATE. TOOL SEALANT AND CHECK TO ENSURE JOINT IS WATER TIGHT.

CONFIDENTIAL AND PROPRIETARY INFORMATION
KAWNEER COMPANY INC.

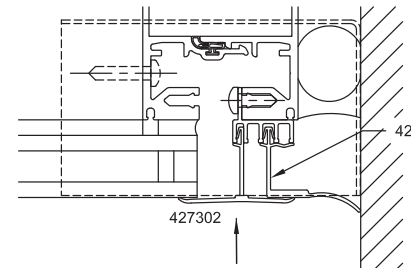
THESE DRAWINGS ARE THE SOLE AND EXCLUSIVE PROPERTY OF KAWNEER AND CONTAIN SENSITIVE, PRIVILEGED OR CONFIDENTIAL INFORMATION WHICH MAY BE USED ONLY FOR ITS BENEFIT. THE DISCLOSURE OF THESE DRAWINGS TO UNAUTHORIZED PERSONS IS STRICTLY PROHIBITED. THIS DOCUMENT AND ALL COPIES MUST BE RETURNED UPON DEMAND.
© COPYRIGHT KAWNEER COMPANY, INC., 2015

2 APPLY 427303 VERTICAL PERIMETER RAIN SCREEN. LOCATE PART IN ONE OF THE THREE GROOVES CLOSEST TO THE BUILDING SUBSTRATE. START PART JUST UNDER EDGE PROTECTOR AT TOP. OVERLAP EXTENSION OF LEG OVER TOP OF LOWER RAIN SCREEN AT BOTTOM OF EACH PART. LEG SHOULD CONTACT SUBSTRATE CONTINUOUSLY DOWN PART.



427303

3 APPLY 427302 JAMB SSG RAIN SCREEN. LOCATE PART IN GROOVE CLOSEST TO THE CENTER OF THE MULLION ONLY. START PART JUST UNDER EDGE PROTECTOR AT TOP. LEG SHOULD CONTACT GLASS AND 427303 GASKET CONTINUOUSLY DOWN PART.



427302

KAWNEER

2500 UT
SSG
INSTALLATION
INSTRUCTIONS

Product Engineering & Development

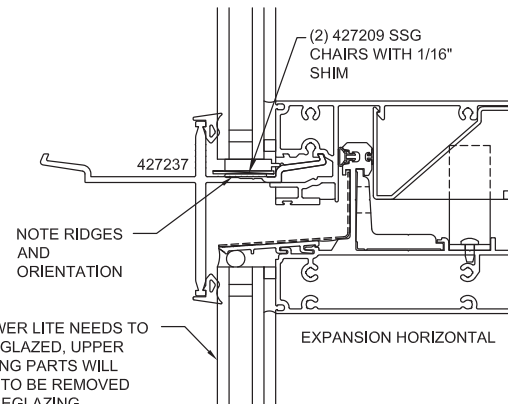
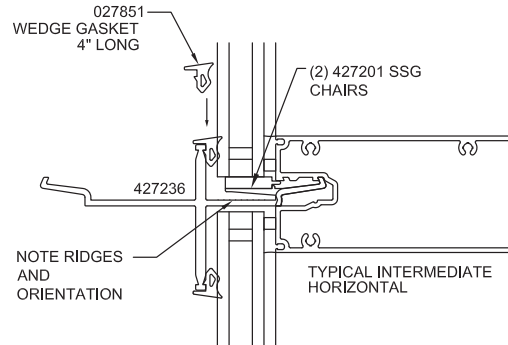
95524-005
06/30/15

CONFIDENTIAL AND PROPRIETARY INFORMATION
KAWNEER COMPANY INC.

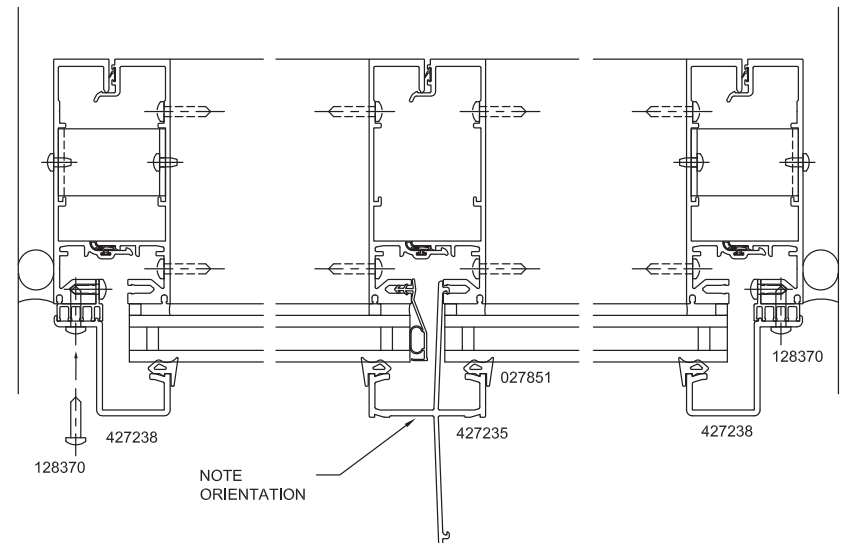
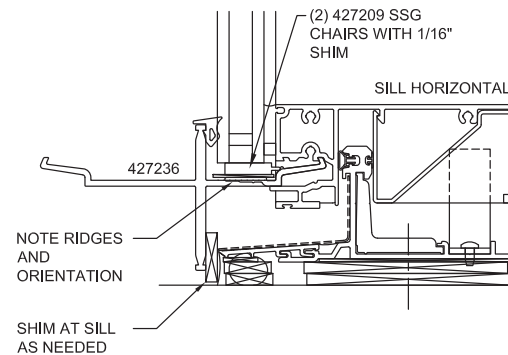
THESE DRAWINGS ARE THE SOLE AND EXCLUSIVE PROPERTY OF KAWNEER AND CONTAIN SENSITIVE, PRIVILEGED OR CONFIDENTIAL INFORMATION WHICH MAY BE USED ONLY FOR ITS BENEFIT. THE DISCLOSURE OF THESE DRAWINGS TO UNAUTHORIZED PERSONS IS STRICTLY PROHIBITED. THIS DOCUMENT AND ALL COPIES MUST BE RETURNED UPON DEMAND.
© COPYRIGHT KAWNEER COMPANY, INC., 2015

REGLAZING INSTRUCTIONS

- ① CUT AND REMOVE HORIZONTAL WEATHER SEALS AT GLASS LITE TO BE REPLACED.
- ② AT STACK HORIZONTAL, REMOVE SETTING BLOCK, 427309 THERMAL FACE GASKET AND 427209 CHAIRS AS NEEDED. REAPPLY CHAIRS, SETTING BLOCKS AND A 1/16" THICK SHIM AT 1/4 OR 1/8 POINTS UNDER GLASS LITE TO BE REPLACED.
- ③ REMOVE VERTICAL INTERMEDIATE RAIN SCREEN AND JAMB RAIN SCREENS AS NEEDED. USE A SPATULA AND/OR PLIERS TO WORK VERTICAL RAIN SCREENS OUT OF GROOVES.
- ④ APPLY TEMPORARY GLAZING CLIPS AROUND GLASS LITE TO BE REPLACED USING WEDGE GASKETS AND FASTENERS (AT JAMBS).
- ⑤ CUT AWAY SEALANT AND TAPE AROUND LITE TO BE REMOVED AND APPLY 4" LONG 027851 WEDGE GASKET ON INTERIOR SIDE AT TEMPORARY LOCATIONS TO KEEP GLASS TIGHT ON TEMPORARIES. TEMPORARIES RELY ON PRESSURE TO HOLD GLASS IN PLACE.
- ⑥ SECURE GLASS, REMOVE TEMPORARIES AND REMOVE GLASS.
- ⑦ CLEAN REMAINING SEALANT AND GASKET/TAPE FROM HORIZONTALS AND MULLION HALVES.
- ⑧ FOLLOW ASSEMBLY INSTRUCTIONS TO REPLACE LITE. APPLY 127095 TAPE AS SHOWN AND SHOOT STRUCTURAL SILICONE FROM THE INTERIOR.



IF LOWER LITE NEEDS TO BE REGLAZED, UPPER GLAZING PARTS WILL NEED TO BE REMOVED FOR REGLAZING TEMPORARY ATTACHMENT.



GLAZING TEMPORARY INFORMATION

MAXIMUM TEMPORARY SPACING IS 30". IF WINDS GREATER THAN 50 MPH ARE EXPECTED, ADDITIONAL TEMPORARIES MAY BE REQUIRED. CONSULT YOUR SEALANT AND/OR INFILL SUPPLIER FOR SPACING RECOMMENDATIONS.

AT CORNERS AND SPLAYED CONDITIONS, TEMPORARIES SHOULD BE MADE FROM A GOOD QUALITY HARDWOOD. THESE TEMPORARIES ARE NOT SUPPLIED BY KAWNEER.



2500 UT
SSG
INSTALLATION
INSTRUCTIONS

Product Engineering & Development

95524-005
06/30/15

427972 SHEET 13 OF 13