

GENERAL NOTES

- THE FOLLOWING PRECAUTIONS ARE RECOMMENDED TO ASSURE EARLY ACCEPTANCE OF YOUR PRODUCTS AND WORKMANSHIP:
 - HANDLE CAREFULLY - DON'T DROP. STACK WITH ADEQUATE SEPARATION SO MATERIALS WILL NOT RUB TOGETHER. STORE MATERIALS OFF THE GROUND. PROTECT AGAINST ELEMENTS AND OTHER CONSTRUCTION TRADES.
 - KEEP MATERIAL AWAY FROM WATER, MUD, AND SPRAY - PREVENT CEMENT, PLASTER OR OTHER MATERIALS FROM DAMAGING THE FINISH.
 - PROTECT THE MATERIALS AFTER ERECTION - BY WRAPPING WITH KRAFT PAPER OR BY ERECTING VISQUEEN OR CANVAS SPLATTER SCREENS. CEMENT, PLASTER, TERRAZZO AND OTHER ALKALINE SOLUTIONS ARE VERY HARMFUL TO THE FINISH AND SHOULD BE REMOVED IMMEDIATELY WITH WATER AND MILD SOAP. UNDER NO CIRCUMSTANCES ALLOW THESE MATERIALS TO DRY OR PERMANENT STAINING WILL OCCUR.

GENERAL RULES

- THE FOLLOWING PRACTICES ARE RECOMMENDED FOR ALL WALL INSTALLATIONS:
 - CHECK SHOP DRAWINGS TO BECOME THOROUGHLY FAMILIAR WITH THE JOB.
 - ALL MATERIALS ARE TO BE INSTALLED PLUMB, LEVEL AND TRUE.
 - ALL WORK SHOULD START FROM ESTABLISHED BENCH MARKS AND COLUMN CENTER LINES ESTABLISHED BY THE ARCHITECTURAL DRAWING AND THE GENERAL CONTRACTOR.
 - THE SEQUENCE OF ERECTION SHOULD BE COORDINATED WITH THE JOB SUPERINTENDENT SO DELAYS ARE PREVENTED AND THE RISK OF MATERIAL DAMAGE IS MINIMIZED. IF PRESETTING OF ANCHORAGE IS REQUIRED, COORDINATE WITH THE GENERAL CONTRACTOR AND SUPERVISE LOCATION.
 - MAKE CERTAIN THAT CONSTRUCTION WHICH WILL RECEIVE YOUR MATERIAL IS IN ACCORDANCE WITH THE CONTRACT DOCUMENTS. IF NOT, NOTIFY THE GENERAL CONTRACTOR IN WRITING, AND RESOLVE DIFFERENCES BEFORE PROCEEDING WITH YOUR WORK.
 - INSULATE ALL ALUMINUM TO BE PLACED DIRECTLY IN CONTACT WITH THE MASONRY OR INCOMPATIBLE MATERIALS WITH A HEAVY COAT OF ZINC CHROMATE OR BITUMINOUS PAINT.
 - FOLLOW KAWNEER INSTALLATION AND GLAZING INSTRUCTIONS.
 - CHECK ALL MATERIAL ON ARRIVAL FOR QUANTITY.
 - BE SURE TO HAVE ALL THE MATERIALS AND TOOLS NEEDED TO BEGIN THE INSTALLATION:

- APPROVED SHOP DRAWINGS
- LEVEL AND PLUMB (TRANSIT)
- FASTENERS AND DRIVERS AS REQUIRED (NOTE RECOMMENDED TOOLS)
- PERIMETERS AND ACCESSORIES SUCH AS ANCHORS, FASTENERS, SLEEVES OR SPLICE CAPS.
- SEALING MATERIALS (SEALANT / MASTIC)
- GLAZING MATERIALS

SPECIAL INSTRUCTIONS

NOTE:

THESE INSTALLATION INSTRUCTIONS ARE A SUPPLEMENT TO THE APPROVED SHOP DRAWINGS AND SHOULD BE USED IN CONJUNCTION WITH THOSE DRAWINGS.

FLASHING, GUTTERS AND BAFFLES MAY BE SHIPPED LONG AND WILL REQUIRE FIELD CUTTING AND FITTING.

SEQUENCE OF ANCHORING, SEALING, ERECTION AND GLAZING WILL VARY WITH EACH APPLICATION.

READ THROUGH THE INSTALLATION INSTRUCTIONS BEFORE STARTING ERECTION. TAKE NOTE OF ALL "SPECIAL INSTRUCTIONS", "GLAZING" AND "SEALING".

GLAZING

PRE-ASSEMBLE GLAZING BACKUP ONTO PRESSURE PLATES BEFORE INSTALLING. HAND START SEVERAL SCREWS IN EACH PRESSURE PLATE. THIS WILL REDUCE CREEP AND DIMENSIONAL BUILD UP WHEN SCREWS ARE DRIVEN TIGHT ONE AT A TIME. TORQUE SCREWS TO 40 INCH LBS. THIS VALUE MAY CHANGE DUE TO TYPE OF INFILL, INFILL SUPPLIER RECOMMENDATIONS OR TEMPERATURE. BACK UP ROD MUST BE INSTALLED AT BAFFLE. TAKE CARE TO AVOID DAMAGING INFILL WHEN INSTALLING ROD.

SEALING

- SEAL OVER ALL PURLIN TO RAFTER ANCHORING SCREWS. **REF: STEP 7.**
- SET ALL SPLICE SLEEVES AND SPLICE CAPS IN SEALANT. **REF: STEP 1, 2 & 5.**
- SEAL METAL TO METAL PURLIN TO RAFTER AT LOW SIDE OF COPE. **REF: STEPS 7.**
- SEAL PURLIN GASKET ENDS ESPECIALLY AT LOW SIDES. **REF: STEP 9.**
- SEAL ENDS OF ALL HORIZONTAL PRESSURE PLATES. **REF: STEP 12.**
- SEAL ENDS OF ALL VERTICAL PRESSURE PLATES AT BAFFLE. **REF: STEP 12.**
- SEAL OVER ALL GLAZING BACK UP. **REF: STEP 13.**
- PERIMETER SEALING IS ON A PER JOB BASIS. CONSULT APPROVED SHOP DRAWINGS.
- SEAL OVER ALL PRESSURE PLATE SCREWS.

INSTALLATION INSTRUCTIONS

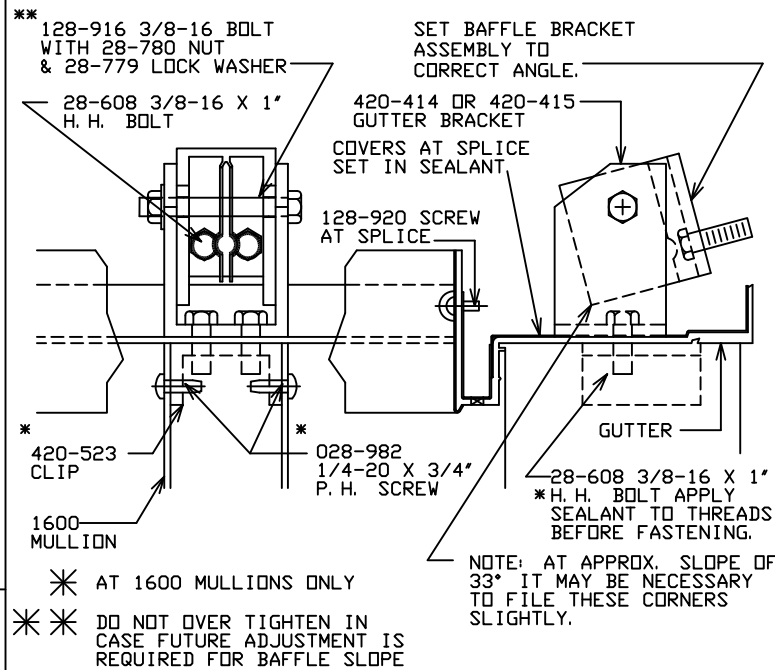
STEP 1

INSTALL GUTTER AND BRACKETS:

SET GUTTER PER SHOP DRAWINGS AND ATTACH TO TOP OF 1600 OR CURB WITH APPROPRIATE FASTENERS. (SEE STEP 1A FOR INSTALLATION OF GUTTER SPLICE SLEEVES)

SET ALL GUTTER BRACKETS IN SEALANT.

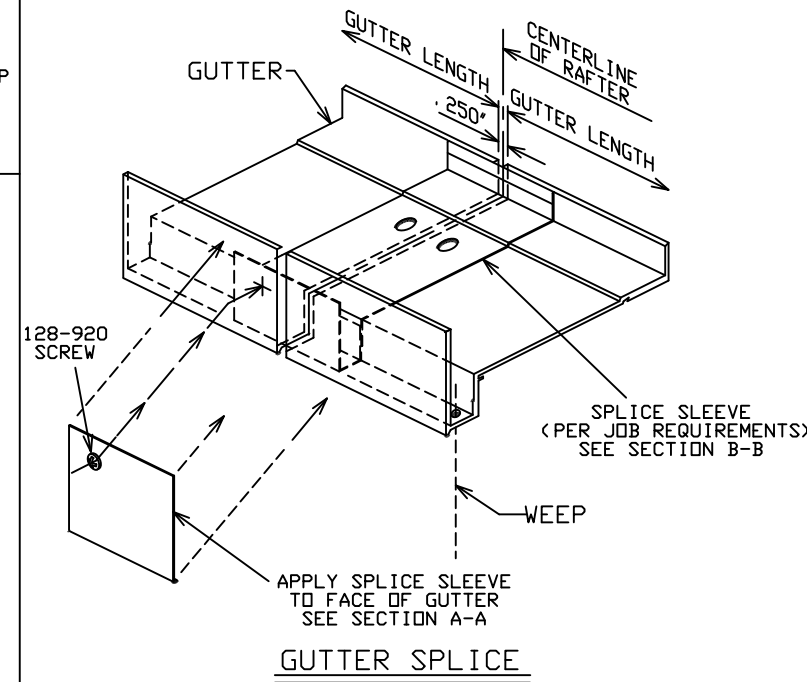
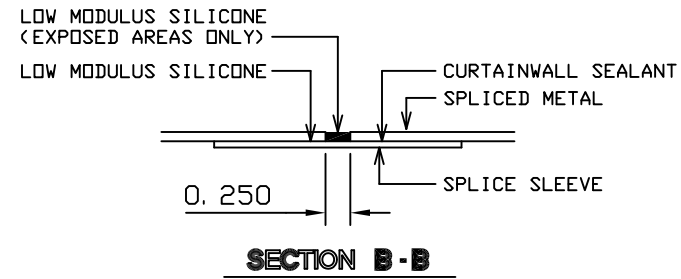
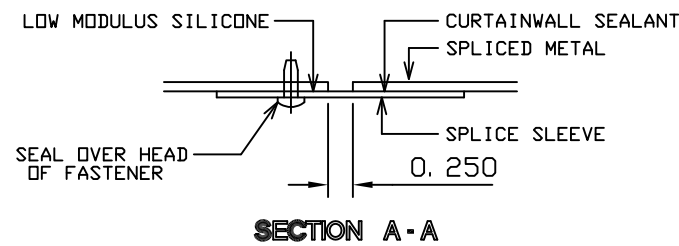
SEE **STEP 3** FOR SPECIAL JAMB INSTRUCTIONS.



STEP 1A

INSTALL GUTTER SPLICE SLEEVES:

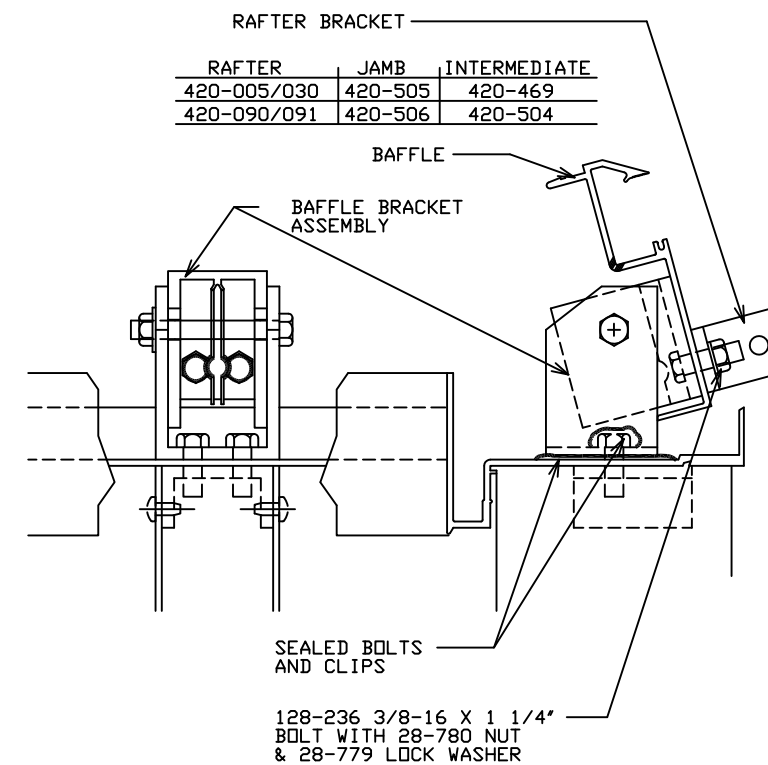
REFER TO SHOP DRAWINGS FOR SPLICE SLEEVE LOCATIONS. INSTALL GUTTER SPLICE SLEEVES AS SHOWN.



STEP 2

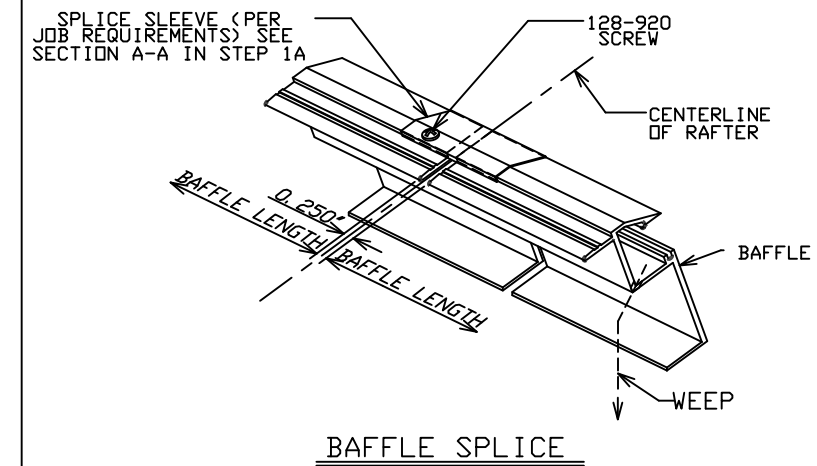
INSTALL BAFFLE AND BRACKET:

ATTACH BAFFLE PER SHOP DRAWINGS AND INSTALL RAFTER BRACKET. SEE **STEP 3** FOR SPECIAL JAMB INSTRUCTIONS.



STEP 2A

INSTALL BAFFLE SPLICE SLEEVES REFER TO SHOP DRAWINGS FOR SPLICE SLEEVE LOCATIONS. INSTALL BAFFLE SPLICE SLEEVES AS ILLUSTRATED BELOW.



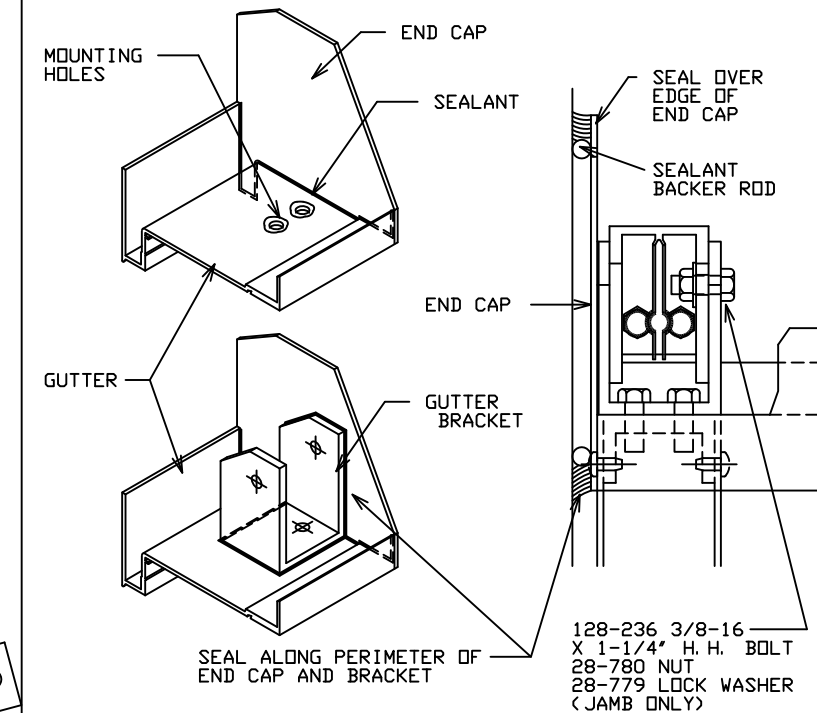
STEP 3

JAMB INSTRUCTIONS:

APPLY SEALANT ALONG INSIDE EDGE OF GUTTER AND BRACKET MOUNTING HOLES.

SET GUTTER BRACKET IN PLACE AND SEAL PERIMETER.

USE 128-236 BOLT FOR PIVOT PIN AT JAMB ONLY.



KAWNEER

1600 SLOPED GLAZING

SLOPE APPLIED TO VERTICAL 1600 WALL OR CURB WITH ADJUSTABLE BAFFLE AND GUTTER ASSEMBLY

PART NO. 420-498 1 OF 3

95366-48
10/03/97

DRAWING:

ORDER:

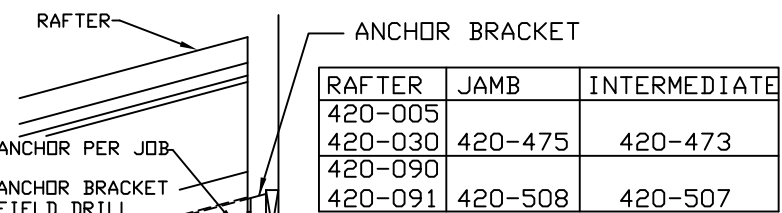
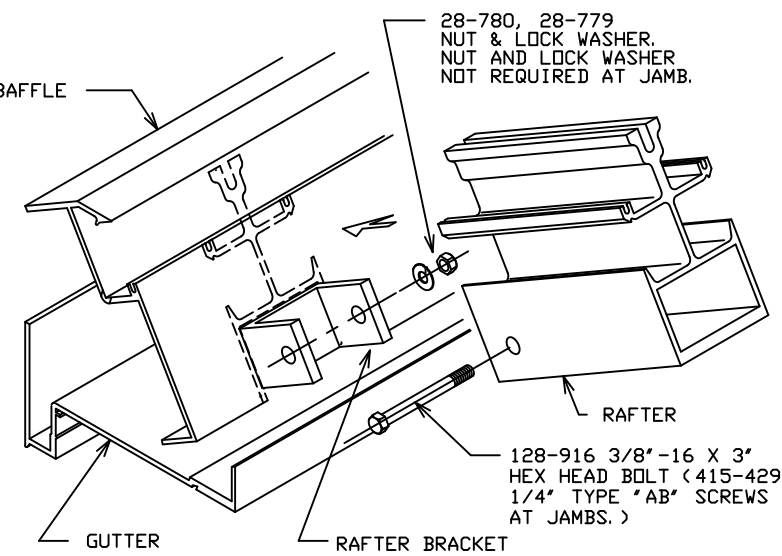
SHT:

STEP 4

INSTALL RAFTERS

SET RAFTER OVER BRACKET AT BAFFLE. INSTALL * BOLT THROUGH BRACKET AT BOTTOM. ALIGN, SPACE, SHIM TOP AND ATTACH PER APPROVED SHOP DRAWINGS.

* AT JAMBS USE TWO SELF-TAPPING SCREWS ON ONE SIDE OF RAFTER.



RAFTER	JAMB	INTERMEDIATE
420-005	420-475	420-473
420-030		
420-090		
420-091	420-508	420-507

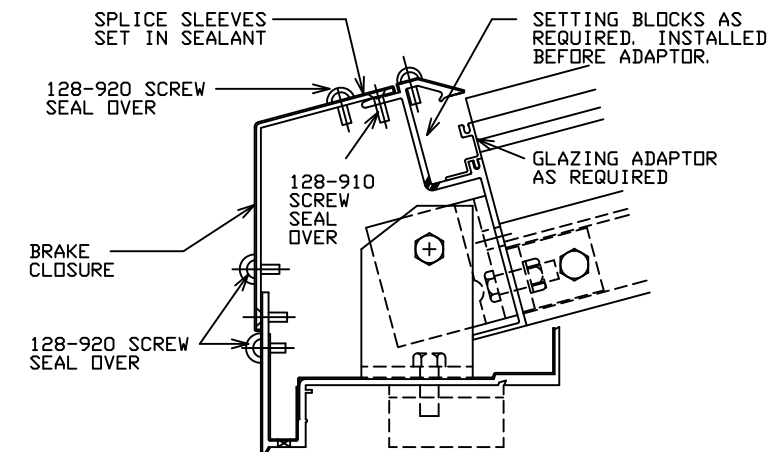
128-916 3/8"-16 X 3" HEX HEAD BOLT W/ 28-780 NUT & 28-779 LOCK WASHER (TWO 415-429 1/4" TYPE "AB" SCREWS AT JAMBS)

STEP 5

INSTALL CLOSURE

FOR BRAKE CLOSURE: MATCH DRILL BAFFLE AND GUTTER. APPLY SEALANT TO CONTACT SURFACE. ATTACH WITH SELF-TAPPING SCREWS.

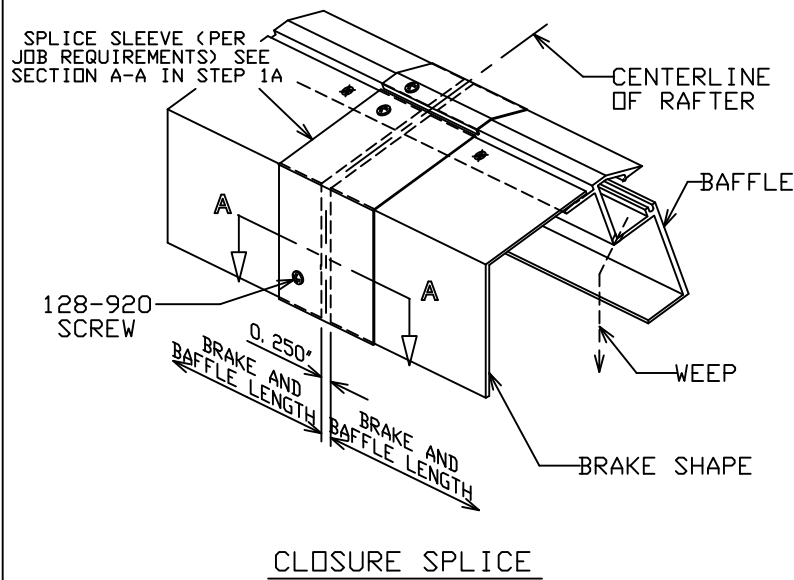
NOTE: SEAL BAFFLE CLOSURE TO END CAPS AT JAMBS.



STEP 5A

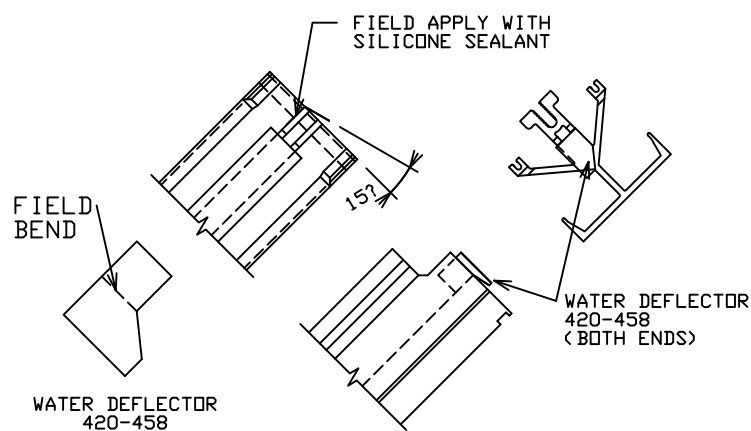
INSTALL CLOSURE SPLICE SLEEVES

REFER TO SHOP DRAWINGS FOR SPLICE SLEEVE LOCATIONS. INSTALL CLOSURE SPLICE SLEEVES AS ILLUSTRATED BELOW.



STEP 6

ATTACH WATER DEFLECTOR TO ENDS OF PURLIN.

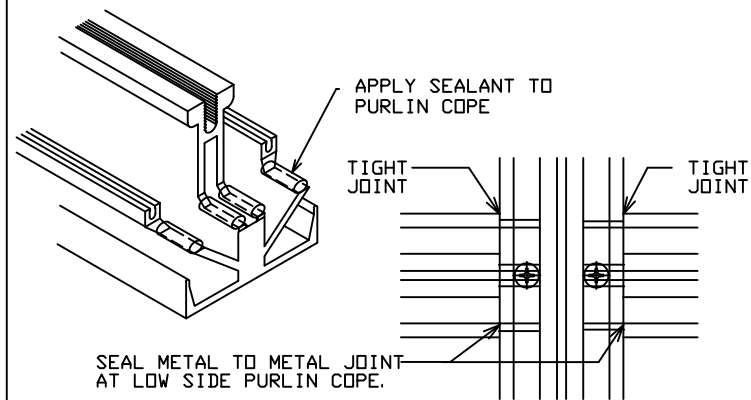
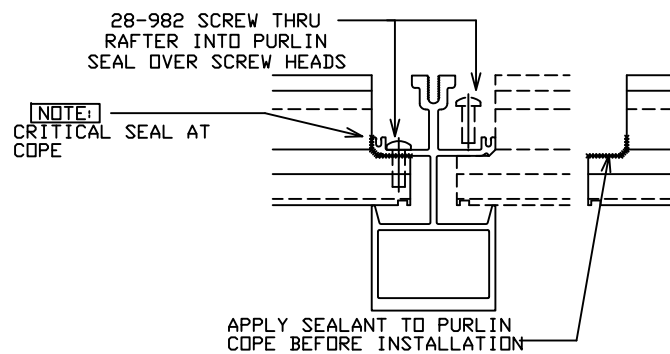


STEP 7

ATTACH PURLINS TO RAFTERS

APPLY SEALANT TO BOTH ENDS OF PURLIN AND ATTACH PURLIN TO RAFTER USING 28-982 SCREW AS SHOWN. SEAL OVER SCREW HEADS. PURLIN TO RAFTER JOINTS MUST BE TIGHT TO AVOID DIMENSIONAL BUILD UP.

FOR LARGER OPENINGS START NEAR THE CENTER AND WORK TOWARD JAMBS.

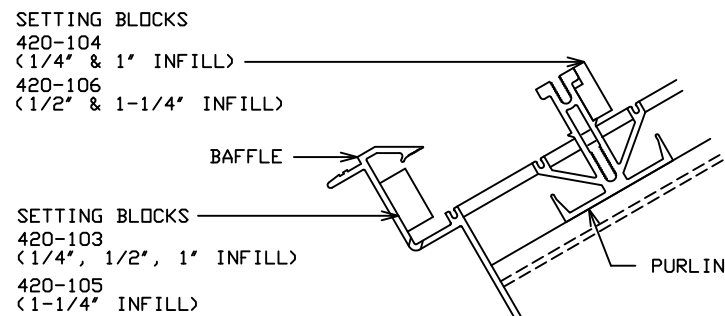


* SEE INSTRUCTION SHEET 420-495 FOR STRUCTURAL SILICONE GLAZED PURLIN INSTALLATION.

STEP 8

INSTALL SETTING BLOCKS

PLACE SETTING BLOCKS AT 1/4 POINTS IN SILL BAFFLE AND PURLINS.

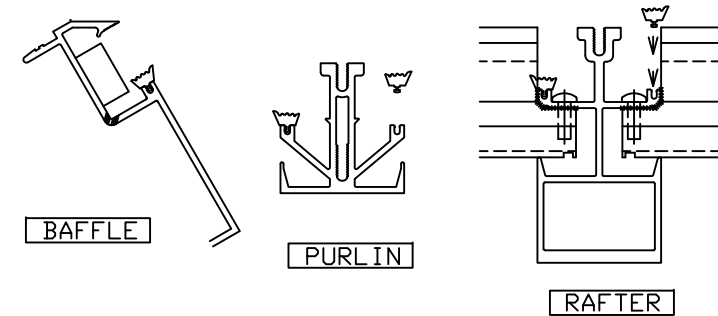
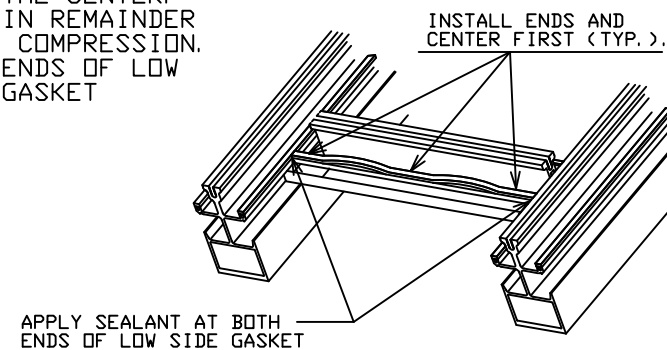


STEP 9

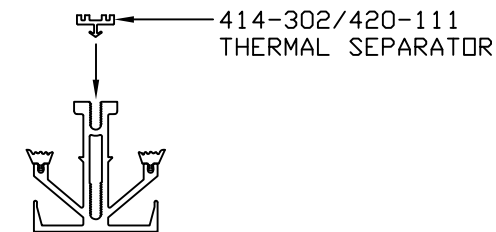
INSTALL GASKETS AND THERMAL SEPARATOR

CUT BAFFLE AND RAFTER GASKETS 3/16" LONG PER FOOT. INSTALL ONE END AND WORK REMAINDER IN UNDER COMPRESSION.

AT PURLINS INSTALL BOTH ENDS OF GASKET THEN THE CENTER. WORK IN REMAINDER UNDER COMPRESSION. SEAL ENDS OF LOW SIDE GASKET

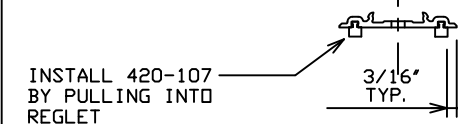


CUT THERMAL SEPARATOR TO LENGTH AND INSTALL IN RAFTERS AND PURLINS.



STEP 10

INSTALL PRESSURE PLATE FIXED GLAZING BACKUP

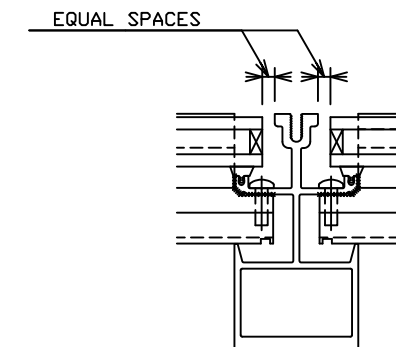


NOTE: CHECK FOR GASKET SEAL AND PURLIN COPE SEAL BEFORE GLAZING REF. STEP 7 & 9.

STEP 11

INSTALL INFILL

CENTER IN OPENING WITH BOTTOM EDGE ON SETTING BLOCKS.



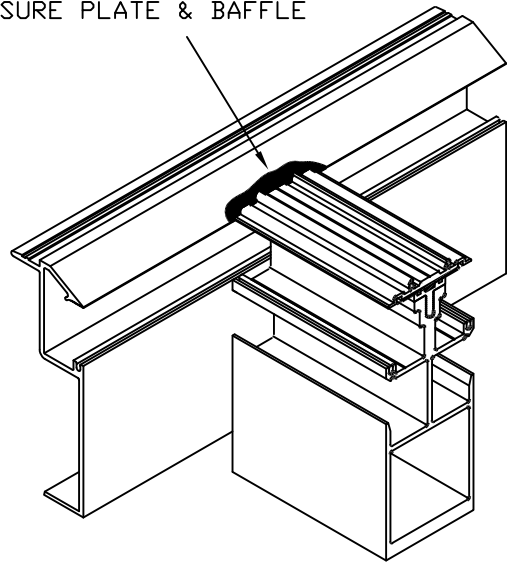
NOTE: ON MULTIPLE HEIGHT OPENINGS IT MAY BE ADVISABLE TO SET ONLY ONE LITE AHEAD OF SEALING OPERATION TO AVOID CLIMBING ON THE INSTALLED INFILL.

STEP 12

INSTALL PRESSURE PLATES & COVERS

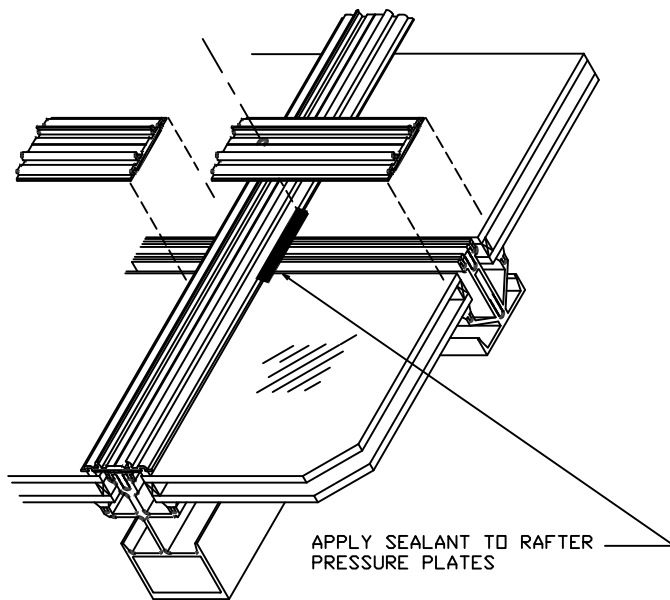
INSTALL VERTICAL RAFTER PRESSURE PLATES SETTING THEIR ENDS INTO SEALANT AT THE BAFFLE AS SHOWN BELOW. SEAL OVER ALL SCREW HEADS.

APPLY SEALANT BETWEEN PRESSURE PLATE & BAFFLE



APPLY SEALANT TO RAFTER PRESSURE PLATES AT PURLIN LOCATIONS AS SHOWN. APPLY SEALANT TO ENDS OF PURLIN PRESSURE PLATES AND ATTACH TO PURLINS USING HEX HEAD MACHINE SCREWS 9" O. C. SEAL OVER ALL SCREW HEADS.

NOTE: INSPECT PURLIN TO RAFTER PRESSURE PLATE JOINT. IF SEALANT DOES NOT SQUEEZE OUT APPLY ADDITIONAL SEALANT INTO JOINT UNTIL COMPLETELY FILLED.



INSTALL VERTICAL COVERS IMMEDIATELY AFTER PURLIN PRESSURE PLATES AND BEFORE SEALANT AT JOINT HAS CURED.

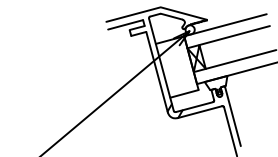
NOTE: RAFTER COVERS ARE CUT SHORT TO ALLOW FOR EXPANSION. INSTALL THEM UP TIGHT AGAINST THE BAFFLE, LEAVING A GAP AT THE HEAD.

BEFORE MOVING ON, INSTALL PURLIN COVERS MAKING SURE NOT TO DISTURB PURLIN TO RAFTER PRESSURE PLATE SEAL.

STEP 13

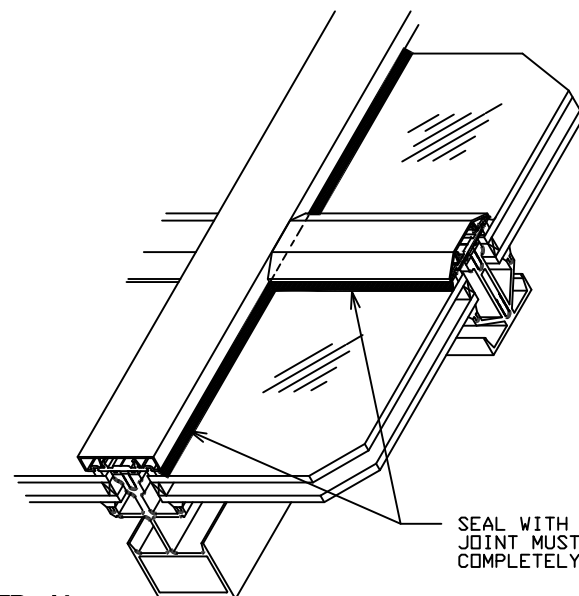
APPLY WEATHER SEAL AROUND INFILL

INSTALL BACKER ROD 27-140 AT BAFFLE ONLY.



NOTE: AVOID DAMAGING INFILL WHEN INSTALLING BACKUP ROD AT BAFFLE

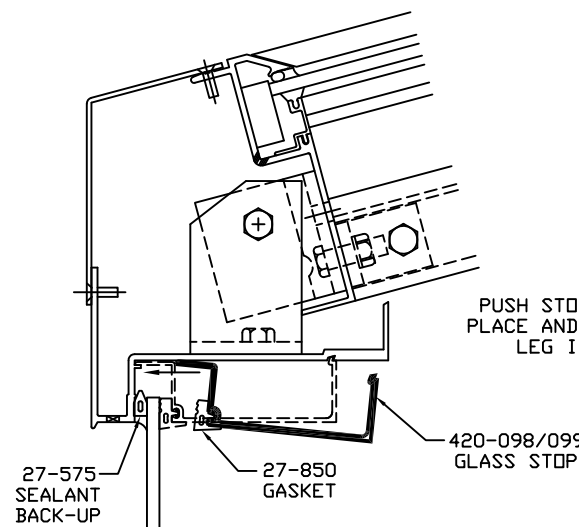
APPLY SEALANT AROUND INFILL COMPLETELY FILLING JOINT. TOOL SEALANT IMMEDIATELY.



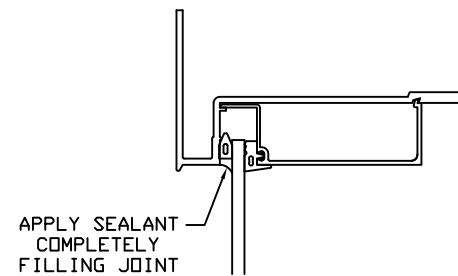
STEP 14

GLAZE INFILL BELOW GUTTER

INSTALL 1600 WALL INFILL DIRECTLY BELOW GUTTER. INSTALL 27-575 SEALANT BACK-UP BETWEEN GUTTER AND INFILL AS SHOWN. INSTALL 27-850 GASKET INTO GUTTER GLASS STOP AND SNAP STOP INTO PLACE AS SHOWN BELOW.



APPLY SEALANT AT EXTERIOR OF GUTTER USING THE 27-575 AS A BACK-UP. COMPLETELY FILL JOINT WITH SEALANT AND TOOL AS REQUIRED.



STEP 15

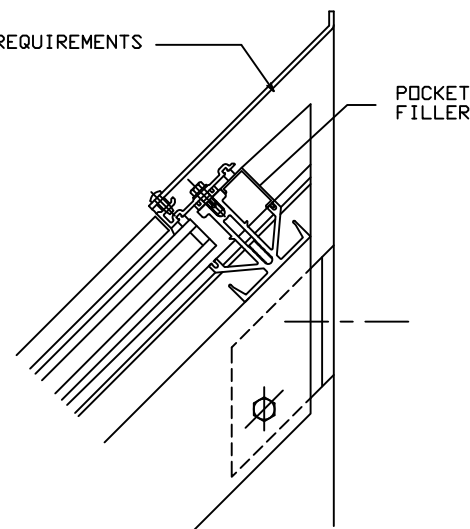
INSTALL AND SEAL ALL PERIMETER FLASHING AND SEAL OVER ALL EXPOSED FASTENER HEADS.

INSPECT COMPLETED INSTALLATION

FLASHING PER JOB REQUIREMENTS SEE SHOP DRAWINGS.

NOTE:

POCKET FILLER	INFILL
420-088	1/4"
420-064	1/2"
420-089	1"
420-063	1-1/4"



KAWNEER

1600 SLOPED GLAZING

SLOPE APPLIED TO VERTICAL 1600 WALL OR CURB WITH ADJUSTABLE BAFFLE AND GUTTER ASSEMBLY

PART NO. 420-498 3 OF 3

95366-46
05/02/97

DRAWING:

ORDER:

SHT: