

GENERAL NOTES

THESE INSTALLATION INSTRUCTIONS ARE A SUPPLEMENT TO THE APPROVED SHOP DRAWINGS. USE IN CONJUNCTION WITH THOSE DRAWINGS.

1 HANDLING, STORING AND PROTECTING ALUMINUM MATERIAL.

THE FOLLOWING PRECAUTIONS ARE RECOMMENDED TO ASSURE EARLY ACCEPTANCE OF YOUR PRODUCTS AND WORKMANSHIP.

A - HANDLE CAREFULLY DO NOT DROP FROM THE TRUCK. STACK WITH ADEQUATE SEPARATION SO MATERIAL WILL NOT RUB TOGETHER. STORE OFF THE GROUND. PROTECT AGAINST ELEMENTS AND OTHER CONSTRUCTION TRADES.

B - KEEP MATERIAL AWAY FROM WATER, MUD AND SPRAY PREVENT CEMENT, PLASTER AND OTHER MATERIALS FROM DAMAGING THE FINISH.

C - PROTECT THE MATERIALS AFTER ERECTION, BY WRAPPING WITH KRAFT PAPER OR BY ERECTING VISQUEEN/CANVAS SPLATTER SCREENS. CEMENT, PLASTER, TERRAZZO AND OTHER ALKALINE MATERIALS ARE VERY HARMFUL TO THE FINISH AND SHOULD BE REMOVED WITH WATER AND MILD SOAP BEFORE SETTING OCCURS. UNDER NO CIRCUMSTANCES ALLOW THESE MATERIALS TO DRY OR PERMANENT STAINING WILL OCCUR.

2 GENERAL RULES

THE FOLLOWING PRACTICES ARE RECOMMENDED FOR ALL WALL INSTALLATIONS.

A - READ COMPLETE INSTRUCTIONS BEFORE ORDERING GLASS OR FABRICATING MATERIAL.

B - CHECK SHOP DRAWINGS TO BECOME THOROUGHLY FAMILIAR WITH THE JOB.

C - ALL MATERIALS ARE TO BE INSTALLED PLUMB, LEVEL AND TRUE.

D - ALL WORK SHOULD START FROM ESTABLISHED BENCH MARKS AND COLUMN CENTER LINES ESTABLISHED BY THE ARCHITECTURAL DRAWINGS AND THE GENERAL CONTRACTOR.

E - THE SEQUENCE OF ERECTION SHOULD BE COORDINATED WITH THE JOB SUPERINTENDENT SO DELAYS ARE PREVENTED AND RISK OF MATERIAL DAMAGE IS MINIMIZED. IF PRESETTING OF ANCHORAGE IS REQUIRED, COORDINATE WITH GENERAL CONTRACTOR AND SUPERVISE LOCATION.

F - MAKE CERTAIN CONSTRUCTION WHICH WILL RECEIVE YOUR MATERIALS IS ACCORDING TO THE CONTRACT DOCUMENTS. IF NOT, NOTIFY THE GENERAL CONTRACTOR IN WRITING AND RESOLVE DIFFERENCES BEFORE PROCEEDING WITH YOUR WORK.

G - INSULATE ALL ALUMINUM TO BE PLACED DIRECTLY IN CONTACT WITH THE MASONRY OR INCOMPATIBLE MATERIALS WITH A HEAVY COAT OF ZINC CHROMATE OR BITUMINOUS PAINT.

H - FOLLOW KAWNEER INSTALLATION AND GLAZING INSTRUCTIONS.

J - CHECK ALL MATERIAL ON ARRIVAL FOR QUANTITY.

K - BE SURE YOU HAVE ALL THE MATERIALS AND TOOLS NEEDED TO BEGIN THE INSTALLATION.

- 1 - APPROVED SHOP DRAWINGS
- 2 - LEVEL AND PLUMB (TRANSIT)
- 3 - FASTENERS AND REQUIRED DRIVERS.
- 4 - PERIMETERS AND ACCESSORIES SUCH AS ANCHORS, FASTENERS, SLEEVES AND/OR SPLICE CAPS.
- 5 - SEALING MATERIALS.
- 6 - GLAZING MATERIALS.

L - FOLLOW SEALANT MANUFACTURER'S RECOMMENDATIONS FOR PROPER SEALANT AND APPLICATION. ALL SEALANTS AND MASTICS MUST BE COMPATIBLE WITH ALL SURFACES INCLUDING OTHER SEALANT SURFACES. WHERE REQUIRED ALL SEALANTS MUST ADHERE TO ALL SURFACES INCLUDING OTHER SEALANT SURFACES.

1620 SSG NOTES

1620 SSG SYSTEM IS AVAILABLE WITH 1" FRAMING MEMBERS WHICH ACCEPT BOTH 1" AND 1/4" INFILLS.

THE TERM "CAPTURED VERTICALS OR CAPTURED HORIZONTALS" WILL BE USED THROUGHOUT THESE INSTRUCTIONS. THIS MEANS FRAMING MEMBERS THAT ACCEPT AN EXTERIOR PRESSURE PLATE AND COVERS. "STRUCTURAL GLAZED VERTICALS" DO NOT ACCEPT EXTERIOR METAL.

GLASS BITE IS 7/16" AT CAPTURED VERTICALS AND HORIZONTALS. GLASS BITE IS 3/4" AT STRUCTURAL GLAZED VERTICALS. GLASS SIZES MUST BE CALCULATED FROM APPROVED SHOP DRAWINGS.

UNLESS OTHERWISE SPECIFIED, IT IS RECOMMENDED THAT SILICONE SEALANT BE USED FOR ALL INTERNAL SEALS.

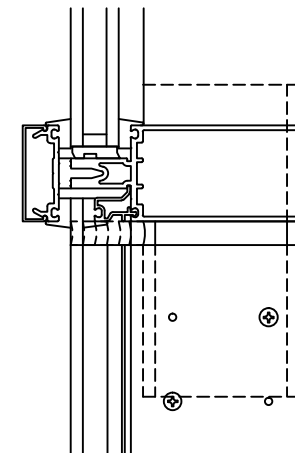
SEALANT MUST BE APPLIED PER THE SEALANT MANUFACTURER'S RECOMMENDATIONS AND PASS ALL ADHESION AND COMPATIBILITY TESTING. AT ALL JOINT SEALS, SEALANT MUST ADHERE TO METAL, GASKETS, THERMAL SEPARATOR AND JOINT PLUG MATERIALS.

CLEAN ALL SURFACES PRIOR TO APPLICATION OF SEALANT AND PRIME WHERE NECESSARY TO ACHIEVE PROPER ADHESION.

VERTICAL MULLION SPLICE
VERTICAL MULLIONS THAT ARE STRUCTURALLY GLAZED MUST BE SPLICED AT A HORIZONTAL. LOCATION OF THIS SPLICE MUST BE REVIEWED FOR STRUCTURAL INTEGRITY BY FACTORY ENGINEERING.

SHIM ALL SILL HORIZONTALS AT SETTING BLOCK LOCATIONS.

TYPICAL SPLICE LOCATION VISION OVER SPANDREL HORIZONTAL



CONFIDENTIAL AND PROPRIETARY INFORMATION
KAWNEER COMPANY INC.

THESE DRAWINGS ARE THE SOLE AND EXCLUSIVE PROPERTY OF KAWNEER AND CONTAIN SENSITIVE, PRIVILEGED OR CONFIDENTIAL INFORMATION WHICH MAY BE USED ONLY FOR ITS BENEFIT. THE DISCLOSURE OF THESE DRAWINGS TO UNAUTHORIZED PERSONS IS STRICTLY PROHIBITED. THIS DOCUMENT AND ALL COPIES MUST BE RETURNED UPON DEMAND.
© COPYRIGHT KAWNEER COMPANY, INC., 2014

STRUCTURAL SEAL NOTES

STRUCTURAL SILICONE SEAL - THE GLAZING INSTALLER IS RESPONSIBLE FOR SELECTING AND CONTACTING THE SILICONE MANUFACTURER TO DETERMINE WHICH TYPE OF SILICONE IS TO BE USED AND WHAT SAMPLES ARE REQUIRED TO BE SUBMITTED FOR ADHESION AND COMPATIBILITY TESTING.

THE SILICONE SEALANT SHALL NOT BE APPLIED TO KAWNEER PRODUCTS WITHOUT THE APPROVAL OF THE SILICONE MANUFACTURER AND UNTIL ALL REQUIRED TESTING IS COMPLETED AND DETAILED APPLICATION INSTRUCTIONS HAVE BEEN DELIVERED TO THE INSTALLER BY THE SILICONE MANUFACTURER.

IF YOU FIND THE SILICONE MANUFACTURER'S INSTALLATION INSTRUCTIONS ARE NOT IN ACCORDANCE WITH KAWNEER'S INSTALLATION INSTRUCTIONS, IT IS YOUR RESPONSIBILITY TO NOTIFY KAWNEER OF THIS CONFLICT PRIOR TO GLAZING.

YOUR GLASS SUPPLIER MUST BE MADE AWARE THAT THEIR GLASS WILL BE USED IN A SSG APPLICATION. THE APPLICATION MUST BE APPROVED BY THE GLASS SUPPLIER PRIOR TO GLAZING.

ANY STRUCTURAL SILICONE GLAZED PRODUCT APPLICATION THAT IS NOT SHOWN IN KAWNEER'S STANDARD PRODUCT LITERATURE MUST BE PREAPPROVED BY KAWNEER.

EXTERIOR GLASS WEATHER SEAL SEALANT TO BE A TYPE AS RECOMMENDED BY THE MANUFACTURER OF THE STRUCTURAL SEALANT BEING USED FOR THIS PROJECT.

SEALANT MUST BE APPLIED PER THE SEALANT MANUFACTURER'S RECOMMENDATIONS. WEATHER SEAL SEALANT MUST ADHERE TO EXTERIOR GASKET MATERIAL.

KAWNEER

1620 SSG
INSTALLATION
INSTRUCTIONS

Product Engineering & Development

95525-005
02/21/14

178971 SHEET 01 OF 12

CONFIDENTIAL AND PROPRIETARY INFORMATION
KAWNEER COMPANY INC.

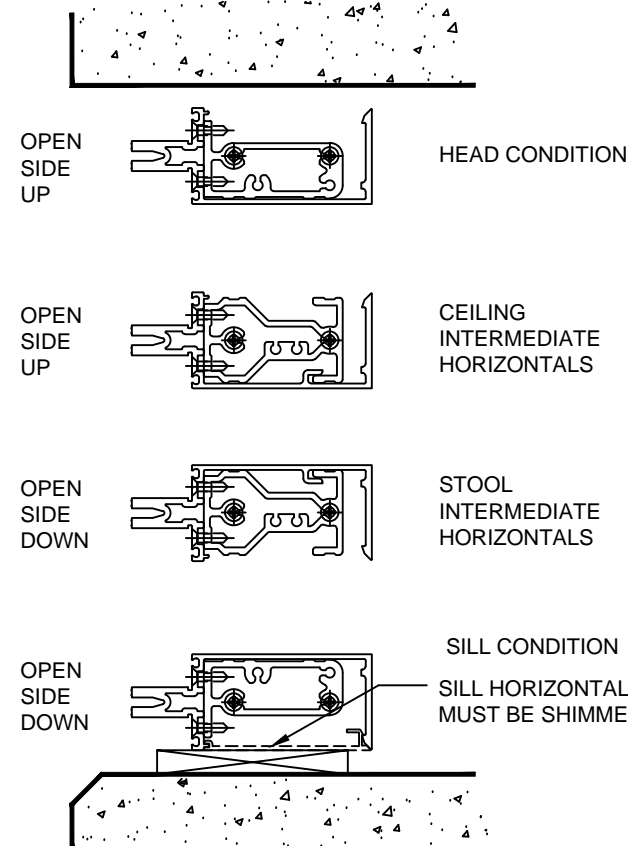
THESE DRAWINGS ARE THE SOLE AND EXCLUSIVE PROPERTY OF KAWNEER AND CONTAIN SENSITIVE, PRIVILEGED OR CONFIDENTIAL INFORMATION WHICH MAY BE USED ONLY FOR ITS BENEFIT. THE DISCLOSURE OF THESE DRAWINGS TO UNAUTHORIZED PERSONS IS STRICTLY PROHIBITED. THIS DOCUMENT AND ALL COPIES MUST BE RETURNED UPON DEMAND.
© COPYRIGHT KAWNEER COMPANY, INC., 2014

OPEN BACK HORIZONTAL NOTES

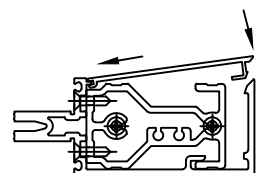
THE OPEN BACK HORIZONTAL IS TO BE TYPICALLY USED FOR ALL HEAD/SILL AND LAST BAY INTERMEDIATE HORIZONTALS.

THE OPEN BACK HORIZONTAL CAN BE USED AT OTHER CONDITIONS IF IT IS AN ADVANTAGE TO THE JOB DESIGN.

THE SHEAR BLOCK AT ALL OPEN BACK INTERMEDIATE HORIZONTALS HAS THE OPTION TO BE PREINSTALLED INTO THE HORIZONTAL BEFORE HORIZONTALS ARE INSTALLED



WHEN THE OPEN SIDE OF THE OPEN BACK HORIZONTAL IS EXPOSED AND AT EYE LEVEL A SNAP-IN FILLER IS AVAILABLE.



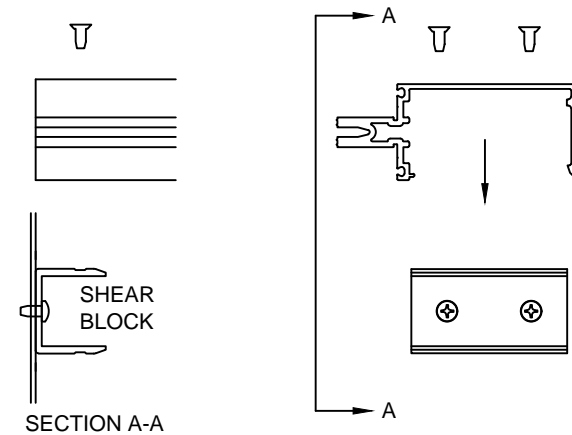
WHEN THE SNAP-IN FILLER IS NOT USED, AND DUE TO STANDARD COMMERCIAL EXTRUDING TOLERANCES, IT MAY BE REQUIRED TO USE A 4" PIECE OF THE FILLER AT EACH END OF A HORIZONTAL.

USE PART 162316 FOR THE 6" DEEP SYSTEM
USE PART 162317 FOR THE 7 1/2" DEEP SYSTEM

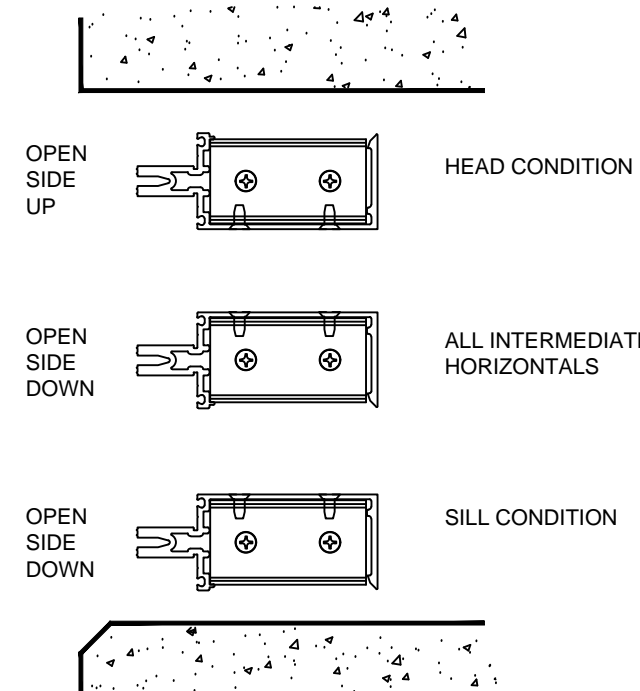
OPEN BACK HORIZONTALS AT 90° AND 135° CORNERS

WHENEVER POSSIBLE AVOID USING OPEN BACK HORIZONTALS AT 90° AND 135° CORNERS. IF USING THE OPEN BACK HORIZONTAL BECOMES ABSOLUTELY NECESSARY THE SHEAR BLOCK CONNECTION WILL BE AS SHOWN BELOW.

ALSO REFER TO CORNER INSTRUCTIONS 162973



THE OPEN SIDE OF THE OPEN BACK HORIZONTAL IS TO BE POSITIONED AS SHOWN BELOW. THE INTERMEDIATE HORIZONTAL IS POSITIONED OPEN SIDE DOWN FOR DEAD LOAD SUPPORT.



STEP - 1 CHECK OPENINGS

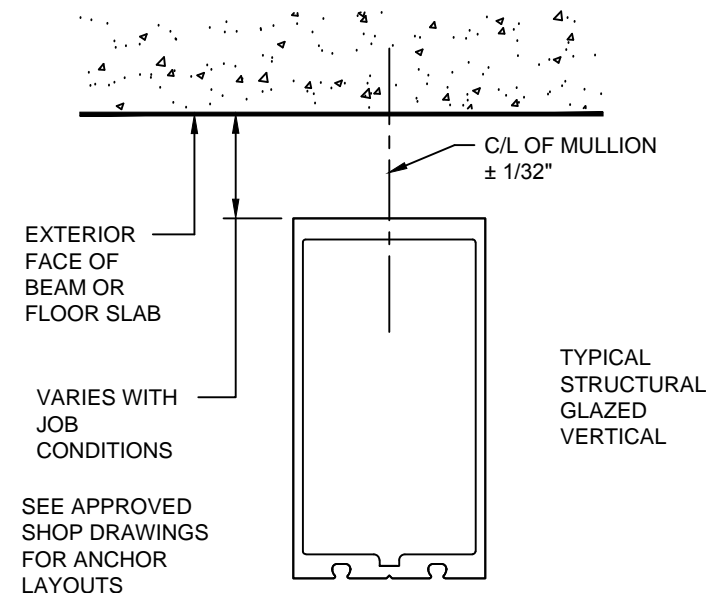
ELEVATIONS AND SLABS MUST BE WITHIN ADJUSTMENT OF ANCHORING SYSTEM. SEE APPROVED SHOP DRAWINGS FOR ALLOWABLE ADJUSTMENT.

ANCHORING SURFACES OF PERIMETER CONSTRUCTION MUST BE LEVEL AND PLUMB WITHIN THE ADJUSTMENT LIMITS OF THE HEAD, SILL AND JAMB. SEE APPROVED SHOP DRAWINGS FOR ALLOWABLE ADJUSTMENT.

STEP - 2 LAY OUT ANCHOR AND MULLION CENTERLINES

USE WALL LINES ESTABLISHED BY THE GENERAL CONTRACTOR. ON EACH FLOOR LAY OUT A REFERENCE LINE TO ESTABLISH IN AND OUT WALL LOCATIONS.

USE COLUMN CENTER LINES ESTABLISHED BY THE GENERAL CONTRACTOR. ON EACH FLOOR LAY OUT MULLION CENTER LINES AND ANCHOR CENTER LINES.



STEP - 3 INSTALL PRESET ANCHORS IF APPLICABLE

USING LOCATION LINES PREVIOUSLY ESTABLISHED INSTALL PRESET ANCHORS IN PLACE PER APPROVED SHOP DRAWINGS.



1620 SSG
INSTALLATION
INSTRUCTIONS

Product Engineering & Development

95525-005
02/21/14

178971 SHEET 02 OF 12

STEP - 4 FRAME ASSEMBLY

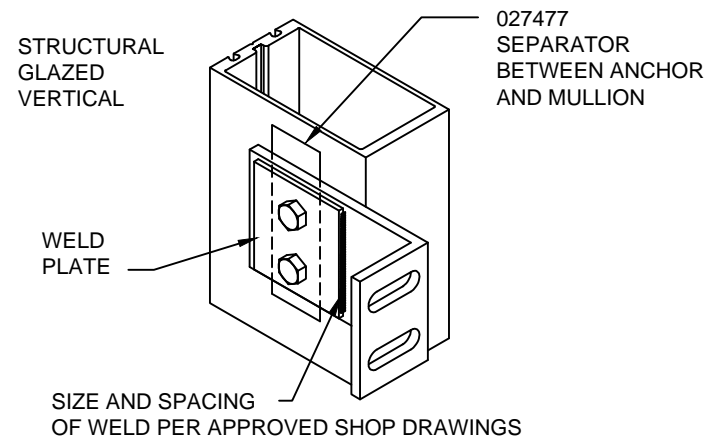
ATTACH ANCHORS TO MULLIONS WHERE APPLICABLE.

ANCHOR PREP MAY BE FABRICATED IN THE FIELD OR FACTORY. CONSULT APPROVED SHOP DRAWINGS FOR CORRECT METHOD.

STANDARD ANCHOR PREP IS THRU-BOLTED AT INTERMEDIATE VERTICALS AND TAPPING PLATES ARE USED AT JAMB VERTICALS. REFER TO APPROVED SHOP DRAWINGS FOR CORRECT METHOD.

WHEN WELDING ANCHORS, PROTECT INSTALLED GLASS AND METAL FROM WELD SPLATTER.

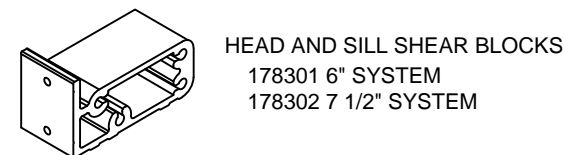
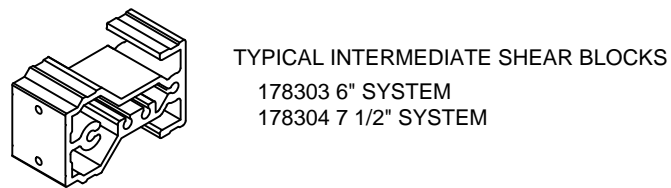
DETAILS SAME FOR "CAPTURED VERTICALS AT JAMB"



DO NOT OVER TIGHTEN ANCHOR CONNECTIONS. TIGHTEN TO A "SNUG TIGHT" POSITION WITH PARTS BROUGHT INTO GOOD CONTACT. BE SURE ANY SPRING TYPE LOCK WASHERS ARE COMPRESSED. THEN TIGHTEN APPROXIMATELY 1/2 MORE TURN.

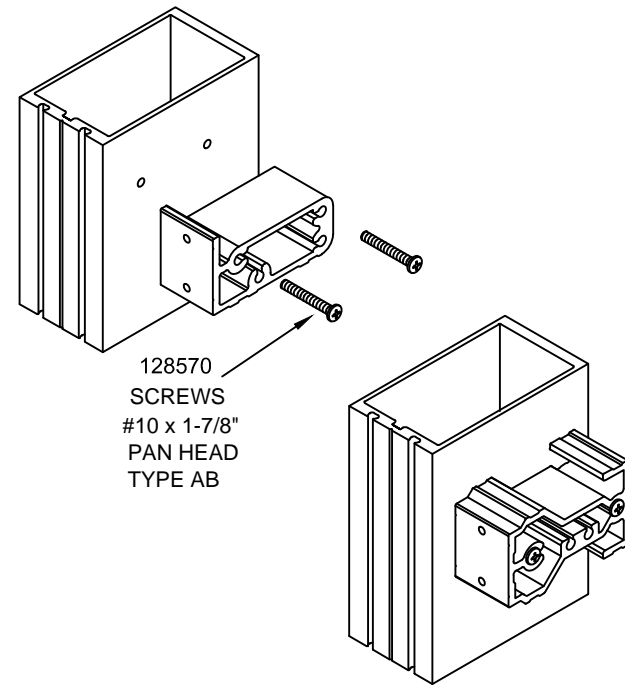
ATTACH SHEAR BLOCKS. STRUCTURAL GLAZED VERTICAL

DETAILS SIMILAR FOR "CAPTURED VERTICALS AT JAMB"

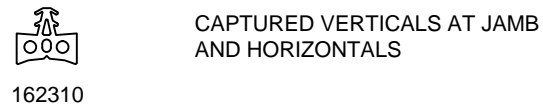


STEP - 4 FRAME ASSEMBLY

ATTACH SHEAR BLOCKS.

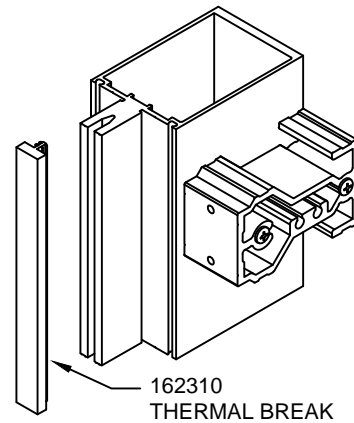


STEP - 5 INSTALL 162310 THERMAL BREAK



DO NOT STRETCH WHEN REMOVING FROM COIL AND CARTON

DO NOT STRETCH DURING INSTALLATION



STEP - 5 INSTALL 162310 THERMAL BREAK

162310 THERMAL BREAK

OPTION TO INSTALL THERMAL BREAK AFTER VERTICALS AND HORIZONTALS ARE INSTALLED

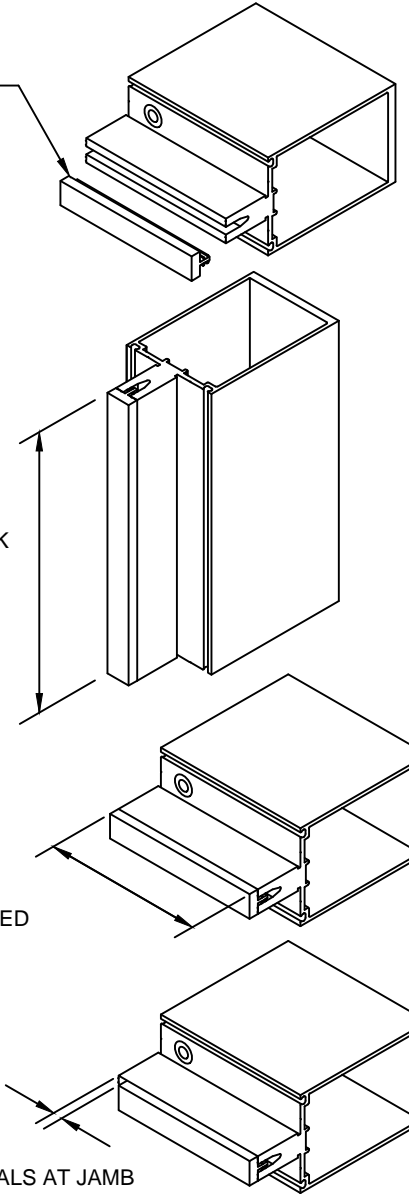
THERMAL BREAK TO BE SAME LENGTH AS VERTICAL MULLIONS

NOTE

THERMAL BREAK TO BE THE SAME LENGTH AS THE HORIZONTAL AT STRUCTURAL GLAZED VERTICALS

NOTE

THERMAL BREAK TO BE 1/4" SHORT AT EACH END OF HORIZONTAL AT CAPTURED VERTICALS AT JAMB



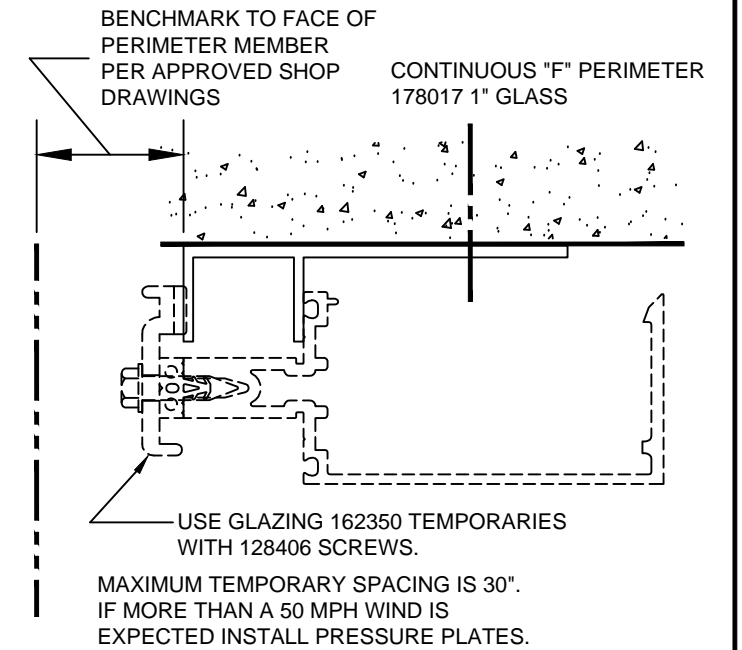
FOR CAPTURED VERTICALS AT JAMB INSTALL HEAD AND SILL END CAPS 178342 1" FRAMING SET IN SEALANT

CONFIDENTIAL AND PROPRIETARY INFORMATION
KAWNEER COMPANY INC.

THESE DRAWINGS ARE THE SOLE AND EXCLUSIVE PROPERTY OF KAWNEER AND CONTAIN SENSITIVE, PRIVILEGED OR CONFIDENTIAL INFORMATION WHICH MAY BE USED ONLY FOR ITS BENEFIT. THE DISCLOSURE OF THESE DRAWINGS TO UNAUTHORIZED PERSONS IS STRICTLY PROHIBITED. THIS DOCUMENT AND ALL COPIES MUST BE RETURNED UPON DEMAND.
© COPYRIGHT KAWNEER COMPANY, INC., 2014

STEP - 6 PERIMETERS WHERE APPLICABLE

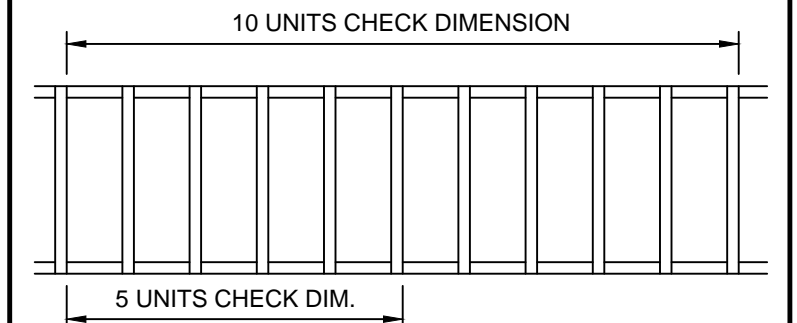
INSTALL PERIMETER MEMBERS PER APPROVED SHOP DRAWINGS. PERIMETER MEMBERS CAN OCCUR AT HEAD, SILL OR JAMB CONDITIONS.



STEP - 7 INSTALL VERTICAL MULLIONS

DIMENSION BUILDUP CHECK

CHECK OVERALL FRAME DIMENSIONS ABOUT EVERY FIVE MULLIONS ON LONG RUNS. THIS IS TO AVOID DIMENSION BUILDUP.



1620 SSG INSTALLATION INSTRUCTIONS

Product Engineering & Development

STEP - 7 INSTALL VERTICAL MULLIONS

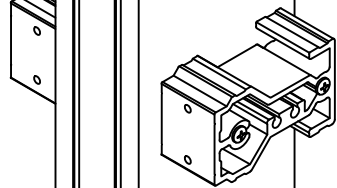
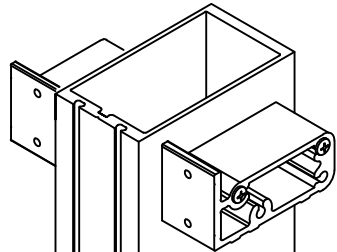
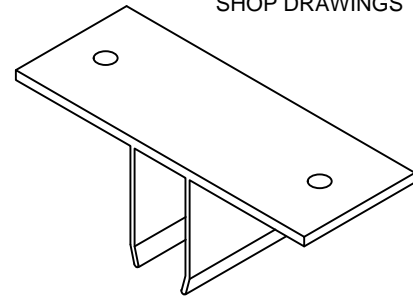
STRUCTURAL GLAZED VERTICALS

DETAILS SIMILAR FOR "CAPTURED VERTICALS AT JAMB"

"F" OR "T" ANCHORS WHERE APPLICABLE

"F" AND "T" ANCHOR FASTENER LOCATIONS PER APPROVED SHOP DRAWINGS

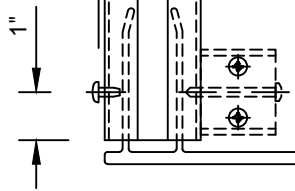
THESE SHEAR BLOCKS MAY NEED TO BE REMOVED TO INSTALL ANCHOR FASTENERS THAT MIGHT BE LOCATED CLOSE TO THE MULLION



"F" OR "T" ANCHORS FASTENER FASTENERS LOCATIONS PER SHOP DRAWINGS

AT MULLION JAMB SIDE, APPLY (2) 128407 SCREWS AS SHOWN TO CENTER F-CLIPS AS REQUIRED.

1/8"

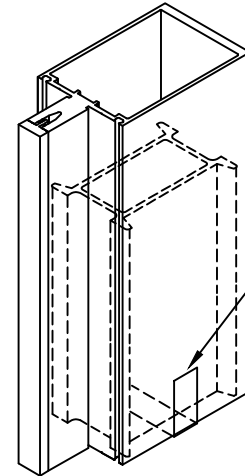


SILL SHOWN HEAD SIMILAR

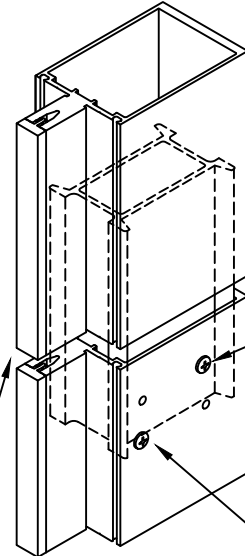
STEP - 7 INSTALL VERTICAL MULLIONS

VERTICAL SPLICE JOINTS WHERE APPLICABLE.

CAPTURED VERTICALS AT JAMB



SLEEVE IS FACTORY TAPED INTO THE BOTTOM OF THE TOP VERTICAL.

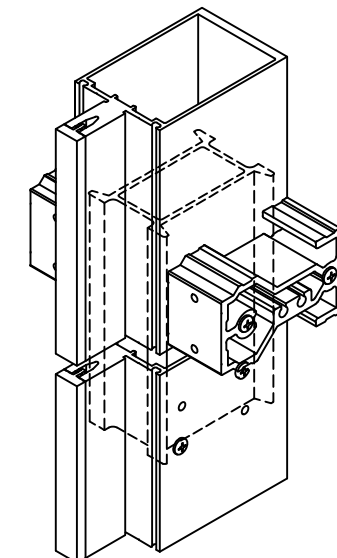


REMOVE THE TAPE AND LET THE SLEEVE SLIDE DOWN TO THE FACTORY APPLIED STOP SCREW

FIELD APPLIED FIXING SCREW 128348 #10 x 1 1/4" FLAT HEAD SELF DRILLING.

SHOP APPLIED STOP SCREW 028651 #10 x 3/4" PAN HEAD TYPE AB

USE TEMPORARY SPACERS FOR JOINT DIMENSION

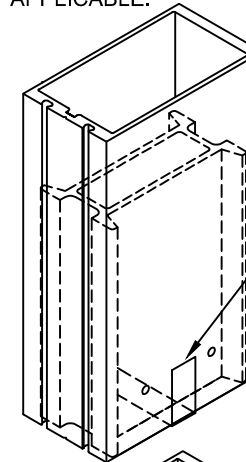


SPLICE JOINT WHEN IT OCCURS AT A HORIZONTAL.

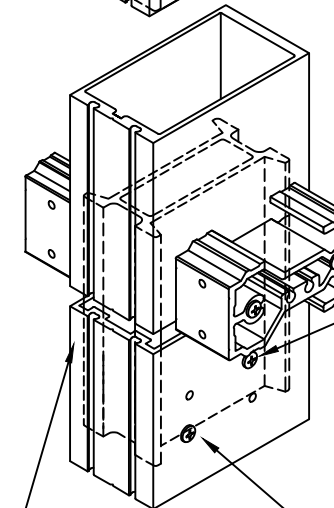
STEP - 7 INSTALL VERTICAL MULLIONS

VERTICAL SPLICE JOINTS WHERE APPLICABLE.

STRUCTURAL GLAZED VERTICALS



SLEEVE IS FACTORY TAPED INTO THE BOTTOM OF THE TOP VERTICAL.



REMOVE THE TAPE AND LET THE SLEEVE SLIDE DOWN TO THE FACTORY APPLIED STOP SCREW

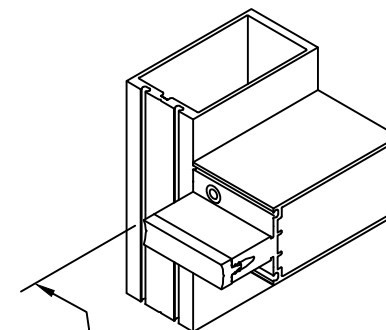
FIELD APPLIED FIXING SCREW 128348 #10 x 1 1/4" FLAT HEAD SELF DRILLING.

SHOP APPLIED STOP SCREW 028651 #10 x 3/4" PAN HEAD TYPE AB

USE TEMPORARY SPACERS FOR JOINT DIMENSION

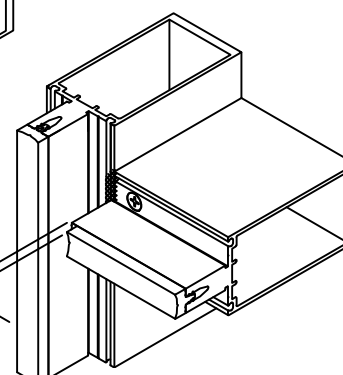
STEP - 8 INSTALL HEAD/SILL AND INTERMEDIATE HORIZONTALS

STRUCTURAL GLAZED VERTICALS WITH TUBULAR HORIZONTAL



THERMAL BREAK TO BE SAME LENGTH AS HORIZONTAL AT SSG VERTICAL

THERMAL BREAK TO BE 1/4" SHORT AT EACH END OF HORIZONTAL



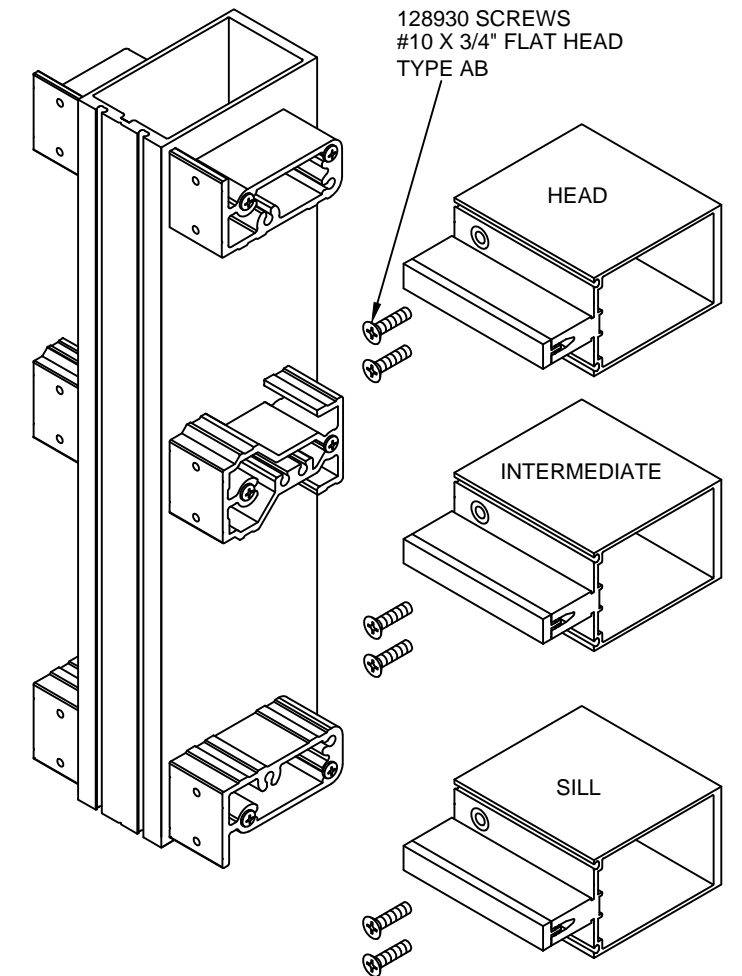
CONFIDENTIAL AND PROPRIETARY INFORMATION KAWNEER COMPANY INC.

THESE DRAWINGS ARE THE SOLE AND EXCLUSIVE PROPERTY OF KAWNEER AND CONTAIN SENSITIVE, PRIVILEGED OR CONFIDENTIAL INFORMATION WHICH MAY BE USED ONLY FOR ITS BENEFIT. THE DISCLOSURE OF THESE DRAWINGS TO UNAUTHORIZED PERSONS IS STRICTLY PROHIBITED. THIS DOCUMENT AND ALL COPIES MUST BE RETURNED UPON DEMAND. © COPYRIGHT KAWNEER COMPANY, INC., 2014

STEP - 8 INSTALL HEAD/SILL AND INTERMEDIATE HORIZONTALS

STRUCTURAL GLAZED VERTICALS WITH TUBULAR HORIZONTAL

DETAILS SAME FOR "CAPTURED VERTICAL AT JAMB"



128930 SCREWS #10 X 3/4" FLAT HEAD TYPE AB

HEAD

INTERMEDIATE

SILL

KAWNEER

1620 SSG INSTALLATION INSTRUCTIONS

Product Engineering & Development

95525-005
02/21/14

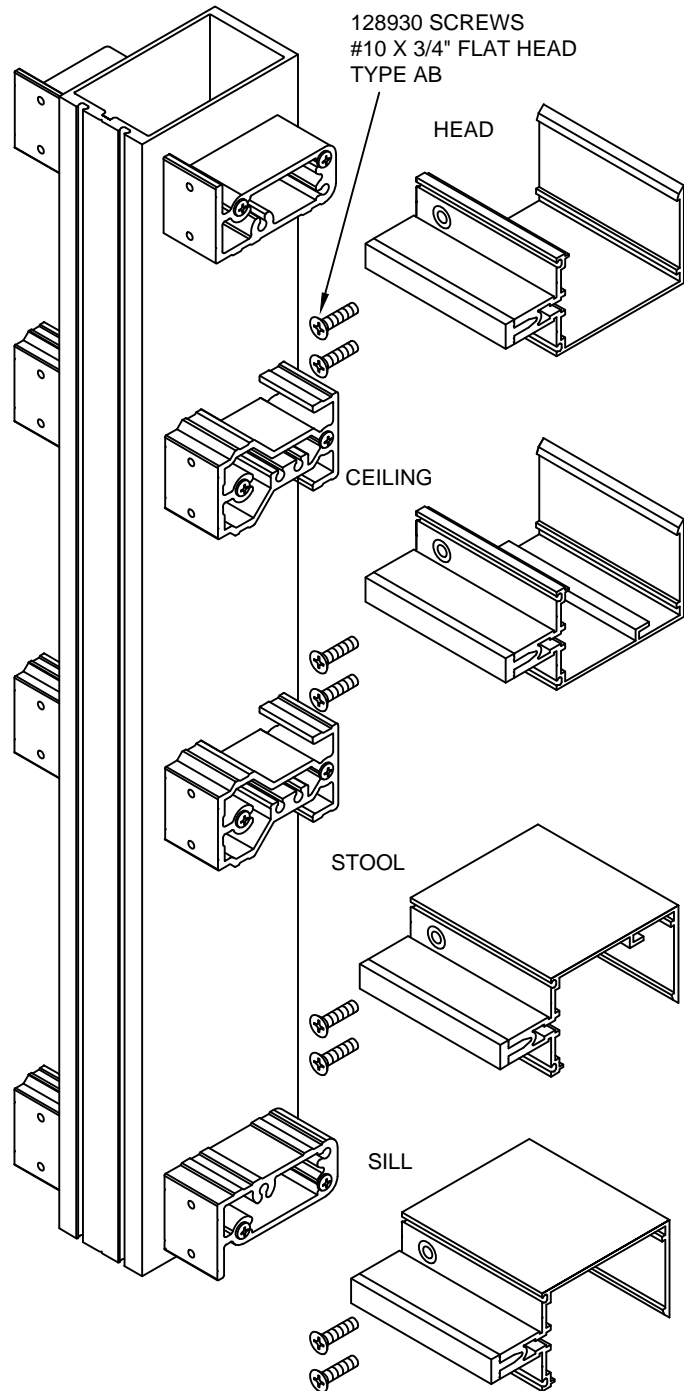
178971 SHEET 04 OF 12

STEP - 8 INSTALL HEAD/SILL AND INTERMEDIATE HORIZONTALS

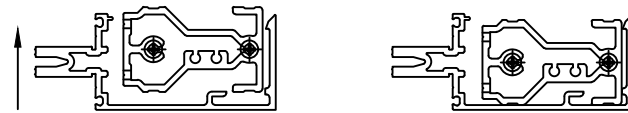
OPEN BACK HORIZONTALS AND LAST BAY HORIZONTALS.
FILLER AVAILABLE WHEN OPEN BACK IS EXPOSED AND AT EYE LEVEL.

STRUCTURAL GLAZED VERTICALS

DETAILS SAME FOR "CAPTURED VERTICALS AT JAMB" EXCEPT HORIZONTAL THERMAL BREAK CUT 1/4" SHORT EACH END.



INSTALLING CEILING INTERMEDIATE OPEN BACK HORIZONTAL



INSTALLING STOOL INTERMEDIATE OPEN BACK HORIZONTAL

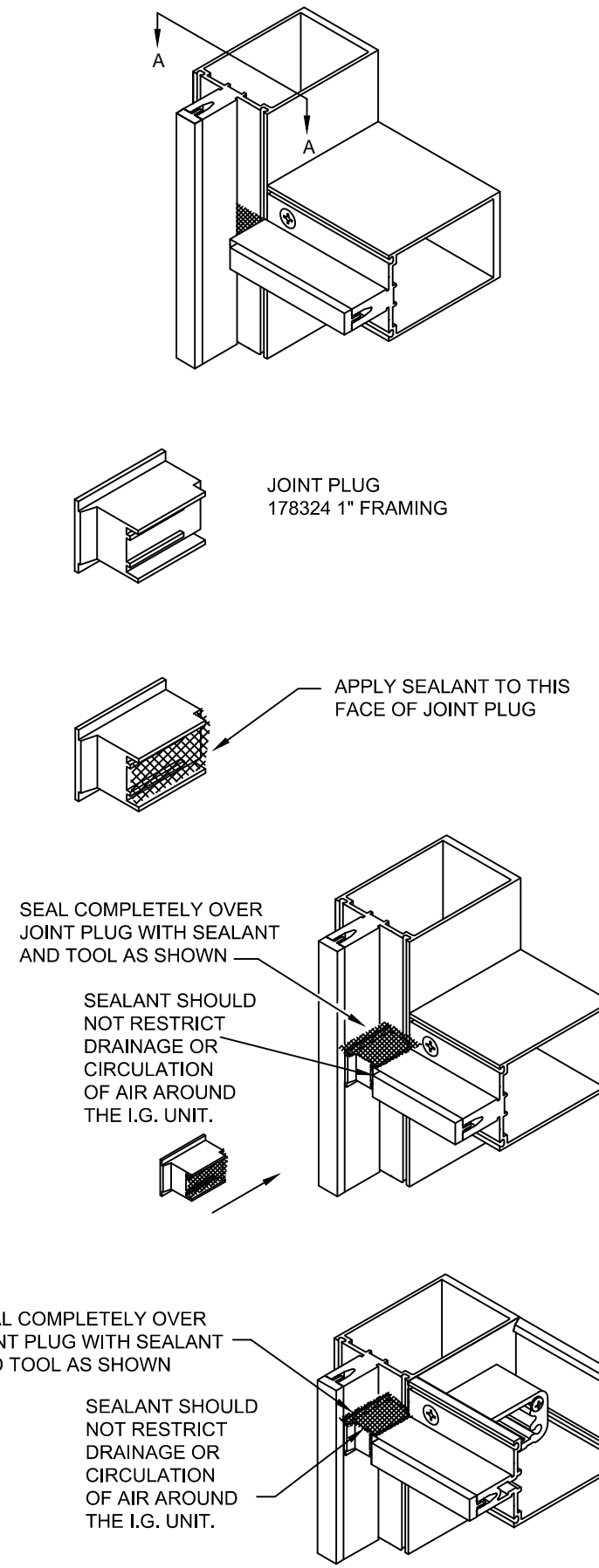
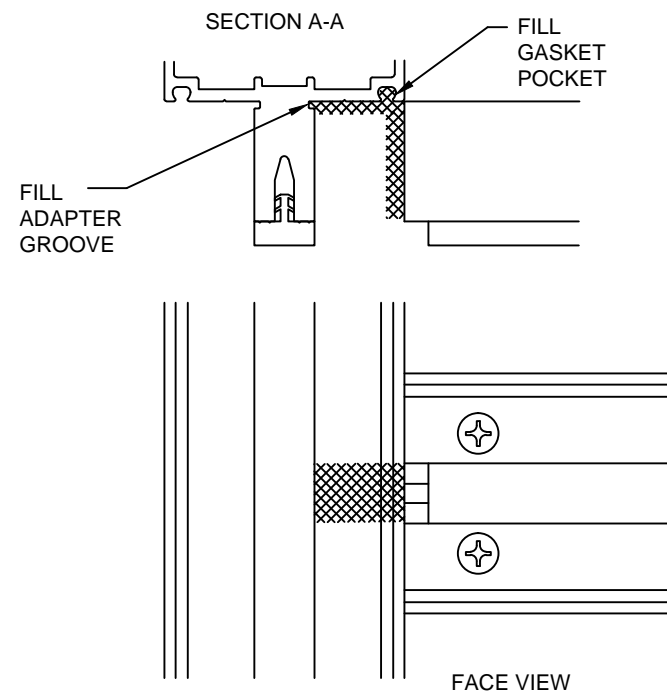


STEP - 9 INSTALL JOINT PLUGS

CAPTURED VERTICALS AT JAMB

ALL SURFACES AND GROOVES MUST BE CLEANED PER THE SEALANT MANUFACTURER'S RECOMMENDATIONS.

JUST BEFORE INSTALLING JOINT PLUGS APPLY SEALANT AS SHOWN FILLING GASKET POCKET AND ADAPTER GROOVE.

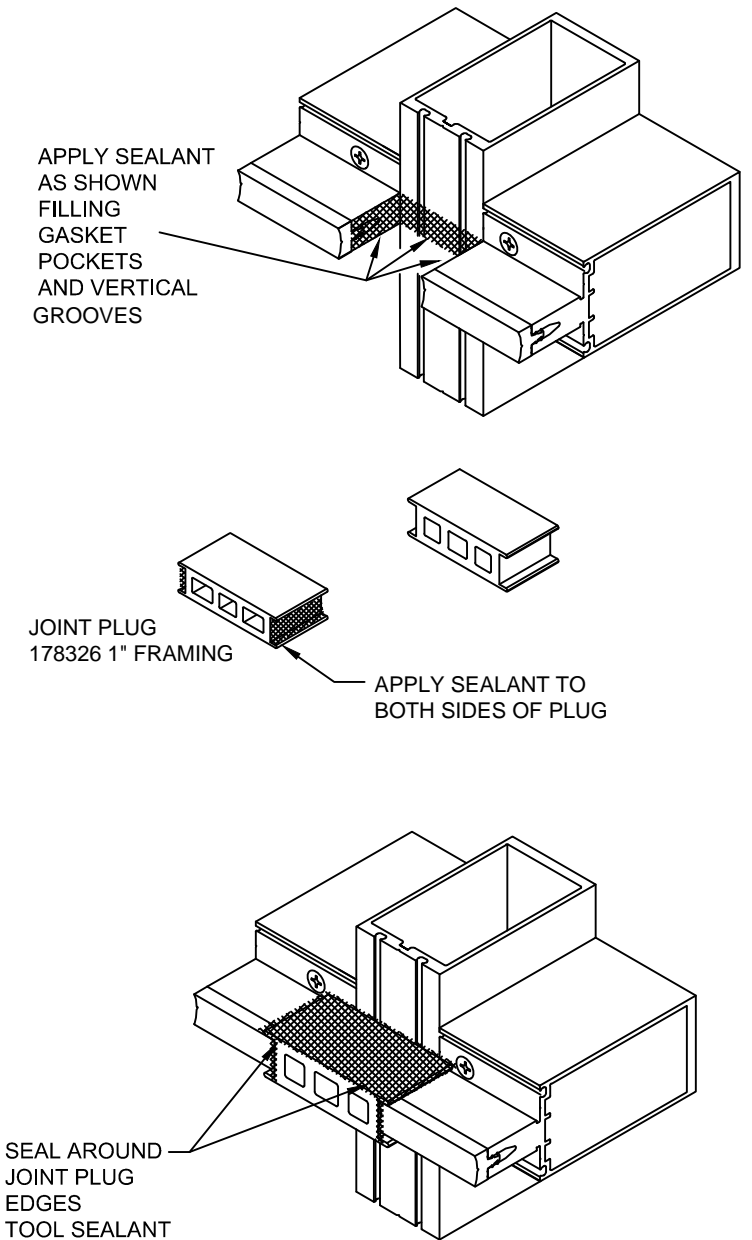


CONFIDENTIAL AND PROPRIETARY INFORMATION
KAWNEER COMPANY INC.

THESE DRAWINGS ARE THE SOLE AND EXCLUSIVE PROPERTY OF KAWNEER AND CONTAIN SENSITIVE, PRIVILEGED OR CONFIDENTIAL INFORMATION WHICH MAY BE USED ONLY FOR ITS BENEFIT. THE DISCLOSURE OF THESE DRAWINGS TO UNAUTHORIZED PERSONS IS STRICTLY PROHIBITED. THIS DOCUMENT AND ALL COPIES MUST BE RETURNED UPON DEMAND.
© COPYRIGHT KAWNEER COMPANY, INC., 2014

STEP - 9 INSTALL JOINT PLUGS

STRUCTURAL GLAZED VERTICALS



KAWNEER 1620 SSG
INSTALLATION
INSTRUCTIONS

Product Engineering & Development

95525-005
02/21/14

CONFIDENTIAL AND PROPRIETARY INFORMATION
KAWNEER COMPANY INC.

THESE DRAWINGS ARE THE SOLE AND EXCLUSIVE PROPERTY OF KAWNEER AND CONTAIN SENSITIVE, PRIVILEGED OR CONFIDENTIAL INFORMATION WHICH MAY BE USED ONLY FOR ITS BENEFIT. THE DISCLOSURE OF THESE DRAWINGS TO UNAUTHORIZED PERSONS IS STRICTLY PROHIBITED. THIS DOCUMENT AND ALL COPIES MUST BE RETURNED UPON DEMAND.
© COPYRIGHT KAWNEER COMPANY, INC., 2014

STEP - 10 INSTALL SPANDREL ADAPTERS WHERE APPLICABLE

CAPTURED VERTICALS AT JAMB

ALL SURFACES AND GROOVES MUST BE CLEANED PER THE SEALANT MANUFACTURER'S RECOMMENDATIONS.

JUST BEFORE INSTALLING SPANDREL ADAPTERS FACE SEAL JOINTS AT ALL 4 CORNERS. ALSO SEAL SCREW HEAD AT TOP HALF OF HORIZONTAL

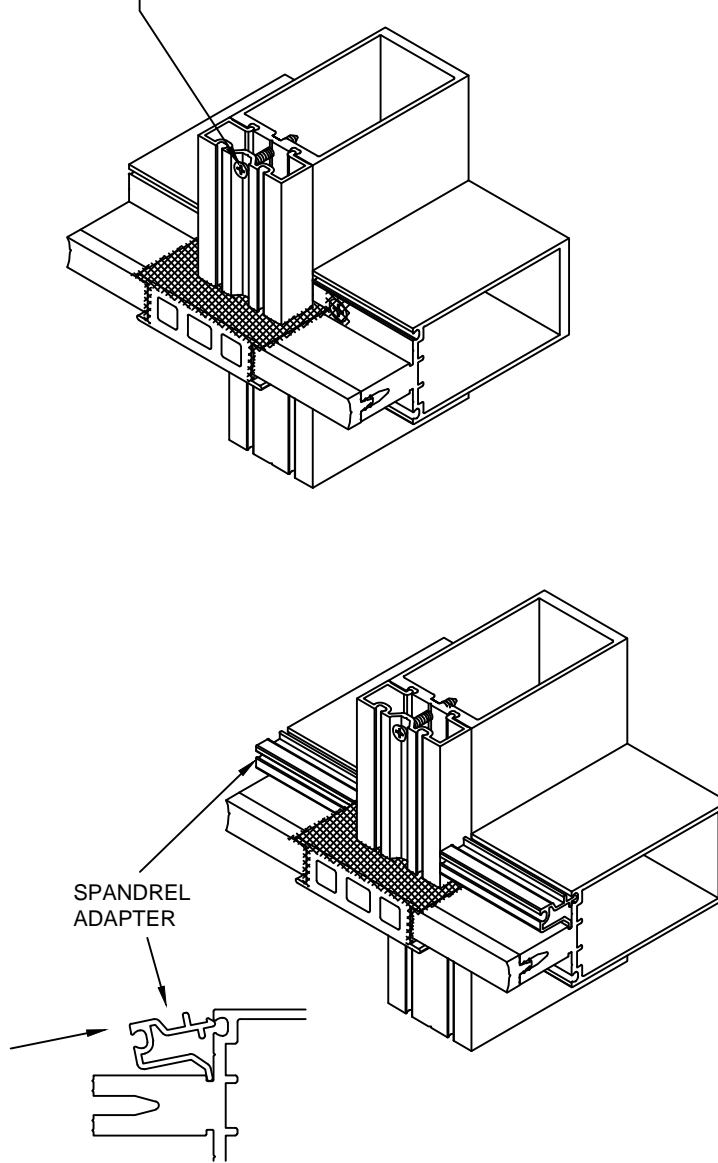
THERMAL BREAK TO BE 1/4" SHORT AT EACH END OF HORIZONTAL

STRUCTURAL GLAZED VERTICALS

STEP - 10 INSTALL SPANDREL ADAPTERS WHERE APPLICABLE

INSTALL VERTICAL ADAPTER WITH 128348 SCREWS #10 X 1-1/4" FLAT HEAD SELF DRILLING SCREWS. LOCATE A MAXIMUM 6" AND A MINIMUM 4" FROM EACH END AND 9" ON CENTER

AT STEEL REINFORCING USE 128401 #10 X 1" FLAT HEAD TYPE B SCREW. DRILL .154 DIA. (#23 DRILL) INTO MULLION USING ADAPTER HOLES AS A PILOT

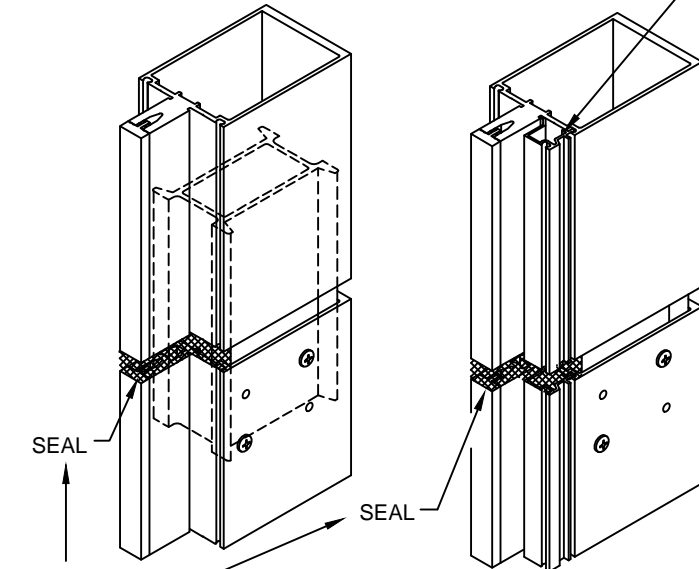


SPANDREL ADAPTER

STEP - 11 SEAL INTERIOR OF VERTICAL SPLICE JOINTS

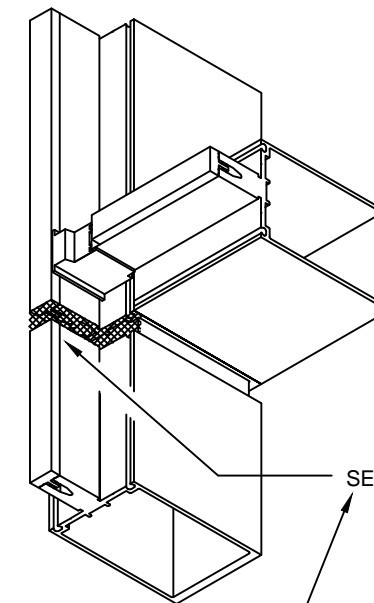
CAPTURED VERTICALS AT JAMB

SPANDREL ADAPTERS

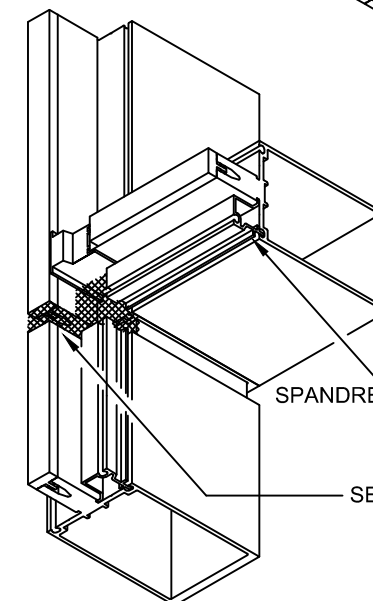


APPLY BOND BREAKER TAPE TO FACE OF SLEEVE

ALL SURFACES AND GROOVES MUST BE CLEANED PER THE SEALANT MANUFACTURER'S RECOMMENDATIONS.



APPLY BOND BREAKER TAPE TO FACE OF SLEEVE



SPANDREL ADAPTER

STEP - 12 INSTALL INTERIOR GLAZING GASKETS

GASKETS SHOULD BE INSTALLED JUST PRIOR TO GLASS TO AVOID CONTAMINATION BY JOB SITE DEBRIS. GASKET GROOVES AND POCKETS SHOULD BE CLEAN.

IN TEMPERATURES COLDER THAN 50° F, ARRANGEMENTS SHOULD BE MADE TO WARM GASKETS BEFORE INSTALLATION. THIS WILL PREVENT EXCESSIVE WILL PREVENT EXCESSIVE GLAZING PRESSURE ON THE GLASS DUE TO COLD, STIFF RUBBER GASKETS.

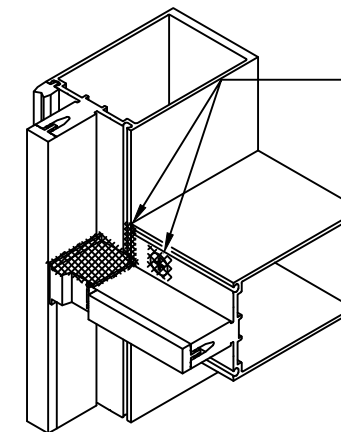
GASKETS CAN BECOME DEFORMED DURING STORAGE IN CARTONS. THEY SHOULD BE REMOVED FROM CARTONS SEVERAL HOURS PRIOR TO GLAZING AND LAID FLAT OR HUNG TO ALLOW RECOVERY OF CORRECT SHAPE. TEMPERATURES SHOULD BE AT LEAST 50° F TO ALLOW THIS.

027850 GASKET INSTALLED LENGTH TO BE DAYLITE OPENING. GASKETS TO BE CUT LONG FOR SOME "CROWDIN". GASKETS SHOULD NEVER BE "STRETCHED TO FIT".

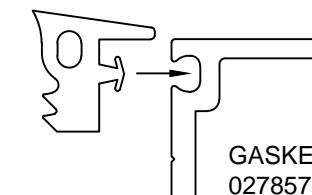
"CROWDIN" TO BE 1/8" PER FOOT UP TO 5'0", 3/16" PER FOOT UP TO 8'0", 1/4" PER FOOT OVER 8'0".

GASKET'S LENGTH AT STRUCTURAL GLAZED VERTICALS TO BE DAYLITE OPENING PLUS 7/8".

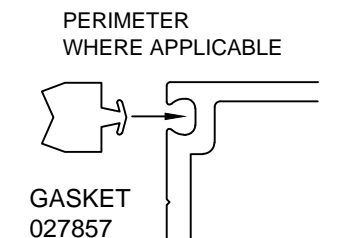
JUST BEFORE INSTALLING VERTICAL AND HORIZONTAL GASKETS FACE SEAL JOINTS AT ALL 4 CORNERS. ALSO SEAL SCREW HEAD AT TOP HALF OF HORIZONTAL



TYPICAL



GASKET 027857



GASKET 027857

ALL SURFACES AND GROOVES MUST BE CLEANED PER THE SEALANT MANUFACTURER'S RECOMMENDATIONS.

PERIMETER WHERE APPLICABLE



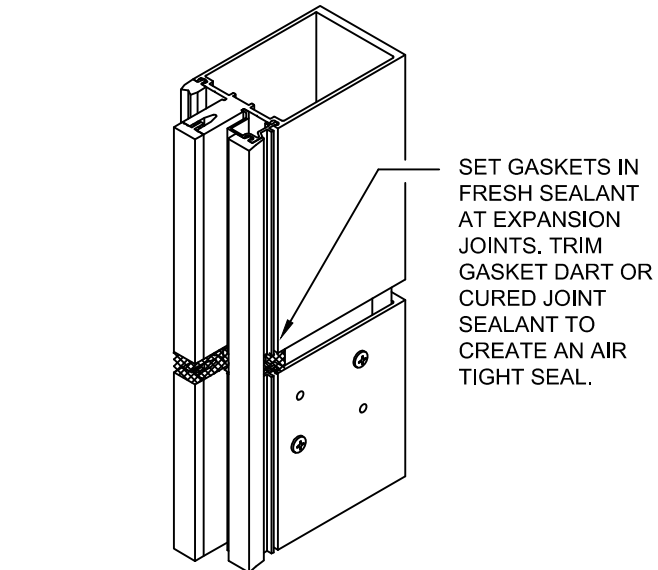
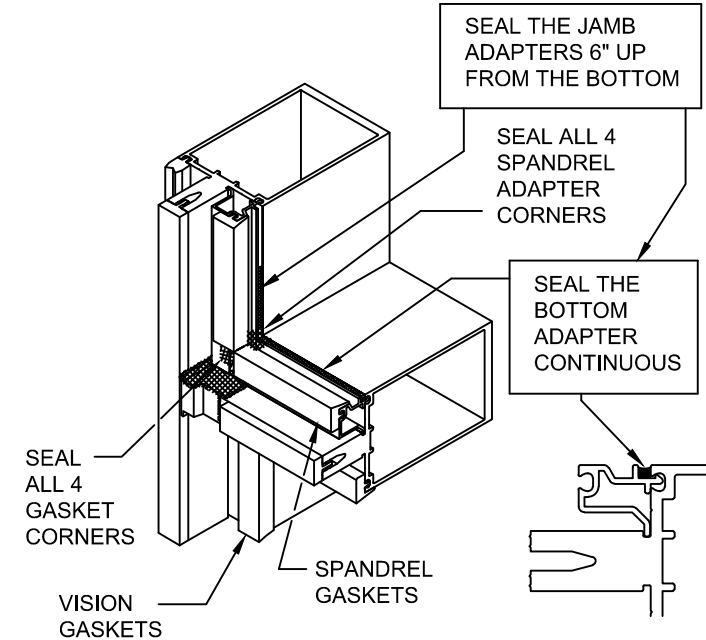
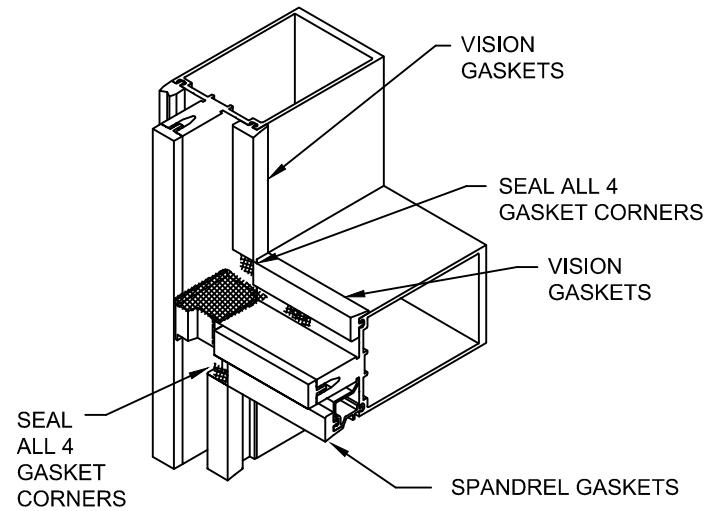
1620 SSG
INSTALLATION
INSTRUCTIONS

Product Engineering & Development

95525-005
02/21/14

STEP - 12 INSTALL INTERIOR GLAZING GASKETS

CAPTURED VERTICALS AT JAMB

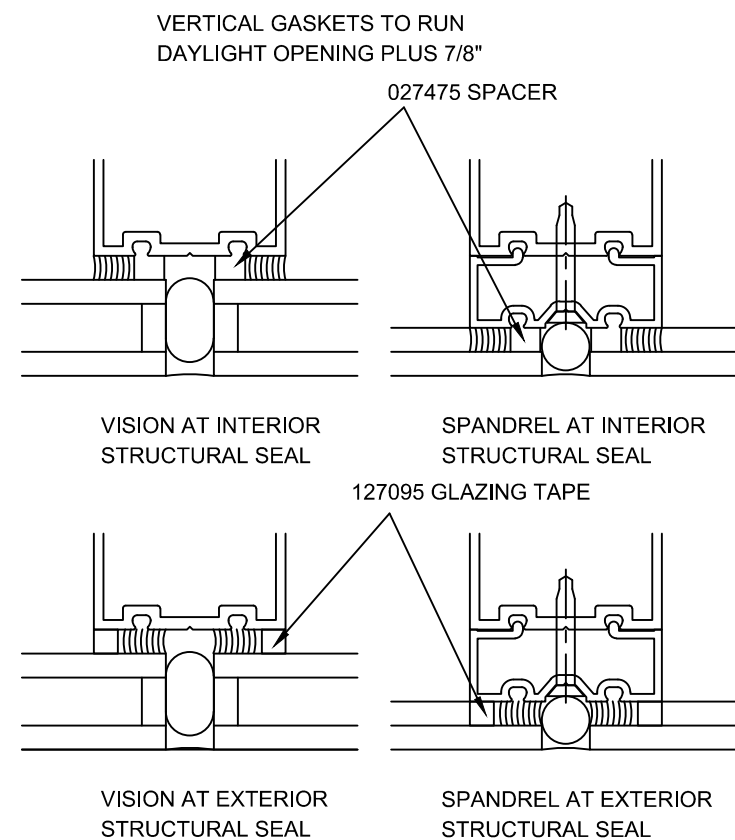
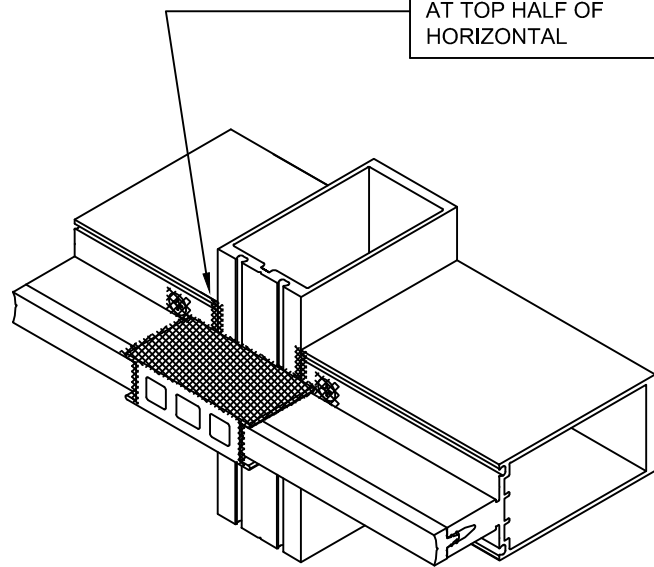


STEP - 12 INSTALL INTERIOR GLAZING GASKETS

STRUCTURAL GLAZED VERTICALS

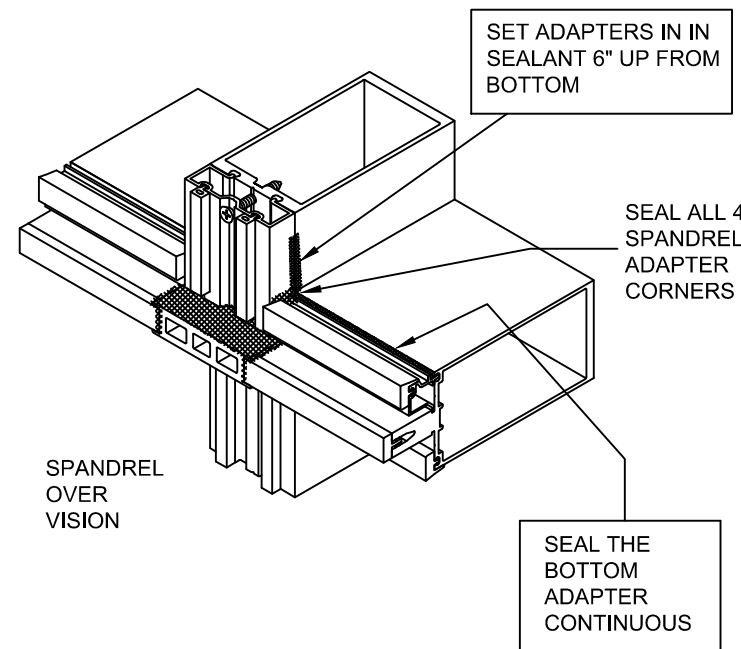
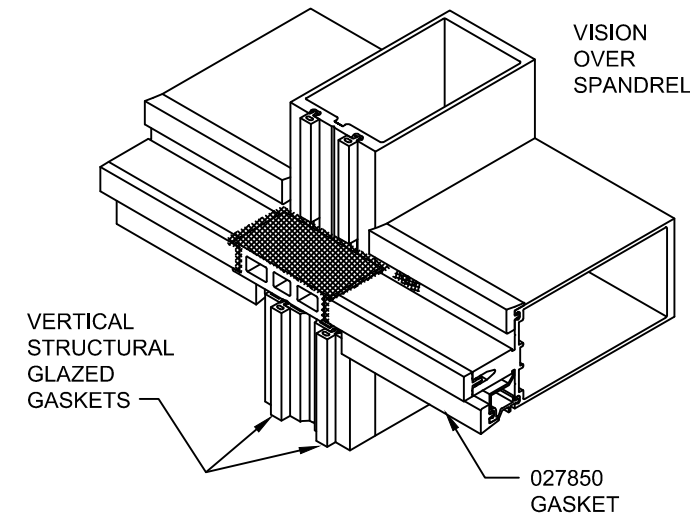
ALL SURFACES AND GROOVES MUST BE CLEANED PER THE SEALANT MANUFACTURER'S RECOMMENDATIONS.

JUST BEFORE INSTALLING VERTICAL AND HORIZONTAL GASKETS FACE SEAL JOINTS AT ALL 4 CORNERS. ALSO SEAL SCREW HEAD AT TOP HALF OF HORIZONTAL



STEP - 12 INSTALL INTERIOR GLAZING GASKETS

STRUCTURAL GLAZED VERTICALS



CONFIDENTIAL AND PROPRIETARY INFORMATION
KAWNEER COMPANY INC.

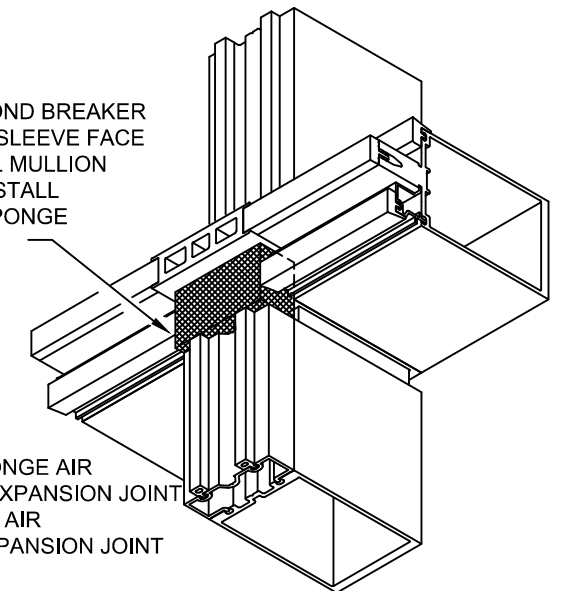
THESE DRAWINGS ARE THE SOLE AND EXCLUSIVE PROPERTY OF KAWNEER AND CONTAIN SENSITIVE, PRIVILEGED OR CONFIDENTIAL INFORMATION WHICH MAY BE USED ONLY FOR ITS BENEFIT. THE DISCLOSURE OF THESE DRAWINGS TO UNAUTHORIZED PERSONS IS STRICTLY PROHIBITED. THIS DOCUMENT AND ALL COPIES MUST BE RETURNED UPON DEMAND.
© COPYRIGHT KAWNEER COMPANY, INC., 2014

STEP - 13 INSTALL INTERIOR SPONGE AIR SEALS

1" FRAMING MEMBERS

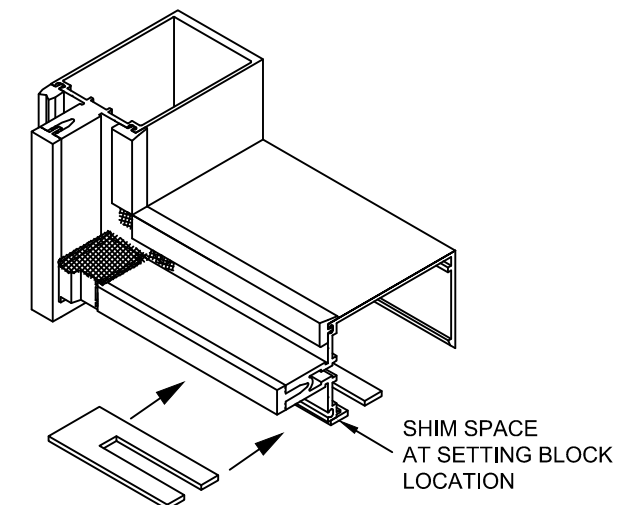
APPLY BOND BREAKER TAPE TO SLEEVE FACE AND SEAL MULLION JOINT. INSTALL 178337 SPONGE AIR SEAL

USE 178337 SPONGE AIR SEAL FOR 1/4" EXPANSION JOINT
178338 SPONGE AIR SEAL FOR 1" EXPANSION JOINT



STEP - 14 SHIM HORIZONTALS

SHIM ALL SILL HORIZONTALS AT SETTING BLOCK LOCATIONS PER APPROVED SHOP DRAWINGS. LOCATE SHIMS TO ALLOW FOR SUFFICIENT SUPPORT TO THE SILL HORIZONTAL AS WELL AS PROVIDING ADEQUATE SPACE TO APPLY THE PRIMARY PERIMETER SEAL ALONG THE SHOULDER OF THE MILLION.



1620 SSG
INSTALLATION
INSTRUCTIONS

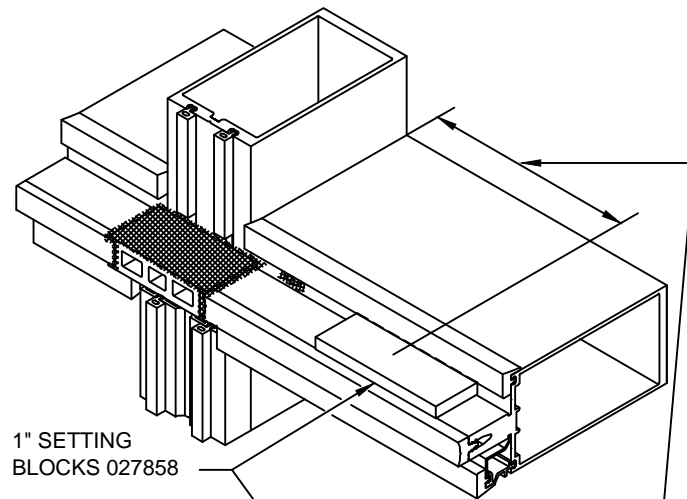
Product Engineering & Development

95525-005
02/21/14

STEP - 15 INSTALL SETTING BLOCKS

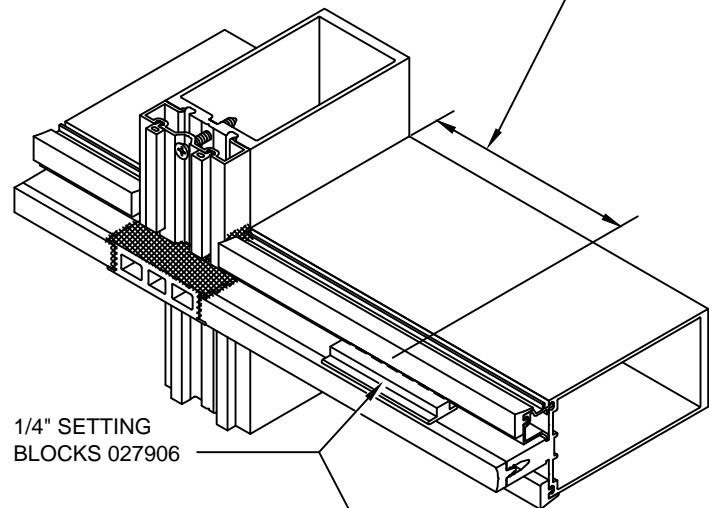
STRUCTURAL GLAZED VERTICALS

DETAILS SIMILAR FOR "CAPTURED VERTICALS AT JAMB"



1" SETTING BLOCKS 027858

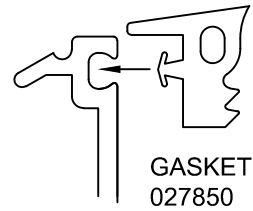
LOCATE SETTING BLOCKS PER APPROVED SHOP DRAWINGS OR DEAD LOAD CHARTS



1/4" SETTING BLOCKS 027906

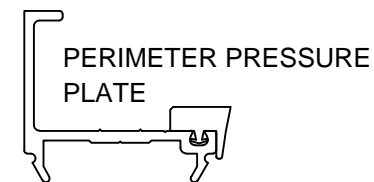
STEP - 16 INSTALL EXTERIOR GASKETS INTO PRESSURE PLATES

REFERENCE GASKET NOTES IN STEP - 11 SAME NOTES APPLY.

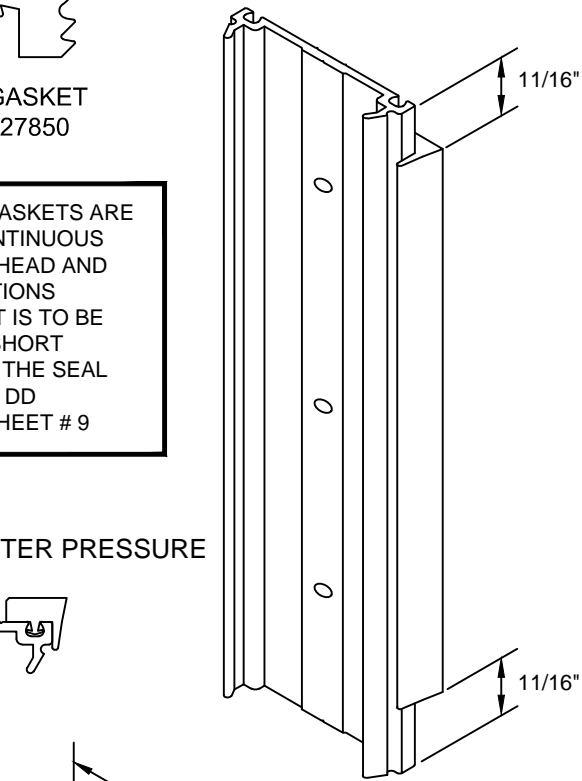


GASKET 027850

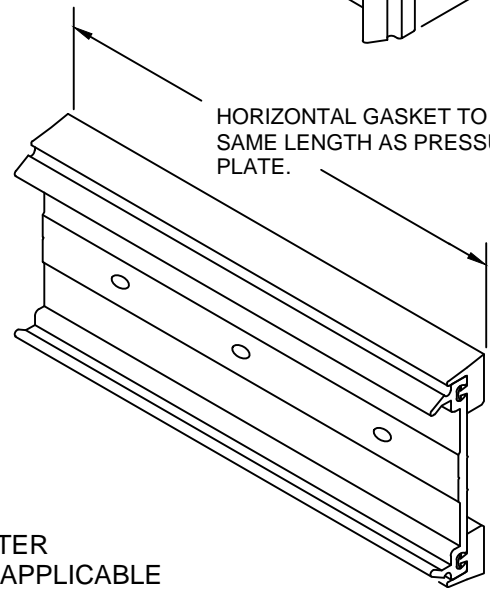
VERTICAL GASKETS ARE TO RUN CONTINUOUS EXCEPT AT HEAD AND SILL CONDITIONS THE GASKET IS TO BE CUT 11/16" SHORT THIS IS FOR THE SEAL AT SECTION DD STEP - 18 SHEET # 9



PERIMETER PRESSURE PLATE

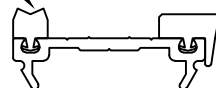


HORIZONTAL GASKET TO BE SAME LENGTH AS PRESSURE PLATE.



PERIMETER WHERE APPLICABLE

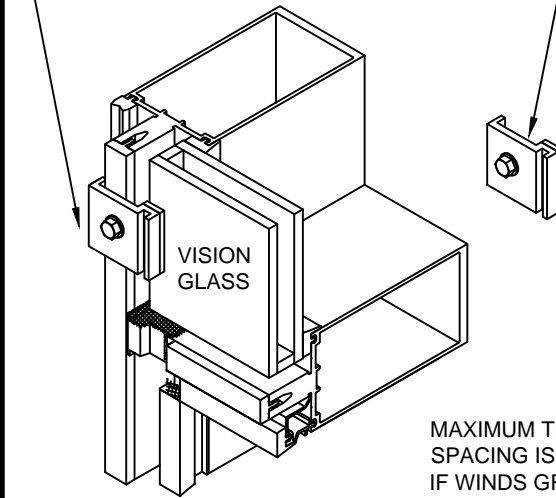
GASKET 027857 AT ONE SIDE. DO NOT CUT 1/2" SHORT.



STEP - 17 INSTALL GLASS

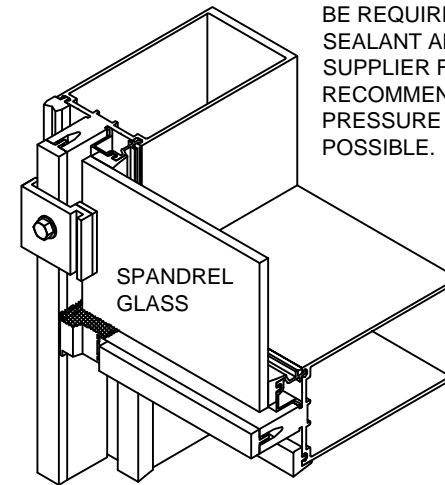
CAPTURED VERTICALS AT JAMB

USE 162350 GLAZING TEMPORARIES AS REQUIRED. USE 128406 SCREWS



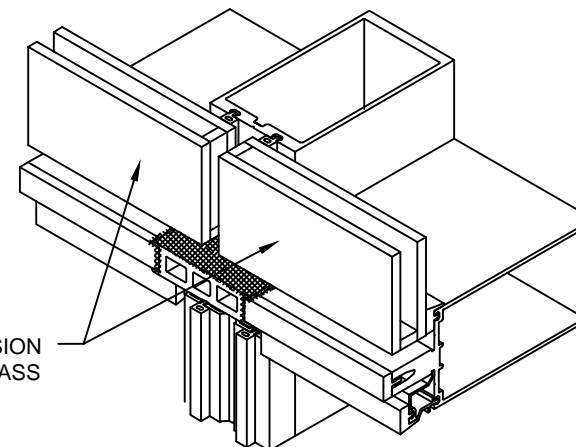
VISION GLASS

MAXIMUM TEMPORARY SPACING IS 30". IF WINDS GREATER THAN 50 MPH (80KPH) ARE EXPECTED, ADDITIONAL TEMPORARIES MAY BE REQUIRED. CONSULT YOUR SEALANT AND/OR INFILL SUPPLIER FOR SPACING RECOMMENDATIONS. INSTALL PRESSURE PLATES WHERE POSSIBLE.



SPANDREL GLASS

STRUCTURAL GLAZED VERTICALS

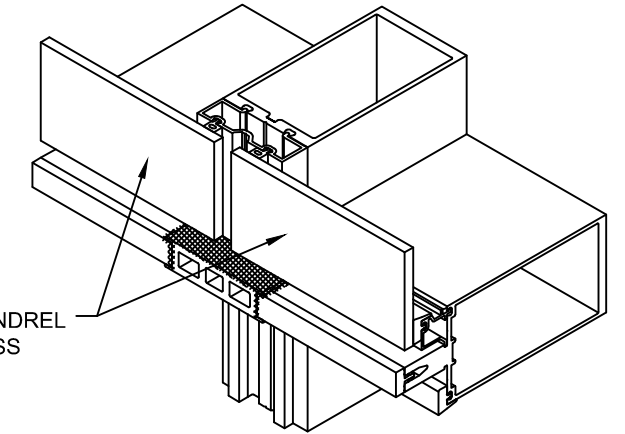


VISION GLASS

CONFIDENTIAL AND PROPRIETARY INFORMATION
KAWNEER COMPANY INC.

THESE DRAWINGS ARE THE SOLE AND EXCLUSIVE PROPERTY OF KAWNEER AND CONTAIN SENSITIVE, PRIVILEGED OR CONFIDENTIAL INFORMATION WHICH MAY BE USED ONLY FOR ITS BENEFIT. THE DISCLOSURE OF THESE DRAWINGS TO UNAUTHORIZED PERSONS IS STRICTLY PROHIBITED. THIS DOCUMENT AND ALL COPIES MUST BE RETURNED UPON DEMAND.
© COPYRIGHT KAWNEER COMPANY, INC., 2014

STEP - 17 INSTALL GLASS



SPANDREL GLASS

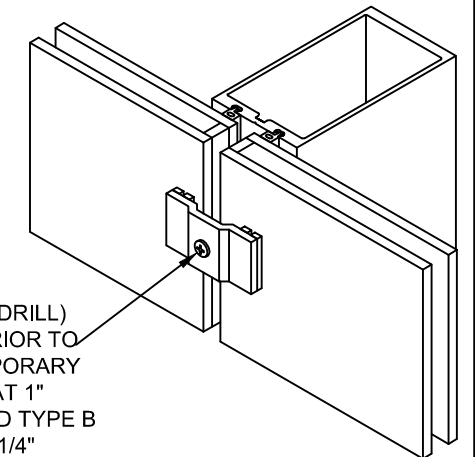
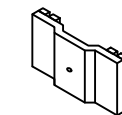
STRUCTURAL GLAZED VERTICALS

TEMPORARY RETAINERS FOR STRUCTURAL GLAZED VERTICALS.

THE LOCATION OF TEMPORARY EXTERIOR INFILL RETAINERS SHOULD BE AT A MAXIMUM SPACING OF 30" ON CENTER.

IF WINDS GREATER THAN 50 MPH (80KPH) ARE EXPECTED, ADDITIONAL TEMPORARIES MAY BE REQUIRED. CONSULT YOUR SEALANT AND/OR INFILL SUPPLIER FOR SPACING RECOMMENDATIONS.

GLAZING TEMPORARY 162353



PRE-DRILL A 0.182 (#14 DRILL) HOLE INTO MULLION PRIOR TO INSTALL GLAZING TEMPORARY WITH SCREWS 128400 AT 1" GLASS #12 X 2-1/4 PH HD TYPE B USE SCREW 128284 AT 1/4" GLASS #12 X 1-1/2 FL HD TYPE AB CORNERS, RETAINERS SHOULD BE MADE FROM A GOOD QUALITY HARDWOOD. THESE RETAINERS ARE NOT SUPPLIED BY KAWNEER.



1620 SSG
INSTALLATION
INSTRUCTIONS

Product Engineering & Development

95525-005
02/21/14

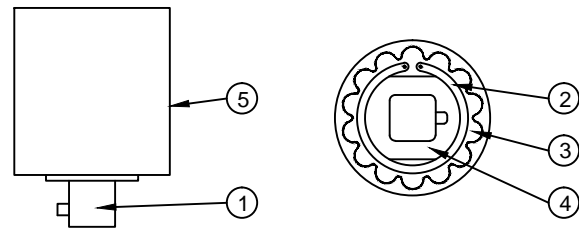
STEP - 18 INSTALL EXTERIOR PRESSURE PLATES



RECOMMEND USING TORQUE LIMIT TOOL 162399 SEE NOTE.

HOW TO SET TORQUE LIMIT

1. ATTACH ANY CALIBRATED TORQUE INDICATOR TO OUTPUT STUB (1) AND DETERMINE PRESENT TORQUE SETTING WHILE HOLDING THE BODY (5), OR VICEVERSA.
2. REMOVE SNAP RING (2) AND LOCKING PLATE (3).
3. ADJUST NUT (4) WITH OPENEND WRENCH : CLOCKWISE TO INCREASE TORQUE, COUNTER CLOCKWISE TO DECREASE TORQUE.
4. OBTAIN NEW TORQUE READING WITH THE CALIBRATED TORQUE INDICATOR. REPEAT PRECEDING STEP 3 IF MORE ADJUSTMENT IS NECESSARY TO REACH DESIRED LIMIT.
5. REPLACE LOCKING PLATE INTO NOTCHES AND INSTALL SNAP RING. IF LOCKING PLATE DOES NOT "SEAT", MOVE THE ADJUSTING NUT SLIGHTLY UNTIL IT DROPS IN PLACE. THE DIRECTION IS BEST DETERMINED BY WHETHER A MINIMUM TORQUE APPLICATION OR A MAXIMUM ONE IS DESIRED.



INSTALL PRESSURE PLATES USING SCREWS 128406 1/4-14 X 1" HEX WASHER HEAD TYPE AB.

SCREWS ARE TO BE LOCATED 9" ON CENTER. ALWAYS LOCATE A SCREW AS CLOSE AS POSSIBLE TO A HORIZONTAL JOINT. THIS WILL PROVIDE MAXIMUM PRESSURE FOR THE CRITICAL JOINT SEALS.

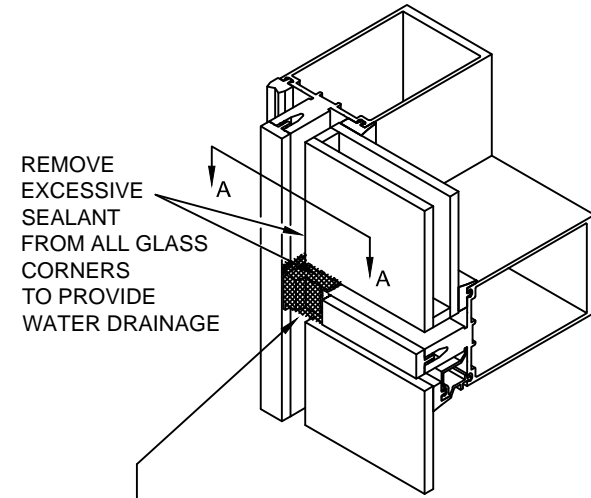
INSTALL HORIZONTAL PRESSURE PLATES WITH WEEP HOLES TOWARDS TOP OF HORIZONTAL.

AT EACH HORIZONTAL AND VERTICAL PRESSURE PLATE INSTALL TWO SCREWS PART WAY, THEN INSTALL THE THIRD SCREW ALL THE WAY, AND THEN TIGHTEN THE FIRST TWO SCREWS. THIS ELIMINATES LATERAL WALKING OF THE PRESSURE PLATE POSITION.

TORQUE ALL SCREWS TO 95 TO 100 INCH POUNDS. DURING COLD WEATHER, TORQUE SCREWS TO 50 INCH POUNDS UNTIL ALL 4 SIDES HAVE BEEN CLAMPED. THEN TORQUE SCREWS TO 95 TO 100 INCH POUNDS.

STEP- 18 INSTALL EXTERIOR PRESSURE PLATES

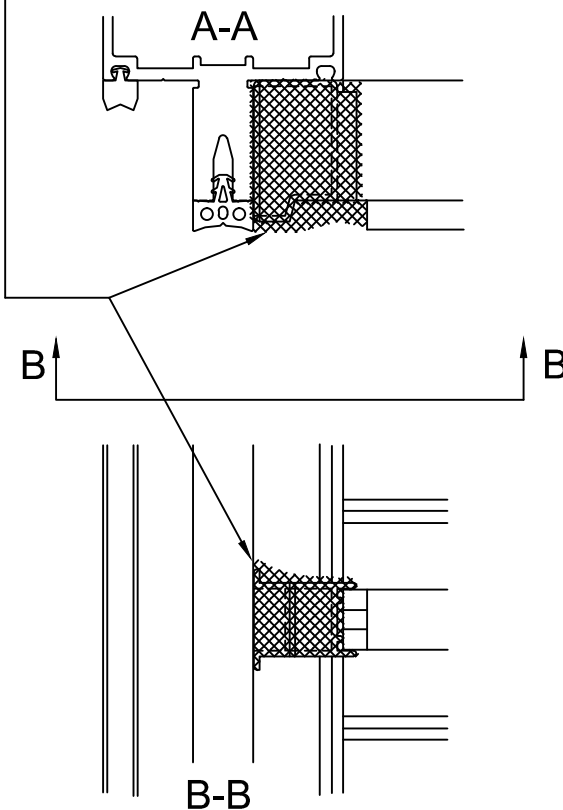
CAPTURED VERTICALS AT JAMB



REMOVE EXCESSIVE SEALANT FROM ALL GLASS CORNERS TO PROVIDE WATER DRAINAGE

JUST BEFORE INSTALLING VERTICAL PRESSURE PLATES APPLY A GENEROUS AMOUNT OF SEALANT TO THE JOINT PLUG FACE FILLING JOINTS AS SHOWN.

CLEAN JOINT PER SEALANT MANUFACTURER'S RECOMMENDATIONS

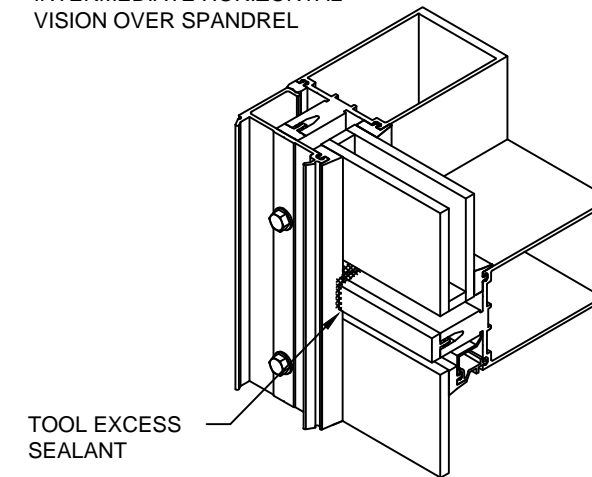


STEP- 18 INSTALL EXTERIOR PRESSURE PLATES

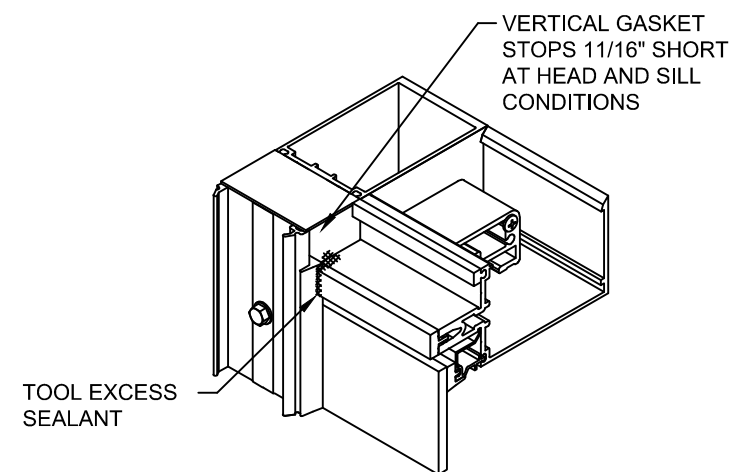
INSTALL VERTICAL PRESSURE PLATES AT JAMB

NOTE THE TORQUE LIMIT TOOL WAS DESIGNED TO BE USED WITH A HAND DRIVEN DEVICE. THE TOOL CAN BE ADAPTED TO A DRILL MOTOR IF USED AT A MAXIMUM SPEED OF APPROX. 300 RPM. HIGHER SPEEDS CAN CAUSE OVERHEATING AND AFFECT THE ACCURACY. AFTER APPROX. 1 HOUR OF TOOL USAGE CHECK TORQUE SETTINGS WITH A TORQUE WRENCH.

INTERMEDIATE HORIZONTAL VISION OVER SPANDREL



TOOL EXCESS SEALANT HEAD CONDITION SILL SAME



TOOL EXCESS SEALANT

CONFIDENTIAL AND PROPRIETARY INFORMATION
KAWNEER COMPANY INC.

THESE DRAWINGS ARE THE SOLE AND EXCLUSIVE PROPERTY OF KAWNEER AND CONTAIN SENSITIVE, PRIVILEGED OR CONFIDENTIAL INFORMATION WHICH MAY BE USED ONLY FOR ITS BENEFIT. THE DISCLOSURE OF THESE DRAWINGS TO UNAUTHORIZED PERSONS IS STRICTLY PROHIBITED. THIS DOCUMENT AND ALL COPIES MUST BE RETURNED UPON DEMAND.
© COPYRIGHT KAWNEER COMPANY, INC., 2014

STEP - 18 INSTALL EXTERIOR PRESSURE PLATES

INSTALL VERTICAL PRESSURE PLATES AT CAPTURED VERTICALS

VERTICAL EXPANSION JOINTS

TOP OF VERTICAL MULLION TO TOP OF PRESSURE PLATE IS 1-1/2"

AT TOP PRESSURE PLATE LOCATE SCREW CLOSE TO THE MULLION JOINT BUT NOT BELOW THE JOINT.

CLEAN JOINT PER SEALANT MANUFACTURER'S RECOMMENDATIONS

COMPLETELY SEAL JOINT. DO NOT LET SEALANT INTERFERE WITH COVER SNAP OVERLAP PRESSURE PLATE FACE CREATING A BAND-AID SEAL

KAWNEER

1620 SSG
INSTALLATION
INSTRUCTIONS

Product Engineering & Development

95525-005
02/21/14

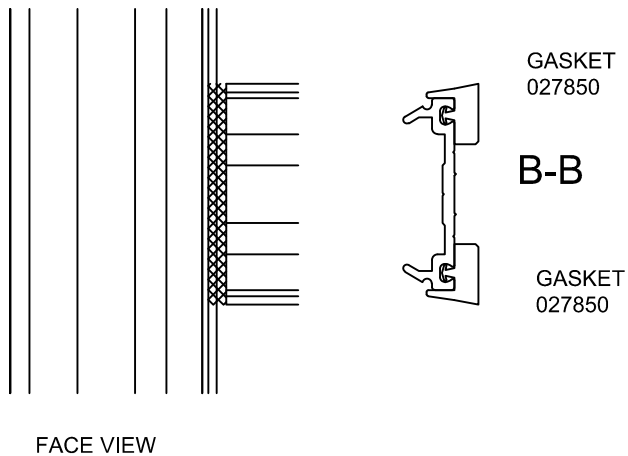
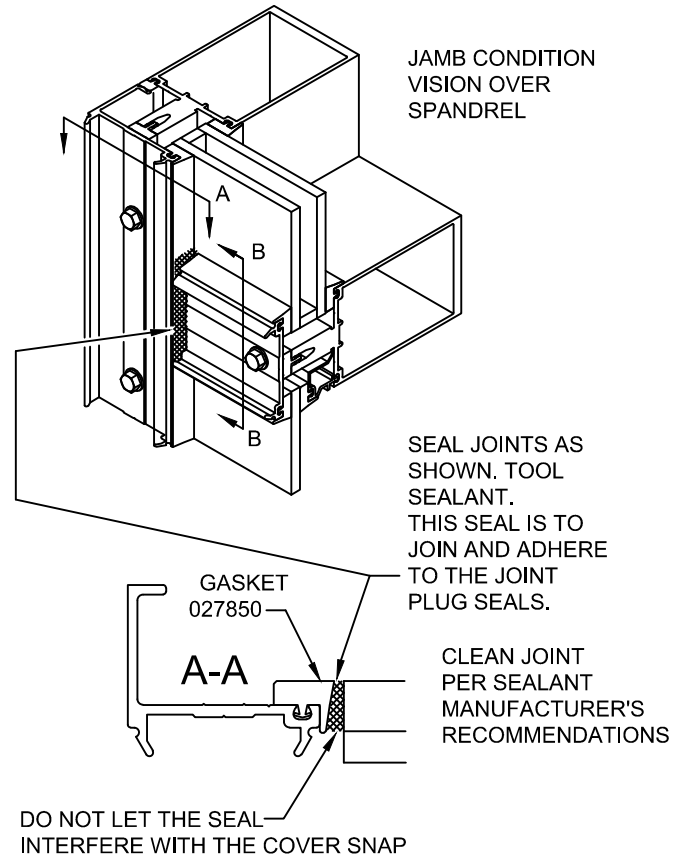
178971 SHEET 09 OF 12

STEP - 18 INSTALL EXTERIOR PRESSURE PLATES

INSTALL HORIZONTAL PRESSURE PLATES

AT JAMB

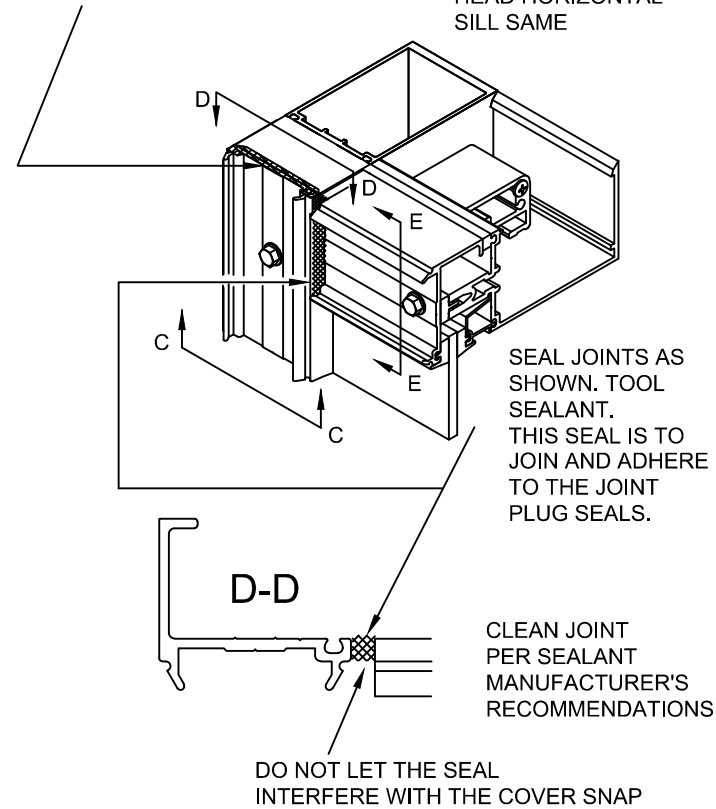
CENTER HORIZONTAL PRESSURE PLATES SO END GAPS ARE EQUAL.



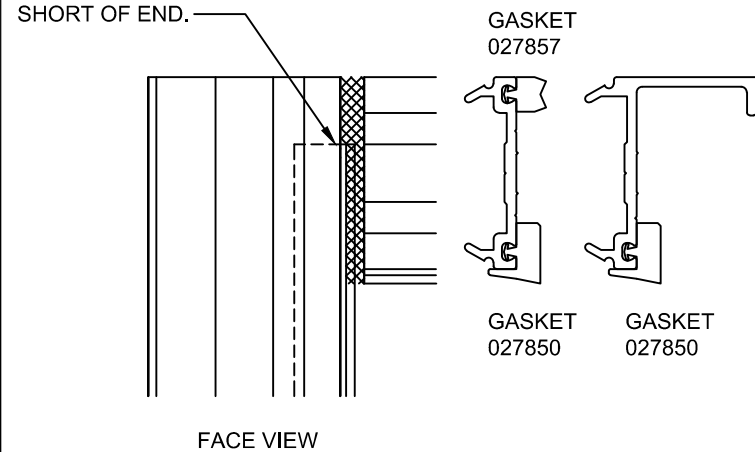
STEP - 18 INSTALL EXTERIOR PRESSURE PLATES

SEAL BETWEEN PRESSURE PLATE AND HEAD/SILL END CAP AS SHOWN.

HEAD HORIZONTAL SILL SAME



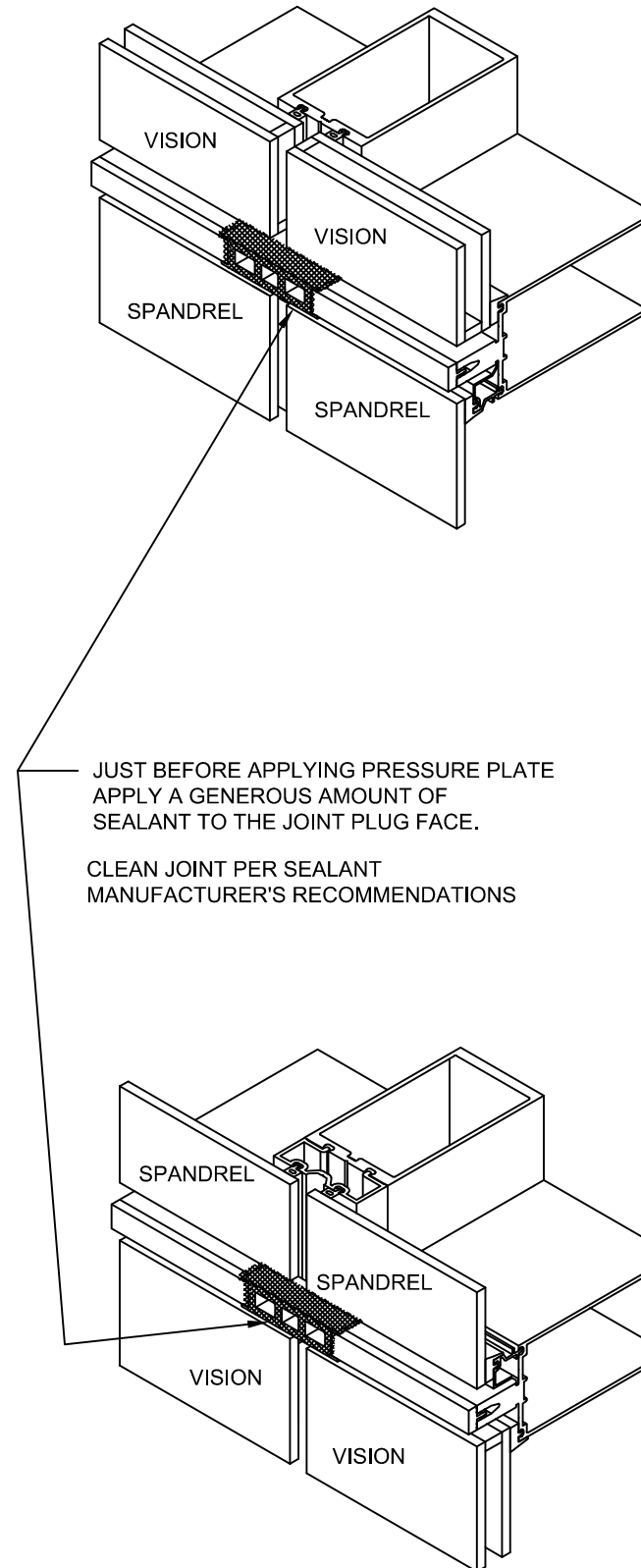
VERTICAL GASKET STOPS 11/16" SHORT OF END.



STEP - 18 INSTALL EXTERIOR PRESSURE PLATES

INSTALL HORIZONTAL PRESSURE PLATES

AT SSG VERTICALS



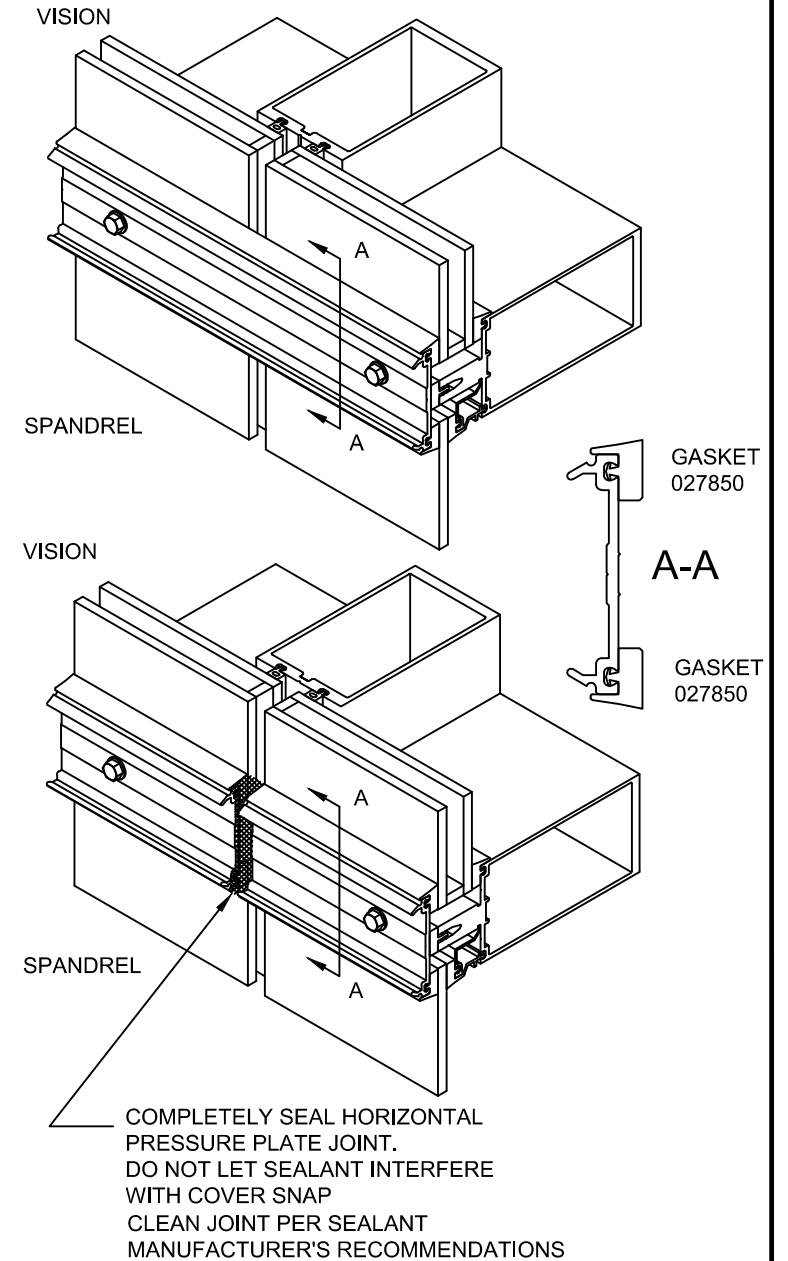
CONFIDENTIAL AND PROPRIETARY INFORMATION
KAWNEER COMPANY INC.

THESE DRAWINGS ARE THE SOLE AND EXCLUSIVE PROPERTY OF KAWNEER AND CONTAIN SENSITIVE, PRIVILEGED OR CONFIDENTIAL INFORMATION WHICH MAY BE USED ONLY FOR ITS BENEFIT. THE DISCLOSURE OF THESE DRAWINGS TO UNAUTHORIZED PERSONS IS STRICTLY PROHIBITED. THIS DOCUMENT AND ALL COPIES MUST BE RETURNED UPON DEMAND.
© COPYRIGHT KAWNEER COMPANY, INC., 2014

STEP - 18 INSTALL EXTERIOR PRESSURE PLATES

INSTALL HORIZONTAL PRESSURE PLATES

AT SSG VERTICALS



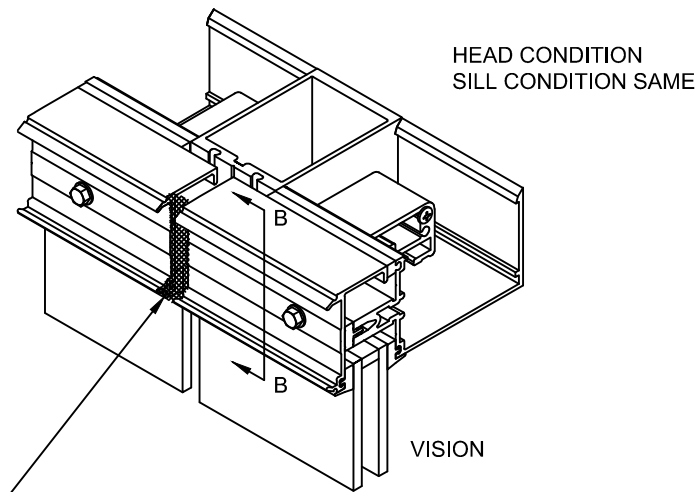
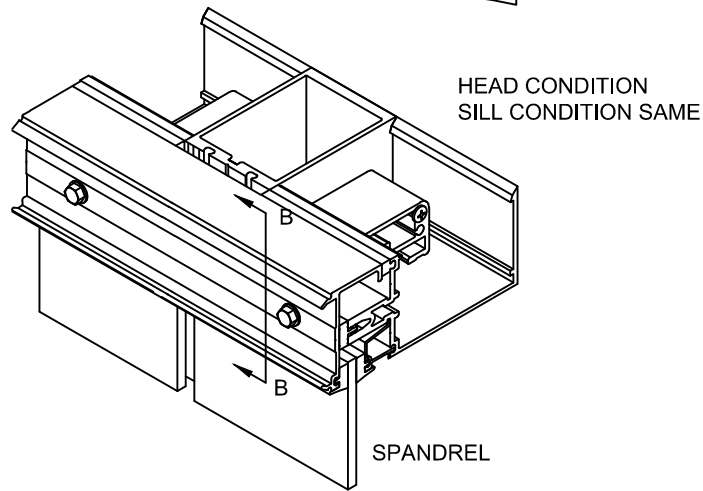
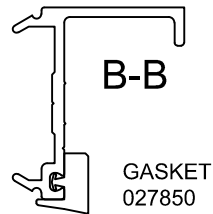
1620 SSG
INSTALLATION
INSTRUCTIONS

Product Engineering & Development

95525-005
02/21/14

STEP - 18 INSTALL EXTERIOR PRESSURE PLATES

INSTALL HORIZONTAL PRESSURE PLATES
AT SSG VERTICALS

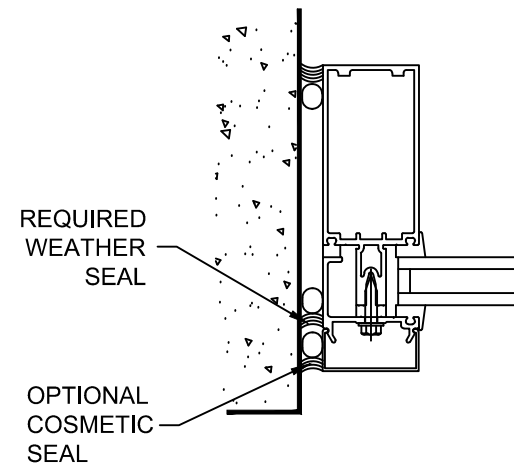
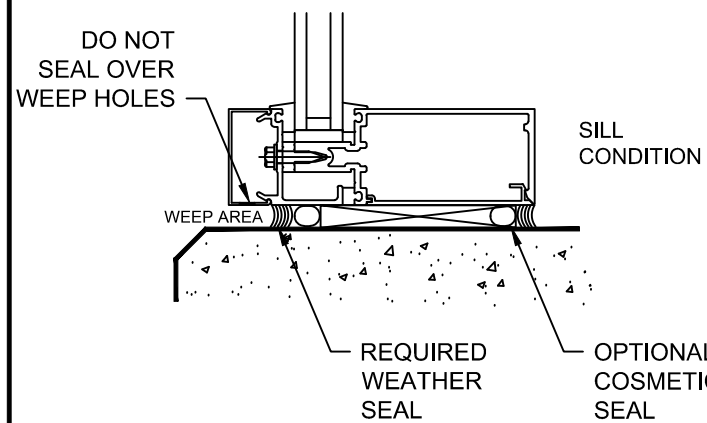
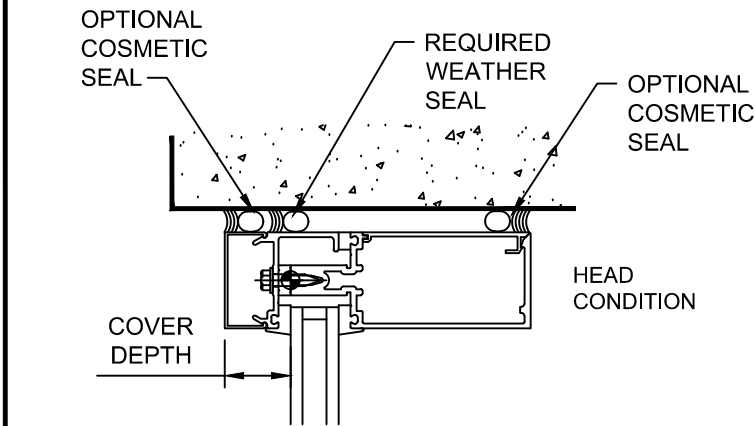


COMPLETELY SEAL HORIZONTAL PRESSURE PLATE JOINT. DO NOT LET SEALANT INTERFERE WITH COVER SNAP

CLEAN JOINT PER SEALANT MANUFACTURER'S RECOMMENDATIONS

STEP - 19 INSTALL PERIMETER SEALS

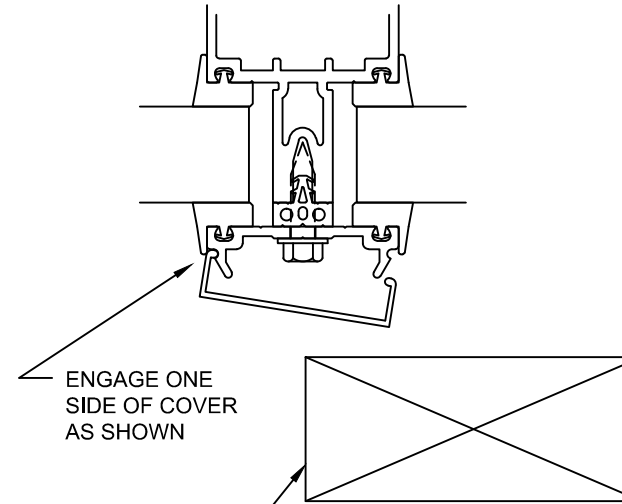
PERIMETER WEATHER SEALS ARE INSTALLED AT THE PRESSURE PLATE LOCATION AS DETAILED BELOW. (THIS SEAL SHOULD BE INSTALLED BEFORE COVERS ARE APPLIED WHEN COVERS DEEPER THAN 3/4" ARE USED) EXTERIOR COSMETIC SEALS AT THE COVER MAY BE APPLIED AT THE HEAD AND JAMBS ONLY. SILL COVERS MUST REMAIN OPEN TO ALLOW WATER DRAINAGE TO THE EXTERIOR.



STEP - 20 INSTALL EXTERIOR COVERS

CAPTURED VERTICALS AT JAMB

CARE MUST BE TAKEN TO AVOID DAMAGE TO COVERS DURING INSTALLATION. USE A 18" LONG PIECE OF 2 X 4 WOOD ALONG WITH A HAMMER OR Mallet TO SEAT THE COVER.



VERTICAL SPLICE JOINT

TOP OF PRESSURE PLATE TO TOP OF COVER IS 4-1/2"

SPLICE SLEEVE IS FACTORY APPLIED TO BOTTOM COVER

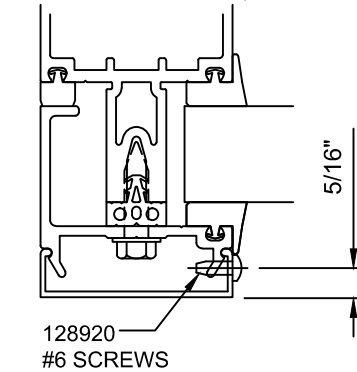
CONFIDENTIAL AND PROPRIETARY INFORMATION
KAWNEER COMPANY INC.

THESE DRAWINGS ARE THE SOLE AND EXCLUSIVE PROPERTY OF KAWNEER AND CONTAIN SENSITIVE, PRIVILEGED OR CONFIDENTIAL INFORMATION WHICH MAY BE USED ONLY FOR ITS BENEFIT. THE DISCLOSURE OF THESE DRAWINGS TO UNAUTHORIZED PERSONS IS STRICTLY PROHIBITED. THIS DOCUMENT AND ALL COPIES MUST BE RETURNED UPON DEMAND.
© COPYRIGHT KAWNEER COMPANY, INC., 2014

STEP - 20 INSTALL EXTERIOR COVERS

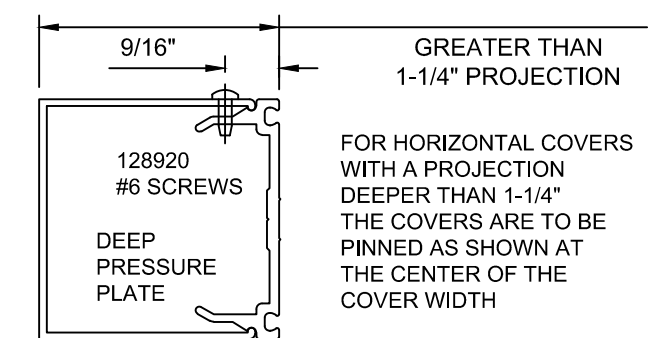
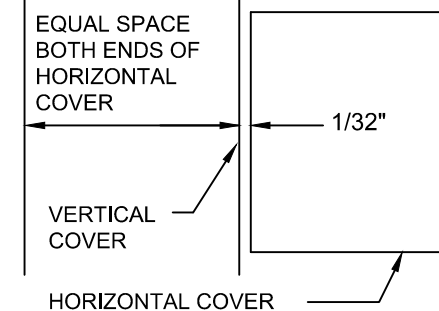
PINNING OF ALL VERTICAL COVERS IS REQUIRED FOR BOTH SIDES. DRILL A .106 DIA. HOLE (#36 DRILL) AND INSTALL 128920 SCREWS #6 X 3/8" PAN HEAD TYPE B. LOCATE PINNING AT A HORIZONTAL CLOSEST TO THE COVER HEIGHT CENTER.

(ONE SIDE ONLY AT JAMBS)



NOTE FOR 5" SIGHTLINE COVERS
DUE TO LARGE EXTRUSION TOLERANCES, 5" SIGHTLINE COVERS MAY REQUIRE SEALANT OR PINNING TO HOLD IN PLACE.

INSTALL HORIZONTAL COVERS WITH THE WEEP HOLES DOWN



KAWNEER

1620 SSG
INSTALLATION
INSTRUCTIONS

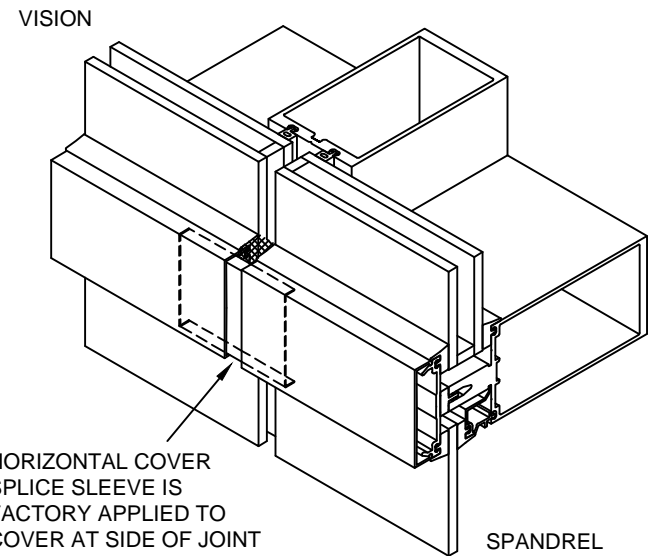
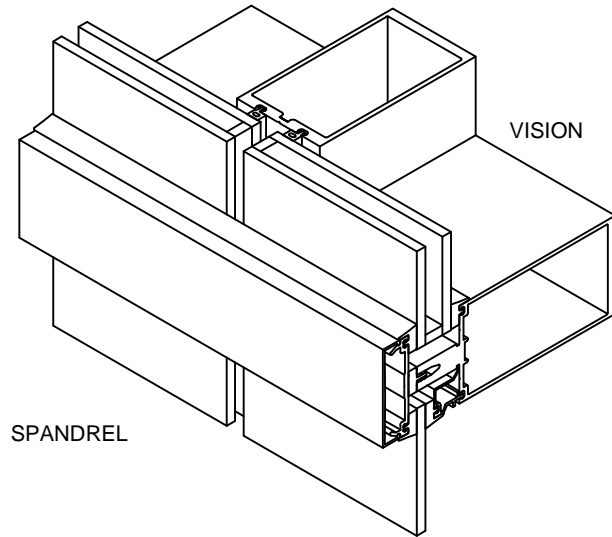
Product Engineering & Development

95525-005
02/21/14

STEP - 20 INSTALL EXTERIOR COVERS

STRUCTURAL GLAZED VERTICALS

INSTALL HORIZONTAL COVERS WITH THE WEEP HOLES DOWN

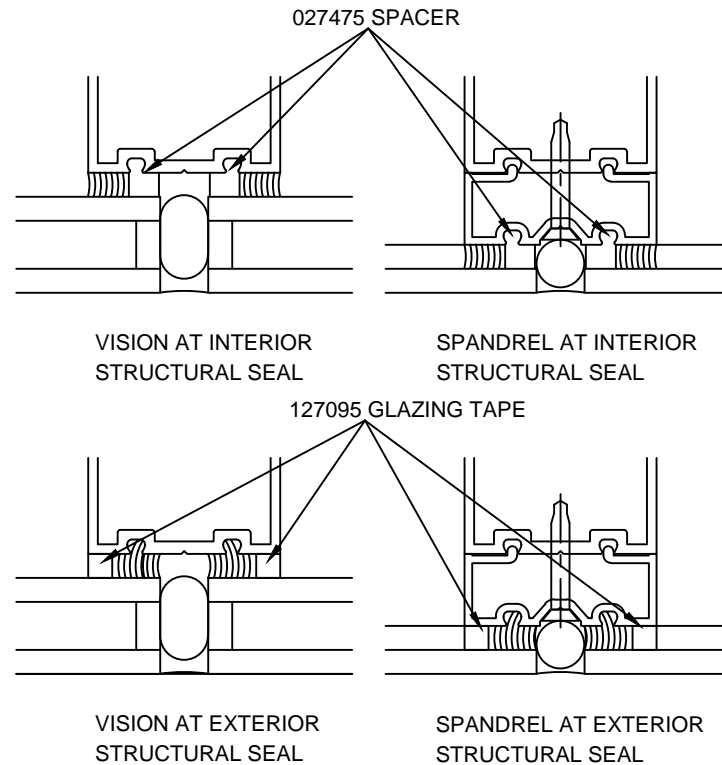


STEP - 21 INSTALL STRUCTURAL AND WEATHER SEALS

KAWNEER DOES NOT SUPPLY SEALANT. SEALANT TO BE SILICONE AS RECOMMENDED BY THE SEALANT MANUFACTURER. INFILL AND METAL TO BE CLEANED PER THE SEALANT MANUFACTURER'S RECOMMENDATIONS. SEALANT BACKUP ROD TO BE PER THE SEALANT MANUFACTURER'S RECOMMENDATIONS.

FILL SPACE BETWEEN INSULATED UNITS AND BEHIND SINGLE GLAZED UNITS WITH RECOMMENDED BACKUP ROD. APPLY STRUCTURAL SEAL AND WEATHER SEAL AS SHOWN.

ALLOW STRUCTURAL SEAL TO CURE PER SEALANT MANUFACTURER'S RECOMMENDATIONS. THEN REMOVE TEMPORARY RETAINERS, SEAL FASTENER HOLES AND FILL WEATHER SEAL HOLES.



EXTERIOR STRUCTURAL SEAL MUST BE APPLIED IN THREE STEPS. EACH SIDE SEPARATELY THEN THE WEATHER SEAL

REMOVING COVERS

COVERS CAN BE SAVED IF TOLERANCES ARE NOT TOO TIGHT AND THE COVER IS REMOVED WITH EXTREME CARE

PRY BAR WITH SHARP POINT AND FLAT THIS SIDE

PUSH BACK THE GASKET TRIM LIP START AT ONE END TO DISENGAGE DO THIS IN PROGRESSION FOR THE COMPLETE LENGTH

