

GENERAL NOTES

THESE INSTALLATION INSTRUCTIONS ARE A SUPPLEMENT TO THE APPROVED SHOP DRAWINGS. USE IN CONJUNCTION WITH THOSE DRAWINGS.

1 - HANDLING, STORING AND PROTECTING ALUMINUM MATERIAL.

THE FOLLOWING PRECAUTIONS ARE RECOMMENDED TO ASSURE EARLY ACCEPTANCE OF YOUR PRODUCTS AND WORKMANSHIP.

A - HANDLE CAREFULLY - DO NOT DROP FROM THE TRUCK. STACK WITH ADEQUATE SEPARATION SO MATERIAL WILL NOT RUB TOGETHER. STORE OFF THE GROUND. PROTECT AGAINST ELEMENTS AND OTHER CONSTRUCTION TRADES.

B - KEEP MATERIAL AWAY FROM WATER, MUD AND SPRAY - PREVENT CEMENT, PLASTER AND OTHER MATERIALS FROM DAMAGING THE FINISH.

C - PROTECT THE MATERIALS AFTER ERECTION, BY WRAPPING WITH KRAFT PAPER - OR BY ERECTING VISQUEEN/CANVAS SPLATTER SCREENS. CEMENT, PLASTER, TERRAZZO AND OTHER ALKALINE MATERIALS ARE VERY HARMFUL TO THE FINISH AND SHOULD BE REMOVED WITH WATER AND MILD SOAP BEFORE SETTING OCCURS. UNDER NO CIRCUMSTANCES ALLOW THESE MATERIALS TO DRY OR PERMANENT STAINING WILL OCCUR.

2 - GENERAL RULES

THE FOLLOWING PRACTICES ARE RECOMMENDED FOR ALL WALL INSTALLATIONS.

A - READ COMPLETE INSTRUCTIONS BEFORE ORDERING GLASS OR FABRICATING MATERIAL.

B - CHECK SHOP DRAWINGS TO BECOME THOROUGHLY FAMILIAR WITH THE JOB.

C - ALL MATERIALS ARE TO BE INSTALLED PLUMB, LEVEL AND TRUE.

D - ALL WORK SHOULD START FROM ESTABLISHED BENCH MARKS AND COLUMN CENTER LINES ESTABLISHED BY THE ARCHITECTURAL DRAWINGS AND THE GENERAL CONTRACTOR.

E - THE SEQUENCE OF ERECTION SHOULD BE COORDINATED WITH THE JOB SUPERINTENDENT SO DELAYS ARE PREVENTED AND RISK OF MATERIAL DAMAGE IS MINIMIZED. IF PRESETTING OF ANCHORAGE IS REQUIRED, COORDINATE WITH GENERAL CONTRACTOR AND SUPERVISE LOCATION.

F - MAKE CERTAIN CONSTRUCTION WHICH WILL RECEIVE YOUR MATERIALS IS ACCORDING TO THE CONTRACT DOCUMENTS. IF NOT, NOTIFY THE GENERAL CONTRACTOR IN WRITING AND RESOLVE DIFFERENCES BEFORE PROCEEDING WITH YOUR WORK.

G - INSULATE ALL ALUMINUM TO BE PLACED DIRECTLY IN CONTACT WITH THE MASONRY OR INCOMPATIBLE MATERIALS WITH A HEAVY COAT OF ZINC CHROMATE OR BITUMINOUS PAINT.

H - FOLLOW KAWNEER INSTALLATION AND GLAZING INSTRUCTIONS.

J - CHECK ALL MATERIAL ON ARRIVAL FOR QUANTITY.

K - BE SURE TO HAVE ALL THE MATERIALS AND TOOLS NEEDED TO BEGIN THE INSTALLATION.

- 1 - APPROVED SHOP DRAWINGS
- 2 - LEVEL AND PLUMB (TRANSIT)
- 3 - FASTENERS AND REQUIRED DRIVERS.
- 4 - PERIMETERS AND ACCESSORIES SUCH AS ANCHORS, FASTENERS, SLEEVES AND/OR SPLICE CAPS.
- 5 - SEALING MATERIALS.
- 6 - GLAZING MATERIALS.

L - FOLLOW SEALANT MANUFACTURER'S RECOMMENDATIONS FOR PROPER SEALANT AND APPLICATION. ALL SEALANTS AND MASTICS MUST BE COMPATIBLE WITH ALL SURFACES INCLUDING OTHER SEALANT SURFACES. WHERE REQUIRED ALL SEALANTS MUST ADHERE TO ALL SURFACES INCLUDING OTHER SEALANT SURFACES.

1620 SYSTEM NOTES

1620 SYSTEM IS AVAILABLE WITH 1" FRAMING MEMBERS WHICH ACCEPT BOTH 1" AND 1/4" INFILLS.

GLASS BITE IS 7/16" AT VERTICALS AND HORIZONTALS. GLASS SIZES MUST BE CALCULATED FROM APPROVED SHOP DRAWINGS.

UNLESS OTHERWISE SPECIFIED, IT IS RECOMMENDED THAT SILICONE SEALANT BE USED FOR ALL INTERNAL SEALS.

SEALANT MUST BE APPLIED PER THE SEALANT MANUFACTURER'S RECOMMENDATIONS AND PASS ALL ADHESION AND COMPATIBILITY TESTING. AT ALL JOINT SEALS, SEALANT MUST ADHERE TO METAL, GASKETS, THERMAL SEPARATOR AND JOINT PLUG MATERIALS. CLEAN ALL SURFACES PRIOR TO APPLICATION OF SEALANT AND PRIME WHERE NECESSARY TO ACHIEVE PROPER ADHESION.

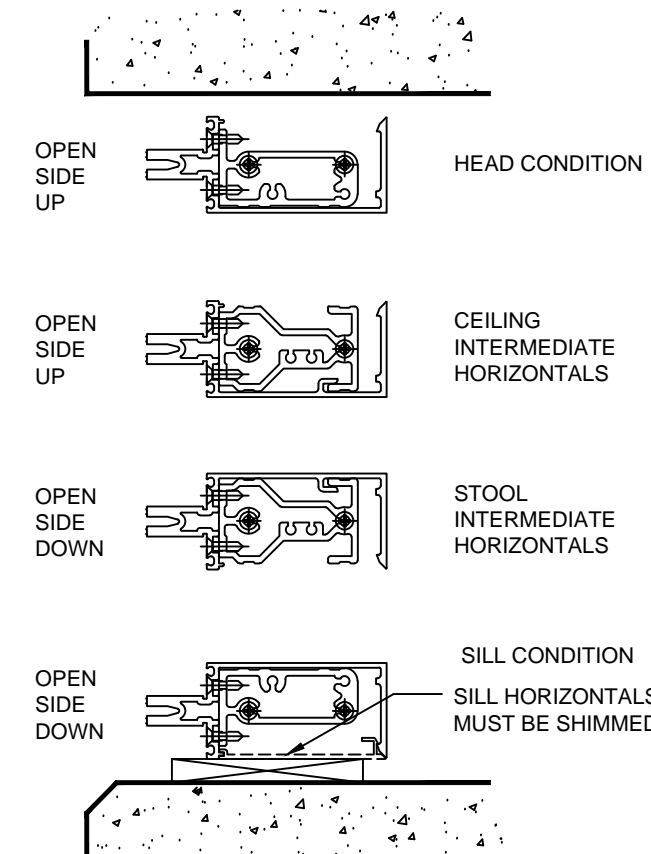
SHIM ALL SILL HORIZONTALS AT SETTING BLOCK LOCATIONS.

OPEN BACK HORIZONTAL NOTES

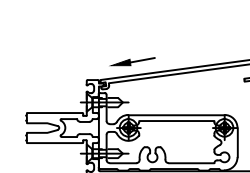
THE OPEN BACK HORIZONTAL IS TO BE TYPICALLY USED FOR ALL HEAD/SILL AND LAST BAY INTERMEDIATE HORIZONTALS.

THE OPEN BACK HORIZONTAL CAN BE USED AT OTHER CONDITIONS IF IT IS AN ADVANTAGE TO THE JOB DESIGN.

THE SHEAR BLOCK AT ALL OPEN BACK INTERMEDIATE HORIZONTALS HAS THE OPTION TO BE PRE-INSTALLED INTO THE HORIZONTAL BEFORE HORIZONTALS ARE INSTALLED



WHEN THE OPEN SIDE OF THE OPEN BACK HORIZONTAL IS EXPOSED AND AT EYE LEVEL A SNAP-IN FILLER IS AVAILABLE.



WHEN THE SNAP-IN FILLER IS NOT USED, AND DUE TO STANDARD COMMERCIAL EXTRUDING TOLERANCES, IT MAY BE REQUIRED TO USE A 4" PIECE OF THE FILLER AT EACH END OF A HORIZONTAL.

USE PART 162316 FOR THE 6" DEEP SYSTEM
USE PART 162317 FOR THE 7 1/2" DEEP SYSTEM

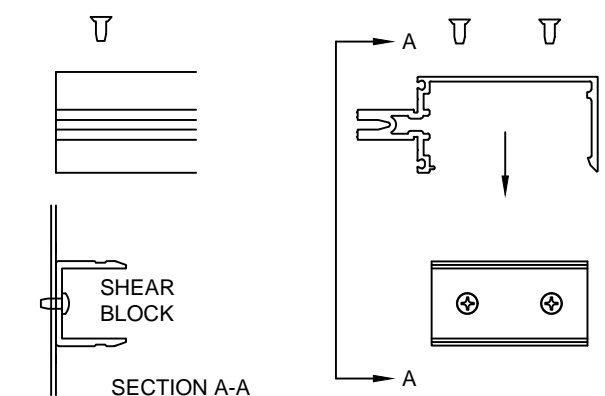
CONFIDENTIAL AND PROPRIETARY INFORMATION
KAWNEER COMPANY INC.

THESE DRAWINGS ARE THE SOLE AND EXCLUSIVE PROPERTY OF KAWNEER AND CONTAIN SENSITIVE, PRIVILEGED OR CONFIDENTIAL INFORMATION WHICH MAY BE USED ONLY FOR ITS BENEFIT. THE DISCLOSURE OF THESE DRAWINGS TO UNAUTHORIZED PERSONS IS STRICTLY PROHIBITED. THIS DOCUMENT AND ALL COPIES MUST BE RETURNED UPON DEMAND.
© COPYRIGHT KAWNEER COMPANY, INC., 2014

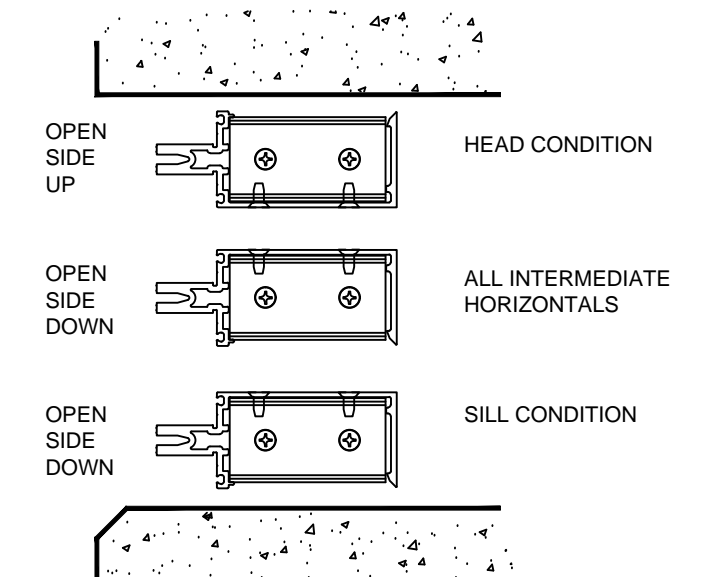
OPEN BACK HORIZONTALS AT 90° AND 135° CORNERS

WHENEVER POSSIBLE AVOID USING OPEN BACK HORIZONTALS AT 90° AND 135° CORNERS. IF USING THE OPEN BACK HORIZONTAL BECOMES ABSOLUTELY NECESSARY THE SHEAR BLOCK CONNECTION WILL BE AS SHOWN BELOW.

ALSO REFER TO CORNER INSTRUCTIONS 162972



THE OPEN SIDE OF THE OPEN BACK HORIZONTAL IS TO BE POSITIONED AS SHOWN BELOW. THE INTERMEDIATE HORIZONTAL IS POSITIONED OPEN SIDE DOWN FOR DEAD LOAD SUPPORT.



KAWNEER

1620
INSTALLATION
INSTRUCTIONS

Product Engineering & Development

95525-005
02/21/14

178970 SHEET 01 OF 09

STEP - 1 CHECK OPENINGS

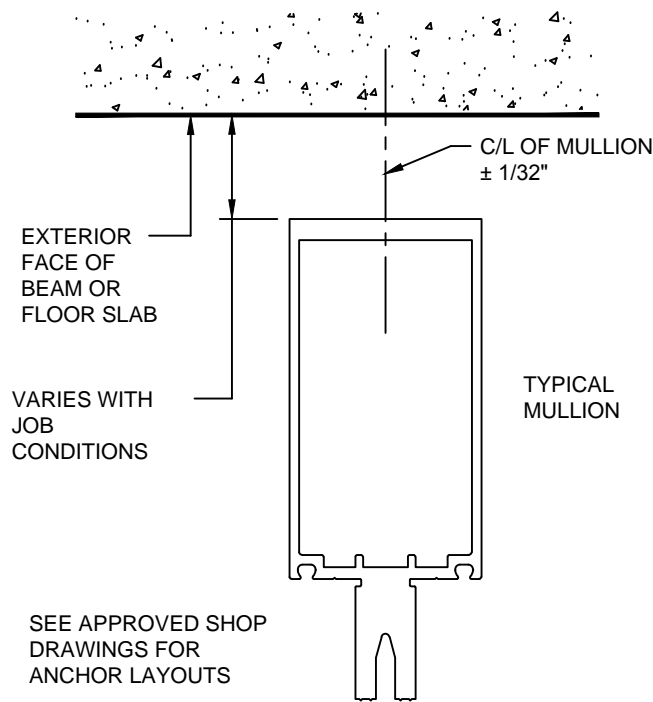
ELEVATIONS AND SLABS MUST BE WITHIN ADJUSTMENT OF ANCHORING SYSTEM. SEE APPROVED SHOP DRAWINGS FOR ALLOWABLE ADJUSTMENT.

ANCHORING SURFACES OF PERIMETER CONSTRUCTION MUST BE LEVEL AND PLUMB WITHIN THE ADJUSTMENT LIMITS OF THE HEAD, SILL AND JAMB. SEE APPROVED SHOP DRAWINGS FOR ALLOWABLE ADJUSTMENT.

STEP - 2 LAY OUT ANCHOR AND MULLION CENTERLINES

USE WALL LINES ESTABLISHED BY THE GENERAL CONTRACTOR. ON EACH FLOOR LAY OUT A REFERENCE LINE TO ESTABLISH IN AND OUT WALL LOCATIONS.

USE COLUMN CENTER LINES ESTABLISHED BY THE GENERAL CONTRACTOR. ON EACH FLOOR LAY OUT MULLION CENTER LINES AND ANCHOR CENTER LINES.



STEP - 3 INSTALL PRESET ANCHORS IF APPLICABLE

USING LOCATION LINES PREVIOUSLY ESTABLISHED INSTALL PRESET ANCHORS IN PLACE PER APPROVED SHOP DRAWINGS.

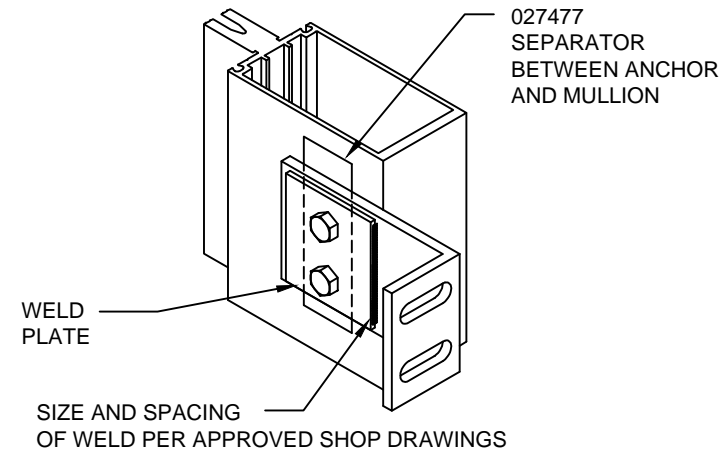
STEP - 4 FRAME ASSEMBLY

ATTACH ANCHORS TO MULLIONS WHERE APPLICABLE.

ANCHOR PREP MAY BE FABRICATED IN THE FIELD OR FACTORY. CONSULT APPROVED SHOP DRAWINGS FOR CORRECT METHOD.

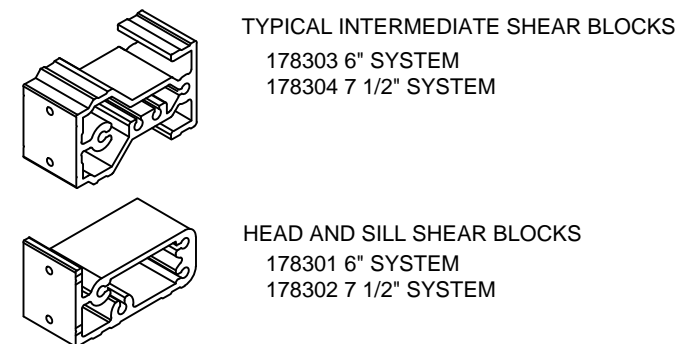
STANDARD ANCHOR PREP IS THRU-BOLTED AT INTERMEDIATE VERTICALS AND TAPPING PLATES ARE USED AT JAMB VERTICALS. REFER TO APPROVED SHOP DRAWINGS FOR CORRECT METHOD.

WHEN WELDING ANCHORS, PROTECT INSTALLED GLASS AND METAL FROM WELD SPLATTER.



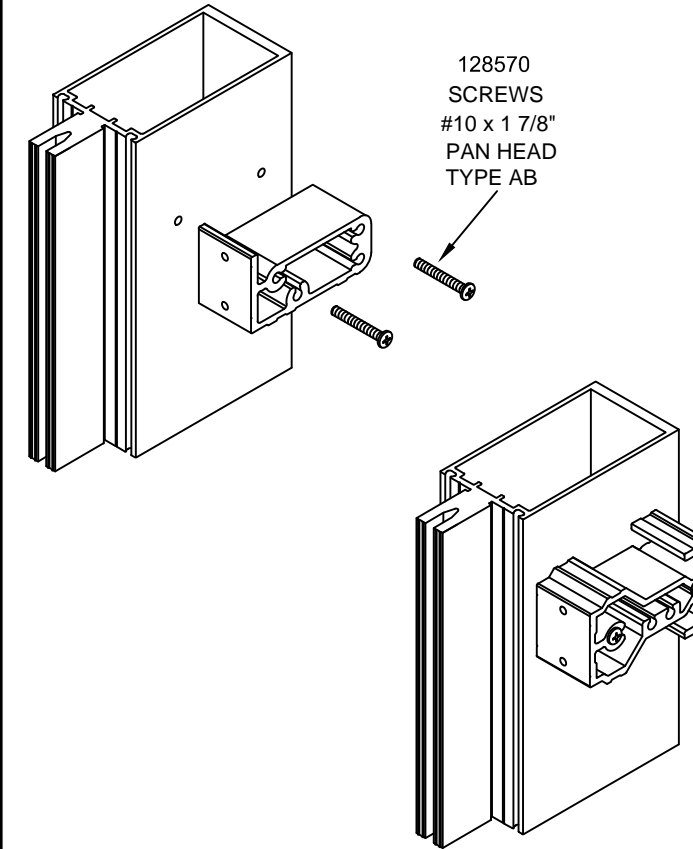
DO NOT OVER TIGHTEN ANCHOR CONNECTIONS. TIGHTEN TO A "SNUG TIGHT" POSITION WITH PARTS BROUGHT INTO GOOD CONTACT. BE SURE ANY SPRING TYPE LOCK WASHERS ARE COMPRESSED. THEN TIGHTEN APPROXIMATELY 1/2 MORE TURN.

ATTACH SHEAR BLOCKS.



STEP - 4 FRAME ASSEMBLY

ATTACH SHEAR BLOCKS.

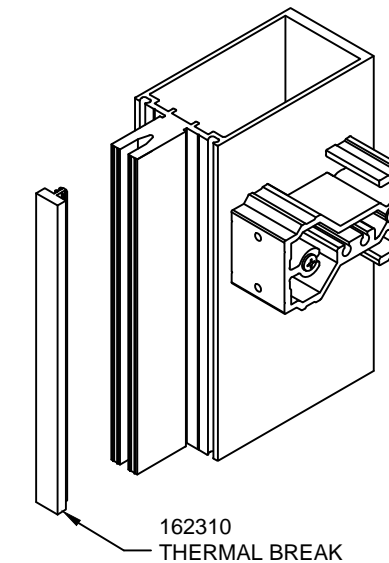


STEP - 5 INSTALL 162310 THERMAL BREAK



DO NOT STRETCH WHEN REMOVING FROM COIL AND CARTON

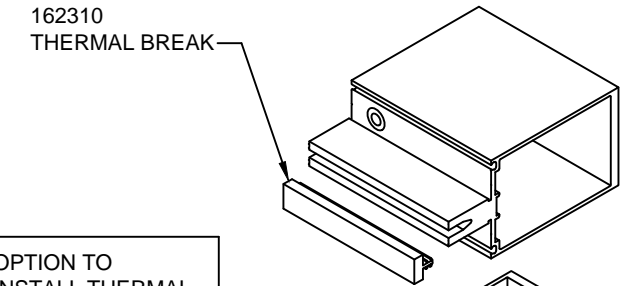
DO NOT STRETCH DURING INSTALLATION



CONFIDENTIAL AND PROPRIETARY INFORMATION
KAWNEER COMPANY INC.

THESE DRAWINGS ARE THE SOLE AND EXCLUSIVE PROPERTY OF KAWNEER AND CONTAIN SENSITIVE, PRIVILEGED OR CONFIDENTIAL INFORMATION WHICH MAY BE USED ONLY FOR ITS BENEFIT. THE DISCLOSURE OF THESE DRAWINGS TO UNAUTHORIZED PERSONS IS STRICTLY PROHIBITED. THIS DOCUMENT AND ALL COPIES MUST BE RETURNED UPON DEMAND.
© COPYRIGHT KAWNEER COMPANY, INC., 2014

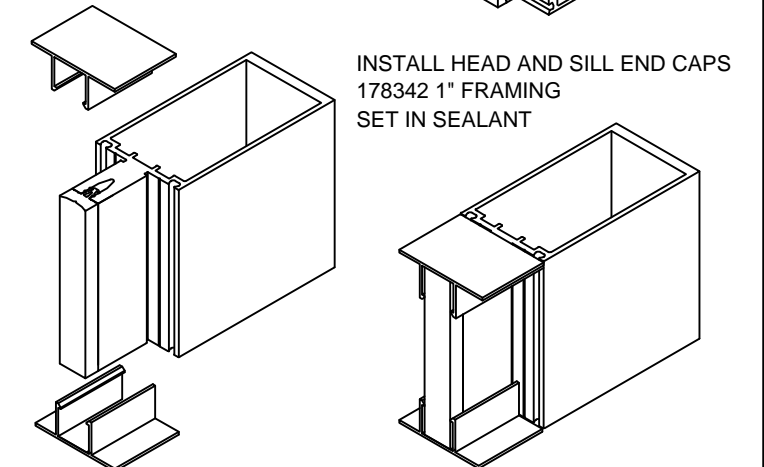
STEP - 5 INSTALL 162310 THERMAL BREAK



OPTION TO INSTALL THERMAL BREAK AFTER VERTICALS AND HORIZONTALS ARE INSTALLED

THERMAL BREAK TO BE SAME LENGTH AS VERTICAL MULLIONS

THERMAL BREAK TO BE 1/4" SHORT AT EACH END OF HORIZONTALS

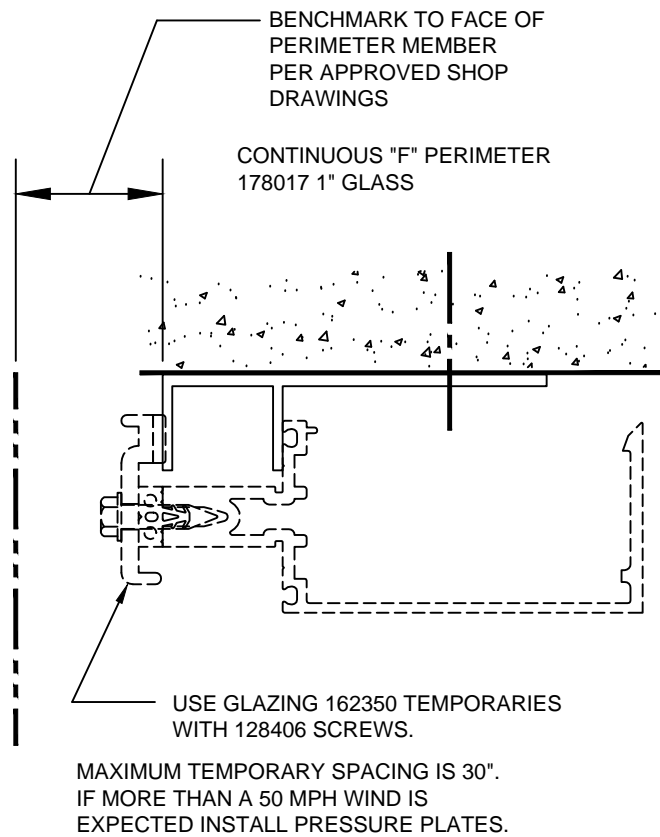


1620
INSTALLATION
INSTRUCTIONS

Product Engineering & Development

STEP - 6 PERIMETERS WHERE APPLICABLE

INSTALL PERIMETER MEMBERS PER APPROVED SHOP DRAWINGS. PERIMETER MEMBERS CAN OCCUR AT HEAD, SILL OR JAMB CONDITIONS.



STEP - 7 INSTALL VERTICAL MULLIONS

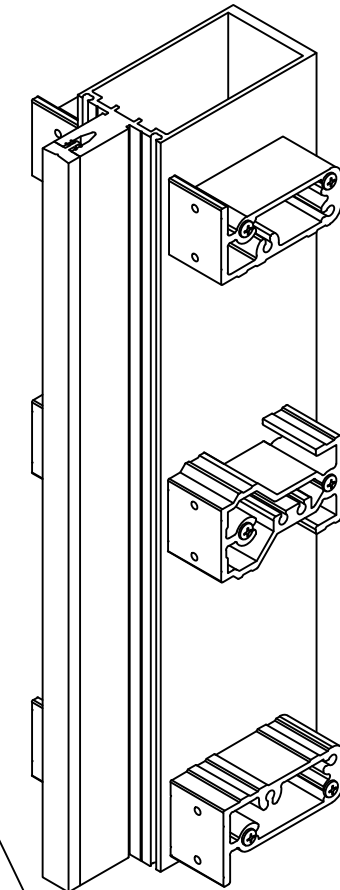
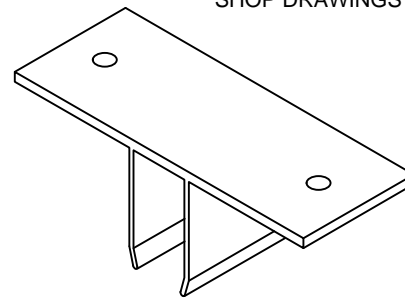
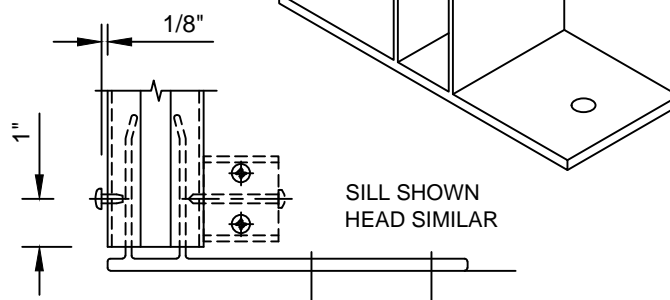
"F" OR "T" ANCHORS WHERE APPLICABLE

"F" AND "T" ANCHOR FASTENER LOCATIONS PER APPROVED SHOP DRAWINGS

AT HEAD/SILL SHEAR BLOCKS MAY NEED TO BE REMOVED TO INSTALL AN ANCHOR FASTENER THAT MIGHT BE LOCATED CLOSE TO THE MULLION

"F" AND "T" ANCHOR FASTENER LOCATIONS PER APPROVED SHOP DRAWINGS

AT MULLION JAMB SIDE, APPLY (2) 128407 SCREWS AS SHOWN TO CENTER F-CLIPS AS REQUIRED.



STEP - 7 INSTALL VERTICAL MULLIONS

VERTICAL SPLICE JOINTS WHERE APPLICABLE.

SLEEVE IS FACTORY TAPPED INTO THE BOTTOM OF THE TOP VERTICAL.

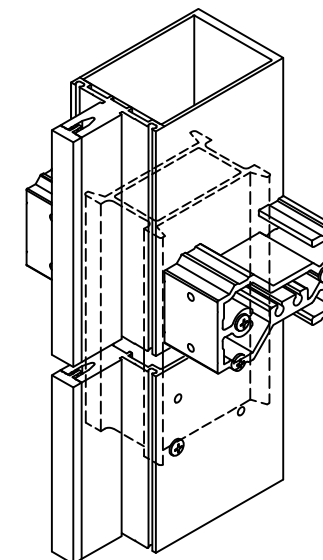
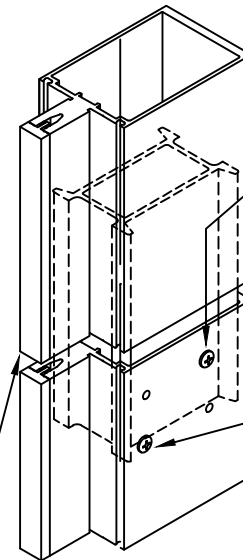
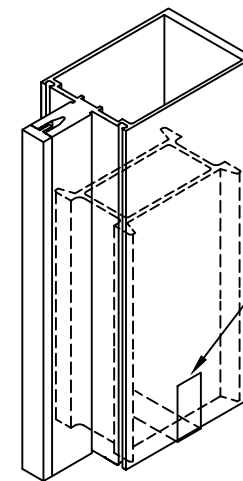
REMOVE THE TAPE AND LET THE SLEEVE SLIDE DOWN TO THE FACTORY APPLIED STOP SCREW

FIELD APPLIED FIXING SCREW 128348 #10 x 1 1/4" FLAT HEAD SELF DRILLING.

SHOP APPLIED STOP SCREW 028651 #10 x 3/4" PAN HEAD TYPE AB

USE TEMPORARY SPACERS FOR JOINT DIMENSION

SPLICE JOINT WHEN IT OCCURS AT A HORIZONTAL.

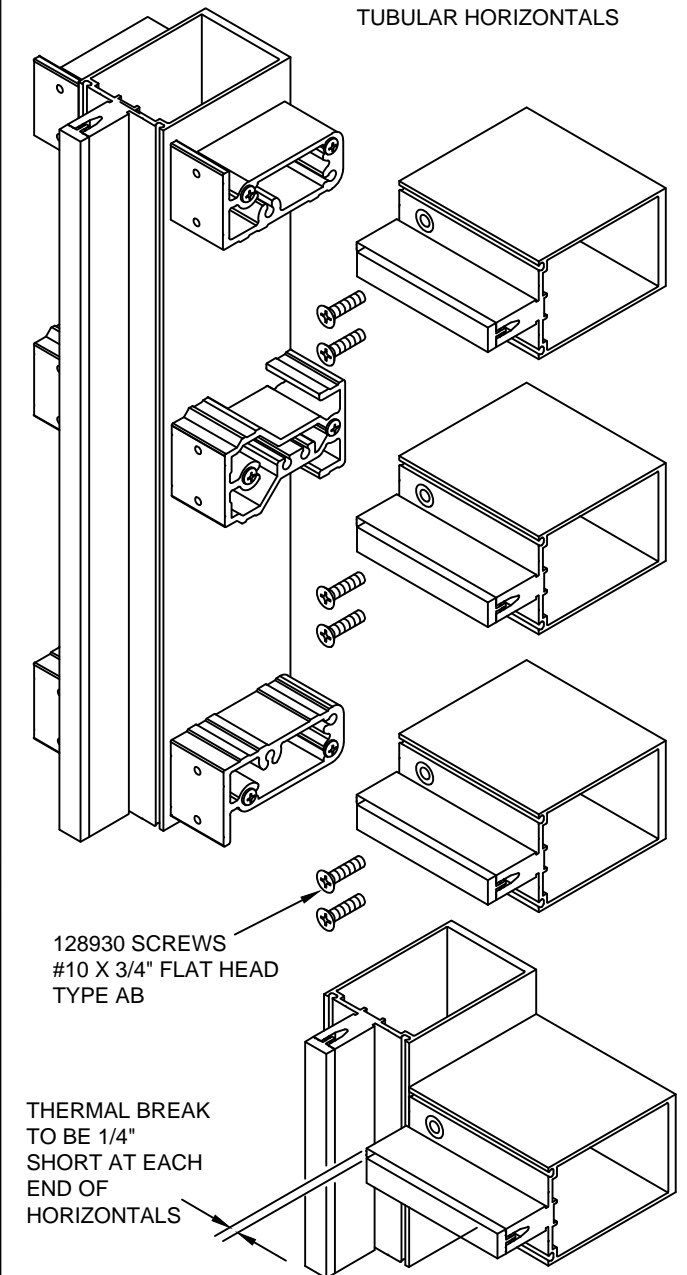


CONFIDENTIAL AND PROPRIETARY INFORMATION
KAWNEER COMPANY INC.

THESE DRAWINGS ARE THE SOLE AND EXCLUSIVE PROPERTY OF KAWNEER AND CONTAIN SENSITIVE, PRIVILEGED OR CONFIDENTIAL INFORMATION WHICH MAY BE USED ONLY FOR ITS BENEFIT. THE DISCLOSURE OF THESE DRAWINGS TO UNAUTHORIZED PERSONS IS STRICTLY PROHIBITED. THIS DOCUMENT AND ALL COPIES MUST BE RETURNED UPON DEMAND.
© COPYRIGHT KAWNEER COMPANY, INC., 2014

STEP - 8 INSTALL HEAD/SILL AND INTERMEDIATE HORIZONTALS

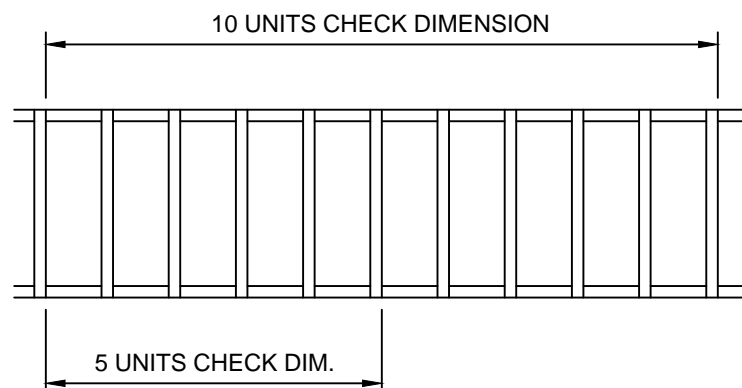
TUBULAR HORIZONTALS



STEP - 7 INSTALL VERTICAL MULLIONS

DIMENSION BUILD-UP CHECK

CHECK OVERALL FRAME DIMENSIONS ABOUT EVERY FIVE MULLIONS ON LONG RUNS. THIS IS TO AVOID DIMENSION BUILD-UP.



1620
INSTALLATION
INSTRUCTIONS

Product Engineering & Development

95525-005
02/21/14

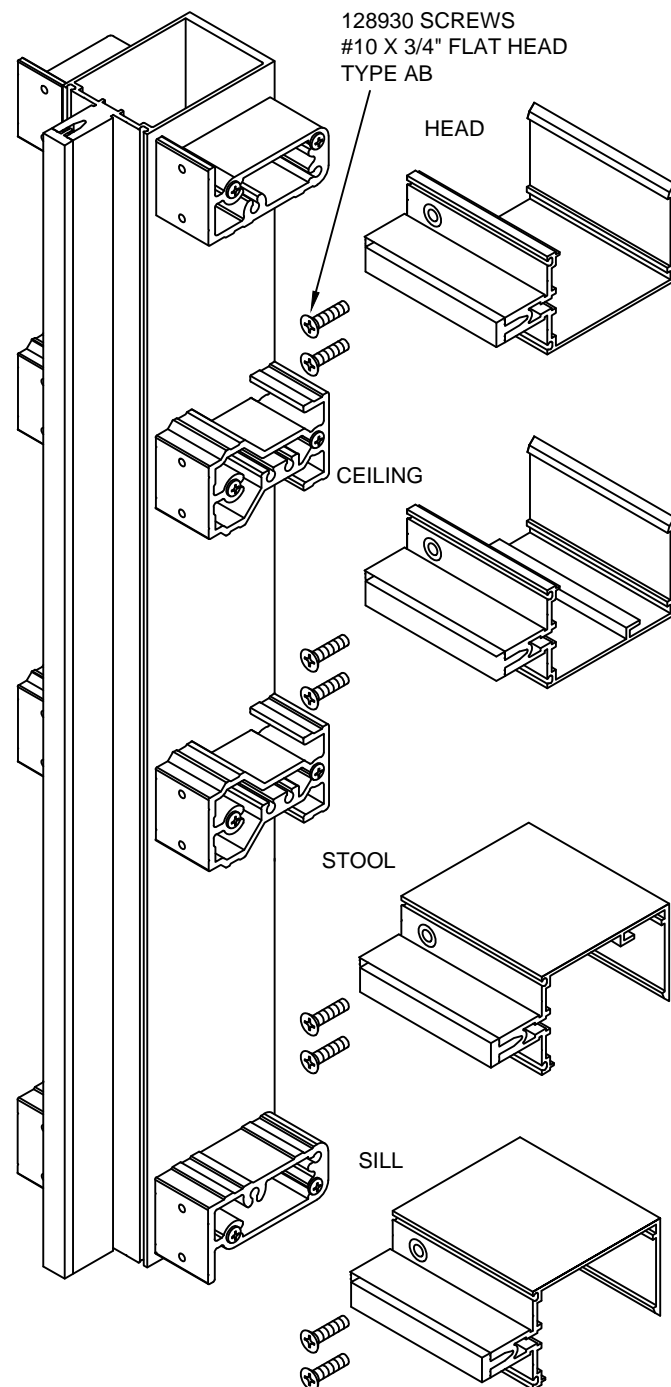
178970 SHEET 03 OF 09

CONFIDENTIAL AND PROPRIETARY INFORMATION
KAWNEER COMPANY INC.

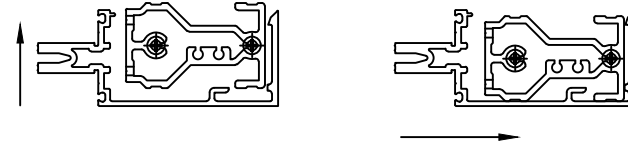
THESE DRAWINGS ARE THE SOLE AND EXCLUSIVE PROPERTY OF KAWNEER AND CONTAIN SENSITIVE, PRIVILEGED OR CONFIDENTIAL INFORMATION WHICH MAY BE USED ONLY FOR ITS BENEFIT. THE DISCLOSURE OF THESE DRAWINGS TO UNAUTHORIZED PERSONS IS STRICTLY PROHIBITED. THIS DOCUMENT AND ALL COPIES MUST BE RETURNED UPON DEMAND.
© COPYRIGHT KAWNEER COMPANY, INC., 2014

STEP - 8 INSTALL HEAD/SILL AND INTERMEDIATE HORIZONTALS

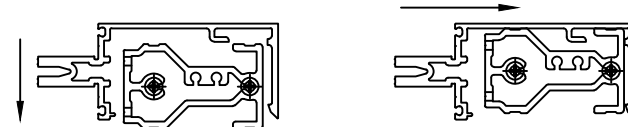
OPEN BACK HORIZONTALS AND LAST BAY HORIZONTALS.
FILLER AVAILABLE WHEN OPEN BACK IS EXPOSED AND AT EYE LEVEL.



INSTALLING CEILING INTERMEDIATE OPEN BACK HORIZONTAL

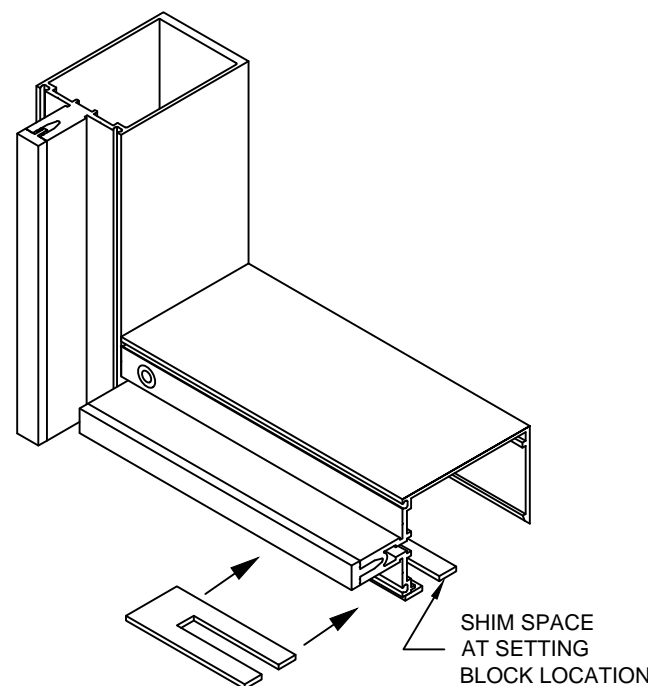


INSTALLING STOOL INTERMEDIATE OPEN BACK HORIZONTAL



STEP - 9 SHIM HORIZONTALS

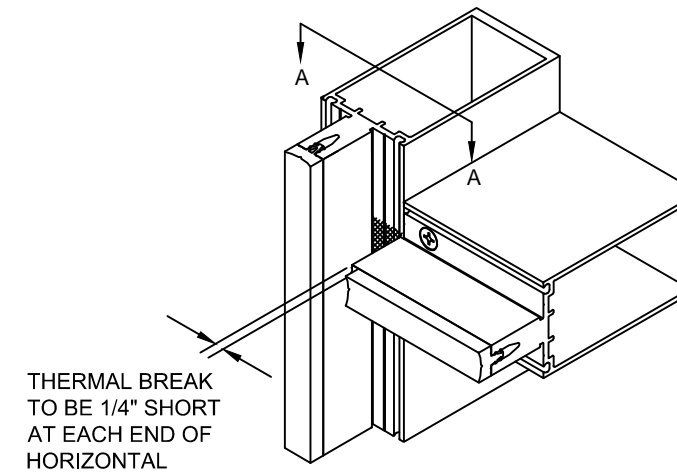
SHIM ALL SILL HORIZONTALS AT SETTING BLOCK LOCATIONS PER APPROVED SHOP DRAWINGS. LOCATE SHIMS TO ALLOW FOR SUFFICIENT SUPPORT TO THE SILL HORIZONTAL.



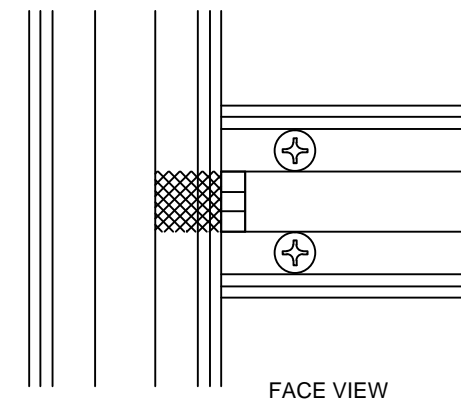
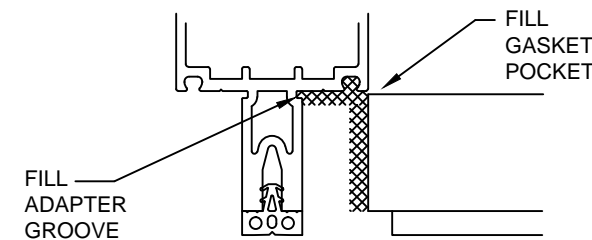
STEP - 10 INSTALL JOINT PLUGS

ALL SURFACES AND GROOVES MUST BE CLEANED PER THE SEALANT MANUFACTURER'S RECOMMENDATIONS.

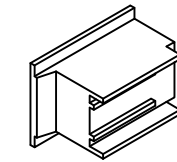
JUST BEFORE INSTALLING JOINT PLUGS APPLY SEALANT AS SHOWN FILLING GASKET POCKET AND ADAPTER GROOVE.



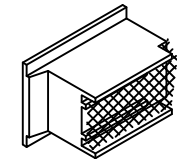
SECTION A-A



STEP - 10 INSTALL JOINT PLUGS

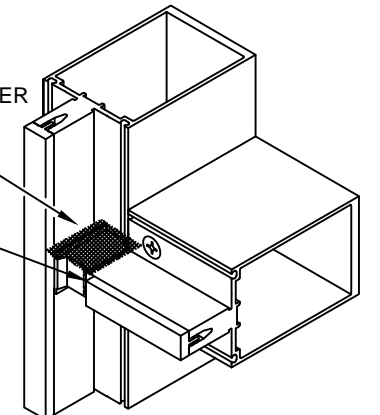


JOINT PLUG
178324 1" FRAMING



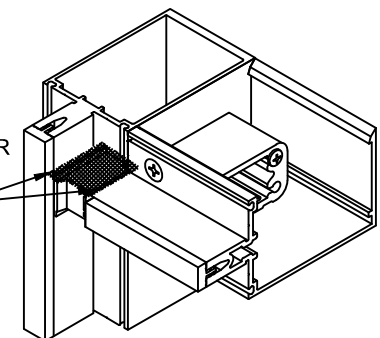
APPLY SEALANT TO THIS FACE OF JOINT PLUG

SEAL AROUND JOINT PLUG EDGES AND COMPLETELY OVER JOINT PLUG WITH SEALANT AND TOOL AS SHOWN.



SEALANT SHOULD BE NEATLY APPLIED TO PREVENT CONTACT WITH I.G. UNIT.

SEAL AROUND JOINT PLUG EDGES AND COMPLETELY OVER JOINT PLUG WITH SEALANT AND TOOL AS SHOWN



1620
INSTALLATION
INSTRUCTIONS

Product Engineering & Development

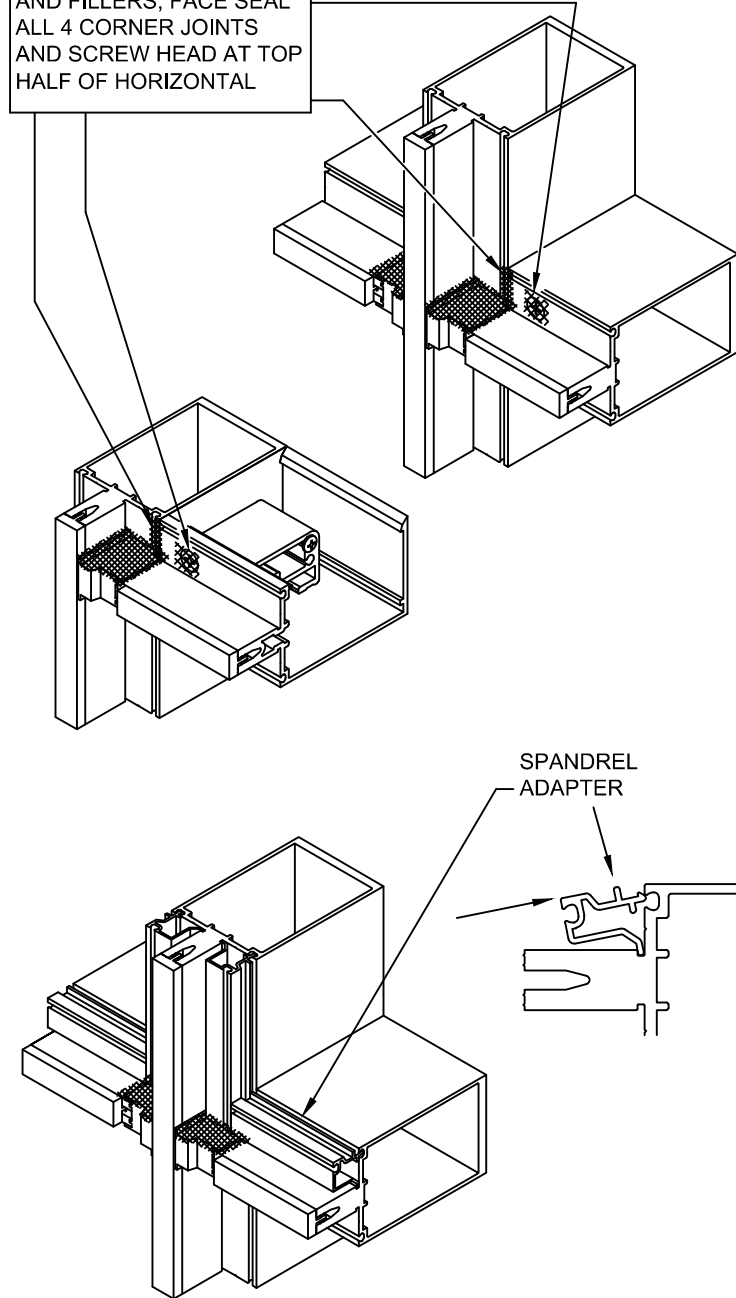
95525-005
02/21/14

178970 SHEET 04 OF 09

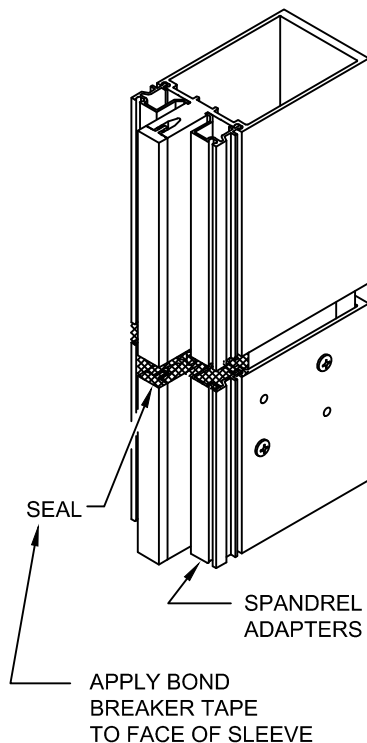
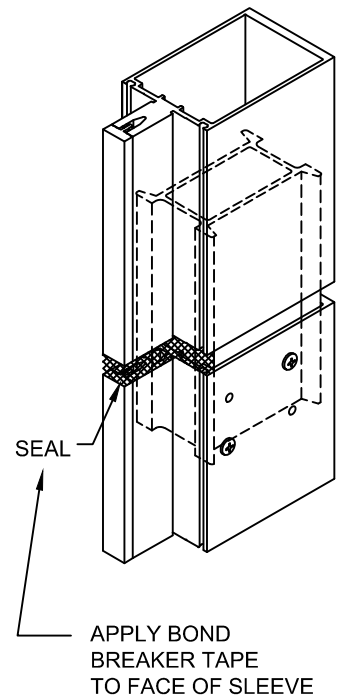
**STEP - 11 INSTALL PERIMETER
FILLERS AND
SPANDREL ADAPTERS
WHERE APPLICABLE**

ALL SURFACES AND GROOVES
MUST BE CLEANED PER THE
SEALANT MANUFACTURER'S
RECOMMENDATIONS.

PRIOR TO INSTALLING
SPANCREL ADAPTERS
AND FILLERS, FACE SEAL
ALL 4 CORNER JOINTS
AND SCREW HEAD AT TOP
HALF OF HORIZONTAL



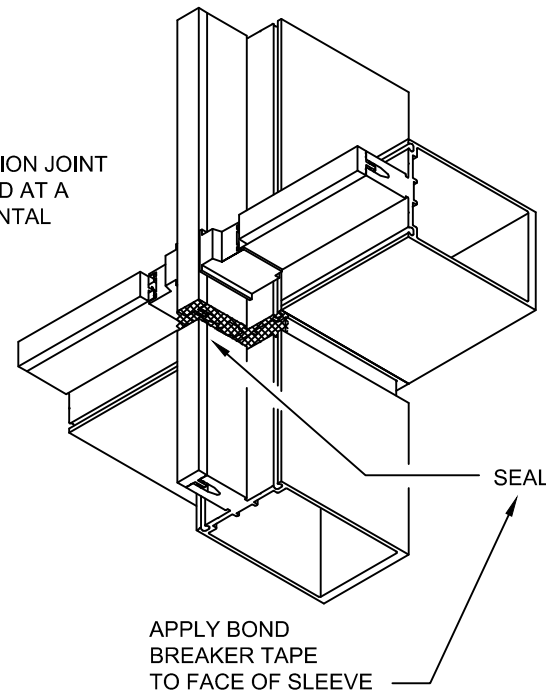
**STEP - 12 SEAL INTERIOR OF
VERTICAL SPLICE
JOINTS**



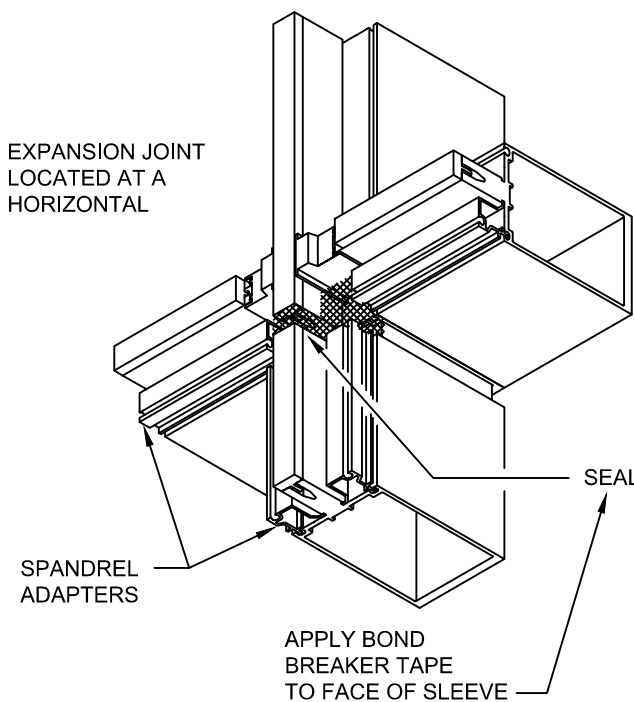
**STEP - 12 SEAL INTERIOR OF
VERTICAL SPLICE
JOINTS**

ALL SURFACES AND GROOVES MUST BE
CLEANED PER THE SEALANT MANUFACTURER'S
RECOMMENDATIONS.

EXPANSION JOINT
LOCATED AT A
HORIZONTAL



EXPANSION JOINT
LOCATED AT A
HORIZONTAL



CONFIDENTIAL AND PROPRIETARY INFORMATION
KAWNEER COMPANY INC.

THESE DRAWINGS ARE THE SOLE AND EXCLUSIVE PROPERTY OF KAWNEER AND CONTAIN SENSITIVE, PRIVILEGED OR CONFIDENTIAL INFORMATION WHICH MAY BE USED ONLY FOR ITS BENEFIT. THE DISCLOSURE OF THESE DRAWINGS TO UNAUTHORIZED PERSONS IS STRICTLY PROHIBITED. THIS DOCUMENT AND ALL COPIES MUST BE RETURNED UPON DEMAND.
© COPYRIGHT KAWNEER COMPANY, INC., 2014

**STEP - 13 INSTALL INTERIOR
GLAZING GASKETS**

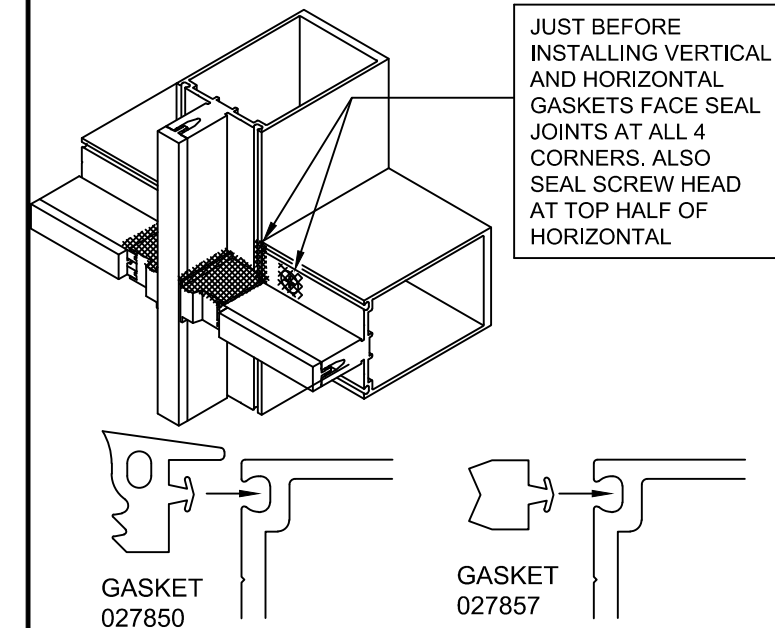
GASKETS SHOULD BE INSTALLED JUST PRIOR TO GLASS TO AVOID CONTAMINATION BY JOB SITE DEBRIS. GASKET GROOVES AND POCKETS SHOULD BE CLEAN.

IN TEMPERATURES COLDER THAN 50° F ARRANGEMENTS SHOULD BE MADE TO WARM GASKETS BEFORE INSTALLATION. THIS WILL PREVENT EXCESSIVE GLAZING PRESSURE ON THE GLASS DUE TO COLD, STIFF RUBBER GASKETS.

GASKETS CAN BECOME DEFORMED DURING STORAGE IN CARTONS. THEY SHOULD BE REMOVED FROM CARTONS SEVERAL HOURS PRIOR TO GLAZING AND LAID FLAT OR HUNG TO ALLOW RECOVERY OF CORRECT SHAPE. TEMPERATURES SHOULD BE AT LEAST 50° F TO ALLOW THIS.

GASKET INSTALLED LENGTH TO BE DAYLITE OPENING. GASKETS TO BE CUT LONG FOR SOME "CROWD-IN". GASKETS SHOULD NEVER BE "STRETCHED TO FIT".

"CROWD-IN" TO BE 1/8" PER FOOT UP TO 5'-0", 3/16" PER FOOT UP TO 8'-0", 1/4" PER FOOT OVER 8'-0".



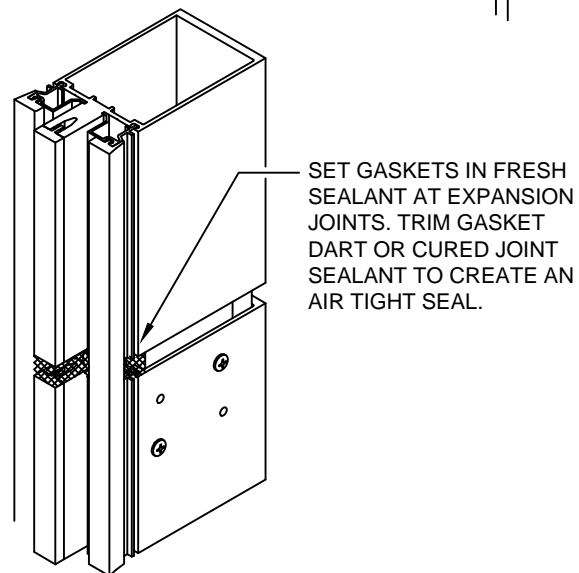
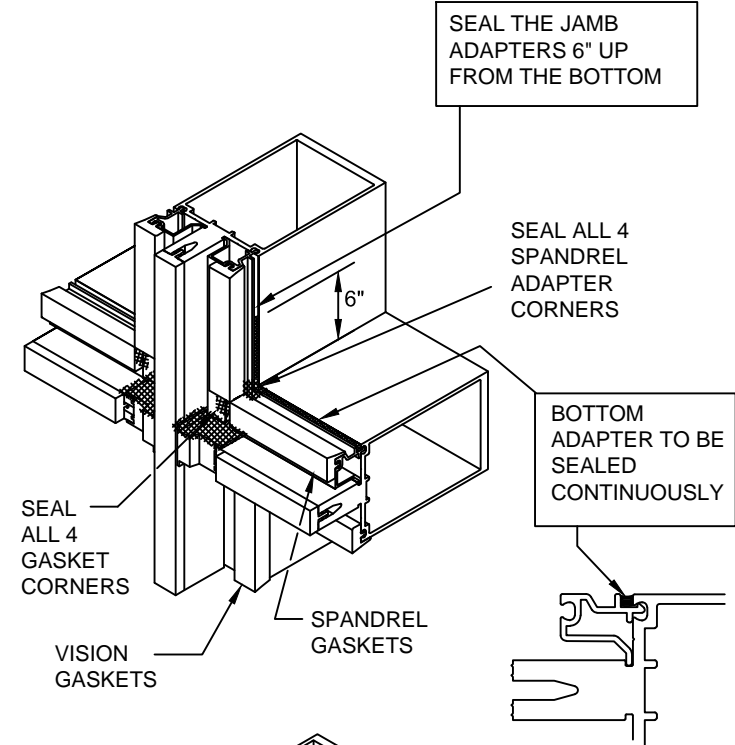
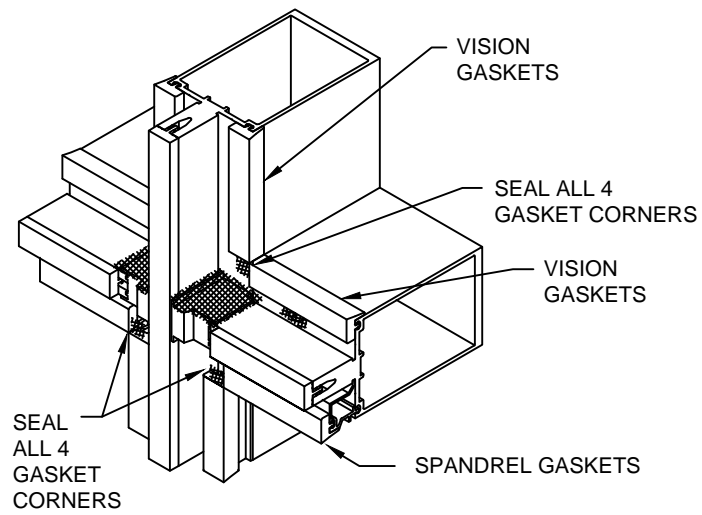
KAWNEER

1620
INSTALLATION
INSTRUCTIONS

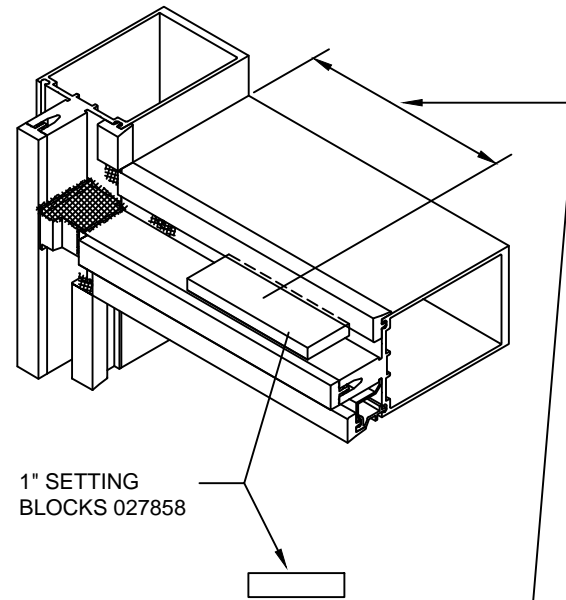
Product Engineering & Development

95525-005
02/21/14

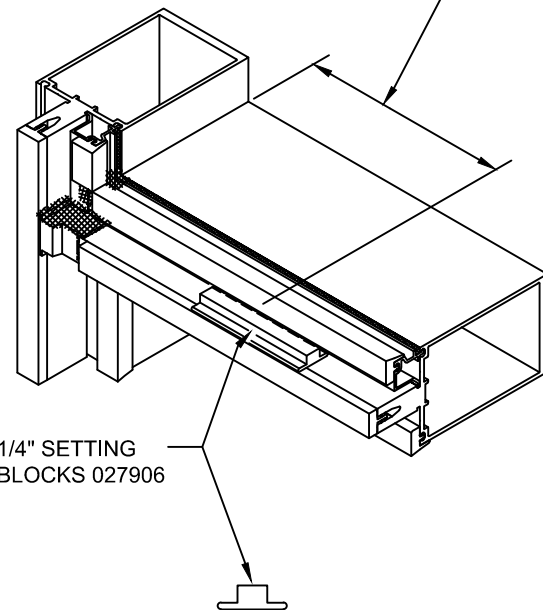
STEP - 13 INSTALL INTERIOR GLAZING GASKETS



STEP - 14 INSTALL SETTING BLOCKS

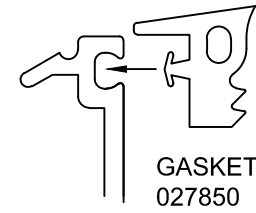


LOCATE SETTING BLOCKS PER APPROVED SHOP DRAWINGS OR DEADLOAD CHARTS

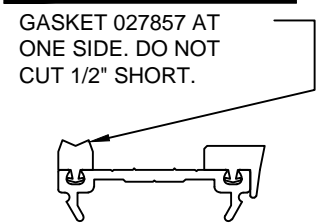
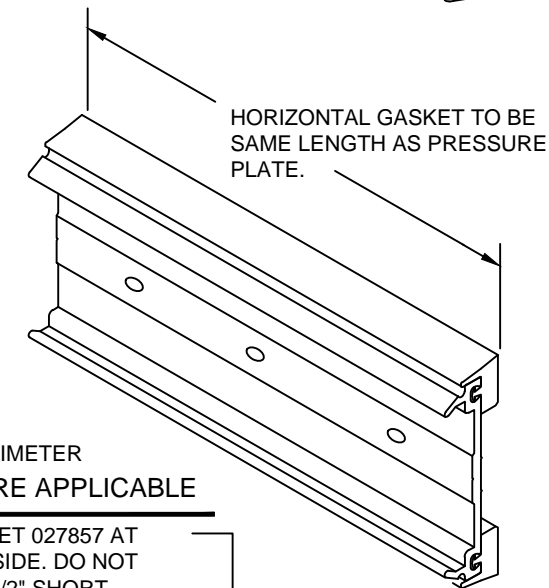
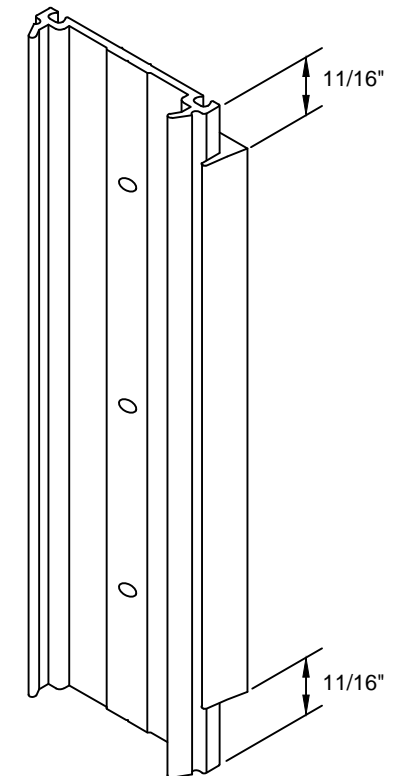
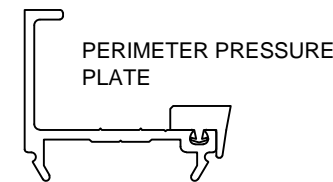


STEP - 15 INSTALL EXTERIOR GASKETS INTO PRESSURE PLATES

REFERENCE GASKET NOTES IN STEP 13
SAME NOTES APPLY.



VERTICAL GASKETS ARE TO RUN CONTINUOUS EXCEPT AT HEAD AND SILL CONDITIONS THE GASKET IS TO BE CUT 11/16" SHORT THIS IS FOR THE SEAL AT SECTION D-D STEP 17 - SHEET # 8



CONFIDENTIAL AND PROPRIETARY INFORMATION
KAWNEER COMPANY INC.

THESE DRAWINGS ARE THE SOLE AND EXCLUSIVE PROPERTY OF KAWNEER AND CONTAIN SENSITIVE, PRIVILEGED OR CONFIDENTIAL INFORMATION WHICH MAY BE USED ONLY FOR ITS BENEFIT. THE DISCLOSURE OF THESE DRAWINGS TO UNAUTHORIZED PERSONS IS STRICTLY PROHIBITED. THIS DOCUMENT AND ALL COPIES MUST BE RETURNED UPON DEMAND.
© COPYRIGHT KAWNEER COMPANY, INC., 2014

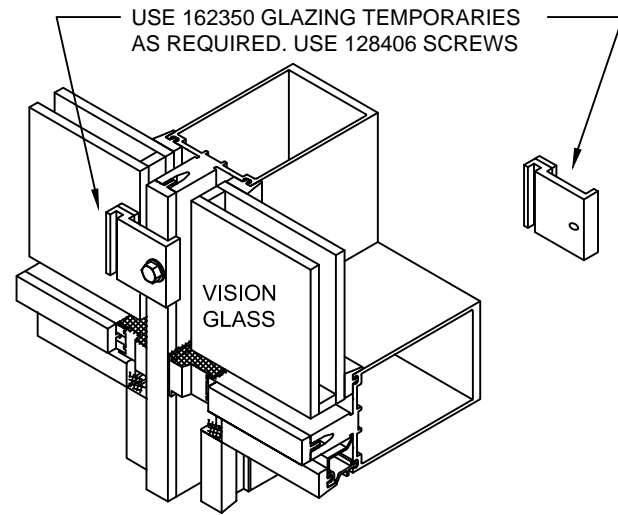


1620
INSTALLATION
INSTRUCTIONS

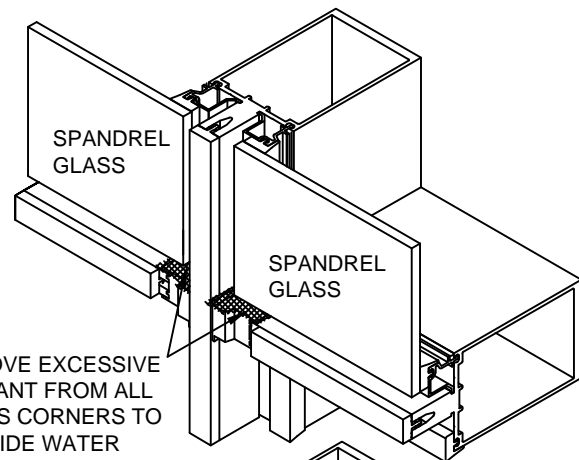
Product Engineering & Development

95525-005
02/21/14

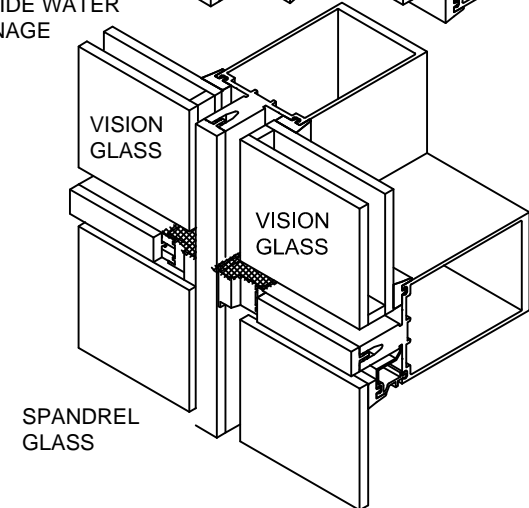
STEP - 17 INSTALL GLASS



MAXIMUM TEMPORARY SPACING IS 30".
IF WINDS GREATER THAN 50 MPH (80KPH) ARE EXPECTED, ADDITIONAL TEMPORARIES MAY BE REQUIRED. CONSULT YOUR SEALANT AND/OR INFILL SUPPLIER FOR SPACING RECOMMENDATIONS. INSTALL PRESSURE PLATES WHERE POSSIBLE.



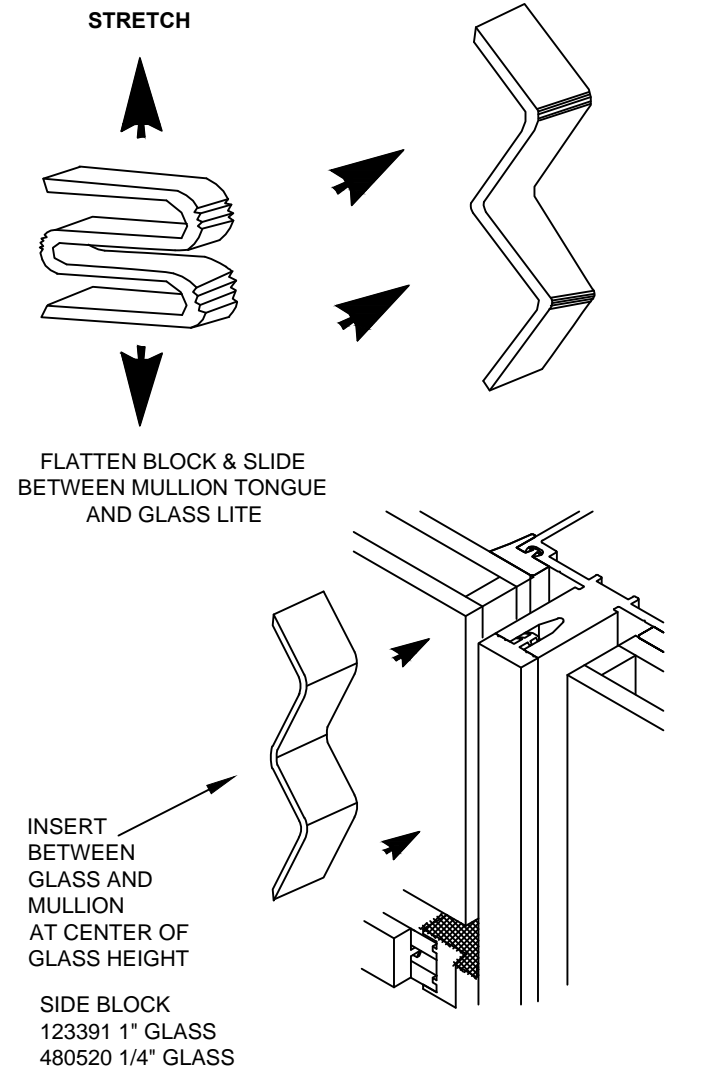
REMOVE EXCESSIVE SEALANT FROM ALL GLASS CORNERS TO PROVIDE WATER DRAINAGE



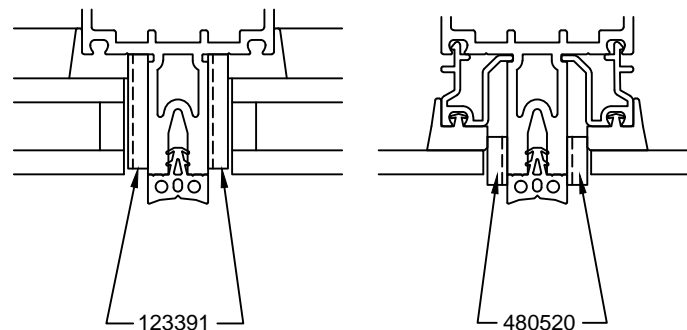
SPANDREL GLASS

SPANDREL GLASS

STEP - 17 INSTALL GLASS SIDE BLOCKS



SIDE BLOCK
123391 1" GLASS
480520 1/4" GLASS



1" GLASS

1/4" GLASS

INSTALL SIDE BLOCKS, COMPRESSING AS SHOWN

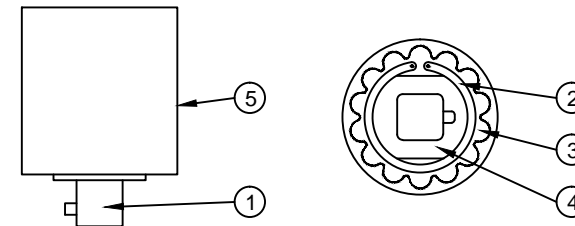
STEP - 18 INSTALL EXTERIOR PRESSURE PLATES



RECOMMEND USING TORQUE LIMIT TOOL 162399 SEE NOTE.

HOW TO SET TORQUE LIMIT

1. ATTACH ANY CALIBRATED TORQUE INDICATOR TO OUTPUT STUB (1) AND DETERMINE PRESENT TORQUE SETTING WHILE HOLDING THE BODY (5), OR VICE-VERSA.
2. REMOVE SNAP RING (2) AND LOCKING PLATE (3).
3. ADJUST NUT (4) WITH OPEN-END WRENCH : CLOCKWISE TO INCREASE TORQUE, COUNTER- CLOCKWISE TO DECREASE TORQUE.
4. OBTAIN NEW TORQUE READING WITH THE CALIBRATED TORQUE INDICATOR. REPEAT PRECEDING STEP IF MORE ADJUSTMENT IS NECESSARY TO REACH DESIRED LIMIT.
5. REPLACE LOCKING PLATE INTO NOTCHES AND INSTALL SNAP RING. IF LOCKING PLATE DOES NOT "SEAT", MOVE THE ADJUSTING NUT SLIGHTLY UNTIL IT DROPS IN PLACE. THE DIRECTION IS BEST DETERMINED BY WHETHER A MINIMUM TORQUE APPLICATION OR A MAXIMUM ONE IS DESIRED.



INSTALL PRESSURE PLATES USING SCREWS 128406 1/4-14 X 1" HEX WASHER HEAD TYPE AB.

SCREWS ARE TO BE LOCATED 9" ON CENTER. ALWAYS LOCATE A SCREW AS CLOSE AS POSSIBLE TO A HORIZONTAL JOINT. THIS WILL PROVIDE MAXIMUM PRESSURE FOR THE CRITICAL JOINT SEALS.

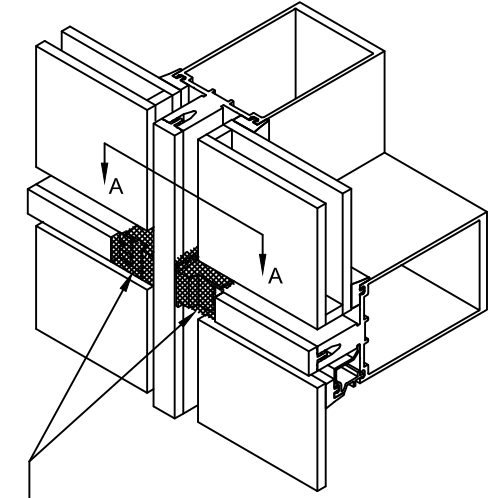
INSTALL HORIZONTAL PRESSURE PLATES WITH WEEP HOLES TOWARDS TOP OF HORIZONTAL.

AT EACH HORIZONTAL AND VERTICAL PRESSURE PLATE INSTALL TWO SCREWS PART WAY, THEN INSTALL THE THIRD SCREW ALL THE WAY, AND THEN TIGHTEN THE FIRST TWO SCREWS. THIS ELIMINATES LATERAL WALKING OF THE PRESSURE PLATE POSITION.

TORQUE ALL SCREWS TO 95 TO 100 INCH POUNDS. DURING COLD WEATHER, TORQUE SCREWS TO 50 INCH POUNDS UNTIL ALL 4 SIDES HAVE BEEN CLAMPED. THEN TORQUE SCREWS TO 95 TO 100 INCH POUNDS.

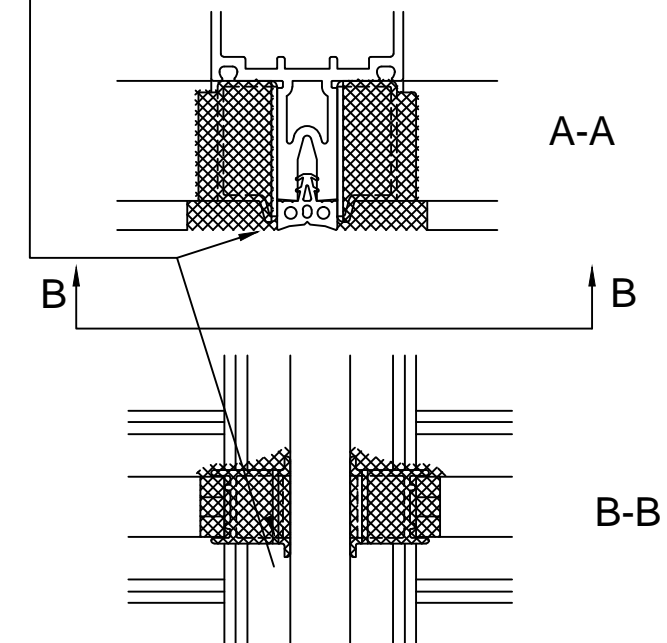
THESE DRAWINGS ARE THE SOLE AND EXCLUSIVE PROPERTY OF KAWNEER AND CONTAIN SENSITIVE, PRIVILEGED OR CONFIDENTIAL INFORMATION WHICH MAY BE USED ONLY FOR ITS BENEFIT. THE DISCLOSURE OF THESE DRAWINGS TO UNAUTHORIZED PERSONS IS STRICTLY PROHIBITED. THIS DOCUMENT AND ALL COPIES MUST BE RETURNED UPON DEMAND.
© COPYRIGHT KAWNEER COMPANY, INC., 2014

STEP - 18 INSTALL EXTERIOR PRESSURE PLATES



JUST BEFORE INSTALLING VERTICAL PRESSURE PLATES APPLY A GENEROUS AMOUNT OF SEALANT TO THE JOINT PLUG FACE FILLING JOINTS AS SHOWN.

CLEAN JOINT PER SEALANT MANUFACTURER'S RECOMMENDATIONS



1620
INSTALLATION
INSTRUCTIONS

Product Engineering & Development

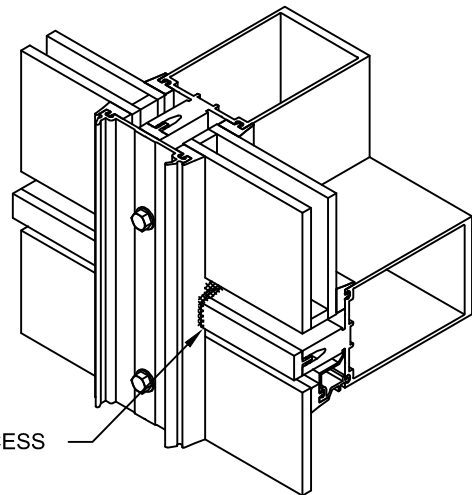
95525-005
02/21/14

STEP - 17 INSTALL EXTERIOR PRESSURE PLATES

INSTALL VERTICAL PRESSURE PLATES

NOTE - THE TORQUE LIMIT TOOL WAS DESIGNED TO BE USED WITH A HAND DRIVEN DEVICE. THE TOOL CAN BE ADAPTED TO A DRILL MOTOR IF USED AT A MAXIMUM SPEED OF APPROX. 300 RPM. HIGHER SPEEDS CAN CAUSE OVERHEATING AND AFFECT THE ACCURACY. AFTER APPROX. 1 HOUR OF TOOL USAGE CHECK TORQUE SETTINGS WITH A TORQUE WRENCH.

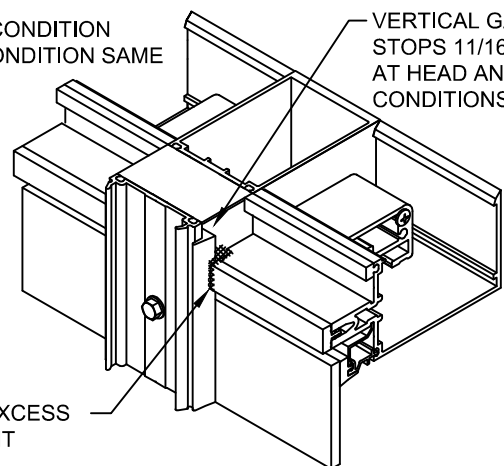
INTERMEDIATE HORIZONTAL VISION OVER SPANDREL



HEAD CONDITION SILL CONDITION SAME

VERTICAL GASKET STOPS 11/16" SHORT AT HEAD AND SILL CONDITIONS

TOOL EXCESS SEALANT

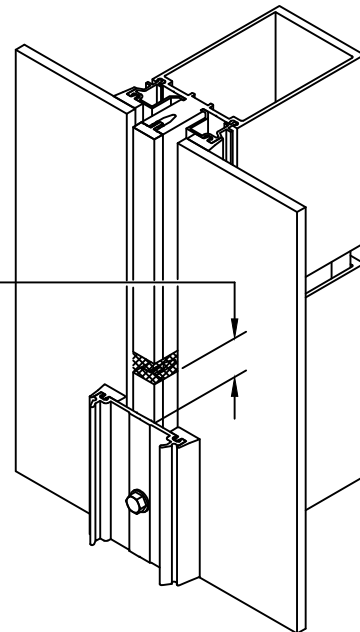


STEP - 18 INSTALL EXTERIOR PRESSURE PLATES

INSTALL VERTICAL PRESSURE PLATES

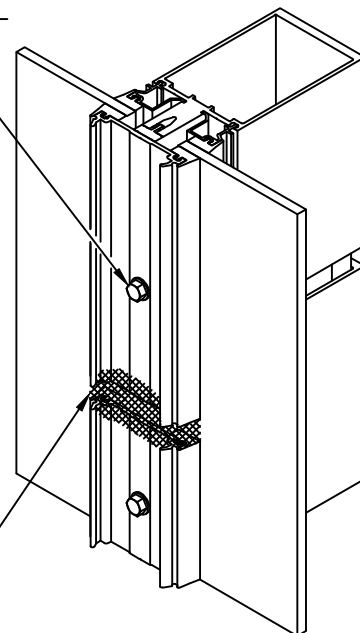
VERTICAL EXPANSION JOINTS

TOP OF VERTICAL MULLION TO TOP OF PRESSURE PLATE IS 1-1/2"



AT TOP PRESSURE PLATE LOCATE SCREW CLOSE TO THE MULLION JOINT BUT NOT BELOW THE JOINT.

CLEAN JOINT PER SEALANT MANUFACTURER'S RECOMMENDATIONS

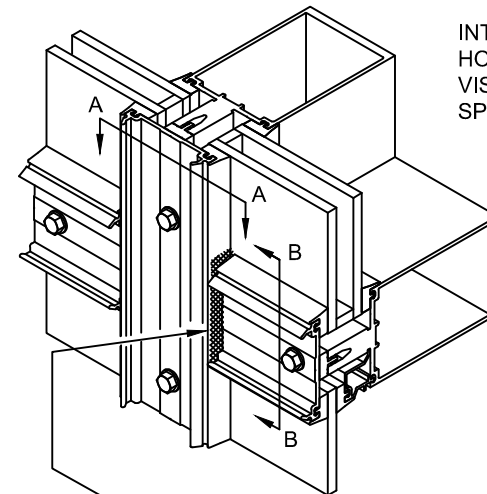


COMPLETELY SEAL JOINT. DO NOT LET SEALANT INTERFERE WITH COVER SNAP. OVERLAP PRESSURE PLATE FACE CREATING A BAND-AID SEAL.

STEP - 18 INSTALL EXTERIOR PRESSURE PLATES

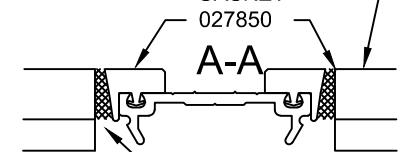
INSTALL HORIZONTAL PRESSURE PLATES

CENTER HORIZONTAL PRESSURE PLATES SO END GAPS ARE EQUAL.



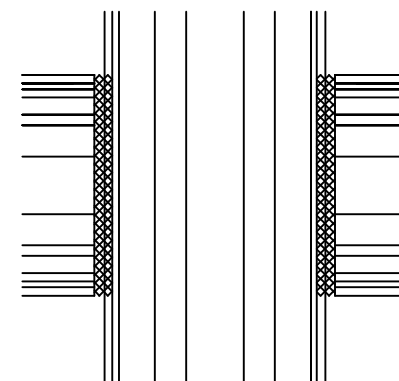
INTERMEDIATE HORIZONTAL VISION OVER SPANDREL

SEAL JOINTS AS SHOWN. TOOL SEALANT. THIS SEAL IS TO JOIN AND ADHERE TO THE JOINT PLUG SEALS.



DO NOT LET THE SEAL INTERFERE WITH THE COVER SNAP

GASKET 027850



GASKET 027850

B-B

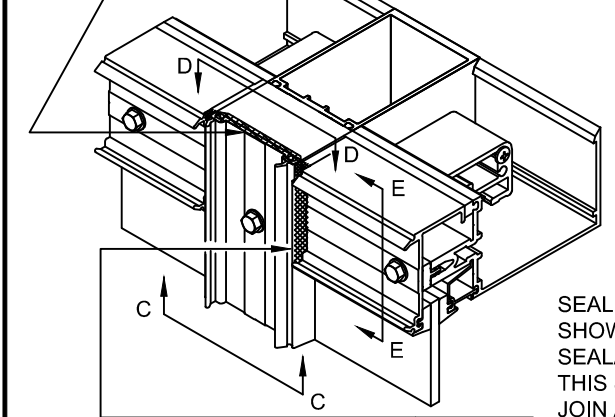
CONFIDENTIAL AND PROPRIETARY INFORMATION
KAWNEER COMPANY INC.

THESE DRAWINGS ARE THE SOLE AND EXCLUSIVE PROPERTY OF KAWNEER AND CONTAIN SENSITIVE, PRIVILEGED OR CONFIDENTIAL INFORMATION WHICH MAY BE USED ONLY FOR ITS BENEFIT. THE DISCLOSURE OF THESE DRAWINGS TO UNAUTHORIZED PERSONS IS STRICTLY PROHIBITED. THIS DOCUMENT AND ALL COPIES MUST BE RETURNED UPON DEMAND.
© COPYRIGHT KAWNEER COMPANY, INC., 2014

STEP - 18 INSTALL EXTERIOR PRESSURE PLATES

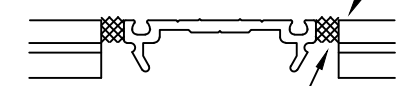
SEAL BETWEEN PRESSURE PLATE AND HEAD/SILL END CAP AS SHOWN.

HEAD CONDITION SILL CONDITION SAME



SEAL JOINTS AS SHOWN. TOOL SEALANT. THIS SEAL IS TO JOIN AND ADHERE TO THE JOINT PLUG SEALS.

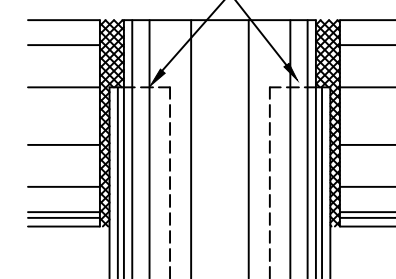
D-D



CLEAN JOINT PER SEALANT MANUFACTURER'S RECOMMENDATIONS

DO NOT LET THE SEAL INTERFERE WITH THE COVER SNAP.

VERTICAL GASKET STOPS 11/16" SHORT OF END.

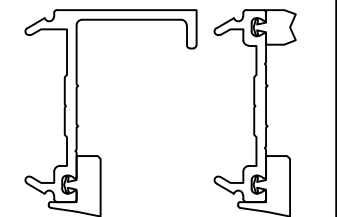


FACE VIEW

DO NOT LET THE SEAL INTERFERE WITH THE COVER SNAP.

E-E

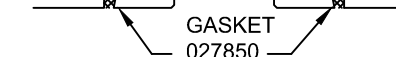
GASKET 027857



GASKET 027850

GASKET 027850

C-C



GASKET 027850

KAWNEER

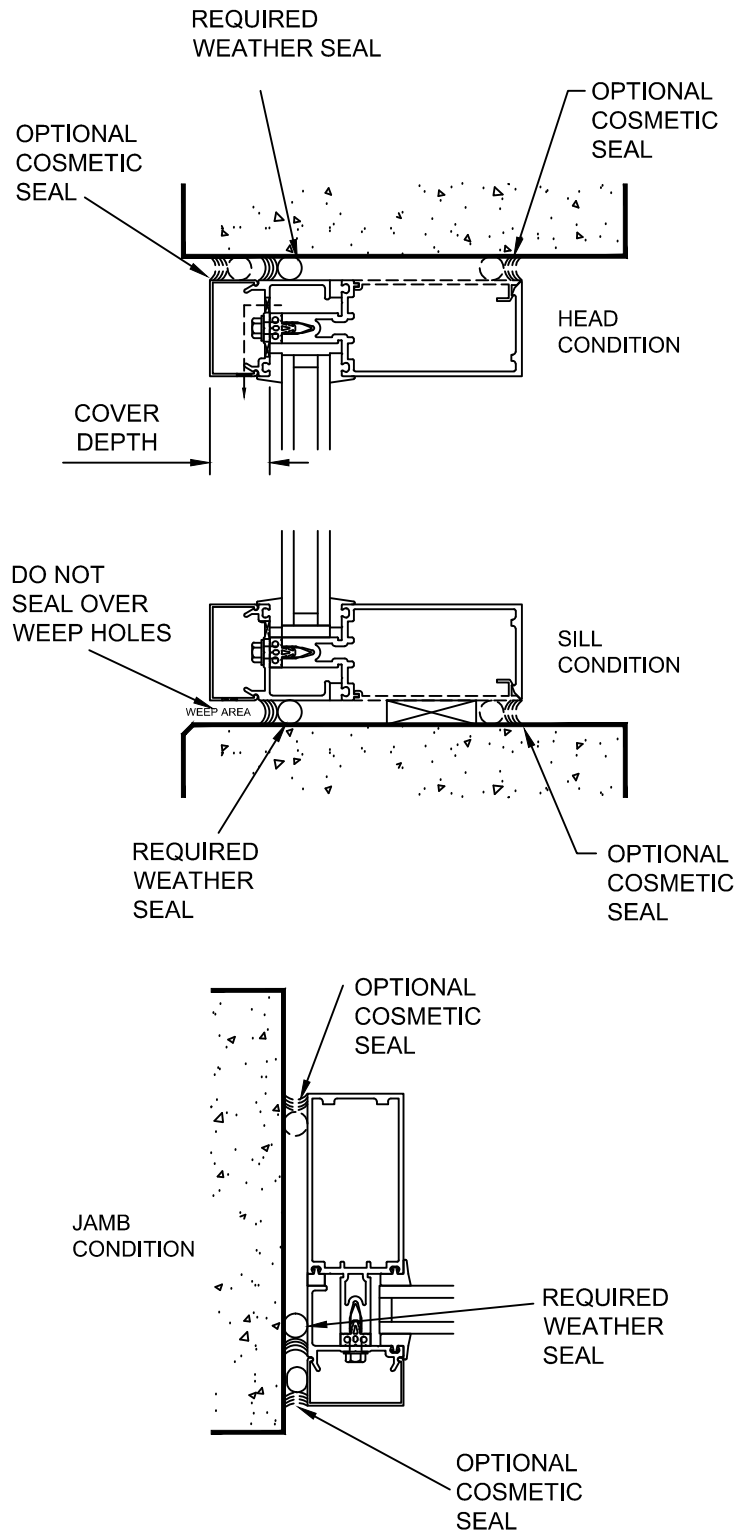
1620
INSTALLATION
INSTRUCTIONS

Product Engineering & Development

95525-005
02/21/14

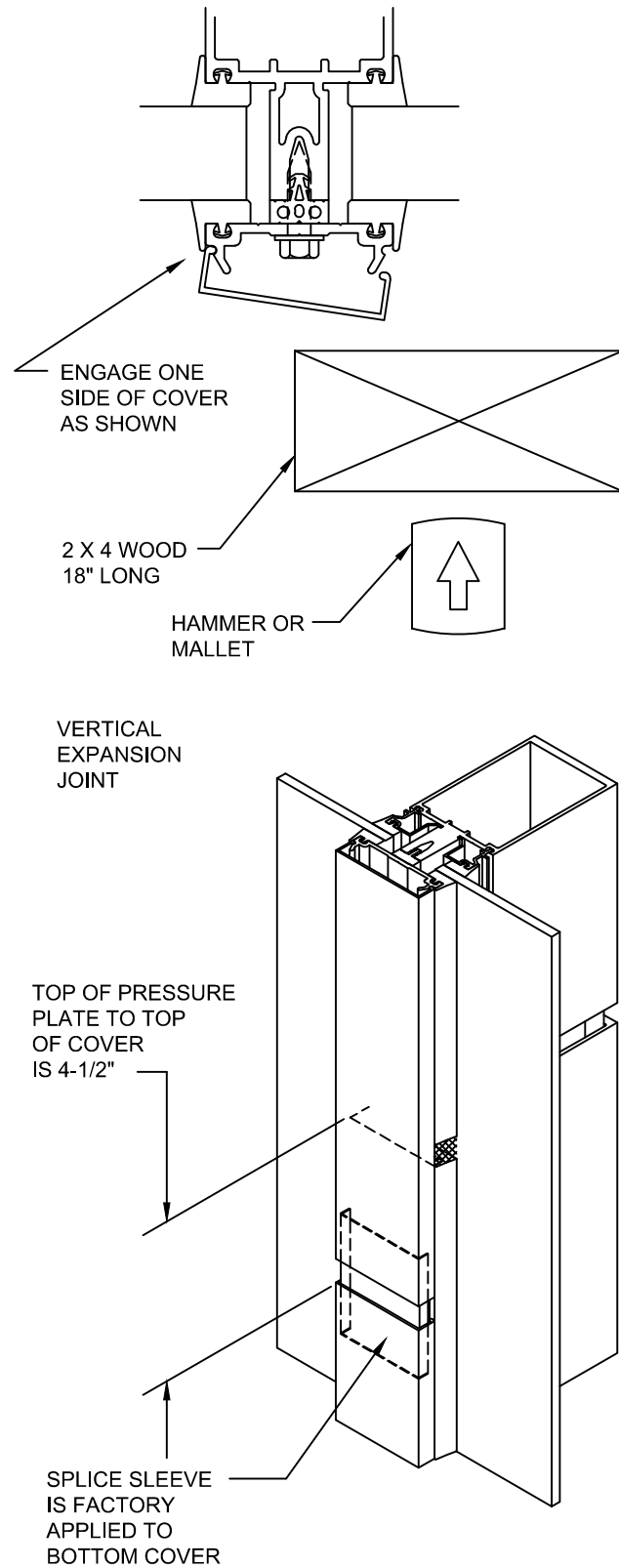
STEP - 19 INSTALL PERIMETER WEATHER SEALS

PERIMETER WEATHER SEALS ARE INSTALLED AT THE PRESSURE PLATE LOCATION AS DETAILED BELOW. (THIS SEAL SHOULD BE INSTALLED BEFORE COVERS ARE APPLIED WHEN COVERS DEEPER THAN 3/4" ARE USED) EXTERIOR COSMETIC SEALS AT THE COVER MAY BE APPLIED AT THE HEAD, JAMB AND SILL. COSMETIC SEAL AT SILL COVERS MUST ALLOW WATER DRAINAGE TO THE EXTERIOR.



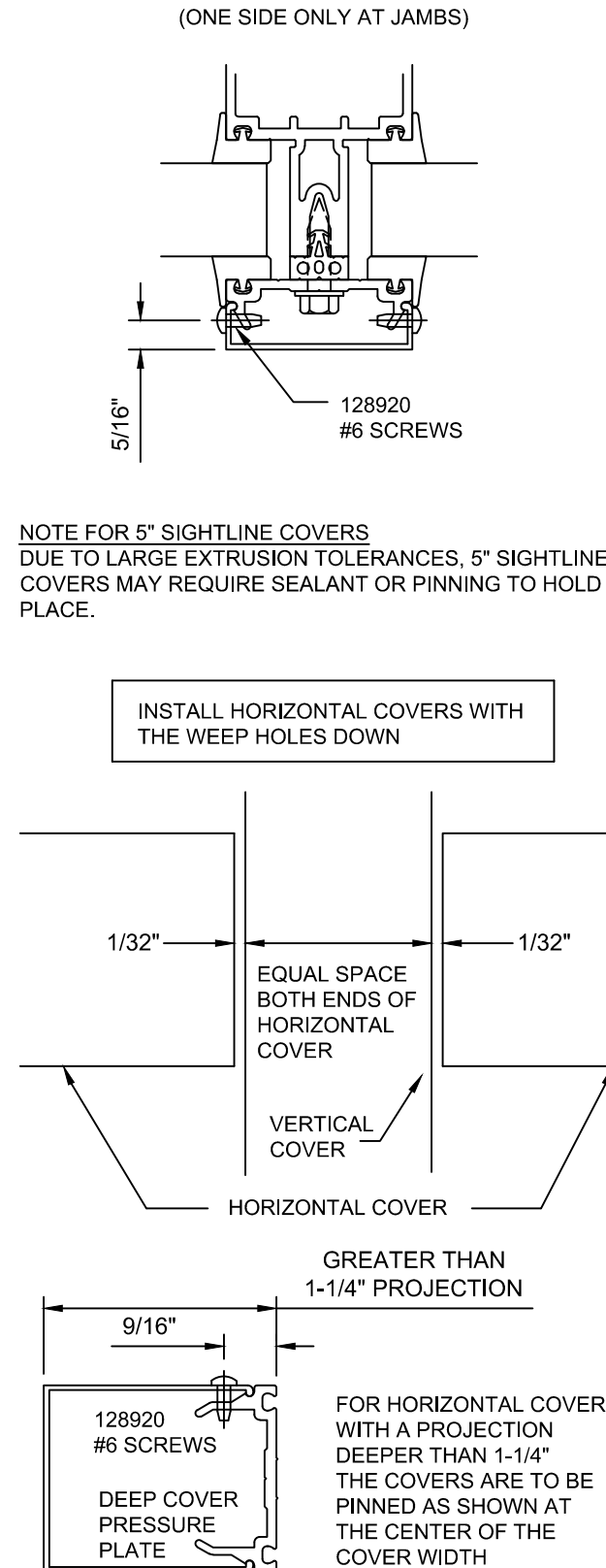
STEP - 20 INSTALL EXTERIOR COVERS

CARE MUST BE TAKEN TO AVOID DAMAGE TO COVERS DURING INSTALLATION. USE A 18" LONG PIECE OF 2 X 4 WOOD ALONG WITH A HAMMER OR MALLET TO SEAT THE COVER.



STEP - 20 INSTALL EXTERIOR COVERS

PINNING OF ALL VERTICAL COVERS IS REQUIRED FOR BOTH SIDES. DRILL A .106 DIA. HOLE (#36 DRILL) AND INSTALL 128920 SCREWS #6 X 3/8" PAN HEAD TYPE B. LOCATE PINNING AT A HORIZONTAL CLOSEST TO THE COVER HEIGHT CENTER.

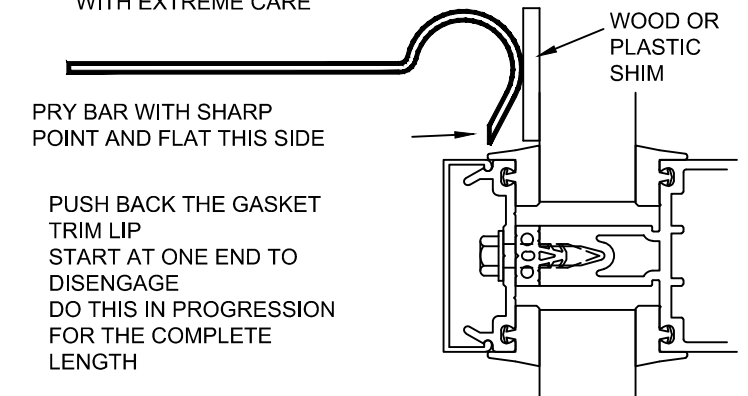


CONFIDENTIAL AND PROPRIETARY INFORMATION
KAWNEER COMPANY INC.

THESE DRAWINGS ARE THE SOLE AND EXCLUSIVE PROPERTY OF KAWNEER AND CONTAIN SENSITIVE, PRIVILEGED OR CONFIDENTIAL INFORMATION WHICH MAY BE USED ONLY FOR ITS BENEFIT. THE DISCLOSURE OF THESE DRAWINGS TO UNAUTHORIZED PERSONS IS STRICTLY PROHIBITED. THIS DOCUMENT AND ALL COPIES MUST BE RETURNED UPON DEMAND.
© COPYRIGHT KAWNEER COMPANY, INC., 2014

REMOVING COVERS

COVERS CAN BE SAVED IF TOLERANCES ARE NOT TOO TIGHT AND THE COVER IS REMOVED WITH EXTREME CARE



KAWNEER

1620
INSTALLATION
INSTRUCTIONS

Product Engineering & Development

95525-005
02/21/14