

USE THESE INSTRUCTIONS IN CONJUNCTION WITH INSTALLATION INSTRUCTIONS 171910.

90° OUTSIDE CORNER

CORNER NOTES:

INSTALL END CAPS PER SHEET #2.

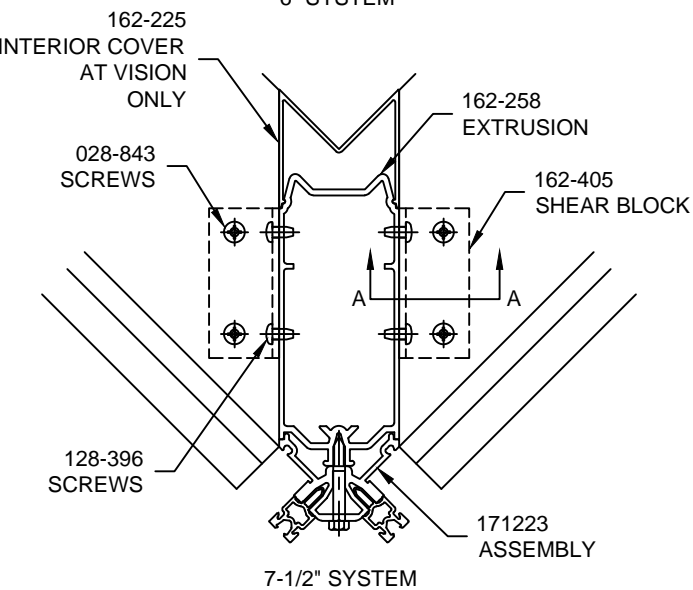
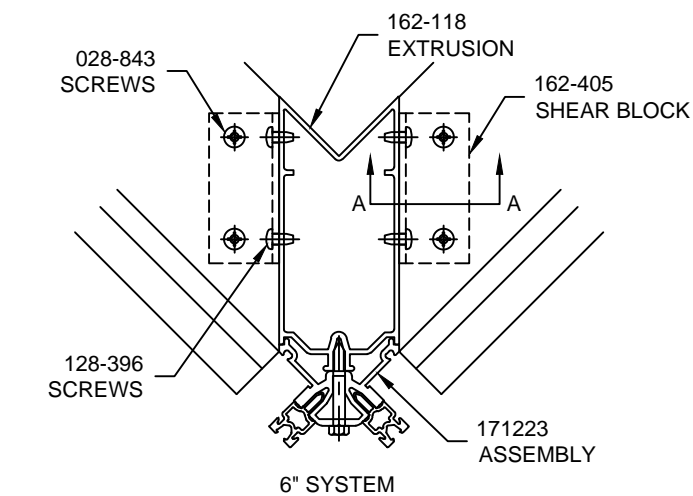
STANDARD JOINT PLUGS AND SEALING METHODS ARE USED UNLESS NOTED OTHERWISE IN THE FOLLOWING DETAILS.

GASKETS, PRESSURE PLATES AND EXTERIOR COVERS ARE INSTALLED AND SEALED THE SAME AS SHOWN IN INSTRUCTIONS 171910.

GLAZING TEMPORARIES ARE NOT INCLUDED FOR CORNER CONDITIONS.

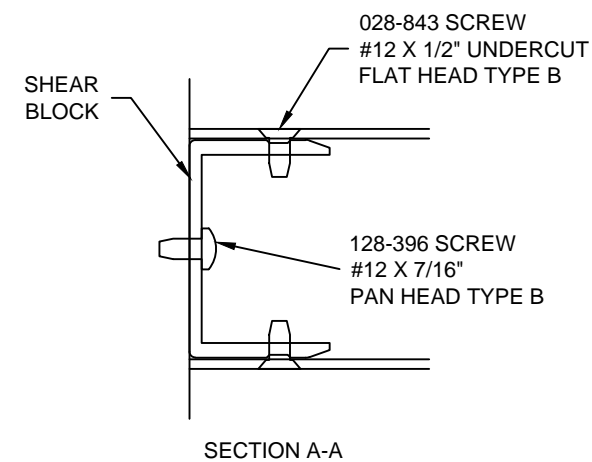
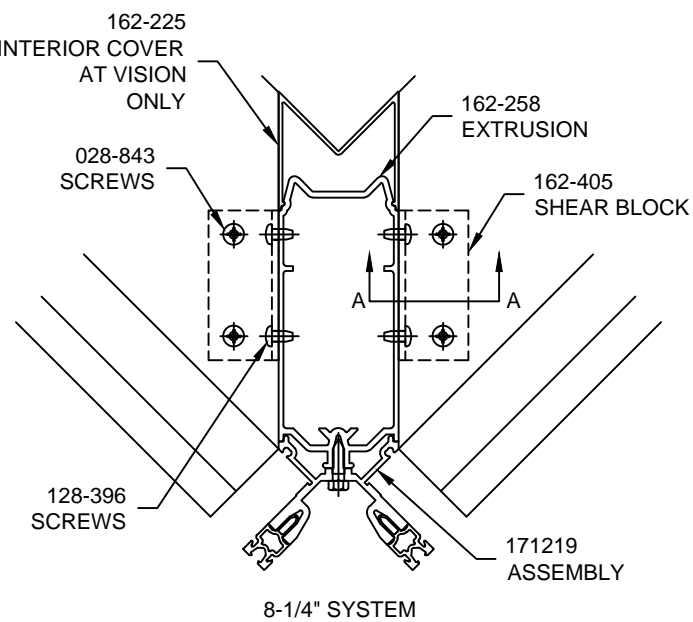
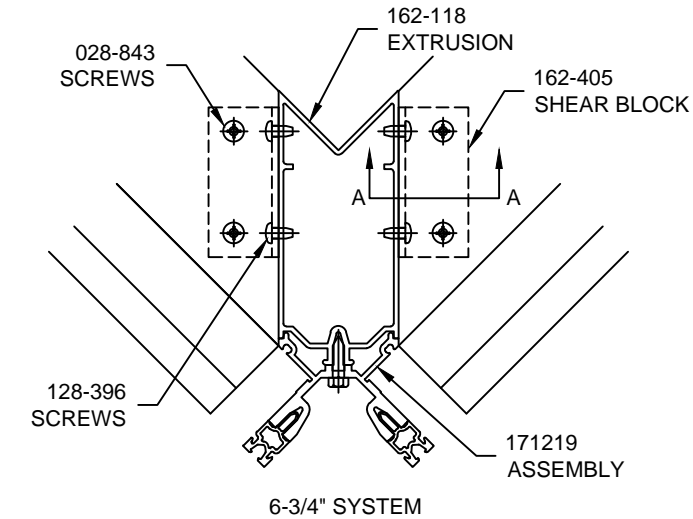
NOTE:
USE TUBULAR HORIZONTALS WHERE POSSIBLE. WHEN USING OPEN BACK HORIZONTALS AT CORNER MULLIONS, OPEN BACK FILLER AND HORIZONTAL MAY INTERFERE WITH SHEAR BLOCK. NOTCH PARTS FOR CLEARANCE AS NECESSARY.

SHEAR BLOCK ASSEMBLY



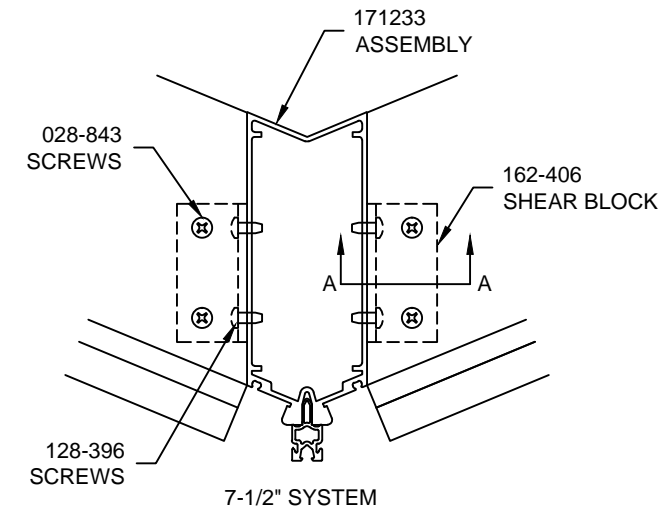
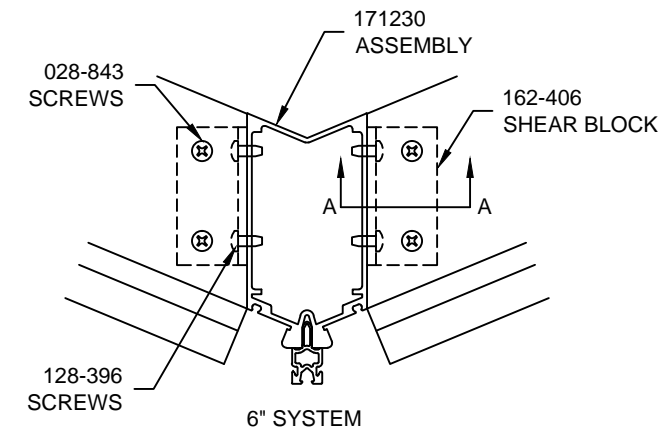
90° OUTSIDE CORNER

SHEAR BLOCK ASSEMBLY



135° OUTSIDE CORNER

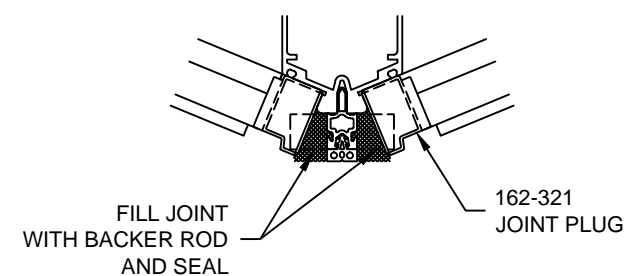
SHEAR BLOCK ASSEMBLY



ADDITIONAL SEAL FOR ABOVE CORNER MULLIONS

AT JOINT PLUGS FILL VOID BETWEEN THERMAL SEPARATOR AND JOINT PLUG WITH BACKER ROD AND SEALANT.

SEAL AT THE SAME TIME AS THE TYPICAL INSTRUCTIONS DO.

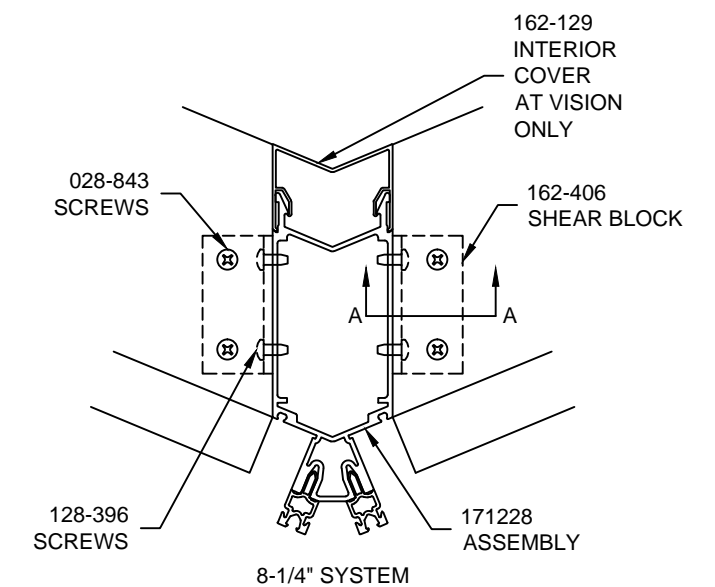
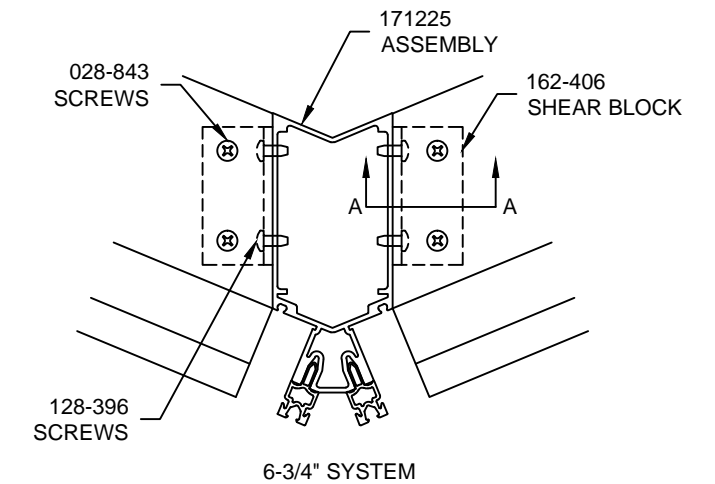


CONFIDENTIAL AND PROPRIETARY INFORMATION
KAWNEER COMPANY INC.

THESE DRAWINGS ARE THE SOLE AND EXCLUSIVE PROPERTY OF KAWNEER AND CONTAIN SENSITIVE, PRIVILEGED OR CONFIDENTIAL INFORMATION WHICH MAY BE USED ONLY FOR ITS BENEFIT. THE DISCLOSURE OF THESE DRAWINGS TO UNAUTHORIZED PERSONS IS STRICTLY PROHIBITED. THIS DOCUMENT AND ALL COPIES MUST BE RETURNED UPON DEMAND.
© COPYRIGHT KAWNEER COMPANY, INC., 2011

135° OUTSIDE CORNER

SHEAR BLOCK ASSEMBLY



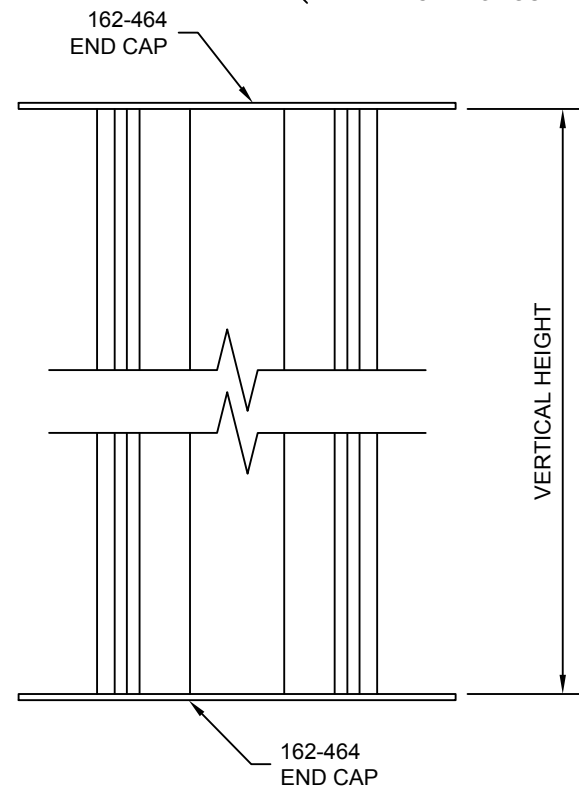
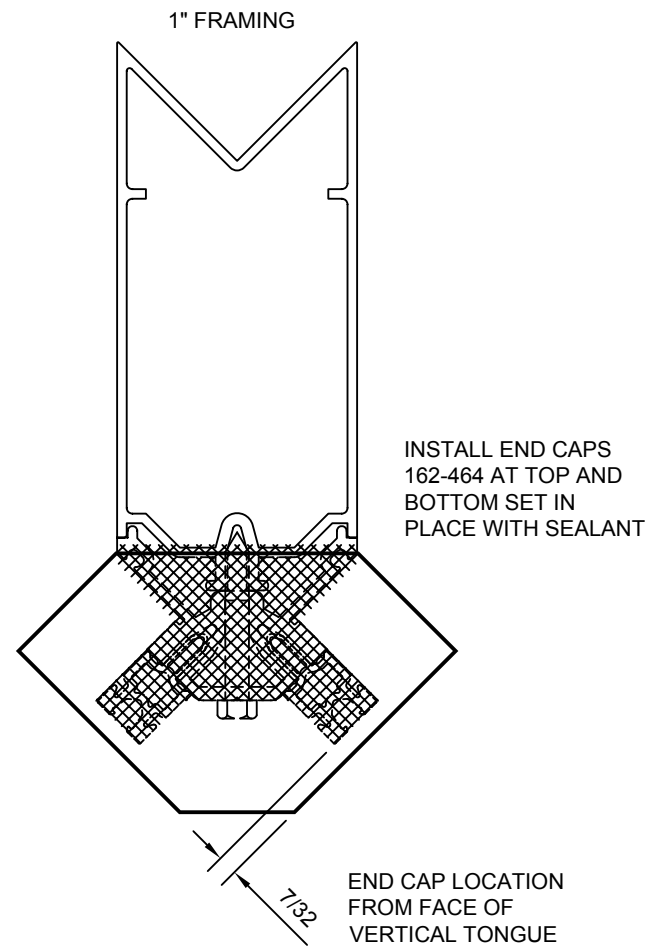
1600UT SYSTEM 1
CORNER
INSTRUCTIONS

Product Engineering & Development

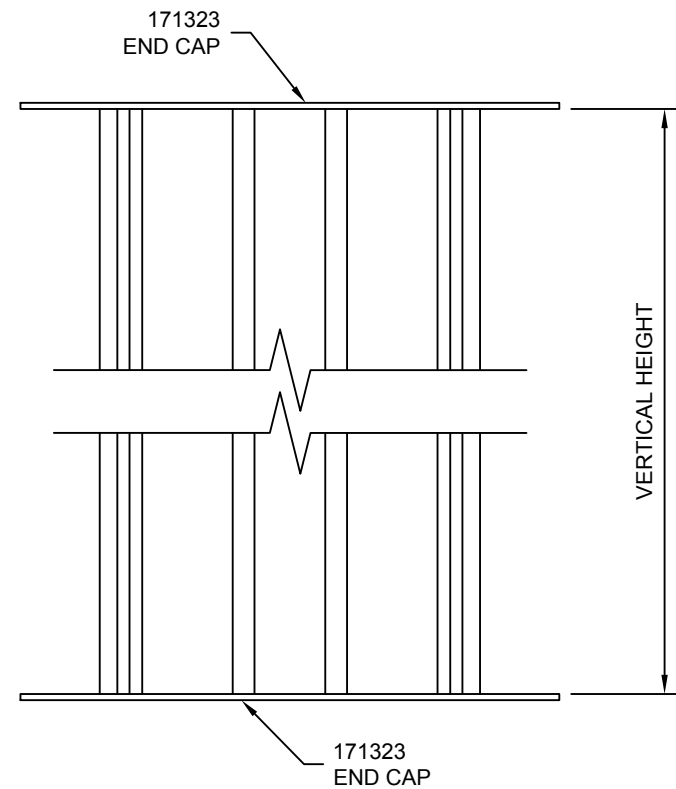
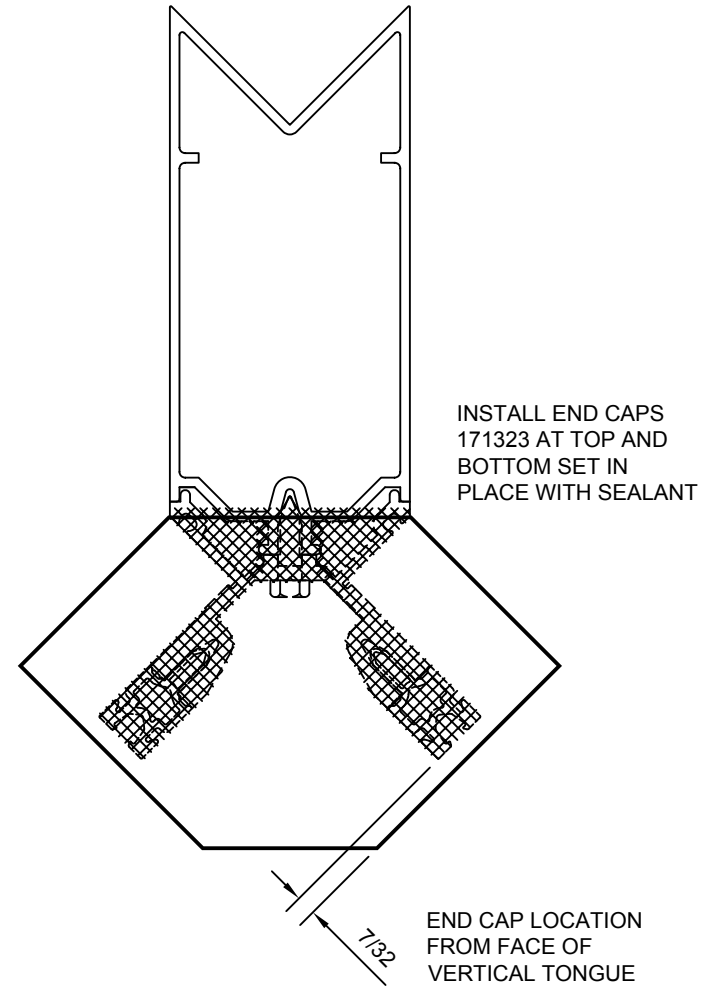
95449-88
05/21/12

90° OUTSIDE CORNER

MULLION END CAPS

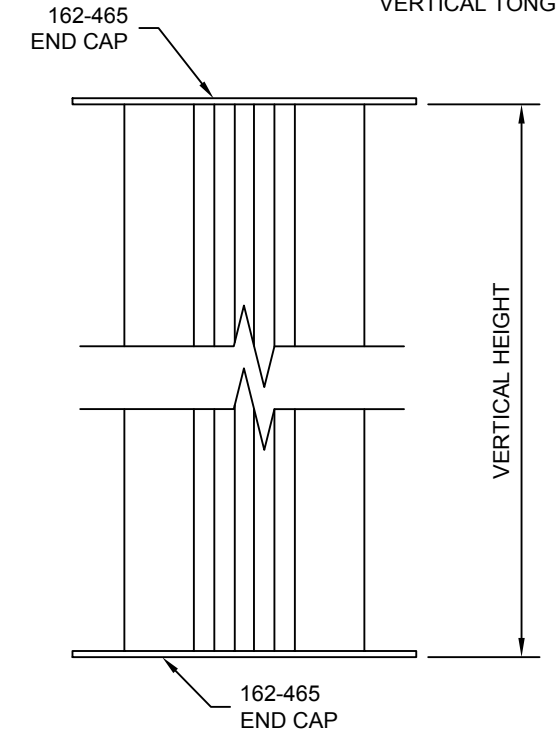
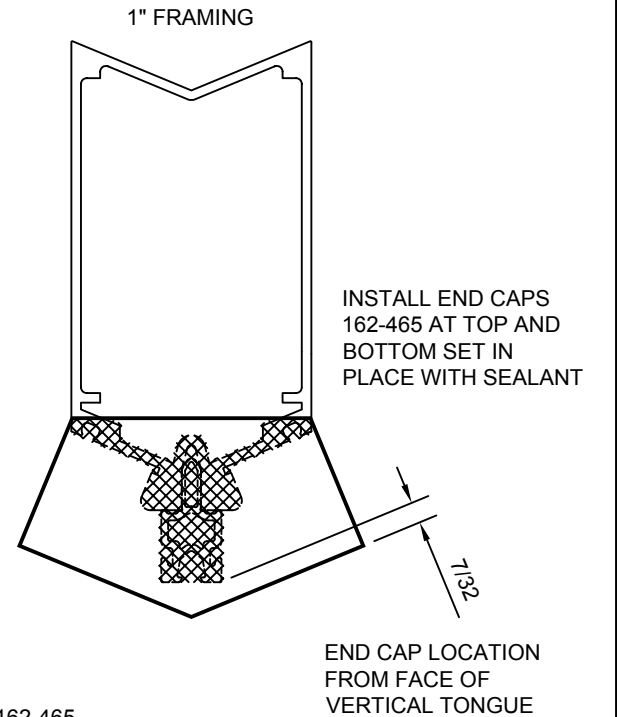
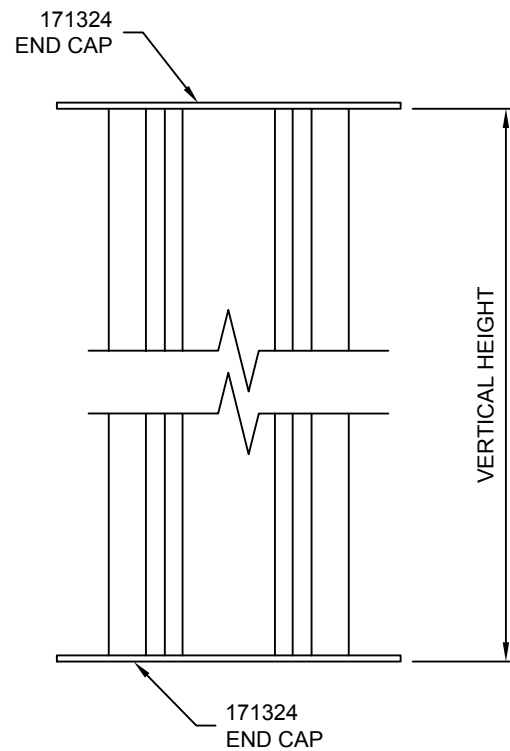
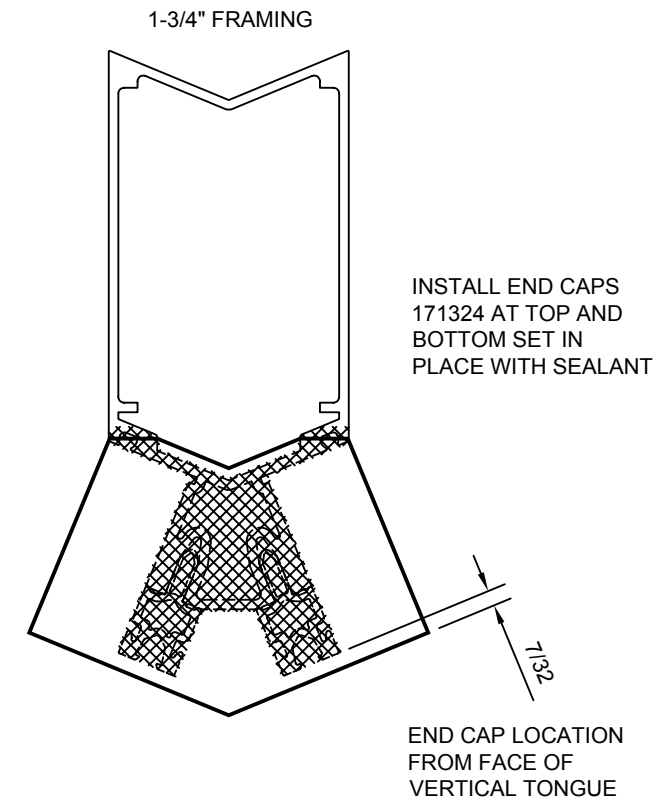


1-3/4" FRAMING



135° OUTSIDE CORNER

MULLION END CAPS



1600UT SYSTEM 1
CORNER
INSTRUCTIONS

Product Engineering & Development

95449-82
06/24/11

CONFIDENTIAL AND PROPRIETARY INFORMATION
KAWNEER COMPANY INC.

THESE DRAWINGS ARE THE SOLE AND EXCLUSIVE PROPERTY OF KAWNEER AND CONTAIN SENSITIVE, PRIVILEGED OR CONFIDENTIAL INFORMATION WHICH MAY BE USED ONLY FOR ITS BENEFIT. THE DISCLOSURE OF THESE DRAWINGS TO UNAUTHORIZED PERSONS IS STRICTLY PROHIBITED. THIS DOCUMENT AND ALL COPIES MUST BE RETURNED UPON DEMAND.
© COPYRIGHT KAWNEER COMPANY, INC., 2011

**90° OUTSIDE CORNER
1" FRAME**

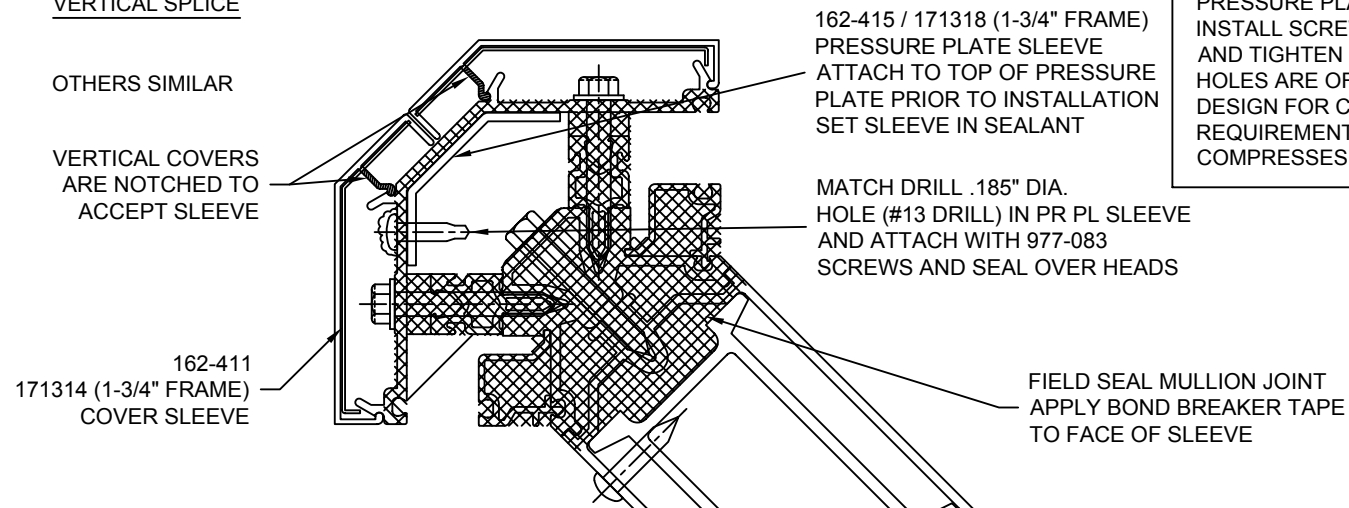
VERTICAL SPLICE

OTHERS SIMILAR

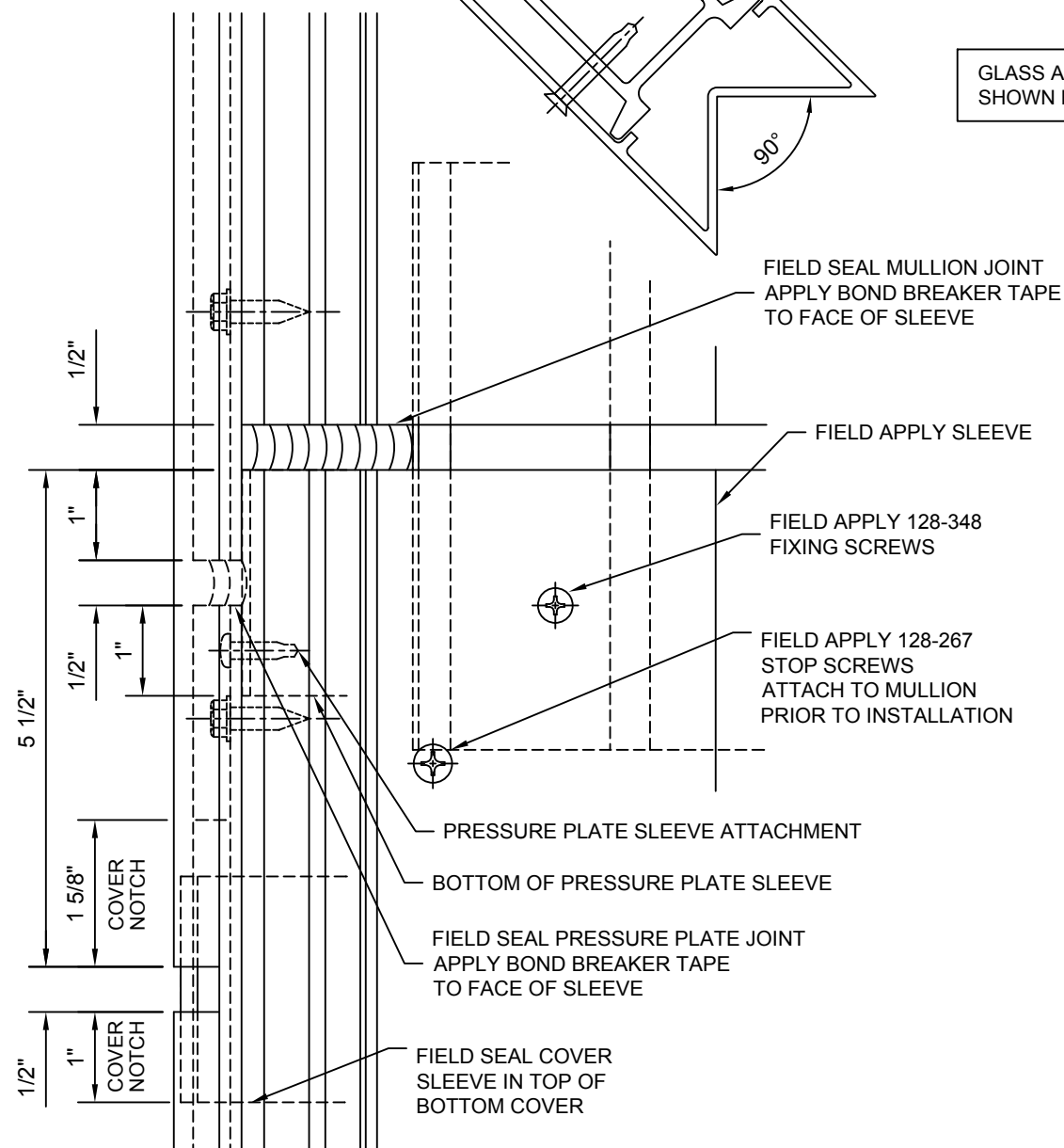
VERTICAL COVERS ARE NOTCHED TO ACCEPT SLEEVE

REFERENCE 171910 INSTALLATION INSTRUCTIONS FOR SEALANT APPLICATIONS.

NOTE:
WHEN APPLYING CORNER PRESSURE PLATES, PARTIALLY INSTALL SCREWS ON BOTH SIDES AND TIGHTEN DOWN TOGETHER. HOLES ARE OFF DUE TO GASKET DESIGN FOR COMPRESSION REQUIREMENTS. AS GASKET COMPRESSES, HOLES WILL ALIGN.



GLASS AND GASKETS NOT SHOWN FOR CLARITY



1600UT SYSTEM 1
CORNER
INSTRUCTIONS

Product Engineering & Development

95449-82
06/24/11

171918 (SHEET 03 OF 03)