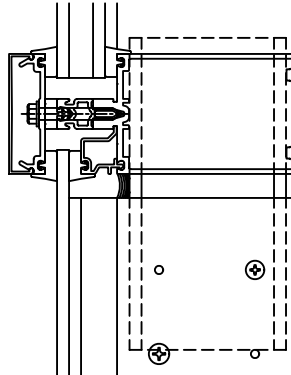



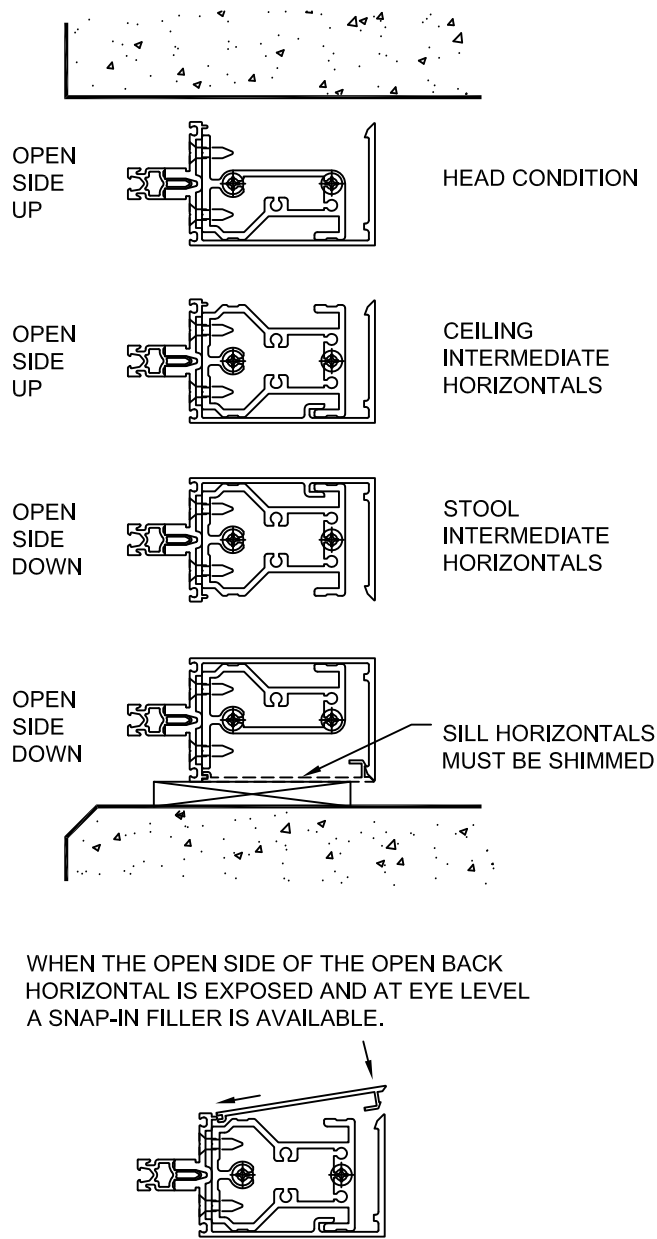
<div>GENERAL NOTES</div> <div>THESE INSTALLATION INSTRUCTIONS ARE A SUPPLEMENT TO THE APPROVED SHOP DRAWINGS. USE IN CONJUNCTION WITH THOSE DRAWINGS.</div> <div>1 - HANDLING, STORING AND PROTECTING ALUMINUM MATERIAL</div> <div>THE FOLLOWING PRECAUTIONS ARE RECOMMENDED TO ASSURE EARLY ACCEPTANCE OF YOUR PRODUCTS AND WORKMANSHIP.</div> <div>A - HANDLE CAREFULLY - DO NOT DROP FROM THE TRUCK. STACK WITH ADEQUATE SEPARATION SO MATERIAL WILL NOT RUB TOGETHER. STORE OFF THE GROUND. PROTECT AGAINST ELEMENTS AND OTHER CONSTRUCTION TRADES.</div> <div>B - KEEP MATERIAL AWAY FROM WATER, MUD AND SPRAY - PREVENT CEMENT, PLASTER AND OTHER MATERIALS FROM DAMAGING THE FINISH.</div> <div>C - PROTECT THE MATERIALS AFTER ERECTION, BY WRAPPING WITH KRAFT PAPER - OR BY ERECTING VISQUEEN/CANVAS SPLATTER SCREENS. CEMENT, PLASTER, TERRAZZO AND OTHER ALKALINE MATERIALS ARE VERY HARMFUL TO THE FINISH AND SHOULD BE REMOVED WITH WATER AND MILD SOAP BEFORE SETTING OCCURS. UNDER NO CIRCUMSTANCES ALLOW THESE MATERIALS TO TO DRY OR PERMANENT STAINING WILL OCCUR.</div> <div>2 - GENERAL RULES</div> <div>THE FOLLOWING PRACTICES ARE RECOMMENDED FOR ALL WALL INSTALLATIONS.</div> <div>A - READ COMPLETE INSTRUCTIONS BEFORE ORDERING GLASS OR FABRICATING MATERIAL.</div> <div>B - CHECK SHOP DRAWINGS TO BECOME THOROUGHLY FAMILIAR WITH THE JOB.</div> <div>C - ALL MATERIALS ARE TO BE INSTALLED PLUMB, LEVEL AND TRUE.</div> <div>D - ALL WORK SHOULD START FROM ESTABLISHED BENCH MARKS AND COLUMN CENTER LINES ESTABLISHED BY THE ARCHITECTURAL DRAWINGS AND THE GENERAL CONTRACTOR.</div> <div>E - THE SEQUENCE OF ERECTION SHOULD BE COORDINATED WITH THE JOB SUPERINTENDENT SO DELAYS ARE PREVENTED AND RISK OF MATERIAL DAMAGE IS MINIMIZED. IF PRESETTING OF ANCHORAGE IS REQUIRED, COORDINATE WITH GENERAL CONTRACTOR AND SUPERVISE LOCATION.</div> <div>F - MAKE CERTAIN CONSTRUCTION WHICH WILL RECEIVE YOUR MATERIALS IS ACCORDING TO THE CONTRACT DOCUMENTS. IF NOT, NOTIFY THE GENERAL CONTRACTOR IN WRITING AND RESOLVE DIFFERENCES BEFORE PROCEEDING WITH YOUR WORK.</div>		<div>G - INSULATE ALL ALUMINUM TO BE PLACED DIRECTLY IN CONTACT WITH THE MASONRY OR INCOMPATIBLE MATERIALS WITH A HEAVY COAT OF ZINC CHROMATE OR BITUMINOUS PAINT.</div> <div>H - FOLLOW KAWNEER INSTALLATION AND GLAZING INSTRUCTIONS.</div> <div>J - CHECK ALL MATERIAL ON ARRIVAL FOR QUANTITY.</div> <div>K - BE SURE TO HAVE ALL THE MATERIALS AND TOOLS NEEDED TO BEGIN THE INSTALLATION.</div> <div>1 - APPROVED SHOP DRAWINGS 2 - LEVEL AND PLUMB (TRANSIT) 3 - FASTENERS AND REQUIRED DRIVERS. 4 - PERIMETERS AND ACCESSORIES SUCH AS ANCHORS, FASTENERS, SLEEVES AND/OR SPLICE CAPS. 5 - SEALING MATERIALS. 6 - GLAZING MATERIALS.</div> <div>L - FOLLOW SEALANT MANUFACTURER'S RECOMMENDATIONS FOR PROPER SEALANT AND APPLICATION. ALL SEALANTS AND MASTICS MUST BE COMPATIBLE WITH ALL SURFACES INCLUDING OTHER SEALANT SURFACES. WHERE REQUIRED ALL SEALANTS MUST ADHERE TO ALL SURFACES INCLUDING OTHER SEALANT SURFACES.</div>		<div>1600UT SYSTEM² NOTES</div> <div>1600UT SYSTEM² IS AVAILABLE WITH 1" FRAMING MEMBERS WHICH ACCEPT BOTH 1" AND 1/4" INFILLS AND 1-3/4" FRAMING MEMBERS WHICH ACCEPT BOTH 1-3/4" AND 1" INFILLS. DETAILS IN THIS INSTALLATION MANUAL SHOWING 1" FRAMING WILL BE SIMILAR FOR 1-3/4" FRAMING UNLESS NOTED OTHERWISE.</div> <div>THE TERM "CAPTURED VERTICALS OR CAPTURED HORIZONTALS" WILL BE USED THROUGHOUT THESE INSTRUCTIONS. THIS MEANS FRAMING MEMBERS THAT ACCEPT AN EXTERIOR PRESSURE PLATE AND COVERS. "STRUCTURAL GLAZED VERTICALS" DO NOT ACCEPT EXTERIOR METAL.</div> <div>GLASS BITE IS 1/2" AT CAPTURED VERTICALS AND HORIZONTALS. GLASS BITE IS 1" AT STRUCTURAL GLAZED VERTICALS. GLASS SIZES MUST BE CALCULATED FROM APPROVED SHOP DRAWINGS.</div> <div>UNLESS OTHERWISE SPECIFIED, IT IS RECOMMENDED THAT SILICONE SEALANT BE USED FOR ALL INTERNAL SEALS.</div> <div>SEALANT MUST BE APPLIED PER THE SEALANT MANUFACTURER'S RECOMMENDATIONS AND PASS ALL ADHESION AND COMPATIBILITY TESTING.</div> <div>AT ALL JOINT SEALS, SEALANT MUST ADHERE TO METAL, GASKETS, THERMAL SEPARATOR AND JOINT PLUG MATERIALS.</div> <div>CLEAN ALL SURFACES PRIOR TO APPLICATION OF SEALANT AND PRIME WHERE NECESSARY TO ACHIEVE PROPER ADHESION.</div> <div>VERTICAL MULLION SPLICE - VERTICAL MULLIONS THAT ARE STRUCTURALLY GLAZED MUST BE SPLICED AT A HORIZONTAL. LOCATION OF THIS SPLICE MUST BE REVIEWED FOR STRUCTURAL INTEGRITY BY FACTORY ENGINEERING.</div> <div>SHIM ALL SILL HORIZONTALS AT SETTING BLOCK LOCATIONS.</div> <div><div>TYPICAL SPLICE LOCATION VISION OVER SPANDREL HORIZONTAL</div></div>		<div>171911 (SHEET 01 OF 12)</div> <div>CONFIDENTIAL AND PROPRIETARY INFORMATION KAWNEER COMPANY INC.</div> <div>THESE DRAWINGS ARE THE SOLE AND EXCLUSIVE PROPERTY OF KAWNEER AND CONTAIN SENSITIVE, PRIVILEGED OR CONFIDENTIAL INFORMATION WHICH MAY BE USED ONLY FOR ITS BENEFIT. THE DISCLOSURE OF THESE DRAWINGS TO UNAUTHORIZED PERSONS IS STRICTLY PROHIBITED. THIS DOCUMENT AND ALL COPIES MUST BE RETURNED UPON DEMAND. © COPYRIGHT KAWNEER COMPANY, INC., 2011</div> <div>STRUCTURAL SEAL NOTES</div> <div>STRUCTURAL SILICONE SEAL - THE GLAZING INSTALLER IS RESPONSIBLE FOR SELECTING AND CONTACTING THE SILICONE MANUFACTURER TO DETERMINE WHICH TYPE OF SILICONE IS TO BE USED AND WHAT SAMPLES ARE REQUIRED TO BE SUBMITTED FOR ADHESION AND COMPATIBILITY TESTING.</div> <div>THE SILICONE SEALANT SHALL NOT BE APPLIED TO KAWNEER PRODUCTS WITHOUT THE APPROVAL OF THE SILICONE MANUFACTURER AND UNTIL ALL REQUIRED TESTING IS COMPLETED AND DETAILED APPLICATION INSTRUCTIONS HAVE BEEN DELIVERED TO THE INSTALLER BY THE SILICONE MANUFACTURER.</div> <div>IF YOU FIND THE SILICONE MANUFACTURER'S INSTALLATION INSTRUCTIONS ARE NOT IN ACCORDANCE WITH KAWNEER'S INSTALLATION INSTRUCTIONS, IT IS YOUR RESPONSIBILITY TO NOTIFY KAWNEER OF THIS CONFLICT PRIOR TO GLAZING.</div> <div>YOUR GLASS SUPPLIER MUST BE MADE AWARE THAT THEIR GLASS WILL BE USED IN A SSG APPLICATION. THE APPLICATION MUST BE APPROVED BY THE GLASS SUPPLIER PRIOR TO GLAZING.</div> <div>ANY STRUCTURAL SILICONE GLAZED PRODUCT APPLICATION THAT IS NOT SHOWN IN KAWNEER'S STANDARD PRODUCT LITERATURE MUST BE PRE-APPROVED BY KAWNEER.</div> <div>EXTERIOR GLASS WEATHER SEAL - SEALANT TO BE A TYPE AS RECOMMENDED BY THE MANUFACTURER OF THE STRUCTURAL SEALANT BEING USED FOR THIS PROJECT. SEALANT MUST BE APPLIED PER THE SEALANT MANUFACTURER'S RECOMMENDATIONS. WEATHER SEAL SEALANT MUST ADHERE TO EXTERIOR GASKET MATERIAL.</div>	
<div></div> <div>Product Engineering & Development</div>		<div>1600UT SYSTEM 2 INSTALLATION INSTRUCTIONS</div>					
<div>95449-87 02/17/12</div>		<div>171911 (SHEET 01 OF 12)</div>					

OPEN BACK HORIZONTAL NOTES

THE OPEN BACK HORIZONTAL IS TO BE TYPICALLY USED FOR ALL HEAD/SILL AND LAST BAY INTERMEDIATE HORIZONTALS.

THE OPEN BACK HORIZONTAL CAN BE USED AT OTHER CONDITIONS IF IT IS AN ADVANTAGE TO THE JOB DESIGN.

THE SHEAR BLOCK AT ALL OPEN BACK INTERMEDIATE HORIZONTALS HAS THE OPTION TO BE PRE-INSTALLED INTO THE HORIZONTAL BEFORE HORIZONTALS ARE INSTALLED



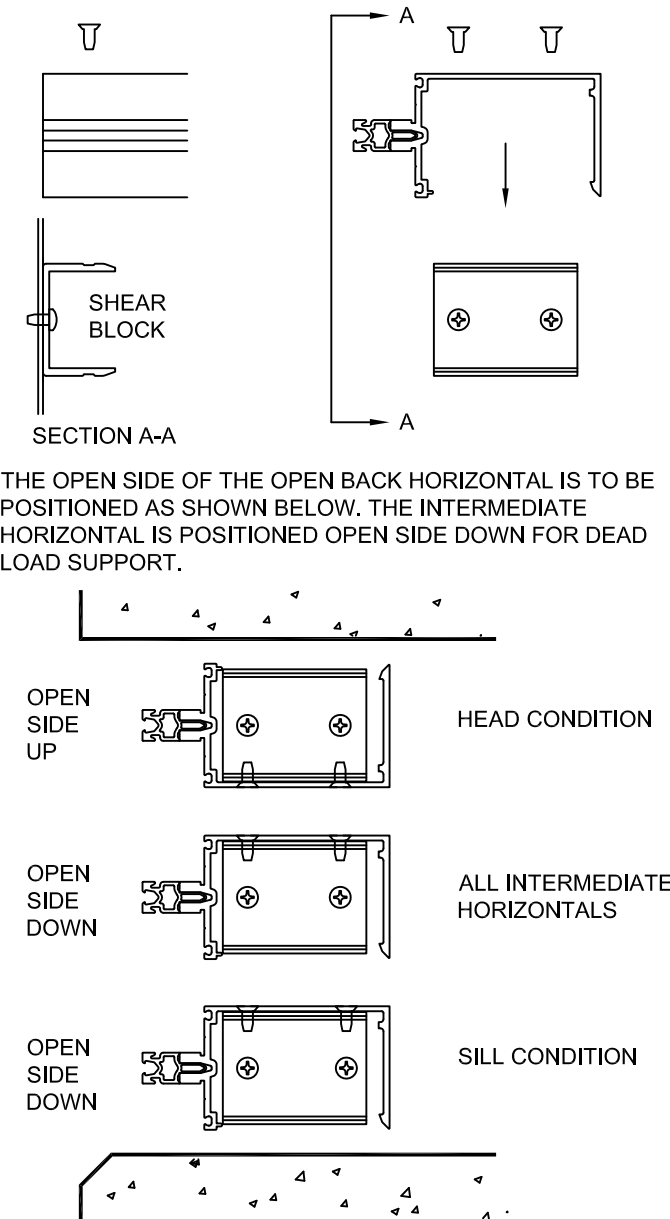
WHEN THE SNAP-IN FILLER IS NOT USED, AND DUE TO STANDARD COMMERCIAL EXTRUDING TOLERANCES, IT MAY BE REQUIRED TO USE A 4" PIECE OF THE FILLER AT EACH END OF A HORIZONTAL.

USE PART 162-316 FOR THE 6" & 6-3/4" DEEP SYSTEM
USE PART 162-317 FOR THE 7-1/2" & 8-1/4" DEEP SYSTEM

OPEN BACK HORIZONTALS AT 90° AND 135° CORNERS

WHENEVER POSSIBLE AVOID USING OPEN BACK HORIZONTALS AT 90° AND 135° CORNERS. IF USING THE OPEN BACK HORIZONTAL BECOMES ABSOLUTELY NECESSARY THE SHEAR BLOCK CONNECTION WILL BE AS SHOWN BELOW.

ALSO REFER TO CORNER INSTRUCTIONS 171909



STEP - 1 CHECK OPENINGS

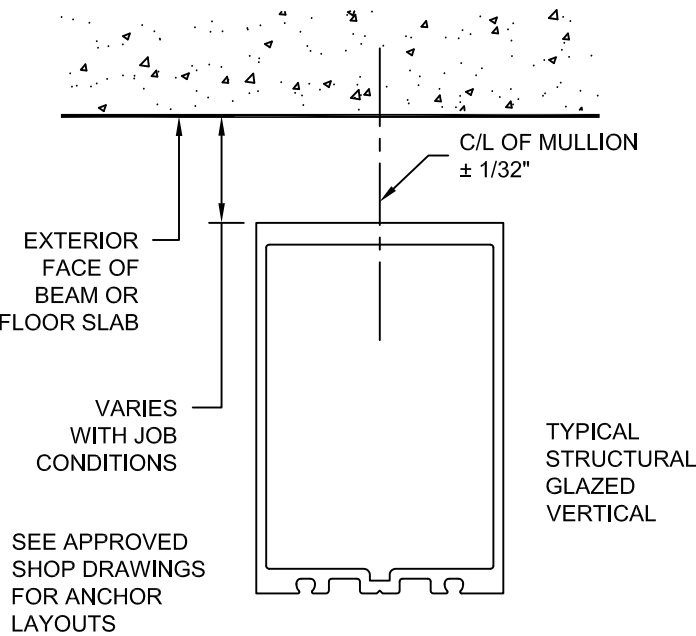
ELEVATIONS AND SLABS MUST BE WITHIN ADJUSTMENT OF ANCHORING SYSTEM. SEE APPROVED SHOP DRAWINGS FOR ALLOWABLE ADJUSTMENT.

ANCHORING SURFACES OF PERIMETER CONSTRUCTION MUST BE LEVEL AND PLUMB WITHIN THE ADJUSTMENT LIMITS OF THE HEAD, SILL AND JAMB. SEE APPROVED SHOP DRAWINGS FOR ALLOWABLE ADJUSTMENT.

STEP - 2 LAY OUT ANCHOR AND MULLION CENTERLINES

USE WALL LINES ESTABLISHED BY THE GENERAL CONTRACTOR. ON EACH FLOOR LAY OUT A REFERENCE LINE TO ESTABLISH IN AND OUT WALL LOCATIONS.

USE COLUMN CENTER LINES ESTABLISHED BY THE GENERAL CONTRACTOR. ON EACH FLOOR LAY OUT MULLION CENTER LINES AND ANCHOR CENTER LINES.



STEP - 3 INSTALL PRESET ANCHORS IF APPLICABLE

USING LOCATION LINES PREVIOUSLY ESTABLISHED INSTALL PRESET ANCHORS IN PLACE PER APPROVED SHOP DRAWINGS.

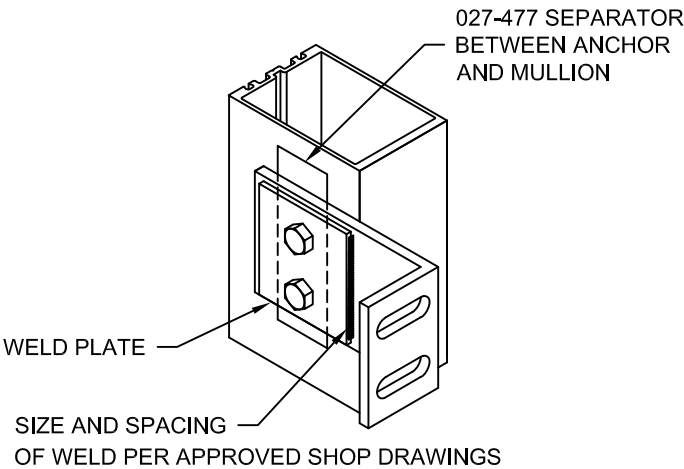
CONFIDENTIAL AND PROPRIETARY INFORMATION
KAWNEER COMPANY INC.

THESE DRAWINGS ARE THE SOLE AND EXCLUSIVE PROPERTY OF KAWNEER AND CONTAIN SENSITIVE, PRIVILEGED OR CONFIDENTIAL INFORMATION WHICH MAY BE USED ONLY FOR ITS BENEFIT. THE DISCLOSURE OF THESE DRAWINGS TO UNAUTHORIZED PERSONS IS STRICTLY PROHIBITED. THIS DOCUMENT AND ALL COPIES MUST BE RETURNED UPON DEMAND.
© COPYRIGHT KAWNEER COMPANY, INC., 2011

STEP - 4 FRAME ASSEMBLY

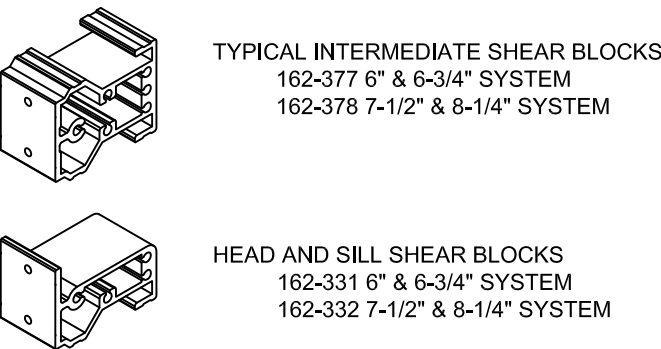
ATTACH ANCHORS TO MULLIONS WHERE APPLICABLE. ANCHOR PREP MAY BE FABRICATED IN THE FIELD OR FACTORY. CONSULT APPROVED SHOP DRAWINGS FOR CORRECT METHOD. STANDARD ANCHOR PREP IS THRU-BOLTED AT INTERMEDIATE VERTICALS AND TAPPING PLATES ARE USED AT JAMB VERTICALS. REFER TO APPROVED SHOP DRAWINGS FOR CORRECT METHOD.

WHEN WELDING ANCHORS, PROTECT INSTALLED GLASS AND METAL FROM WELD SPLATTER.



DO NOT OVER TIGHTEN ANCHOR CONNECTIONS. TIGHTEN TO A "SNUG TIGHT" POSITION WITH PARTS BROUGHT INTO GOOD CONTACT. BE SURE ANY SPRING TYPE LOCK WASHERS ARE COMPRESSED. THEN TIGHTEN APPROXIMATELY 1/2 MORE TURN.

ATTACH SHEAR BLOCKS



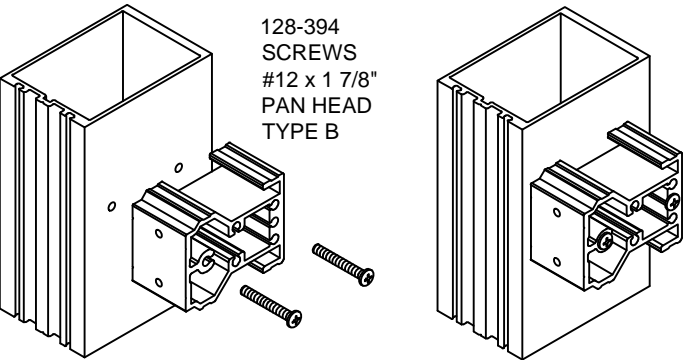
1600UT SYSTEM 2
INSTALLATION
INSTRUCTIONS

Product Engineering & Development

95449-094
04/26/13

STEP - 4 FRAME ASSEMBLY

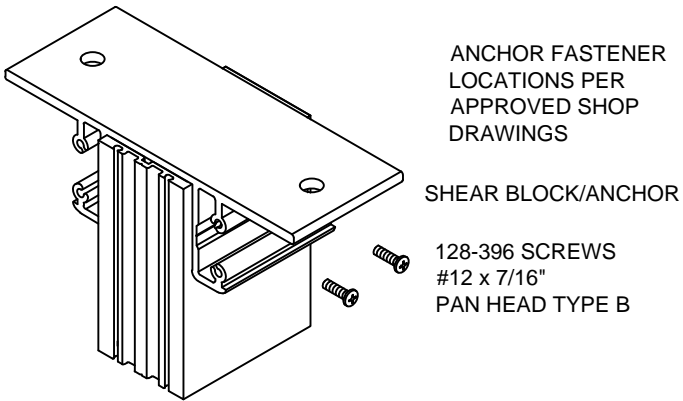
ATTACH SHEAR BLOCKS



HEAD/SILL SHEAR BLOCK/ANCHOR WHERE APPLICABLE AND SHOWN BELOW.

162-314 6" & 6-3/4" SYSTEM AT JAMBS
162-315 7-1/2" & 8-1/4" SYSTEM AT JAMBS
162-342 6" & 6-3/4" SYSTEM AT MULLIONS
162-343 7-1/2" & 8-1/4" SYSTEM AT MULLIONS

STRUCTURAL INTEGRITY OF ANCHOR AND FASTENERS MUST BE CHECKED BY FACTORY ENGINEERING.



ANCHOR FASTENER LOCATIONS PER APPROVED SHOP DRAWINGS

SHEAR BLOCK/ANCHOR

128-396 SCREWS
#12 x 7/16"
PAN HEAD TYPE B

STEP - 5 INSTALL 162-310 THERMAL BREAK

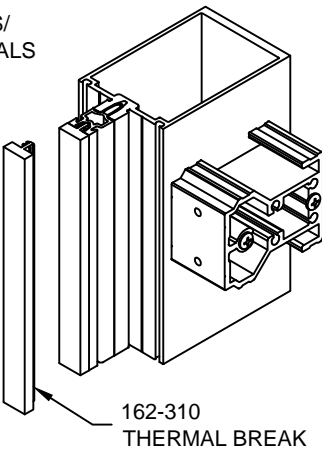


162-310

CAPTURED VERTICALS/HORIZONTALS

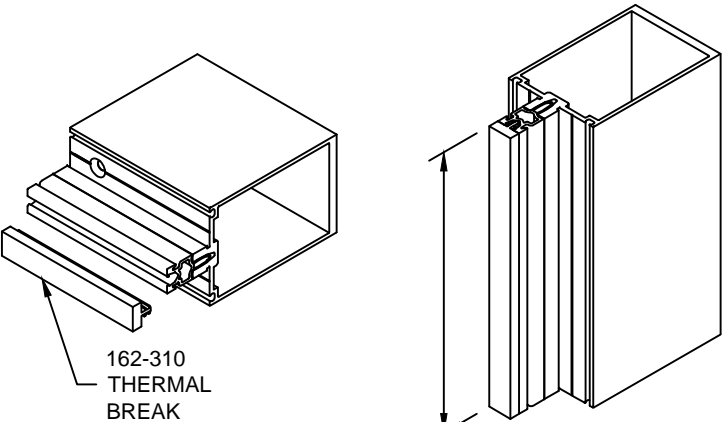
DO NOT STRETCH WHEN REMOVING FROM COIL AND CARTON

DO NOT STRETCH DURING INSTALLATION



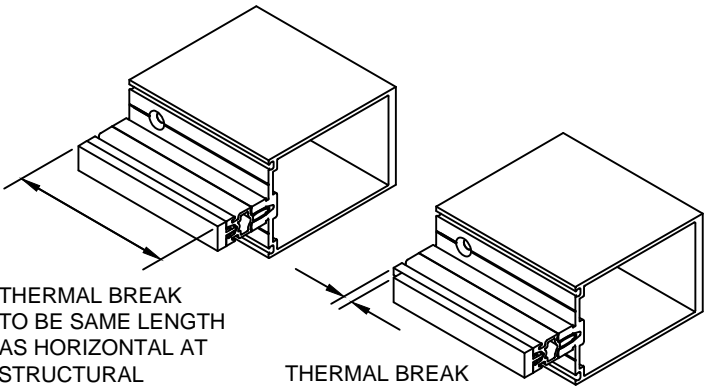
162-310 THERMAL BREAK

STEP - 5 INSTALL 162-310 THERMAL BREAK



OPTION TO INSTALL THERMAL BREAK AFTER VERTICALS AND HORIZONTALS ARE INSTALLED

THERMAL BREAK TO BE SAME LENGTH AS VERTICAL MULLIONS

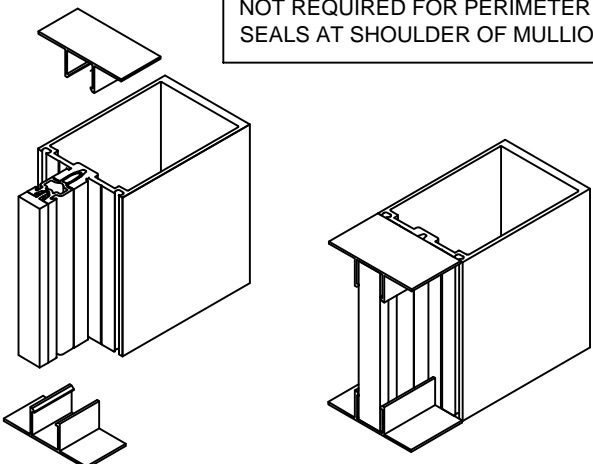


THERMAL BREAK TO BE SAME LENGTH AS HORIZONTAL AT STRUCTURAL GLAZED VERTICALS

THERMAL BREAK TO BE 1/4" SHORT AT EACH END OF HORIZONTAL AT CAPTURED VERTICALS

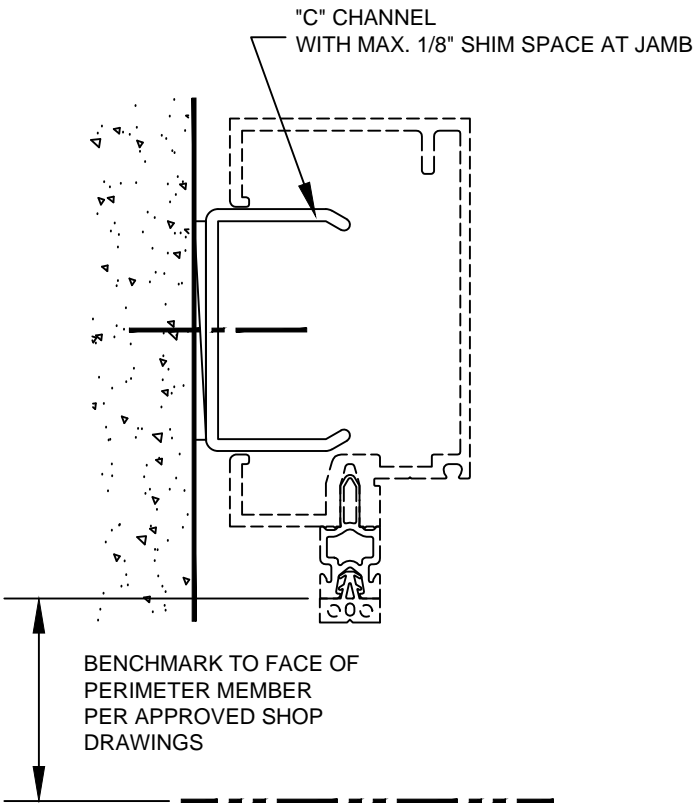
INSTALL HEAD AND SILL END CAPS WHERE APPLICABLE
171309 1" FRAMING
171308 1-3/4" FRAMING
SET IN SEALANT

NOT REQUIRED FOR PERIMETER SEALS AT SHOULDER OF MULLION



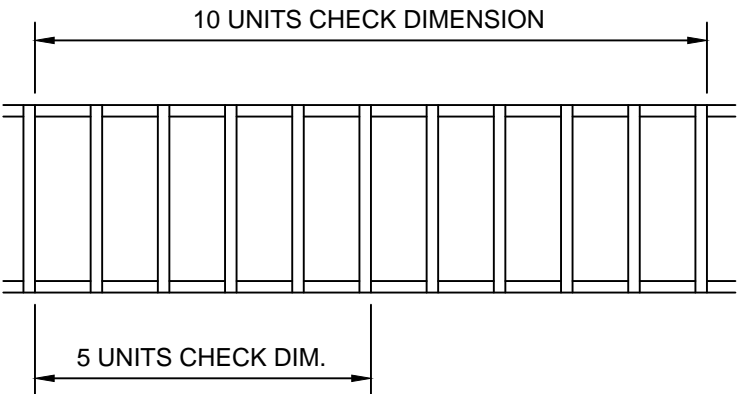
STEP - 6 PERIMETERS WHERE APPLICABLE

INSTALL "C" CHANNEL AT JAMBS PER APPROVED SHOP DRAWINGS.



STEP - 7 INSTALL VERTICAL MULLIONS

DIMENSION BUILD-UP CHECK
CHECK OVERALL FRAME DIMENSIONS ABOUT EVERY FIVE MULLIONS ON LONG RUNS.
THIS IS TO AVOID DIMENSIONAL BUILD-UP.



THESE DRAWINGS ARE THE SOLE AND EXCLUSIVE PROPERTY OF KAWNEER AND CONTAIN SENSITIVE, PRIVILEGED OR CONFIDENTIAL INFORMATION WHICH MAY BE USED ONLY FOR ITS BENEFIT. THE DISCLOSURE OF THESE DRAWINGS TO UNAUTHORIZED PERSONS IS STRICTLY PROHIBITED. THIS DOCUMENT AND ALL COPIES MUST BE RETURNED UPON DEMAND.
© COPYRIGHT KAWNEER COMPANY, INC., 2011

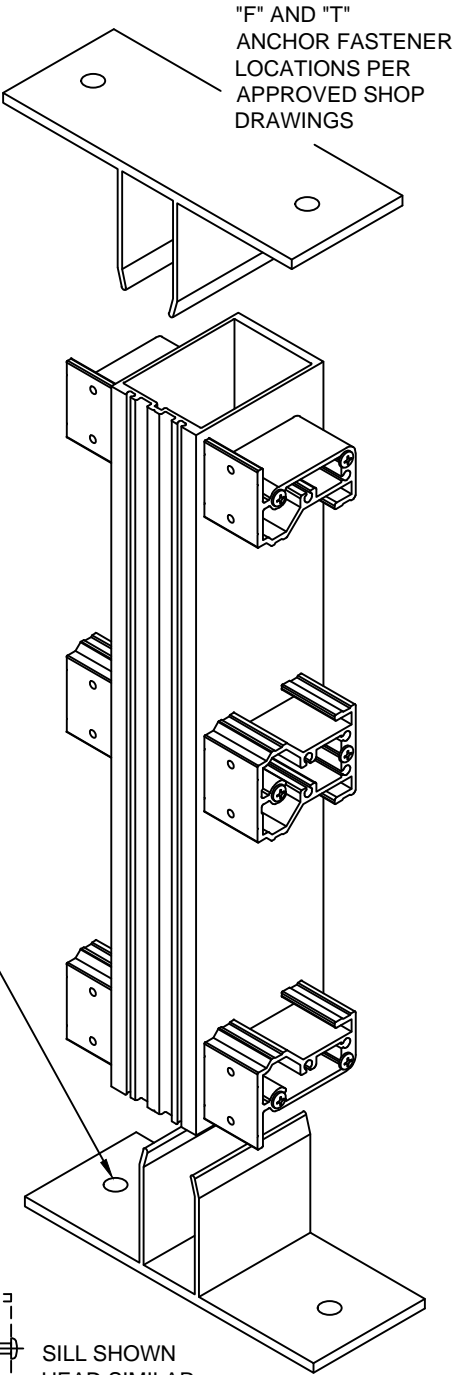
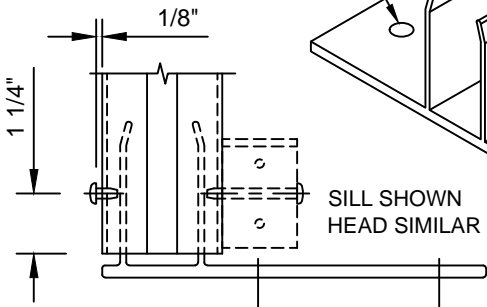
STRUCTURAL GLAZED VERTICALS
DETAILS SIMILAR FOR CAPTURED VERTICALS

"F" OR "T" ANCHORS WHERE APPLICABLE

HEAD/SILL SHEAR BLOCKS MAY NEED TO BE REMOVED TO INSTALL A ANCHOR FASTENER THAT MIGHT BE LOCATED CLOSE TO THE MULLION

"F" & "T" ANCHOR FASTENER LOCATIONS PER APPROVED SHOP DRAWINGS

AT MULLION JAMB SIDE, APPLY (2) 128-396 SCREWS AS SHOWN TO CENTER F-CLIPS AS REQUIRED.



KAWNEER

Product Engineering & Development

95449-094
04/26/12

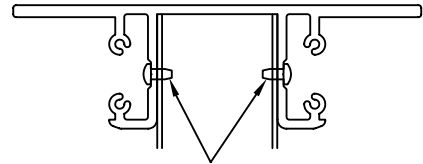
1600UT SYSTEM 2
INSTALLATION
INSTRUCTIONS

STEP - 7 INSTALL VERTICAL MULLIONS

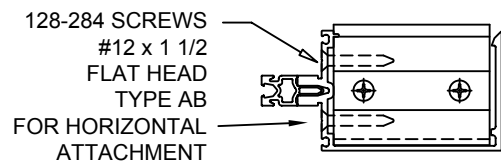
STRUCTURAL GLAZED VERTICALS
DETAILS SIMILAR FOR CAPTURED VERTICALS

HEAD/SILL SHEAR BLOCK/ANCHOR WHERE APPLICABLE.

162-314 6" & 6-3/4" SYSTEM AT JAMBS
162-315 7-1/2" & 8-1/4" SYSTEM AT JAMBS
162-342 6" & 6-3/4" SYSTEM AT MULLIONS
162-343 7-1/2" & 8-1/4" SYSTEM AT MULLIONS

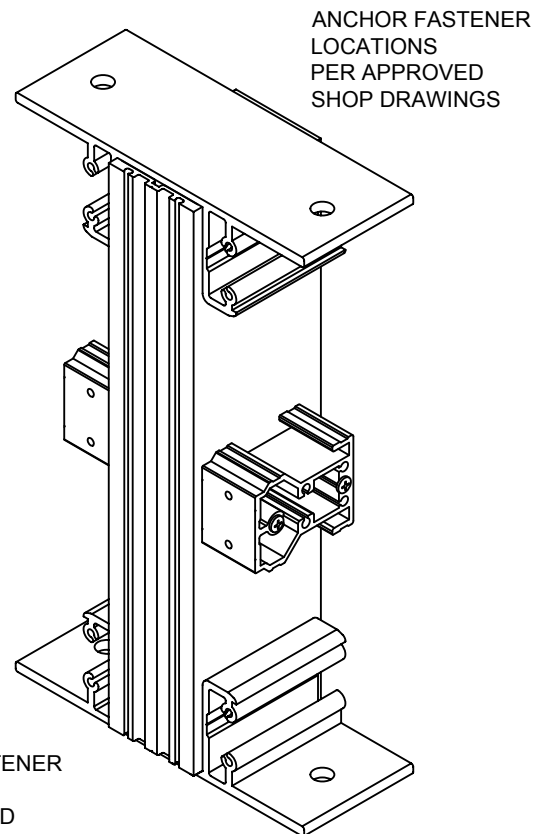


128-396 SCREWS
#12 x 7/16"
PAN HEAD TYPE B



THE ABOVE SCREWS ARE ONLY USED AT THE
OPTIONAL SHEAR BLOCK/ANCHORS.

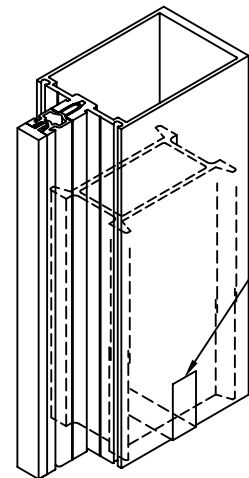
STRUCTURAL SHIMMING IS REQUIRED AT
SILL TO ACCOMPLISH DESIGNED
PERIMETER SEAL WIDTH.



ANCHOR FASTENER
LOCATIONS
PER APPROVED
SHOP DRAWINGS

STEP - 7 INSTALL VERTICAL MULLIONS

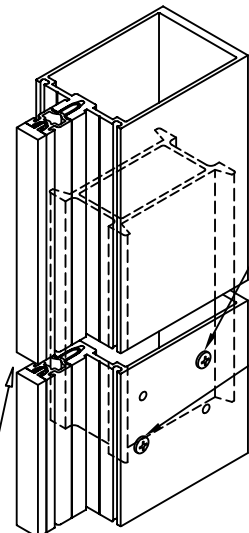
CAPTURED VERTICALS



VERTICAL SPLICE
JOINTS WHERE
APPLICABLE.

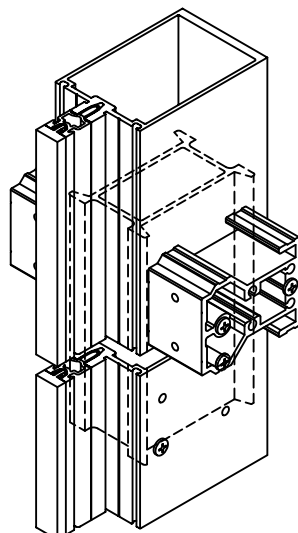
SLEEVE IS FACTORY
TAPED ONTO THE
BOTTOM OF THE
TOP VERTICAL

REMOVE THE TAPE
AND LET THE SLEEVE
SLIDE DOWN TO THE
FACTORY APPLIED
STOP SCREW



FIELD APPLIED
FIXING SCREW
128-348
#10 x 1 1/4"
FLAT HEAD
SELF DRILLING
SHOP APPLIED
STOP SCREW
128-267 #12 x 1"
PAN HEAD
TYPE AB

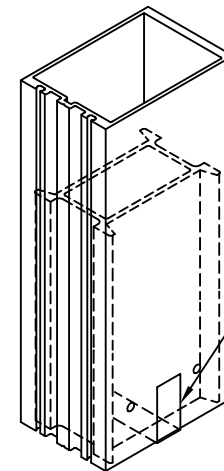
USE TEMPORARY
SPACERS FOR
JOINT DIMENSION



SPLICE JOINT
WHEN IT OCCURS
AT A HORIZONTAL.

STEP - 7 INSTALL VERTICAL MULLIONS

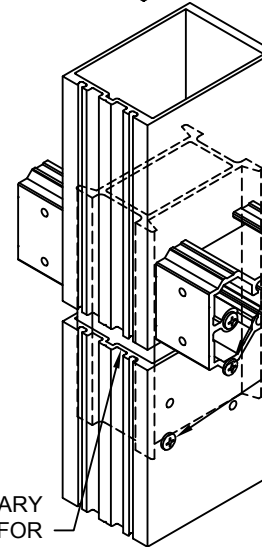
STRUCTURAL GLAZED VERTICALS



VERTICAL SPLICE
JOINTS WHERE
APPLICABLE.

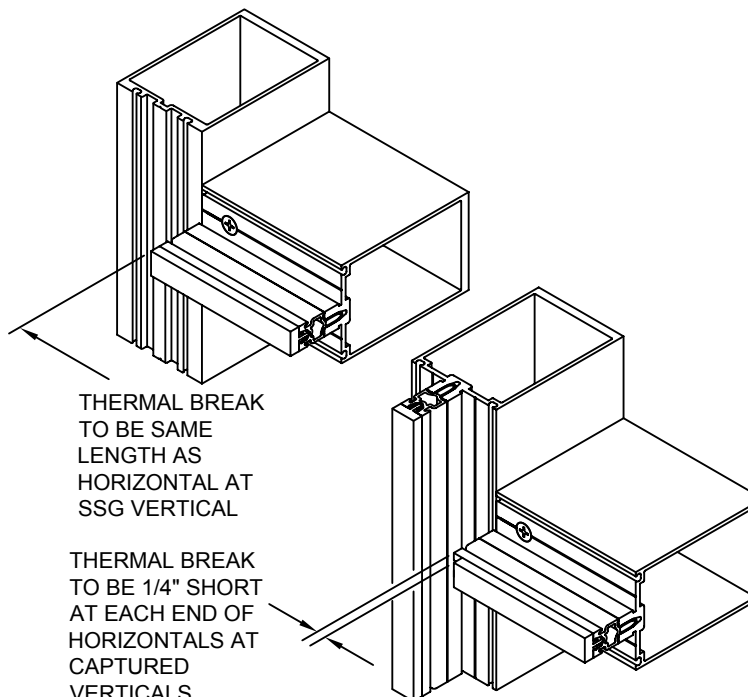
SLEEVE IS FACTORY
TAPED ONTO THE
BOTTOM OF THE
TOP VERTICAL

REMOVE THE TAPE
AND LET THE SLEEVE
SLIDE DOWN TO THE
FACTORY APPLIED
STOP SCREW



FIELD APPLIED
FIXING SCREW
128-348
#10 x 1 1/4"
FLAT HEAD
SELF DRILLING
SHOP APPLIED
STOP SCREW
128-267 #12 x 1"
PAN HEAD
TYPE AB

USE TEMPORARY
SPACERS FOR
JOINT DIMENSION



THERMAL BREAK
TO BE SAME
LENGTH AS
HORIZONTAL AT
SSG VERTICAL

THERMAL BREAK
TO BE 1/4" SHORT
AT EACH END OF
HORIZONTALS AT
CAPTURED
VERTICALS

171911 (SHEET 04 OF 12)

CONFIDENTIAL AND PROPRIETARY INFORMATION
KAWNEER COMPANY INC.

THESE DRAWINGS ARE THE SOLE AND EXCLUSIVE PROPERTY OF KAWNEER AND CONTAIN SENSITIVE, PRIVILEGED OR CONFIDENTIAL INFORMATION WHICH MAY BE USED ONLY FOR ITS BENEFIT. THE DISCLOSURE OF THESE DRAWINGS TO UNAUTHORIZED PERSONS IS STRICTLY PROHIBITED. THIS DOCUMENT AND ALL COPIES MUST BE RETURNED UPON DEMAND.
© COPYRIGHT KAWNEER COMPANY, INC., 2011

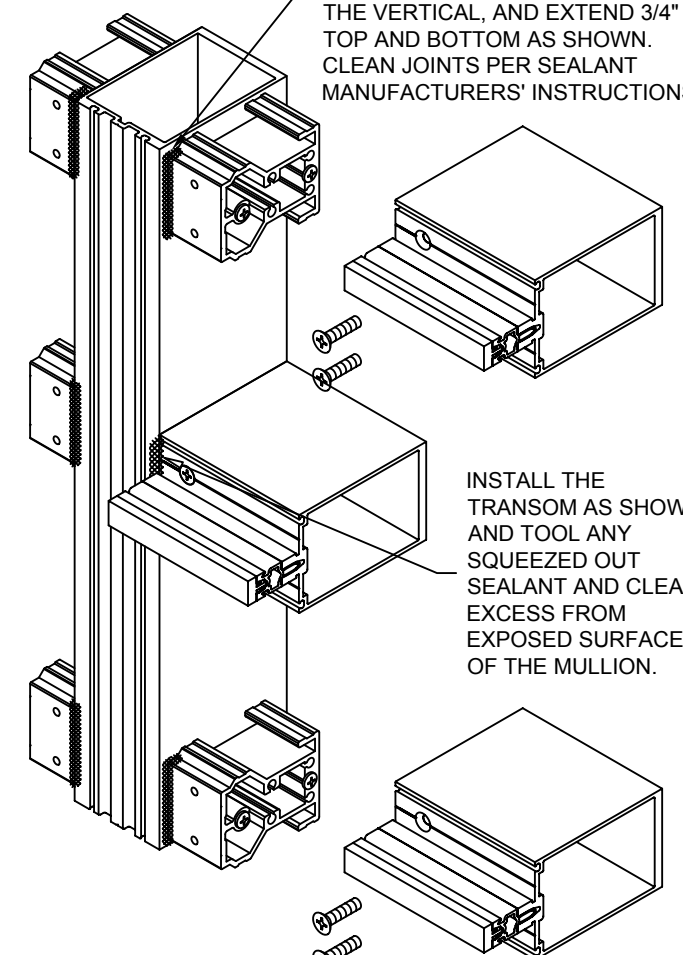
STEP - 8 INSTALL HEAD/SILL AND INTERMEDIATE HORIZONTALS

STRUCTURAL GLAZED VERTICALS

DETAILS SIMILAR FOR CAPTURED VERTICALS EXCEPT
HORIZONTAL THERMAL BREAK CUT 1/4" SHORT EACH END.

TUBULAR HORIZONTALS

JUST BEFORE ASSEMBLING THE
HORIZONTAL APPLY A GENEROUS
BEAD OF SEALANT BETWEEN THE
FRONT FACE OF SHEAR BLOCK AND
THE VERTICAL, AND EXTEND 3/4"
TOP AND BOTTOM AS SHOWN.
CLEAN JOINTS PER SEALANT
MANUFACTURERS' INSTRUCTIONS.



INSTALL THE
TRANSOM AS SHOWN
AND TOOL ANY
SQUEEZED OUT
SEALANT AND CLEAN
EXCESS FROM
EXPOSED SURFACES
OF THE MULLION.

128-405 SCREWS
#12 X 7/8"
FLAT HEAD
TYPE AB

KAWNEER

Product Engineering & Development

95449-8G
01/21/11

1600UT SYSTEM 2
INSTALLATION
INSTRUCTIONS

171911 (SHEET 04 OF 12)

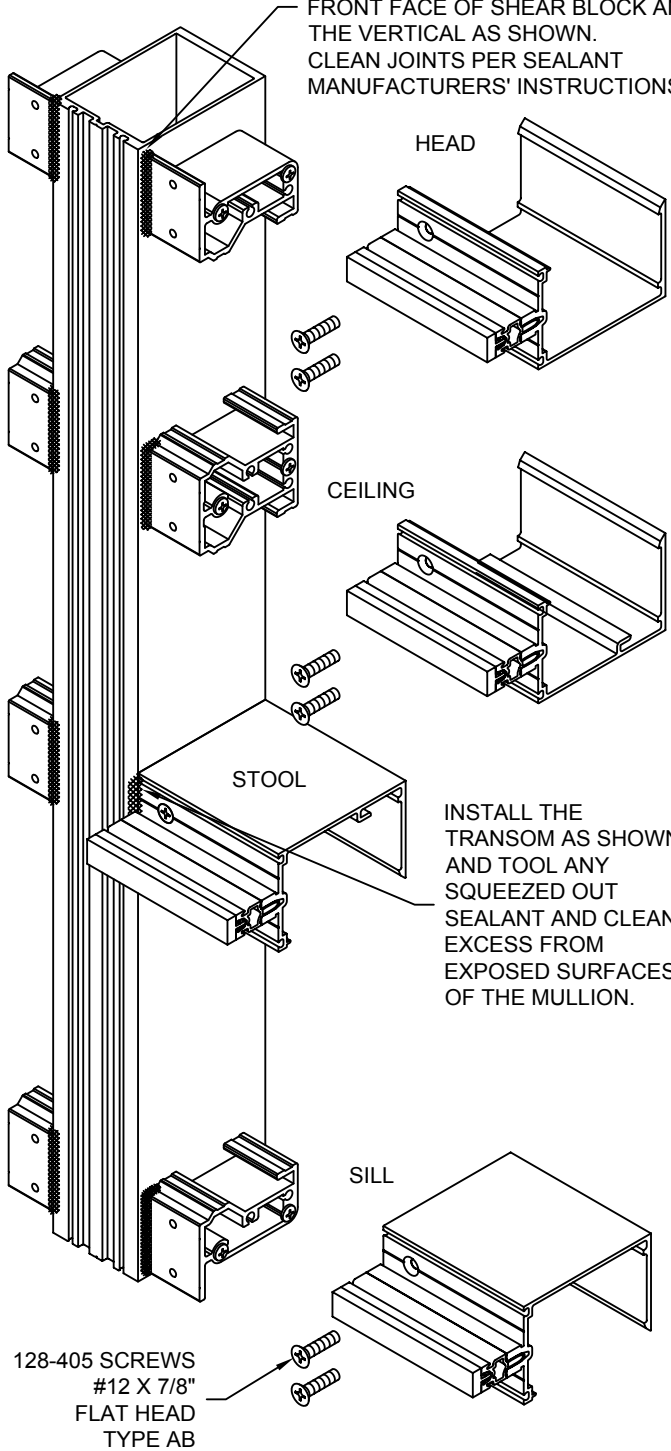
STEP - 8 INSTALL HEAD/SILL
AND INTERMEDIATE
HORIZONTALS

STRUCTURAL GLAZED VERTICALS

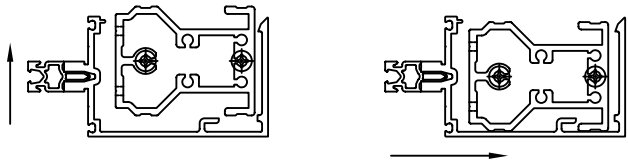
DETAILS SIMILAR FOR CAPTURED VERTICALS EXCEPT
HORIZONTAL THERMAL BREAK CUT 1/4" SHORT EACH END.

OPEN BACK HORIZONTALS AND LAST BAY HORIZONTALS
FILLER AVAILABLE WHEN OPEN BACK IS EXPOSED
AND AT EYE LEVEL.

JUST BEFORE ASSEMBLING THE
HORIZONTAL APPLY A GENEROUS
BEAD OF SEALANT BETWEEN THE
FRONT FACE OF SHEAR BLOCK AND
THE VERTICAL AS SHOWN.
CLEAN JOINTS PER SEALANT
MANUFACTURERS' INSTRUCTIONS.



INSTALLING CEILING INTERMEDIATE
OPEN BACK HORIZONTAL



INSTALLING STOOL INTERMEDIATE
OPEN BACK HORIZONTAL

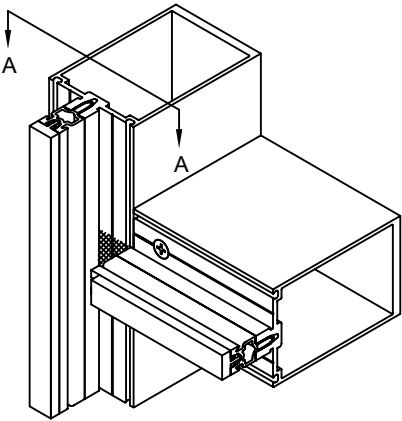
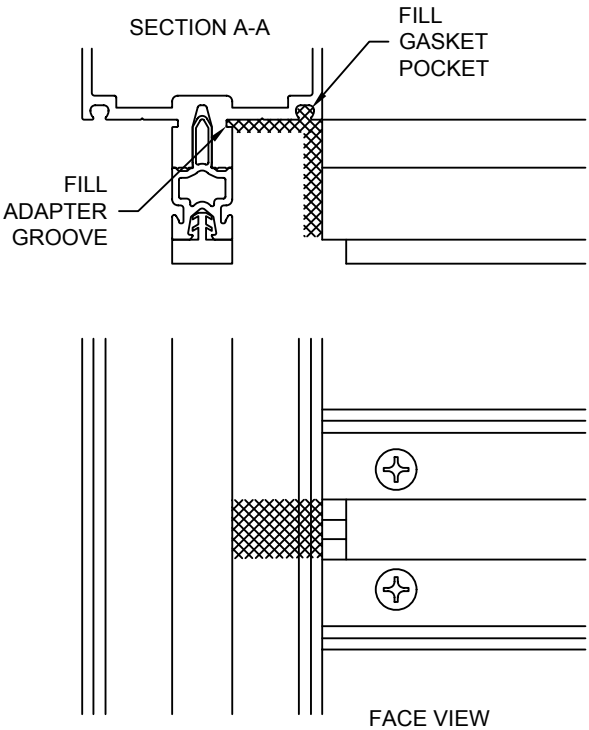


STEP - 9 INSTALL JOINT PLUGS

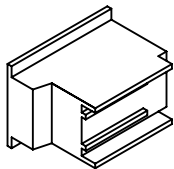
CAPTURED VERTICALS

ALL SURFACES AND GROOVES MUST BE
CLEANED PER THE SEALANT MANUFACTURER'S
RECOMMENDATIONS.

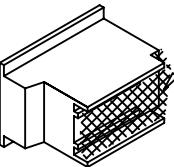
JUST BEFORE INSTALLING JOINT PLUGS APPLY
SEALANT AS SHOWN FILLING GASKET POCKET
AND ADAPTER GROOVE. ENSURE THAT THE
MULLION TONGUE RACEWAY AND THERMAL
SEPARATOR IS SEALED AND COMPLETELY
FILLED AT PLUG LOCATION.



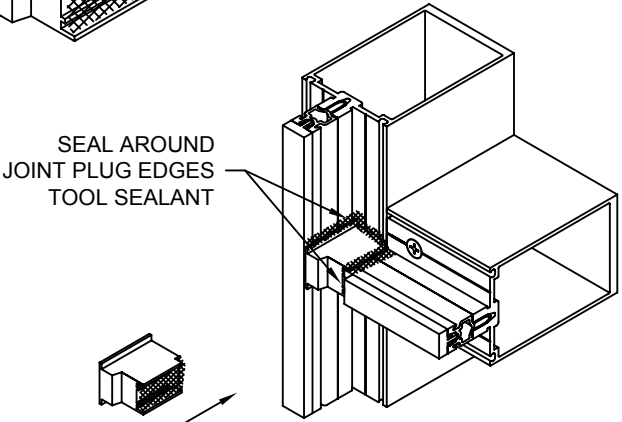
JOINT PLUG
162-321 1" FRAME
171307 1-3/4" FRAME



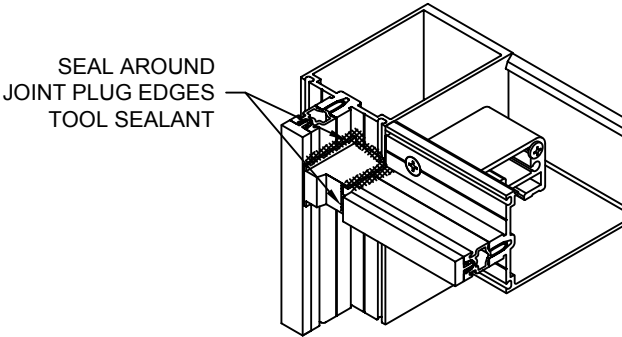
APPLY SEALANT TO
THIS FACE OF JOINT PLUG



SEAL AROUND
JOINT PLUG EDGES
TOOL SEALANT



SEAL AROUND
JOINT PLUG EDGES
TOOL SEALANT

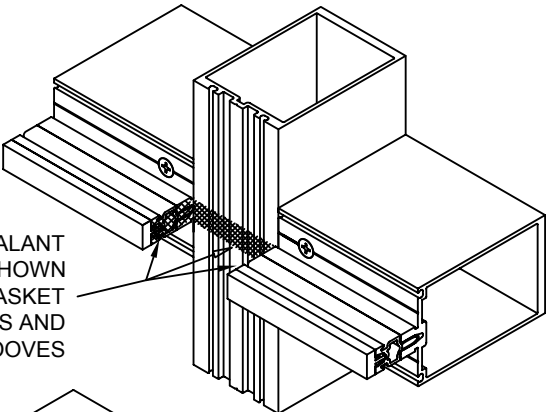


THESE DRAWINGS ARE THE SOLE AND EXCLUSIVE PROPERTY OF KAWNEER AND CONTAIN
SENSITIVE, PRIVILEGED OR CONFIDENTIAL INFORMATION WHICH MAY BE USED ONLY FOR ITS
BENEFIT. THE DISCLOSURE OF THESE DRAWINGS TO UNAUTHORIZED PERSONS IS STRICTLY
PROHIBITED. THIS DOCUMENT AND ALL COPIES MUST BE RETURNED UPON DEMAND.
© COPYRIGHT KAWNEER COMPANY, INC., 2011

STEP - 9 INSTALL JOINT PLUGS

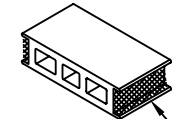
STRUCTURAL GLAZED VERTICALS

APPLY SEALANT
AS SHOWN
FILLING GASKET
POCKETS AND
VERTICAL GROOVES

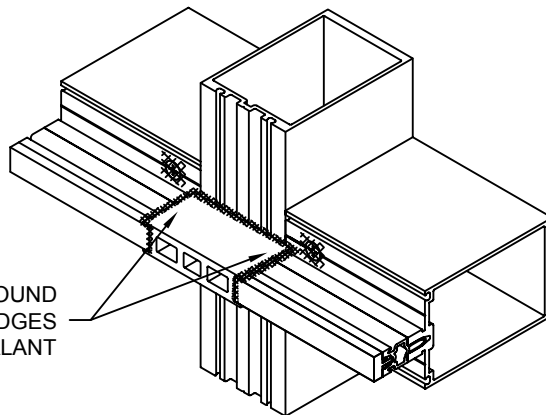


JOINT PLUG
162-324 1" FRAME
171311 1-3/4" FRAME

APPLY SEALANT TO
BOTH SIDES OF PLUG

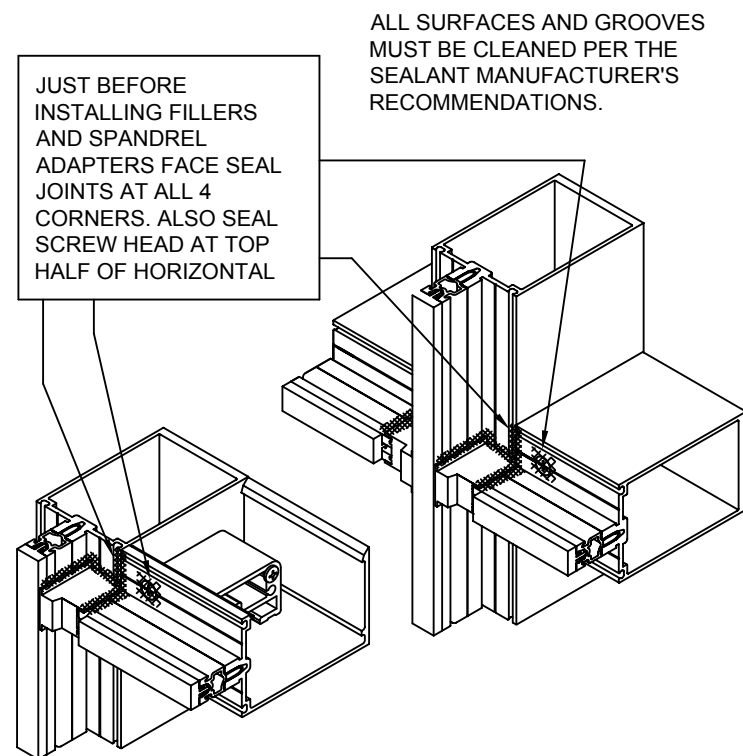


SEAL AROUND
JOINT PLUG EDGES
TOOL SEALANT

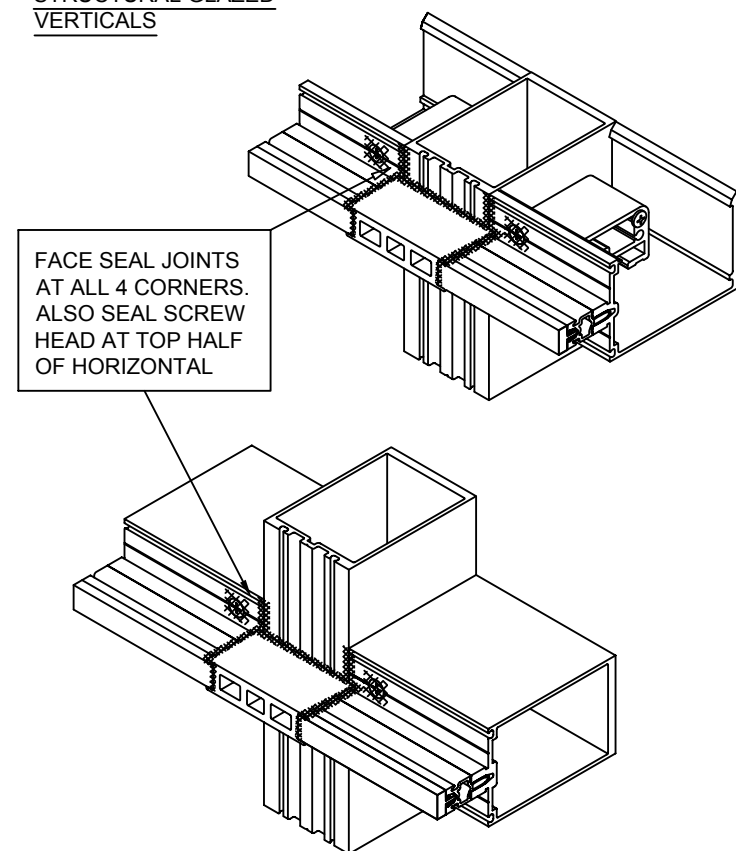


STEP - 10 INSTALL SPANDREL ADAPTERS WHERE APPLICABLE

CAPTURED VERTICALS

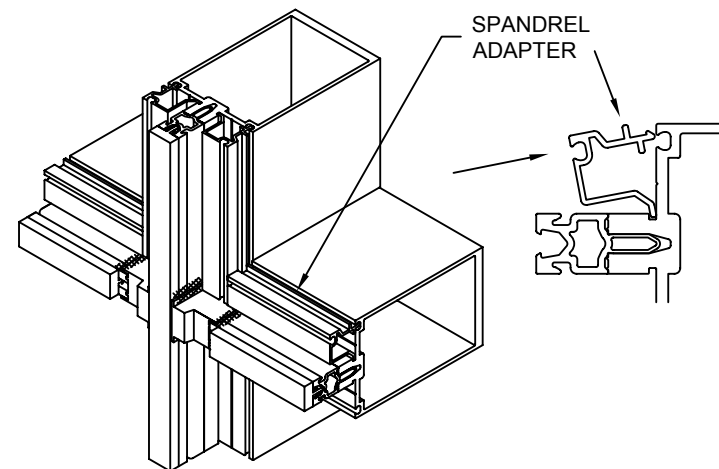


STRUCTURAL GLAZED VERTICALS



STEP - 10 INSTALL SPANDREL ADAPTERS WHERE APPLICABLE

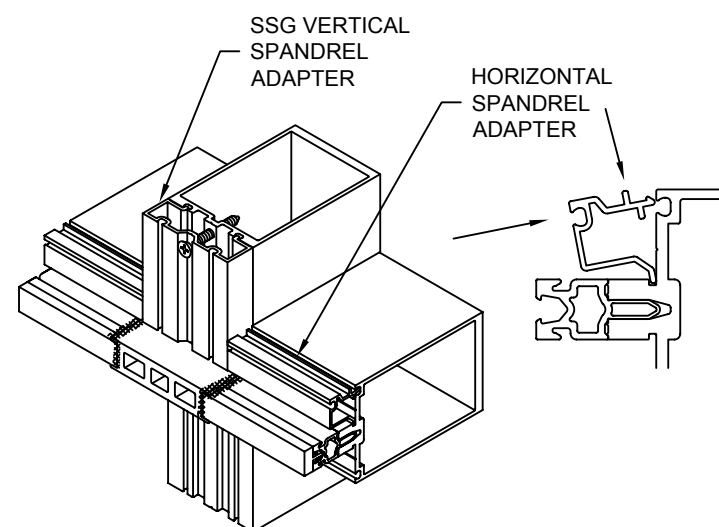
CAPTURED VERTICALS



STRUCTURAL GLAZED VERTICALS

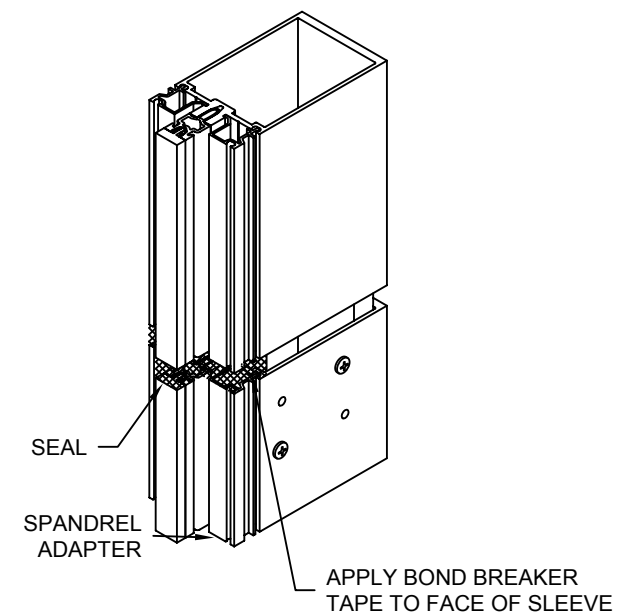
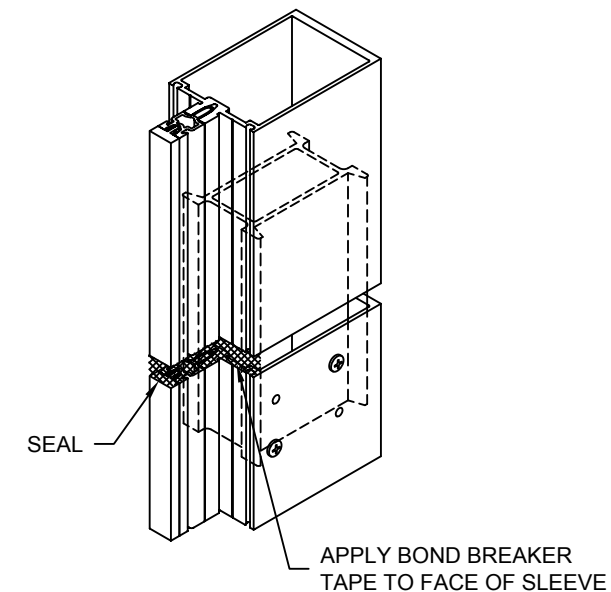
INSTALL VERTICAL ADAPTER WITH 128-348 SCREWS, #10 X 1-1/4" FLAT HEAD SELF DRILLING SCREW. LOCATE A MAXIMUM 6" AND A MINIMUM 4" FROM EACH END AND 9" ON CENTER.

AT STEEL REINFORCING USE 128-401 #10 X 1" FLAT HEAD TYPE B SCREW. DRILL 0.154 DIA. (#23 DRILL) INTO MULLION USING ADAPTER HOLES AS A PILOT.



STEP - 11 SEAL INTERIOR OF VERTICAL SPLICE JOINTS

CAPTURED VERTICALS



171911 (SHEET 06 OF 12)

CONFIDENTIAL AND PROPRIETARY INFORMATION
KAWNEER COMPANY INC.

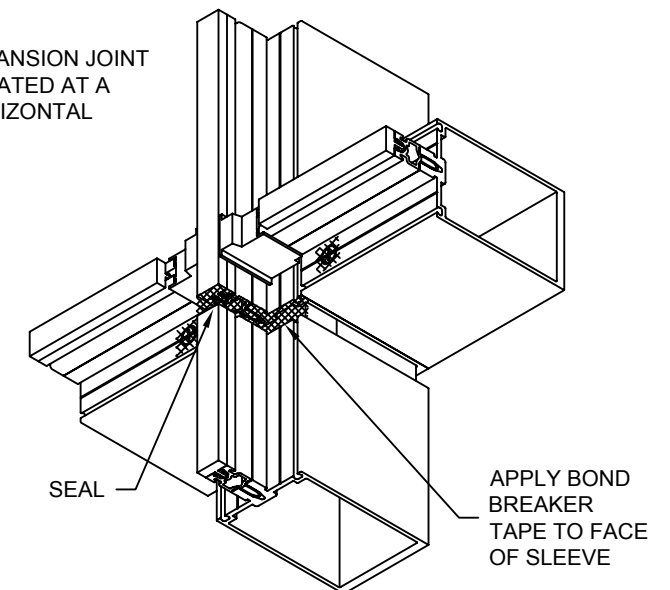
THESE DRAWINGS ARE THE SOLE AND EXCLUSIVE PROPERTY OF KAWNEER AND CONTAIN SENSITIVE, PRIVILEGED OR CONFIDENTIAL INFORMATION WHICH MAY BE USED ONLY FOR ITS BENEFIT. THE DISCLOSURE OF THESE DRAWINGS TO UNAUTHORIZED PERSONS IS STRICTLY PROHIBITED. THIS DOCUMENT AND ALL COPIES MUST BE RETURNED UPON DEMAND.
© COPYRIGHT KAWNEER COMPANY, INC., 2011

STEP - 11 SEAL INTERIOR OF VERTICAL SPLICE JOINTS

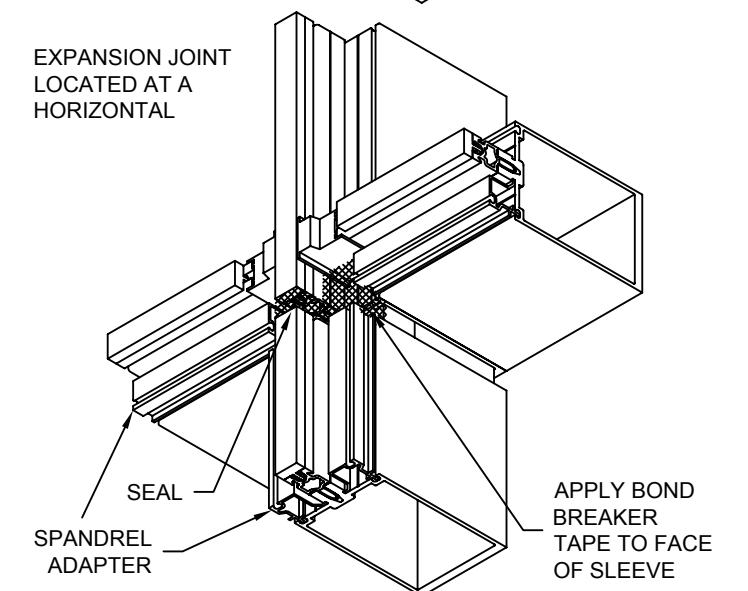
CAPTURED VERTICALS

ALL SURFACES AND GROOVES MUST BE CLEANED PER THE SEALANT MANUFACTURER'S RECOMMENDATIONS.

EXPANSION JOINT LOCATED AT A HORIZONTAL



EXPANSION JOINT LOCATED AT A HORIZONTAL



KAWNEER

1600UT SYSTEM 2
INSTALLATION
INSTRUCTIONS

Product Engineering & Development

95449-8G
01/21/11

171911 (SHEET 06 OF 12)

STEP - 12 INSTALL INTERIOR GLAZING GASKETS

GASKETS SHOULD BE INSTALLED JUST PRIOR TO GLASS TO AVOID CONTAMINATION BY JOB SITE DEBRIS. GASKET GROOVES AND POCKETS SHOULD BE CLEAN.

IN TEMPERATURES COLDER THAN 50° F ARRANGEMENTS SHOULD BE MADE TO WARM GASKETS BEFORE INSTALLATION. THIS WILL PREVENT EXCESSIVE GLAZING PRESSURE ON THE GLASS DUE TO COLD, STIFF RUBBER GASKETS.

GASKETS CAN BECOME DEFORMED DURING STORAGE IN CARTONS. THEY SHOULD BE REMOVED FROM CARTONS SEVERAL HOURS PRIOR TO GLAZING AND LAID FLAT OR HUNG TO ALLOW RECOVERY OF CORRECT SHAPE. TEMPERATURES SHOULD BE AT LEAST 50° F TO ALLOW THIS.

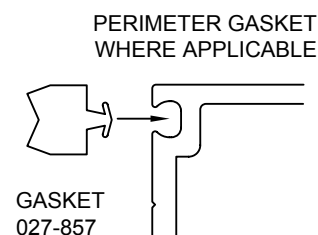
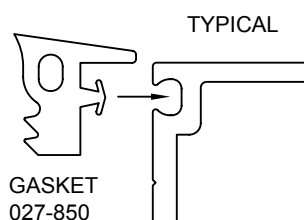
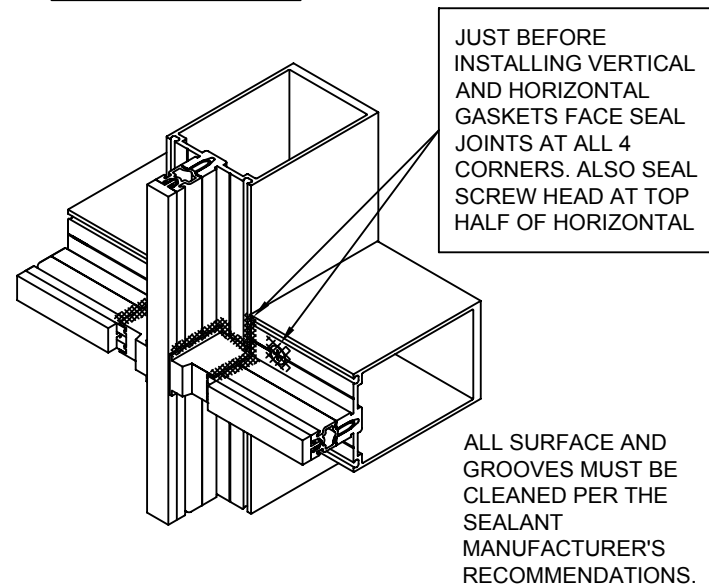
GASKET INSTALLED LENGTH TO BE DAYLITE OPENING. GASKET LENGTH AT STRUCTURAL GLAZED VERTICALS TO BE DAYLITE OPENING PLUS 1-3/8".

GASKETS TO BE CUT LONG FOR SOME "CROWD-IN". GASKETS SHOULD NEVER BE "STRETCHED TO FIT".

"CROWD-IN" TO BE:

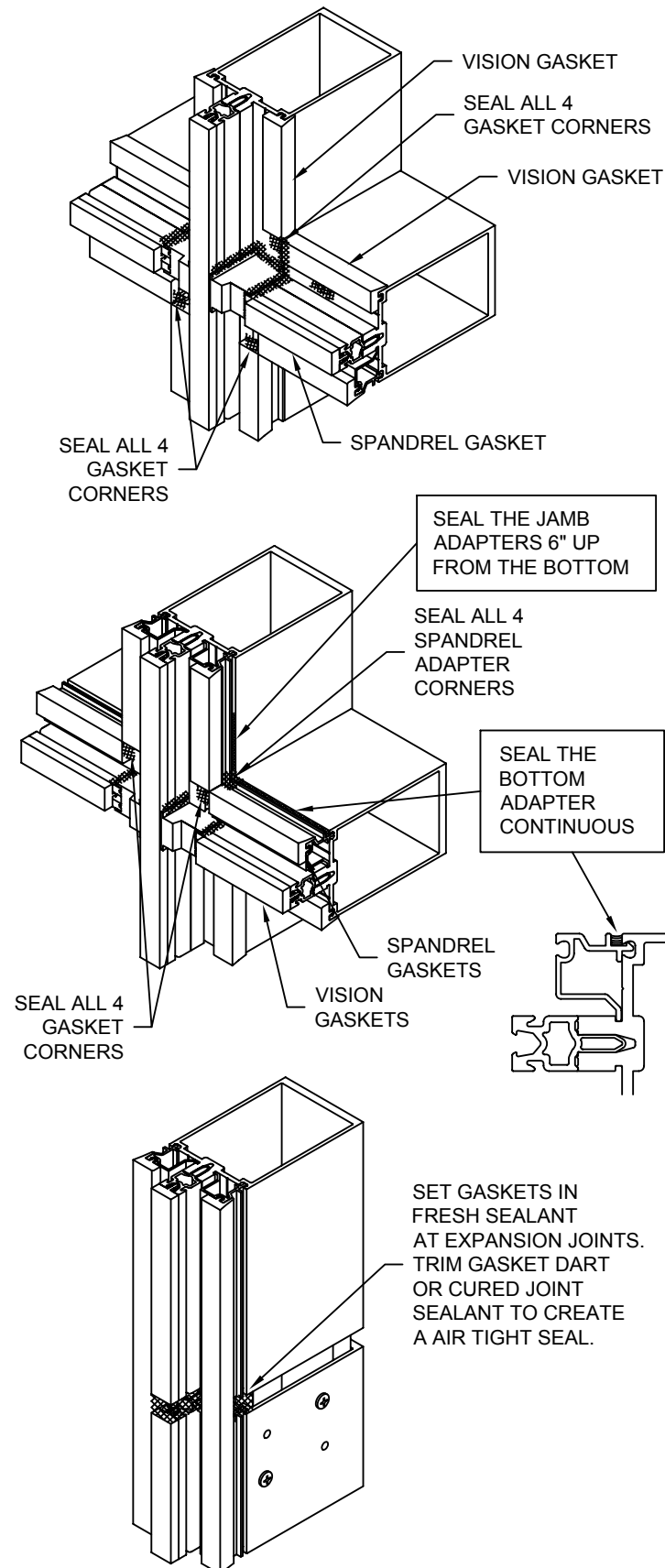
1/8" PER FOOT UP TO 5'-0"
3/16" PER FOOT UP TO 8'-0"
1/4" PER FOOT OVER 8'-0"

CAPTURED VERTICALS



STEP - 12 INSTALL INTERIOR GLAZING GASKETS

CAPTURED VERTICALS

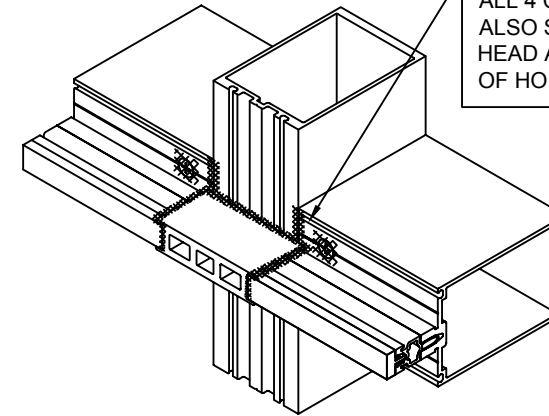


STEP - 12 INSTALL INTERIOR GLAZING GASKETS

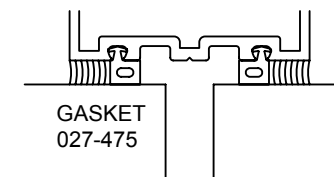
STRUCTURAL GLAZED VERTICALS

ALL SURFACES AND GROOVES MUST BE CLEANED PER THE SEALANT MANUFACTURER'S RECOMMENDATIONS.

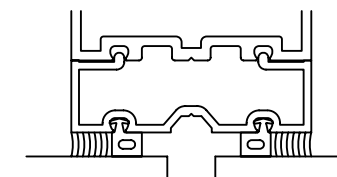
JUST BEFORE INSTALLING VERTICAL AND HORIZONTAL GASKETS. FACE SEAL JOINTS AT ALL 4 CORNERS. ALSO SEAL SCREW HEAD AT TOP HALF OF HORIZONTAL



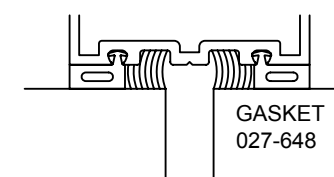
VERTICAL GASKETS TO RUN DAYLIGHT OPENING PLUS 1 3/8"



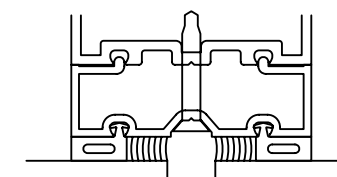
VISION AT INTERIOR STRUCTURAL SEAL



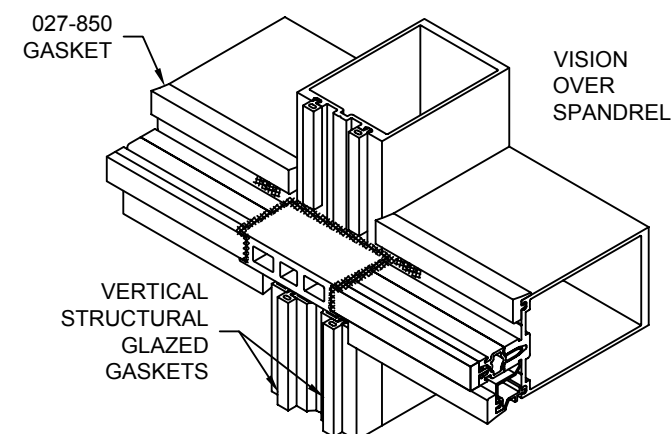
SPANDREL AT INTERIOR STRUCTURAL SEAL



VISION AT EXTERIOR STRUCTURAL SEAL



SPANDREL AT EXTERIOR STRUCTURAL SEAL



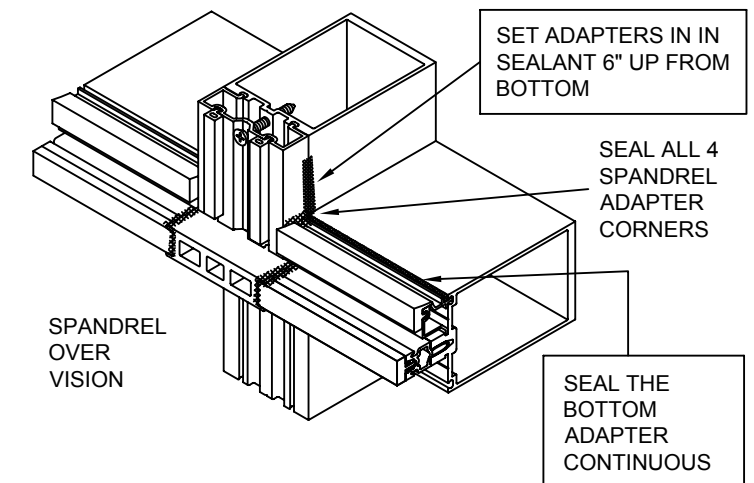
171911 (SHEET 07 OF 12)

CONFIDENTIAL AND PROPRIETARY INFORMATION
KAWNEER COMPANY INC.

THESE DRAWINGS ARE THE SOLE AND EXCLUSIVE PROPERTY OF KAWNEER AND CONTAIN SENSITIVE, PRIVILEGED OR CONFIDENTIAL INFORMATION WHICH MAY BE USED ONLY FOR ITS BENEFIT. THE DISCLOSURE OF THESE DRAWINGS TO UNAUTHORIZED PERSONS IS STRICTLY PROHIBITED. THIS DOCUMENT AND ALL COPIES MUST BE RETURNED UPON DEMAND.
© COPYRIGHT KAWNEER COMPANY, INC., 2011

STEP - 12 INSTALL INTERIOR GLAZING GASKETS

STRUCTURAL GLAZED VERTICALS

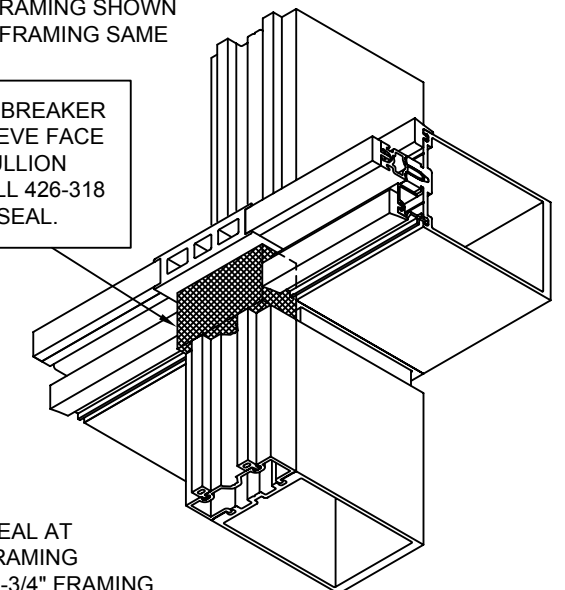


STEP - 13 INSTALL INTERIOR SPONGE AIR SEALS

1/4" INFILL /1" FRAMING SHOWN
1" INFILL/1-3/4" FRAMING SAME

APPLY BOND BREAKER TAPE TO SLEEVE FACE AND SEAL MULLION JOINT. INSTALL 426-318 SPONGE AIR SEAL.

USE 426-319 SPONGE AIR SEAL AT 1" INFILLS/1" FRAMING
1-3/4" INFILLS/1-3/4" FRAMING



KAWNEER

Product Engineering & Development

95449-8G
01/21/11

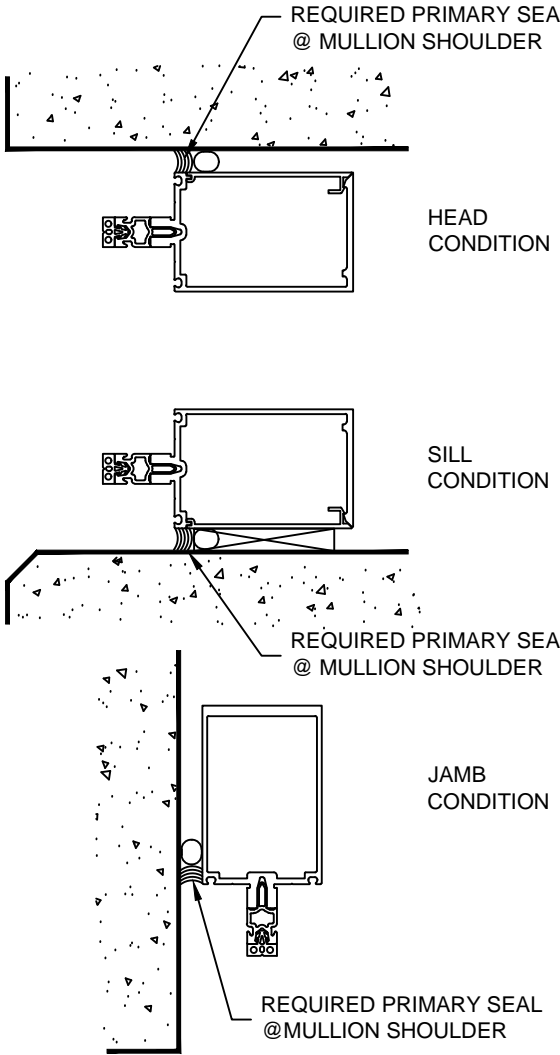
1600UT SYSTEM 2
INSTALLATION
INSTRUCTIONS

171911 (SHEET 07 OF 12)

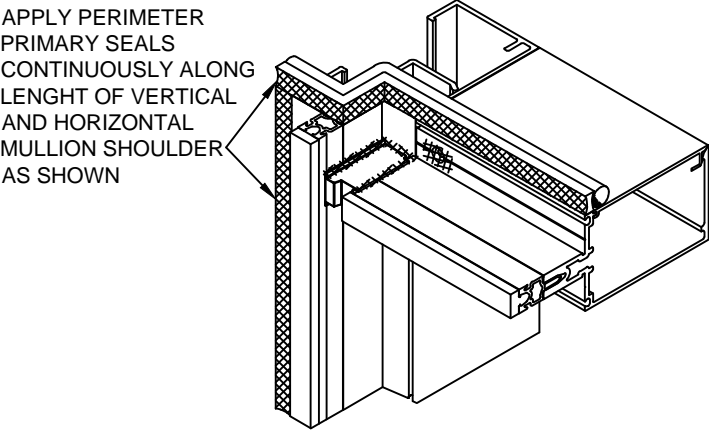
STEP - 14 INSTALL PERIMETER SEAL
AT MULLION SHOULDER

PERIMETER PRIMARY SEALS ARE REQUIRED TO BE
INSTALLED AT THE MULLION SHOULDER. PERIMETER
SEALS AT THE MULLION SHOULDER MUST BE APPLIED
BEFORE PRESSURE PLATES ARE INSTALLED.

INSTALL SUITABLY SIZED BACKER ROD AND APPLY
GENEROUS, CONTINUOUS BEAD OF SEALANT AS SHOWN.



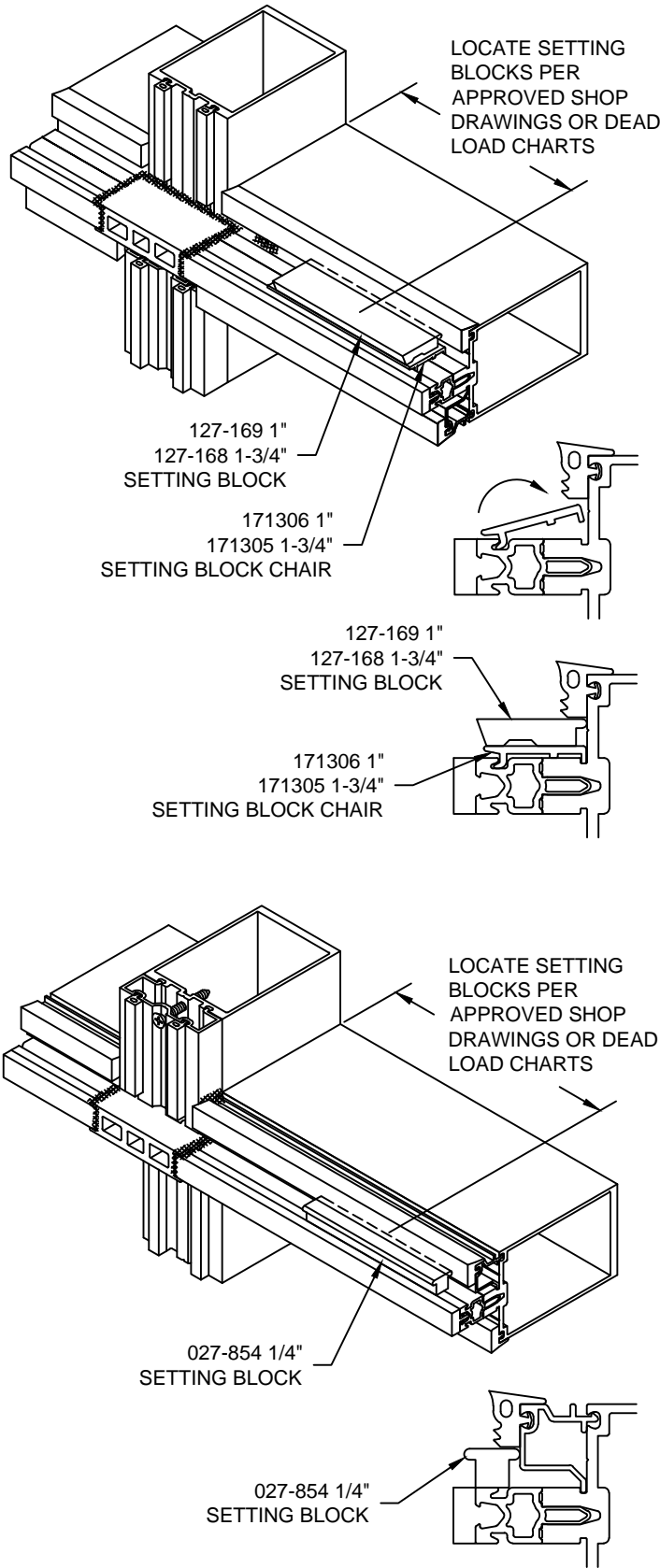
INSTALL PERIMETER SEAL FOR VERTICAL PERIMETER APPLICATION



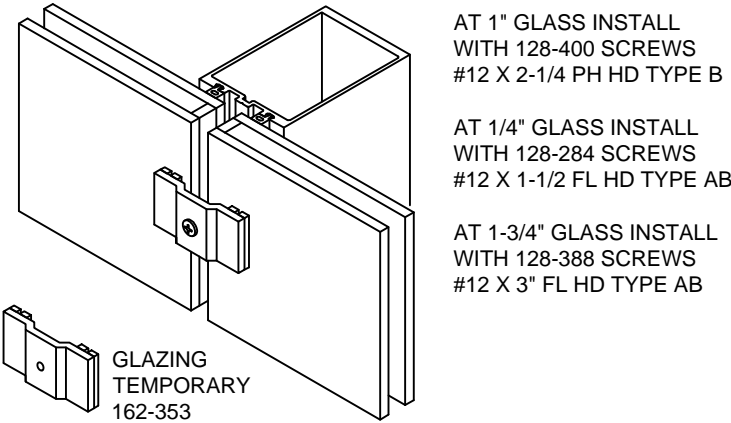
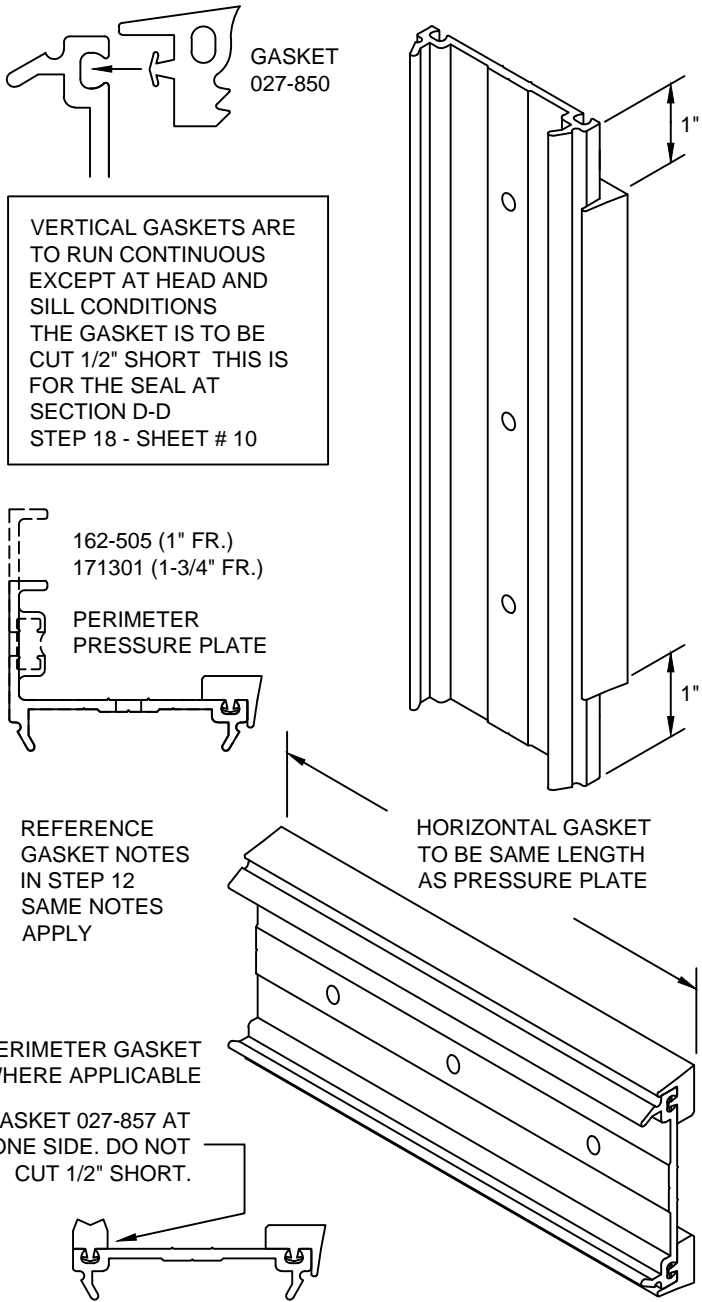
STEP - 15 INSTALL SETTING BLOCKS

STRUCTURAL GLAZED VERTICALS

CAPTURED VERTICAL DETAILS SIMILAR



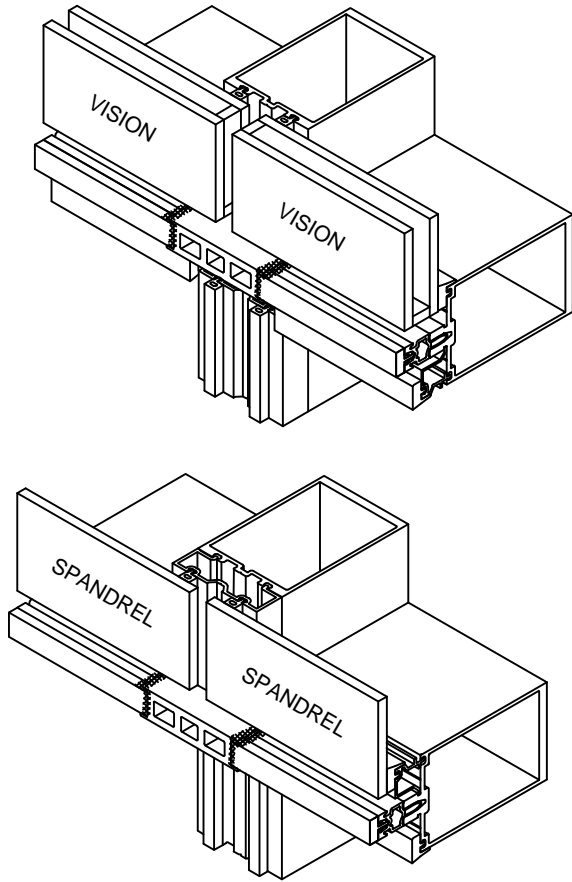
STEP - 16 INSTALL EXTERIOR GASKETS
INTO PRESSURE PLATES



THESE DRAWINGS ARE THE SOLE AND EXCLUSIVE PROPERTY OF KAWNEER AND CONTAIN
SENSITIVE, PRIVILEGED OR CONFIDENTIAL INFORMATION WHICH MAY BE USED ONLY FOR ITS
BENEFIT. THE DISCLOSURE OF THESE DRAWINGS TO UNAUTHORIZED PERSONS IS STRICTLY
PROHIBITED. THIS DOCUMENT AND ALL COPIES MUST BE RETURNED UPON DEMAND.
© COPYRIGHT KAWNEER COMPANY, INC., 2011

STEP - 17 INSTALL GLASS

STRUCTURAL GLAZED VERTICALS



THE LOCATION OF TEMPORARY EXTERIOR INFILL
RETAINERS SHOULD BE AT A MAXIMUM SPACING
OF 30" ON CENTER.

IF WINDS GREATER THAN 50 MPH (80KPH) ARE EXPECTED,
ADDITIONAL TEMPORARIES MAY BE REQUIRED. CONSULT
YOUR SEALANT AND/OR INFILL SUPPLIER FOR SPACING
RECOMMENDATIONS.

AT CORNERS AND SPLAYS RETAINERS SHOULD BE MADE
FROM A GOOD QUALITY HARDWOOD.
THESE RETAINERS ARE NOT SUPPLIED BY KAWNEER.



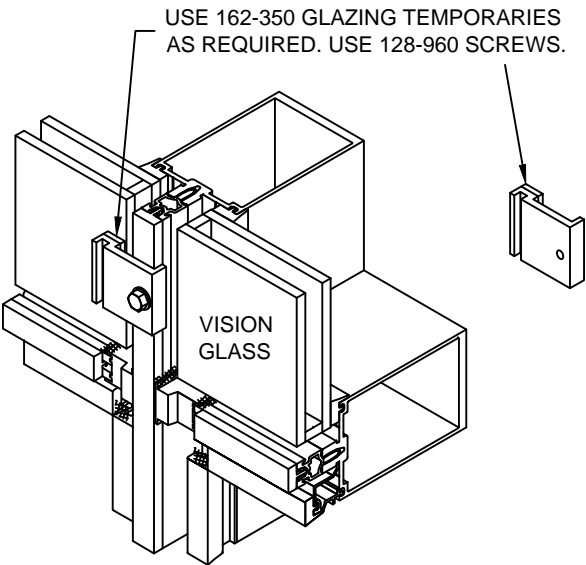
INSTALLATION
INSTRUCTIONS

Product Engineering & Development

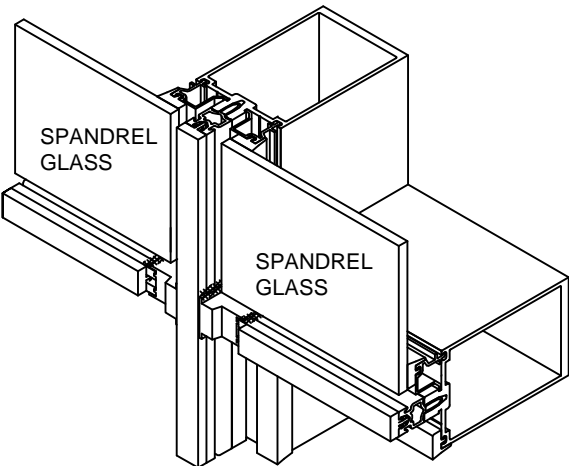
95449-095
09/09/13

STEP - 17 INSTALL GLASS

CAPTURED VERTICALS



MAXIMUM TEMPORARY SPACING IS 30". IF WINDS GREATER THAN 50 MPH (80KPH) ARE EXPECTED, ADDITIONAL TEMPORARIES MAY BE REQUIRED. CONSULT YOUR SEALANT AND/OR INFILL SUPPLIER FOR SPACING RECOMMENDATIONS. INSTALL PRESSURE PLATES WHERE POSSIBLE.



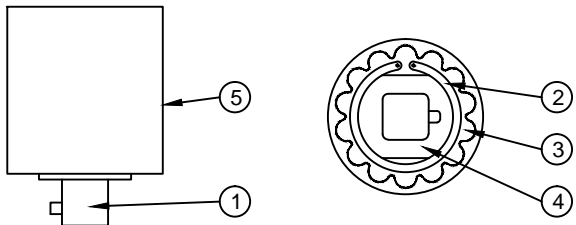
STEP - 18 INSTALL EXTERIOR PRESSURE PLATES



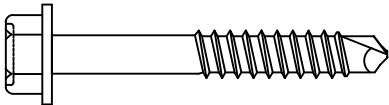
RECOMMEND USING TORQUE LIMIT TOOL 162-399 SEE NOTE.

HOW TO SET TORQUE LIMIT

- 1. ATTACH ANY CALIBRATED TORQUE INDICATOR TO OUTPUT STUB (1) AND DETERMINE PRESENT TORQUE SETTING WHILE HOLDING THE BODY (5), OR VICE-VERSA.
- 2. REMOVE SNAP RING (2) AND LOCKING PLATE (3).
- 3. ADJUST NUT (4) WITH OPEN-END WRENCH : CLOCKWISE TO INCREASE TORQUE, COUNTER- CLOCKWISE TO DECREASE TORQUE.
- 4. OBTAIN NEW TORQUE READING WITH THE CALIBRATED TORQUE INDICATOR. REPEAT PRECEDING STEP IF MORE ADJUSTMENT IS NECESSARY TO REACH DESIRED LIMIT.
- 5. REPLACE LOCKING PLATE INTO NOTCHES AND INSTALL SNAP RING. IF LOCKING PLATE DOES NOT "SEAT", MOVE THE ADJUSTING NUT SLIGHTLY UNTIL IT DROPS IN PLACE. THE DIRECTION IS BEST DETERMINED BY WHETHER A MINIMUM TORQUE APPLICATION OR A MAXIMUM ONE IS DESIRED.



INSTALL PRESSURE PLATES USING SCREWS 128-960 1/4-14 X 1-3/4" HEX WASHER HEAD SELF DRILLING SCREWS.



SCREWS ARE TO BE LOCATED 9" ON CENTER MAXIMUM. FOR PROJECTS DESIGNED FOR WIND LOADS GREATER THAN 60 PSF, APPLY PRESSURE PLATES SCREWS AT 6" ON CENTER.

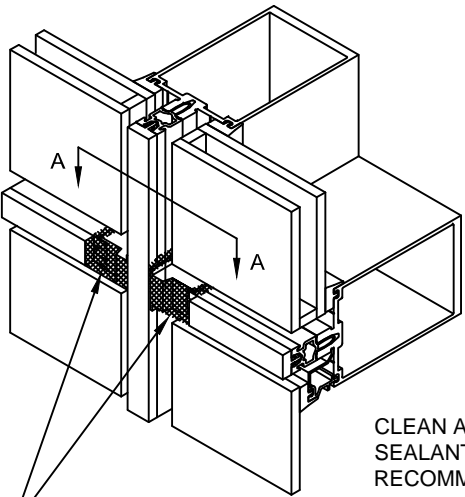
ALWAYS LOCATE A SCREW AS CLOSE AS POSSIBLE TO A HORIZONTAL JOINT. THIS WILL PROVIDE MAXIMUM PRESSURE FOR THE CRITICAL JOINT SEALS.

INSTALL HORIZONTAL PRESSURE PLATES WITH WEEP HOLES TOWARDS TOP OF HORIZONTAL.

AT EACH HORIZONTAL AND VERTICAL PRESSURE PLATE INSTALL TWO SCREWS PART WAY, THEN INSTALL THE THIRD SCREW ALL THE WAY, AND THEN TIGHTEN THE FIRST TWO SCREWS. THIS ELIMINATES LATERAL WALKING OF THE PRESSURE PLATE POSITION.

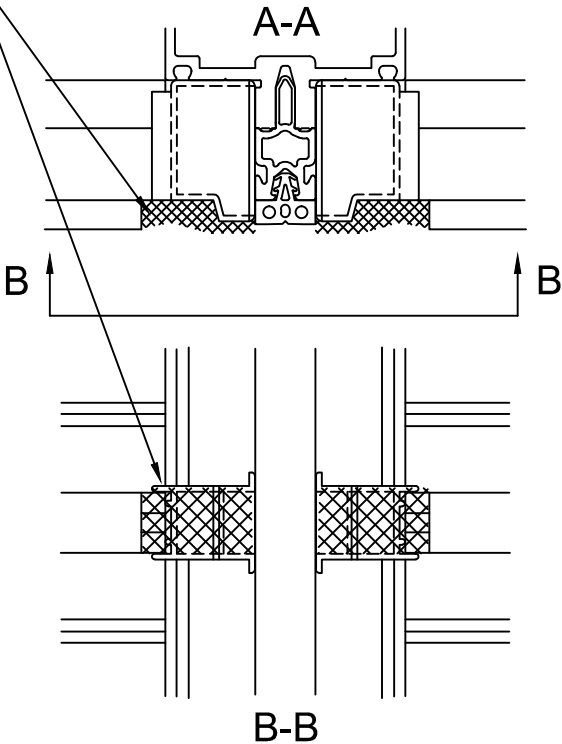
TORQUE ALL SCREWS TO 90 TO 100 INCH POUNDS. DURING COLD WEATHER, TORQUE SCREWS TO 50 INCH POUNDS UNTIL ALL 4 SIDES HAVE BEEN CLAMPED. THEN TORQUE SCREWS TO 90 TO 100 INCH POUNDS.

INSTALL VERTICAL PRESSURE PLATES AT CAPTURED VERTICALS



CLEAN ALL JOINTS PER SEALANT MANUFACTURER'S RECOMMENDATIONS

JUST BEFORE INSTALLING VERTICAL PRESSURE PLATES APPLY A GENEROUS AMOUNT OF SEALANT TO THE JOINT PLUG FACE FILLING JOINTS AS SHOWN.



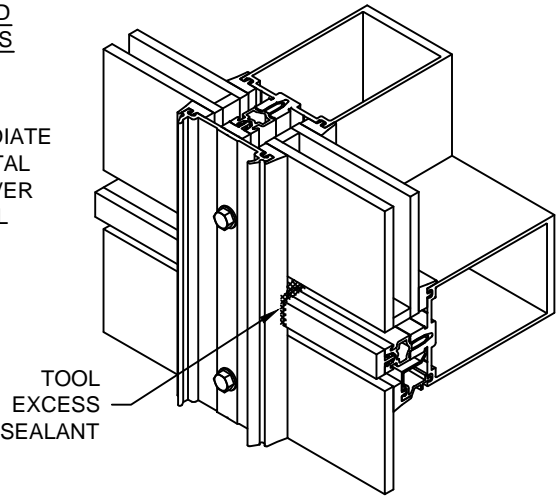
NOTE - THE TORQUE LIMIT TOOL WAS DESIGNED TO BE USED WITH A HAND DRIVEN DEVICE. THE TOOL CAN BE ADAPTED TO A DRILL MOTOR IF USED AT A MAXIMUM SPEED OF APPROX. 300 RPM. HIGHER SPEEDS CAN CAUSE OVERHEATING AND AFFECT THE ACCURACY. AFTER APPROX. 1 HOUR OF TOOL USAGE CHECK TORQUE SETTINGS WITH A TORQUE WRENCH.

CONFIDENTIAL AND PROPRIETARY INFORMATION KAWNEER COMPANY INC.

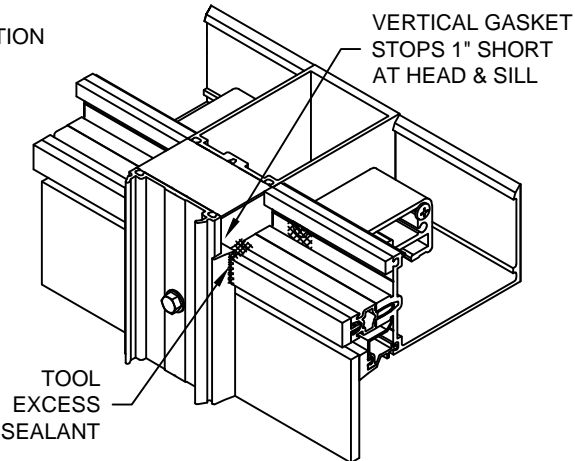
THESE DRAWINGS ARE THE SOLE AND EXCLUSIVE PROPERTY OF KAWNEER AND CONTAIN SENSITIVE, PRIVILEGED OR CONFIDENTIAL INFORMATION WHICH MAY BE USED ONLY FOR ITS BENEFIT. THE DISCLOSURE OF THESE DRAWINGS TO UNAUTHORIZED PERSONS IS STRICTLY PROHIBITED. THIS DOCUMENT AND ALL COPIES MUST BE RETURNED UPON DEMAND. © COPYRIGHT KAWNEER COMPANY, INC., 2011

CAPTURED VERTICALS

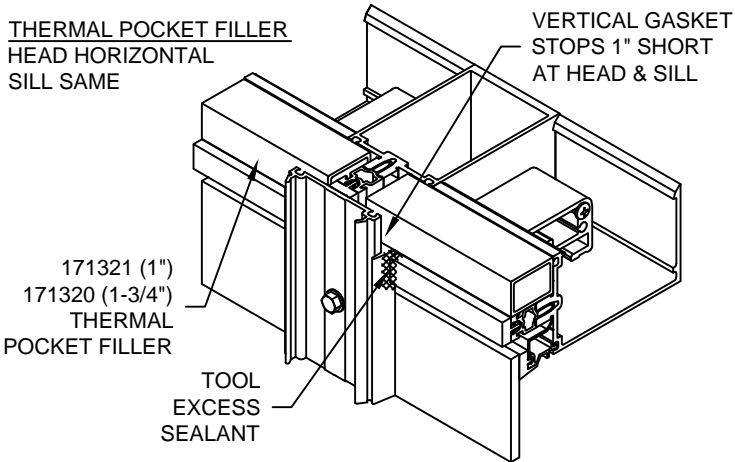
INTERMEDIATE HORIZONTAL VISION OVER SPANDREL



HEAD CONDITION SILL SAME



THERMAL POCKET FILLER HEAD HORIZONTAL SILL SAME



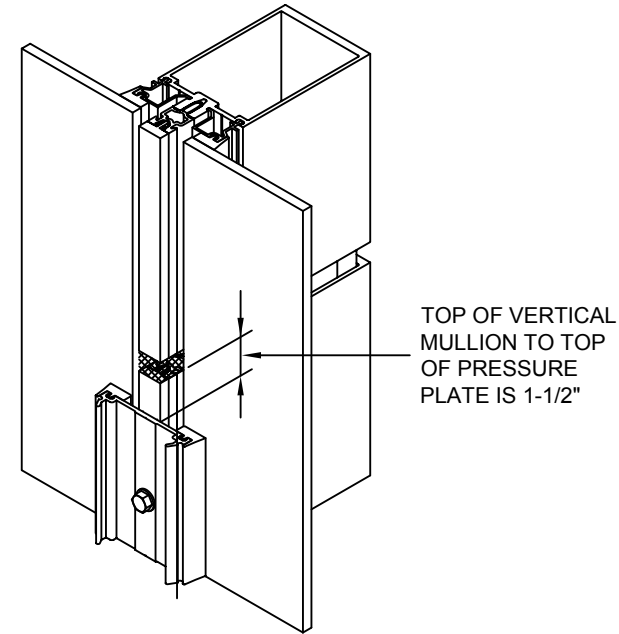
1600UT SYSTEM 2 INSTALLATION INSTRUCTIONS

Product Engineering & Development

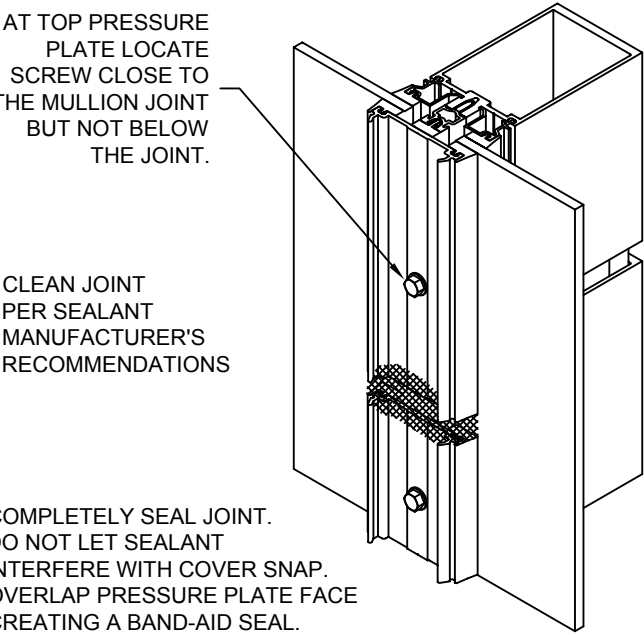
95449-094 04/26/13

STEP - 18 INSTALL EXTERIOR
PRESSURE PLATES

VERTICAL EXPANSION JOINTS
AT CAPTURED VERTICALS



TOP OF VERTICAL
MULLION TO TOP
OF PRESSURE
PLATE IS 1-1/2"



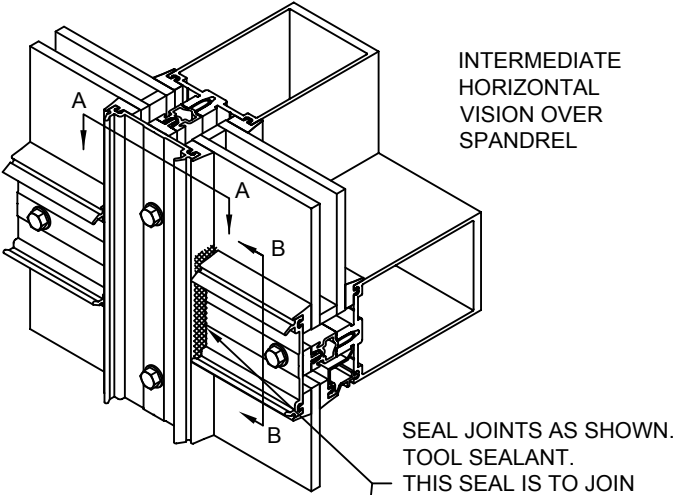
AT TOP PRESSURE
PLATE LOCATE
SCREW CLOSE TO
THE MULLION JOINT
BUT NOT BELOW
THE JOINT.

CLEAN JOINT
PER SEALANT
MANUFACTURER'S
RECOMMENDATIONS

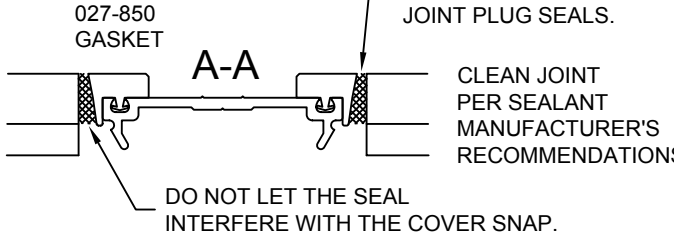
COMPLETELY SEAL JOINT.
DO NOT LET SEALANT
INTERFERE WITH COVER SNAP.
OVERLAP PRESSURE PLATE FACE
CREATING A BAND-AID SEAL.

INSTALL HORIZONTAL PRESSURE PLATES
AT CAPTURED VERTICALS

CENTER HORIZONTAL PRESSURE PLATES
SO END GAPS ARE EQUAL.



INTERMEDIATE
HORIZONTAL
VISION OVER
SPANDREL



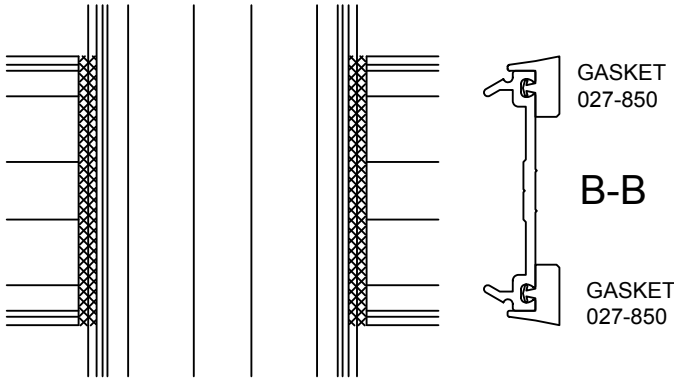
027-850
GASKET

A-A

SEAL JOINTS AS SHOWN.
TOOL SEALANT.
THIS SEAL IS TO JOIN
AND ADHERE TO THE
JOINT PLUG SEALS.

CLEAN JOINT
PER SEALANT
MANUFACTURER'S
RECOMMENDATIONS

DO NOT LET THE SEAL
INTERFERE WITH THE COVER SNAP.



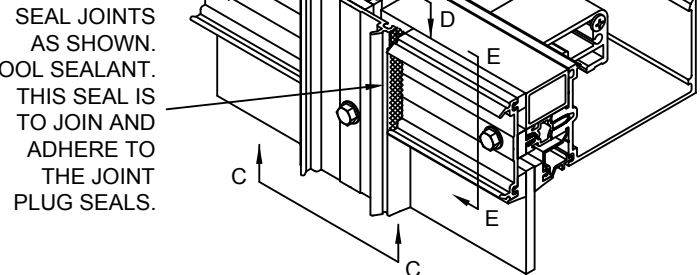
GASKET
027-850

B-B

GASKET
027-850

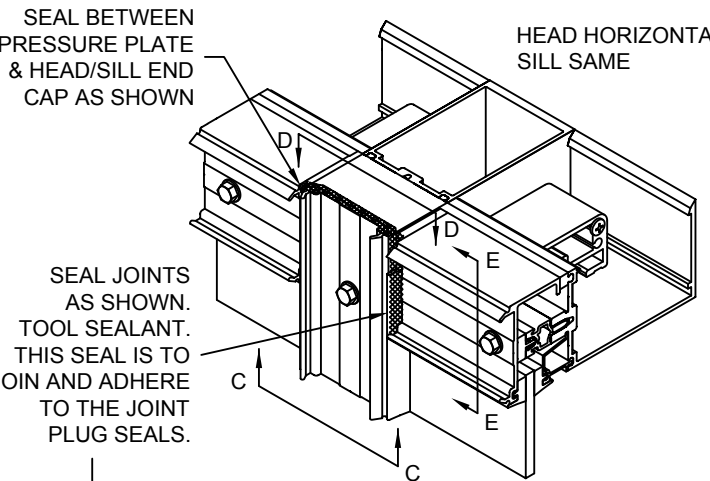
FACE VIEW

THERMAL POCKET FILLER
HEAD HORIZONTAL
SILL SAME



SEAL JOINTS
AS SHOWN.
TOOL SEALANT.
THIS SEAL IS TO JOIN
AND ADHERE TO
THE JOINT
PLUG SEALS.

INSTALL HORIZONTAL PRESSURE PLATES
AT CAPTURED VERTICALS



SEAL BETWEEN
PRESSURE PLATE
& HEAD/SILL END
CAP AS SHOWN

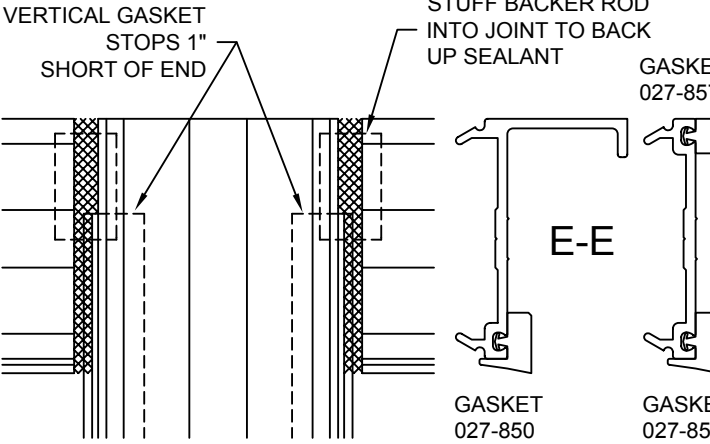
HEAD HORIZONTAL
SILL SAME

SEAL JOINTS
AS SHOWN.
TOOL SEALANT.
THIS SEAL IS TO
JOIN AND ADHERE
TO THE JOINT
PLUG SEALS.

D-D

CLEAN JOINT
PER SEALANT
MANUFACTURER'S
RECOMMENDATIONS

DO NOT LET THE SEAL
INTERFERE WITH THE
COVER SNAP.



VERTICAL GASKET
STOPS 1"
SHORT OF END

STUFF BACKER ROD
INTO JOINT TO BACK
UP SEALANT

GASKET
027-857

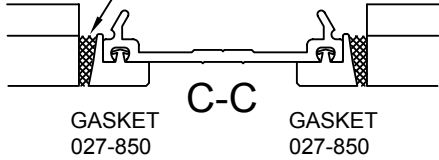
E-E

GASKET
027-850

GASKET
027-850

FACE VIEW

DO NOT LET THE SEAL
INTERFERE WITH THE COVER SNAP.



GASKET
027-850

C-C

GASKET
027-850

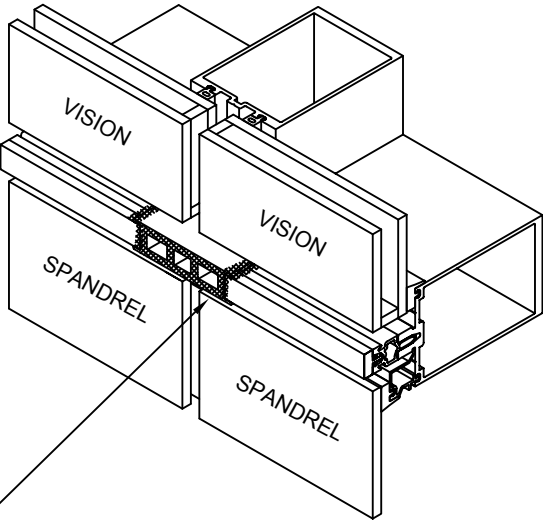
NOTE - THE TORQUE LIMIT TOOL WAS DESIGNED
TO BE USED WITH A HAND DRIVEN DEVICE. THE
TOOL CAN BE ADAPTED TO A DRILL MOTOR IF
USED AT A MAXIMUM SPEED OF APPROX. 300 RPM.
HIGHER SPEEDS CAN CAUSE OVERHEATING AND
AFFECT THE ACCURACY. AFTER APPROX. 1 HOUR
OF TOOL USAGE CHECK TORQUE SETTINGS WITH
A TORQUE WRENCH.

171911 (SHEET 10 OF 12)

CONFIDENTIAL AND PROPRIETARY INFORMATION
KAWNEER COMPANY INC.

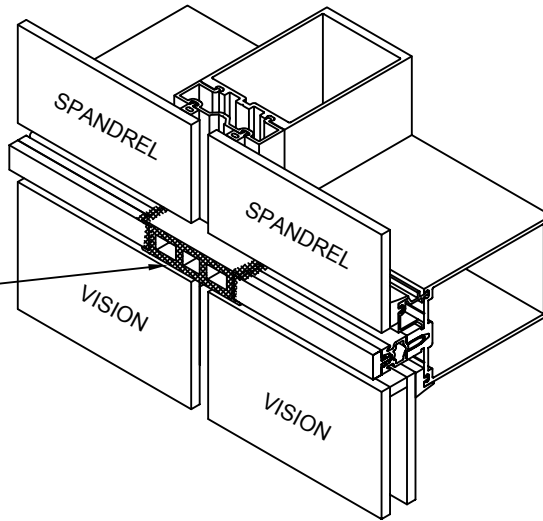
THESE DRAWINGS ARE THE SOLE AND EXCLUSIVE PROPERTY OF KAWNEER AND CONTAIN
SENSITIVE, PRIVILEGED OR CONFIDENTIAL INFORMATION WHICH MAY BE USED ONLY FOR ITS
BENEFIT. THE DISCLOSURE OF THESE DRAWINGS TO UNAUTHORIZED PERSONS IS STRICTLY
PROHIBITED. THIS DOCUMENT AND ALL COPIES MUST BE RETURNED UPON DEMAND.
© COPYRIGHT KAWNEER COMPANY, INC., 2011

INSTALL HORIZONTAL PRESSURE PLATES
AT STRUCTURAL GLAZED VERTICALS



JUST BEFORE APPLYING PRESSURE PLATE
APPLY A GENEROUS AMOUNT OF SEALANT
TO THE JOINT PLUG FACE.

CLEAN JOINT PER SEALANT
MANUFACTURER'S RECOMMENDATIONS



KAWNEER

1600UT SYSTEM 2
INSTALLATION
INSTRUCTIONS

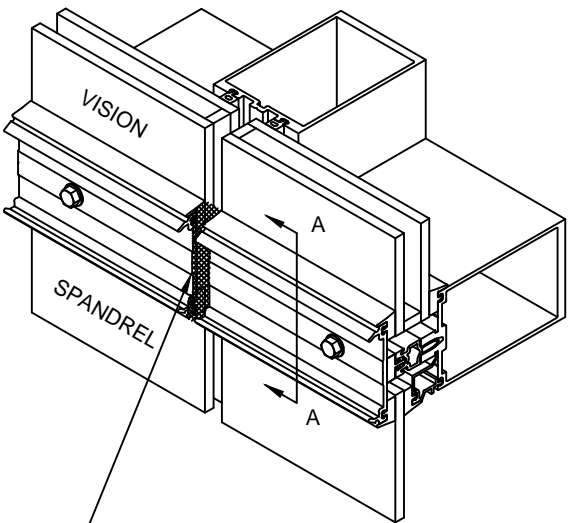
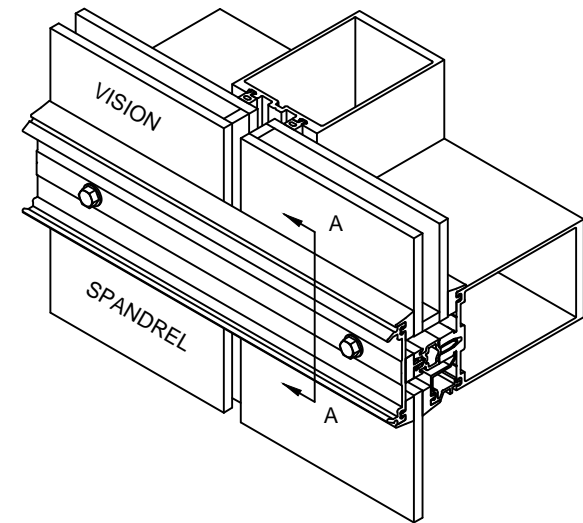
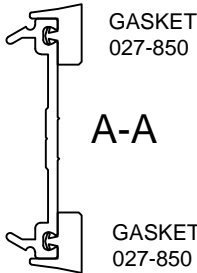
Product Engineering & Development

95449-82
06/24/11

171911 (SHEET 10 OF 12)

**STEP - 18 INSTALL EXTERIOR
PRESSURE PLATES**

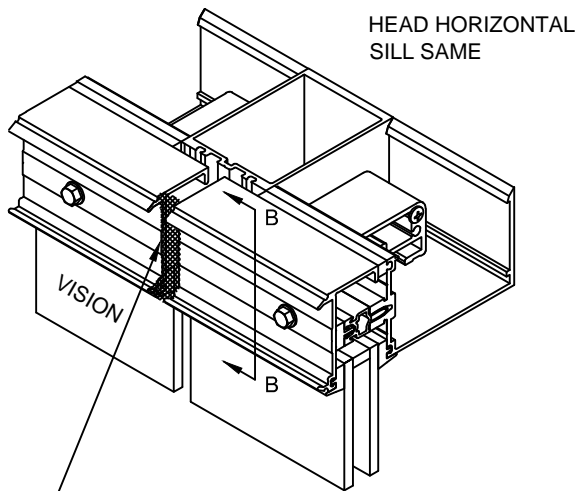
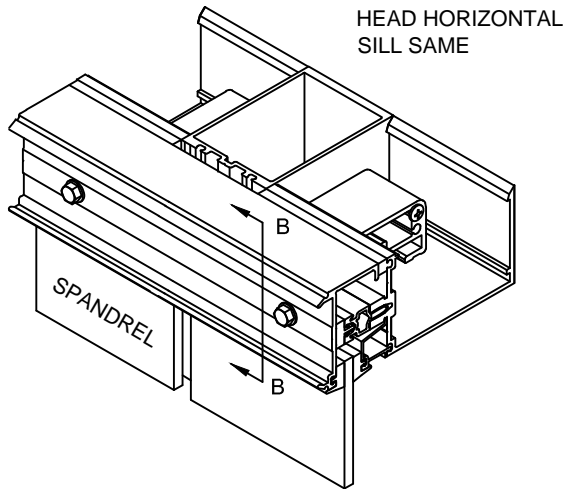
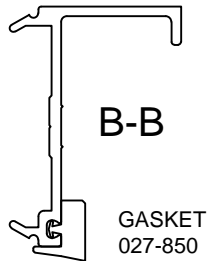
INSTALL HORIZONTAL PRESSURE PLATES
AT STRUCTURAL GLAZED VERTICALS



COMPLETELY SEAL HORIZONTAL
PRESSURE PLATE JOINT.
DO NOT LET SEALANT INTERFERE
WITH COVER SNAP.

CLEAN JOINT PER SEALANT
MANUFACTURER'S RECOMMENDATIONS

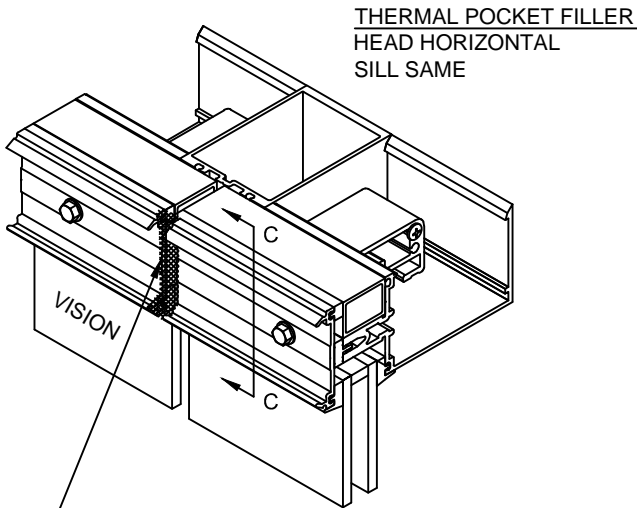
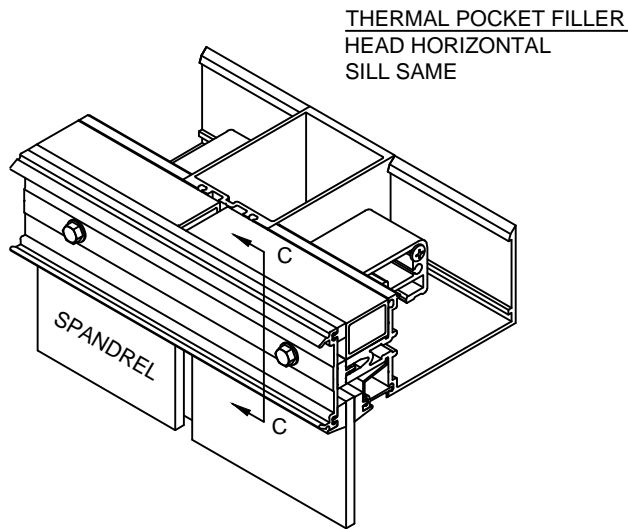
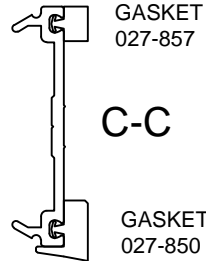
INSTALL HORIZONTAL PRESSURE PLATES
AT STRUCTURAL GLAZED VERTICALS



COMPLETELY SEAL HORIZONTAL
PRESSURE PLATE JOINT.
DO NOT LET SEALANT INTERFERE
WITH COVER SNAP.

CLEAN JOINT PER SEALANT
MANUFACTURER'S RECOMMENDATIONS

INSTALL HORIZONTAL PRESSURE PLATES
AT STRUCTURAL GLAZED VERTICALS



COMPLETELY SEAL HORIZONTAL
PRESSURE PLATE JOINT.
DO NOT LET SEALANT INTERFERE
WITH COVER SNAP.

CLEAN JOINT PER SEALANT
MANUFACTURER'S RECOMMENDATIONS

171911 (SHEET 11 OF 12)

CONFIDENTIAL AND PROPRIETARY INFORMATION
KAWNEER COMPANY INC.

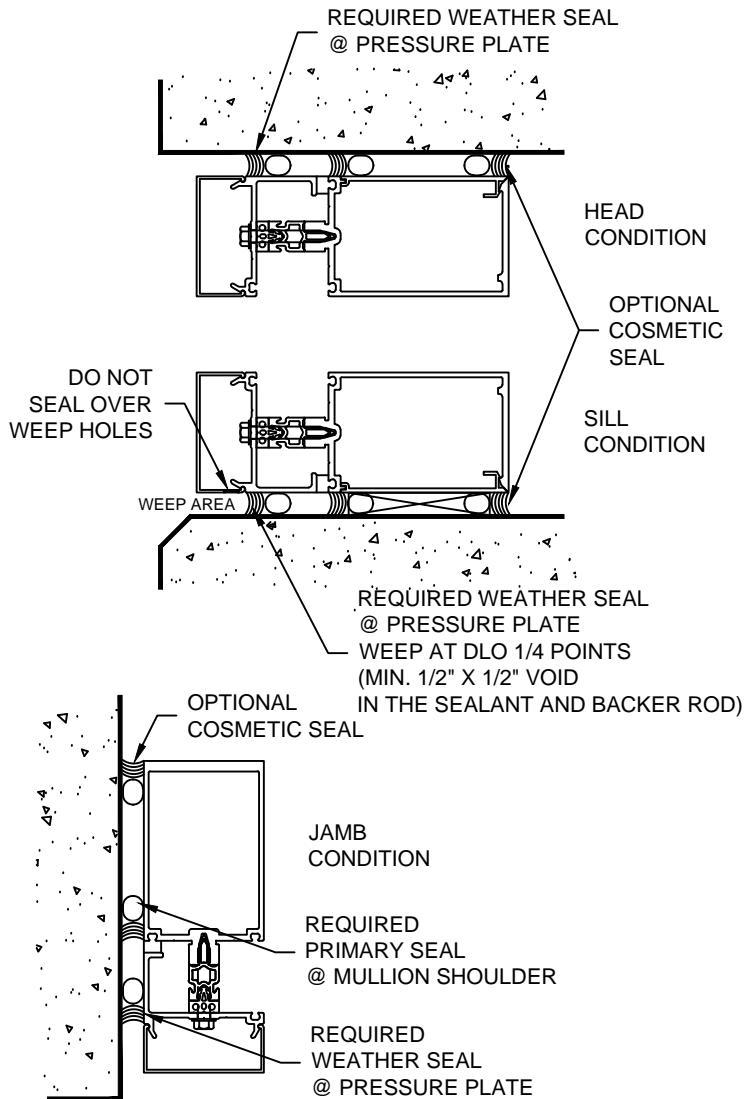
THESE DRAWINGS ARE THE SOLE AND EXCLUSIVE PROPERTY OF KAWNEER AND CONTAIN SENSITIVE, PRIVILEGED OR CONFIDENTIAL INFORMATION WHICH MAY BE USED ONLY FOR ITS BENEFIT. THE DISCLOSURE OF THESE DRAWINGS TO UNAUTHORIZED PERSONS IS STRICTLY PROHIBITED. THIS DOCUMENT AND ALL COPIES MUST BE RETURNED UPON DEMAND.
© COPYRIGHT KAWNEER COMPANY, INC., 2011

STEP - 19 INSTALL PERIMETER SEALS

PERIMETER WEATHER SEALS ARE REQUIRED TO BE INSTALLED AT PRESSURE PLATE. PERIMETER PRIMARY SEALS AT THE MULLION SHOULDER ARE COVERED IN STEP 14.

PRESSURE PLATE SEALS SHOULD BE INSTALLED BEFORE COVERS ARE APPLIED WHEN COVERS DEEPER THAN 3/4" ARE USED. SILL COVERS MUST REMAIN OPEN TO ALLOW WATER DRAINAGE TO THE EXTERIOR.

INSTALL SUITABLY SIZED BACKER ROD AND APPLY GENEROUS, CONTINUOUS BEAD OF SEALANT AS SHOWN.



KAWNEER

**1600UT SYSTEM 2
INSTALLATION
INSTRUCTIONS**

Product Engineering & Development

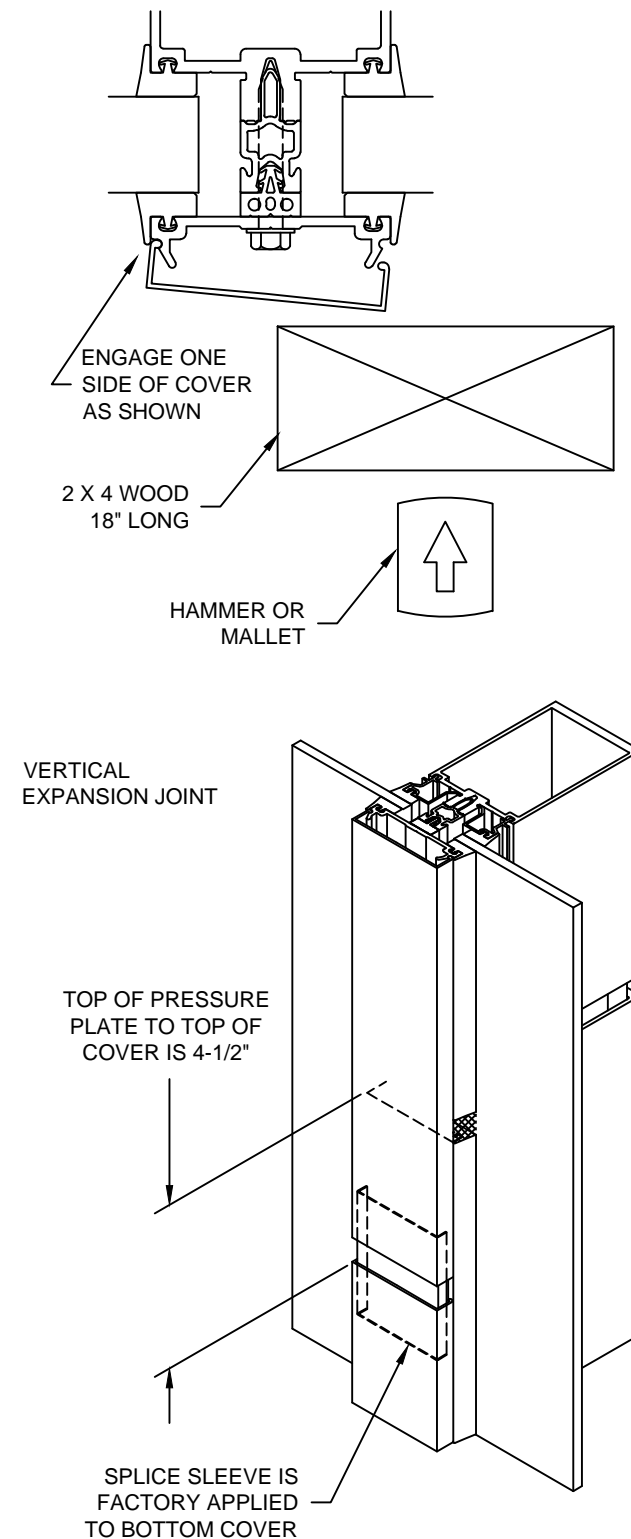
95449-094
04/26/13

171911 (SHEET 11 OF 12)

STEP - 20 INSTALL EXTERIOR COVERS

CAPTURED VERTICALS

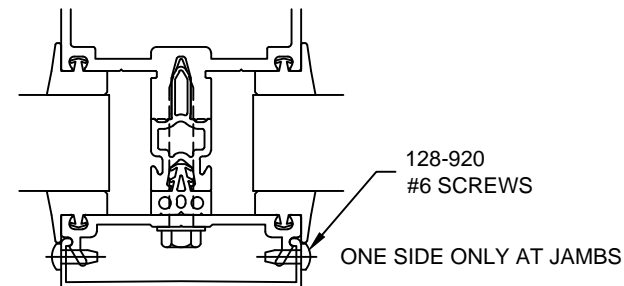
CARE MUST BE TAKEN TO AVOID DAMAGE TO COVERS DURING INSTALLATION. USE A 18" LONG PIECE OF 2 X 4 WOOD ALONG WITH A HAMMER OR Mallet TO SEAT THE COVER.



STEP - 20 INSTALL EXTERIOR COVERS

CAPTURED VERTICALS

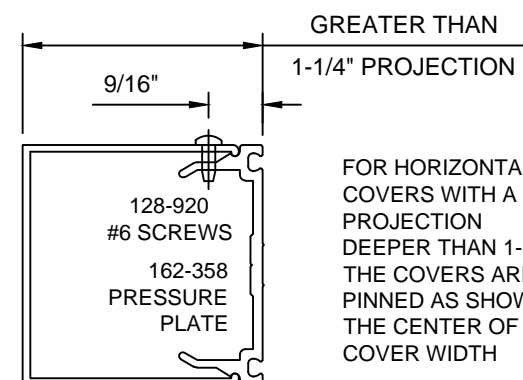
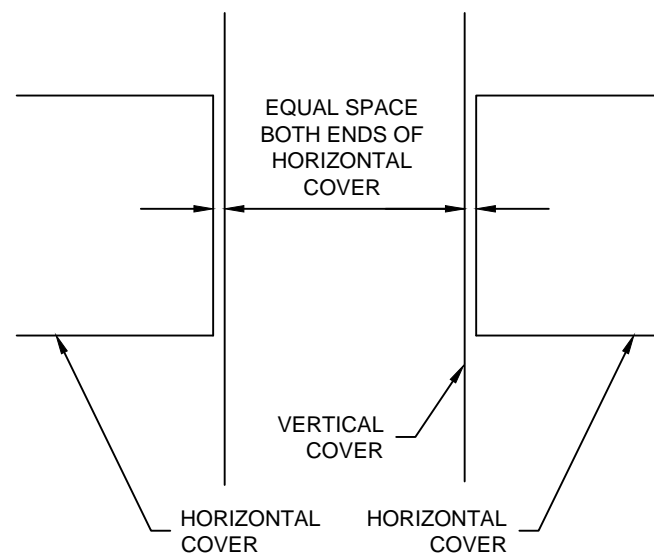
PINNING OF ALL VERTICAL COVERS IS REQUIRED FOR BOTH SIDES. DRILL A .106 DIA. HOLE (#36 DRILL) AND INSTALL 128-920 SCREWS #6 X 3/8" PAN HEAD TYPE B. LOCATE PINNING AT A HORIZONTAL CLOSEST TO THE COVER HEIGHT CENTER.



NOTE FOR 5" SIGHTLINE COVERS:

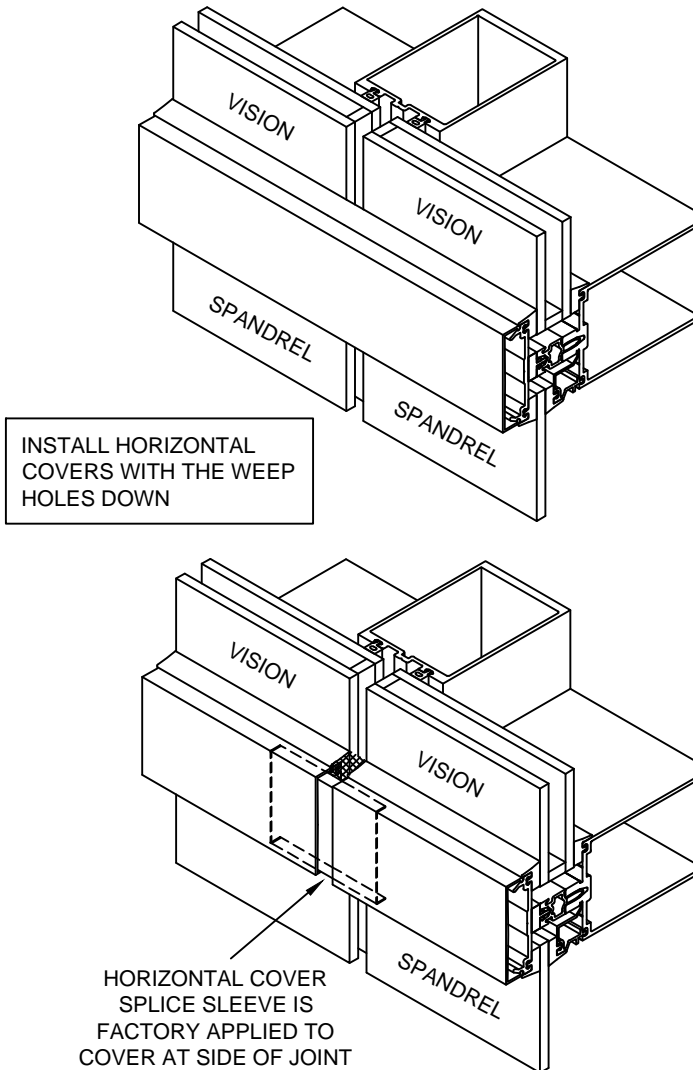
DUE TO LARGE EXTRUSION TOLERANCES, 5" SIGHTLINE COVERS MAY REQUIRE SEALANT OR PINNING TO HOLD IN PLACE.

INSTALL HORIZONTAL COVERS WITH THE WEEP HOLES DOWN



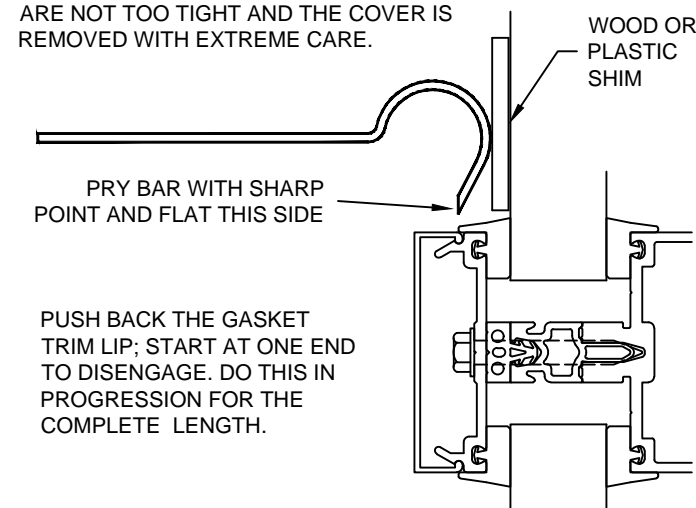
STEP - 20 INSTALL EXTERIOR COVERS

STRUCTURAL GLAZED VERTICALS



REMOVING COVERS

COVERS CAN BE SAVED IF TOLERANCES ARE NOT TOO TIGHT AND THE COVER IS REMOVED WITH EXTREME CARE.



171911 (SHEET 12 OF 12)

CONFIDENTIAL AND PROPRIETARY INFORMATION
KAWNEER COMPANY INC.

THESE DRAWINGS ARE THE SOLE AND EXCLUSIVE PROPERTY OF KAWNEER AND CONTAIN SENSITIVE, PRIVILEGED OR CONFIDENTIAL INFORMATION WHICH MAY BE USED ONLY FOR ITS BENEFIT. THE DISCLOSURE OF THESE DRAWINGS TO UNAUTHORIZED PERSONS IS STRICTLY PROHIBITED. THIS DOCUMENT AND ALL COPIES MUST BE RETURNED UPON DEMAND.
© COPYRIGHT KAWNEER COMPANY, INC., 2011

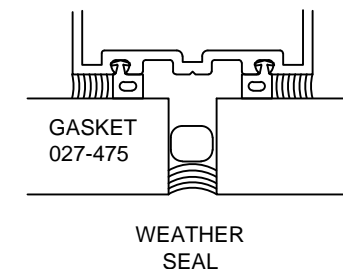
STEP - 21 INSTALL STRUCTURAL AND WEATHER SEALS

KAWNEER DOES NOT SUPPLY SEALANT. SEALANT TO BE SILICONE AS RECOMMENDED BY THE SEALANT MANUFACTURER. INFILL AND METAL TO BE CLEANED PER THE SEALANT MANUFACTURER'S RECOMMENDATIONS. SEALANT BACKUP ROD TO BE PER THE SEALANT MANUFACTURER'S RECOMMENDATIONS.

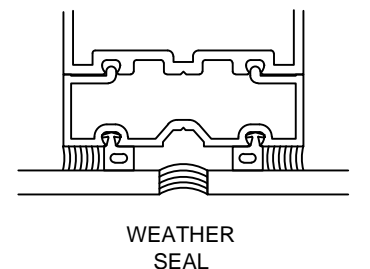
FILL SPACE BETWEEN INSULATED UNITS AND BEHIND SINGLE GLAZED UNITS WITH RECOMMENDED BACKUP ROD. APPLY STRUCTURAL SEAL AND WEATHER SEAL AS SHOWN.

ALLOW STRUCTURAL SEAL TO CURE PER SEALANT MANUFACTURER'S RECOMMENDATIONS. THEN REMOVE TEMPORARY RETAINERS, SEAL FASTENER HOLES AND FILL WEATHER SEAL HOLES.

VISION AT INTERIOR STRUCTURAL SEAL



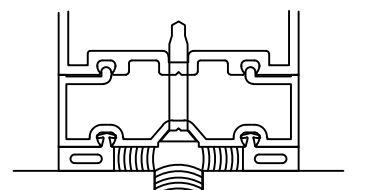
SPANDREL AT INTERIOR STRUCTURAL SEAL



VISION AT EXTERIOR STRUCTURAL SEAL



SPANDREL AT EXTERIOR STRUCTURAL SEAL



EXTERIOR STRUCTURAL SEAL MUST BE APPLIED IN THREE STEPS. EACH SIDE SEPARATELY; THEN THE WEATHER SEAL.

KAWNEER

1600UT SYSTEM 2
INSTALLATION
INSTRUCTIONS

Product Engineering & Development

95449-094
04/26/13

171911 (SHEET 12 OF 12)