

HANDLING, STORING, AND PROTECTION OF ALUMINUM

The material must be protected against damage. The following precautions are recommended to assure early acceptance of your products and workmanship.

A. HANDLE CAREFULLY - Don't drop from the truck. Stack with adequate separation so material will not rub together. Store off the ground. Protect against elements and other construction trades. Wear hand protection to prevent injury due to sharp edges of cut extrusions.

B. KEEP MATERIAL AWAY FROM WATER, MUD AND SPRAY - Prevent cement, plaster, or other materials from damaging the finish.

C. PROTECT THE MATERIALS AFTER ERECTION - Protect by wrapping with Kraft paper or by erecting Visqueen or canvas splatter screen. Cement, plaster, terrazzo, other alkaline solutions and acid based materials used to clean masonry are very harmful to the finish and should be removed with water and mild soap IMMEDIATELY.

GENERAL INSTALLATION NOTES

The following practices are recommended for all installations:

A. CHECK SHOP DRAWINGS, INSTALLATION INSTRUCTIONS and GLAZING INSTRUCTIONS to become thoroughly familiar with the project. The SHOP DRAWINGS take precedence and include specific details for the project. The INSTALLATION INSTRUCTIONS are of a general nature and cover most common conditions.

B. All materials are to be INSTALLED PLUMB, LEVEL, AND TRUE.

C. All work should start from bench marks and/or column lines as established by the ARCHITECTURAL DRAWINGS and the GENERAL CONTRACTOR. Check mullion spacing from both ends of the masonry opening to prevent dimensional buildup of day light opening.

D. Make certain that construction which will receive your materials is in accordance with the contract documents. If not, notify the GENERAL CONTRACTOR IN WRITING and resolve differences before proceeding with your work.

E. Isolate all aluminum to be placed directly in contact with uncured masonry or incompatible materials with a heavy coat of zinc chromate or bituminous paint.

F. Check all materials on arrival for quantity and be sure you have everything required to begin installation.

G. Sealants must be compatible with all materials with which they have contact, including other sealant surfaces. Consult with sealant manufacturer for recommendations relative to joint size, shelf life, compatibility, priming, tooling, adhesion, etc.

H. FASTENING - "Fastening" means any method of securing one part to another or to adjacent materials. These instructions specify only those fasteners used within the system. Due to varying perimeter conditions and job performance requirements, anchor fasteners are not specified in these instructions. For anchor fastening, refer to the Shop Drawings or consult the fastener supplier.

I. CHECK OPENINGS - Make certain that the opening which will receive your materials is in accordance with the contract documents. If not, notify the GENERAL CONTRACTOR IN WRITING and resolve differences before proceeding with your work.

J. BUILDING CODES - Glass and glazing codes governing the design and use of products vary widely. Kawneer does not control the selection of product configurations, operating hardware, or glazing materials, and assumes no responsibility for these design considerations. It is the responsibility of the owner, specifier, architect, general contractor and the installer to make these selections in strict conformance with all applicable codes.

K. EXPANSION JOINTS - Expansion joints and perimeter seals shown in these instructions and in the shop drawings are shown at normal size. Actual dimensions may vary due to perimeter conditions and /or difference in metal temperature between the time of fabrication and time of installation. For example, a 12 foot unrestrained length of aluminum extrusion can expand or contract 3/32" over a 50° F temperature change. Any movement potential should be accounted for at the time of installation.

L. FIELD TESTING - It is recommended that a Water Hose Test be conducted once a sufficient portion of the framing is installed, glazed and caulked to ensure proper installation. The Water Hose Test shall be conducted in accordance with AAMA 501.2. In addition, larger projects should have periodic Water Hose Tests as additional precautionary measures.

SILICONE GLAZING NOTE

This SSG system requires structural silicone. The glazing installer is responsible for selecting and contacting the silicone manufacturer to determine which type of silicone is to be used and what samples are required to be submitted for adhesion and compatibility testing. The silicone sealant shall not be applied to Kawneer products without the approval of the silicone manufacturer and until all required testing is completed and detailed application instructions have been delivered to the installer by the silicone manufacturer. If you find that silicone manufacturer's installation instructions are not in accordance with Kawneer's installation instructions, it is your responsibility to notify Kawneer of the conflict prior to glazing .

Your glass supplier must be made aware that their glass will be used in an SSG application. The application must be approved by the glass supplier prior to glazing .

For any structural silicone glazed product application that is not shown in Kawneer's standard literature, the application must be approved.

1600 L · R NOTES

1600 LR IS AVAILABLE WITH 1" FRAMING MEMBERS WHICH ACCEPT BOTH 1" AND 1/4" INFILLS.

THE PERIMETER MULLION FOR THE 5 3/4" AND 7 1/4" SYSTEMS IS NOT INTENDED TO BE USED IN A MULTI-SPAN APPLICATION. USE THE TYPICAL CAPTURED MULLION AT JAMBS WHERE THE APPLICATION OF A SPLICE SLEEVE IS REQUIRED.

THE PERIMETER MULLION FOR THE 5 3/4" AND 7 1/4" SYSTEMS IS TO BE USED FOR ALL HEAD AND SILL HORIZONTAL APPLICATIONS.

GLASS BITE IS 1" AT INTERMEDIATE VERTICALS AND 1/2" AT HORIZONTALS AND VERTICAL JAMBS. GLASS SIZES MUST BE CALCULATED FROM APPROVED SHOP DRAWINGS.

UNLESS OTHERWISE SPECIFIED, IT IS RECOMMENDED THAT SILICONE SEALANT BE USED FOR ALL INTERNAL SEALS.

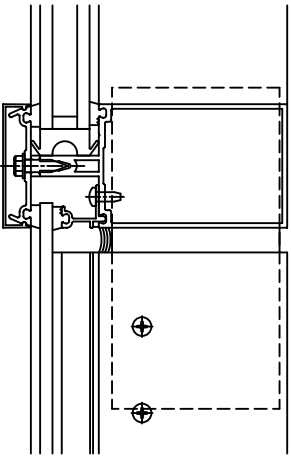
SEALANT MUST BE APPLIED PER THE SEALANT MANUFACTURER'S RECOMMENDATIONS AND PASS ALL ADHESION AND COMPATIBILITY TESTING. AT ALL JOINT SEALS, SEALANT MUST ADHERE TO METAL, GASKETS, THERMAL SEPARATOR AND JOINT PLUG MATERIALS. CLEAN ALL SURFACES PRIOR TO APPLICATION OF SEALANT AND PRIME WHERE NECESSARY TO ACHIEVE PROPER ADHESION.

EXTERIOR GLASS WEATHER SEAL - SEALANT TO BE A TYPE AS RECOMMENDED BY THE MANUFACTURER OF THE STRUCTURAL SEALANT BEING USED FOR THIS PROJECT. SEALANT MUST BE APPLIED PER THE SEALANT MANUFACTURER'S RECOMMENDATIONS. WEATHER SEAL SEALANT MUST ADHERE TO EXTERIOR GASKET MATERIAL.

THE TERM "CAPTURED VERTICALS OR CAPTURED HORIZONTALS" WILL BE USED THROUGHOUT THESE INSTRUCTIONS. THIS MEANS FRAMING MEMBERS THAT ACCEPT AN EXTERIOR PRESSURE PLATE AND COVERS. "STRUCTURAL GLAZED VERTICALS" DO NOT ACCEPT EXTERIOR METAL.

VERTICAL MULLION SPLICE - VERTICAL MULLIONS THAT ARE STRUCTURALLY GLAZED MUST BE SPLICED AT A HORIZONTAL. LOCATION OF THIS SPLICE MUST BE REVIEWED FOR STRUCTURAL INTEGRITY BY FACTORY ENGINEERING.

TYPICAL SPLICE LOCATION VISION OVER SPANDREL HORIZONTAL



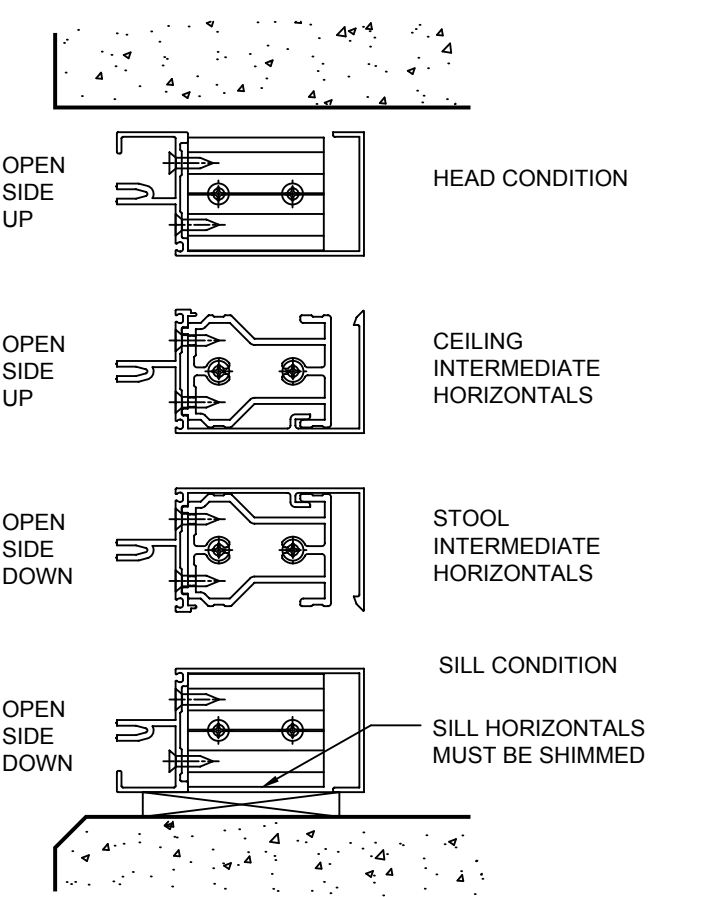
CONFIDENTIAL AND PROPRIETARY INFORMATION
KAWNEER COMPANY INC.

THESE DRAWINGS ARE THE SOLE AND EXCLUSIVE PROPERTY OF KAWNEER AND CONTAIN SENSITIVE, PRIVILEGED OR CONFIDENTIAL INFORMATION WHICH MAY BE USED ONLY FOR ITS BENEFIT. THE DISCLOSURE OF THESE DRAWINGS TO UNAUTHORIZED PERSONS IS STRICTLY PROHIBITED. THIS DOCUMENT AND ALL COPIES MUST BE RETURNED UPON DEMAND.
© COPYRIGHT KAWNEER COMPANY, INC., 2004

OPEN BACK HORIZONTAL NOTES

THE OPEN BACK HORIZONTAL IS TO BE TYPICALLY USED FOR LAST BAY INTERMEDIATE HORIZONTALS.

THE OPEN BACK HORIZONTAL CAN BE USED AT OTHER INTERMEDIATE CONDITIONS IF IT IS A ADVANTAGE TO THE JOB DESIGN.



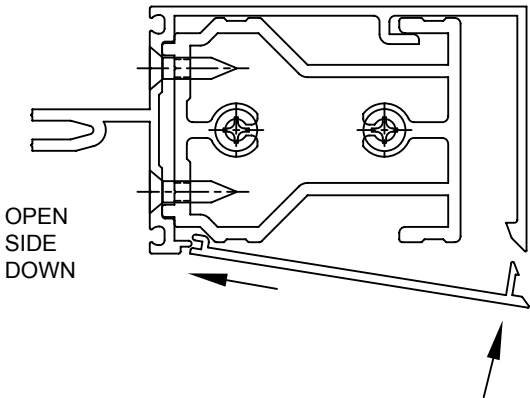
1600 L · R
SSG
INSTALLATION
INSTRUCTIONS

Product Engineering & Development

95503-07
12/07/07

OPEN BACK HORIZONTAL NOTES

WHEN THE OPEN SIDE OF THE OPEN BACK HORIZONTAL IS EXPOSED AND AT EYE LEVEL A SNAP-IN FILLER IS AVAILABLE.



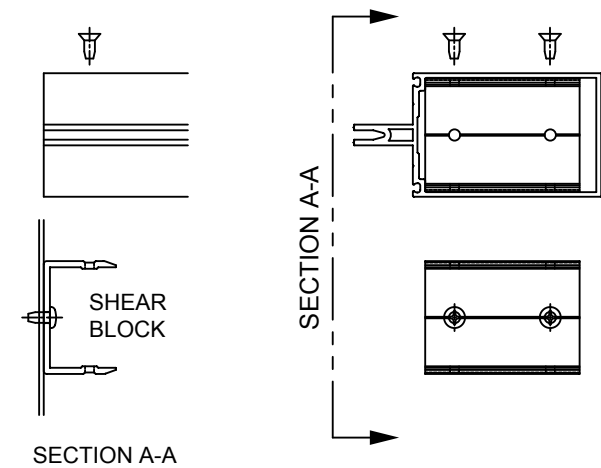
WHEN THE SNAP-IN FILLER IS NOT USED AND DUE TO STANDARD COMMERCIAL EXTRUDING TOLERANCES, IT MAY BE REQUIRED TO USE A 6" PIECE OF THE FILLER AT EACH END OF A HORIZONTAL.

USE PART 162-316 FOR THE 5 3/4" DEEP SYSTEM
USE PART 162-317 FOR THE 7 1/4" DEEP SYSTEM

HORIZONTALS AT 90° AND 135° CORNERS

OPEN BACK HORIZONTALS CAN NOT BE USED AT INTERMEDIATE LOCATIONS AT 90° & 135° CORNERS. USE 168-001 FOR THE 5 3/4" SYSTEM OR 168-011 FOR THE 7 1/4" SYSTEM. THE SHEAR BLOCK CONNECTION WILL BE AS SHOWN BELOW.

ALSO REFER TO CORNER INSTRUCTIONS 168-963



CHECK OPENINGS

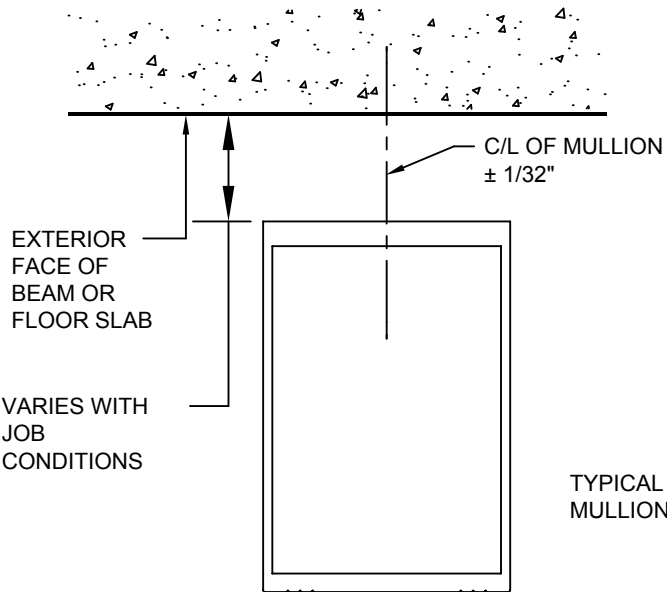
ELEVATIONS AND SLABS MUST BE WITHIN ADJUSTMENT OF ANCHORING SYSTEM. SEE APPROVED SHOP DRAWINGS FOR ALLOWABLE ADJUSTMENT.

ANCHORING SURFACES OF PERIMETER CONSTRUCTION MUST BE LEVEL AND PLUMB WITHIN THE ADJUSTMENT LIMITS OF THE HEAD, SILL AND JAMB. SEE APPROVED SHOP DRAWINGS FOR ALLOWABLE ADJUSTMENT.

LAY OUT ANCHOR AND MULLION CENTERLINES

USE WALL LINES ESTABLISHED BY THE GENERAL CONTRACTOR. ON EACH FLOOR, LAY OUT A REFERENCE LINE TO ESTABLISH IN AND OUT WALL LOCATIONS.

USE COLUMN CENTER LINES ESTABLISHED BY THE GENERAL CONTRACTOR. ON EACH FLOOR, LAY OUT MULLION CENTER LINES AND ANCHOR CENTER LINES.



SEE APPROVED SHOP DRAWINGS FOR ANCHOR LAYOUTS

INSTALL PRE-SET ANCHORS IF APPLICABLE

USING LOCATION LINES PREVIOUSLY ESTABLISHED, INSTALL PRE-SET ANCHORS IN PLACE PER APPROVED SHOP DRAWINGS.

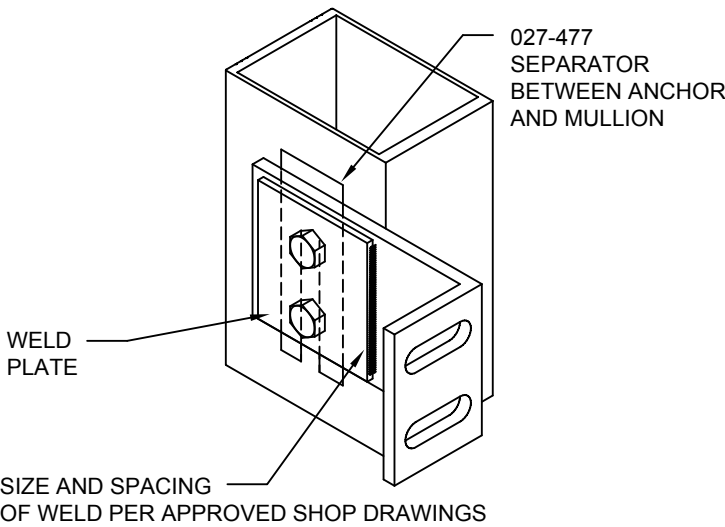
FRAME ASSEMBLY

ATTACH ANCHORS TO MULLIONS WHERE APPLICABLE.

STANDARD ANCHOR PREP IS THRU-BOLTED AT INTERMEDIATE VERTICALS AND TAPPING PLATES ARE USED AT JAMB VERTICALS. REFER TO APPROVED SHOP DRAWINGS FOR CORRECT METHOD.

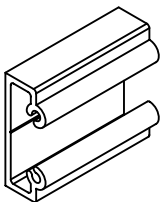
WHEN WELDING ANCHORS, PROTECT INSTALLED GLASS AND METAL FROM WELD SPLATTER.

DETAIL SAME FOR CAPTURED VERTICALS.

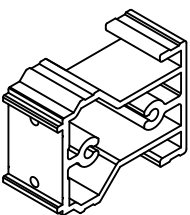


DO NOT OVER TIGHTEN ANCHOR CONNECTIONS. TIGHTEN TO A "SNUG TIGHT" POSITION WITH PARTS BROUGHT INTO GOOD CONTACT. BE SURE ANY SPRING TYPE LOCK WASHERS ARE COMPRESSED. THEN TIGHTEN APPROXIMATELY 1/2 MORE TURN.

ATTACH SHEAR BLOCKS.



TYPICAL SHEAR BLOCKS
168-260 5 3/4" SYSTEM
168-270 7 1/4" SYSTEM



SHEAR BLOCKS FOR FOR INTERMEDIATE OPEN BACK HORIZONTALS
168-377 5 3/4" SYSTEM
168-378 7 1/4" SYSTEM

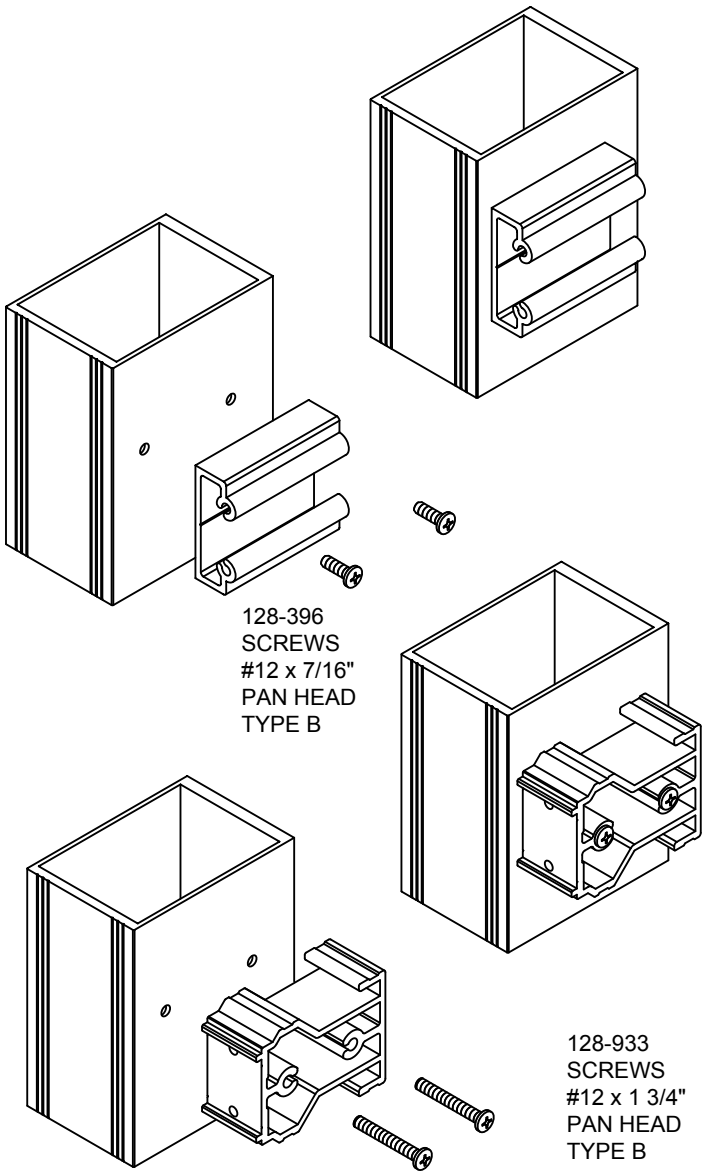
CONFIDENTIAL AND PROPRIETARY INFORMATION
KAWNEER COMPANY INC.

THESE DRAWINGS ARE THE SOLE AND EXCLUSIVE PROPERTY OF KAWNEER AND CONTAIN SENSITIVE, PRIVILEGED OR CONFIDENTIAL INFORMATION WHICH MAY BE USED ONLY FOR ITS BENEFIT. THE DISCLOSURE OF THESE DRAWINGS TO UNAUTHORIZED PERSONS IS STRICTLY PROHIBITED. THIS DOCUMENT AND ALL COPIES MUST BE RETURNED UPON DEMAND.
© COPYRIGHT KAWNEER COMPANY, INC., 2004

FRAME ASSEMBLY

ATTACH SHEAR BLOCKS.

DETAIL SAME FOR CAPTURED VERTICALS.



1600 L · R
SSG
INSTALLATION
INSTRUCTIONS

Product Engineering & Development

95503-07
12/07/07

FRAME ASSEMBLY

HEAD/SILL SHEAR BLOCK/ANCHOR
WHERE APPLICABLE AND SHOWN BELOW.

168-261 5 3/4" SYSTEM
168-271 7 1/4" SYSTEM

STRUCTURAL INTEGRITY OF
ANCHOR AND FASTENERS MUST BE
CHECKED BY FACTORY ENGINEERS.

ANCHOR FASTENER
LOCATIONS PER
APPROVED
SHOP DRAWINGS

128-396
SCREWS
#12 x 7/16"
PAN HEAD
TYPE B

AT JAMB VERTICALS, ATTACH
168-040 PERIMETER FILLER.
CLEAN AND APPLY SEALANT PER
SEALANT MANUFACTURER'S
RECOMMENDATIONS.

APPLY SEALANT
IN GLAZING REGLET

ALIGN TOP OF PERIMETER FILLER
WITH TOP OF MULLION.

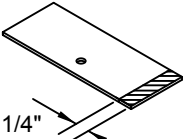
128-396
SCREWS
#12 x 7/16"
PAN HEAD
TYPE B

MATCH DRILL .185 DIA. (#13 DRILL)
HOLES IN JAMB MULLION. APPLY
SEALANT IN HOLES AND FASTEN
WITH 128-396 SCREWS. SEAL OVER
FASTENER HEADS.

FRAME ASSEMBLY

AT JAMB VERTICALS, INSTALL HEAD AND SILL END
CAPS WITH 128-396 FASTENERS INTO SCREW RACE.
SET IN SEALANT.

168-240



FIELD MODIFY
AT JAMB SIDE

168-240

APPLY SEALANT AT
TONGUE, PERIMETER
FILLER AND FACE OF
TUBE AT TOP AND
BOTTOM

168-240

ALIGN FRONT EDGE OF
CAP WITH FRONT EDGE
OF TONGUE.

128-396
#12 x 7/16"
PAN HEAD
TYPE B

128-396
#12 x 7/16"
PAN HEAD
TYPE B

APPLY SEALANT INTO SCREW RACE TO SEAL END
OF FASTENER AT TOP AND BOTTOM. TOOL SEALANT
AROUND ALL EDGES. SEAL OVER FASTENER HEAD.

TOOL SEALANT

TOOL SEALANT

APPLY SEALANT

TOOL SEALANT

TOOL SEALANT

APPLY SEALANT

TOOL SEALANT

INSTALL
VERTICAL MULLIONS

"F" OR "T" ANCHORS
WHERE APPLICABLE

"F" AND "T"
ANCHOR FASTENER
LOCATIONS PER
APPROVED
SHOP DRAWINGS

THESE SHEAR
BLOCKS MAY NEED
TO BE REMOVED
TO INSTALL A
ANCHOR FASTENER
THAT MIGHT BE
LOCATED CLOSE TO
THE MULLION

ANCHOR FASTENER
LOCATIONS PER
APPROVED
SHOP DRAWINGS

"F" ANCHORS
WHERE APPLICABLE

"T" ANCHORS
WHERE APPLICABLE

168971 (SHEET 03 OF 15)

CONFIDENTIAL AND PROPRIETARY INFORMATION
KAWNEER COMPANY INC.

THESE DRAWINGS ARE THE SOLE AND EXCLUSIVE PROPERTY OF KAWNEER AND CONTAIN
SENSITIVE, PRIVILEGED OR CONFIDENTIAL INFORMATION WHICH MAY BE USED ONLY FOR ITS
BENEFIT. THE DISCLOSURE OF THESE DRAWINGS TO UNAUTHORIZED PERSONS IS STRICTLY
PROHIBITED. THIS DOCUMENT AND ALL COPIES MUST BE RETURNED UPON DEMAND.
© COPYRIGHT KAWNEER COMPANY, INC., 2004

INSTALL VERTICAL
MULLIONS

DIMENSION BUILD-UP CHECK

CHECK OVERALL FRAME DIMENSIONS ABOUT
EVERY FIVE MULLIONS ON LONG RUNS.
THIS IS TO AVOID DIMENSION BUILD-UP.

10 UNITS CHECK DIMENSION

5 UNITS CHECK DIM

KAWNEER

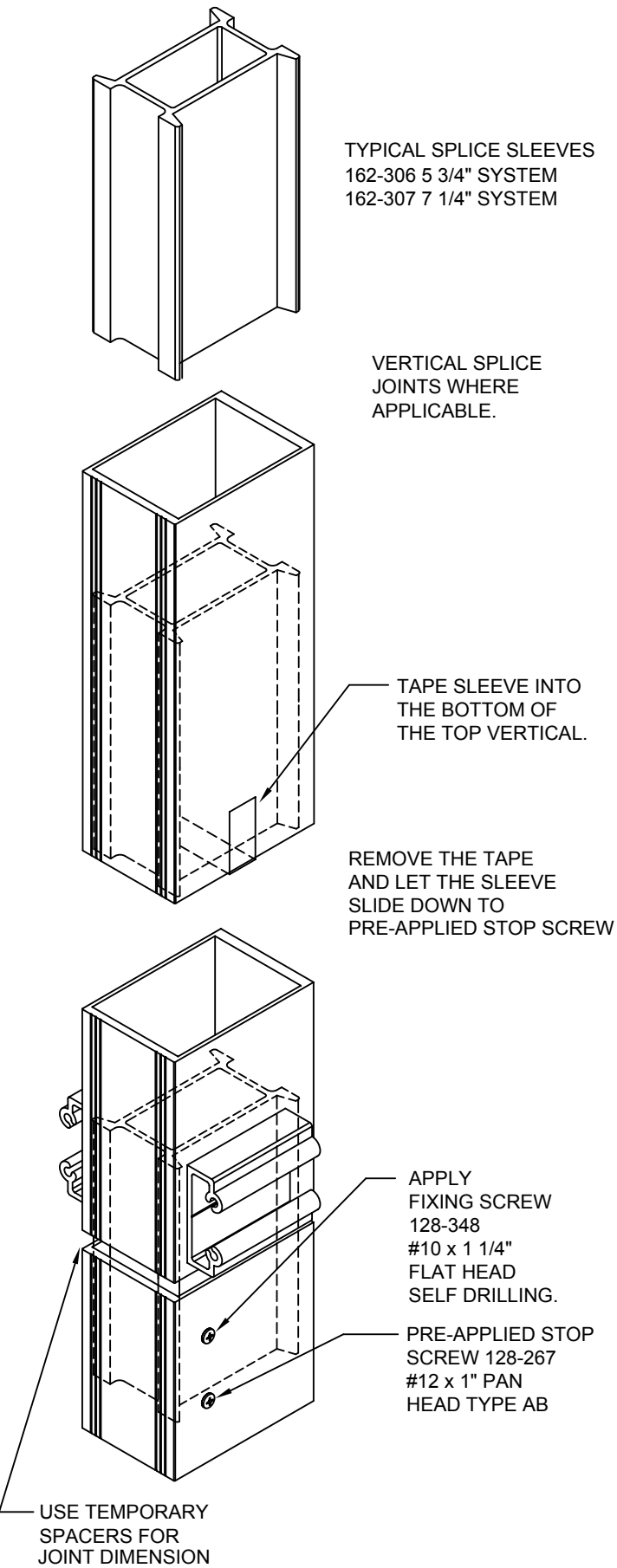
Product Engineering & Development

95503-07
12/07/07

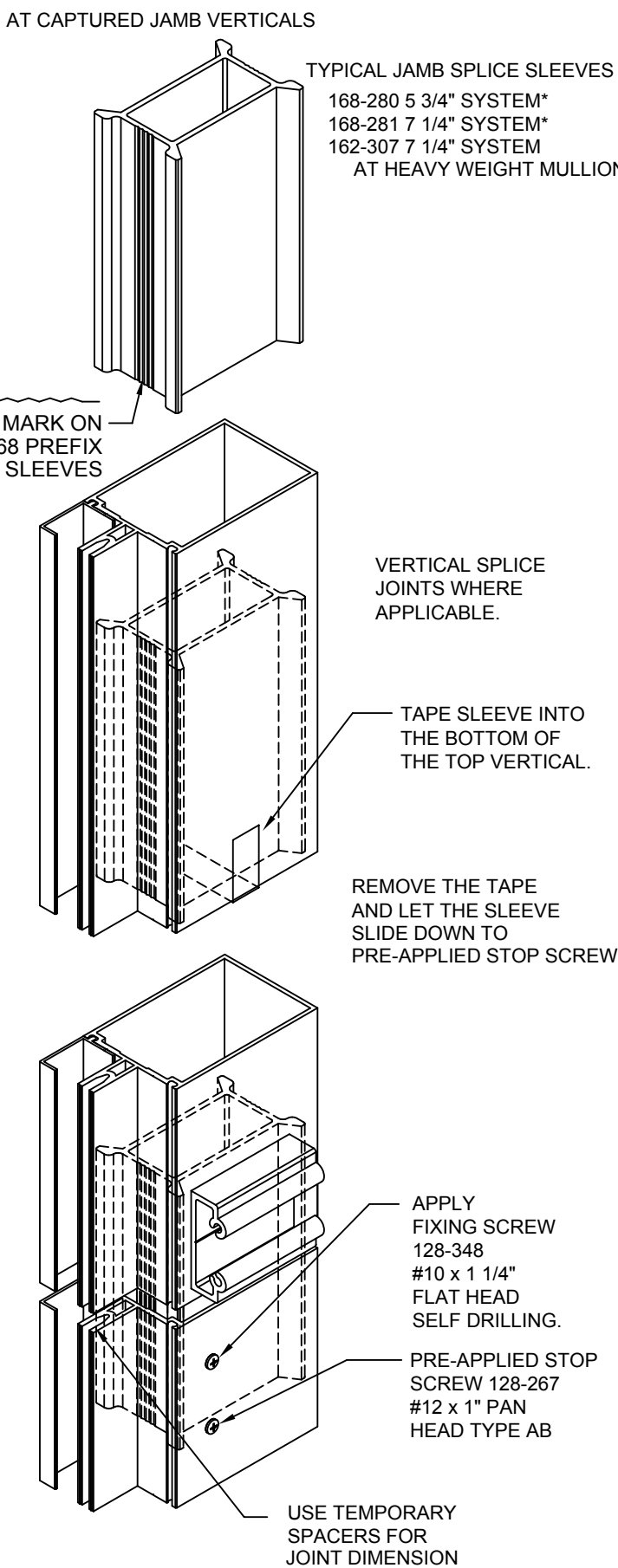
1600 L · R
SSG
INSTALLATION
INSTRUCTIONS

168971 (SHEET 03 OF 15)

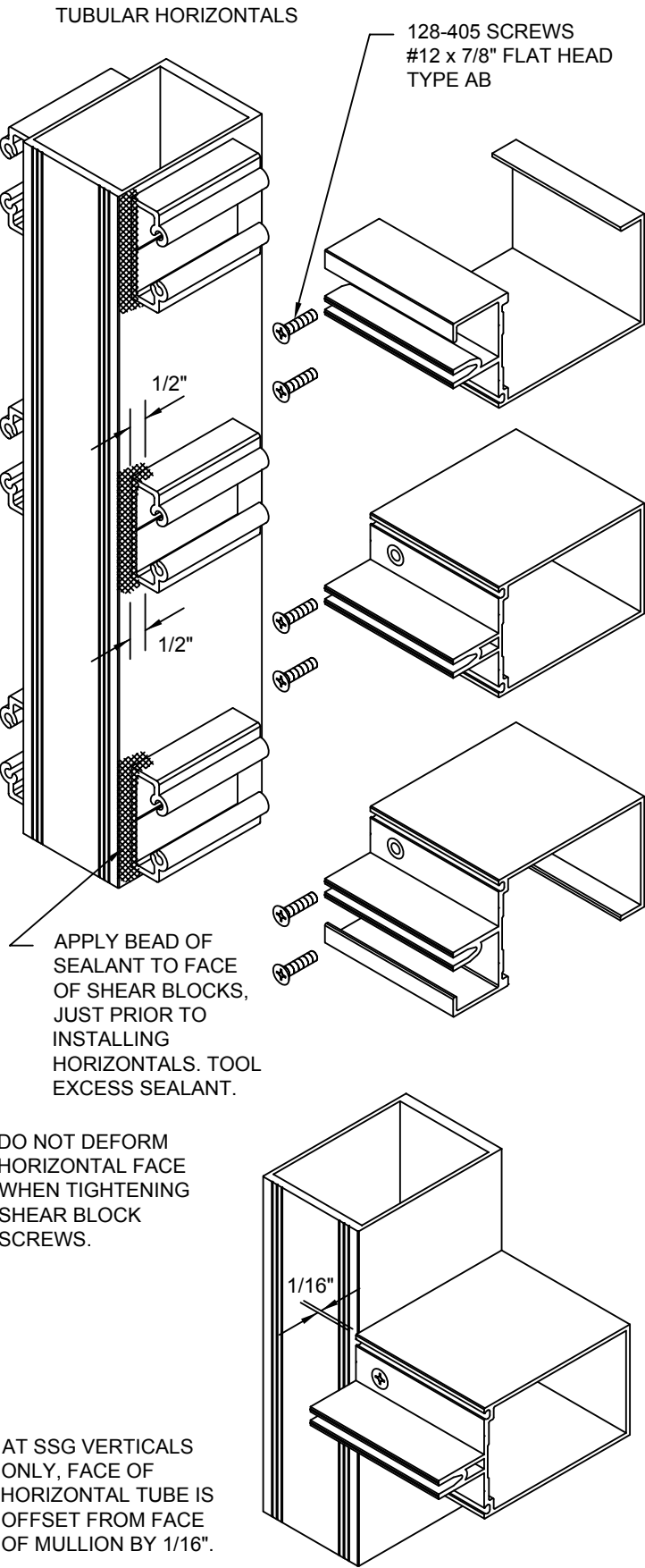
INSTALL VERTICAL
MULLIONS



INSTALL VERTICAL
MULLIONS



INSTALL HEAD/SILL
AND INTERMEDIATE
HORIZONTALS

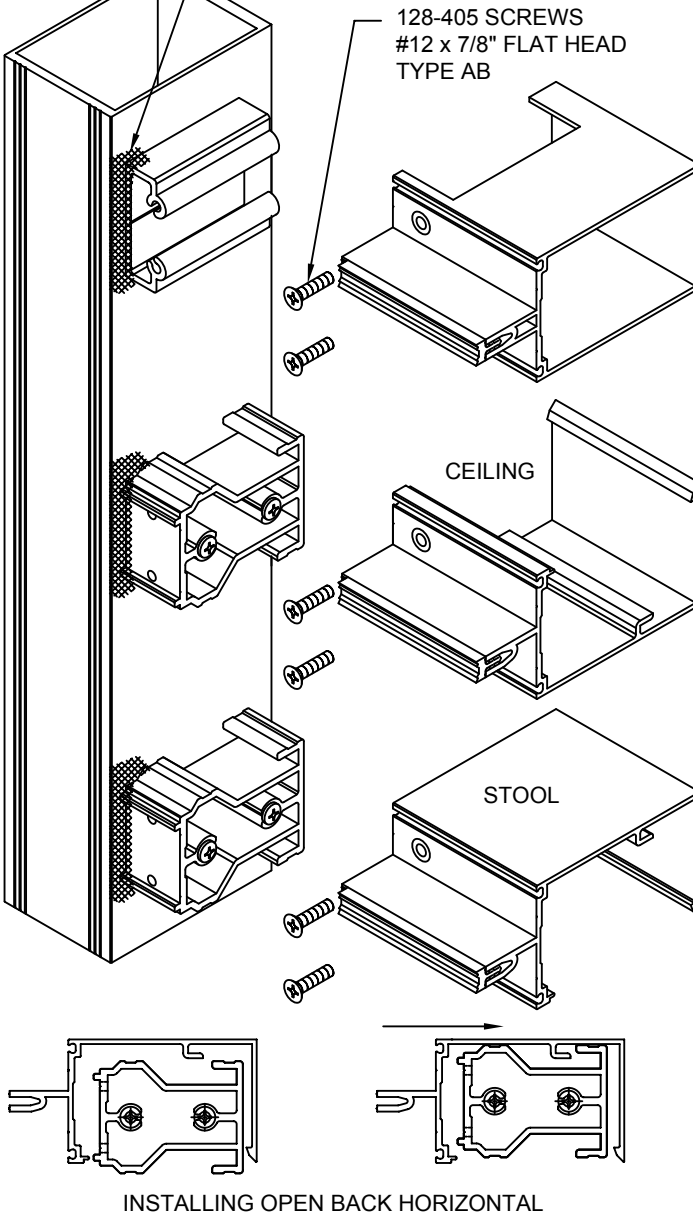


THESE DRAWINGS ARE THE SOLE AND EXCLUSIVE PROPERTY OF KAWNEER AND CONTAIN SENSITIVE, PRIVILEGED OR CONFIDENTIAL INFORMATION WHICH MAY BE USED ONLY FOR ITS BENEFIT. THE DISCLOSURE OF THESE DRAWINGS TO UNAUTHORIZED PERSONS IS STRICTLY PROHIBITED. THIS DOCUMENT AND ALL COPIES MUST BE RETURNED UPON DEMAND.
© COPYRIGHT KAWNEER COMPANY, INC., 2004

INSTALL INTERMEDIATE HORIZONTALS

OPEN BACK HORIZONTALS AND LAST BAY HORIZONTALS. FILLER AVAILABLE WHEN OPEN BACK IS EXPOSED AND AT EYE LEVEL. NOTE LOCATION OF FLAT SIDE OF TONGUE.

JUST PRIOR TO INSTALLING HORIZONTALS, APPLY A BEAD OF SEALANT TO FACE OF SHEAR BLOCKS. TOOL EXCESS SEALANT.



Product Engineering & Development

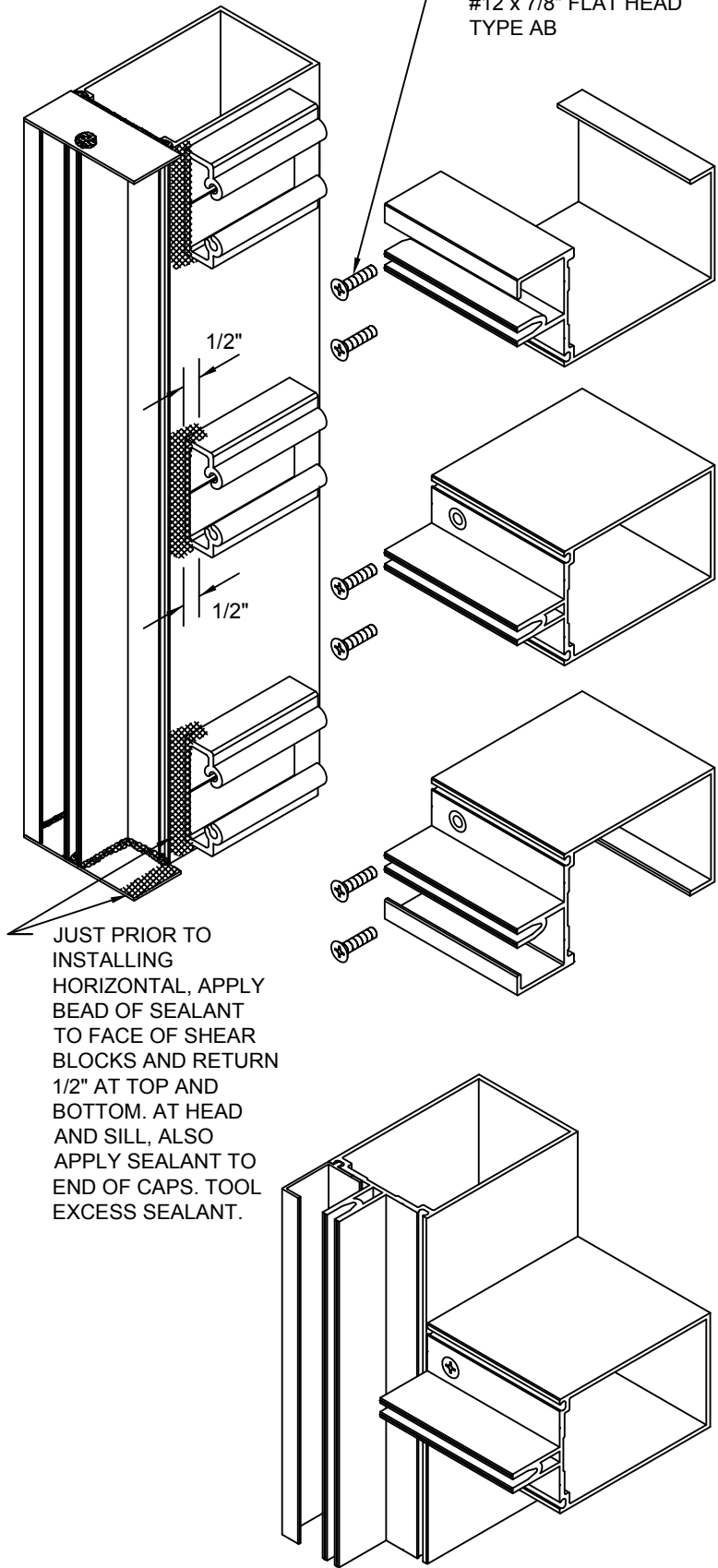
95503-07
12/07/07

1600 L · R
SSG
INSTALLATION
INSTRUCTIONS

INSTALL HEAD/SILL
AND INTERMEDIATE
HORIZONTALS

AT CAPTURED JAMB VERTICALS

128-405 SCREWS
#12 x 7/8" FLAT HEAD
TYPE AB

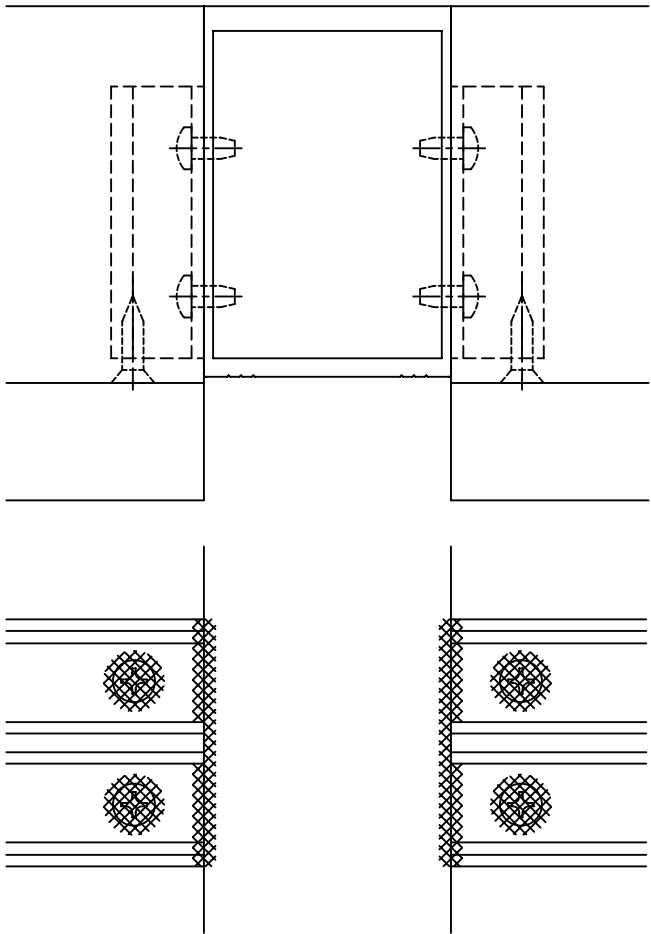


JUST PRIOR TO
INSTALLING
HORIZONTAL, APPLY
BEAD OF SEALANT
TO FACE OF SHEAR
BLOCKS AND RETURN
1/2" AT TOP AND
BOTTOM. AT HEAD
AND SILL, ALSO
APPLY SEALANT TO
END OF CAPS. TOOL
EXCESS SEALANT.

INSTALL SPANDREL
ADAPTERS WHERE
APPLICABLE

JUST BEFORE INSTALLING SPANDREL
ADAPTERS, FACE SEAL JOINTS AT ALL 4
CORNERS AND SEAL SCREW HEADS.

ALL SURFACES AND GROOVES MUST BE
CLEANED PER THE SEALANT MANUFACTURER'S
RECOMMENDATIONS.

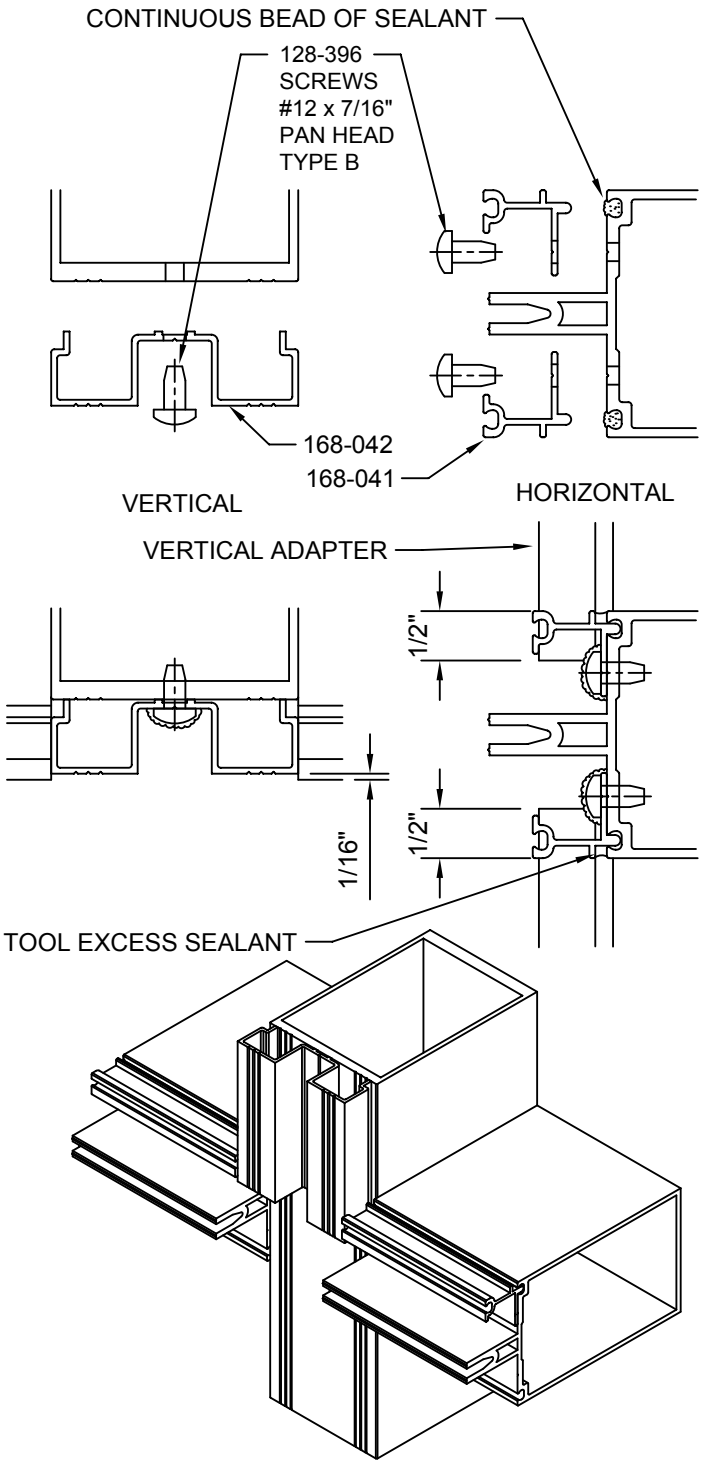


INSTALL SPANDREL
ADAPTERS WHERE
APPLICABLE

APPLY A CONTINUOUS LINE OF SEALANT AT VERTICAL AND
HORIZONTAL GLAZING REGLETS ON ALL SIDES OF LITE.

ATTACH 168-041 SPANDREL ADAPTERS. MATCH DRILL .185
DIA. (#13 DRILL) HOLES. APPLY SEALANT IN HOLES AND
FASTEN WITH 128-396 SCREWS. TOOL EXCESS SEALANT
AND SEAL OVER FASTENER HEADS.

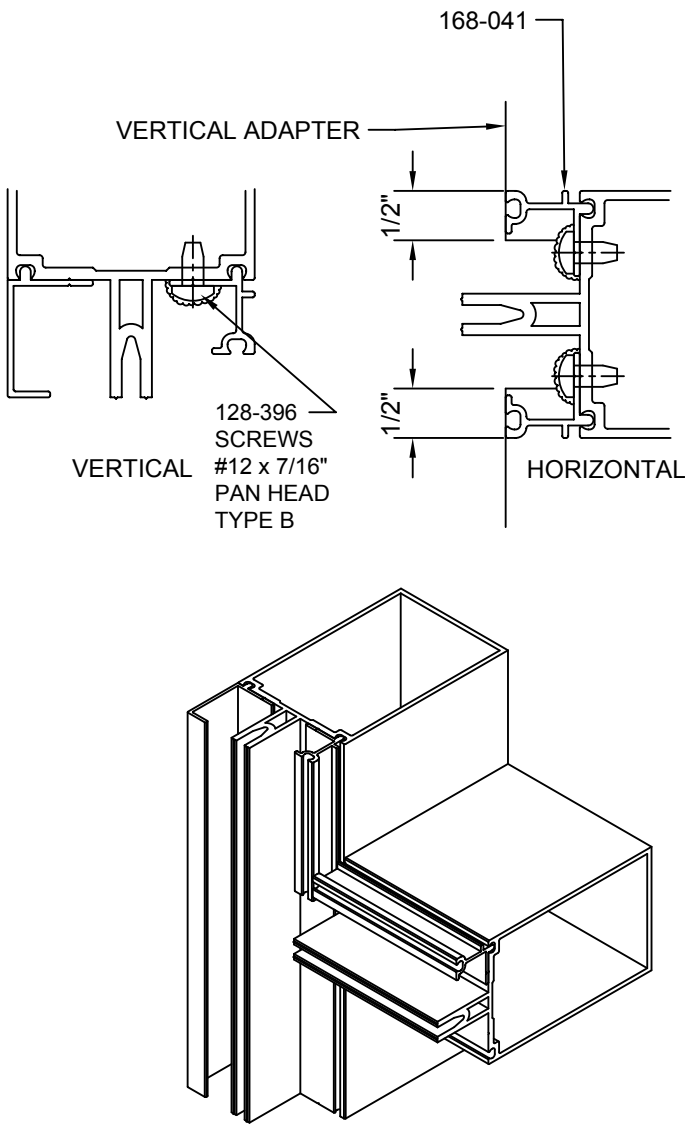
ATTACH 168-042 VERTICAL SPANDREL ADAPTERS. MATCH
DRILL .191 DIA. (#11 DRILL) HOLES. APPLY SEALANT IN
HOLES AND FASTEN WITH 128-396 SCREWS. SEAL OVER
FASTENER HEADS.



THESE DRAWINGS ARE THE SOLE AND EXCLUSIVE PROPERTY OF KAWNEER AND CONTAIN
SENSITIVE, PRIVILEGED OR CONFIDENTIAL INFORMATION WHICH MAY BE USED ONLY FOR ITS
BENEFIT. THE DISCLOSURE OF THESE DRAWINGS TO UNAUTHORIZED PERSONS IS STRICTLY
PROHIBITED. THIS DOCUMENT AND ALL COPIES MUST BE RETURNED UPON DEMAND.
© COPYRIGHT KAWNEER COMPANY, INC., 2004

INSTALL SPANDREL
ADAPTERS WHERE
APPLICABLE

AT JAMB VERTICALS, ATTACH 168-041 SPANDREL
ADAPTERS. MATCH DRILL .185 DIA. (#13 DRILL)
HOLES. APPLY SEALANT IN HOLES AND FASTEN
WITH 128-396 SCREWS. SEAL OVER FASTENER
HEADS.



Product Engineering & Development

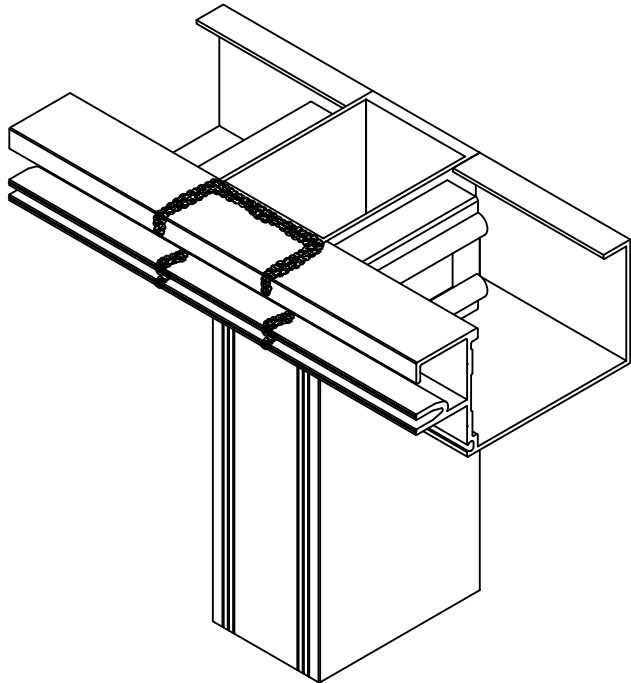
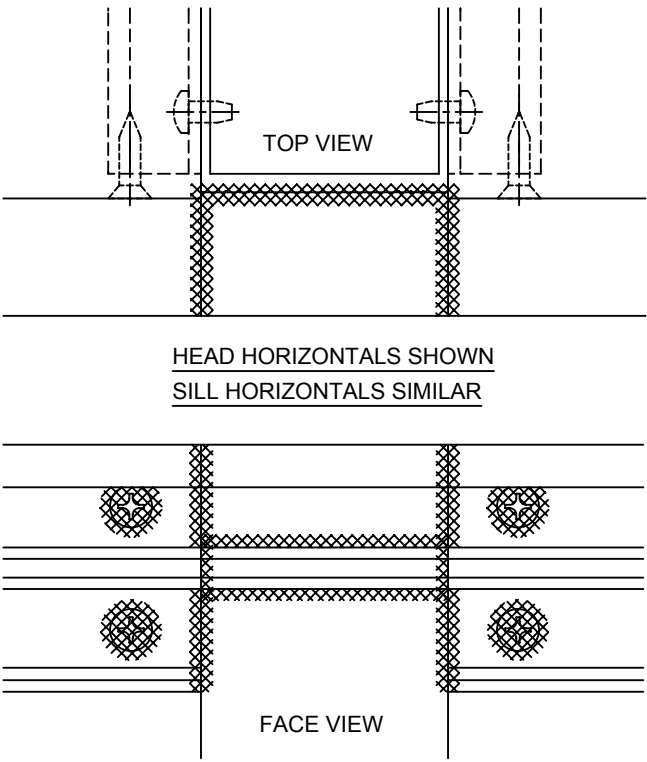
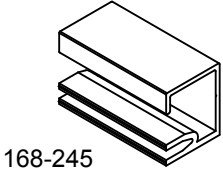
95503-07
12/07/07

1600 L · R
SSG
INSTALLATION
INSTRUCTIONS

INSTALL PERIMETER JOINT PLUGS
AND HORIZONTAL THERMAL BREAK

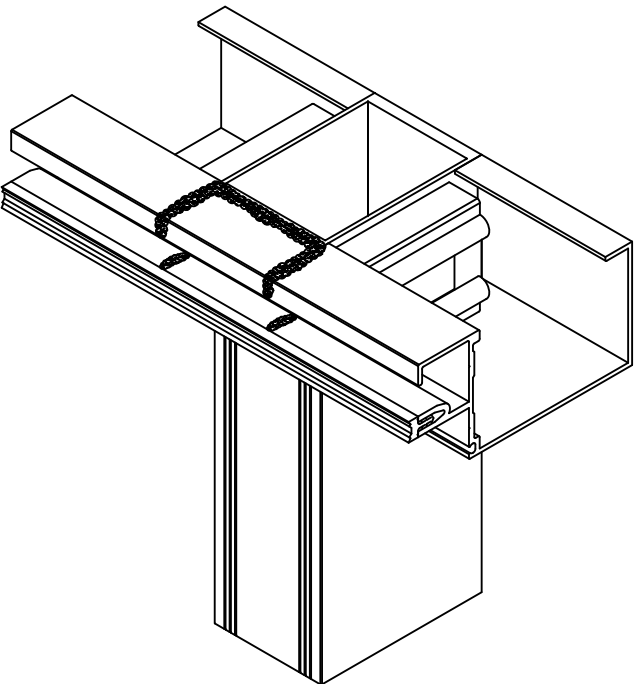
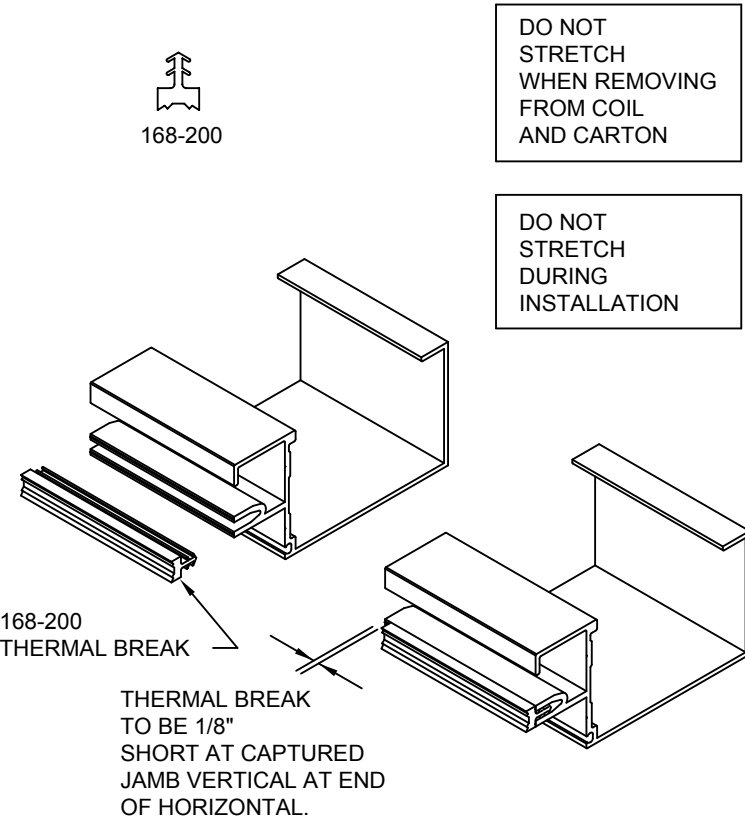
JUST BEFORE INSTALLING JOINT PLUGS, FACE SEAL JOINTS AT ALL 4 CORNERS AND SEAL SCREW HEADS. APPLY SEALANT AT ENDS AND BACK OF 168-245 PERIMETER JOINT PLUG. ALIGN PLUG WITH TONGUE OF HORIZONTALS AND TOOL SEALANT AT ALL EDGES. ALL JOINTS MUST BE SEALED COMPLETELY.

ALL SURFACES AND GROOVES MUST BE CLEANED PER THE SEALANT MANUFACTURER'S RECOMMENDATIONS.



INSTALL PERIMETER JOINT PLUGS
AND HORIZONTAL THERMAL BREAK

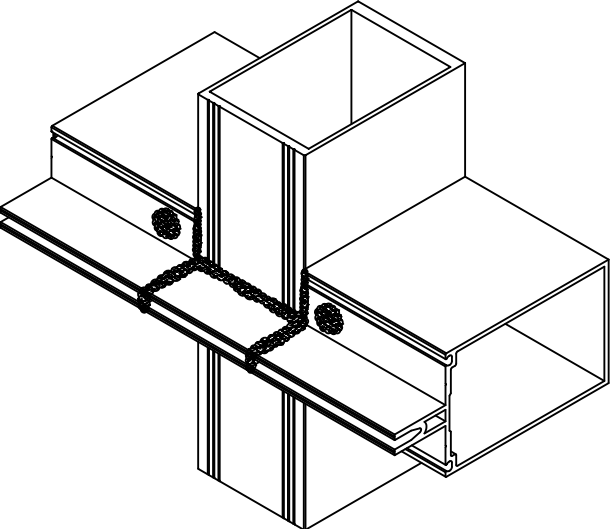
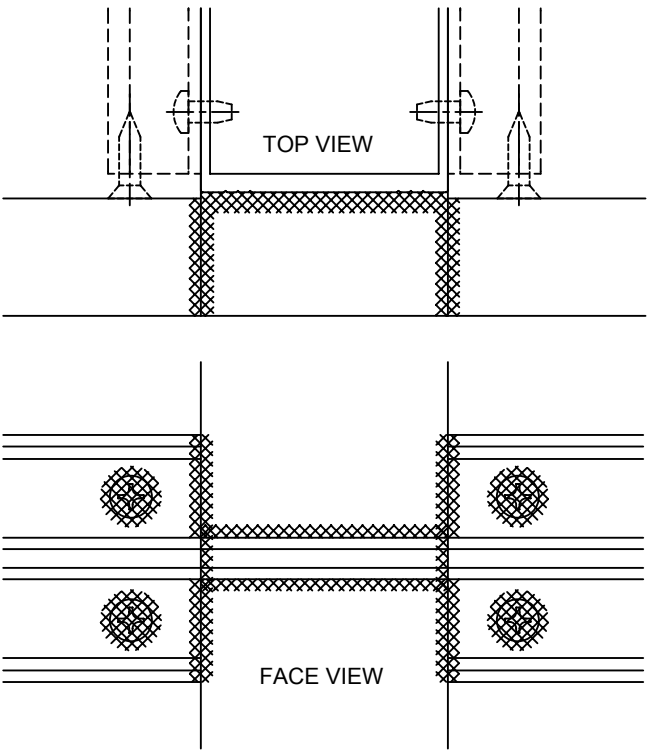
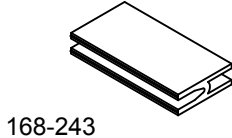
RUN 168-200 THERMAL BREAK CONTINUOUS ACROSS ELEVATION. THERMAL BREAK WILL HOLD JOINT PLUGS IN PLACE WHILE SILICONE CURES.



INSTALL INTERMEDIATE JOINT PLUGS
AND HORIZONTAL THERMAL BREAK

JUST BEFORE INSTALLING JOINT PLUGS, FACE SEAL JOINTS AT ALL 4 CORNERS AND SEAL SCREW HEADS. APPLY SEALANT AT ENDS AND BACK OF 168-243 JOINT PLUG. ALIGN PLUG WITH TONGUE OF HORIZONTALS AND TOOL SEALANT AT ALL EDGES. ALL JOINTS MUST BE SEALED COMPLETELY.

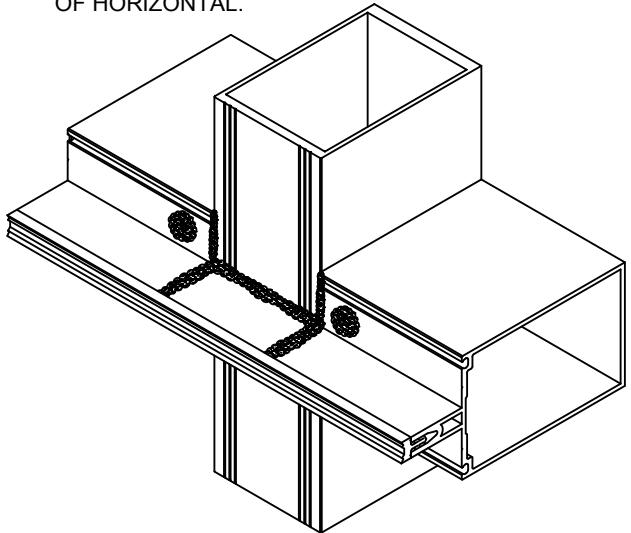
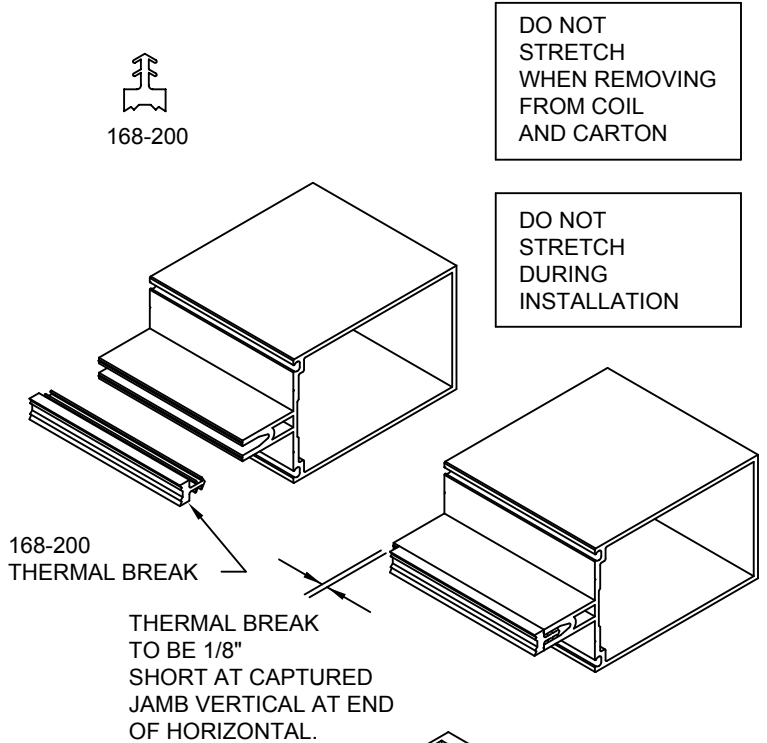
ALL SURFACES AND GROOVES MUST BE CLEANED PER THE SEALANT MANUFACTURER'S RECOMMENDATIONS.



THESE DRAWINGS ARE THE SOLE AND EXCLUSIVE PROPERTY OF KAWNEER AND CONTAIN SENSITIVE, PRIVILEGED OR CONFIDENTIAL INFORMATION WHICH MAY BE USED ONLY FOR ITS BENEFIT. THE DISCLOSURE OF THESE DRAWINGS TO UNAUTHORIZED PERSONS IS STRICTLY PROHIBITED. THIS DOCUMENT AND ALL COPIES MUST BE RETURNED UPON DEMAND.
© COPYRIGHT KAWNEER COMPANY, INC., 2004

INSTALL INTERMEDIATE JOINT PLUGS
AND HORIZONTAL THERMAL BREAK

RUN 168-200 THERMAL BREAK CONTINUOUS ACROSS ELEVATION. THERMAL BREAK WILL HOLD JOINT PLUGS IN PLACE WHILE SILICONE CURES.

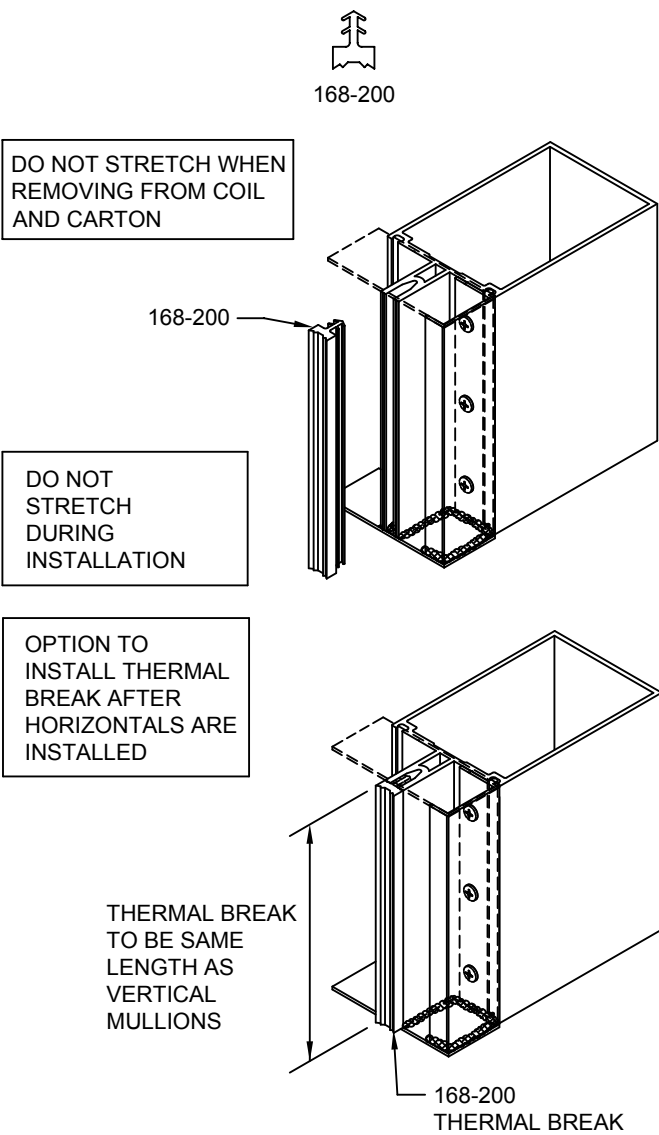


Product Engineering & Development

95503-07
12/07/07

1600 L·R
SSG
INSTALLATION
INSTRUCTIONS

INSTALL 168-200 THERMAL BREAK
AT JAMB VERTICALS



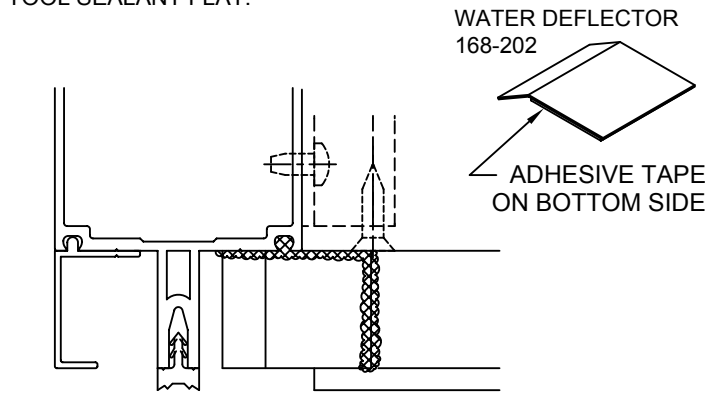
INSTALL WATER DEFLECTORS

AT CAPTURED JAMB VERTICALS

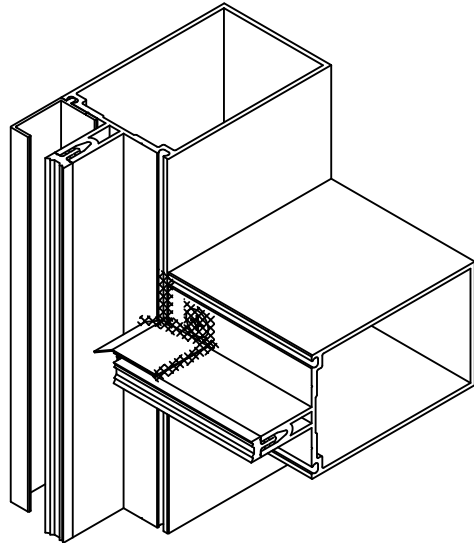
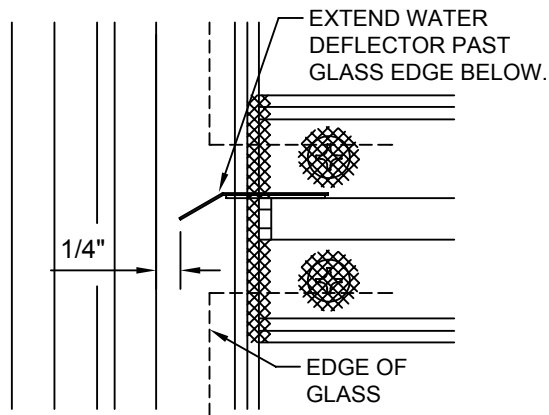
NOTE: WATER DEFLECTORS ARE NOT REQUIRED AT HORIZONTAL JOINTS ABOVE A SPLICE OR AT SILL HORIZONTALS.

REMOVE LINER ON 168-202 WATER DEFLECTOR AND APPLY TO TOP OF TONGUE ABOVE ALL INSULATED LITES OF GLASS. LOCATE END OF WATER DEFLECTOR APPROXIMATELY 1/4" FROM VERTICAL TONGUE. BACK EDGE OF WATER DEFLECTOR IS LOCATED AGAINST FACE OF HORIZONTAL TUBE.

SEAL ALONG EDGE OF WATER DEFLECTOR AND TOOL SEALANT FLAT.



AT INTERMEDIATE HORIZONTALS

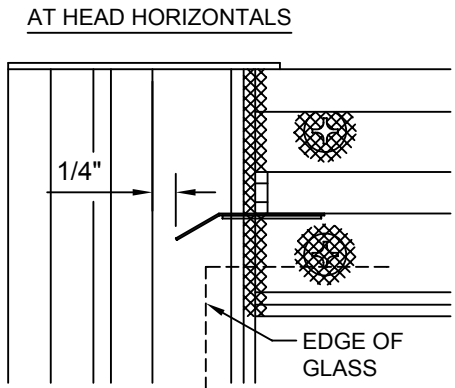
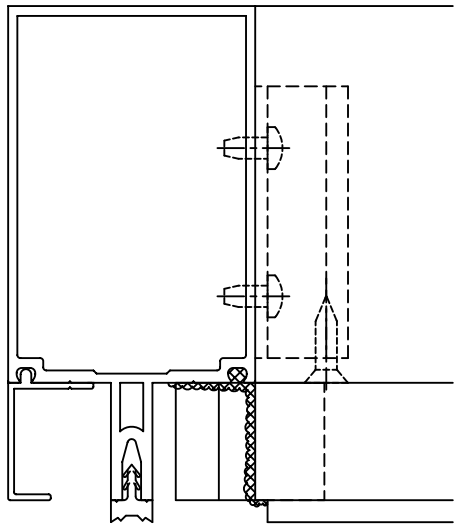
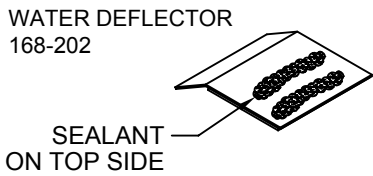


INSTALL WATER DEFLECTORS

AT CAPTURED JAMB VERTICALS

AT HEAD HORIZONTAL, APPLY SEALANT TO WATER DEFLECTOR ON TOP SIDE AND APPLY TO THE UNDER SIDE OF THE HORIZONTAL TONGUE.

SEAL ALONG BACK EDGE OF WATER DEFLECTOR AND ON TOP ALONG HORIZONTAL TONGUE. TOOL SEALANT.



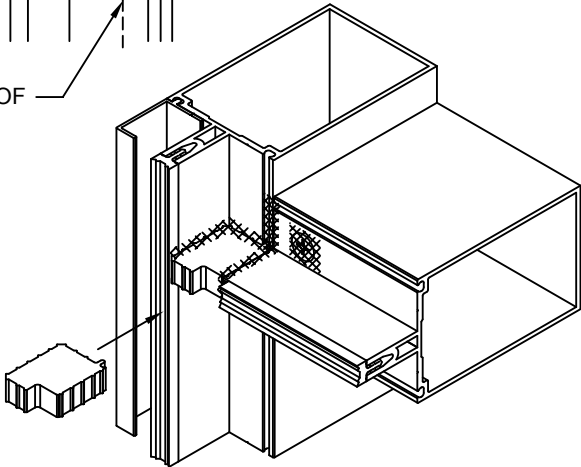
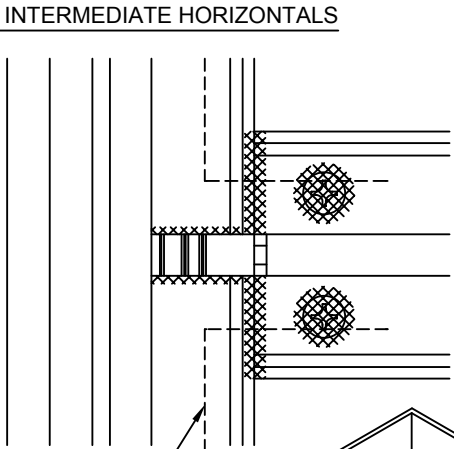
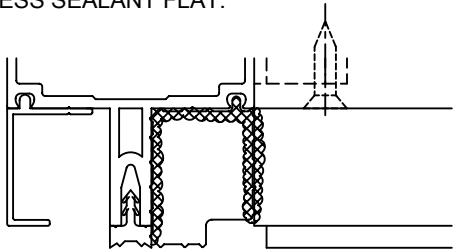
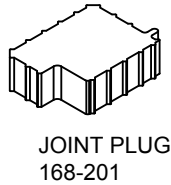
CONFIDENTIAL AND PROPRIETARY INFORMATION
KAWNEER COMPANY INC.

THESE DRAWINGS ARE THE SOLE AND EXCLUSIVE PROPERTY OF KAWNEER AND CONTAIN SENSITIVE, PRIVILEGED OR CONFIDENTIAL INFORMATION WHICH MAY BE USED ONLY FOR ITS BENEFIT. THE DISCLOSURE OF THESE DRAWINGS TO UNAUTHORIZED PERSONS IS STRICTLY PROHIBITED. THIS DOCUMENT AND ALL COPIES MUST BE RETURNED UPON DEMAND.
© COPYRIGHT KAWNEER COMPANY, INC., 2004

INSTALL JOINT PLUGS
WHERE APPLICABLE

JOINT PLUGS ARE REQUIRED AT HORIZONTAL JOINTS ABOVE A JAMB MULLION SPLICE ONLY.

CLEAN JOINT PER SEALANT MANUFACTURER'S RECOMMENDATIONS. APPLY SEALANT AROUND SIDES AND BACK OF JOINT PLUG AND AROUND JOINT IN FRAME. JOINT PLUG IS OVERSIZED FOR COMPRESSION FIT. APPLY TOP OF JOINT PLUG LEVEL WITH THE TOP OF THE TONGUE. TOOL EXCESS SEALANT FLAT.



Product Engineering & Development

95503-07
12/07/07

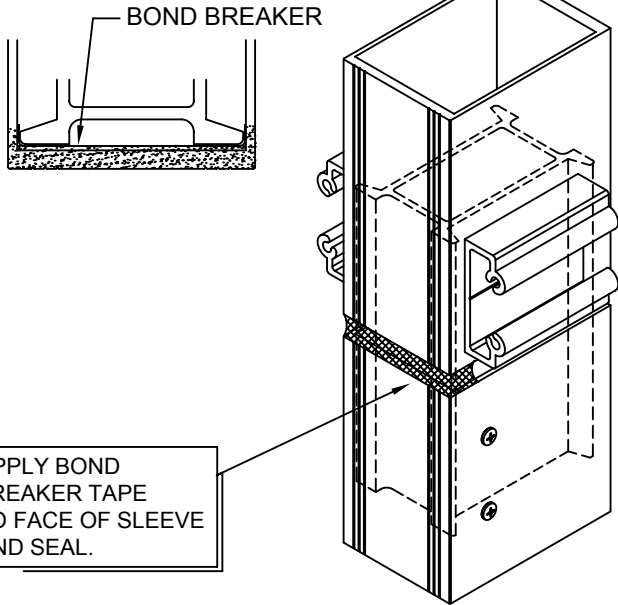
1600 L · R
SSG
INSTALLATION
INSTRUCTIONS

SEAL INTERIOR OF
VERTICAL SPLICE
JOINTS

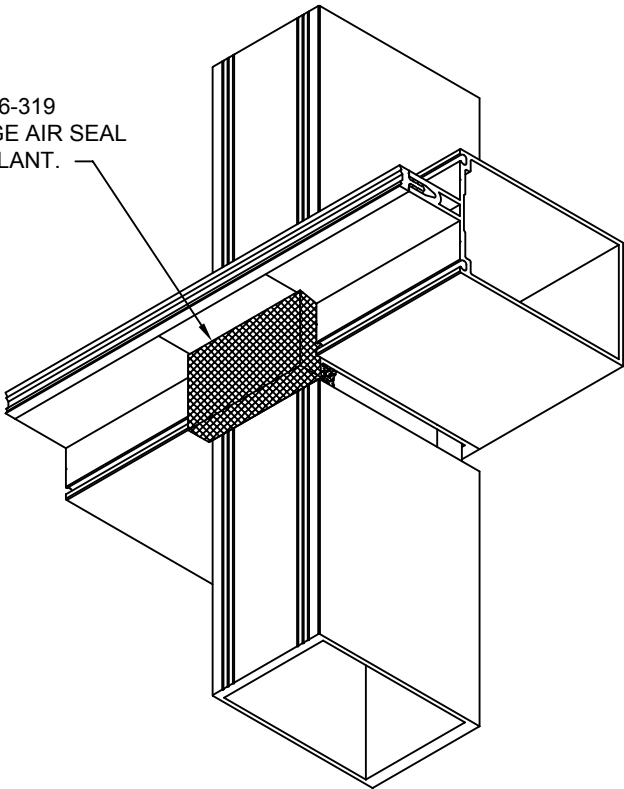
ALL SURFACES AND GROOVES MUST BE
CLEANED PER THE SEALANT MANUFACTURER'S
RECOMMENDATIONS.

TYPICAL AT ALL SPLICE JOINTS

NOTE: SEALANT MUST BE CAPABLE
OF ±50% MOVEMENT.



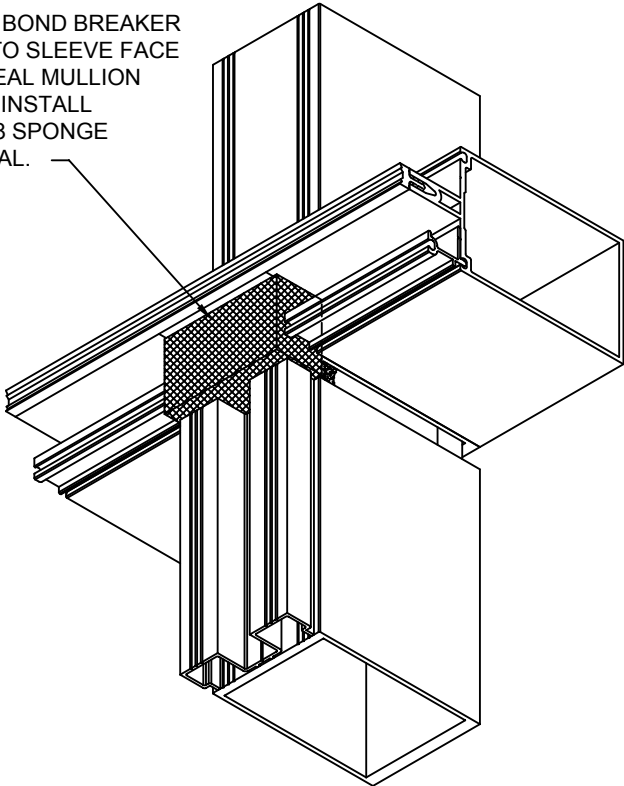
SET 426-319
SPONGE AIR SEAL
IN SEALANT.



SEAL INTERIOR OF
VERTICAL SPLICE
JOINTS

AT 1/4" INFILL

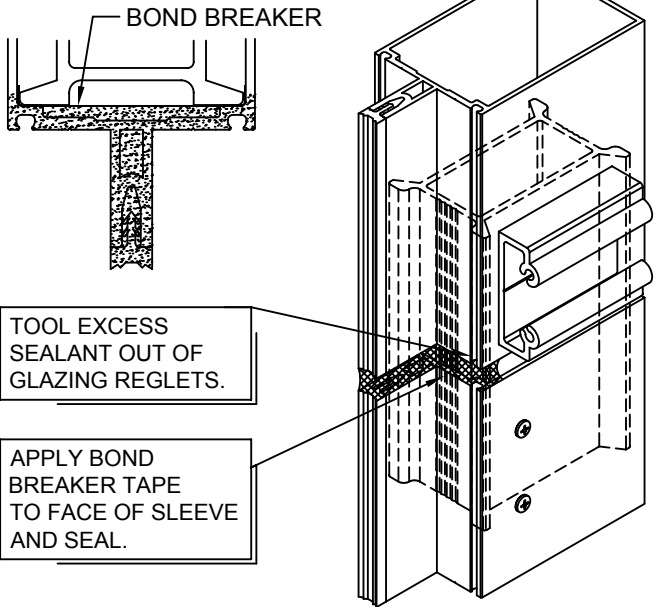
APPLY BOND BREAKER
TAPE TO SLEEVE FACE
AND SEAL MULLION
JOINT. INSTALL
426-318 SPONGE
AIR SEAL.



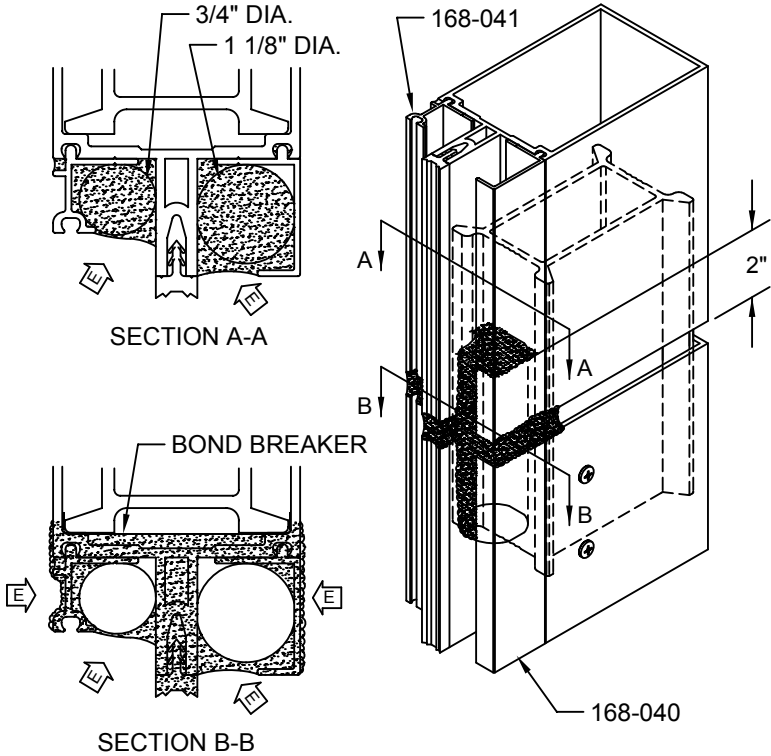
SEAL INTERIOR OF
JAMB VERTICAL SPLICE
JOINTS

ALL SURFACES AND GROOVES MUST BE CLEANED PER THE
SEALANT MANUFACTURER'S RECOMMENDATIONS.

NOTE: SEALANT MUST BE CAPABLE
OF ±50% MOVEMENT.



IN ADDITION TO THE TYPICAL SEAL, APPLY A 4" LONG PIECE OF
OPEN CELL BACKER ROD IN GLAZING POCKET. COMPLETELY
SEAL GLAZING POCKET AT TOP OF BACKER ROD. CONTINUE
SEAL DOWN FACE OF BACKER ROD BETWEEN PERIMETER
FILLER OR ADAPTER AND MULLION TONGUE. ALSO SEAL
BETWEEN PERIMETER FILLERS AND BETWEEN ADAPTERS AND
MARRY SEALANT TO MULLION JOINT SEAL.



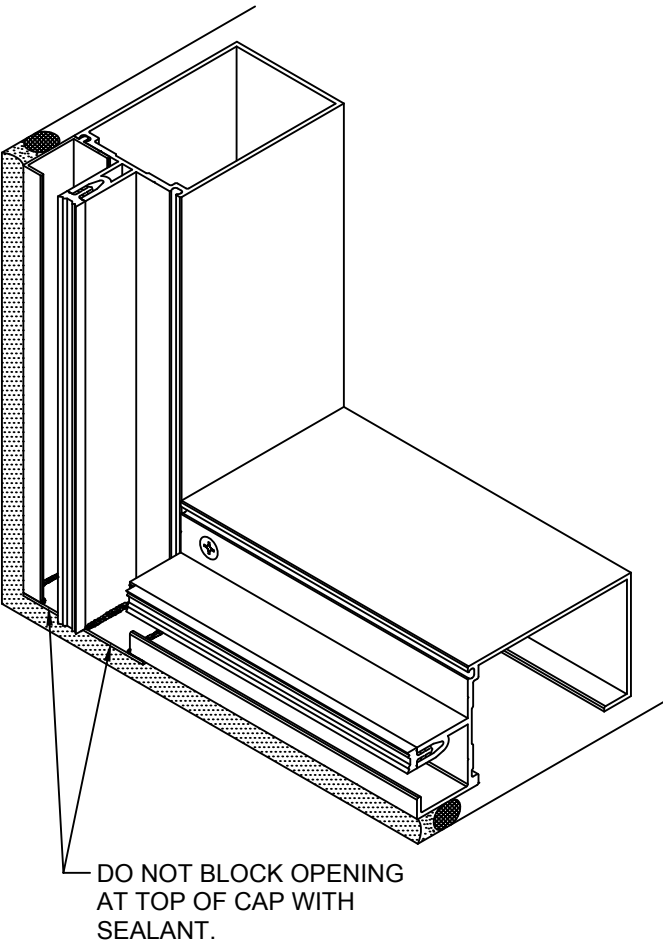
THESE DRAWINGS ARE THE SOLE AND EXCLUSIVE PROPERTY OF KAWNEER AND CONTAIN
SENSITIVE, PRIVILEGED OR CONFIDENTIAL INFORMATION WHICH MAY BE USED ONLY FOR ITS
BENEFIT. THE DISCLOSURE OF THESE DRAWINGS TO UNAUTHORIZED PERSONS IS STRICTLY
PROHIBITED. THIS DOCUMENT AND ALL COPIES MUST BE RETURNED UPON DEMAND.
© COPYRIGHT KAWNEER COMPANY, INC., 2004

INSTALL PERIMETER SEAL

ALL SURFACES AND GROOVES MUST BE
CLEANED PER THE SEALANT MANUFACTURER'S
RECOMMENDATIONS.

APPLY BACKER ROD AND SEAL. TOOL SEALANT.

PRIOR TO GLAZING, INSPECT ALL SEALS AND
REPAIR ANY THAT MAY BE SUSPECT.



Product Engineering & Development

95503-07
12/07/07

1600 L · R
SSG
INSTALLATION
INSTRUCTIONS

INSTALL INTERIOR
GLAZING GASKETS

GASKETS SHOULD BE INSTALLED JUST PRIOR TO GLASS TO AVOID CONTAMINATION BY JOB SITE DEBRIS. GASKET GROOVES AND POCKETS SHOULD BE CLEAN.

IN TEMPERATURES COLDER THAN 50° F ARRANGEMENTS SHOULD BE MADE TO WARM GASKETS BEFORE INSTALLATION. THIS WILL PREVENT EXCESSIVE GLAZING PRESSURE ON THE GLASS DUE TO COLD, STIFF RUBBER GASKETS.

GASKETS CAN BECOME DEFORMED DURING STORAGE IN CARTONS. THEY SHOULD BE REMOVED FROM CARTONS SEVERAL HOURS PRIOR TO GLAZING AND LAID FLAT OR HUNG TO ALLOW RECOVERY OF CORRECT SHAPE. TEMPERATURES SHOULD BE AT LEAST 50° F TO ALLOW THIS.

VERTICAL GASKET INSTALLED LENGTH TO BE DAYLITE OPENING PLUS 1". HORIZONTAL GASKETINSTALLED LENGTH TO BE DAYLITE OPENING AND CUT LONG FOR SOME "CROWD-IN". GASKETS SHOULD NEVER BE " STRETCHED TO FIT".

HORIZONTAL GASKET "CROWD-IN" TO BE 1/8" PER FOOT UP TO 5"-0", 3/16" PER FOOT UP TO 8'-0", 1/4" PER FOOT OVER 8'-0".

AT CAPTURED VERTICALS AND HORIZONTALS

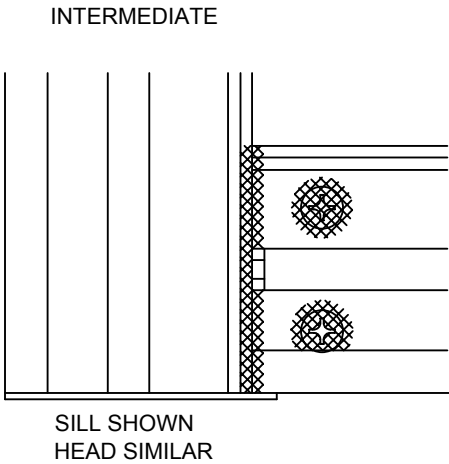
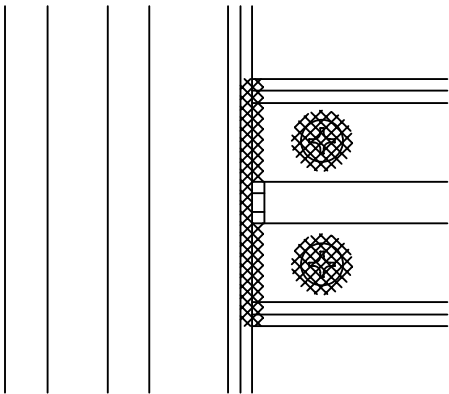
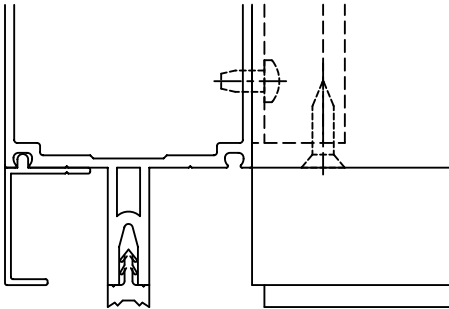
GROOVES HAVE BEEN ADDED TO THE GASKET TO DISTINGUISH IT FROM THE EXTERIOR GASKET. THE INTERIOR GASKET DART IS LOCATED IN A DIFFERENT POSITION THAN ON THE EXTERIOR GASKET. DO NOT USE EXTERIOR GASKET AT INTERIOR.



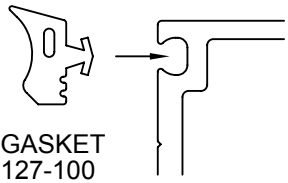
INSTALL INTERIOR
GLAZING GASKETS

JUST BEFORE INSTALLING INTERIOR GASKETS, FACE SEAL JOINTS AT ALL 4 CORNERS AND SEAL SCREW HEADS.

ALL SURFACES AND GROOVES MUST BE CLEANED PER THE SEALANT MANUFACTURER'S RECOMMENDATIONS.



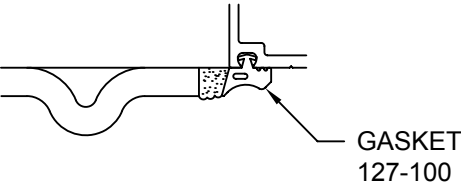
PUSH IN GASKET AS SHOWN. DO NOT USE EXTERIOR GASKET AT INTERIOR.



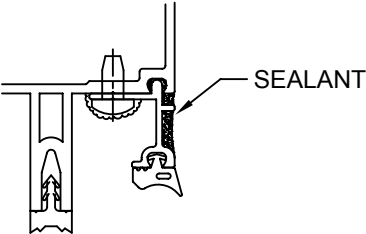
INSTALL INTERIOR
GLAZING GASKETS

SEAL ALL GASKET CORNERS COMPLETELY. AT CAPTURED MULLIONS, SLIDE HORIZONTAL GASKET BACK AS SHOWN BELOW AND APPLY SEALANT. TOOL EXCESS SEALANT.

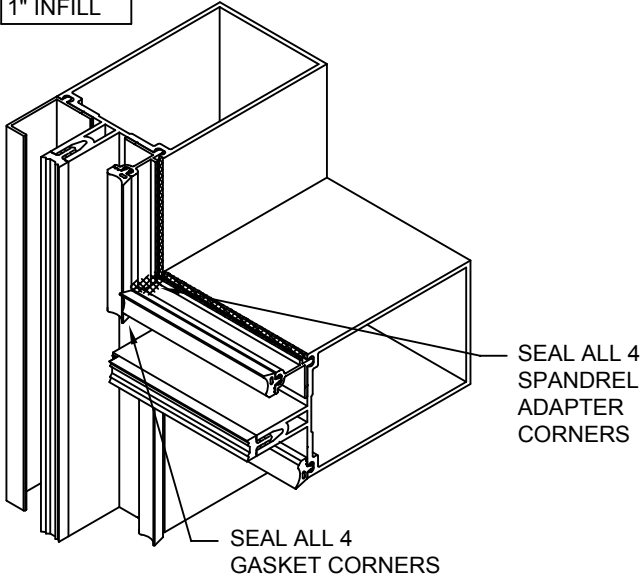
ALL SURFACES AND GROOVES MUST BE CLEANED PER THE SEALANT MANUFACTURER'S RECOMMENDATIONS.



SEAL ALL CORNERS OF SPANDREL ADAPTERS.



1/4" INFILL OVER 1" INFILL



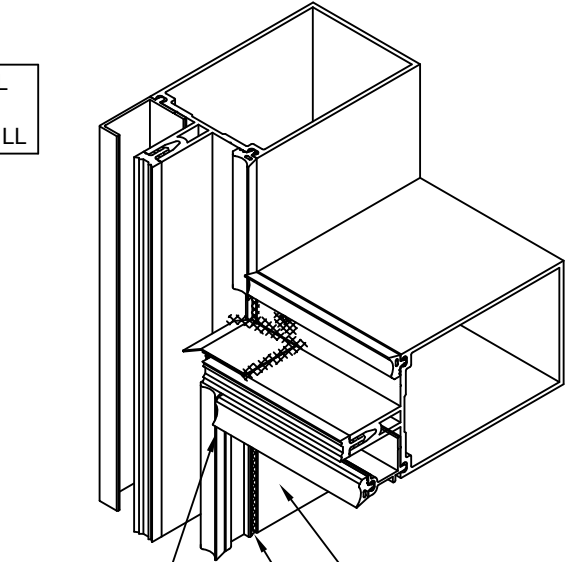
168971 (SHEET 09 OF 15)

CONFIDENTIAL AND PROPRIETARY INFORMATION
KAWNEER COMPANY INC.

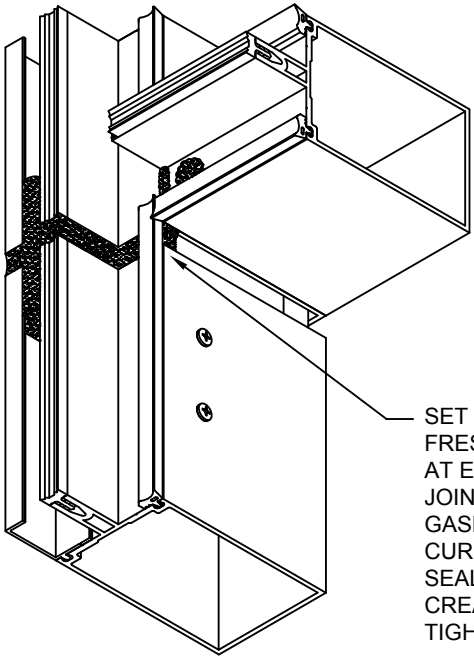
THESE DRAWINGS ARE THE SOLE AND EXCLUSIVE PROPERTY OF KAWNEER AND CONTAIN SENSITIVE, PRIVILEGED OR CONFIDENTIAL INFORMATION WHICH MAY BE USED ONLY FOR ITS BENEFIT. THE DISCLOSURE OF THESE DRAWINGS TO UNAUTHORIZED PERSONS IS STRICTLY PROHIBITED. THIS DOCUMENT AND ALL COPIES MUST BE RETURNED UPON DEMAND.
© COPYRIGHT KAWNEER COMPANY, INC., 2004

INSTALL INTERIOR
GLAZING GASKETS

1" INFILL OVER 1/4" INFILL



SEAL ALL 4 GASKET CORNERS
SEAL ALL 4 SPANDREL ADAPTER CORNERS
SEAL ADAPTER CONTINUOUS



AT MULLION SPLICE

SET GASKETS IN FRESH SEALANT AT EXPANSION JOINTS. TRIM GASKET DART OR CURED JOINT SEALANT TO CREATE AN AIR TIGHT SEAL.



Product Engineering & Development

95503-07
12/07/07

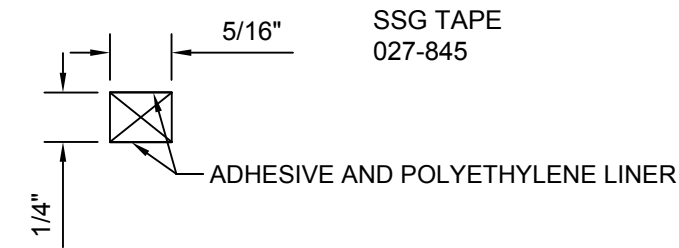
1600 L · R
SSG
INSTALLATION
INSTRUCTIONS

168971 (SHEET 09 OF 15)

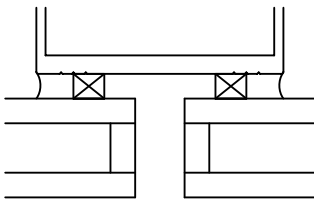
INSTALL INTERIOR
GLAZING GASKETS

AT STRUCTURAL GLAZED VERTICALS

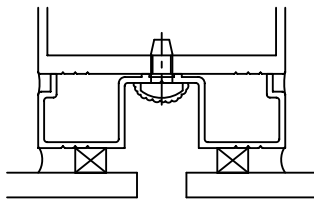
ALL SURFACES AND GROOVES MUST BE
CLEANED PER THE SEALANT MANUFACTURER'S
RECOMMENDATIONS.



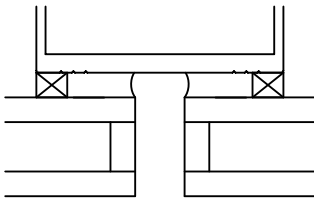
VERTICAL GASKETS TO RUN DAYLIGHT OPENING
PLUS 1/2" AT EACH END.



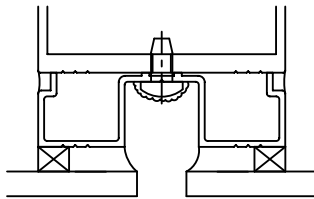
VISION AT INTERIOR
STRUCTURAL SEAL



SPANDREL AT INTERIOR
STRUCTURAL SEAL



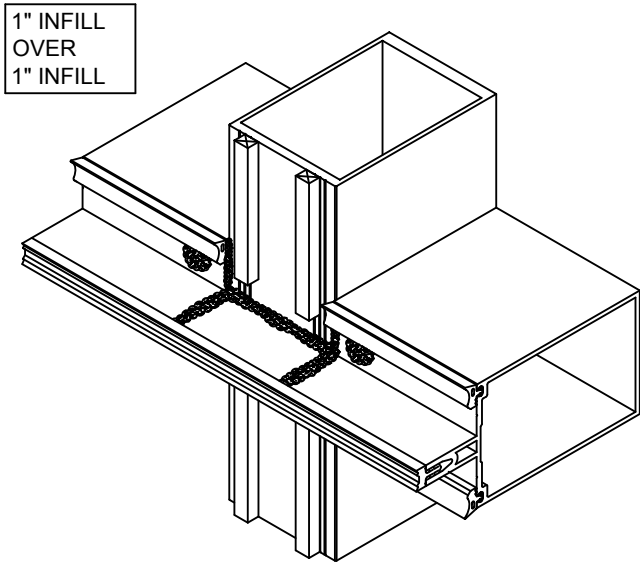
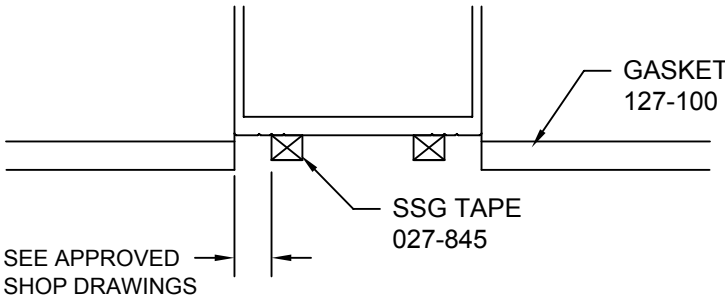
VISION AT EXTERIOR
STRUCTURAL SEAL



SPANDREL AT EXTERIOR
STRUCTURAL SEAL

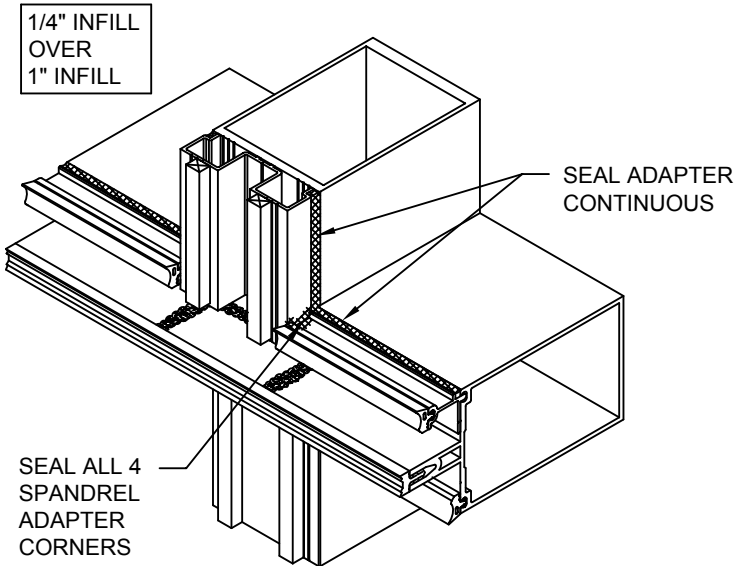
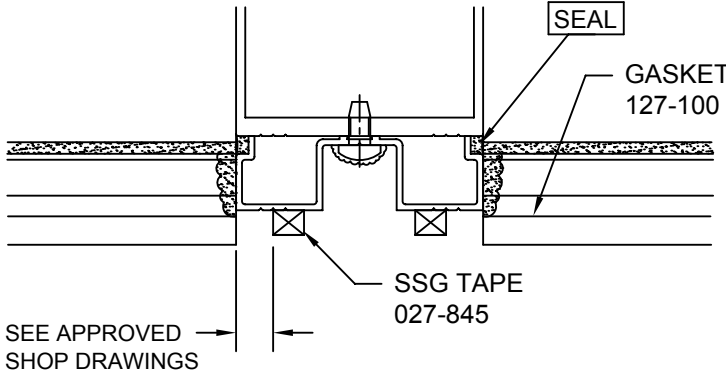
INSTALL INTERIOR
GLAZING GASKETS

APPLY 027-845 STRUCTURAL GLAZING TAPE.
REMOVE LINER ON ONE SIDE AND APPLY FIRMLY TO
FACE OF SSG VERTICAL.



INSTALL INTERIOR
GLAZING GASKETS

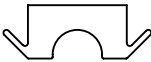
IN ADDITION TO APPLICATION OF 027-845 STRUCTURAL
GLAZING TAPE, APPLY A CONTINUOUS SEAL BETWEEN
VERTICAL AND ADAPTER. MARRY VERTICAL SEAL TO
HORIZONTAL ADAPTER SEAL AT ALL CORNERS OF LITE AND
SEAL CORNERS AS SHOWN.



THESE DRAWINGS ARE THE SOLE AND EXCLUSIVE PROPERTY OF KAWNEER AND CONTAIN
SENSITIVE, PRIVILEGED OR CONFIDENTIAL INFORMATION WHICH MAY BE USED ONLY FOR ITS
BENEFIT. THE DISCLOSURE OF THESE DRAWINGS TO UNAUTHORIZED PERSONS IS STRICTLY
PROHIBITED. THIS DOCUMENT AND ALL COPIES MUST BE RETURNED UPON DEMAND.
© COPYRIGHT KAWNEER COMPANY, INC., 2004

INSTALL SETTING
BLOCKS

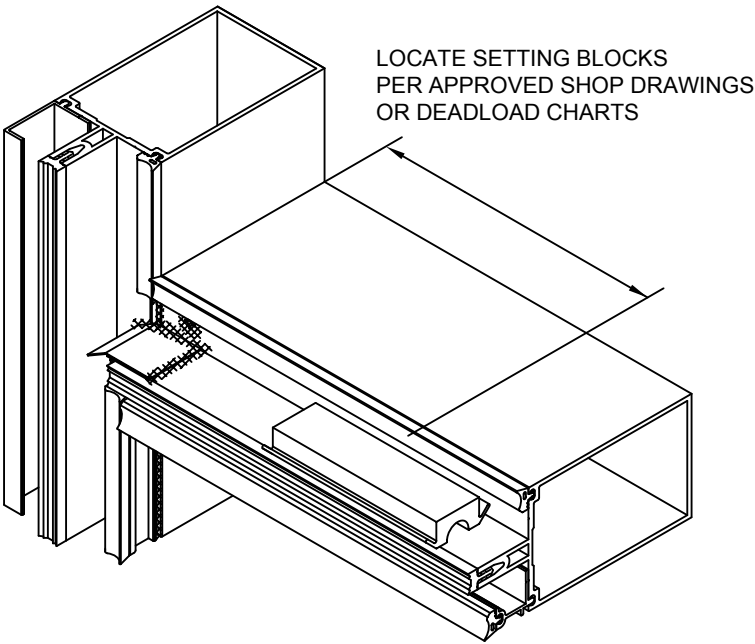
APPLICATION AT CAPTURED JAMB VERTICAL SHOWN,
STRUCTURAL GLAZED VERTICAL SIMILAR .



127-102 SETTING BLOCK

1" INFILL
OVER
1/4" INFILL

1" INFILL SHOWN
1/4" INFILL SIMILAR

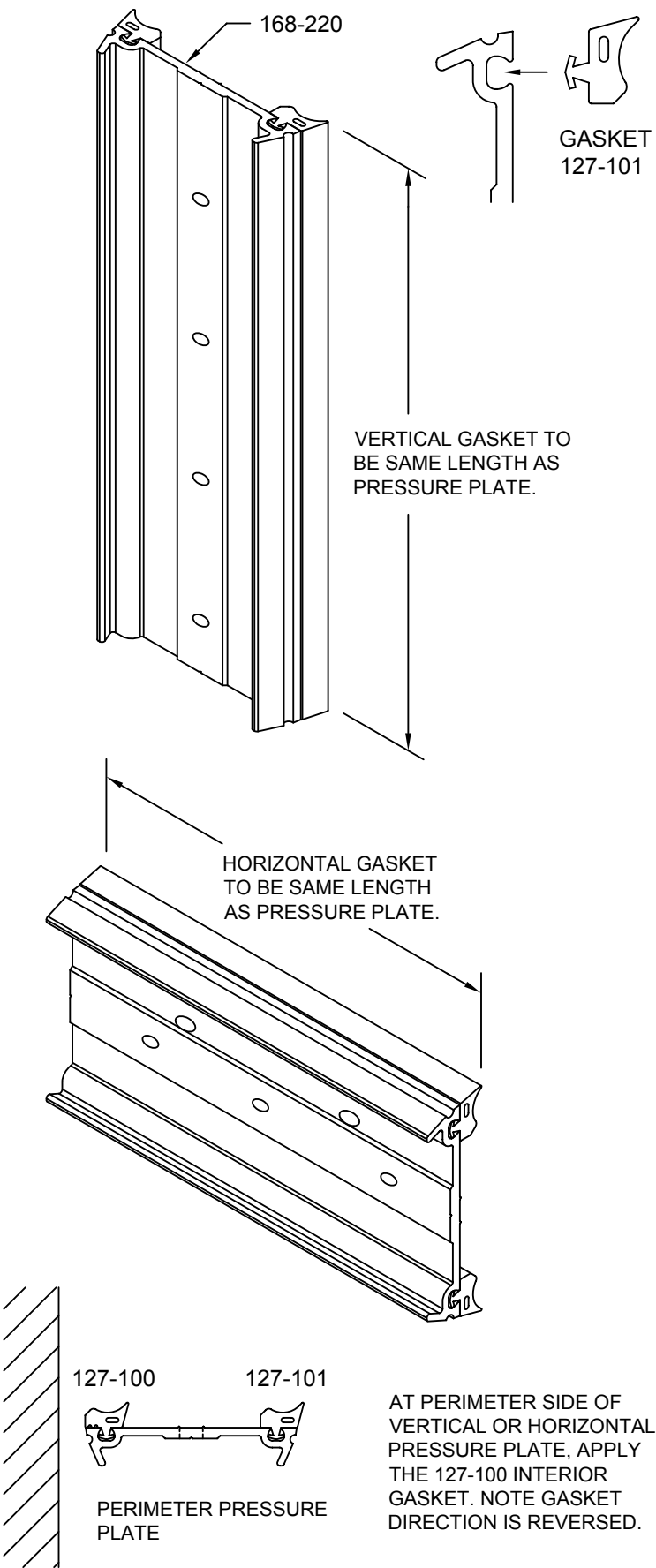


Product Engineering & Development

95503-07
12/07/07

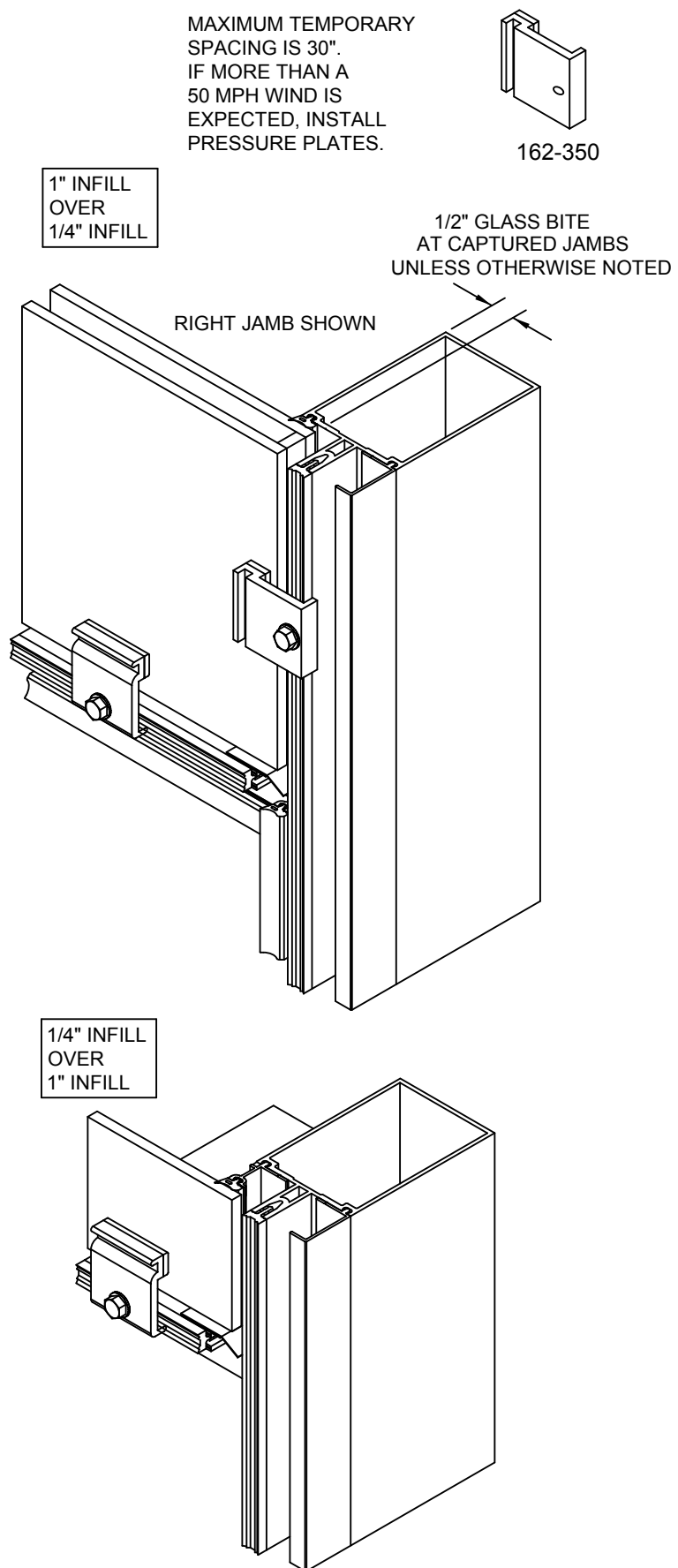
1600 L · R
SSG
INSTALLATION
INSTRUCTIONS

INSTALL EXTERIOR
GASKETS INTO
PRESSURE PLATES



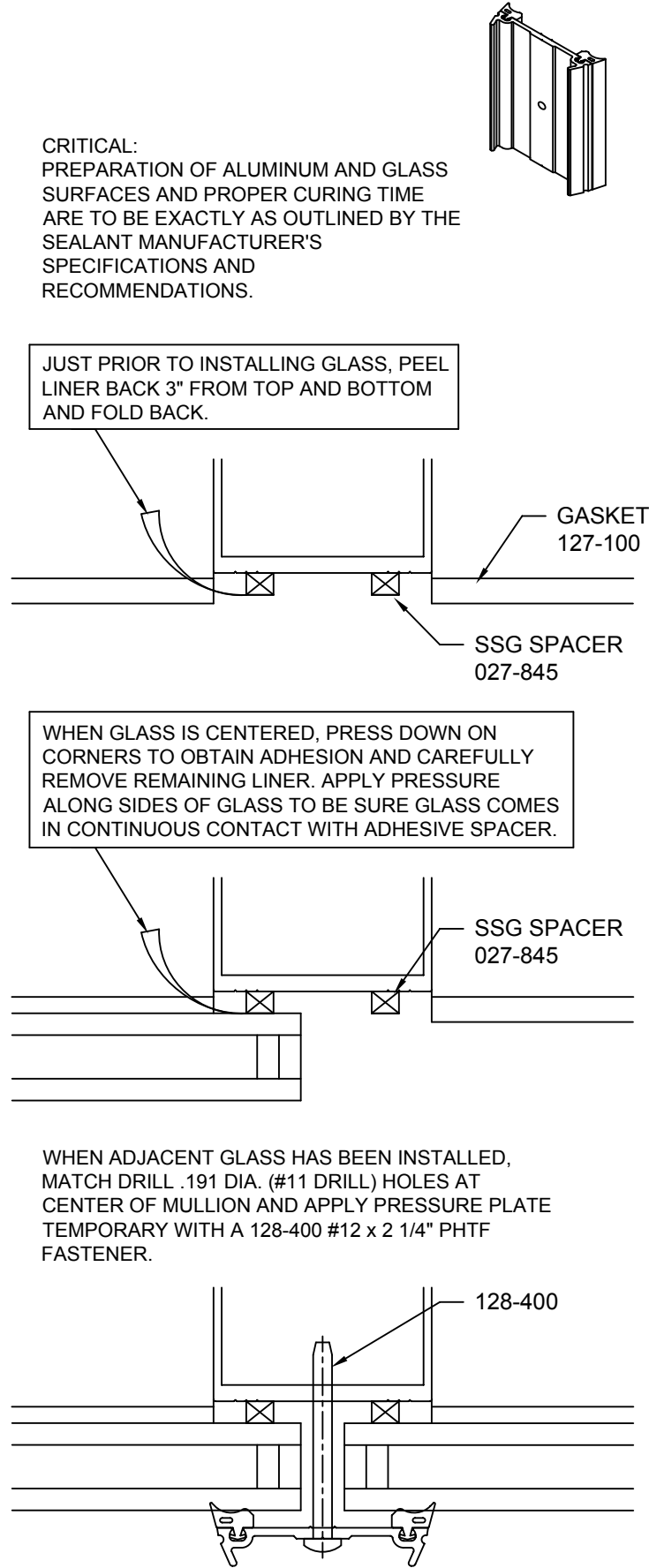
INSTALL GLASS

USE 162-350 GLAZING TEMPORARIES AS REQUIRED. APPLY WITH 128-520 SCREWS.



INSTALL GLASS

MAKE VERTICAL TEMPORARIES FROM THE 168-220 PRESSURE PLATE 4 INCHES LONG AND 127-101 GASKET AS SHOWN BELOW.

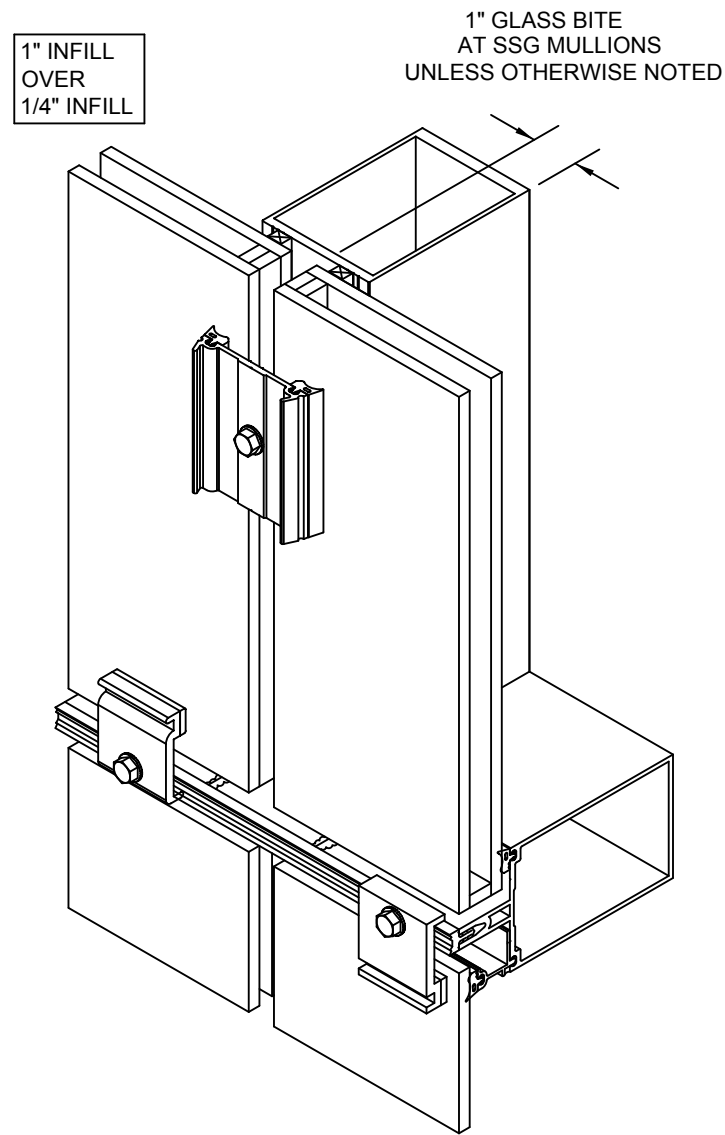


CONFIDENTIAL AND PROPRIETARY INFORMATION

KAWNEER COMPANY INC.

THESE DRAWINGS ARE THE SOLE AND EXCLUSIVE PROPERTY OF KAWNEER AND CONTAIN SENSITIVE, PRIVILEGED OR CONFIDENTIAL INFORMATION WHICH MAY BE USED ONLY FOR ITS BENEFIT. THE DISCLOSURE OF THESE DRAWINGS TO UNAUTHORIZED PERSONS IS STRICTLY PROHIBITED. THIS DOCUMENT AND ALL COPIES MUST BE RETURNED UPON DEMAND.
© COPYRIGHT KAWNEER COMPANY, INC., 2004

INSTALL GLASS



AT CORNERS AND SPLAYS, GLASS RETAINERS SHOULD BE MADE FROM A GOOD QUALITY HARDWOOD. THESE GLASS RETAINERS ARE NOT SUPPLIED BY KAWNEER.



Product Engineering & Development

95503-07
12/07/07

1600 L · R
SSG
INSTALLATION
INSTRUCTIONS

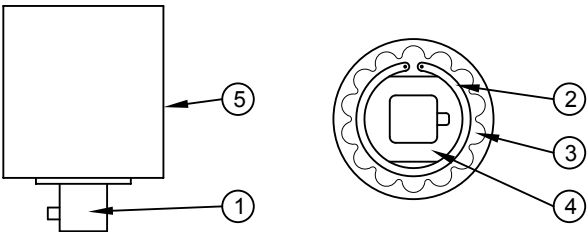
INSTALL EXTERIOR
PRESSURE PLATES



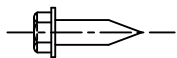
RECOMMEND USING TORQUE LIMIT
TOOL 162-399 SEE NOTE.

HOW TO SET TORQUE LIMIT

1. ATTACH ANY CALIBRATED TORQUE INDICATOR TO OUTPUT STUB (1) AND DETERMINE PRESENT TORQUE SETTING WHILE HOLDING THE BODY (5), OR VICE-VERSA.
2. REMOVE SNAP RING (2) AND LOCKING PLATE (3).
3. ADJUST NUT (4) WITH OPEN-END WRENCH : CLOCKWISE TO INCREASE TORQUE, COUNTER- CLOCKWISE TO DECREASE TORQUE.
4. OBTAIN NEW TORQUE READING WITH THE CALIBRATED TORQUE INDICATOR. REPEAT PRECEDING STEP IF MORE ADJUSTMENT IS NECESSARY TO REACH DESIRED LIMIT.
5. REPLACE LOCKING PLATE INTO NOTCHES AND INSTALL SNAP RING. IF LOCKING PLATE DOES NOT "SEAT", MOVE THE ADJUSTING NUT SLIGHTLY UNTIL IT DROPS IN PLACE. THE DIRECTION IS BEST DETERMINED BY WHETHER A MINIMUM TORQUE APPLICATION OR A MAXIMUM ONE IS DESIRED.



INSTALL PRESSURE PLATES USING SCREWS 128-520
1/4 x 7/8" HEX WASHER HEAD THREAD FORMING TYPE AB



SCREWS ARE TO BE LOCATED 9" ON CENTER.
ALWAYS LOCATE A SCREW AS CLOSE AS POSSIBLE TO A
HORIZONTAL JOINT. THIS WILL PROVIDE MAXIMUM PRESSURE
FOR THE CRITICAL JOINT SEALS.

INSTALL HORIZONTAL PRESSURE PLATES WITH WEEP HOLES
TOWARDS TOP OF HORIZONTAL.

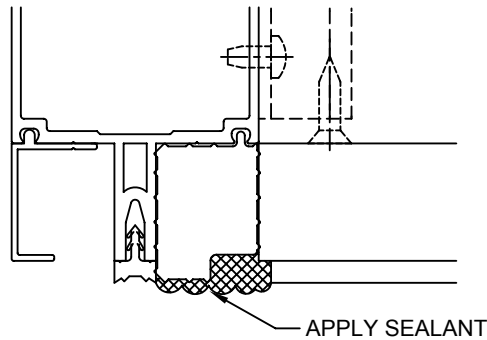
AT EACH HORIZONTAL AND VERTICAL PRESSURE PLATE
INSTALL TWO SCREWS PART WAY, THEN INSTALL THE THIRD
SCREW ALL THE WAY, AND THEN TIGHTEN THE FIRST TWO
SCREWS. THIS ELIMINATES LATERAL WALKING OF THE
PRESSURE PLATE POSITION.

TORQUE ALL SCREWS TO 95 TO 100 INCH POUNDS. DURING
COLD WEATHER, TORQUE SCREWS TO 50 INCH POUNDS
UNTIL ALL 4 SIDES HAVE BEEN CLAMPED. THEN TORQUE
SCREWS TO 95 TO 100 INCH POUNDS.

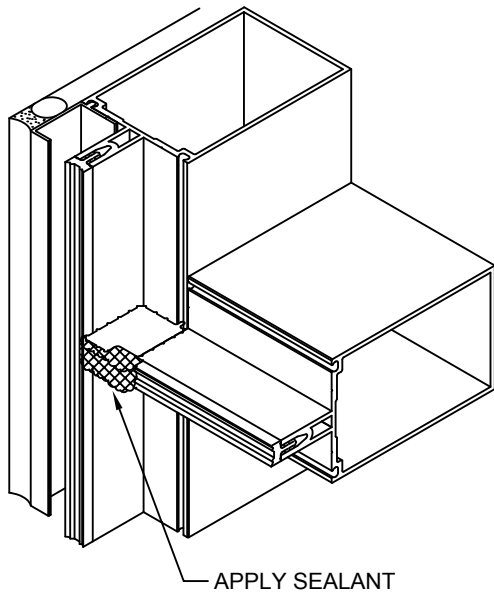
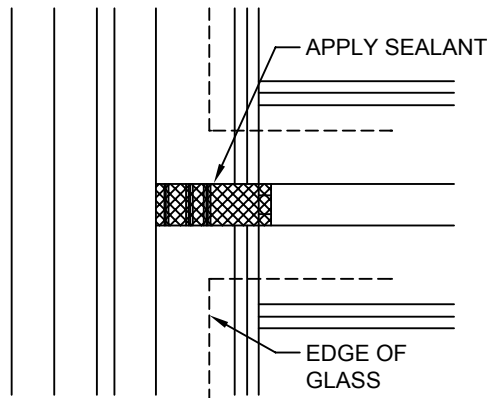
INSTALL EXTERIOR
PRESSURE PLATES

CLEAN FACE OF JOINT PLUG PER SEALANT
MANUFACTURER'S RECOMMENDATIONS.

JUST BEFORE INSTALLING VERTICAL PRESSURE
PLATES, APPLY A GENEROUS AMOUNT OF
SEALANT TO THE JOINT PLUG FACE FILLING JOINT
AS SHOWN.



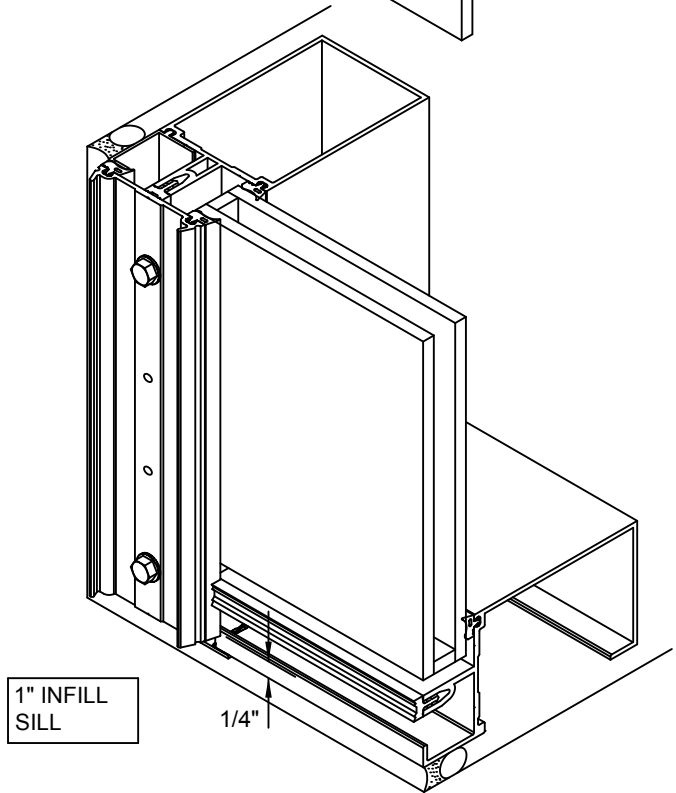
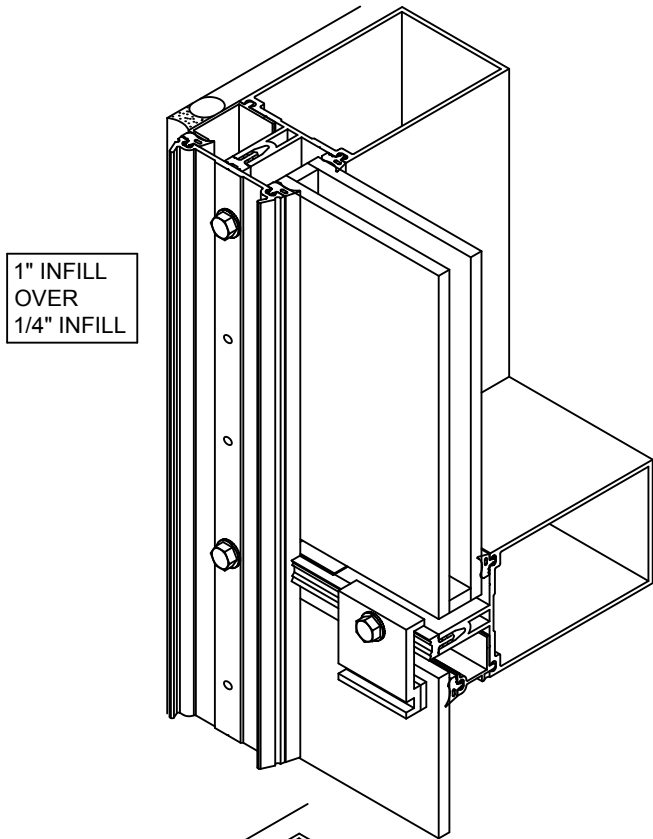
AT INTERMEDIATE HORIZONTALS



INSTALL EXTERIOR
PRESSURE PLATES

INSTALL VERTICAL PRESSURE PLATE 1/4" SHORT OF
FRAME HEIGHT AT SILL. VERTICAL PRESSURE PLATE IS
FLUSH WITH FRAME HEIGHT AT HEAD.

NOTE - THE TORQUE LIMIT TOOL WAS DESIGNED TO BE USED
WITH A HAND DRIVEN DEVICE. THE TOOL CAN BE ADAPTED TO
A DRILL MOTOR. IF USED AT A MAXIMUM SPEED OF APPROX.
300 RPM. HIGHER SPEEDS CAN CAUSE OVERHEATING AND
AFFECT THE ACCURACY. AFTER APPROX. 1 HOUR OF TOOL
USAGE CHECK TORQUE SETTINGS WITH A TORQUE WRENCH.



THESE DRAWINGS ARE THE SOLE AND EXCLUSIVE PROPERTY OF KAWNEER AND CONTAIN
SENSITIVE, PRIVILEGED OR CONFIDENTIAL INFORMATION WHICH MAY BE USED ONLY FOR ITS
BENEFIT. THE DISCLOSURE OF THESE DRAWINGS TO UNAUTHORIZED PERSONS IS STRICTLY
PROHIBITED. THIS DOCUMENT AND ALL COPIES MUST BE RETURNED UPON DEMAND.
© COPYRIGHT KAWNEER COMPANY, INC., 2004

INSTALL EXTERIOR
PRESSURE PLATES

ALL SURFACES AND GROOVES MUST BE CLEANED PER THE
SEALANT MANUFACTURER'S RECOMMENDATIONS.

TYPICAL AT CAPTURED SPLICE JOINTS

NOTE:
SEALANT MUST BE
CAPABLE OF ±50%
MOVEMENT.

TOP OF VERTICAL
MULLION TO TOP
PRESSURE PLATE
IS 1 1/2".

AT TOP PRESSURE PLATE,
LOCATE SCREW CLOSE TO
THE MULLION JOINT BUT
NOT BELOW THE JOINT.

COMPLETELY SEAL JOINT.
DO NOT LET SEALANT
INTERFERE WITH COVER SNAP.
OVERLAP PRESSURE PLATE
FACE WITH SEALANT.



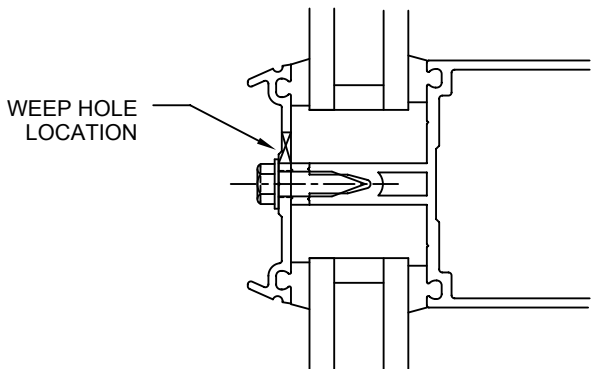
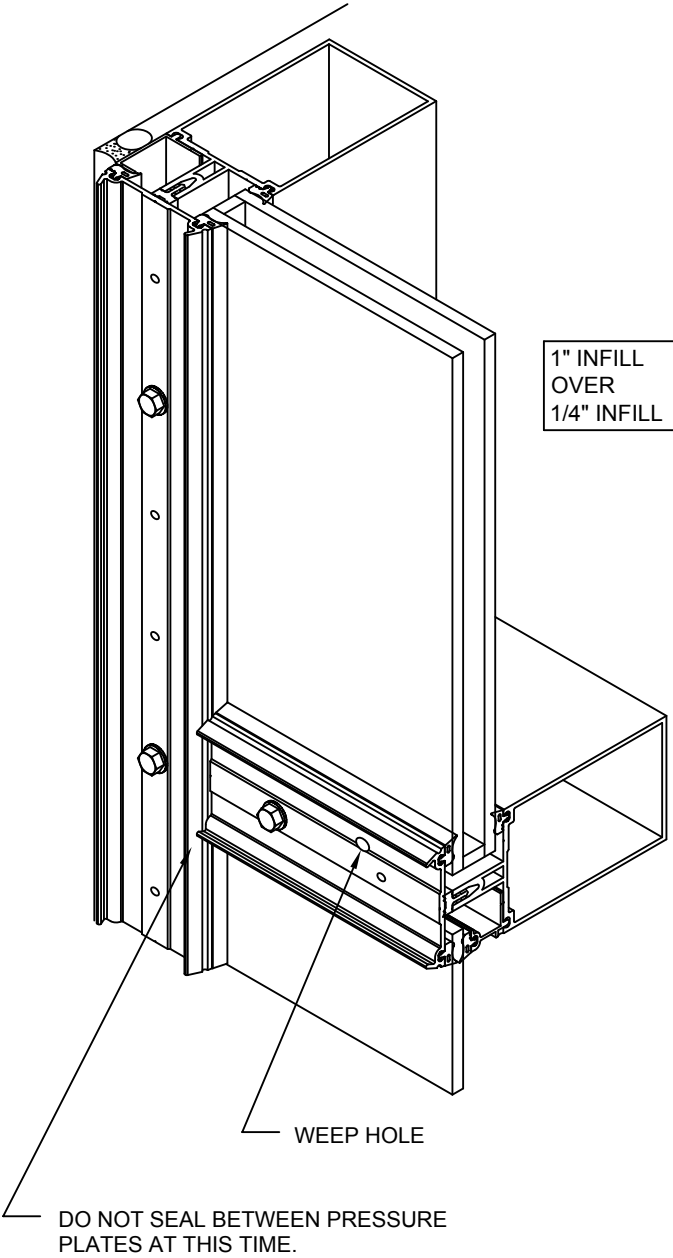
Product Engineering & Development

95503-07
12/07/07

1600 L · R
SSG
INSTALLATION
INSTRUCTIONS

**INSTALL EXTERIOR
PRESSURE PLATES**

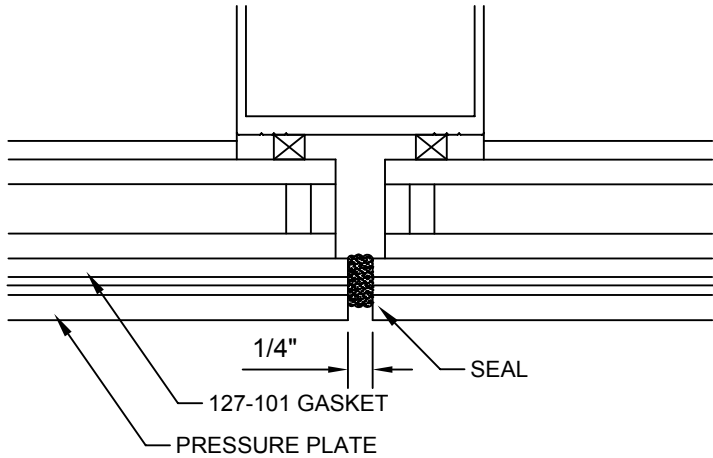
INSTALL HORIZONTAL PRESSURE PLATES. ALLOW A 3/16" GAP AT VERTICAL PRESSURE PLATES. WEEP HOLES ARE TO BE IN THE TOP HALF OF HORIZONTAL PRESSURE PLATE.



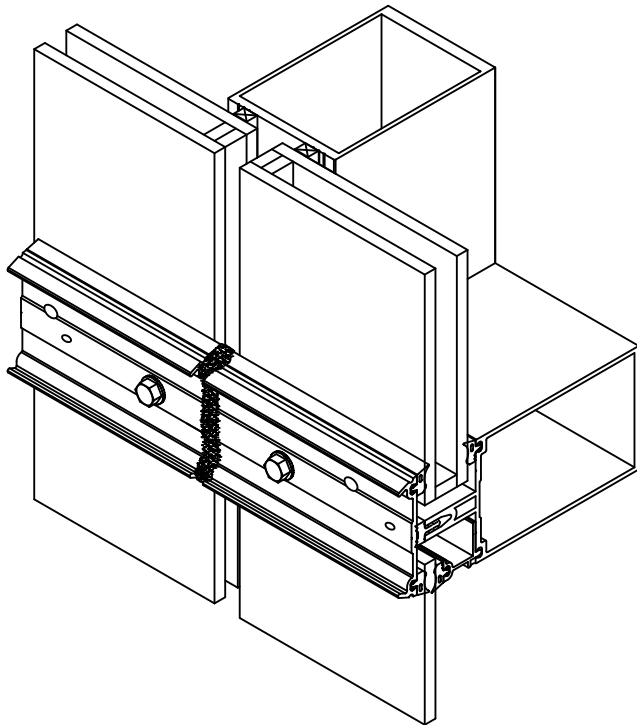
**INSTALL EXTERIOR
PRESSURE PLATES**

ALLOW A 1/4" GAP BETWEEN HORIZONTAL PRESSURE PLATES AT CENTER LINE OF STRUCTURAL GLAZED VERTICALS WHERE REQUIRED.

SEAL 1/4" GAP BETWEEN HORIZONTAL PRESSURE PLATES AND GASKETS. TOOL SEALANT. KEEP SEALANT OUT OF COVER SNAP AREA ON PRESSURE PLATES.



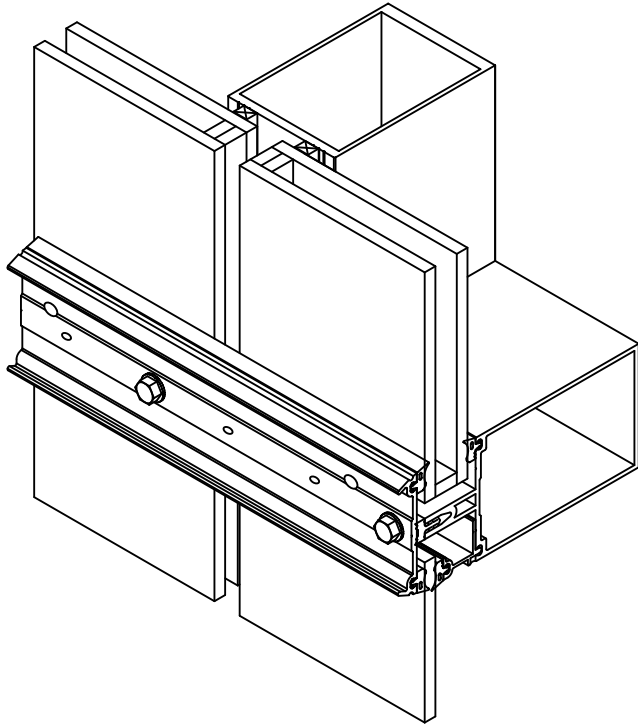
1" INFILL
OVER
1/4" INFILL



**INSTALL EXTERIOR
PRESSURE PLATES**

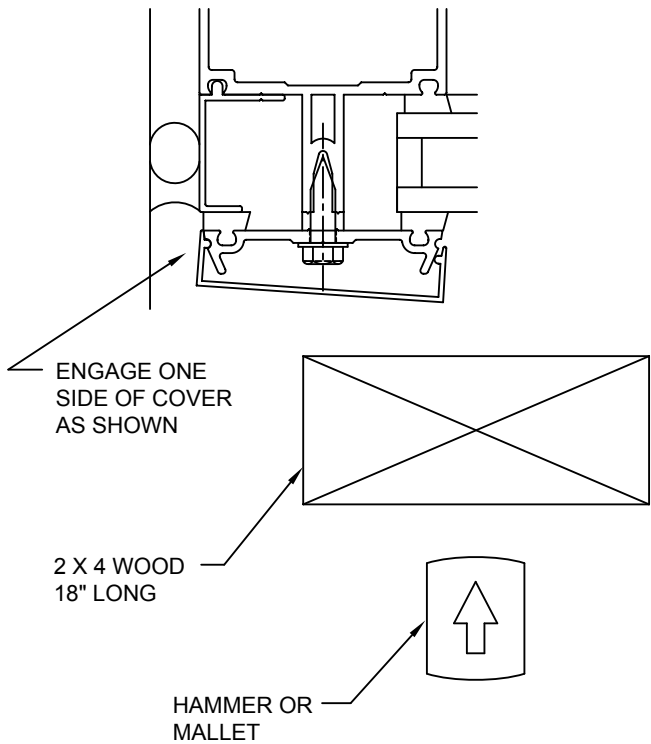
STRUCTURAL GLAZED VERTICAL WHERE HORIZONTAL PRESSURE PLATE RUNS THROUGH.

1" INFILL
OVER
1/4" INFILL



INSTALL EXTERIOR
COVERS

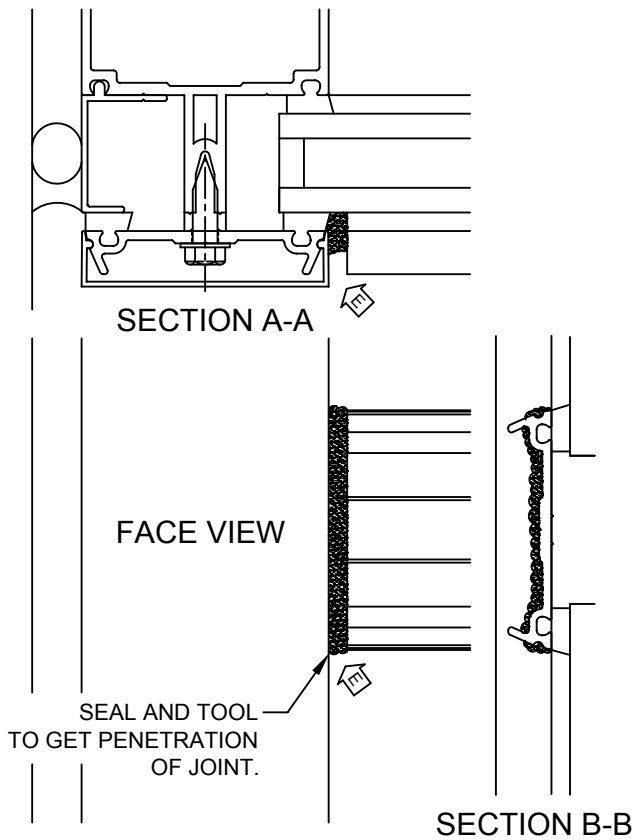
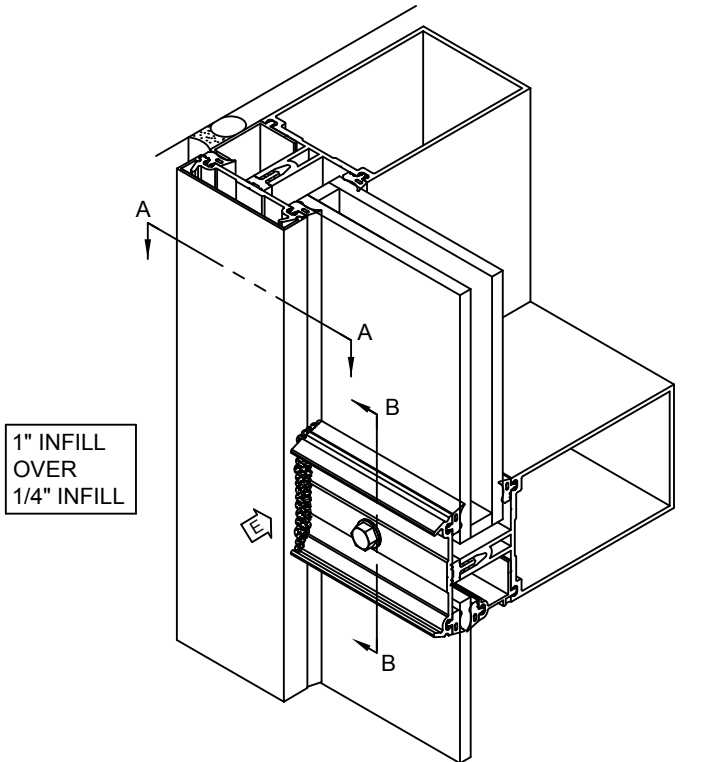
CARE MUST BE TAKEN TO AVOID DAMAGE
TO COVERS DURING INSTALLATION.
USE A 18" LONG PIECE OF 2 X 4 WOOD
ALONG WITH A HAMMER OR MALLET TO
SEAT THE COVER.



INSTALL EXTERIOR
COVERS

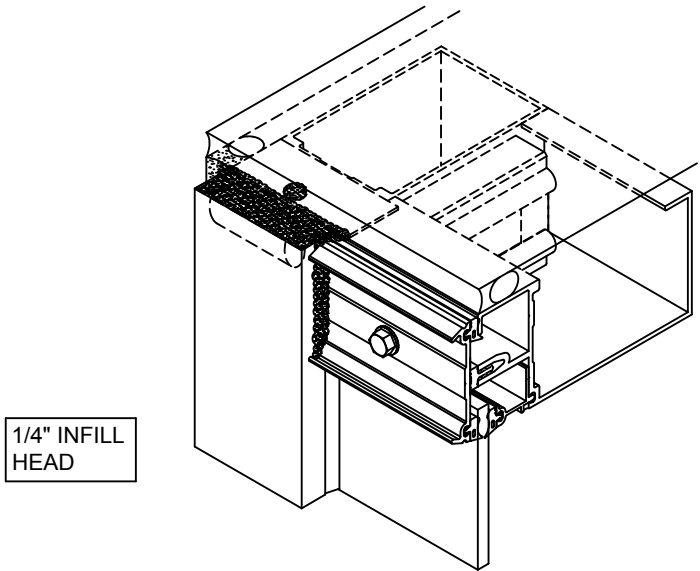
INSTALL VERTICAL COVERS FIRST.

SEAL BETWEEN VERTICAL COVER AND END OF
HORIZONTAL PRESSURE PLATES COMPLETELY. TOOL
SEALANT. KEEP COVER SNAP AREA FREE OF SEALANT ON
HORIZONTAL PRESSURE PLATE. TYPICAL AT ALL JOINTS.



INSTALL EXTERIOR
COVERS

AT HEAD, IN ADDITION TO THE SEAL SHOWN ABOVE, APPLY
BACKER ROD IN TOP OF COVER. SEAL TOP OF VERTICAL
COVER COMPLETELY. EXTEND SEAL BACK AND MARRY TO
PERIMETER SEAL. TOOL SEALANT. KEEP COVER SNAP
AREA FREE OF SEALANT ON HORIZONTAL PRESSURE
PLATE. TYPICAL AT ALL JOINTS AT HEAD.



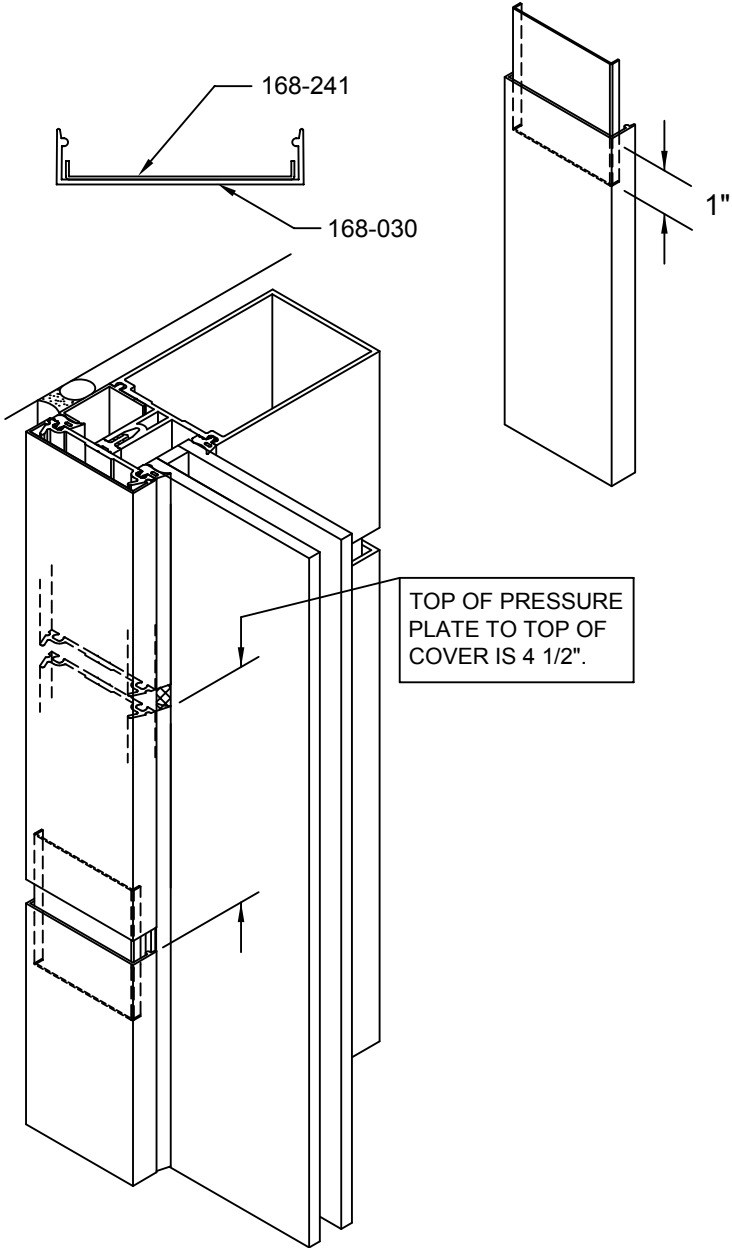
CONFIDENTIAL AND PROPRIETARY INFORMATION
KAWNEER COMPANY INC.

THESE DRAWINGS ARE THE SOLE AND EXCLUSIVE PROPERTY OF KAWNEER AND CONTAIN
SENSITIVE, PRIVILEGED OR CONFIDENTIAL INFORMATION WHICH MAY BE USED ONLY FOR ITS
BENEFIT. THE DISCLOSURE OF THESE DRAWINGS TO UNAUTHORIZED PERSONS IS STRICTLY
PROHIBITED. THIS DOCUMENT AND ALL COPIES MUST BE RETURNED UPON DEMAND.
© COPYRIGHT KAWNEER COMPANY, INC., 2004

INSTALL EXTERIOR
COVERS

AT JAMB VERTICAL EXPANSION JOINT

APPLY 168-241 SPLICE SLEEVE IN THE
TOP OF THE BOTTOM COVER WITH SEALANT.



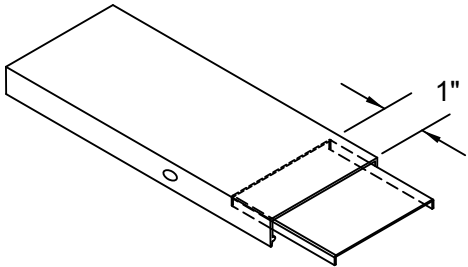
Product Engineering & Development

95503-07
12/07/07

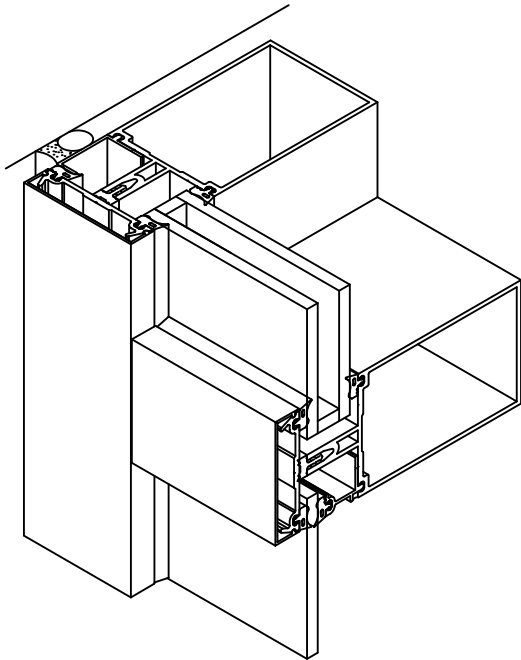
1600 L · R
SSG
INSTALLATION
INSTRUCTIONS

INSTALL EXTERIOR
COVERS

APPLY 168-241 COVER SPLICE SLEEVE IN RIGHT END OF HORIZONTAL COVERS WITH SEALANT, WHERE SPLICE IS REQUIRED.



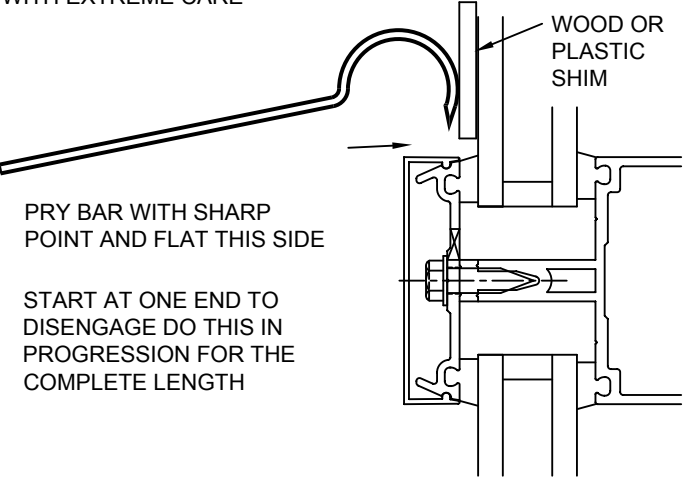
INSTALL HORIZONTAL COVERS AT CAPTURED VERTICALS. COVERS ARE TO BE INSTALLED WITH THE WEEP HOLES DOWN.



1" INFILL
OVER
1/4" INFILL

REMOVING COVERS

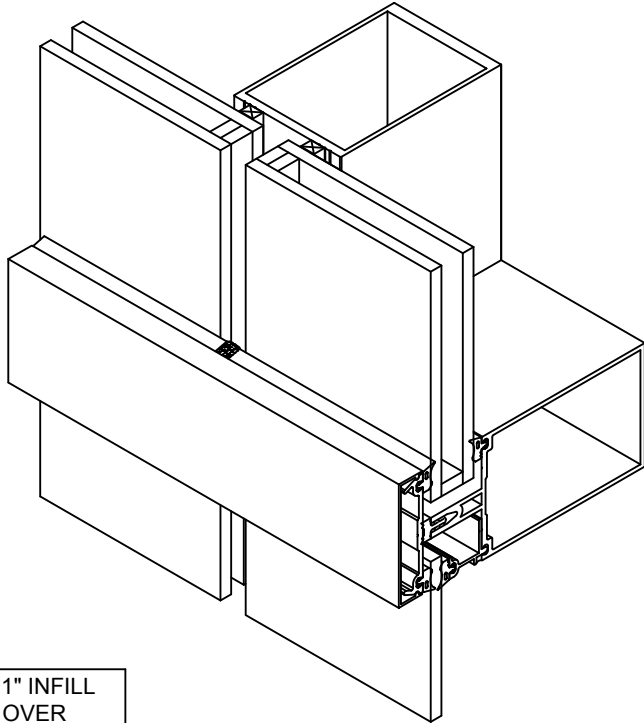
COVERS CAN BE SAVED IF TOLERANCES ARE NOT TOO TIGHT AND THE COVER IS REMOVED WITH EXTREME CARE



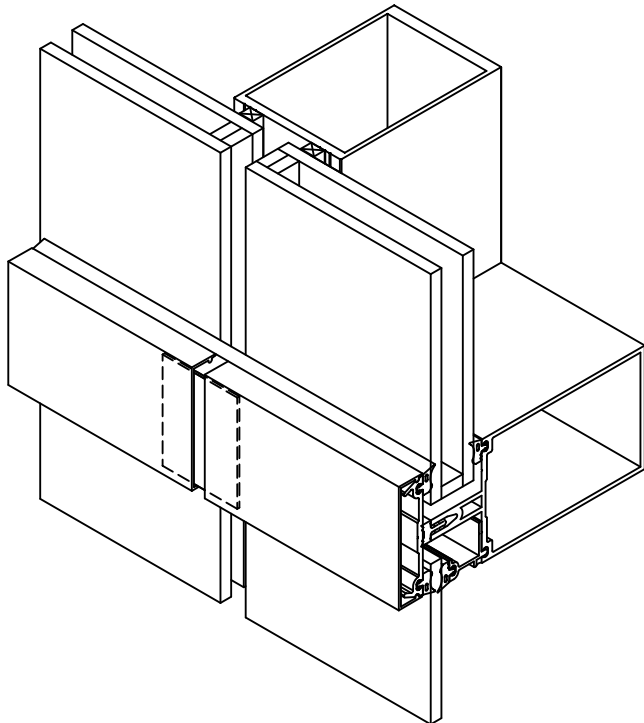
INSTALL EXTERIOR
COVERS

INSTALL HORIZONTAL COVERS AT SSG VERTICALS. COVERS ARE TO BE INSTALLED WITH THE WEEP HOLES DOWN.

1" INFILL
OVER
1/4" INFILL



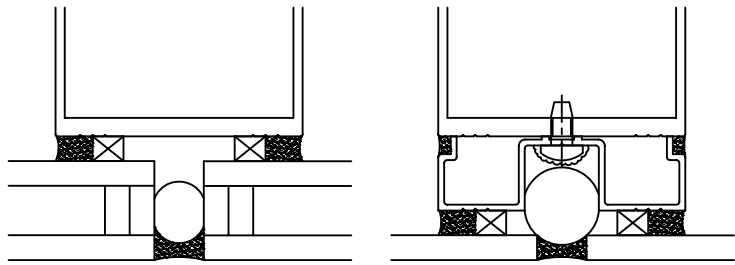
1" INFILL
OVER
1/4" INFILL



INSTALL STRUCTURAL
AND WEATHER SEALS

KAWNEER DOES NOT SUPPLY SEALANT. SEALANT TO BE SILICONE AS RECOMMENDED BY THE SEALANT MANUFACTURER. INFILL AND METAL TO BE CLEANED PER THE SEALANT MANUFACTURER'S RECOMMENDATIONS. SEALANT BACKUP ROD TO BE PER THE SEALANT MANUFACTURER'S RECOMMENDATIONS.

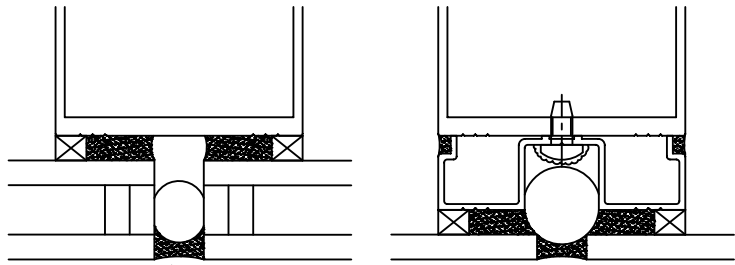
FILL SPACE BETWEEN INSULATED UNITS AND BEHIND SINGLE GLAZED UNITS WITH RECOMMENDED BACKUP ROD. APPLY STRUCTURAL SEAL AND WEATHER SEAL AS SHOWN. ALLOW STRUCTURAL SEAL TO CURE PER SEALANT MANUFACTURER'S RECOMMENDATIONS. THEN REMOVE TEMPORARY RETAINERS, SEAL FASTENER HOLES AND FILL WEATHER SEAL HOLES.



VISION AT INTERIOR
STRUCTURAL SEAL

WEATHER
SEAL

SPANDREL AT INTERIOR
STRUCTURAL SEAL



VISION AT EXTERIOR
STRUCTURAL SEAL

WEATHER
SEAL

SPANDREL AT EXTERIOR
STRUCTURAL SEAL

EXTERIOR STRUCTURAL SEAL MUST BE APPLIED IN THREE STEPS. EACH SIDE SEPARATELY, THEN THE WEATHER SEAL.

CONFIDENTIAL AND PROPRIETARY INFORMATION
KAWNEER COMPANY INC.

THESE DRAWINGS ARE THE SOLE AND EXCLUSIVE PROPERTY OF KAWNEER AND CONTAIN SENSITIVE, PRIVILEGED OR CONFIDENTIAL INFORMATION WHICH MAY BE USED ONLY FOR ITS BENEFIT. THE DISCLOSURE OF THESE DRAWINGS TO UNAUTHORIZED PERSONS IS STRICTLY PROHIBITED. THIS DOCUMENT AND ALL COPIES MUST BE RETURNED UPON DEMAND.
© COPYRIGHT KAWNEER COMPANY, INC., 2004



Product Engineering & Development

95503-07
12/07/07

1600 L · R
SSG
INSTALLATION
INSTRUCTIONS