

GENERAL NOTES

THESE INSTALLATION INSTRUCTIONS ARE A SUPPLEMENT TO THE APPROVED SHOP DRAWINGS. USE IN CONJUNCTION WITH THOSE DRAWINGS.

1 - HANDLING, STORING AND PROTECTING ALUMINUM MATERIAL.

THE FOLLOWING PRECAUTIONS ARE RECOMMENDED TO ASSURE EARLY ACCEPTANCE OF YOUR PRODUCTS AND WORKMANSHIP.

A - HANDLE CAREFULLY - DO NOT DROP FROM THE TRUCK. STACK WITH ADEQUATE SEPARATION SO MATERIAL WILL NOT RUB TOGETHER. STORE OFF THE GROUND. PROTECT AGAINST ELEMENTS AND OTHER CONSTRUCTION TRADES.

B - KEEP MATERIAL AWAY FROM WATER, MUD AND SPRAY - PREVENT CEMENT, PLASTER AND OTHER MATERIALS FROM DAMAGING THE FINISH.

C - PROTECT THE MATERIALS AFTER ERECTION, BY WRAPPING WITH KRAFT PAPER - OR BY ERECTING VISQUEEN/CANVAS SPLATTER SCREENS. CEMENT, PLASTER, TERRAZZO AND OTHER ALKALINE MATERIALS ARE VERY HARMFUL TO THE FINISH AND SHOULD BE REMOVED WITH WATER AND MILD SOAP BEFORE SETTING OCCURS. UNDER NO CIRCUMSTANCES ALLOW THESE MATERIALS TO DRY OR PERMANENT STAINING WILL OCCUR.

2 - GENERAL RULES

THE FOLLOWING PRACTICES ARE RECOMMENDED FOR ALL WALL INSTALLATIONS.

A - READ COMPLETE INSTRUCTIONS BEFORE ORDERING GLASS OR FABRICATING MATERIAL.

B - CHECK SHOP DRAWINGS TO BECOME THOROUGHLY FAMILIAR WITH THE JOB.

C - ALL MATERIALS ARE TO BE INSTALLED PLUMB, LEVEL AND TRUE.

D - ALL WORK SHOULD START FROM ESTABLISHED BENCH MARKS AND COLUMN CENTER LINES ESTABLISHED BY THE ARCHITECTURAL DRAWINGS AND THE GENERAL CONTRACTOR.

E - THE SEQUENCE OF ERECTION SHOULD BE COORDINATED WITH THE JOB SUPERINTENDENT SO DELAYS ARE PREVENTED AND RISK OF MATERIAL DAMAGE IS MINIMIZED. IF PRESETTING OF ANCHORAGE IS REQUIRED, COORDINATE WITH GENERAL CONTRACTOR AND SUPERVISE LOCATION.

F - MAKE CERTAIN CONSTRUCTION WHICH WILL RECEIVE YOUR MATERIALS IS ACCORDING TO THE CONTRACT DOCUMENTS. IF NOT, NOTIFY THE GENERAL CONTRACTOR IN WRITING AND RESOLVE DIFFERENCES BEFORE PROCEEDING WITH YOUR WORK.

G - INSULATE ALL ALUMINUM TO BE PLACED DIRECTLY IN CONTACT WITH THE MASONRY OR INCOMPATIBLE MATERIALS WITH A HEAVY COAT OF ZINC CHROMATE OR BITUMINOUS PAINT.

H - FOLLOW KAWNEER INSTALLATION AND GLAZING INSTRUCTIONS.

J - CHECK ALL MATERIAL ON ARRIVAL FOR QUANTITY.

K - BE SURE TO HAVE ALL THE MATERIALS AND TOOLS NEEDED TO BEGIN THE INSTALLATION.

- 1 - APPROVED SHOP DRAWINGS
- 2 - LEVEL AND PLUMB (TRANSIT)
- 3 - FASTENERS AND REQUIRED DRIVERS.
- 4 - PERIMETERS AND ACCESSORIES SUCH AS ANCHORS, FASTENERS, SLEEVES AND/OR SPLICE CAPS.
- 5 - SEALING MATERIALS.
- 6 - GLAZING MATERIALS.

L - FOLLOW SEALANT MANUFACTURER'S RECOMMENDATIONS FOR PROPER SEALANT AND APPLICATION. ALL SEALANTS AND MASTICS MUST BE COMPATIBLE WITH ALL SURFACES INCLUDING OTHER SEALANT SURFACES. WHERE REQUIRED ALL SEALANTS MUST ADHERE TO ALL SURFACES INCLUDING OTHER SEALANT SURFACES.

1600 SYSTEM 5

1600 SYSTEM 5 IS AVAILABLE WITH 1" FRAMING MEMBERS WHICH ACCEPT BOTH 1" AND 1/4" INFILLS.

THIS VERSION OF 1600 SYSTEM 5 IS EXTERIOR PRESSURE PLATE GLAZED ONLY SEE GLAZING STEPS.

GLASS BITE IS 7/16" AT VERTICALS.

GLASS BITE IS 7/16" AT HORIZONTALS.

GLASS SIZES MUST BE CALCULATED FROM APPROVED SHOP DRAWINGS. GASKET ASSEMBLIES ARE PREFERRED REFERENCE SHEET #12.

UNLESS OTHERWISE SPECIFIED, IT IS RECOMMENDED THAT SILICONE SEALANT BE USED FOR ALL INTERNAL SEALS.

SEALANT MUST BE APPLIED PER THE SEALANT MANUFACTURER'S RECOMMENDATIONS AND PASS ALL ADHESION AND COMPATIBILITY TESTING. AT ALL JOINT SEALS, SEALANT MUST ADHERE TO METAL, GASKETS, THERMAL SEPARATOR AND JOINT PLUG MATERIALS. CLEAN ALL SURFACES PRIOR TO APPLICATION OF SEALANT AND PRIME WHERE NECESSARY TO ACHIEVE PROPER ADHESION.

CHECK OPENINGS

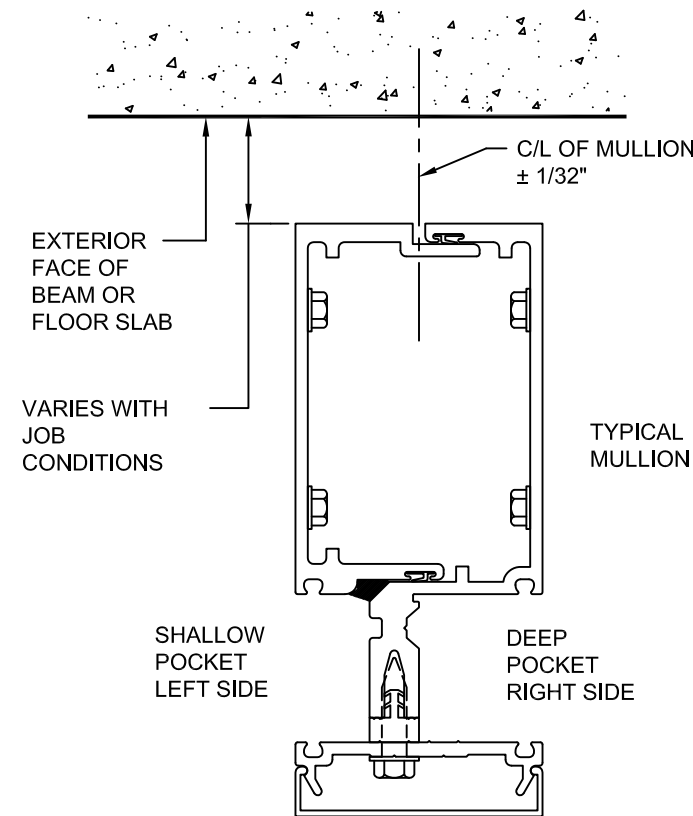
ELEVATIONS AND SLABS MUST BE WITHIN ADJUSTMENT OF ANCHORING SYSTEM. SEE APPROVED SHOP DRAWINGS FOR ALLOWABLE ADJUSTMENT.

ANCHORING SURFACES OF PERIMETER CONSTRUCTION MUST BE LEVEL AND PLUMB WITHIN THE ADJUSTMENT LIMITS OF THE HEAD, SILL AND JAMB. SEE APPROVED SHOP DRAWINGS FOR ALLOWABLE ADJUSTMENT.

LAY OUT ANCHOR AND MULLION CENTERLINES

USE WALL LINES ESTABLISHED BY THE GENERAL CONTRACTOR. ON EACH FLOOR LAY OUT A REFERENCE LINE TO ESTABLISH IN AND OUT WALL LOCATIONS.

USE COLUMN CENTER LINES ESTABLISHED BY THE GENERAL CONTRACTOR. ON EACH FLOOR LAY OUT MULLION CENTER LINES AND ANCHOR CENTER LINES.



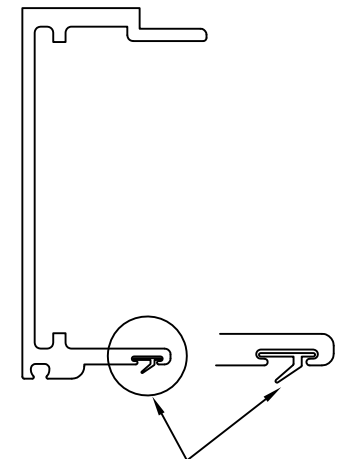
NOTE POSITION OF SHALLOW AND DEEP POCKETS IF IMPORTANT FOR GLAZING

SEE APPROVED SHOP DRAWINGS FOR ANCHOR LAYOUTS

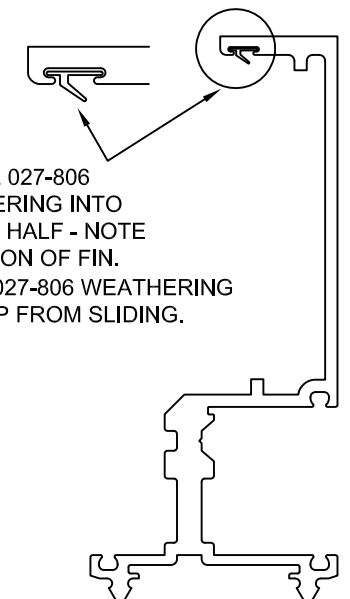
THESE INSTRUCTIONS SHOW THE 6" SYSTEM. THE 7 1/2" SYSTEM IS SIMILAR

FRAME ASSEMBLY

INSTALL 027-806 WEATHERING



INSTALL 027-806 WEATHERING INTO MALE HALF - NOTE DIRECTION OF FIN. STAKE 027-806 WEATHERING TO KEEP FROM SLIDING.



INSTALL 027-806 WEATHERING INTO FEMALE HALF - NOTE DIRECTION OF FIN. STAKE 027-806 WEATHERING TO KEEP FROM SLIDING.

KAWNEER 1600 SYSTEM 5
INSTALLATION - MALE/FEMALE
VERTICAL - EXTERIOR PRESSURE
PLATE GLAZED

PART NUMBER
166-979 1 OF 14

95488-31
07/25/07

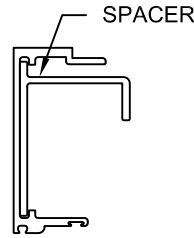
DRAWING:

ORDER:

SHT:

FRAME ASSEMBLY

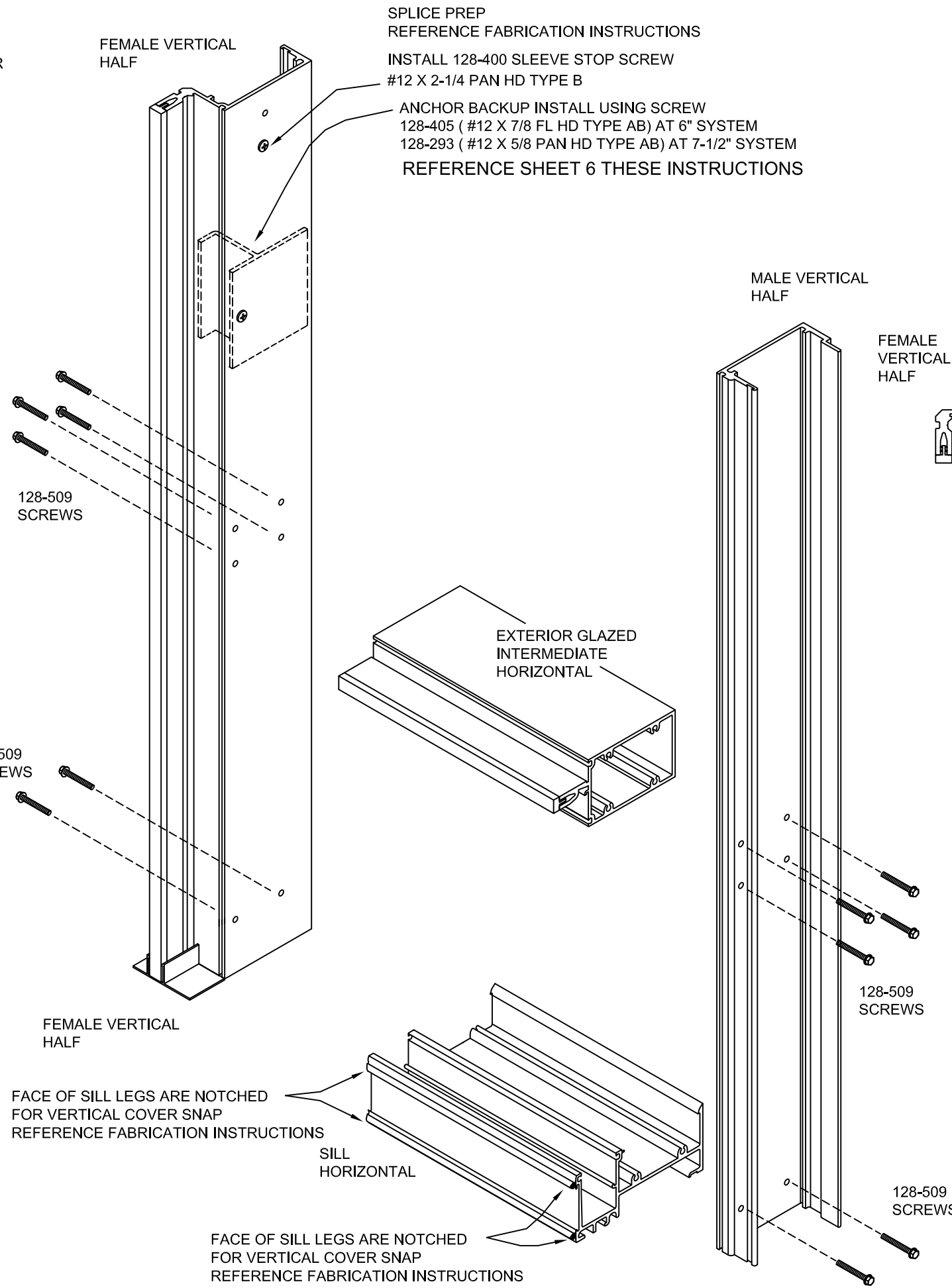
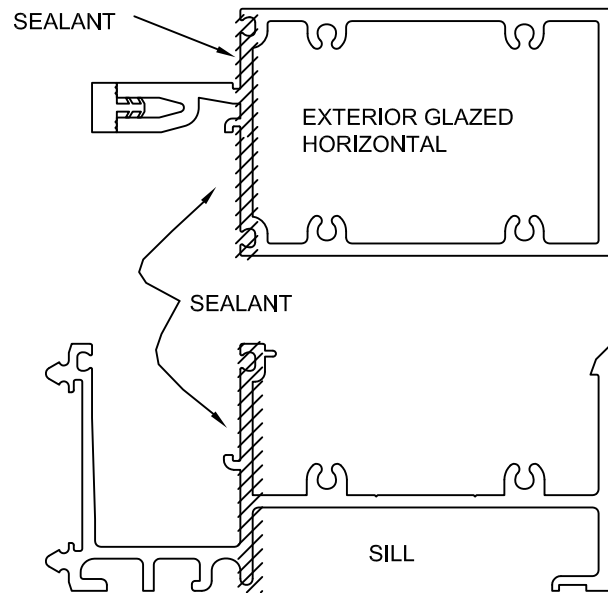
AT SINGLE LITE RIBBON APPLICATIONS MORE THAN 4' IN HEIGHT, APPLY ONE 166-320 SPACER (6" SYSTEM) OR 166-306 SPACER (7 1/2" SYSTEM) AT APPROX. CENTER OF DLO HEIGHT. STAKE INTO PLACE. APPLY SPACER PRIOR TO HORIZONTAL ATTACHMENT.



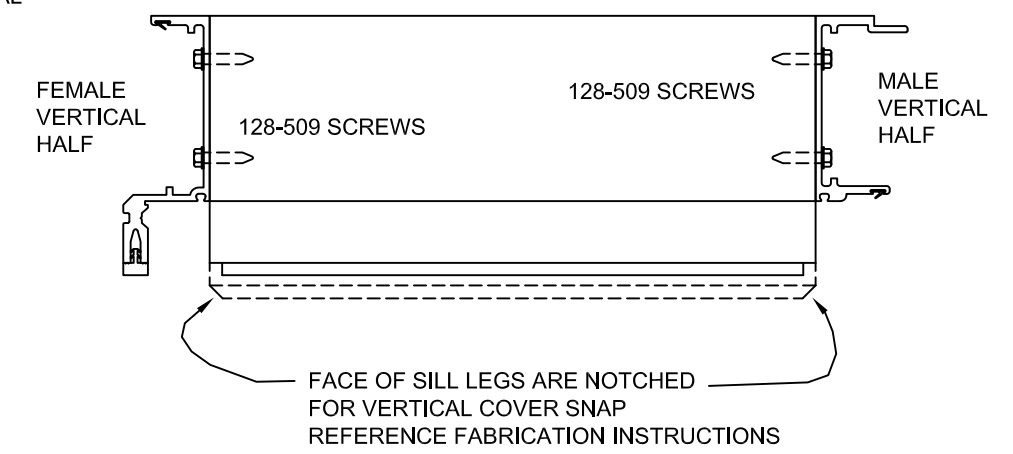
ASSEMBLE VERTICALS TO HORIZONTALS USING 128-509 SCREWS #12 X 1 HEX WASHER HEAD TYPE AB

FRAME IS SHOWN IN UPRIGHT POSITION BUT MAY BE ASSEMBLED IN ANY DESIRABLE POSITION.

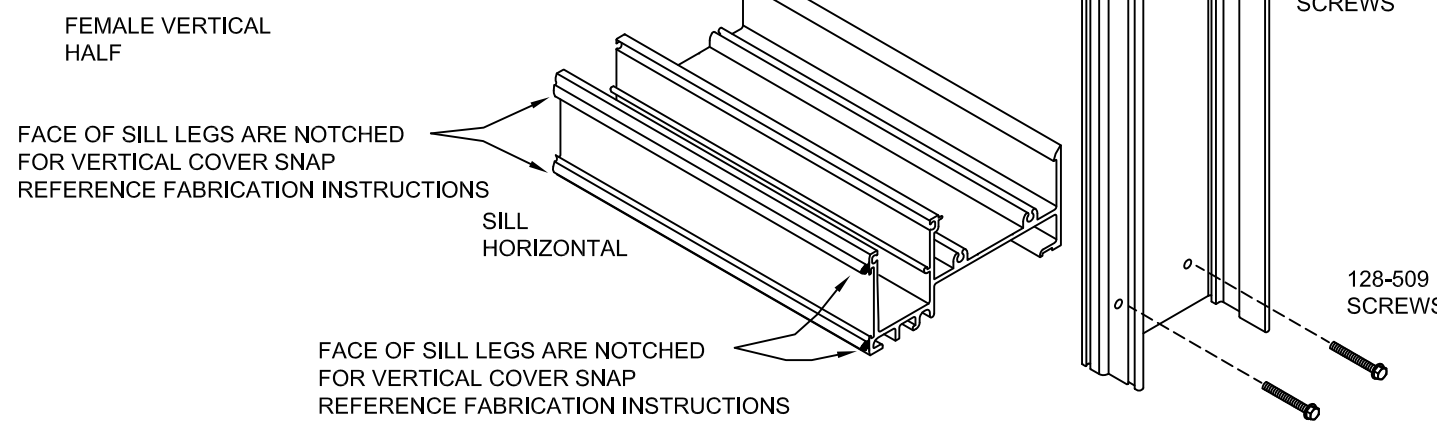
FOR BOTH HORIZONTAL ENDS OF VERTICAL APPLY SEALANT AS SHOWN TOOL SEALANT AFTER ASSEMBLY



ASSEMBLED UNIT



FOR HORIZONTAL END AT MALE HALF OF VERTICAL APPLY SEALANT AS SHOWN TOOL SEALANT AFTER ASSEMBLY



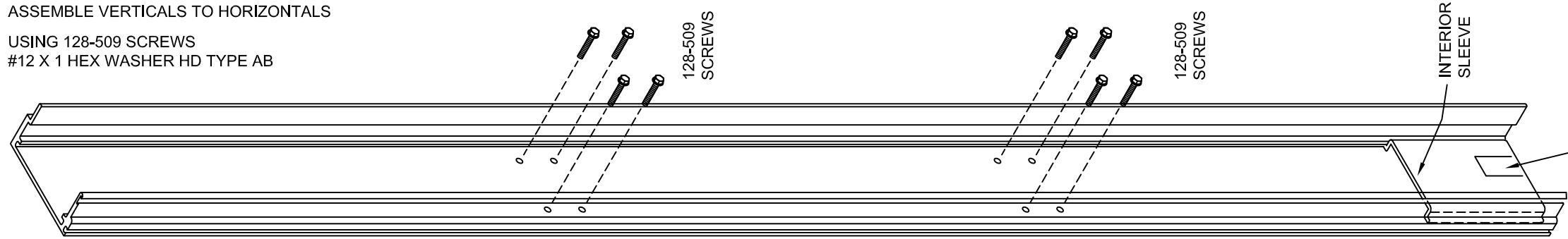
KAWNEER 1600 SYSTEM 5 INSTALLATION - MALE/FEMALE VERTICAL - EXTERIOR PRESSURE PLATE GLAZED	PART NUMBER 166-979 2 OF 14
	95488-31 07/25/07
	DRAWING:
	ORDER:
SHT:	SHT:

FRAME ASSEMBLY

ASSEMBLE VERTICALS TO HORIZONTALS

USING 128-509 SCREWS
#12 X 1 HEX WASHER HD TYPE AB

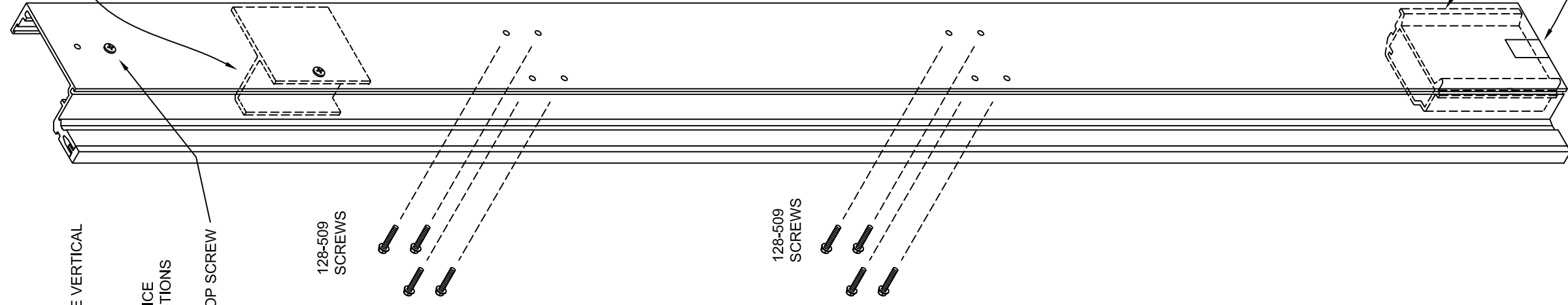
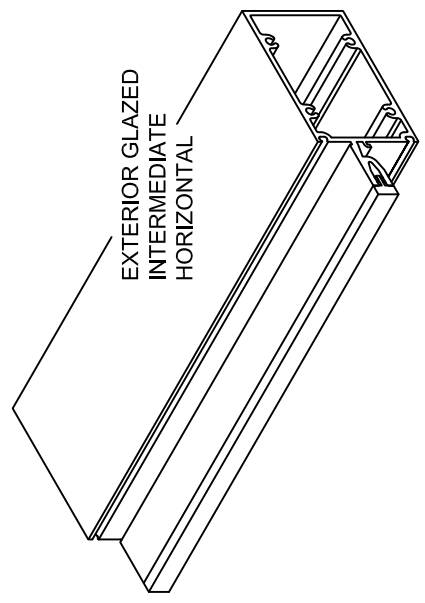
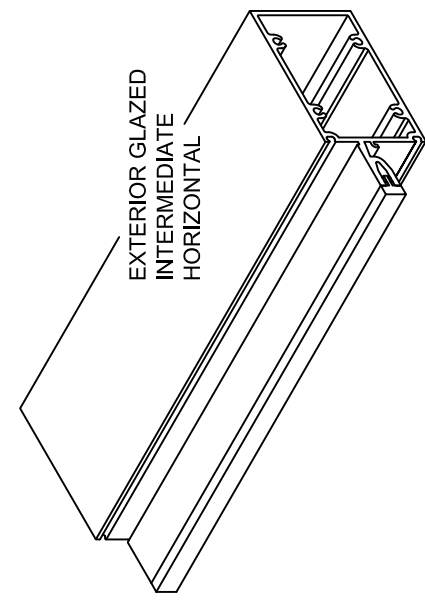
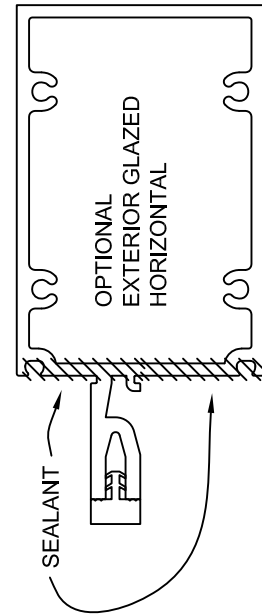
MALE VERTICAL
HALF



SLEEVES ARE FACTORY
TAPPED INTO THE
BOTTOM OF THE TOP

ANCHOR BACKUP INSTALL USING SCREW
128-405 (#12 X 7/8 FL HD TYPE AB) AT 6" SYSTEM
128-293 (#12 X 5/8 PAN HD TYPE AB) AT 7-1/2" SYSTEM
REFERENCE SHEET 6 THESE INSTRUCTIONS

FOR BOTH HORIZONTAL ENDS
OF VERTICAL APPLY SEALANT AS SHOWN
TOOL SEALANT AFTER ASSEMBLY



FEMALE VERTICAL
HALF

SPLICE PREP REFERENCE
FABRICATION INSTRUCTIONS

INSTALL 128-400 SLEEVE STOP SCREW
#12 X 2-1/4 PAN HD TYPE B

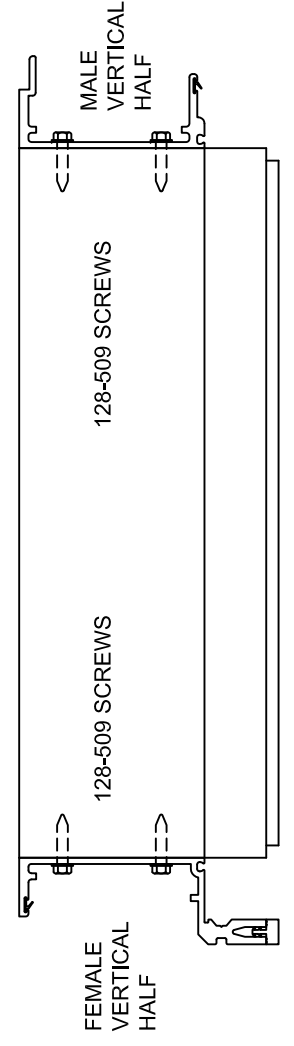
128-509
SCREWS

128-509
SCREWS

INTERIOR
SLEEVE

SLEEVES ARE FACTORY
TAPPED INTO THE
BOTTOM OF THE TOP

ASSEMBLED UNIT



FEMALE
VERTICAL
HALF

128-509 SCREWS

MALE
VERTICAL
HALF

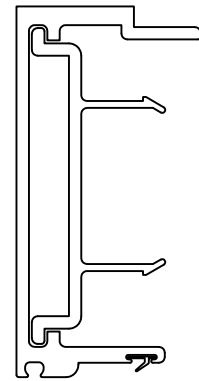
KAWNEER 1600 SYSTEM 5 INSTALLATION - MALE/FEMALE VERTICAL - EXTERIOR PRESSURE PLATE GLAZED	PART NUMBER 166-979 3 OF 14
	DRAWING: 95488-31 07/25/07
	ORDER:
	SHT:

FRAME ASSEMBLY

WHERE REQUIRED SLIDE ANTI-BUCKLING CLIPS INTO PLACE
 FACTORY TO VERIFY IF CLIPS ARE REQUIRED AND LOCATIONS OF CLIPS WITH CALCULATIONS

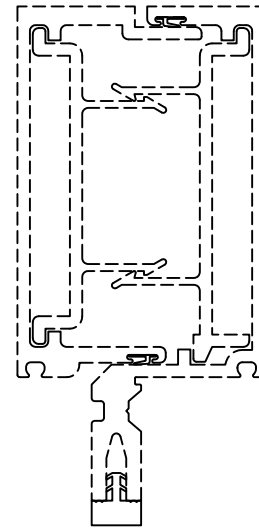
WHEN ANTI-BUCKLING CLIPS ARE REQUIRED THEY NORMALLY WILL BE LOCATED AT THE
 CENTER OF A DAYLITE OPENING HEIGHT. BUT VERY HIGH LOADS COULD REQUIRE MORE CLIPS.

MALE VERTICAL

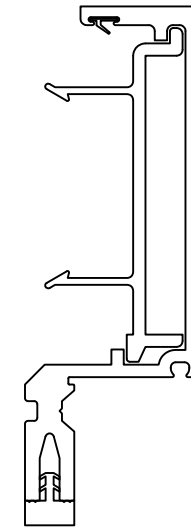


MALE ANTI-BUCKLING
 CLIP 166-351 6" SYSTEM
 CLIP 166-353 7-1/2" SYSTEM
 STAKE OR SEAL
 INTO PLACE

INSTALLED POSITION



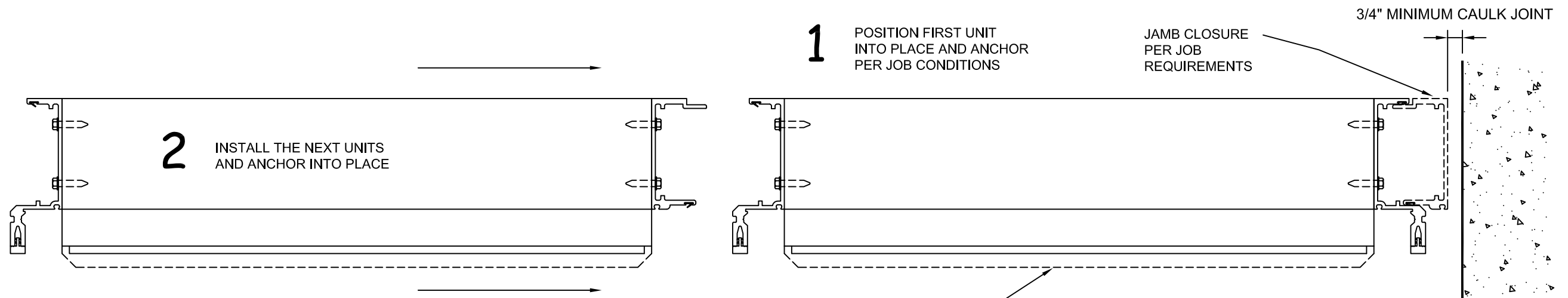
FEMALE VERTICAL



FEMALE ANTI-BUCKLING
 CLIP 166-350 6" SYSTEM
 CLIP 166-352 7-1/2" SYSTEM
 STAKE OR SEAL
 INTO PLACE

INSTALL UNITS

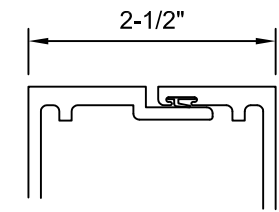
ANCHORING WILL VARY PER JOB - REFERENCE APPROVED SHOP DRAWINGS AND
 ANCHOR / VERTICAL SPLICE DETAILS SHOWN ON NEXT SHEETS #6 AND #7



1 POSITION FIRST UNIT
 INTO PLACE AND ANCHOR
 PER JOB CONDITIONS

2 INSTALL THE NEXT UNITS
 AND ANCHOR INTO PLACE

3 MAINTAIN 2-1/2" DIMENSION AND GAP BETWEEN
 VERTICALS DURING ERECTION OF UNITS



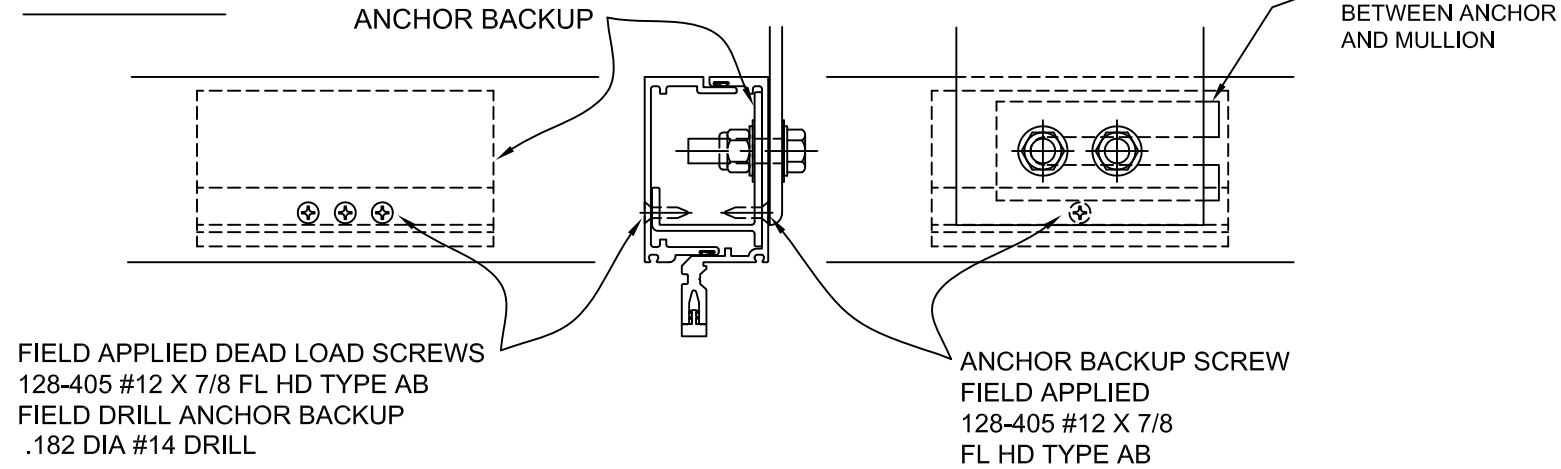
DOTTED LINE IS FACE OF SILL HORIZONTAL

KAWNEER 1600 SYSTEM 5 INSTALLATION - MALE/FEMALE VERTICAL - EXTERIOR PRESSURE PLATE GLAZED	PART NUMBER 166-979 5 OF 14
	95488-31 07/25/07
	DRAWING:
	ORDER:
SHT:	

ANCHOR BACKUP DETAILS

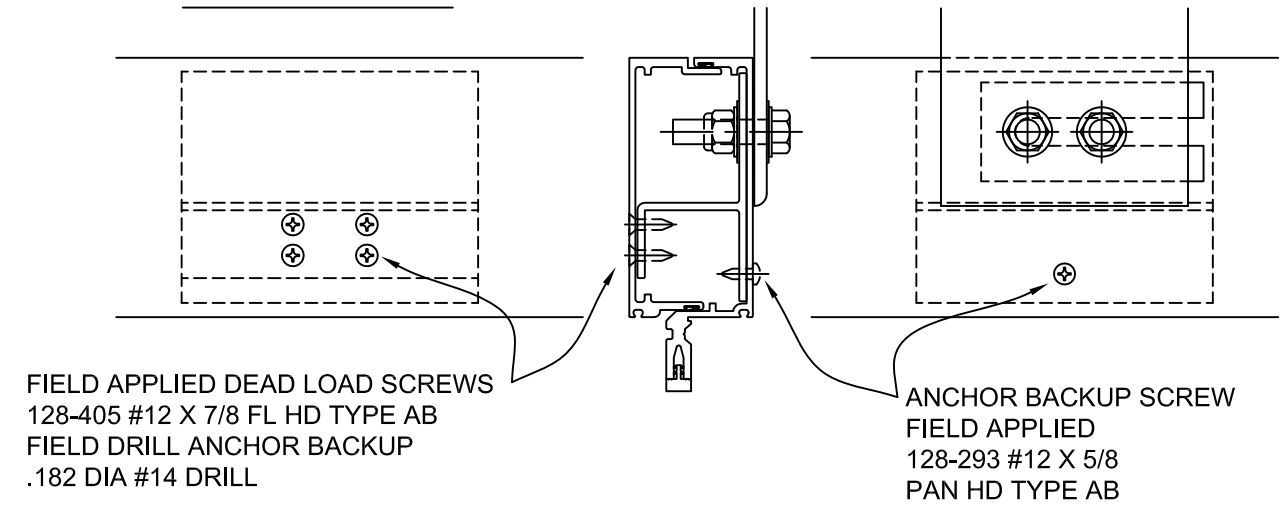
SEE APPROVED SHOP DRAWINGS FOR ANCHOR DETAIL

6" SYSTEM



NOTE DEAD LOAD SCREWS
OCCUR AT DEAD LOAD ANCHORS ONLY

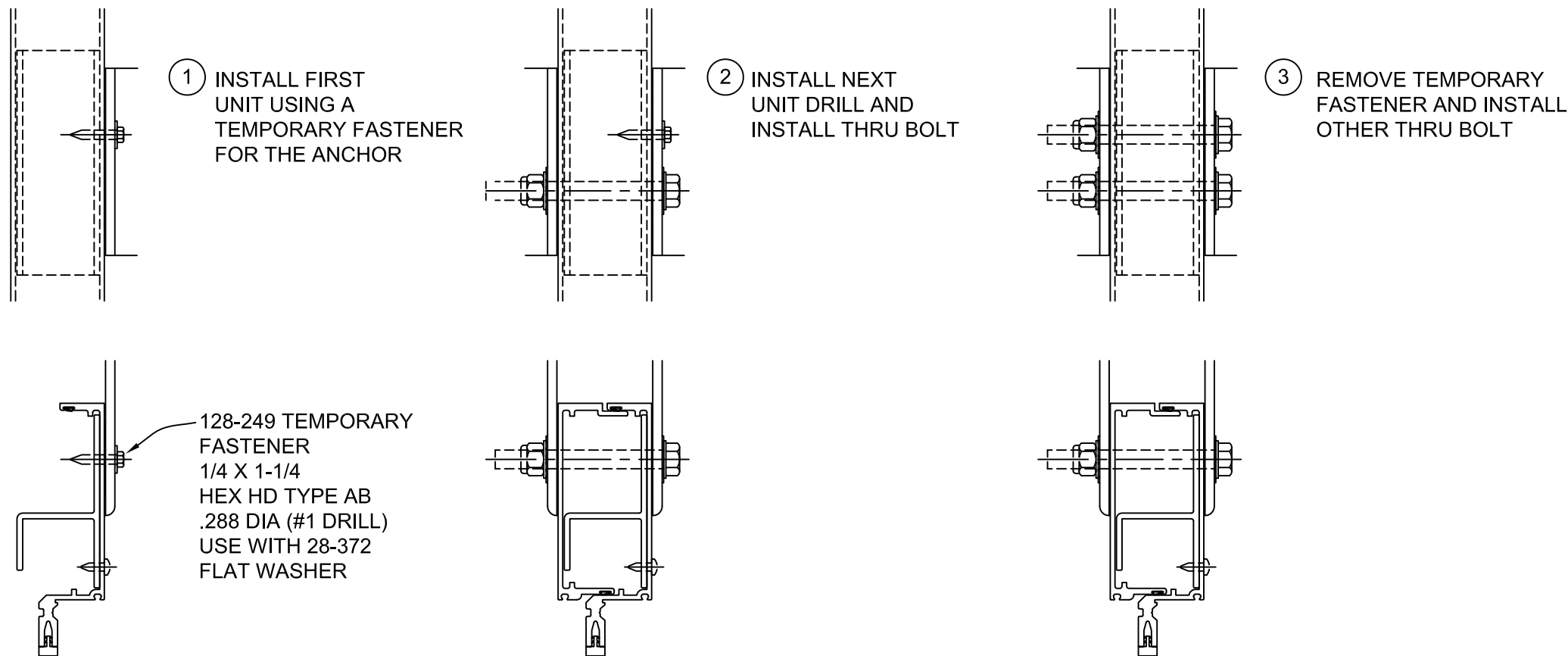
7-1/2" SYSTEM



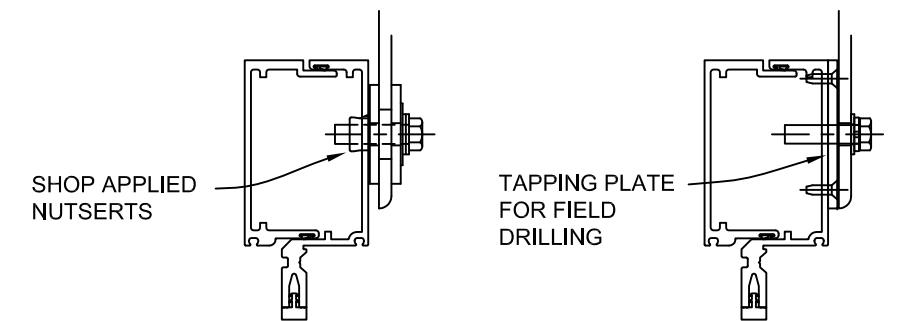
NOTE DEAD LOAD SCREWS
OCCUR AT DEAD LOAD ANCHORS ONLY

DOUBLE ANCHORS CAN BE USED AT EXTERIOR GLAZING ONLY

SEE APPROVED SHOP DRAWINGS FOR ANCHOR DETAIL



OPTIONAL JAMB ANCHORS



KAWNEER 1600 SYSTEM 5
INSTALLATION - MALE/FEMALE
VERTICAL - EXTERIOR PRESSURE
PLATE GLAZED

PART NUMBER
166-979 6 OF 14

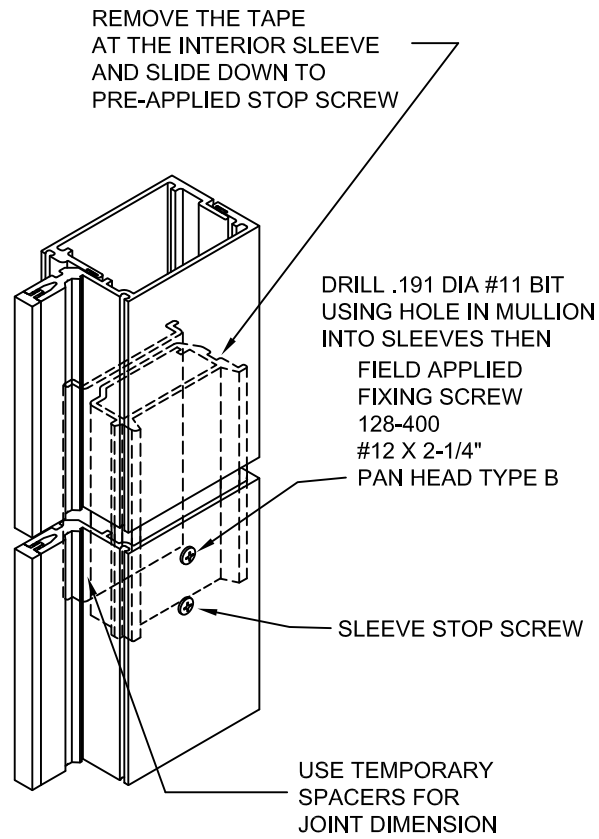
95488-31
07/25/07
DRAWING:
ORDER:
SHT:

SPLICE JOINT DETAILS

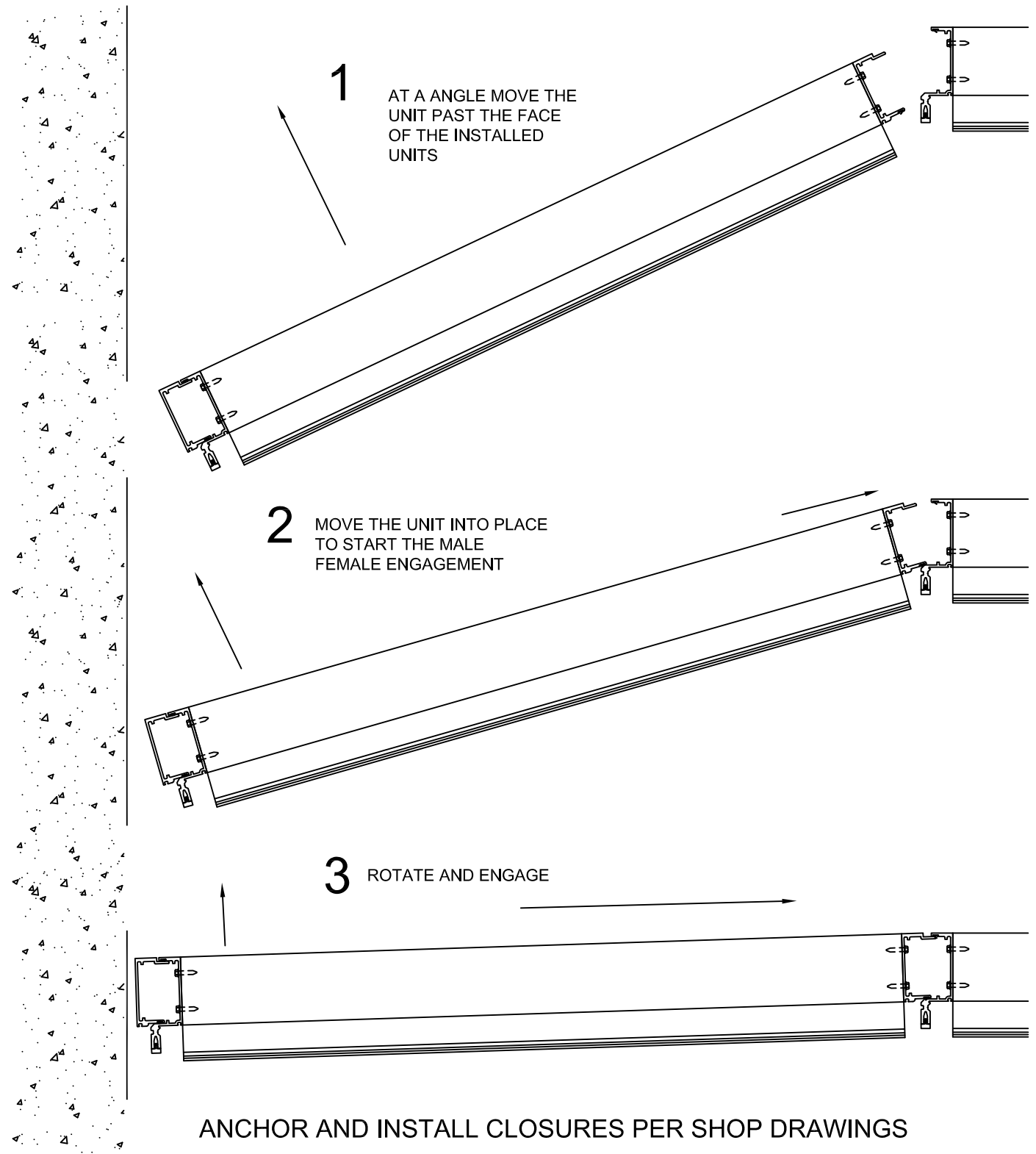
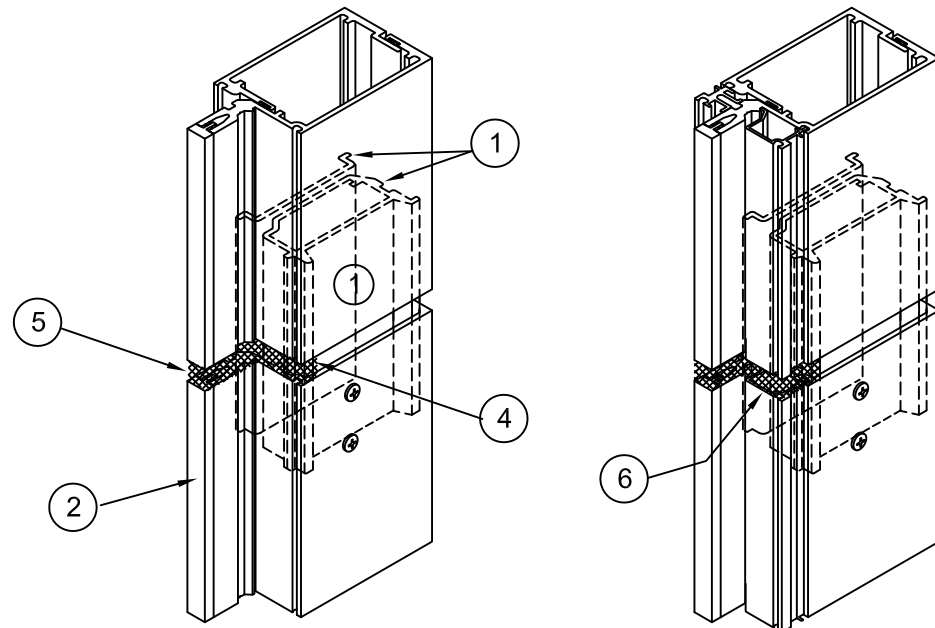
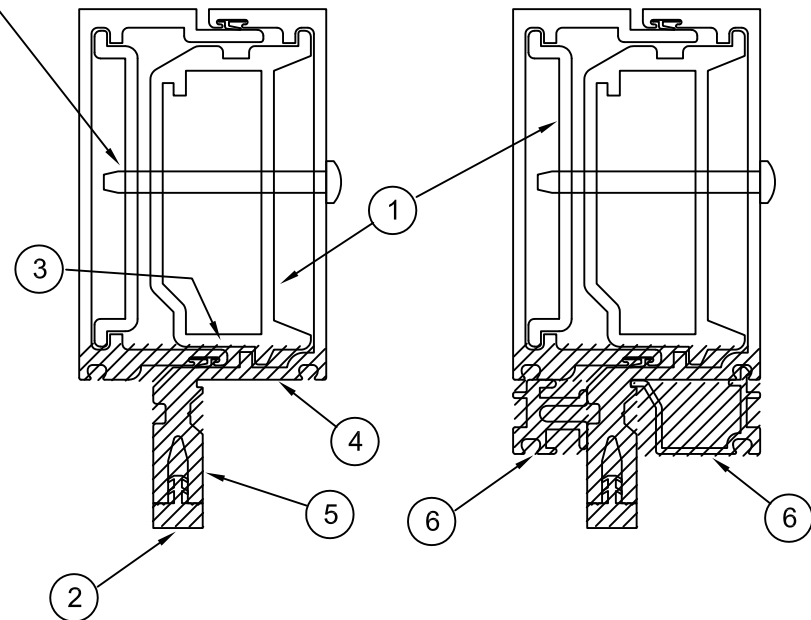
SEAL SPLICE JOINT

INSTALL LAST UNITS

3/4" MINIMUM CAULK JOINT REQUIRED



- ① INTERIOR SLEEVE
- ② THERMAL BREAK
- ③ APPLY BOND BREAKER TAPE TO SLEEVES
- ④ SEAL FACE OF INTERIOR SLEEVE
- ⑤ SEAL TONGUE JOINT
- ⑥ SEAL SPANDREL ADAPTER JOINTS



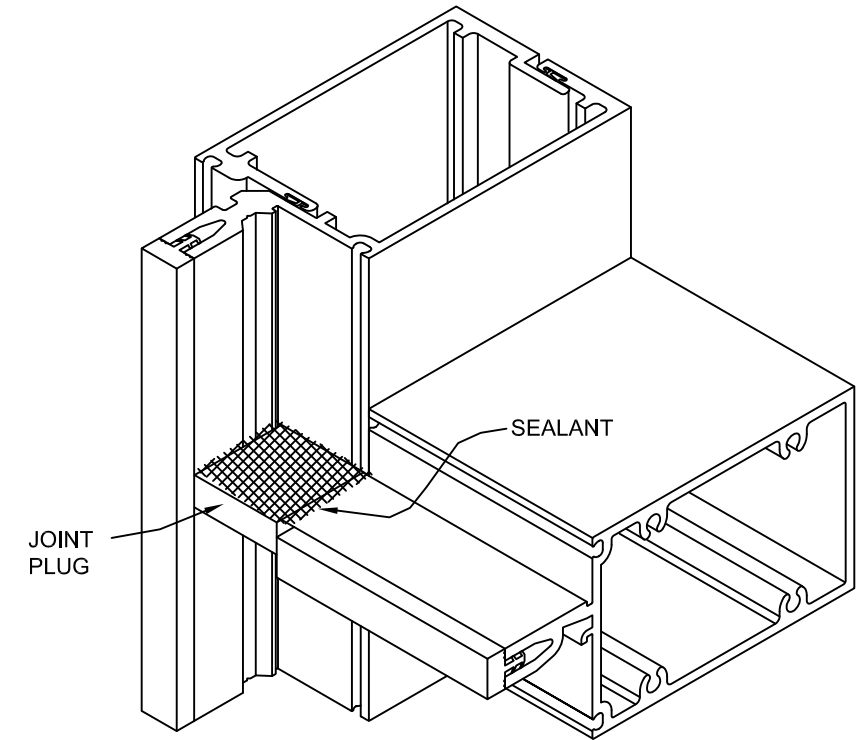
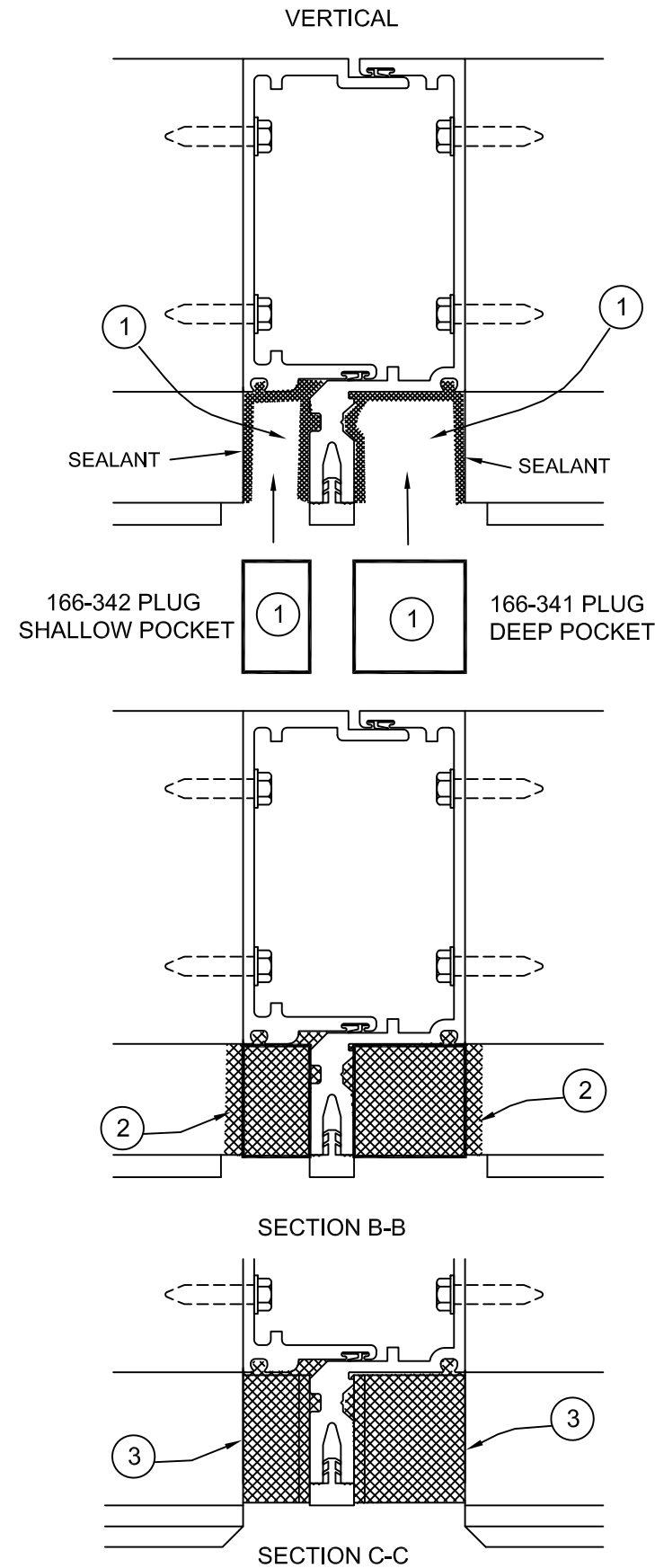
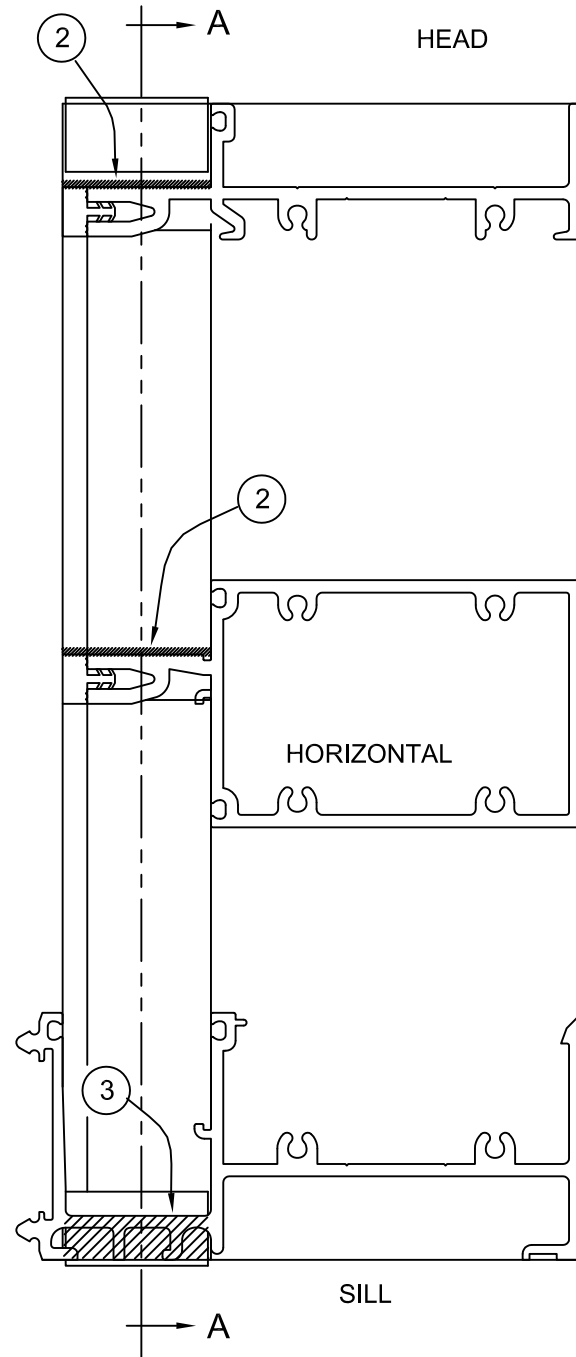
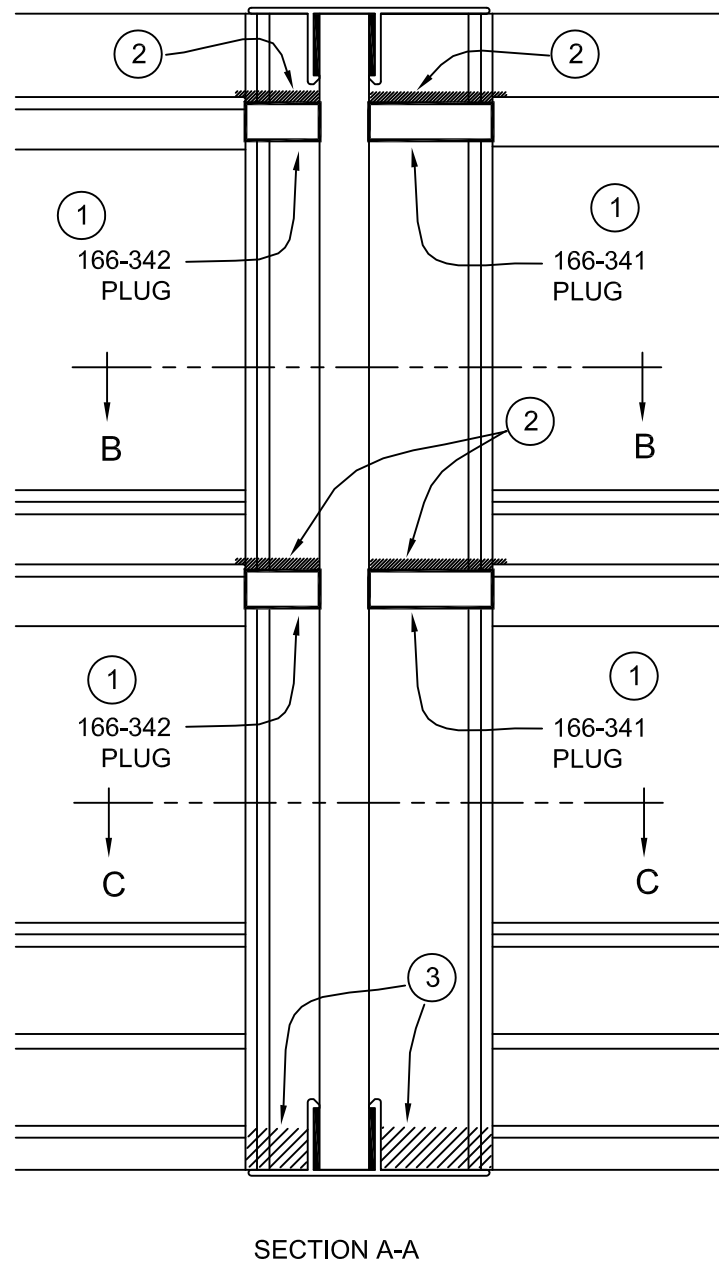
KAWNEER 1600 SYSTEM 5 INSTALLATION - MALE/FEMALE VERTICAL - EXTERIOR PRESSURE PLATE GLAZED	PART NUMBER 166-979 7 OF 14	95488-31 07/25/07
	DRAWING:	ORDER:
	SHT:	ANCHOR AND INSTALL CLOSURES PER SHOP DRAWINGS
	ANCHOR AND INSTALL CLOSURES PER SHOP DRAWINGS	

INSTALL AND SEAL JOINT PLUGS

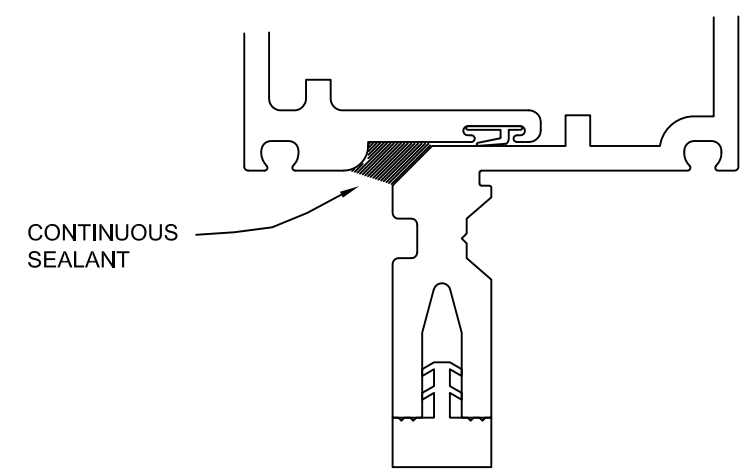
CLEAN JOINTS PER SEALANT
MANUFACTURER'S RECOMMENDATIONS

TOOL ALL SEALANT

- 1 INSTALL JOINT PLUGS SETTING INTO SEALANT - PRESS FIT INTO PLACE
- 2 SEAL OVER JOINT PLUG FILLING ENTIRE POCKET AND ALL GROOVES
TOOL SEALANT FLAT AS POSSIBLE SO GLAZING POCKETS WILL NOT BE BLOCKED
- 3 SILL ENTIRE SILL POCKET CAVITY
FILLING ALL GROOVES



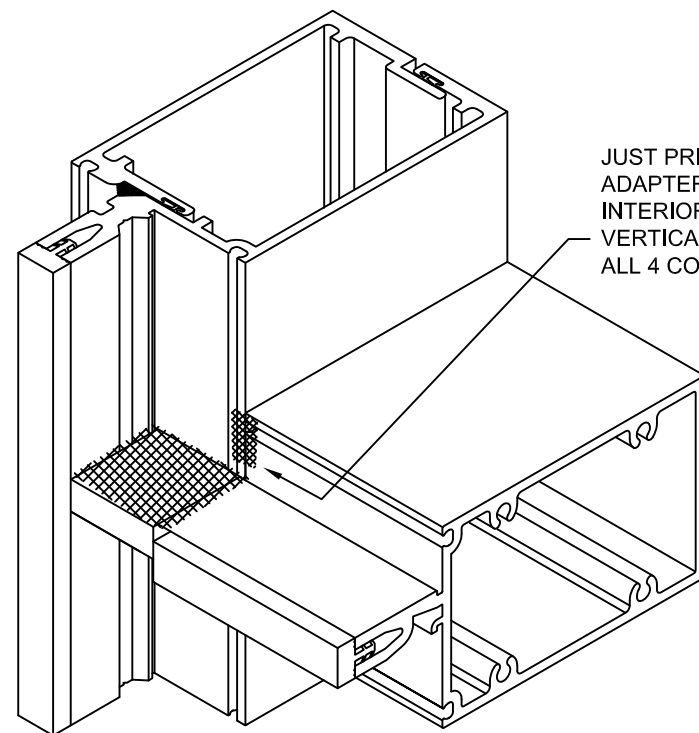
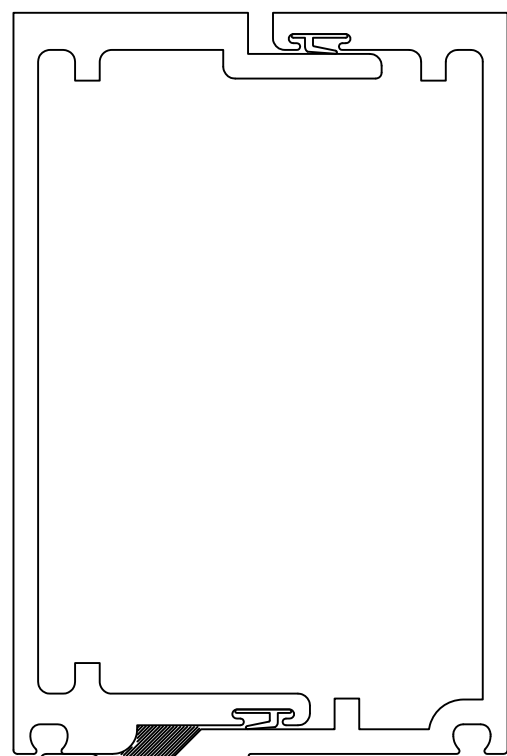
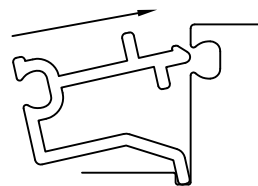
SEAL VERTICAL JOINT AT FACE OF
MALE/FEMALE VERTICAL



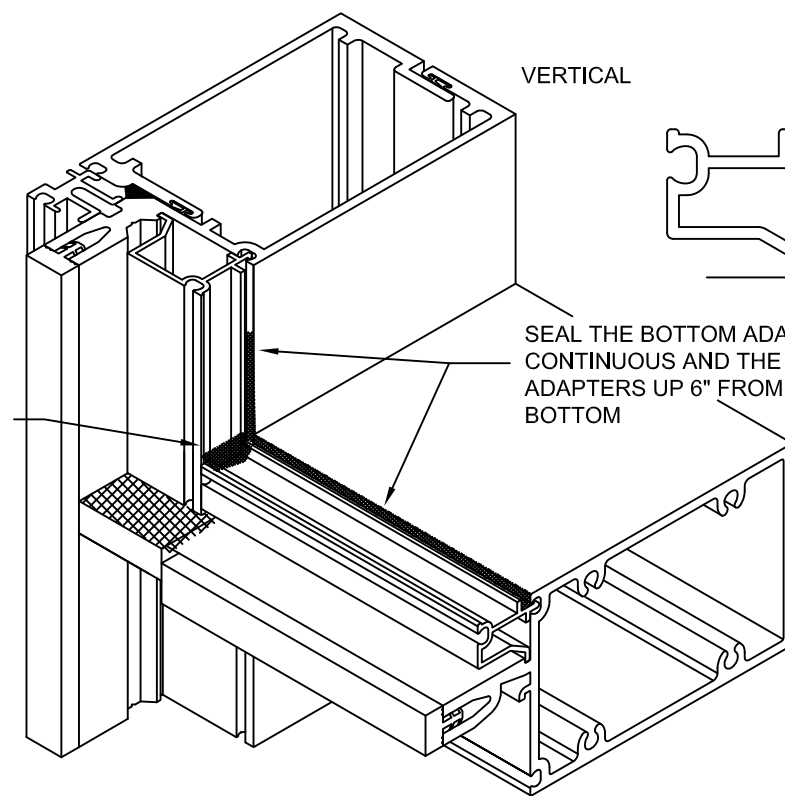
KAWNEER 1600 SYSTEM 5 INSTALLATION - MALE/FEMALE VERTICAL - EXTERIOR PRESSURE PLATE GLAZED	95488-31 07/25/07
	DRAWING:
	ORDER:
	SHT:

INSTALL 1/4" INFILL ADAPTERS

INSTALL VERTICAL ADAPTERS FIRST



JUST PRIOR TO INSTALLING ADAPTERS SEAL FACE OF INTERIOR HORIZONTAL TO VERTICAL JOINT ALL 4 CORNERS



VERTICAL

SEAL

SEAL THE BOTTOM ADAPTER CONTINUOUS AND THE JAMB ADAPTERS UP 6" FROM THE BOTTOM

SEAL ADAPTER CORNERS

INTERMEDIATE HORIZONTAL

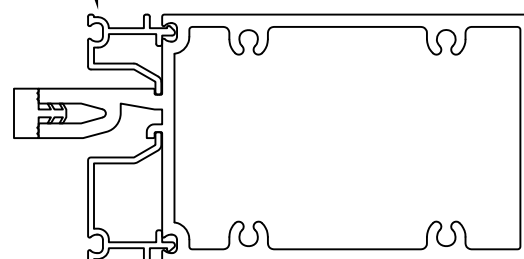
INSTALL ADAPTER 166-090 USING SCREWS 028-337 #10 x 3/4" FL HD TYPE B USE HOLES PREVIOUSLY PREPARED

166-090

028-337

POCKET ADAPTER 163-006

INTERMEDIATE HORIZONTAL

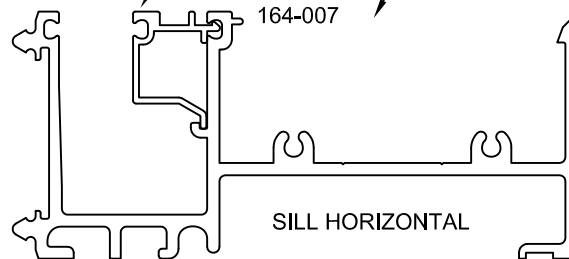


POCKET ADAPTER 163-007

NOTE PART NUMBER PREFIX IS DIFFERENT

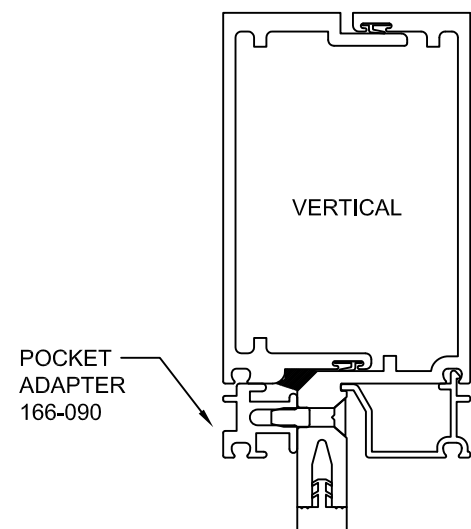
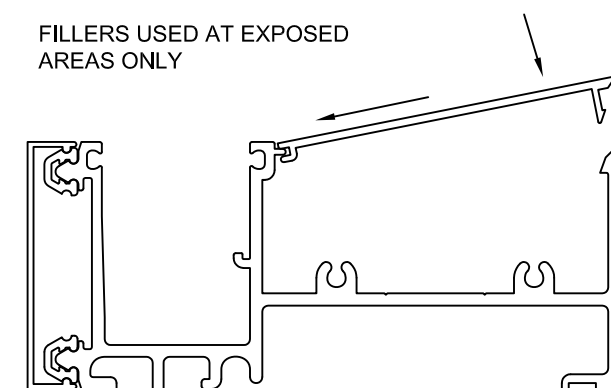
POCKET ADAPTER 164-007

SILL HORIZONTAL



INSTALL INTERIOR FILLERS WHERE APPLICABLE

FILLERS USED AT EXPOSED AREAS ONLY



POCKET ADAPTER 166-090

POCKET ADAPTER 163-007

KAWNEER 1600 SYSTEM 5
INSTALLATION - MALE/FEMALE
VERTICAL - EXTERIOR PRESSURE
PLATE GLAZED

PART NUMBER 166-979 9 OF 14

95488-31
07/25/07

DRAWING:

ORDER:

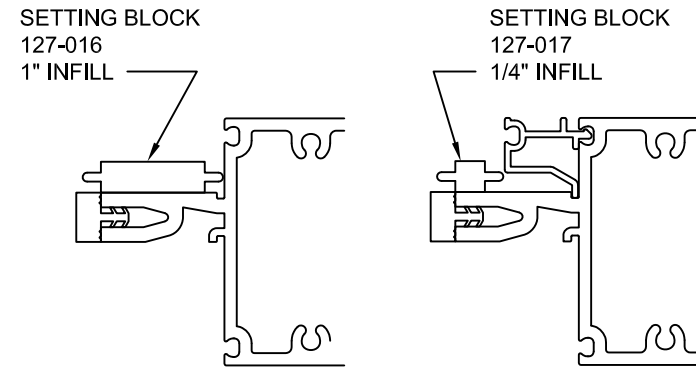
SHT:

INSTALL SETTING BLOCKS AND INTERIOR GASKETS

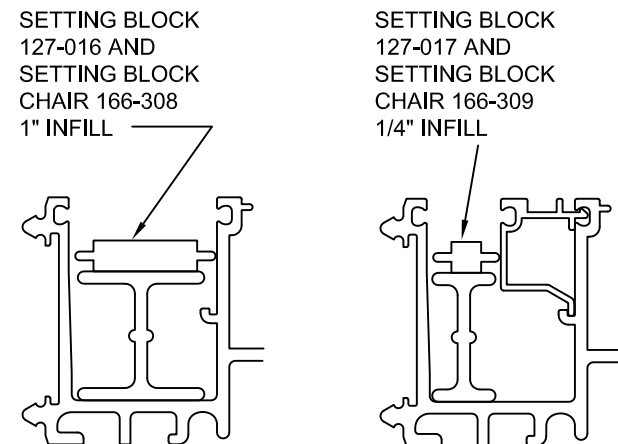
IT IS ESSENTIAL THAT ALL GUTTERS AT HORIZONTALS BE CLEANED PRIOR TO GLAZING.

THIS IS NECESSARY TO AVOID CLOGGING OF WEEP SYSTEMS AS WELL AS STAINING OF EXTERIOR METAL AND GLASS SURFACES.

INSTALL SETTING BLOCKS LOCATING PER APPROVED SHOP DRAWINGS.

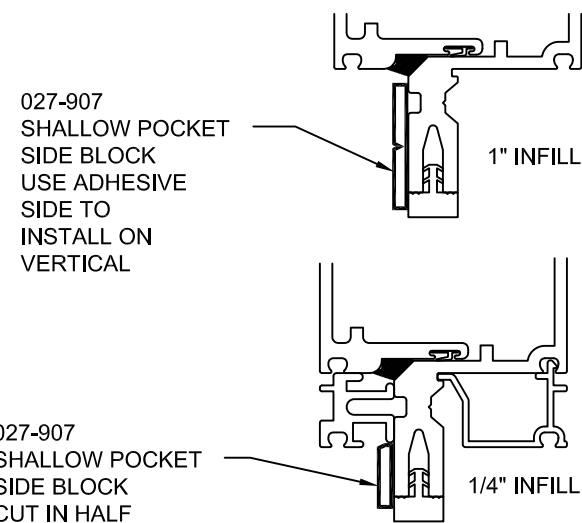


INTERMEDIATE HORIZONTALS



SILL HORIZONTALS

INSTALL SIDE BLOCKS AT SHALLOW POCKET. LOCATE AT CENTER OF GLASS HEIGHT.



INSTALL INTERIOR GASKETS

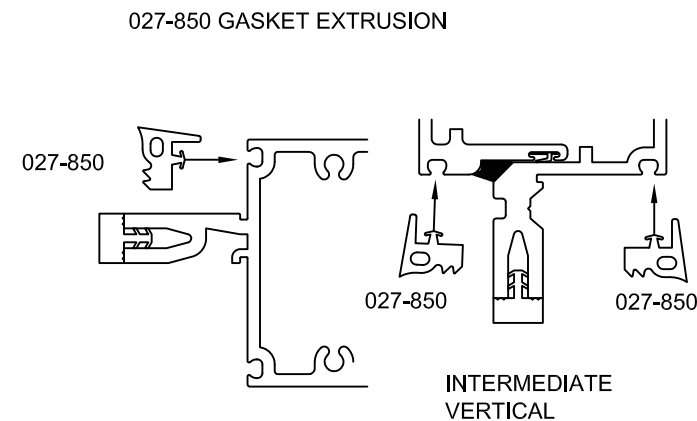
GASKET SHOULD BE INSTALLED JUST PRIOR TO GLASS TO AVOID CONTAMINATION BY JOB SITE DEBRIS. POCKETS SHOULD BE CLEAN.

IN TEMPERATURES COLDER THAN 50 DEGREES F, ARRANGEMENTS SHOULD BE MADE TO KEEP THE GASKETS WARM UNTIL INSTALLATION OF GASKETS AND GLASS. THIS WILL PREVENT EXCESSIVE GLAZING PRESSURE ON THE GLASS EDGE DUE TO COLD, STIFF GASKETS.

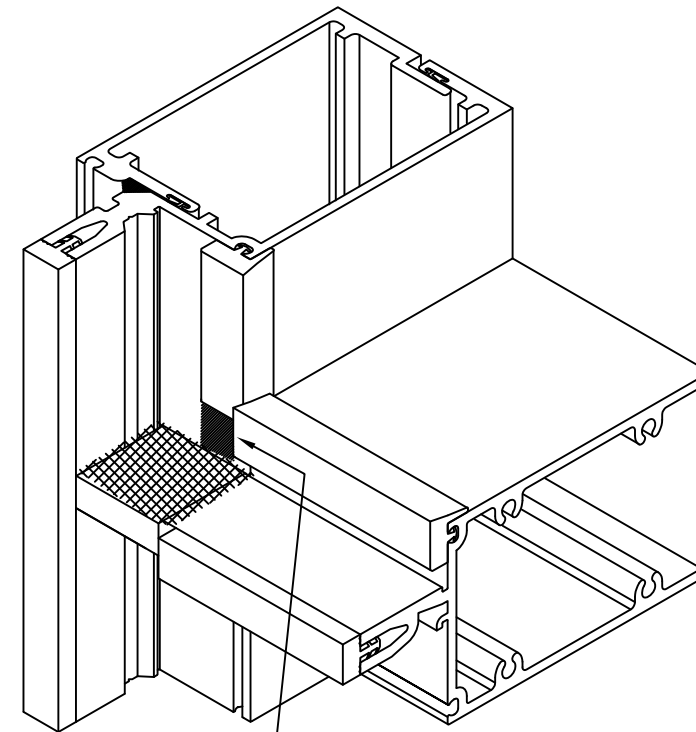
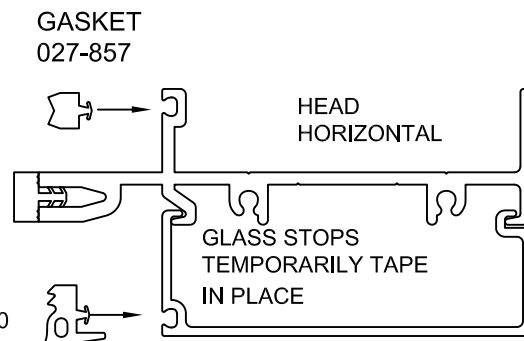
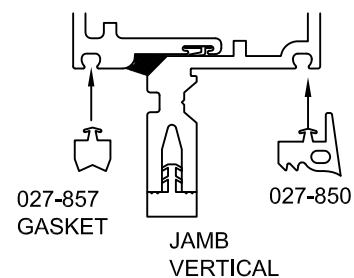
GASKETS CAN BECOME DEFORMED DURING STORAGE IN CARTONS. REMOVE GASKETS FROM CARTONS SEVERAL HOURS PRIOR TO USE AND ALLOW TO LAY FLAT OR HANG OVER RACK. TEMPERATURES SHOULD BE AT LEAST 50 DEGREES F.

GASKET INSTALLED LENGTH TO BE DAYLITE OPENING. GASKETS TO BE CUT LONG FOR SOME "CROWD-IN". GASKETS SHOULD NEVER BE "STRETCHED TO FIT".

"CROWD-IN" TO BE 1/8" PER FOOT UP TO 5'-0", 3/16" PER FOOT UP TO 8'-0" AND 1/4" PER FOOT OVER 8'-0".



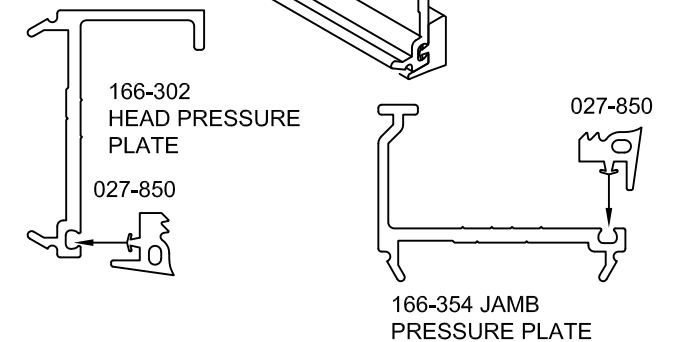
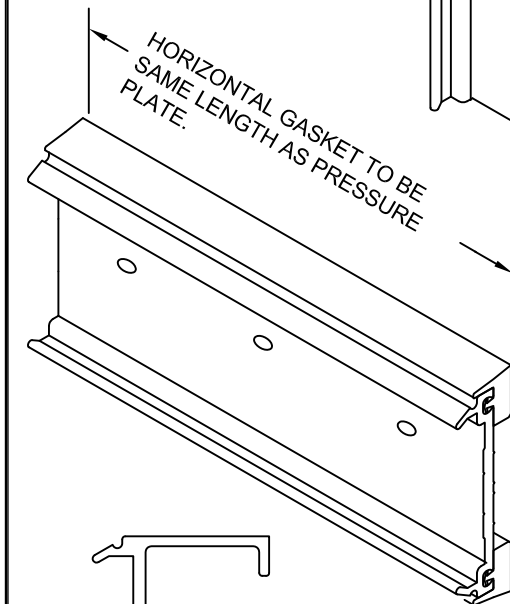
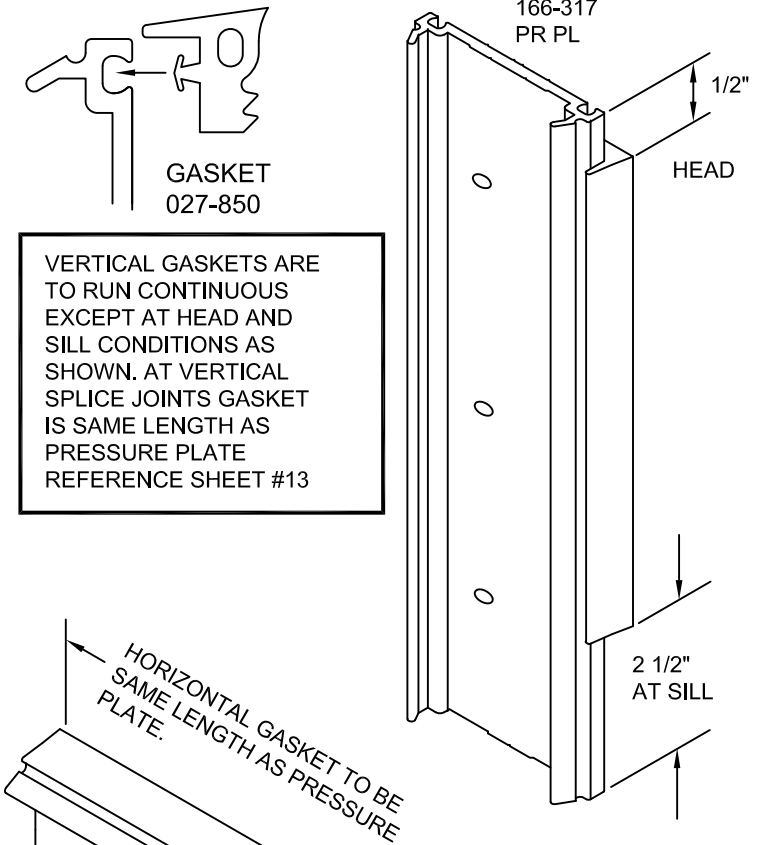
INTERMEDIATE HORIZONTAL



SEAL ALL 4 CORNERS OF INTERIOR GASKET CORNERS

INSTALL EXTERIOR GASKETS INTO PRESSURE PLATES

REFERENCE GASKET NOTES FOR INTERIOR GASKETS

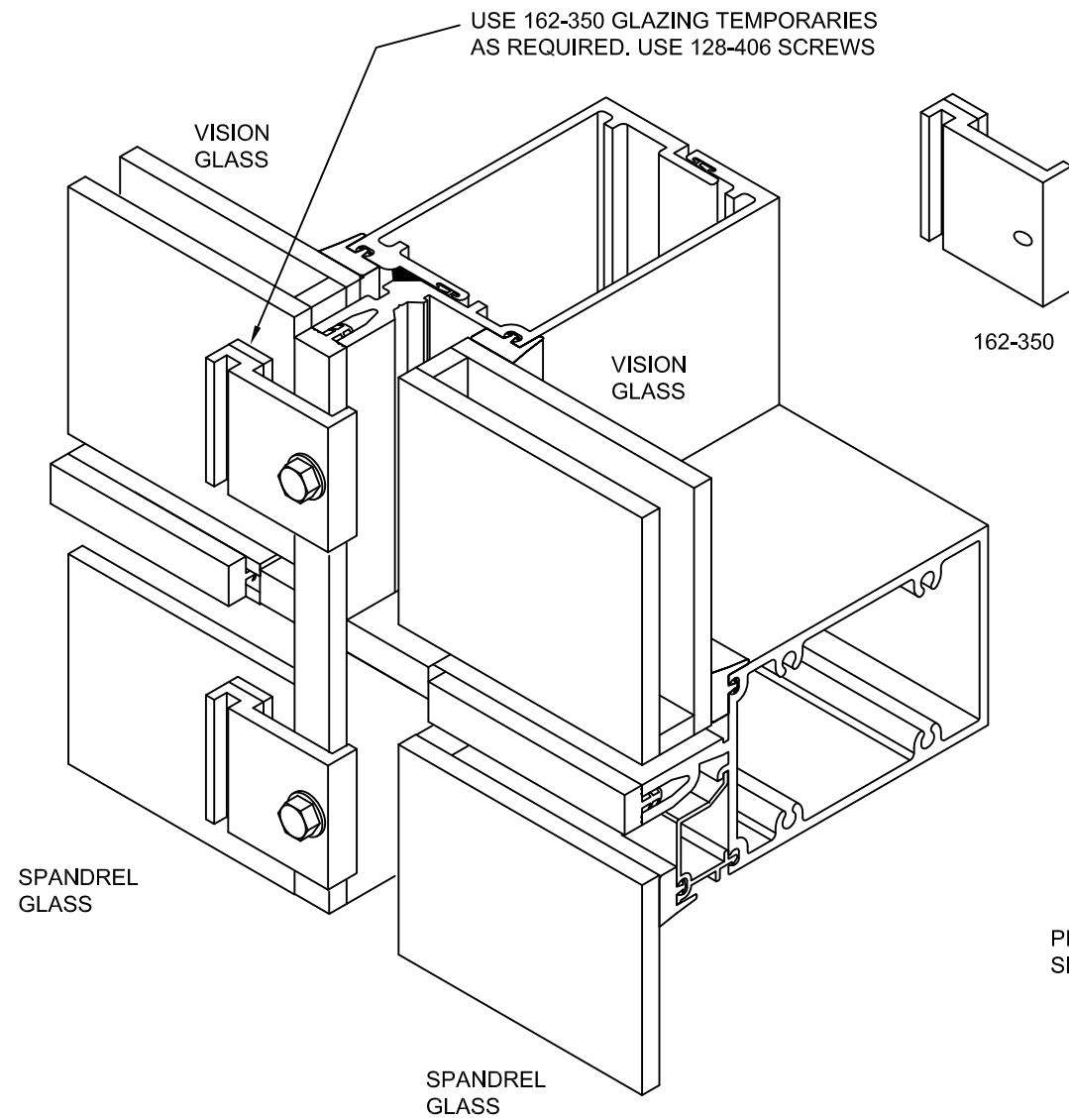


KAWNEER 1600 SYSTEM 5
 INSTALLATION - MALE/FEMALE
 VERTICAL - EXTERIOR PRESSURE
 PLATE GLAZED

PART NUMBER
 166-979 10 OF 14

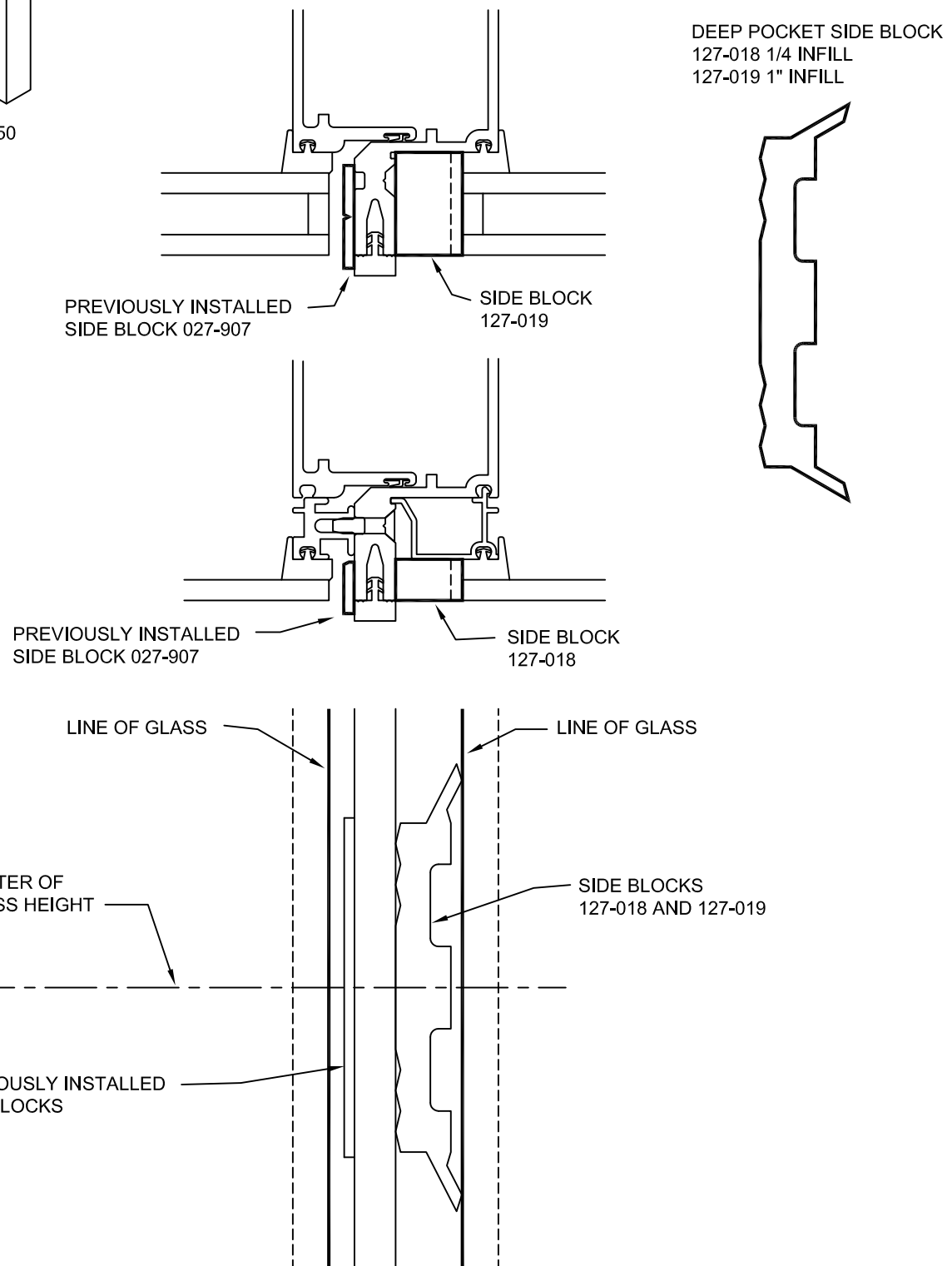
95488-31
 07/25/07
 DRAWING:
 ORDER:
 SHT:

INSTALL GLASS AND GLAZING TEMPORARIES



MAXIMUM TEMPORARY SPACING IS 30".
IF MORE THAN A 50 MPH WIND IS EXPECTED
INSTALL PRESSURE PLATES

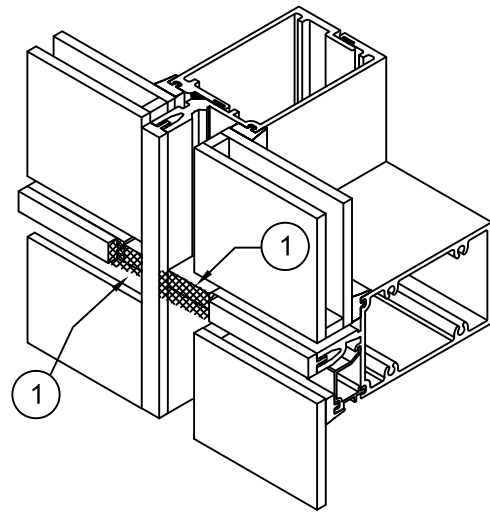
INSTALL DEEP POCKET SIDE BLOCK



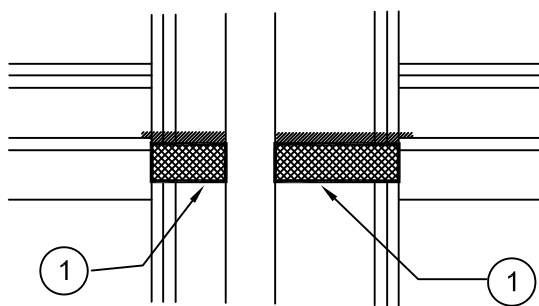
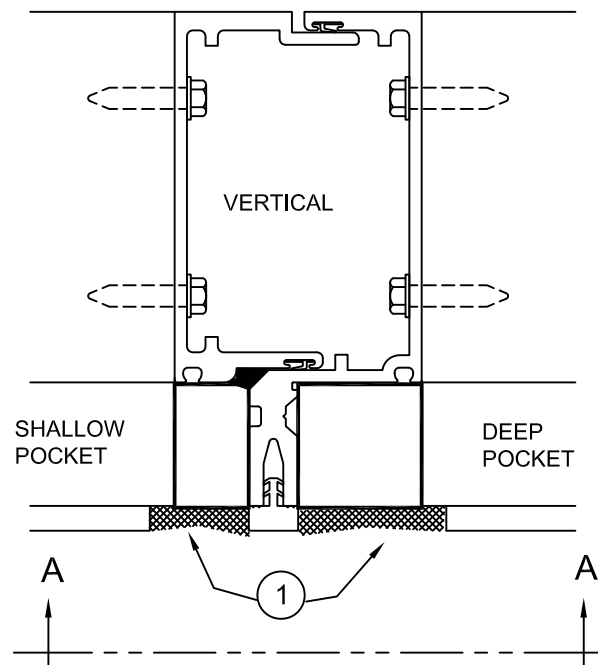
KAWNEER 1600 SYSTEM 5 INSTALLATION - MALE/FEMALE VERTICAL - EXTERIOR PRESSURE PLATE GLAZED	PART NUMBER 166-979 11 OF 14	95488-31 07/25/07
	DRAWING:	ORDER:
	SHT:	ORDER:
	SHT:	ORDER:

INSTALL EXTERIOR PRESSURE PLATES

1 JUST BEFORE INSTALLING PRESSURE PLATES APPLY A GENEROUS AMOUNT OF SEALANT TO THE FACE OF THE JOINT PLUGS. THIS SEALANT TO JOINT WITH THE JOINT PLUG SEALS DONE ON SHEET #8



CLEAN JOINTS PER SEALANT MANUFACTURES RECOMMENDATIONS



SECTION A-A

VIEW AT INTERMEDIATE HORIZONTAL HEAD/SILL SIMILAR SEE SHEET #8

2  RECOMMEND USING TORQUE LIMIT TOOL 162-399 SEE NOTE BELOW

NOTE - THE TORQUE LIMIT TOOL WAS DESIGNED TO BE USED WITH A HAND DRIVEN DEVICE. THE TOOL CAN BE ADAPTED TO A DRILL MOTOR IF USED AT A MAXIMUM SPEED OF APPROX. 300 RPM. HIGHER SPEEDS CAN CAUSE OVERHEATING AND AFFECT THE ACCURACY. AFTER APPROX. 1 HOUR OF TOOL USAGE CHECK TORQUE SETTINGS WITH A TORQUE WRENCH.

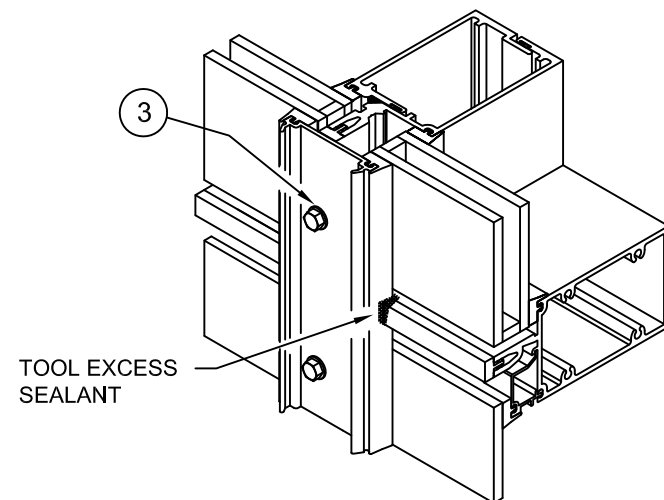
3 INSTALL PRESSURE PLATES USING SCREWS 128-406 1/4-14 X 1" HEX WASHER HEAD TYPE AB

VERTICAL SCREWS ARE TO BE LOCATED 9" ON CENTER ALWAYS LOCATE A SCREW AS CLOSE AS POSSIBLE TO A HORIZONTAL JOINT. THIS WILL PROVIDE MAXIMUM PRESSURE FOR THE CRITICAL JOINT SEALS.

INSTALL HORIZONTAL PRESSURE PLATES WITH WEEP HOLES TOWARDS THE TOP.

4 HORIZONTAL SCREWS ARE TO BE LOCATED 6" ON CENTER AND 3" MAXIMUM FROM EACH END AT EACH HORIZONTAL AND VERTICAL PRESSURE PLATE INSTALL TWO SCREWS PART WAY, THEN INSTALL THE THIRD SCREW ALL THE WAY, AND THEN TIGHTEN THE FIRST TWO SCREWS. THIS ELIMINATES LATERAL WALKING OF THE PRESSURE PLATE POSITION.

5 TORQUE ALL SCREWS TO 95 TO 100 INCH POUNDS. DURING COLD WEATHER TORQUE SCREWS TO 50 INCH POUNDS UNTIL ALL 4 SIDES HAVE BEEN CLAMPED. THEN TORQUE SCREWS TO 95 TO 100 INCH POUNDS.



TOOL EXCESS SEALANT

HOW TO SET TORQUE LIMIT

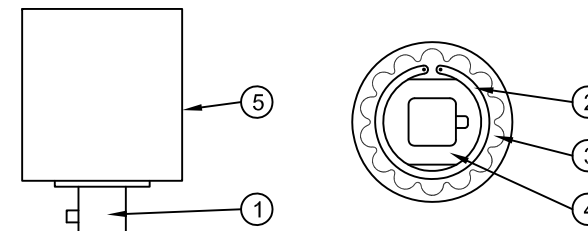
1. ATTACH ANY CALIBRATED TORQUE INDICATOR TO OUTPUT STUB (1) AND DETERMINE PRESENT TORQUE SETTING WHILE HOLDING THE BODY (5), OR VICE-VERSA.

2. REMOVE SNAP RING (2) AND LOCKING PLATE (3).

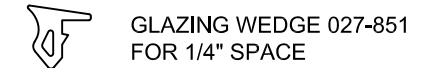
3. ADJUST NUT (4) WITH OPEN-END WRENCH : CLOCKWISE TO INCREASE TORQUE, COUNTER-CLOCKWISE TO DECREASE TORQUE.

4. OBTAIN NEW TORQUE READING WITH THE CALIBRATED TORQUE INDICATOR. REPEAT PRECEDING STEP IF MORE ADJUSTMENT IS NECESSARY TO REACH DESIRED LIMIT.

5. REPLACE LOCKING PLATE INTO NOTCHES AND INSTALL SNAP RING. IF LOCKING PLATE DOES NOT "SEAT", MOVE THE ADJUSTING NUT SLIGHTLY UNTIL IT DROPS IN PLACE. THE DIRECTION IS BEST DETERMINED BY WHETHER A MINIMUM TORQUE APPLICATION OR A MAXIMUM ONE IS DESIRED.



INSTALL EXTERIOR GLAZING WEDGE GASKET AT SILL HORIZONTAL



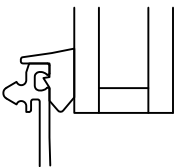
IN TEMPERATURES COLDER THAN 50 DEGREES F. ARRANGEMENTS SHOULD BE MADE TO KEEP THE GASKETS WARM UNTIL INSTALLATION OF GASKETS AND GLASS. THIS WILL PREVENT EXCESSIVE GLAZING PRESSURE ON THE GLASS EDGE DUE TO COLD, STIFF GASKETS.

GASKETS CAN BECOME DEFORMED DURING STORAGE IN CARTONS. REMOVE GASKETS FROM CARTONS SEVERAL HOURS PRIOR TO USE AND ALLOW TO LAY FLAT OR HANG OVER RACK. TEMPERATURES SHOULD BE AT LEAST 50 DEGREES F.

APPLY WEDGE GASKETS IN THE SHALLOW POCKET SIDES FIRST TO REDUCE ANY POSSIBLE ROTATION OF THE APPLIED PRESSURE PLATE.

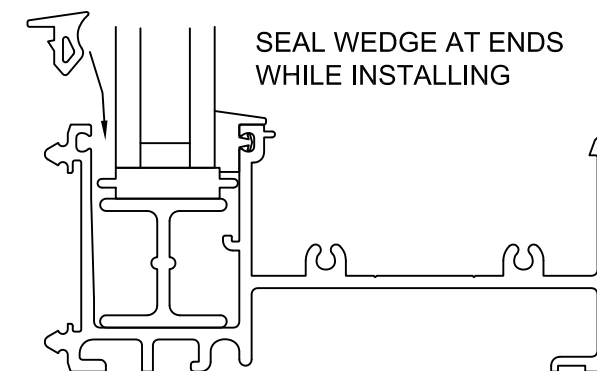
WHEN STARTING THE WEDGE GASKET THE BEST PLACE TO START IS NEAR A TEMPORARY. CUT THE WEDGE 1/8" TO 1/4" PER FOOT LONG FOR GASKET "CROWD-IN". THE "CROWD-IN" TO BE BETWEEN STARTING POINTS AND AT CORNERS. DO NOT STRETCH TO FIT. SEAL CORNERS.

IT IS IMPORTANT THE WEDGE GASKET BE COMPLETELY SEATED WHEN INSTALLED. A GOOD CHECK IS TO LIFT UP THE TRIMLIP TO SEE HOW IT IS INSTALLED.



WATER MAY BE USED TO LUBRICATE WEDGE GASKET. BEFORE SEALING CORNERS WIPE GASKET AND CORNER WITH A CLEAN RAG. BEST METHOD IS TO LEAVE CORNERS OUT FOR SOME TIME TO LET WATER EVAPORATE AND WIPE CLEAN.

IF THE INSTALLATION OF THE WEDGE REQUIRES EXCESSIVE FORCE OR THE WEDGE DOES NOT PROVIDE ENOUGH COMPRESSION ON THE EXTERIOR FIXED GASKET, CONTACT YOUR KAWNEER PROJECT MANAGER IMMEDIATELY.



KAWNEER 1600 SYSTEM 5
 INSTALLATION - MALE/FEMALE
 VERTICAL - EXTERIOR PRESSURE
 PLATE GLAZED

PART NUMBER
 166-979 12 OF 14

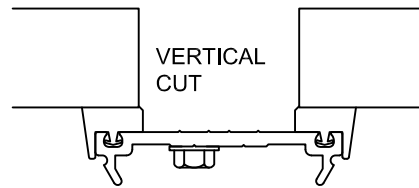
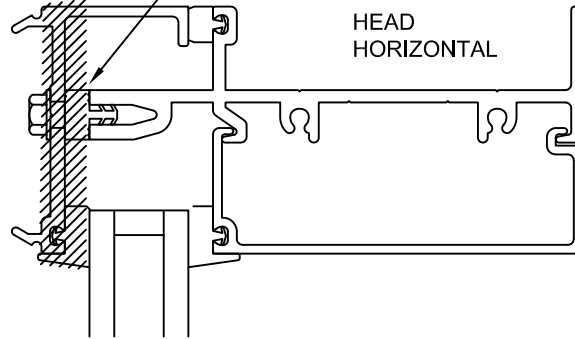
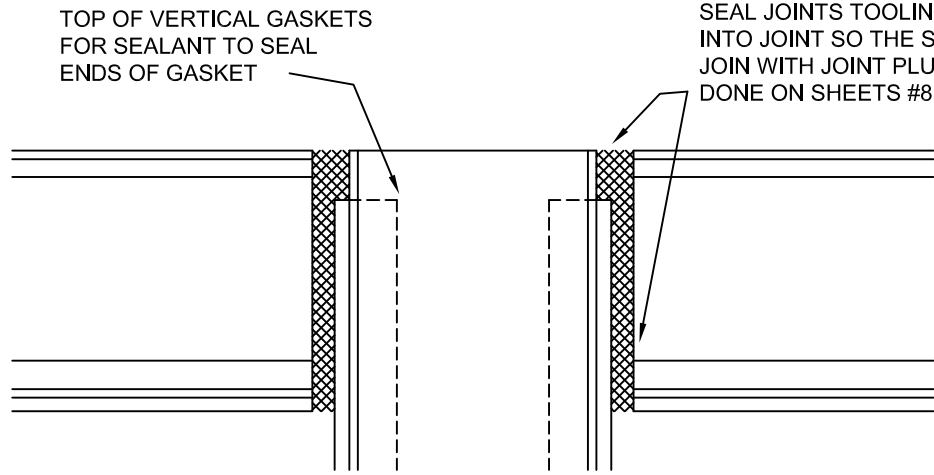
95488-31
 07/25/07
 DRAWING:
 ORDER:
 SHT:

SEAL EXTERIOR PRESSURE PLATES

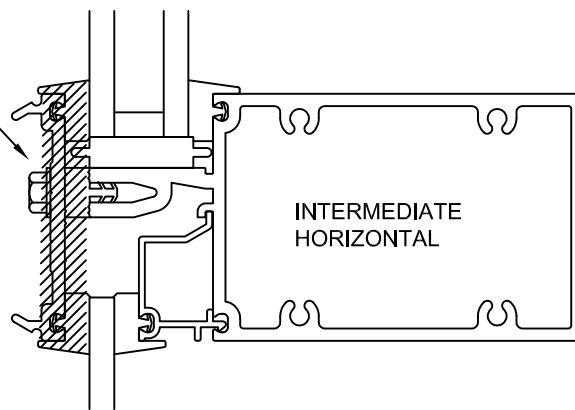
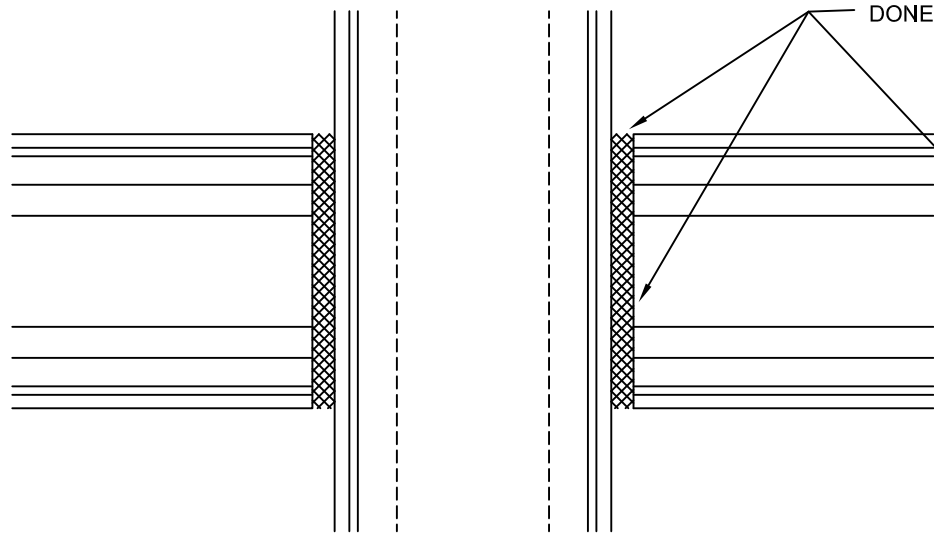
TOOL ALL SEALANT

CLEAN JOINTS PER SEALANT MANUFACTURER'S RECOMMENDATIONS

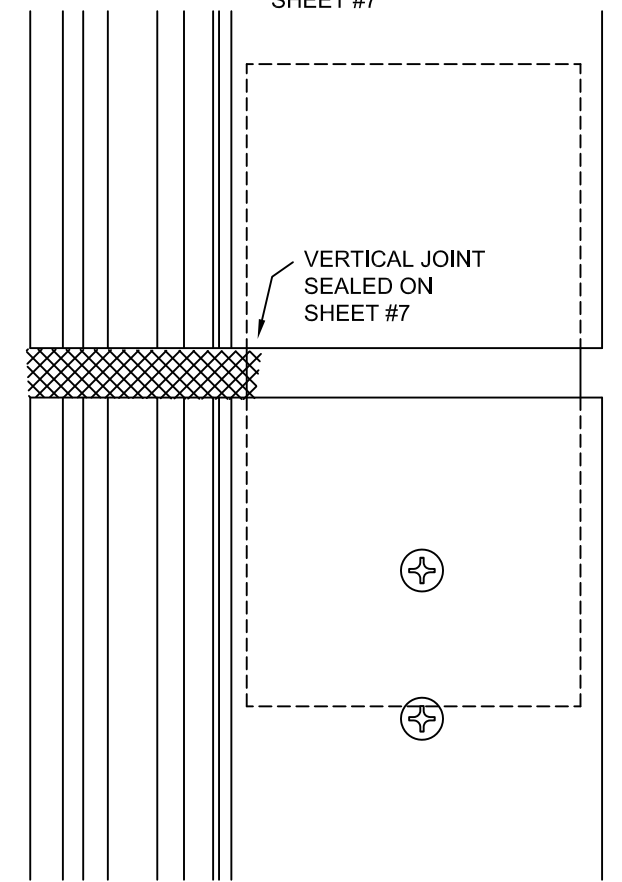
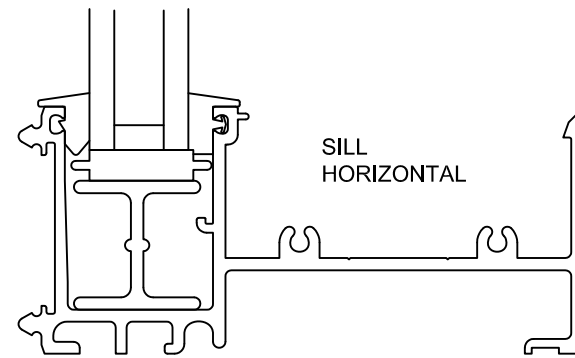
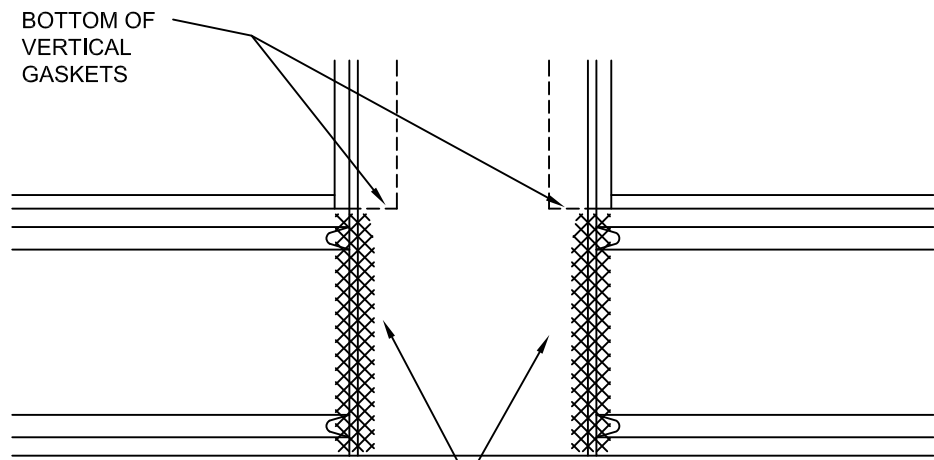
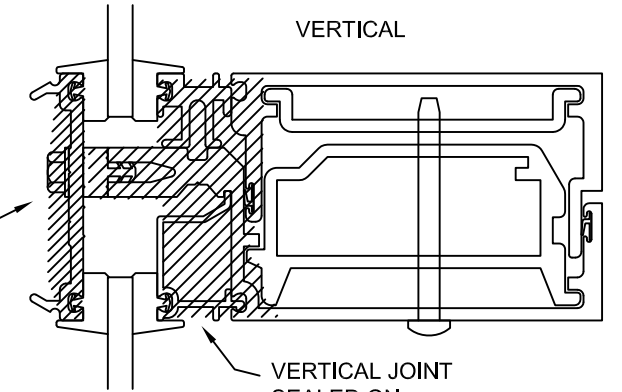
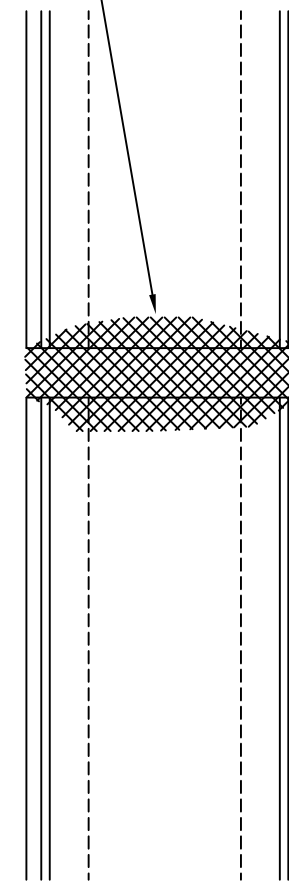
RECOMMEND SEALS BE DONE JUST BEFORE INSTALLING COVERS SO SEALANT WILL NOT INTERFERE WITH SNAP



SEAL JOINTS TOOLING SEALANT INTO JOINT SO THE SEAL WILL JOIN WITH JOINT PLUG SEALS DONE ON SHEETS #8 AND #12



SEAL VERTICAL PRESSURE PLATE JOINT TOOLING SEALANT ONTO FACE TO FORM A BAND-AID SEAL

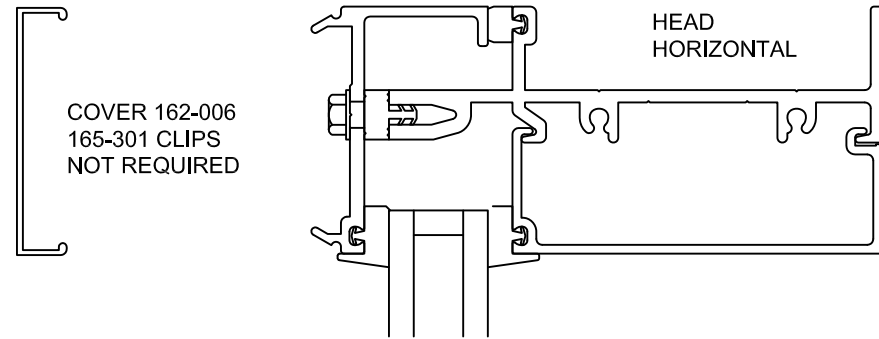


THESE JOINTS WERE SEALED AT ASSEMBLY AND INSTALLATION FACE SEAL AS REQUIRED

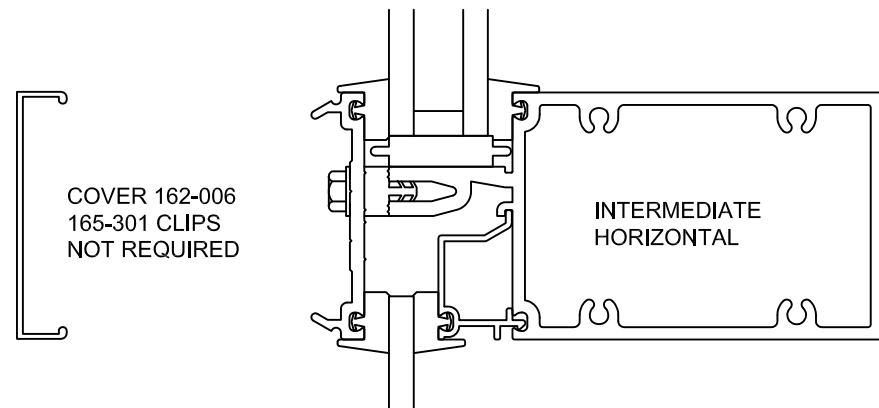
KAWNEER 1600 SYSTEM 5 INSTALLATION - MALE/FEMALE VERTICAL - EXTERIOR PRESSURE PLATE GLAZED	95488-31 07/25/07
	DRAWING:
	ORDER:
	PART NUMBER 166-979 13 OF 14

INSTALL EXTERIOR COVERS

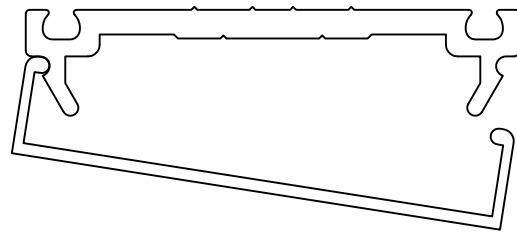
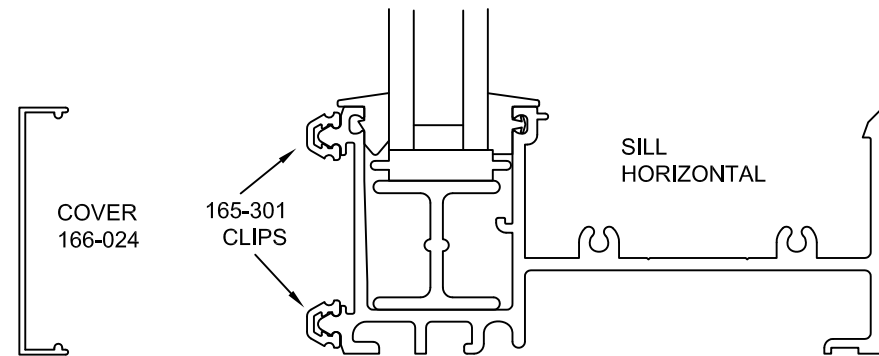
INSTALL COVERS THAT RUN THRU FIRST



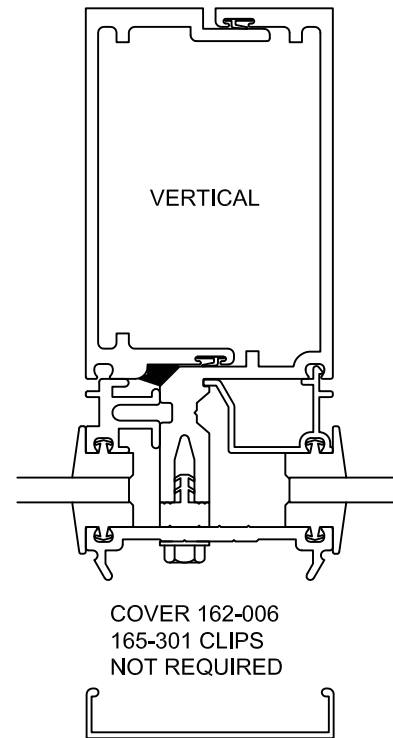
INSTALL HORIZONTAL COVERS WITH THE WEEP HOLES AT THE BOTTOM.



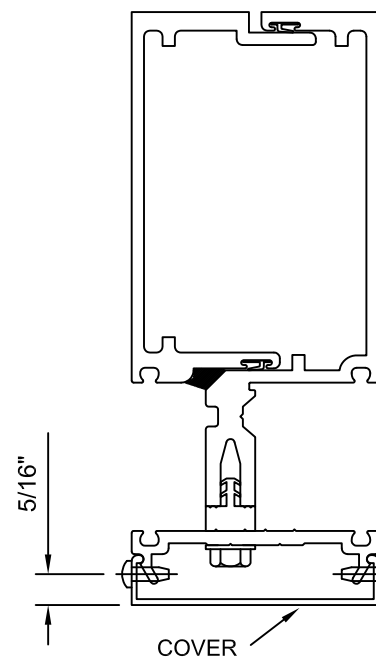
INSTALL 165-301 THERMAL CLIPS AT EACH END AND APPROX 18" ON CENTER FOR THE FRAME MEMBER THAT RUNS THRU DO NOT INSTALL CLIPS AT VERTICAL/HORIZONTAL INTERSECTIONS



ENGAGE ONE SIDE OF COVER AND INSTALL USING WOOD BLOCKING AND Mallet



EXTERIOR COVER PINNING



PINNING OF ALL VERTICAL COVERS IS REQUIRED FOR BOTH SIDES. DRILL A .106" DIA. HOLE (#36 DRILL) AND INSTALL 128-920 SCREWS #6 x 3/8" PAN HEAD TYPE B LOCATE PINNING AT A HORIZONTAL CLOSEST TO THE COVER HEIGHT CENTER.

AT SPLICE JOINT SPLICE LOWER COVER WILL HAVE SHOP APPLIED SPLICE SLEEVE

LOWER COVER
SPLICE SLEEVE

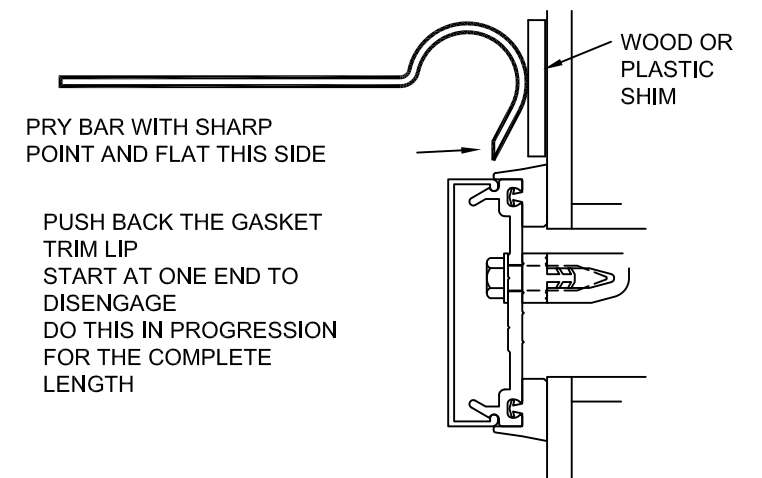
RE-GLAZING

EXTERIOR GLAZED LITES

ORDER NEW

- 1 - FIXED GASKET MATERIAL
- 2 - WEDGE GASKET MATERIAL AND SILL
- 4 - NEW EXTERIOR COVER IF EXISTING COVER CAN NOT BE SAVED

COVERS CAN BE SAVED IF TOLERANCES ARE NOT TOO TIGHT AND THE COVER IS REMOVED WITH EXTREME CARE



PRY BAR WITH SHARP POINT AND FLAT THIS SIDE

PUSH BACK THE GASKET TRIM LIP START AT ONE END TO DISENGAGE DO THIS IN PROGRESSION FOR THE COMPLETE LENGTH

NEXT REMOVE PRESSURE PLATE, GASKETS AND GLASS.

CLEAN METAL AND RE-GLAZE PER EXTERIOR GLAZING INSTRUCTIONS

KAWNEER 1600 SYSTEM 5
INSTALLATION - MALE/FEMALE
VERTICAL - EXTERIOR PRESSURE
PLATE GLAZED

PART NUMBER
166-979 14 OF 14

95488-31
07/25/07
DRAWING:
ORDER:
SHT: