

NOTES FOR 1600 SYSTEM³

WITH SSG (EXTERIOR GLAZED)

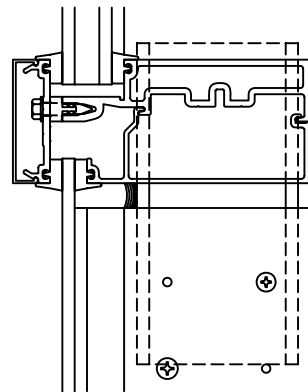
THESE INSTRUCTIONS ARE TO BE USED IN CONJUNCTION WITH INSTRUCTIONS 163-970 SYSTEM³ INSTALLATION SHEETS #1 THRU #15

UNLESS OTHERWISE SPECIFIED, IT IS RECOMMENDED THAT SILICONE SEALANT BE USED FOR ALL INTERNAL SEALS.

SEALANT MUST BE APPLIED PER THE SEALANT MANUFACTURER'S RECOMMENDATIONS AND PASS ALL ADHESION AND COMPATIBILITY TESTING. AT ALL JOINT SEALS, SEALANT MUST ADHERE TO METAL, GASKETS, THERMAL SEPARATOR AND JOINT PLUG MATERIALS. CLEAN ALL SURFACES PRIOR TO APPLICATION OF SEALANT AND PRIME WHERE NECESSARY TO ACHIEVE PROPER ADHESION.

VERTICAL MULLION SPLICE -
VERTICAL MULLIONS THAT ARE STRUCTURALLY GLAZED MUST BE SPLICED AT A HORIZONTAL. LOCATION OF THIS SPLICE MUST BE REVIEWED FOR STRUCTURAL INTEGRITY BY FACTORY ENGINEERING.

TYPICAL SPLICE LOCATION VISION OVER SPANDREL HORIZONTAL



STRUCTURAL SEAL NOTES

STRUCTURAL SILICONE SEAL - THE GLAZING INSTALLER IS RESPONSIBLE FOR SELECTING AND CONTACTING THE SILICONE MANUFACTURER TO DETERMINE WHICH TYPE OF SILICONE IS TO BE USED AND WHAT SAMPLES ARE REQUIRED TO BE SUBMITTED FOR ADHESION AND COMPATIBILITY TESTING.

THE SILICONE SEALANT SHALL NOT BE APPLIED TO KAWNEER PRODUCTS WITHOUT THE APPROVAL OF THE SILICONE MANUFACTURER AND UNTIL ALL REQUIRED TESTING IS COMPLETED AND DETAILED APPLICATION INSTRUCTIONS HAVE BEEN DELIVERED TO THE INSTALLER BY THE SILICONE MANUFACTURER.

IF YOU FIND THE SILICONE MANUFACTURER'S INSTALLATION INSTRUCTIONS ARE NOT IN ACCORDANCE WITH KAWNEER'S INSTALLATION INSTRUCTIONS, IT IS YOUR RESPONSIBILITY TO NOTIFY KAWNEER OF THIS CONFLICT PRIOR TO GLAZING.

YOUR GLASS SUPPLIER MUST BE MADE AWARE THAT THEIR GLASS WILL BE USED IN A SSG APPLICATION. THE APPLICATION MUST BE APPROVED BY THE GLASS SUPPLIER PRIOR TO GLAZING.

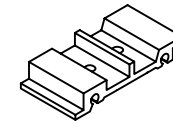
FOR ANY STRUCTURAL SILICONE GLAZED PRODUCT APPLICATION THAT IS NOT SHOWN IN KAWNEER'S STANDARD PRODUCT LITERATURE, THE APPLICATION MUST BE PRE-APPROVED BY KAWNEER.

EXTERIOR GLASS WEATHER SEAL - SEALANT TO BE A TYPE AS RECOMMENDED BY THE MANUFACTURER OF THE STRUCTURAL SEALANT BEING USED FOR THIS PROJECT.

SEALANT MUST BE APPLIED PER THE SEALANT MANUFACTURER'S RECOMMENDATIONS. WEATHER SEAL SEALANT MUST ADHERE TO EXTERIOR GASKET MATERIAL.

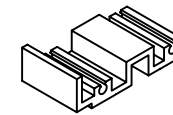
FRAME ASSEMBLY

ATTACH SHEAR BLOCKS.

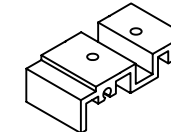


TYPICAL SHEAR BLOCKS
163-310 6" SYSTEM
163-311 7 1/2" SYSTEM
FOR INTERMEDIATE HORIZONTALS.

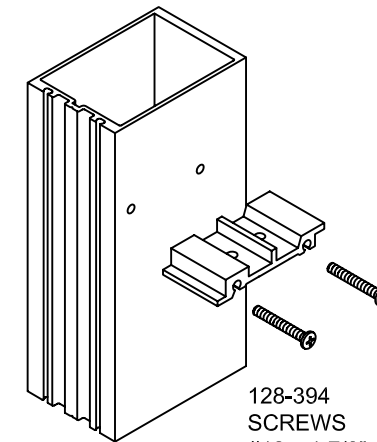
HEAD AND SILL SHEAR BLOCKS
163-312 6" SYSTEM
163-313 7 1/2" SYSTEM



HEAD POSITION

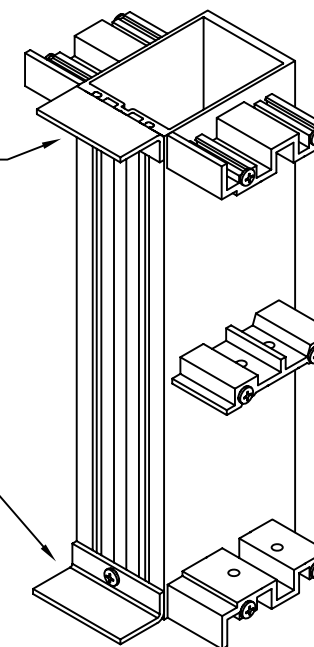


SILL POSITION



128-394 SCREWS
#12 x 1 7/8"
PAN HEAD TYPE B

FIELD INSTALLED HEAD AND SILL CAPS 163-316 FOR CONTINUATION OF PERIMETER SEAL INSTALL WITH 128-293 SCREWS #12 x 5/8" PAN HD TYPE AB



HEAD HORIZONTAL

INTERMEDIATE HORIZONTAL

SILL HORIZONTAL

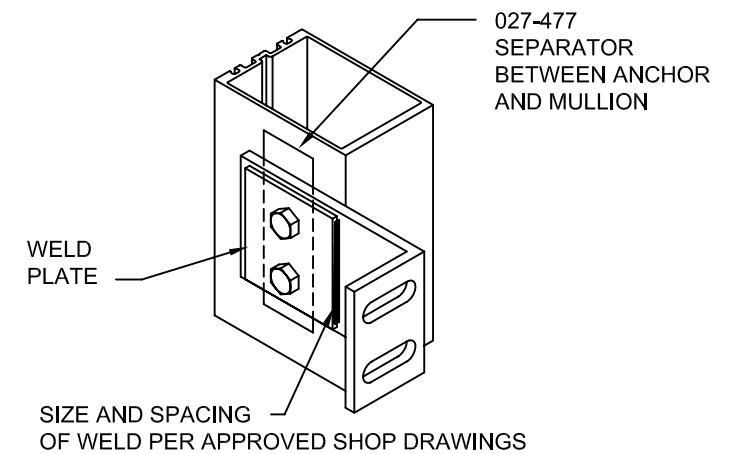
FRAME ASSEMBLY

ATTACH ANCHORS TO MULLIONS WHERE APPLICABLE.

ANCHOR PREP MAY BE FABRICATED IN THE FIELD OR FACTORY. CONSULT APPROVED SHOP DRAWINGS FOR CORRECT METHOD.

STANDARD ANCHOR PREP IS THRU-BOLTED AT INTERMEDIATE VERTICALS AND TAPPING PLATES ARE USED AT JAMB VERTICALS. REFER TO APPROVED SHOP DRAWINGS FOR CORRECT METHOD.

WHEN WELDING ANCHORS, PROTECT INSTALLED GLASS AND METAL FROM WELD SPLATTER.



027-477 SEPARATOR BETWEEN ANCHOR AND MULLION

WELD PLATE

SIZE AND SPACING OF WELD PER APPROVED SHOP DRAWINGS

DO NOT OVERTIGHTEN ANCHOR CONNECTIONS. TIGHTEN TO A "SNUG TIGHT" POSITION WITH PARTS BROUGHT INTO GOOD CONTACT. BE SURE ANY SPRING TYPE LOCK WASHERS ARE COMPRESSED. THEN TIGHTEN APPROXIMATELY 1/2 MORE TURN.

INSTALL VERTICAL MULLIONS

SIMILAR TO STEP#5 IN INSTRUCTIONS 163-970

KAWNEER EXTERIOR GLAZED

1600 SYSTEM³ WITH SSG
INSTALLATION INSTRUCTIONS

PART NO.
163-971 1 OF 5


95455-36
03/12/07

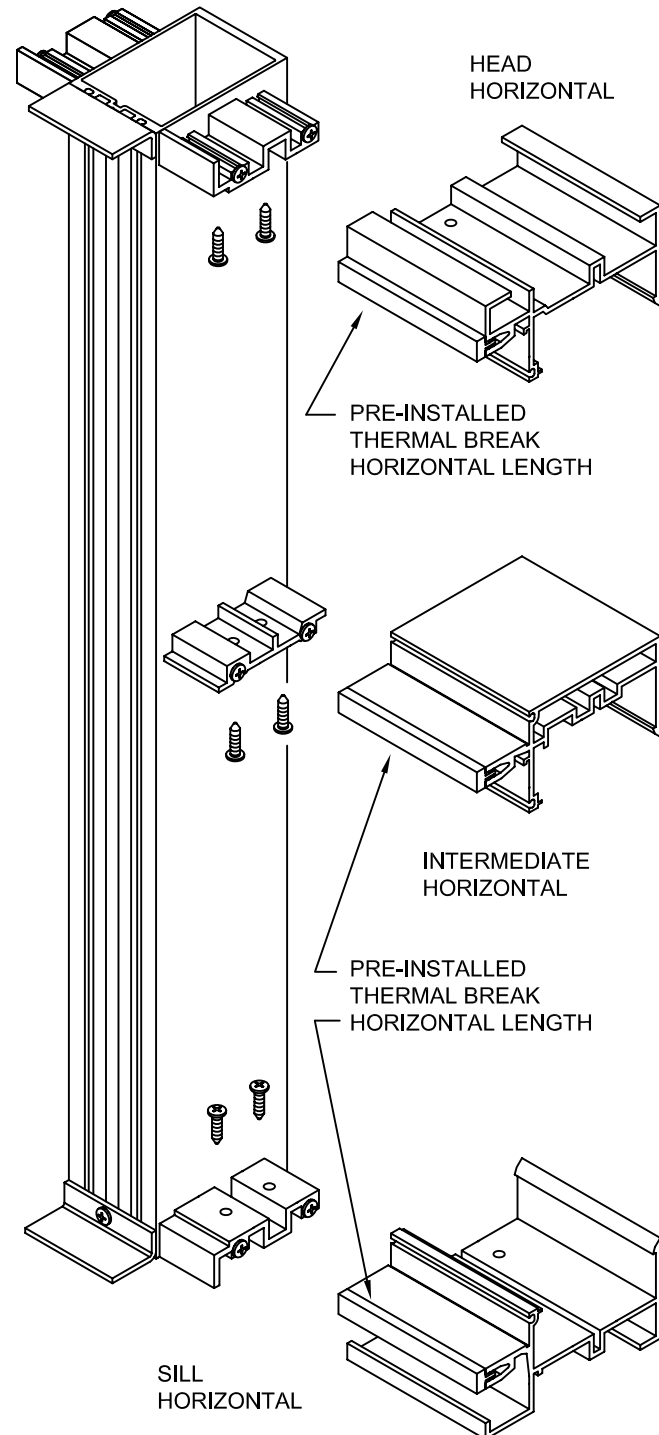
DRAWING:

ORDER:

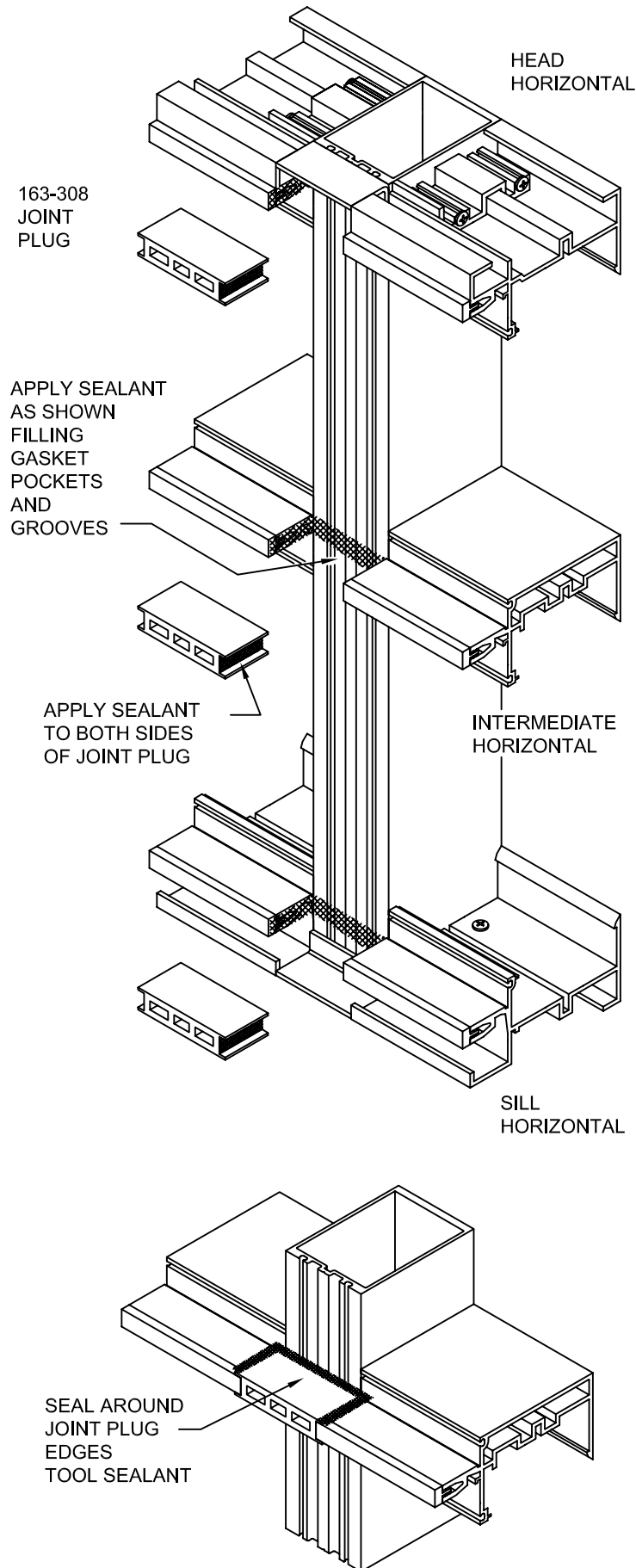
SHT:

INSTALL HEAD/SILL AND INTERMEDIATE HORIZONTALS

 163-303 THERMAL BREAK
FACTORY INSTALLED



INSTALL SSG JOINT PLUGS

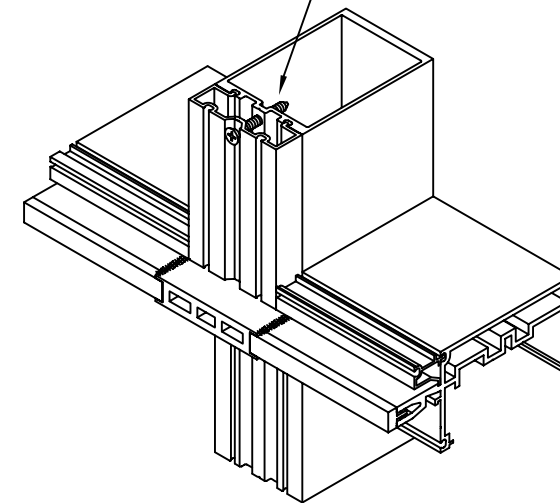


INSTALL SPANDREL ADAPTERS

BEFORE INSTALLING ADAPTERS FACE SEAL JOINTS AS SHOWN IN INSTRUCTIONS 163-970 STEP #10

INSTALL VERTICAL ADAPTER WITH 128-348 SCREWS #10 X 1-1/4" FLAT HEAD SELF DRILLING SCREW. LOCATE A MAXIMUM 6" AND A MINIMUM 4" FROM EACH END AND 9" ON CENTER

AT STEEL REINFORCING USE 128-401 #10 X 1" FLAT HEAD TYPE B SCREW. DRILL .154 DIA. #23 DRILL INTO MULLION USING ADAPTER HOLES AS A PILOT



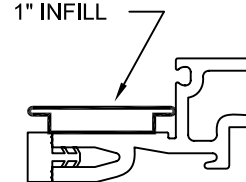
INSTALL SETTING BLOCKS

IT IS ESSENTIAL THAT ALL GUTTERS AT HORIZONTALS BE CLEANED PRIOR TO GLAZING.

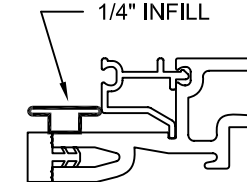
THIS IS NECESSARY TO AVOID CLOGGING OF WEEP SYSTEMS AS WELL AS STAINING OF EXTERIOR METAL AND GLASS SURFACES.

INSTALL SETTING BLOCKS LOCATING PER APPROVED SHOP DRAWINGS.

SETTING BLOCK
27-905
1" INFILL



SETTING BLOCK
27-906
1/4" INFILL



NOTE - GASKET ASSEMBLIES ARE PREFERRED IN ORDER TO MAINTAIN THE GASKET CORNERS WHEN INSTALLING THE GLASS. IF ASSEMBLIES ARE NOT USED SEAL GASKET CORNERS AND ALLOW SEALANT TO CURE SOME BEFORE INSTALLING THE GLASS.

 **KAWNEER** EXTERIOR GLAZED

1600 SYSTEM³ WITH SSG
INSTALLATION INSTRUCTIONS

PART NO.
163-971 2 OF 5

95455-36
03/12/07

DRAWING:

ORDER:

SHT:

INSTALL INTERIOR GASKETS

INSTALL INTERIOR GASKET AND INTERIOR GASKET ASSEMBLIES.

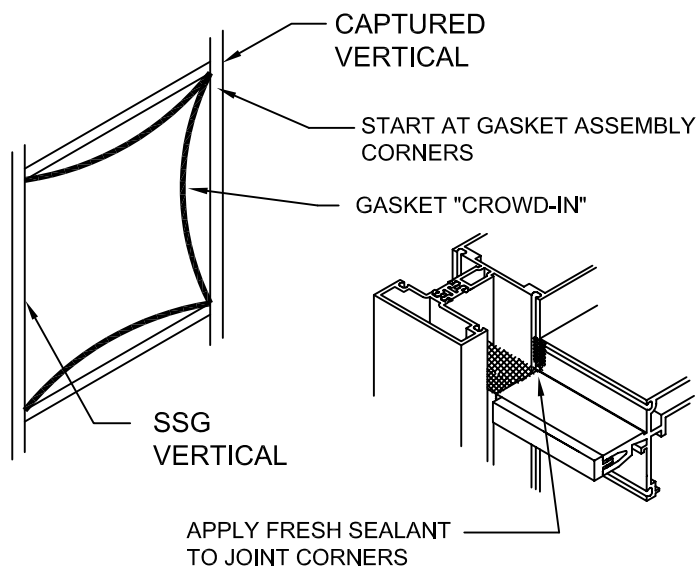
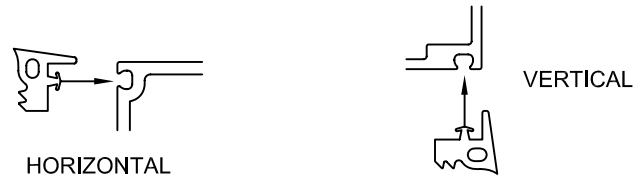
GASKETS SHOULD BE INSTALLED JUST PRIOR TO GLASS FOR AVOIDING GASKET CONTAMINATION BY JOB SITE DEBRIS.

IN TEMPERATURES COLDER THAN 50 DEGREES F. ARRANGEMENTS SHOULD BE MADE TO KEEP THE GASKETS WARM UNTIL INSTALLATION OF GASKETS AND GLASS. THIS WILL PREVENT EXCESSIVE GLAZING PRESSURE ON THE GLASS EDGE DUE TO COLD, STIFF GASKETS.

GASKETS CAN BECOME DEFORMED DURING STORAGE IN CARTONS. REMOVE GASKETS FROM CARTONS SEVERAL HOURS PRIOR TO USE AND ALLOW TO LAY FLAT OR HANG OVER RACK. TEMPERATURES SHOULD BE AT LEAST 50 DEGREES F.

INSTALL GASKET ASSEMBLIES BY STARTING AT THE CORNERS AND WORKING TOWARDS THE CENTER, MAKING SURE THE CORNERS ARE SQUARE. GASKET ASSEMBLIES WILL BE SLIGHTLY LARGE TO ALLOW FOR SOME "CROWD-IN". DO NOT STRETCH, CUT OR SPLICE GASKETS.

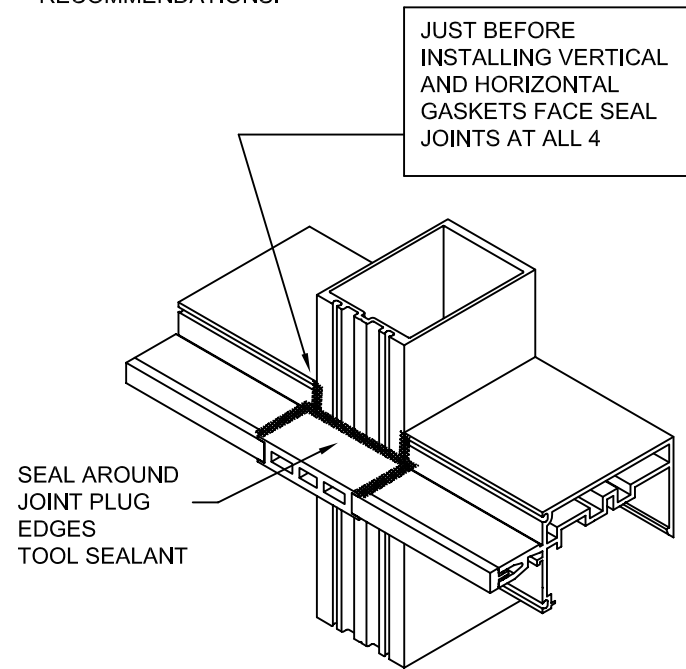
027-850 GASKET EXTRUSION / 163-302 ASSEMBLY WHICH IS A 3 SIDED ASSEMBLY AT CAPTURED VERTICALS ADJACENT TO SSG VERTICALS



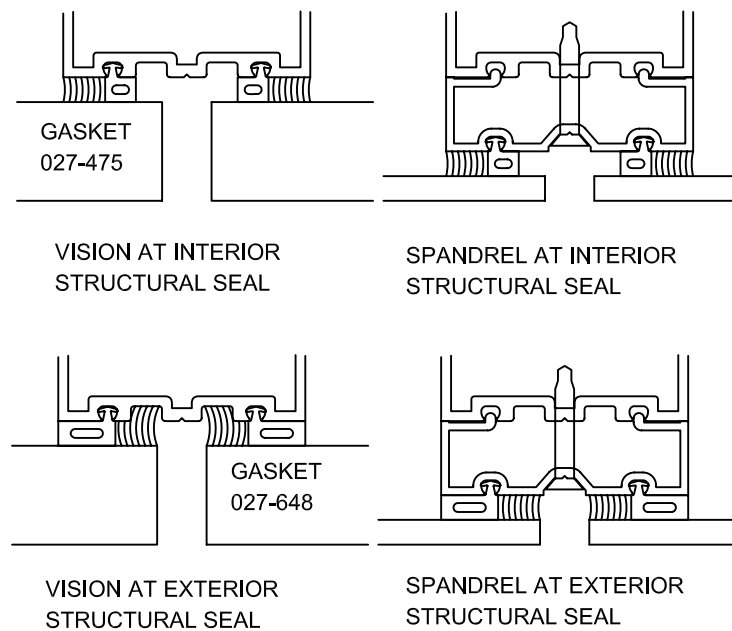
INSTALL COMPLETE GASKET ASSEMBLY THEN PULL BACK CORNERS AND APPLY SEALANT JUST PRIOR TO INSTALLING GLASS

INSTALL INTERIOR GASKETS

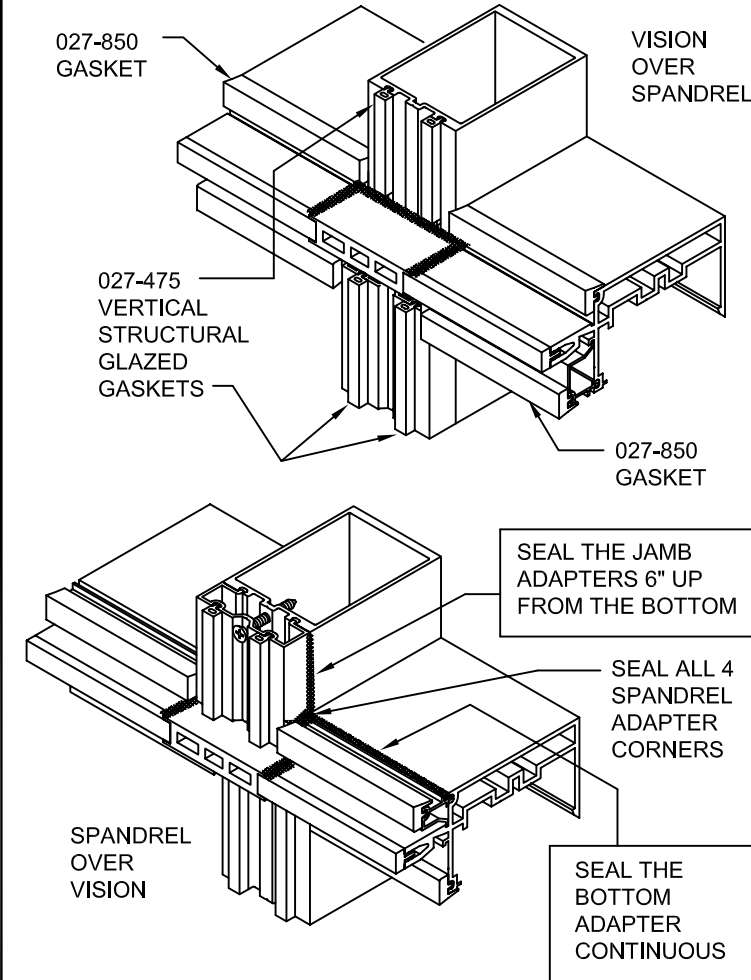
ALL SURFACES AND GROOVES MUST BE CLEANED PER THE SEALANT MANUFACTURER'S RECOMMENDATIONS.



VERTICAL GASKETS TO RUN DAYLIGHT OPENING PLUS 1 3/8"



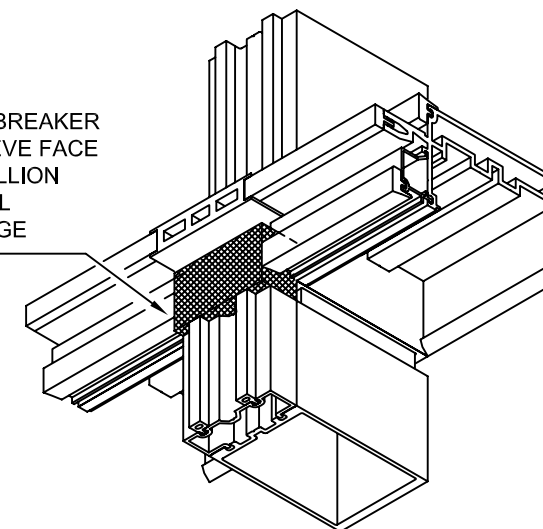
INSTALL INTERIOR GASKETS



INSTALL SPONGE AIRSEAL AT VERTICAL EXPANSION JOINT

APPLY BOND BREAKER TAPE TO SLEEVE FACE AND SEAL MULLION JOINT. INSTALL 426-318 SPONGE AIR SEAL.

USE 426-319 SPONGE AIR SEAL AT 1" INFILLS



KAWNEER EXTERIOR GLAZED

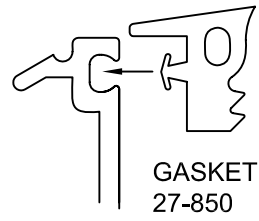
1600 SYSTEM³ WITH SSG
INSTALLATION INSTRUCTIONS

PART NO.
163-971 3 OF 5

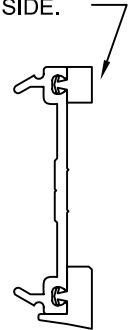
95455-36
03/12/07
DRAWING:
ORDER:
SHT:

INSTALL PRESSURE PLATE GASKETS

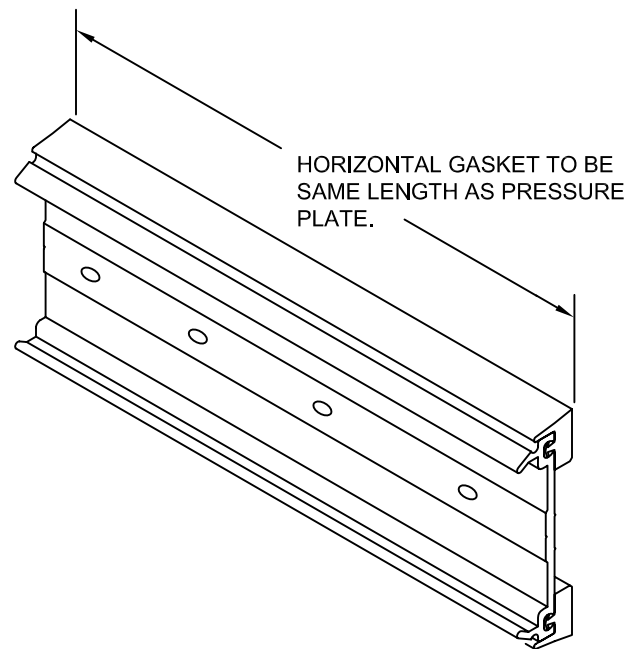
REFERENCE GASKET NOTES FOR INTERIOR GASKETS.



PERIMETER PRESSURE PLATES RECEIVE GASKET 27-916 AT ONE SIDE.

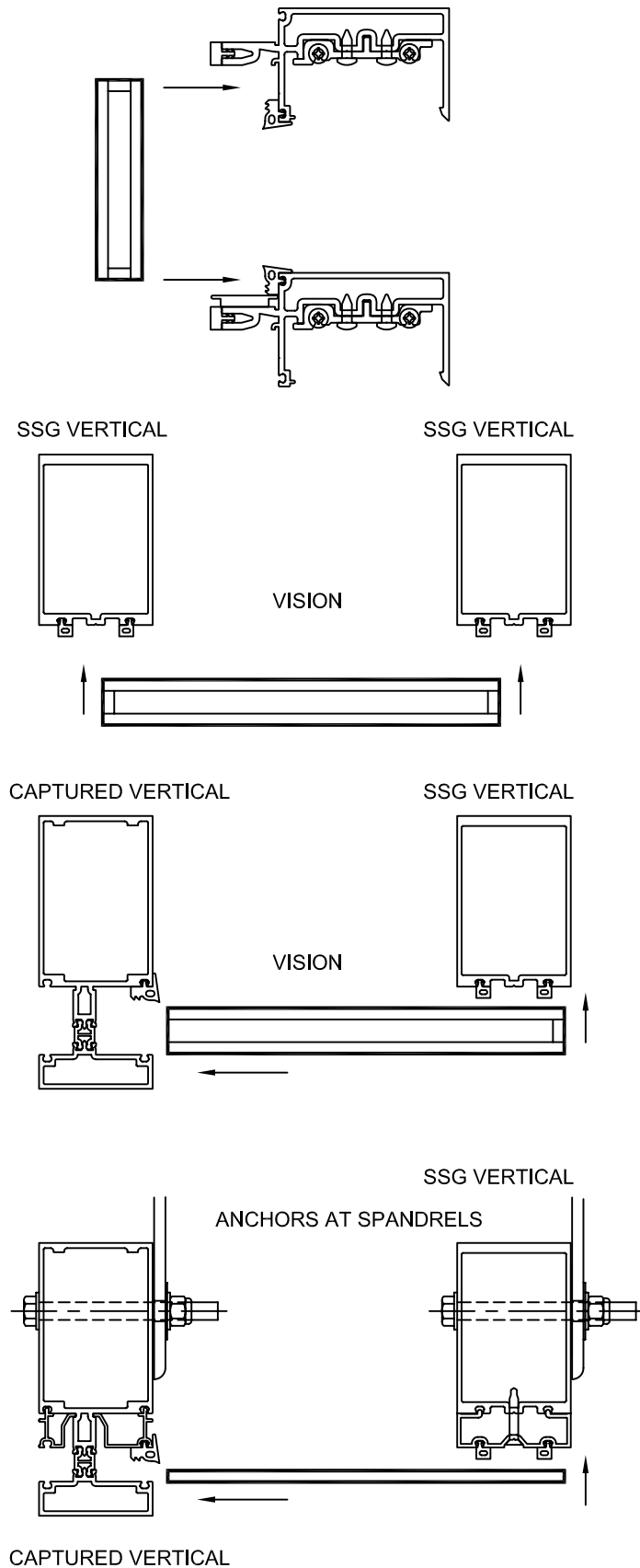


REFER TO APPROVED SHOP DRAWINGS.



INSTALL GLASS

INSTALL GLASS LIFTING ABOVE SILL AND INSTALLING AT VERTICALS AS SHOWN.



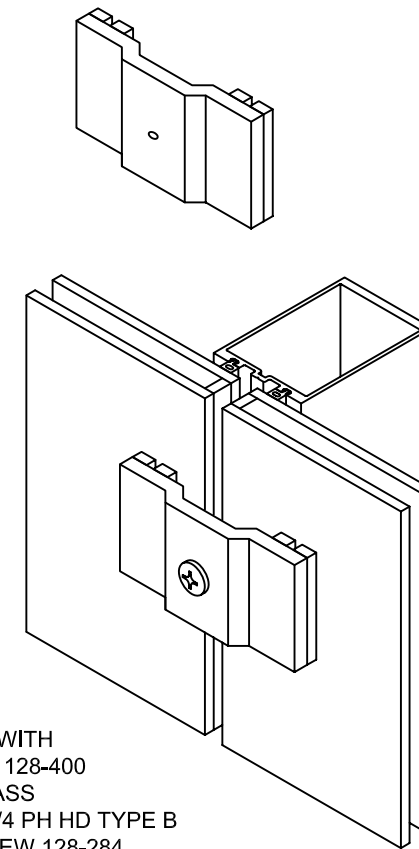
INSTALL GLASS

TEMPORARY RETAINERS FOR STRUCTURAL GLAZED VERTICALS.

THE LOCATION OF TEMPORARY EXTERIOR INFILL RETAINERS SHOULD BE AT A MAXIMUM SPACING OF 2'-6" ON CENTER.

IF HIGH WIND CONDITIONS ARE ANTICIPATED, ADDITIONAL RETAINERS MAY BE REQUIRED AND YOU SHOULD CONSULT YOUR SEALANT AND/OR INFILL SUPPLIER FOR SPACING RECOMMENDATIONS.

GLAZING TEMPORARY 162-353



INSTALL WITH SCREWS 128-400 AT 1" GLASS
#12 X 2-1/4 PH HD TYPE B
USE SCREW 128-284 AT 1/4" GLASS
#12 X 1-1/2 FL HD TYPE AB

AT CORNERS AND SPLAYS RETAINERS SHOULD BE MADE FROM A GOOD QUALITY HARDWOOD. THESE RETAINERS ARE NOT SUPPLIED BY KAWNEER.

KAWNEER EXTERIOR GLAZED

1600 SYSTEM³ WITH SSG
INSTALLATION INSTRUCTIONS

PART NO.
163-971 4 OF 5

95455-36
03/12/07

DRAWING:

ORDER:

SHT:

INSTALL PRESSURE PLATES

INSTALL HORIZONTAL PRESSURE PLATES

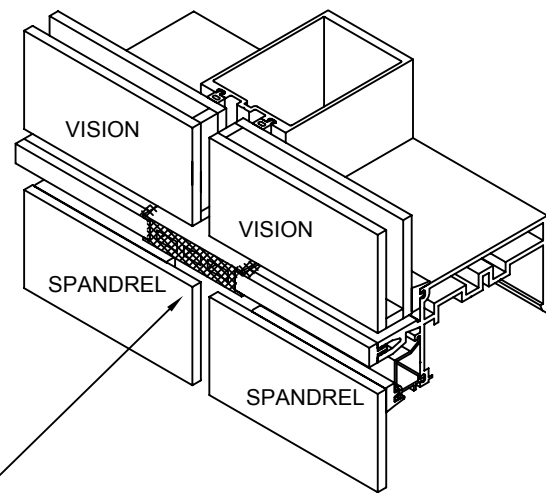
LOCATE WEEP HOLES ON THE TOP SIDE

INSTALL PRESSURE PLATES USING SCREWS
128-406 1/4-14 x 1" HEX WASHER HEAD
TYPE AB. INSTALL GASKETS SHOWN.

SCREWS ARE TO BE LOCATED 3" MAX FROM
EACH END AND 6" ON CENTER.

CENTER HORIZONTAL PRESSURE PLATE LEAVING
A 3/16" GAP AT CAPTURED VERTICAL. USE
SHIMS TO MAINTAIN THE 3/16" SPACE. IF NOT
INSTALL TWO SCREWS PART WAY THEN INSTALL
A THIRD SCREW ALL THE WAY. THIS ELIMINATES
LATERAL WALKING OF THE PRESSURE PLATE.

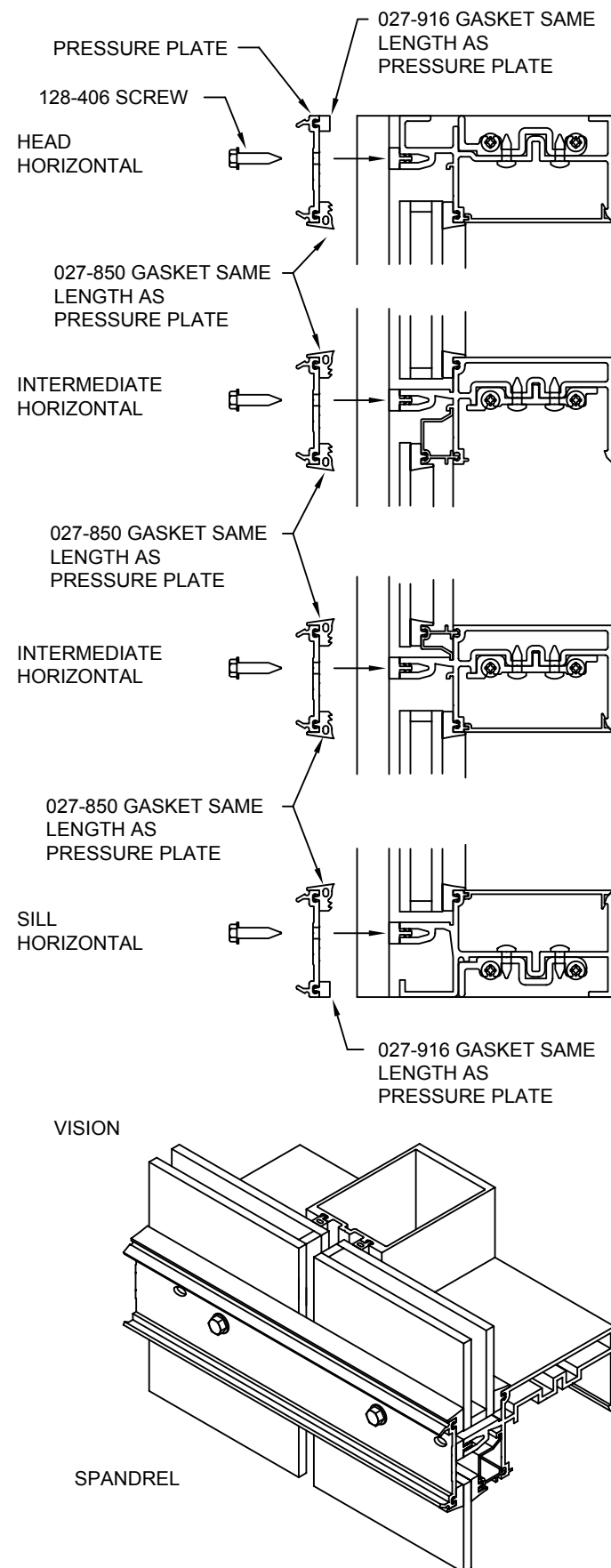
TORQUE ALL SCREWS TO 90 TO 100 INCH POUNDS.



JUST BEFORE APPLYING PRESSURE PLATE
APPLY A GENEROUS AMOUNT OF
SEALANT TO THE JOINT PLUG FACE.

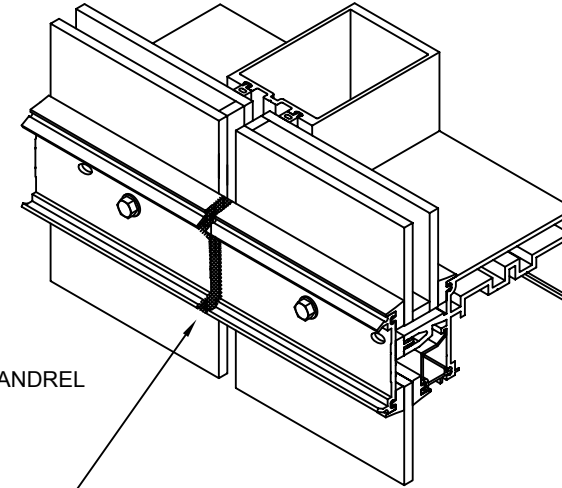
CLEAN JOINT PER SEALANT
MANUFACTURER'S RECOMMENDATIONS

INSTALL PRESSURE PLATES



INSTALL PRESSURE PLATES

VISION



SPANDREL

COMPLETELY SEAL HORIZONTAL
PRESSURE PLATE JOINT.
DO NOT LET SEALANT INTERFERE
WITH COVER SNAP

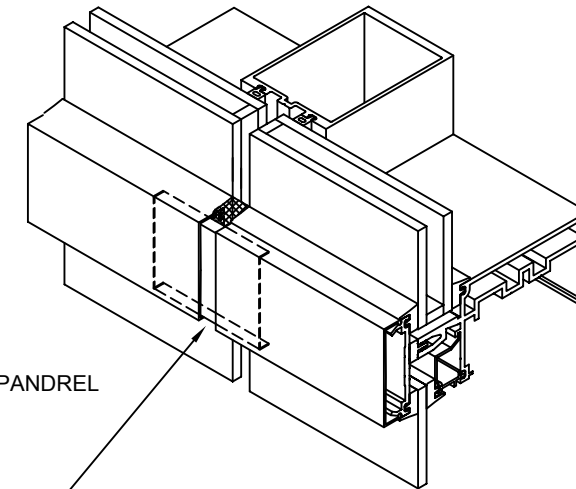
CLEAN JOINT PER SEALANT
MANUFACTURER'S RECOMMENDATIONS

INSTALL EXTERIOR COVERS

REFERENCE STEP #18 ON 163-970 SHEET 12

VISION

PRESSURE PLATE



SPANDREL

HORIZONTAL COVER JOINT
SPLICE SLEEVE IS FACTORY APPLIED
TO COVER AT ONE SIDE OF JOINT

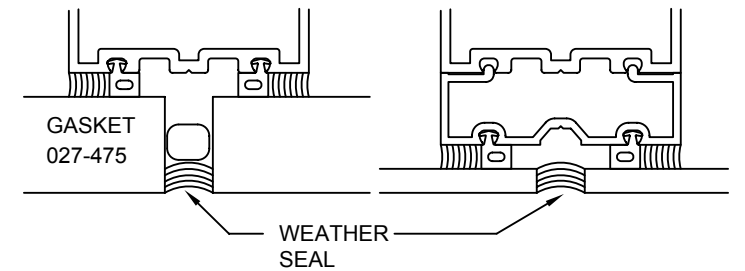
INSTALL STRUCTURAL AND WEATHER SEALS

KAWNEER DOES NOT SUPPLY SEALANT.
SEALANT TO BE SILICONE AS RECOMMENDED BY
THE SEALANT MANUFACTURER.
INFILL AND METAL TO BE CLEANED PER THE
SEALANT MANUFACTURER'S RECOMMENDATIONS.
SEALANT BACKUP ROD TO BE PER THE SEALANT
MANUFACTURER'S RECOMMENDATIONS.

FILL SPACE BETWEEN INSULATED UNITS AND
BEHIND SINGLE GLAZED UNITS WITH
RECOMMENDED BACKUP ROD.
APPLY STRUCTURAL SEAL AND WEATHER SEAL
AS SHOWN.
ALLOW STRUCTURAL SEAL TO CURE PER SEALANT
MANUFACTURER'S RECOMMENDATIONS.
THEN REMOVE TEMPORARY RETAINERS, SEAL SCREW
HOLES AND FILL WEATHER SEAL HOLES.

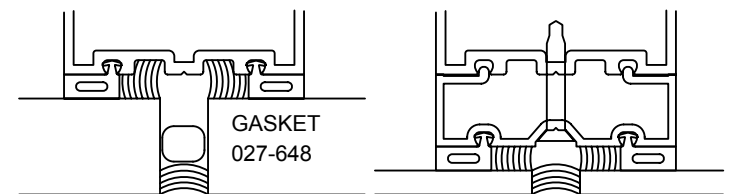
VISION AT INTERIOR
STRUCTURAL SEAL

SPANDREL AT INTERIOR
STRUCTURAL SEAL



VISION AT EXTERIOR
STRUCTURAL SEAL

SPANDREL AT EXTERIOR
STRUCTURAL SEAL



EXTERIOR STRUCTURAL SEAL MUST BE APPLIED
IN THREE STEPS.
EACH SIDE SEPARATELY THEN THE WEATHER SEAL

KAWNEER EXTERIOR
GLAZED
1600 SYSTEM³ WITH SSG
INSTALLATION INSTRUCTIONS

PART NO.
163-971 5 OF 5

95455-37
03/11/09

DRAWING:

ORDER:

SHT: