

GENERAL NOTES

THESE INSTALLATION INSTRUCTIONS ARE A SUPPLEMENT TO THE APPROVED SHOP DRAWINGS. USE IN CONJUNCTION WITH THOSE DRAWINGS.

1 - HANDLING, STORING AND PROTECTING ALUMINUM MATERIAL.

THE FOLLOWING PRECAUTIONS ARE RECOMMENDED TO ASSURE EARLY ACCEPTANCE OF YOUR PRODUCTS AND WORKMANSHIP.

A - HANDLE CAREFULLY - DO NOT DROP FROM THE TRUCK. STACK WITH ADEQUATE SEPARATION SO MATERIAL WILL NOT RUB TOGETHER. STORE OFF THE GROUND. PROTECT AGAINST ELEMENTS AND OTHER CONSTRUCTION TRADES.

B - KEEP MATERIAL AWAY FROM WATER, MUD AND SPRAY - PREVENT CEMENT, PLASTER AND OTHER MATERIALS FROM DAMAGING THE FINISH.

C - PROTECT THE MATERIALS AFTER ERECTION, BY WRAPPING WITH KRAFT PAPER - OR BY ERECTING VISQUEEN/CANVAS SPLATTER SCREENS. CEMENT, PLASTER, TERRAZZO AND OTHER ALKALINE MATERIALS ARE VERY HARMFUL TO THE FINISH AND SHOULD BE REMOVED WITH WATER AND MILD SOAP BEFORE SETTING OCCURS. UNDER NO CIRCUMSTANCES ALLOW THESE MATERIALS TO TO DRY OR PERMANENT STAINING WILL OCCUR.

2 - GENERAL RULES

THE FOLLOWING PRACTICES ARE RECOMMENDED FOR ALL WALL INSTALLATIONS.

A - READ COMPLETE INSTRUCTIONS BEFORE ORDERING GLASS OR FABRICATING MATERIAL.

B - CHECK SHOP DRAWINGS TO BECOME THOROUGHLY FAMILIAR WITH THE JOB.

C - ALL MATERIALS ARE TO BE INSTALLED PLUMB, LEVEL AND TRUE.

D - ALL WORK SHOULD START FROM ESTABLISHED BENCH MARKS AND COLUMN CENTER LINES ESTABLISHED BY THE ARCHITECTURAL DRAWINGS AND THE GENERAL CONTRACTOR.

E - THE SEQUENCE OF ERECTION SHOULD BE COORDINATED WITH THE JOB SUPERINTENDENT SO DELAYS ARE PREVENTED AND RISK OF MATERIAL DAMAGE IS MINIMIZED. IF PRESETTING OF ANCHORAGE IS REQUIRED, COORDINATE WITH GENERAL CONTRACTOR AND SUPERVISE LOCATION.

F - MAKE CERTAIN CONSTRUCTION WHICH WILL RECEIVE YOUR MATERIALS IS ACCORDING TO THE CONTRACT DOCUMENTS. IF NOT, NOTIFY THE GENERAL CONTRACTOR IN WRITING AND RESOLVE DIFFERENCES BEFORE PROCEEDING WITH YOUR WORK.

G - INSULATE ALL ALUMINUM TO BE PLACED DIRECTLY IN CONTACT WITH THE MASONRY OR INCOMPATIBLE MATERIALS WITH A HEAVY COAT OF ZINC CHROMATE OR BITUMINOUS PAINT.

H - FOLLOW KAWNEER INSTALLATION AND GLAZING INSTRUCTIONS.

J - CHECK ALL MATERIAL ON ARRIVAL FOR QUANTITY.

K - BE SURE TO HAVE ALL THE MATERIALS AND TOOLS NEEDED TO BEGIN THE INSTALLATION.

- 1 - APPROVED SHOP DRAWINGS
- 2 - LEVEL AND PLUMB (TRANSIT)
- 3 - FASTENERS AND REQUIRED DRIVERS.
- 4 - PERIMETERS AND ACCESSORIES SUCH AS ANCHORS, FASTENERS, SLEEVES AND/OR SPLICE CAPS.
- 5 - SEALING MATERIALS.
- 6 - GLAZING MATERIALS.

L - FOLLOW SEALANT MANUFACTURER'S RECOMMENDATIONS FOR PROPER SEALANT AND APPLICATION. ALL SEALANTS AND MASTICS MUST BE COMPATIBLE WITH ALL SURFACES INCLUDING OTHER SEALANT SURFACES. WHERE REQUIRED ALL SEALANTS MUST ADHERE TO ALL SURFACES INCLUDING OTHER SEALANT SURFACES.

1600 SYSTEM³ NOTES

1600 SYSTEM³ IS AVAILABLE WITH 1" FRAMING MEMBERS WHICH ACCEPT BOTH 1" AND 1/4" INFILLS.

1600 SYSTEM³ IS DESIGNED AS AN INTERIOR GLAZED SYSTEM. EXTERIOR GLAZING IS A OPTION. SEE EXTERIOR GLAZING STEPS.

NOTE POSITION OF SHALLOW AND DEEP POCKET IS IMPORTANT FOR GLAZING

GLASS BITE IS 1/2" AT VERTICALS AND HORIZONTALS. GASKET SYSTEM IS DESIGNED FOR UNBANDED INSULATING UNITS ONLY. GLASS SIZES MUST BE CALCULATED FROM APPROVED SHOP DRAWINGS. GASKET ASSEMBLIES ARE PREFERRED REFERENCE SHEET #9.

UNLESS OTHERWISE SPECIFIED, IT IS RECOMMENDED THAT SILICONE SEALANT BE USED FOR ALL INTERNAL SEALS.

SEALANT MUST BE APPLIED PER THE SEALANT MANUFACTURER'S RECOMMENDATIONS AND PASS ALL ADHESION AND COMPATIBILITY TESTING. AT ALL JOINT SEALS, SEALANT MUST ADHERE TO METAL, GASKETS, THERMAL SEPARATOR AND JOINT PLUG MATERIALS. CLEAN ALL SURFACES PRIOR TO APPLICATION OF SEALANT AND PRIME WHERE NECESSARY TO ACHIEVE PROPER ADHESION.

STEP - 1 CHECK OPENINGS

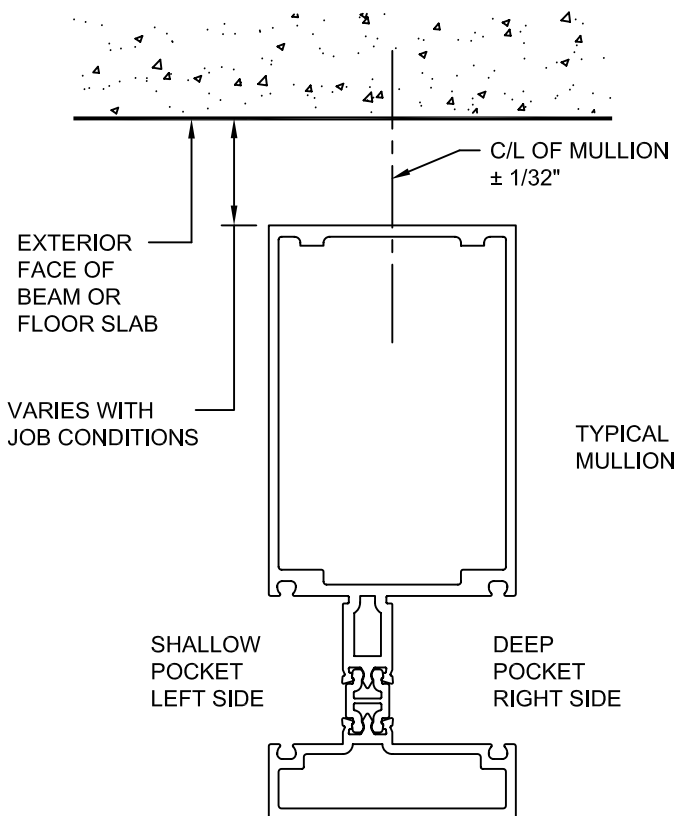
ELEVATIONS AND SLABS MUST BE WITHIN ADJUSTMENT OF ANCHORING SYSTEM. SEE APPROVED SHOP DRAWINGS FOR ALLOWABLE ADJUSTMENT.

ANCHORING SURFACES OF PERIMETER CONSTRUCTION MUST BE LEVEL AND PLUMB WITHIN THE ADJUSTMENT LIMITS OF THE HEAD, SILL AND JAMB. SEE APPROVED SHOP DRAWINGS FOR ALLOWABLE ADJUSTMENT.

STEP - 2 LAY OUT ANCHOR AND MULLION CENTERLINES

USE WALL LINES ESTABLISHED BY THE GENERAL CONTRACTOR. ON EACH FLOOR LAY OUT A REFERENCE LINE TO ESTABLISH IN AND OUT WALL LOCATIONS.

USE COLUMN CENTER LINES ESTABLISHED BY THE GENERAL CONTRACTOR. ON EACH FLOOR LAY OUT MULLION CENTER LINES AND ANCHOR CENTER LINES.



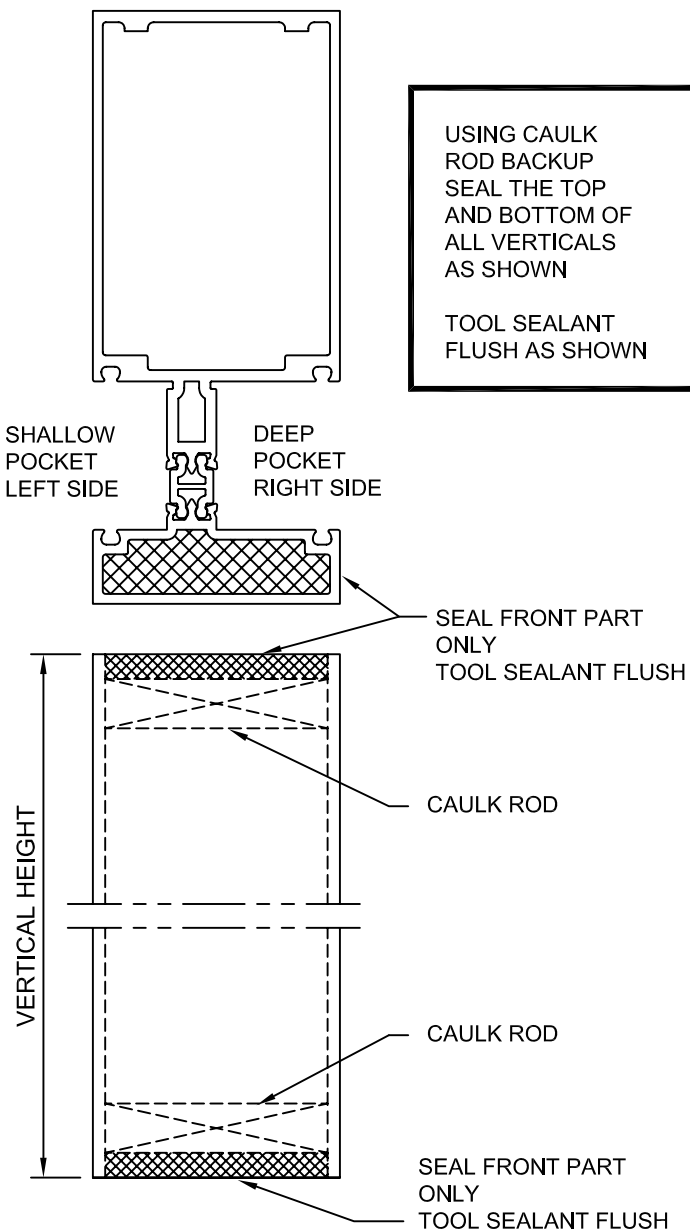
NOTE POSITION OF SHALLOW AND DEEP POCKET IS IMPORTANT FOR GLAZING

SEE APPROVED SHOP DRAWINGS FOR ANCHOR LAYOUTS

STEP - 3 INSTALL PRE-SET ANCHORS IF APPLICABLE

USING LOCATION LINES PREVIOUSLY ESTABLISHED INSTALL PRE-SET ANCHORS IN PLACE PER APPROVED SHOP DRAWINGS.

STEP - 4 FRAME ASSEMBLY



1600 SYSTEM³
INSTALLATION INSTRUCTIONS

PART NUMBER
163-970 1 OF 15

95455-36
03/12/07

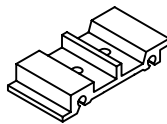
DRAWING:

ORDER:

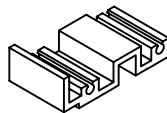
SHT:

STEP - 4 FRAME ASSEMBLY

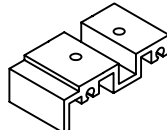
ATTACH SHEAR BLOCKS.



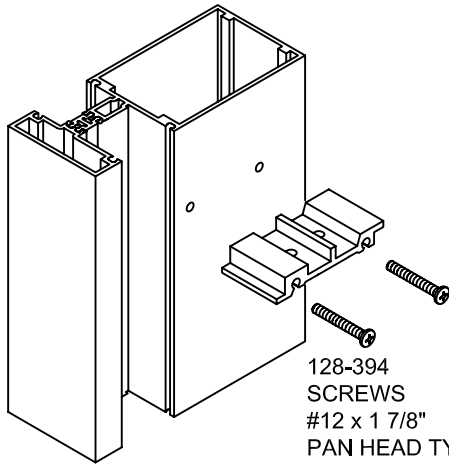
TYPICAL SHEAR BLOCKS
163-310 6" SYSTEM
163-311 7 1/2" SYSTEM
FOR INTERMEDIATE
HORIZONTALS.



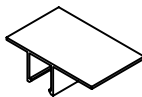
HEAD POSITION



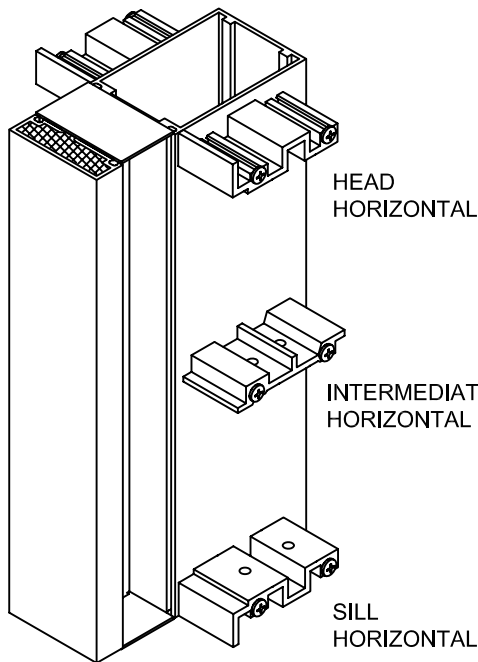
SILL POSITION



128-394
SCREWS
#12 x 1 7/8"
PAN HEAD TYPE B



SHOP
INSTALLED
HEAD AND SILL
CAPS 163-315
FOR
CONTINUATION
OF PERIMETER
SEAL



HEAD
HORIZONTAL

INTERMEDIATE
HORIZONTAL

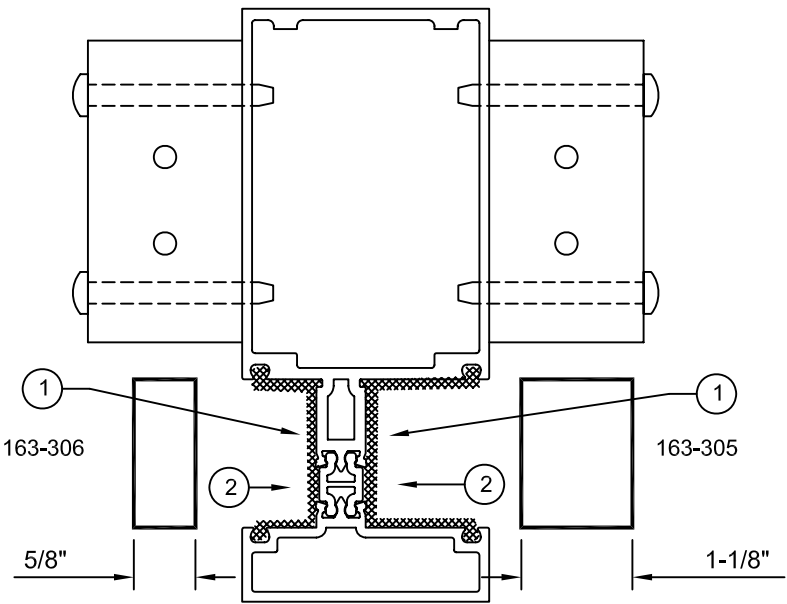
SILL
HORIZONTAL

STEP - 4 FRAME ASSEMBLY

INSTALL JOINT PLUGS.

NOTE JOINT PLUG LOCATIONS

- 1 APPLY SEALANT AT JOINT PLUG LOCATIONS
FILLING GASKET POCKETS AND GROOVES
- 2 INSTALL JOINT PLUGS INTO SEALANT
- 3 TOOL EXCESS SEALANT THE JOINT WILL BE
COMPLETELY SEALED DURING A LATER STEP



1

163-306

2

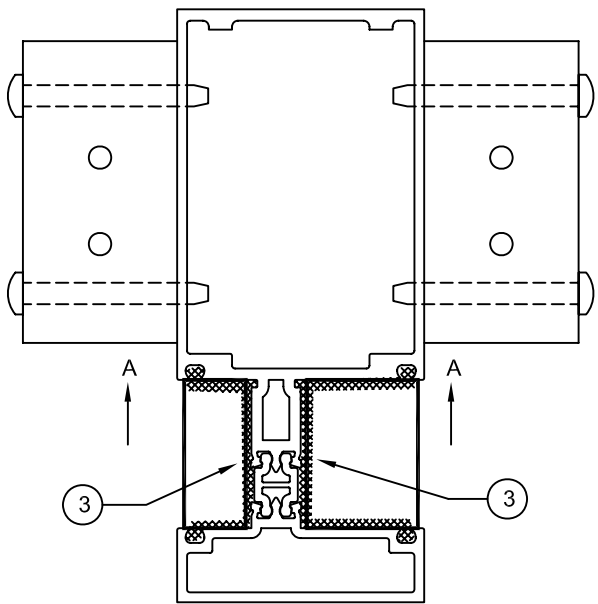
2

1

163-305

5/8"

1-1/8"



3

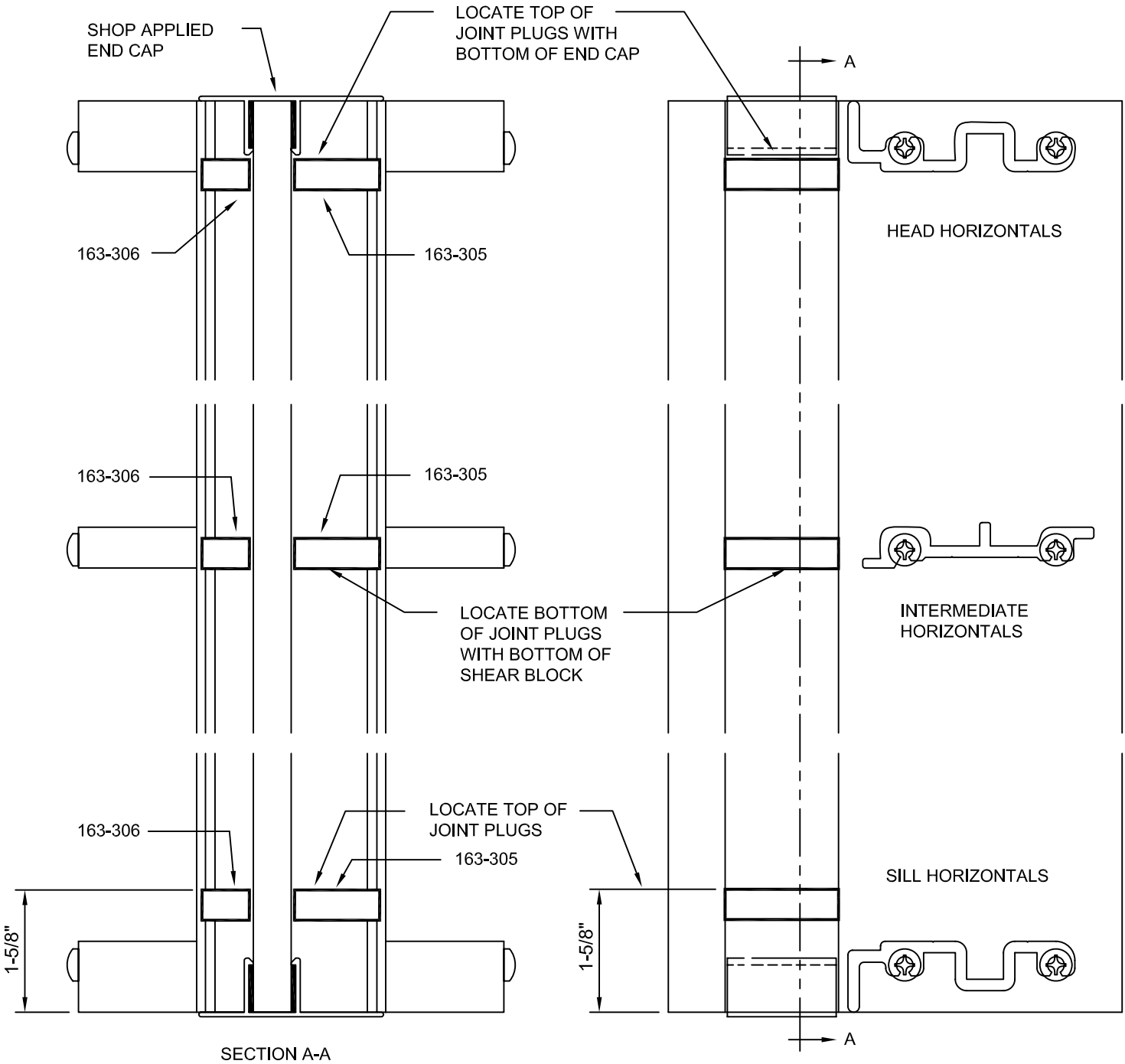
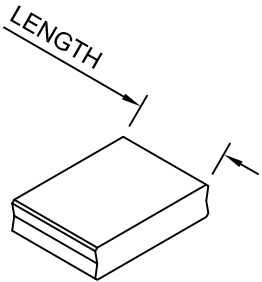
3

A

A

JOINT PLUG 163-305
LENGTH 1 1/8" FOR
DEEP POCKET

JOINT PLUG 163-306
LENGTH 5/8" FOR
SHALLOW POCKET



SHOP APPLIED
END CAP

LOCATE TOP OF
JOINT PLUGS WITH
BOTTOM OF END CAP

163-306

163-305

163-306

163-305

LOCATE BOTTOM
OF JOINT PLUGS
WITH BOTTOM OF
SHEAR BLOCK

163-306

LOCATE TOP OF
JOINT PLUGS

163-305

1-5/8"

1-5/8"

SECTION A-A

HEAD HORIZONTALS

INTERMEDIATE
HORIZONTALS

SILL HORIZONTALS



1600 SYSTEM³
INSTALLATION INSTRUCTIONS

PART NUMBER
163-970 2 OF 15

95455-36
03/12/07

DRAWING:

ORDER:

SHT:

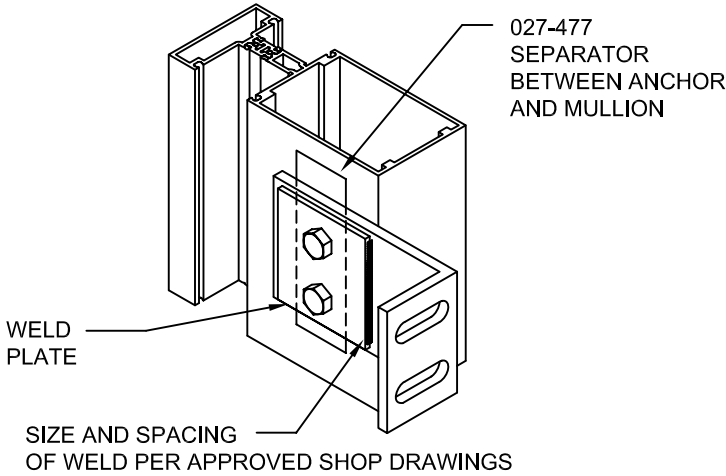
STEP - 4 FRAME ASSEMBLY

ATTACH ANCHORS TO MULLIONS WHERE APPLICABLE.

ANCHOR PREP MAY BE FABRICATED IN THE FIELD OR FACTORY. CONSULT APPROVED SHOP DRAWINGS FOR CORRECT METHOD.

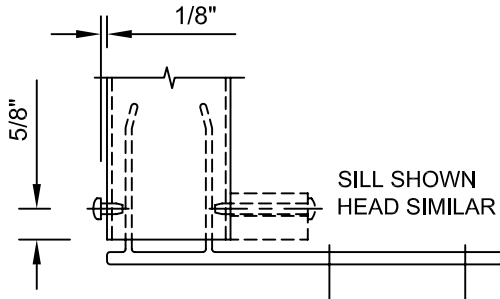
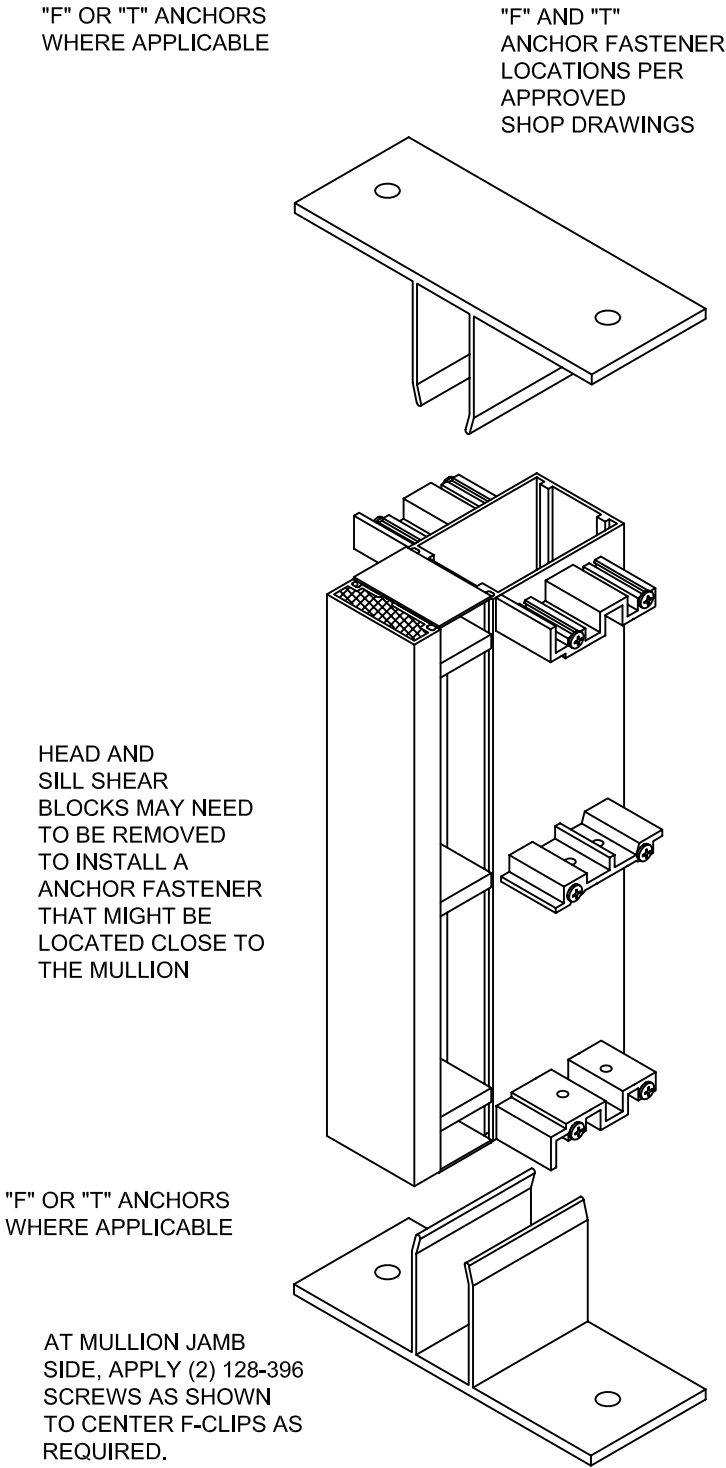
STANDARD ANCHOR PREP IS THRU-BOLTED AT INTERMEDIATE VERTICALS AND TAPPING PLATES ARE USED AT JAMB VERTICALS. REFER TO APPROVED SHOP DRAWINGS FOR CORRECT METHOD.

WHEN WELDING ANCHORS, PROTECT INSTALLED GLASS AND METAL FROM WELD SPLATTER.

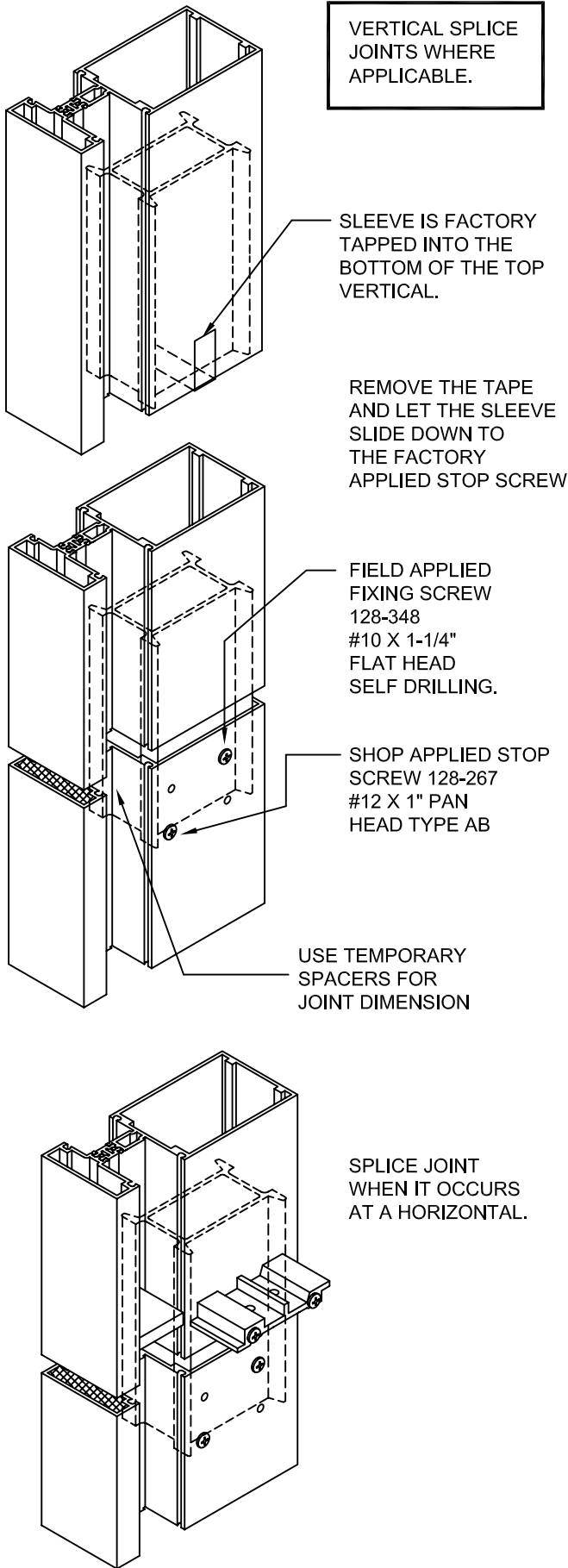


DO NOT OVERTIGHTEN ANCHOR CONNECTIONS. TIGHTEN TO A "SNUG TIGHT" POSITION WITH PARTS BROUGHT INTO GOOD CONTACT. BE SURE ANY SPRING TYPE LOCK WASHERS ARE COMPRESSED. THEN TIGHTEN APPROXIMATELY 1/2 MORE TURN.

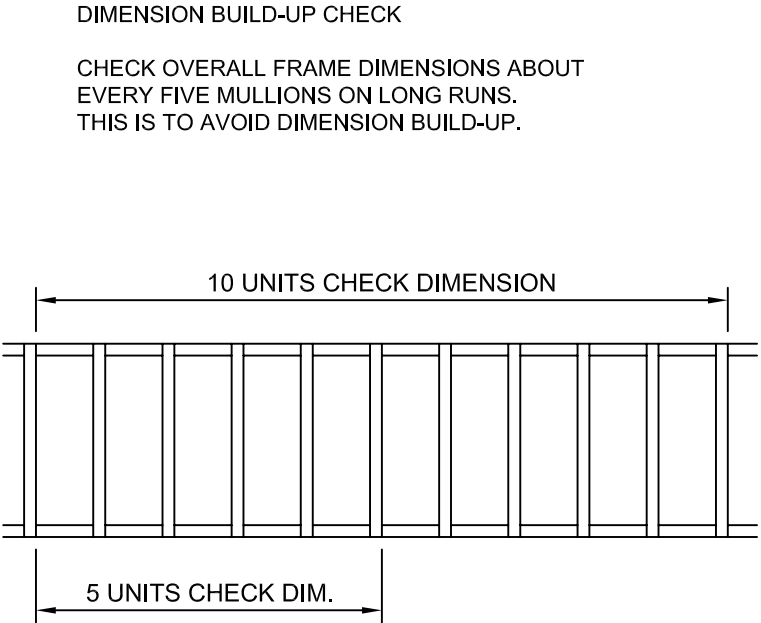
STEP - 5 INSTALL VERTICAL MULLIONS



STEP - 5 INSTALL VERTICAL MULLIONS



STEP - 5 INSTALL VERTICAL MULLIONS



1600 SYSTEM³
INSTALLATION INSTRUCTIONS

PART NUMBER
163-970 3 OF 15

95455-36
03/12/07

DRAWING:

ORDER:

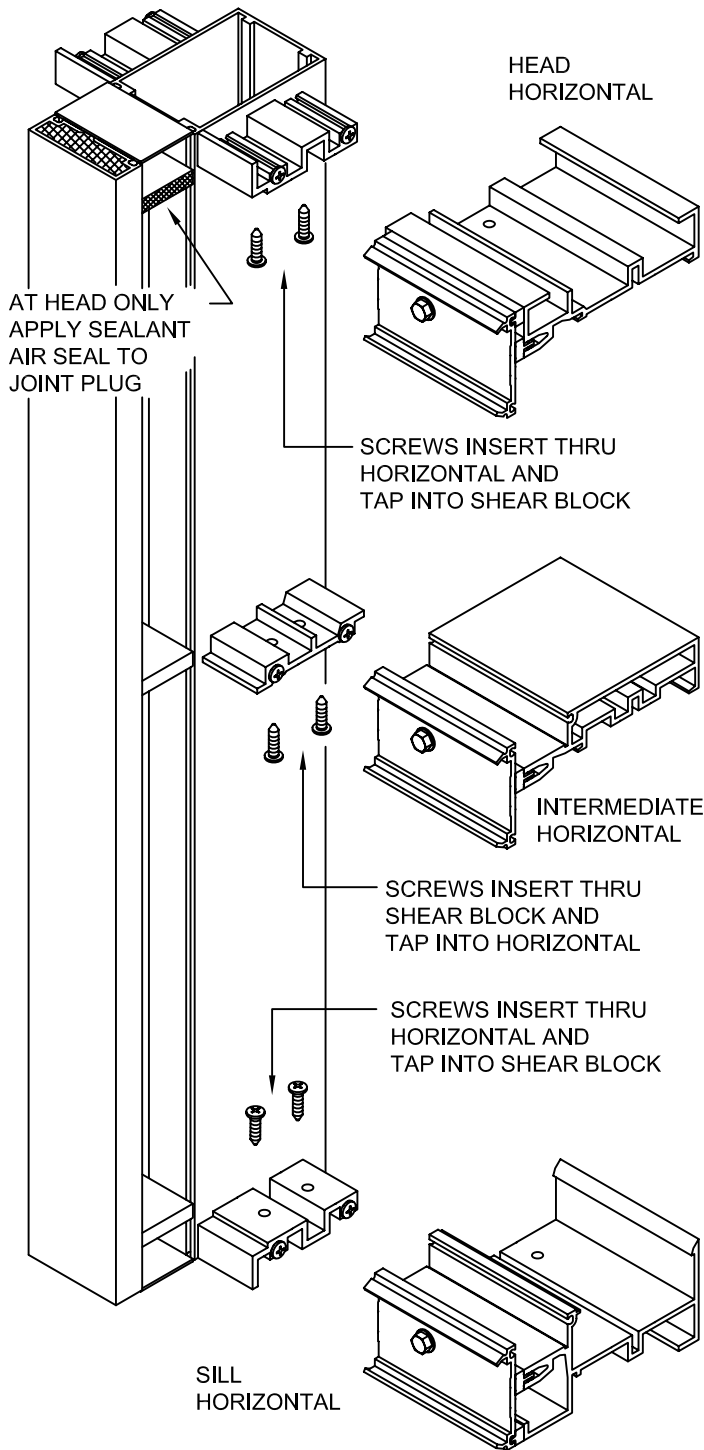
SHT:

STEP - 6 INSTALL HEAD/SILL
AND INTERMEDIATE
HORIZONTALS

INTERIOR GLAZED

PRESSURE PLATE AND THERMAL BREAK
TO BE FACTORY INSTALLED

INSTALL HORIZONTALS WITH 128-293
SCREWS AS SHOWN
#12 X 5/8 PAN HEAD TYPE AB

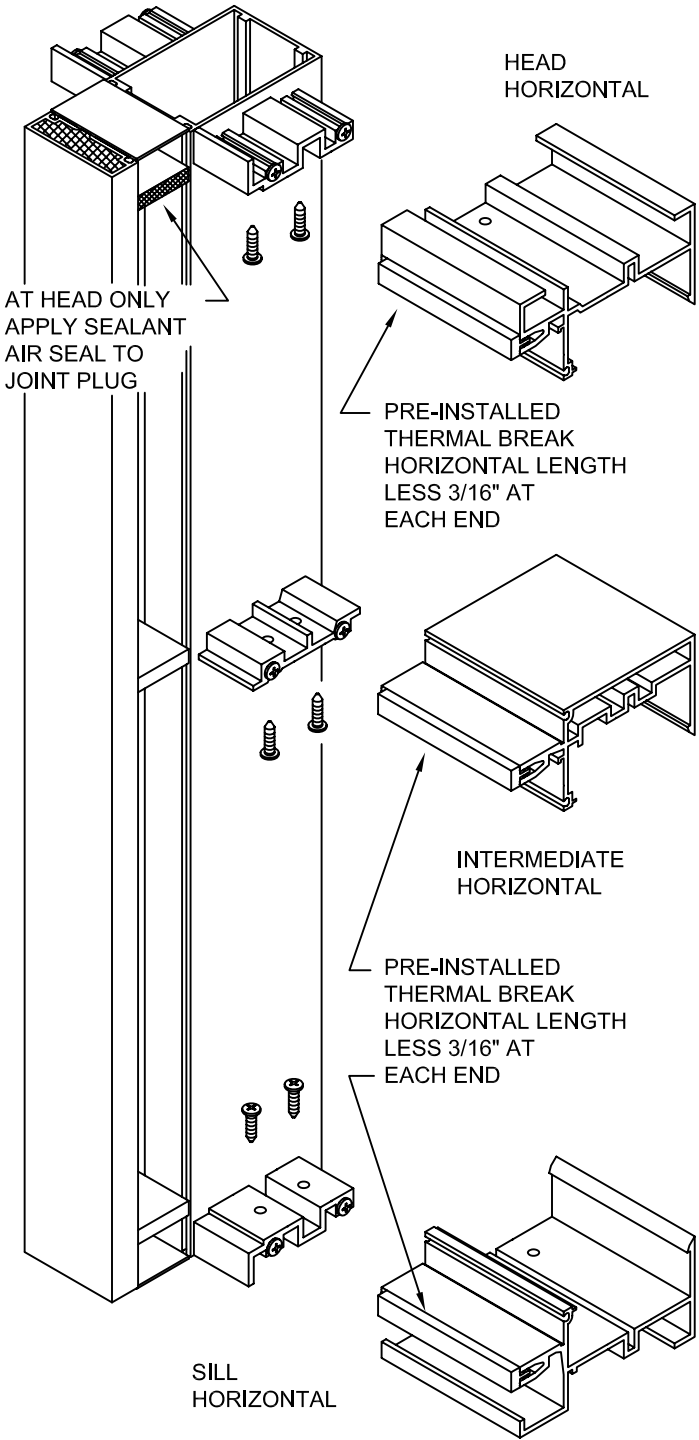


STEP - 7 INSTALL HEAD/SILL
AND INTERMEDIATE
HORIZONTALS

EXTERIOR GLAZED



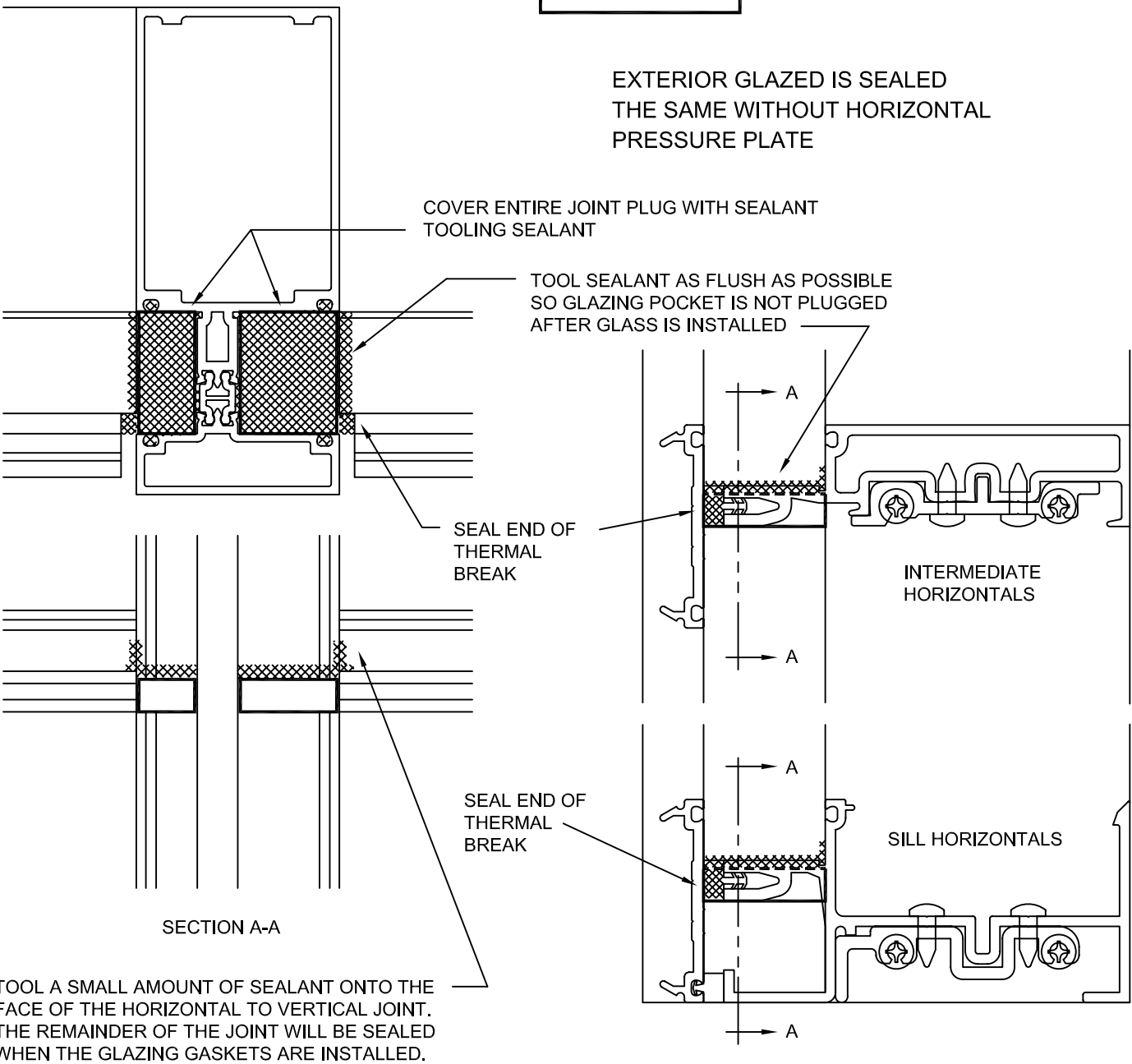
163-303 THERMAL BREAK
FACTORY INSTALLED



STEP - 8 SEAL JOINT
PLUGS

INTERIOR GLAZED

EXTERIOR GLAZED IS SEALED
THE SAME WITHOUT HORIZONTAL
PRESSURE PLATE



1600 SYSTEM³
INSTALLATION INSTRUCTIONS

PART NUMBER
163-970 4 OF 15

95455-36
03/12/07

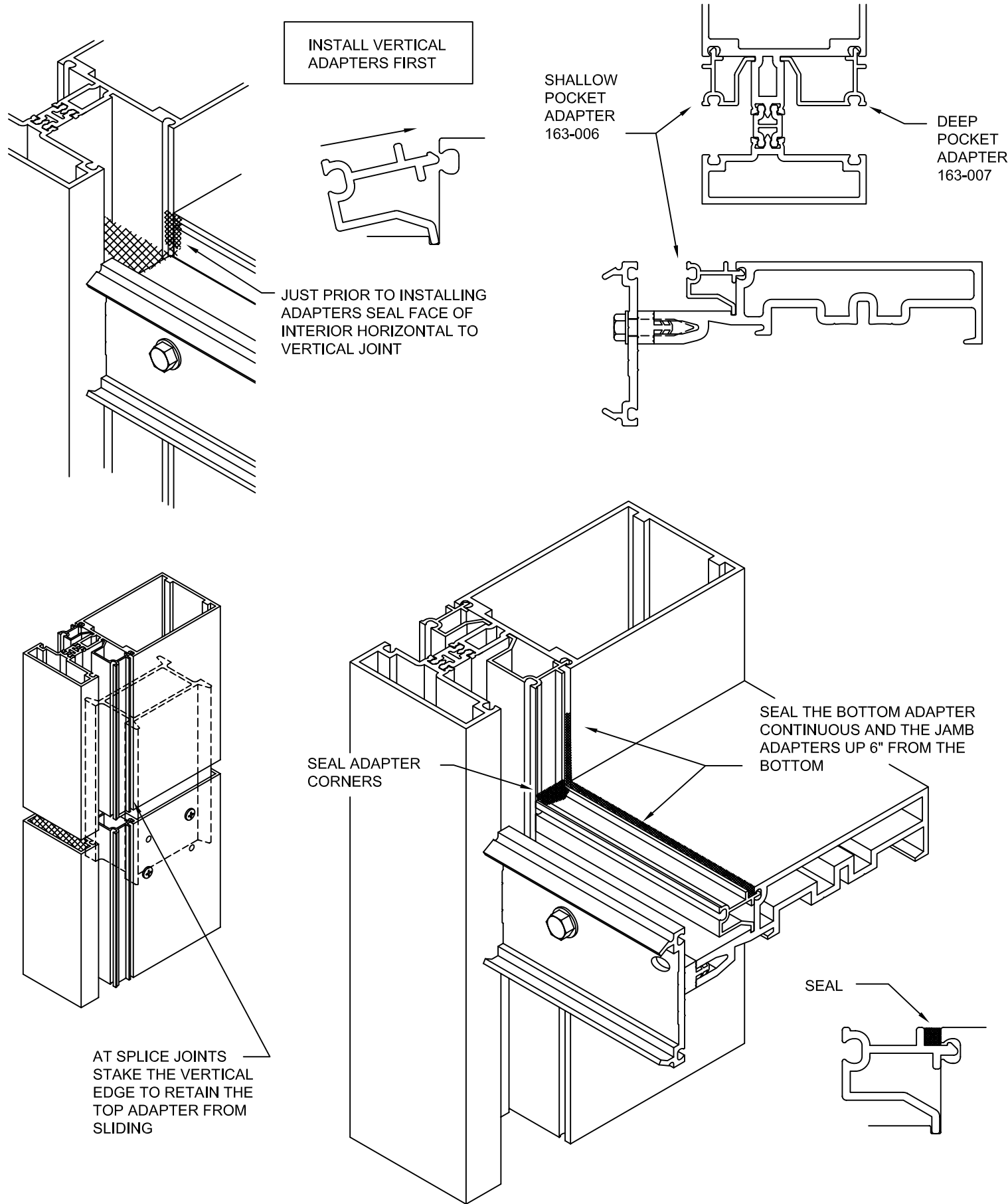
DRAWING:

ORDER:

SHT:

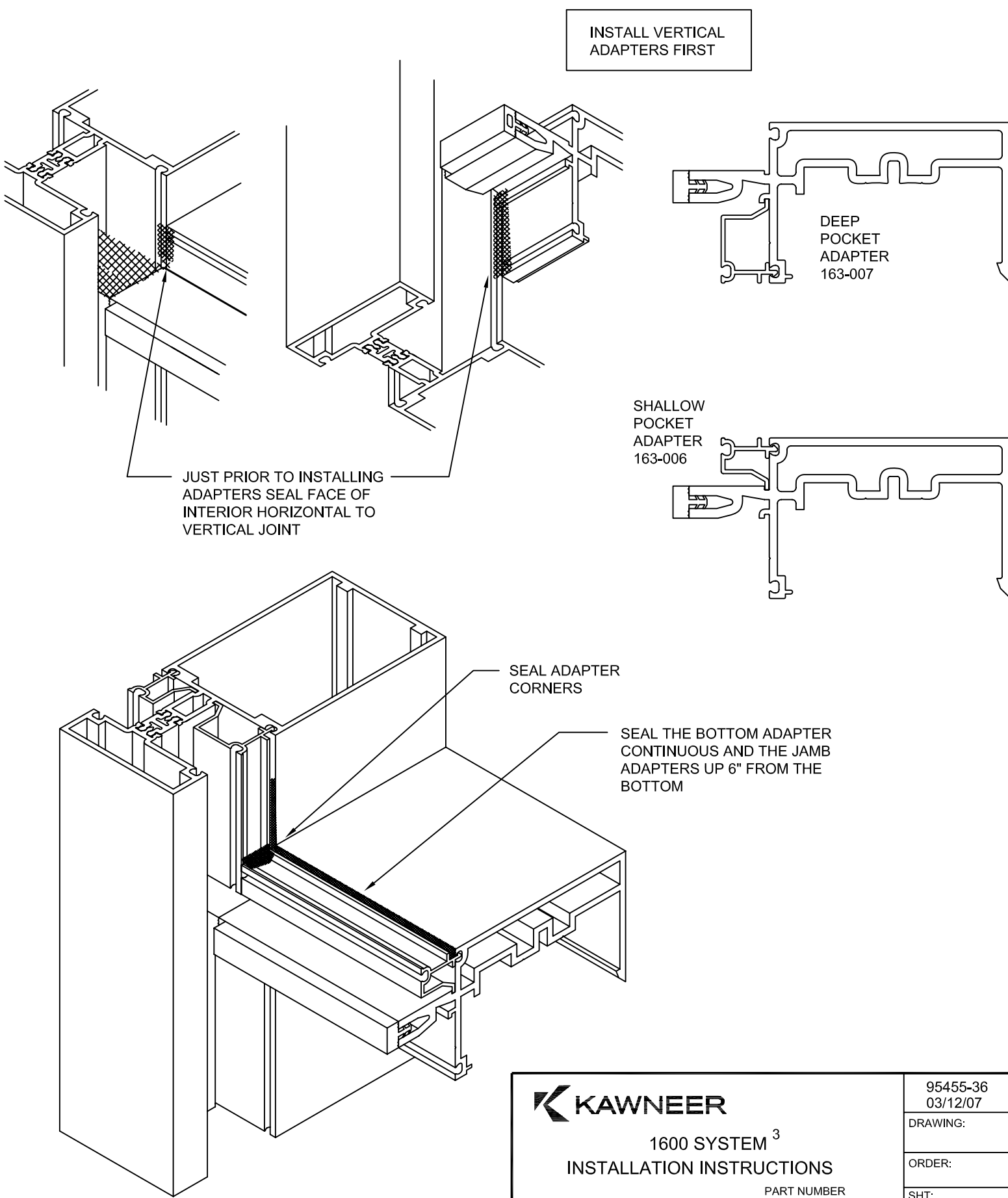
STEP - 9 INSTALL SPANDREL ADAPTERS

INTERIOR GLAZED



STEP -10 INSTALL SPANDREL ADAPTERS

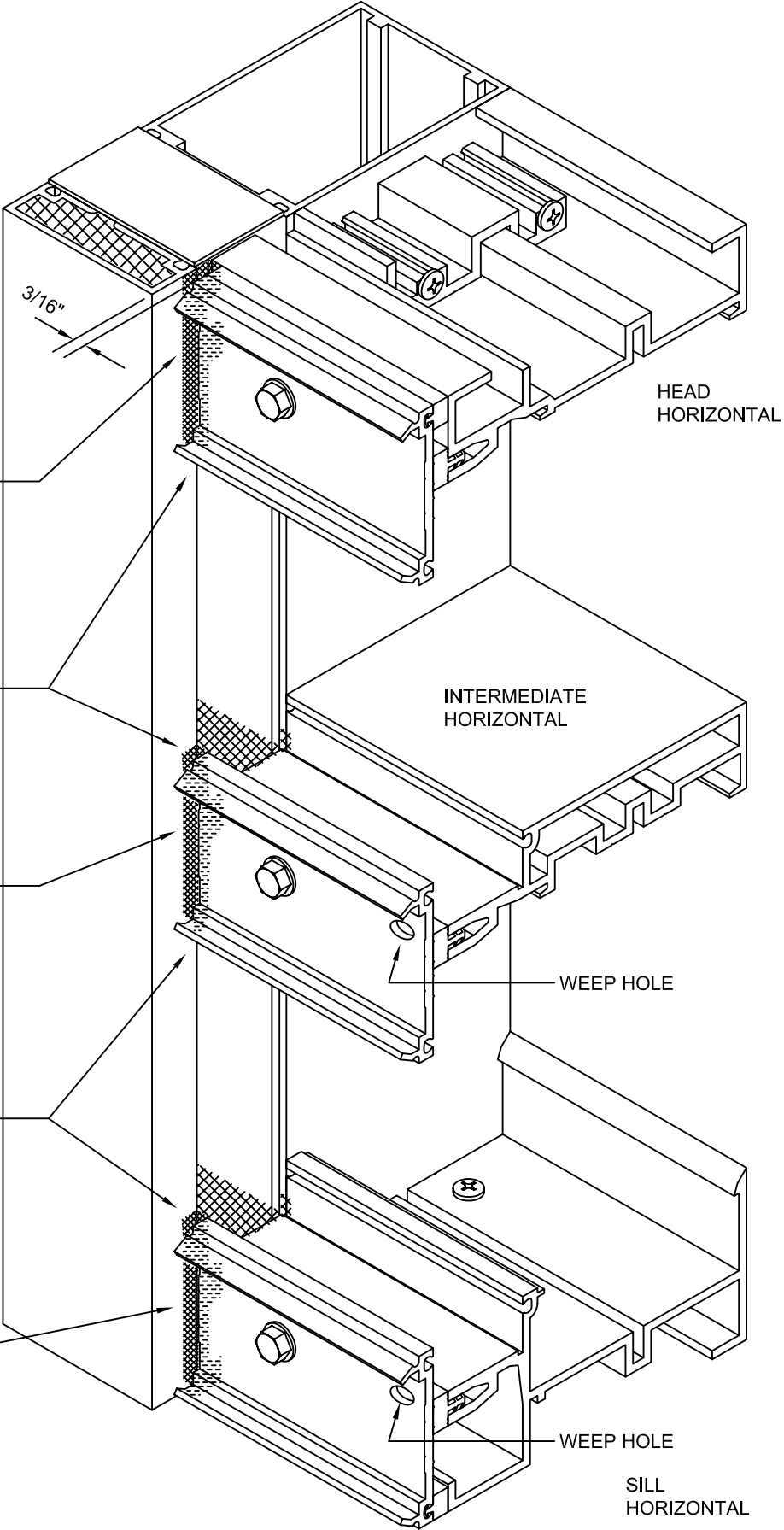
EXTERIOR GLAZED



STEP - 11 SEAL EXTERIOR HORIZONTAL
TO VERTICAL

INTERIOR GLAZED

PRESSURE PLATES ARE CUT
3/16" SHORT AT EACH END TO
CREATE A JOINT FOR SEALANT.

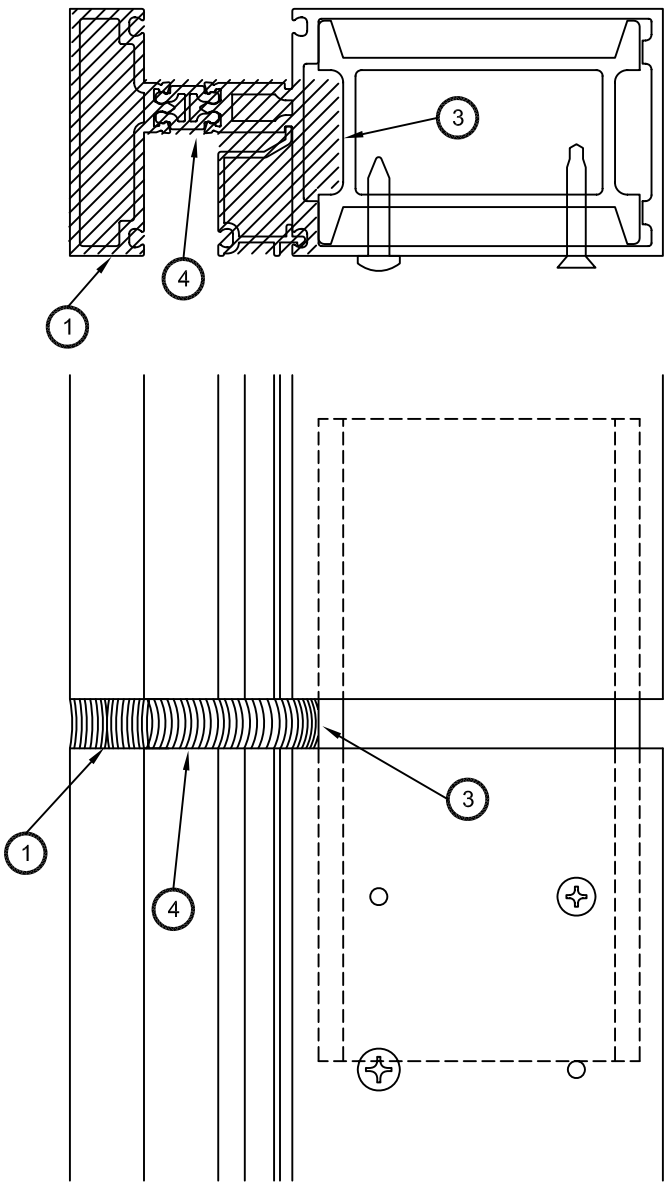
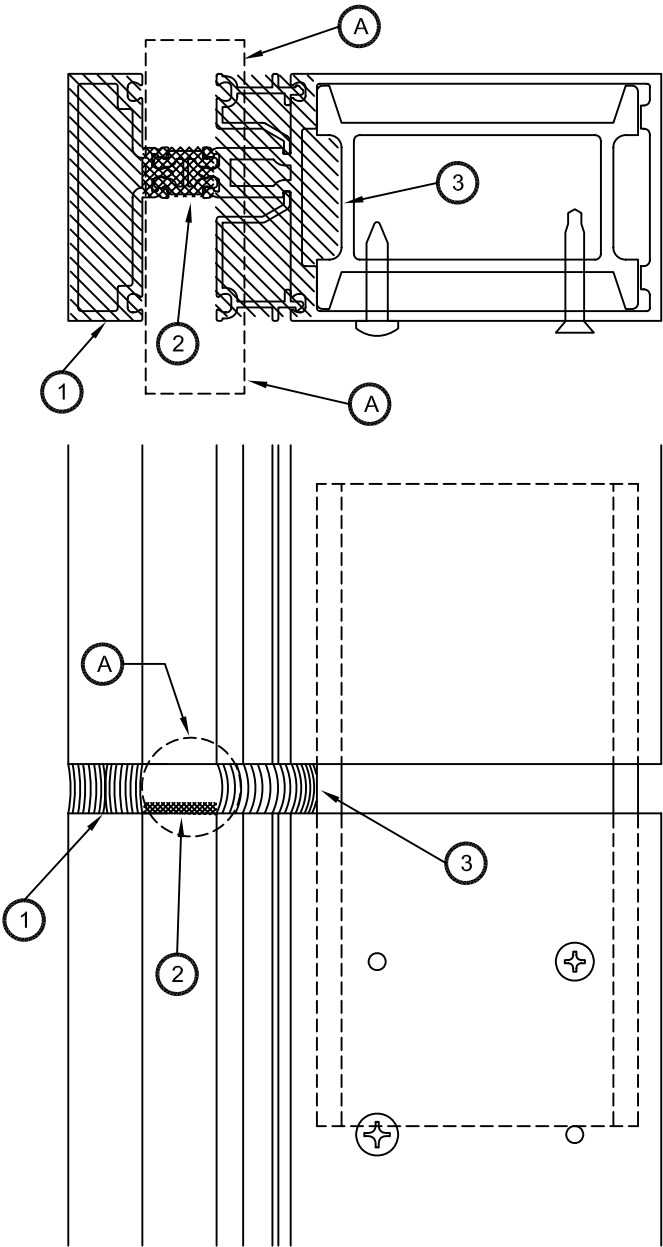


STEP - 12 SEAL VERTICAL
SPLICE JOINT

- 1 SEAL EXTERIOR PART OF SPLICE JOINT.
- 2 SEAL TOP OF LOWER VERTICAL AT GLAZING POCKET WEB.
- 3 SEAL INTERIOR JOINT AND ADAPTERS. APPLY BOND BREAKER TAPE TO VERTICAL SLEEVE
- 4 AT JAMB LOCATIONS SEAL ENTIRE JOINT AT GLAZING POCKET WEB.

CLEAN ALL JOINT SURFACES

A SUGGEST USING ABOUT A 1" DIA CAULK ROD AND WRAP IT WITH 4 MIL POLYETHYLENE PLASTIC SHEETING. INSERT AS SHOWN. USE MASKING TAPE ON METAL AND SEAL THE FRONT PART OF THE JOINT FIRST. LET THIS CURE FOR A FEW HOURS THEN REMOVE THE CAULK ROD AND PLASTIC. SOME OF THE SEALANT MAY COME OFF WITH THE ROD BUT THIS CAN BE TOUCHED UP WHEN THE REST OF THE JOINT IS SEALED. THE LONGER IT CURES THE CLEANER THE ROD WILL BE. USE MASKING TAPE WHEN SEALING REST OF JOINT.



1600 SYSTEM³
INSTALLATION INSTRUCTIONS

PART NUMBER
163-970 6 OF 15

95455-36
03/12/07

DRAWING:

ORDER:

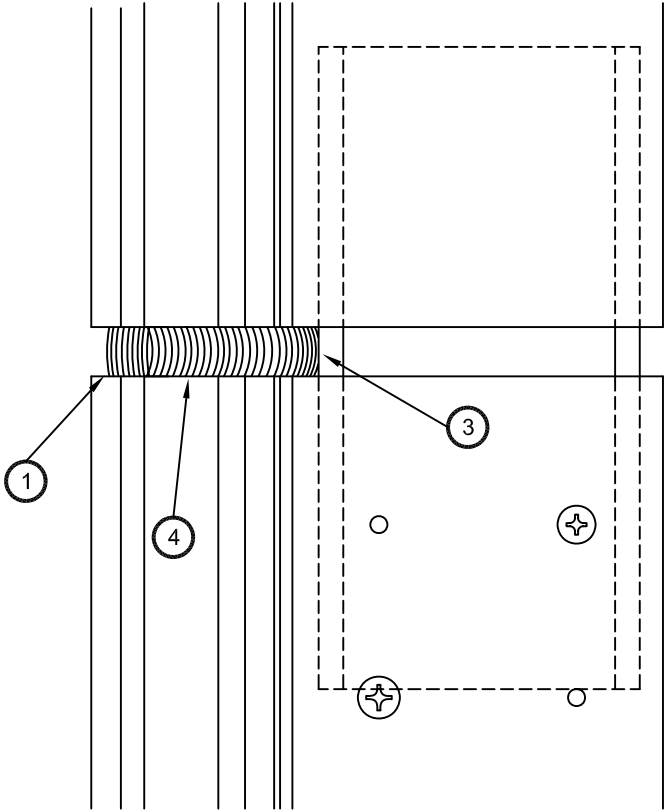
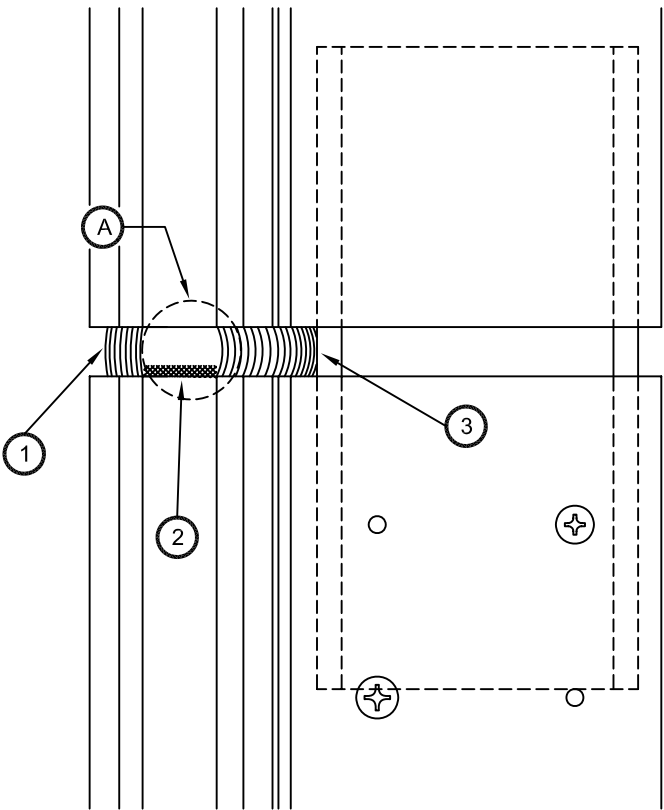
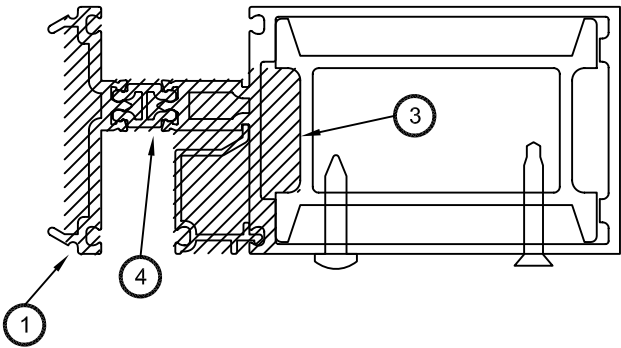
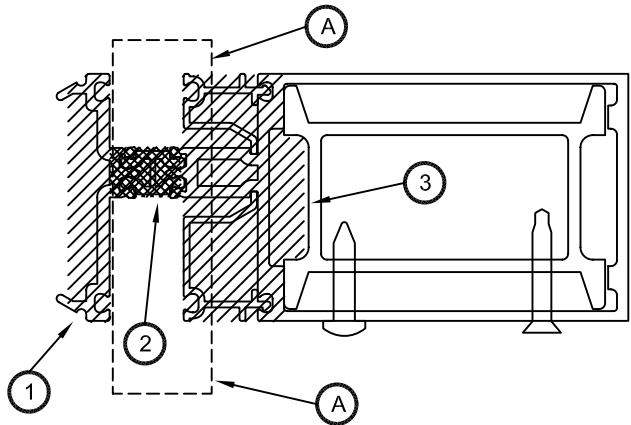
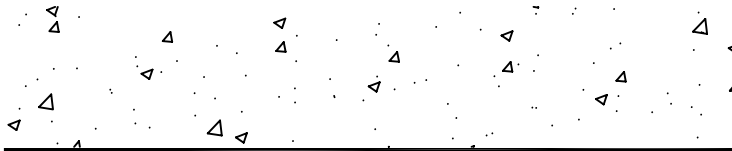
SHT:

STEP - 12A SEAL VERTICAL SPLICE JOINT
WHERE VERTICAL COVERS OCCUR

- 1 SEAL EXTERIOR PART OF SPLICE JOINT.
- 2 SEAL TOP OF LOWER VERTICAL AT GLAZING POCKET WEB.
- 3 SEAL INTERIOR JOINT AND ADAPTERS. APPLY BOND BREAKER TAPE TO VERTICAL SLEEVE
- 4 AT JAMB LOCATIONS SEAL ENTIRE JOINT AT GLAZING POCKET WEB.

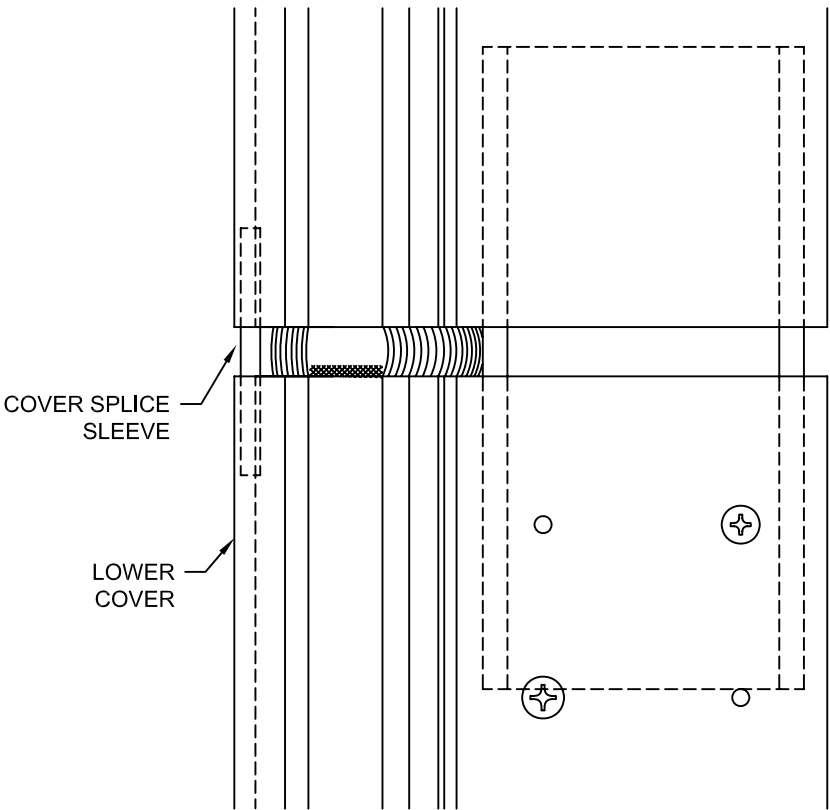
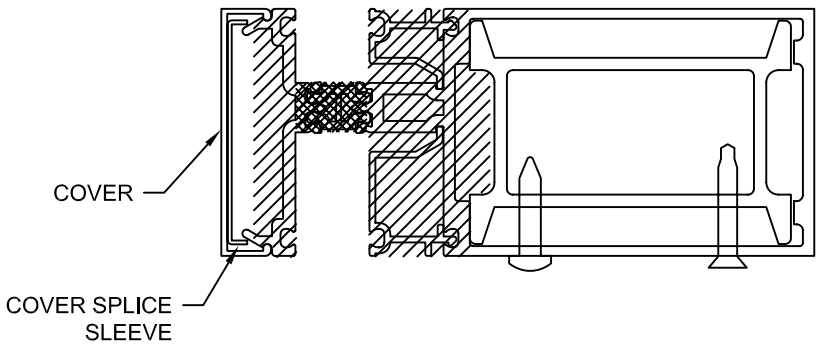
SEE NOTE A AT STEP #12

CLEAN ALL JOINT SURFACES



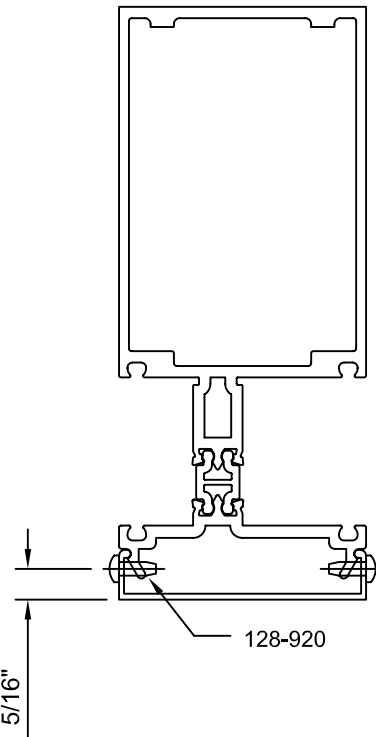
INSTALL VERTICAL COVERS

INSTALL LOWER COVER FIRST
LOWER COVER WILL HAVE A SHOP INSTALLED SPLICE SLEEVE



PINNING OF ALL VERTICAL COVERS IS REQUIRED FOR BOTH SIDES.
DRILL A .106 DIA. HOLE (#36 DRILL)
AND INSTALL 128-920 SCREWS
#6 X 3/8" PAN HEAD TYPE B
LOCATE PINNING AT A HORIZONTAL
CLOSEST TO THE COVER HEIGHT CENTER.

(ONE SIDE ONLY AT JAMBS)



1600 SYSTEM³
INSTALLATION INSTRUCTIONS

PART NUMBER
163-970 7 OF 15

95455-36
03/12/07

DRAWING:

ORDER:

SHT:

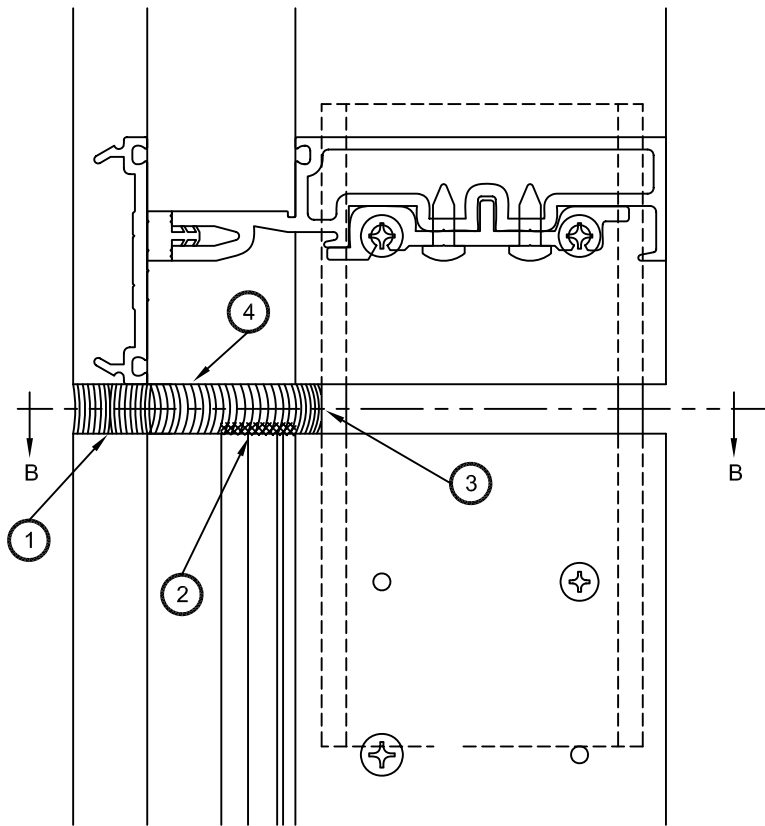
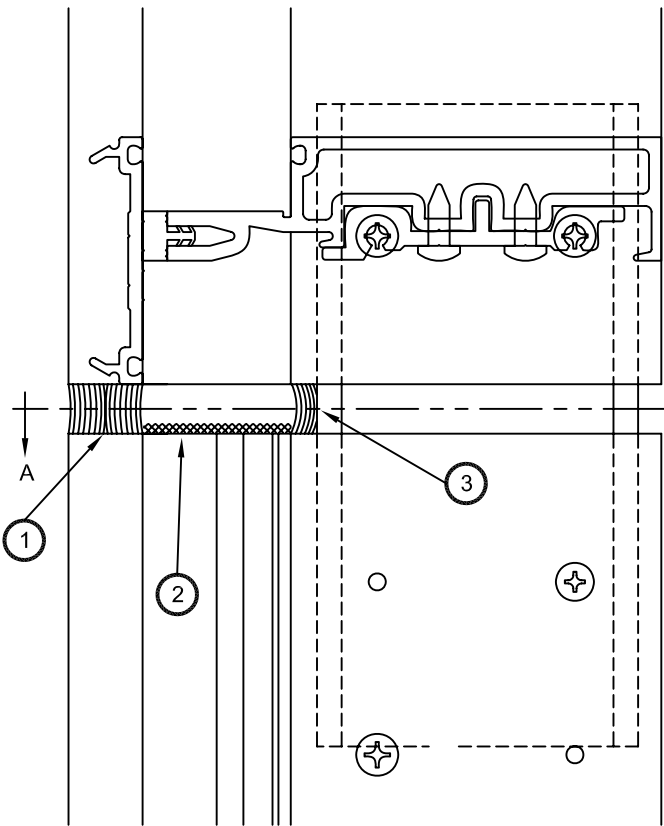
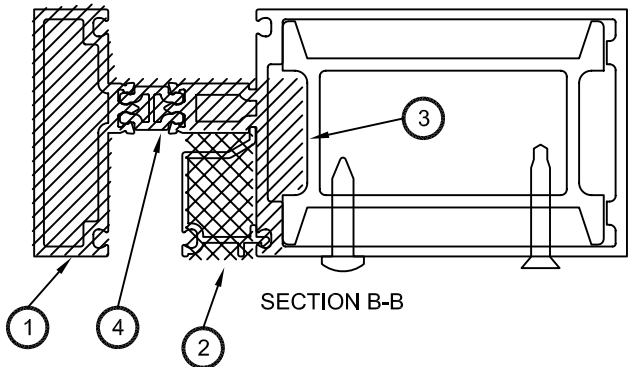
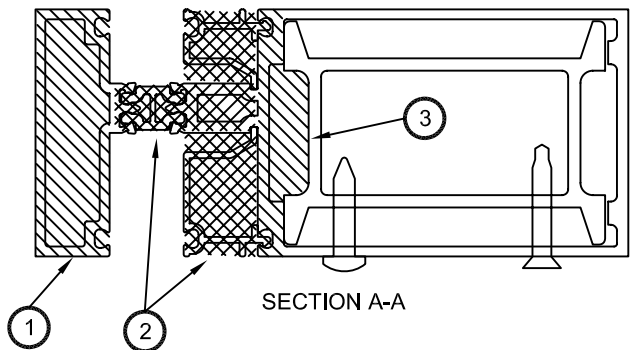
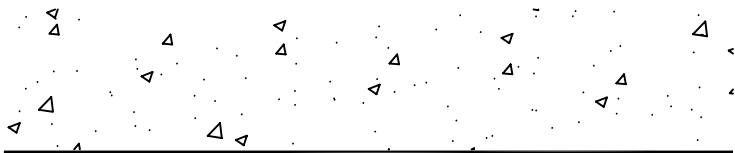
STEP - 13 SEAL VERTICAL SPLICE JOINT WHERE HORIZONTAL OCCURS

SEE NOTE (A) AT STEP #12

- 1 SEAL EXTERIOR PART OF SPLICE JOINT.
- 2 SEAL TOP OF LOWER VERTICAL AT GLAZING POCKET WEB.
- 3 SEAL INTERIOR JOINT AND ADAPTERS. APPLY BOND BREAKER TAPE TO VERTICAL SLEEVE
- 4 AT JAMB LOCATIONS SEAL ENTIRE JOINT AT GLAZING POCKET WEB.

INTERIOR GLAZED HORIZONTALS SHOWN
EXTERIOR GLAZED HORIZONTALS SIMILAR

CLEAN ALL JOINT SURFACES



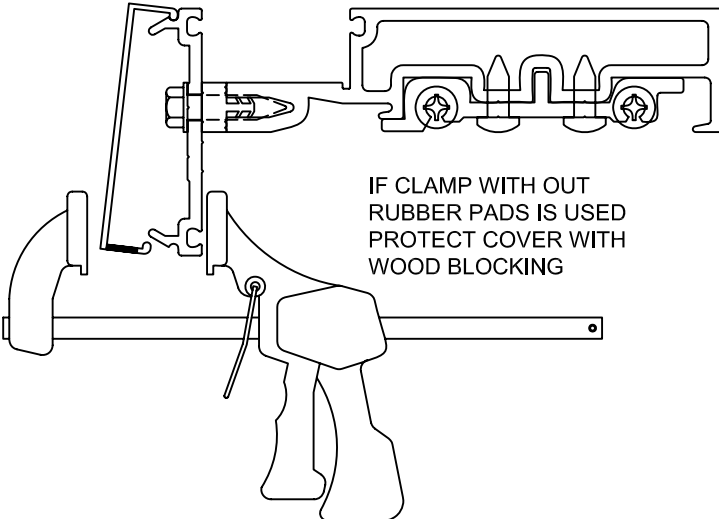
STEP - 14 INSTALL HORIZONTAL COVERS

INTERIOR GLAZED

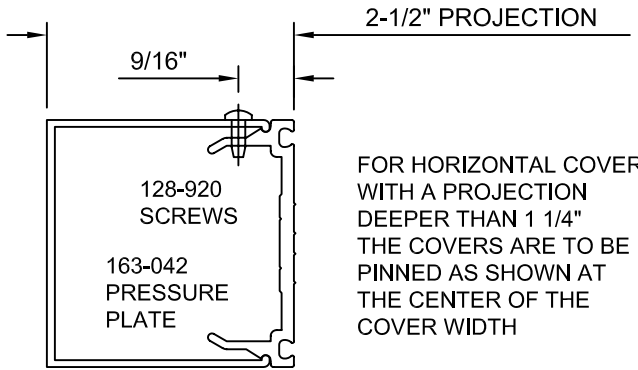
INSTALL COVERS WITH THE WEEP HOLES AT THE BOTTOM

CARE SHOULD BE TAKEN TO AVOID DAMAGE TO COVERS DURING INSTALLATION. COVERS SHOULD INSTALL WITH A LIGHT TAP IF NOT RECOMMEND USING A CLAMP WITH RUBBER PADS TO ENGAGE COVER

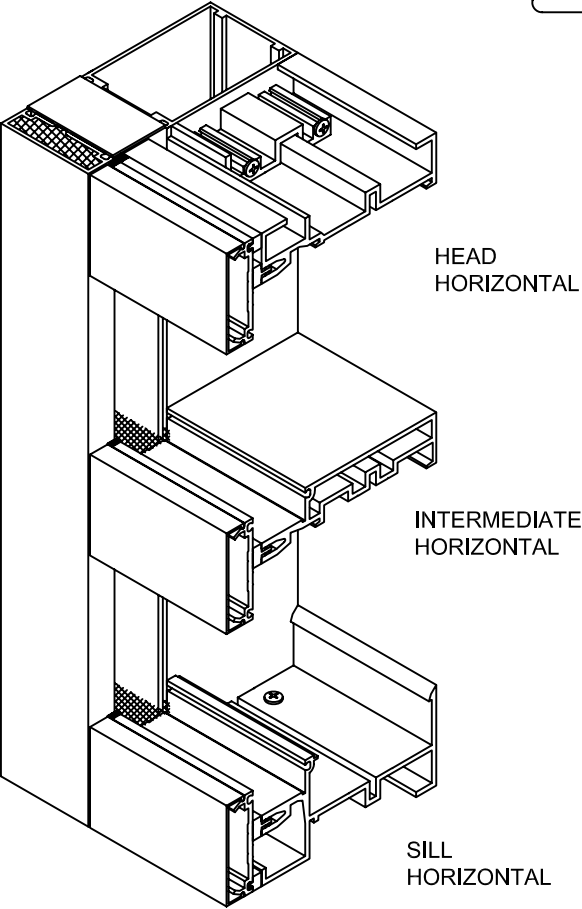
ENGAGE ONE SIDE OF COVER



IF CLAMP WITH OUT RUBBER PADS IS USED PROTECT COVER WITH WOOD BLOCKING

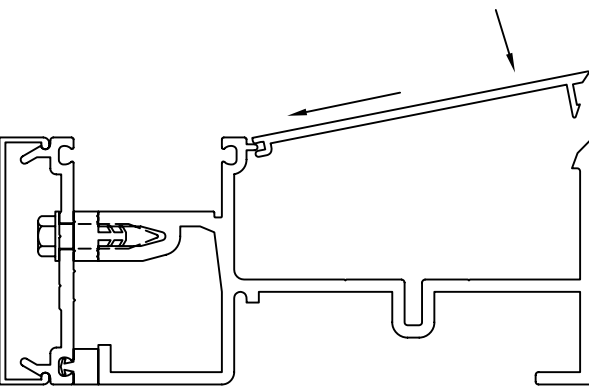


FOR HORIZONTAL COVERS WITH A PROJECTION DEEPER THAN 1 1/4" THE COVERS ARE TO BE PINNED AS SHOWN AT THE CENTER OF THE COVER WIDTH



STEP - 15 INSTALL INTERIOR FILLERS WHERE APPLICABLE

FILLERS USED AT EXPOSED AREAS ONLY



KAWNEER

1600 SYSTEM³
INSTALLATION INSTRUCTIONS

PART NUMBER
163-970 8 OF 15

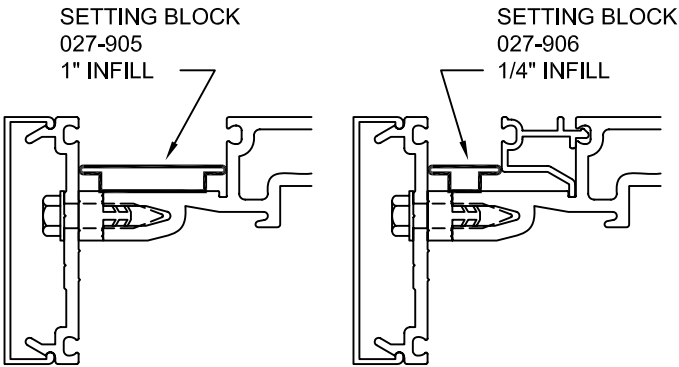
95455-36
03/12/07
DRAWING:
ORDER:
SHT:

STEP - 16 INTERIOR GLAZING

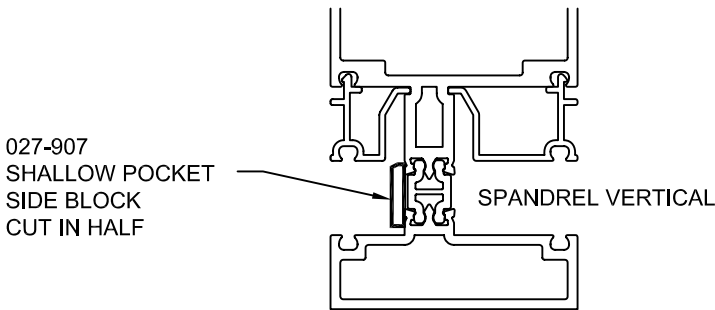
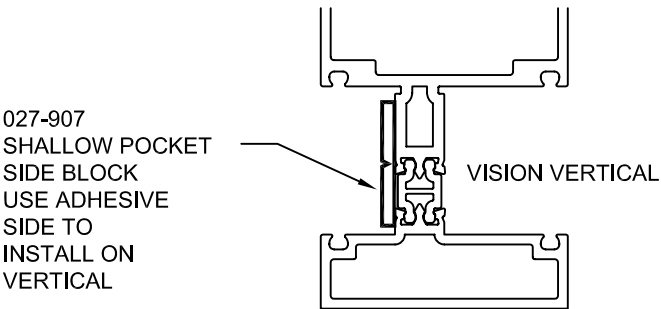
IT IS ESSENTIAL THAT ALL GUTTERS AT HORIZONTALS BE CLEANED PRIOR TO GLAZING.

THIS IS NECESSARY TO AVOID CLOGGING OF WEEP SYSTEMS AS WELL AS STAINING OF EXTERIOR METAL AND GLASS SURFACES.

INSTALL SETTING BLOCKS LOCATING PER APPROVED SHOP DRAWINGS.



INSTALL SIDE BLOCKS AT SHALLOW POCKET. LOCATE AT CENTER OF GLASS HEIGHT.



NOTE - GASKET ASSEMBLIES ARE PREFERRED IN ORDER TO MAINTAIN THE GASKET CORNERS WHEN INSTALLING THE GLASS. IF ASSEMBLIES ARE NOT USED SEAL GASKET CORNERS AND ALLOW SEALANT TO CURE SOME BEFORE INSTALLING THE GLASS.

STEP - 16 INTERIOR GLAZING

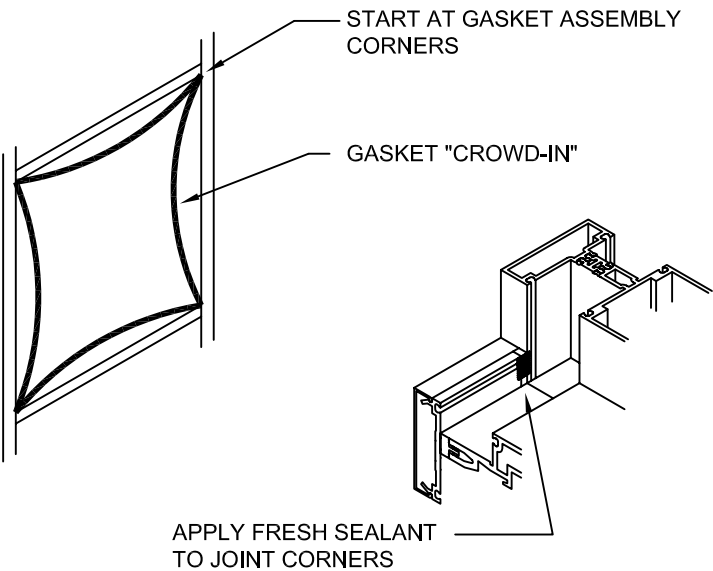
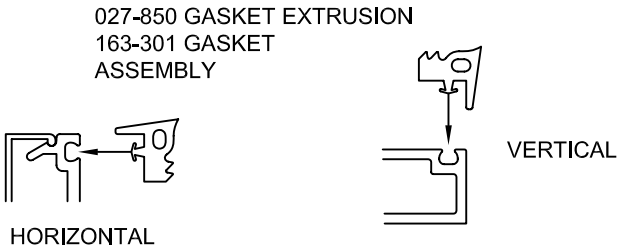
INSTALL EXTERIOR GASKET ASSEMBLIES.

GASKET ASSEMBLIES SHOULD BE INSTALLED JUST PRIOR TO GLASS FOR AVOIDING GASKET CONTAMINATION BY JOB SITE DEBRIS.

IN TEMPERATURES COLDER THAN 50 DEGREES F. ARRANGEMENTS SHOULD BE MADE TO KEEP THE GASKETS WARM UNTIL INSTALLATION OF GASKETS AND GLASS. THIS WILL PREVENT EXCESSIVE GLAZING PRESSURE ON THE GLASS EDGE DUE TO COLD, STIFF GASKETS.

GASKETS CAN BECOME DEFORMED DURING STORAGE IN CARTONS. REMOVE GASKETS FROM CARTONS SEVERAL HOURS PRIOR TO USE AND ALLOW TO LAY FLAT OR HANG OVER RACK. TEMPERATURES SHOULD BE AT LEAST 50 DEGREES F.

INSTALL GASKET ASSEMBLIES BY STARTING AT THE CORNERS AND WORKING TOWARDS THE CENTER, MAKING SURE THE CORNERS ARE SQUARE. GASKET ASSEMBLIES WILL BE SLIGHTLY LARGE TO ALLOW FOR SOME "CROWD-IN". DO NOT STRETCH, CUT OR SPLICE GASKETS.

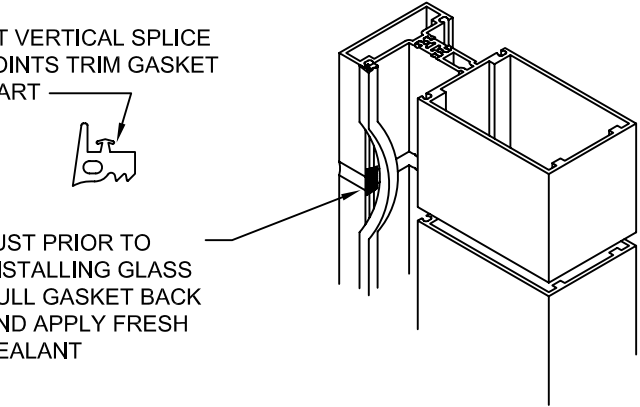


INSTALL COMPLETE GASKET ASSEMBLY THEN PULL BACK CORNERS AND APPLY SEALANT JUST PRIOR TO INSTALLING GLASS

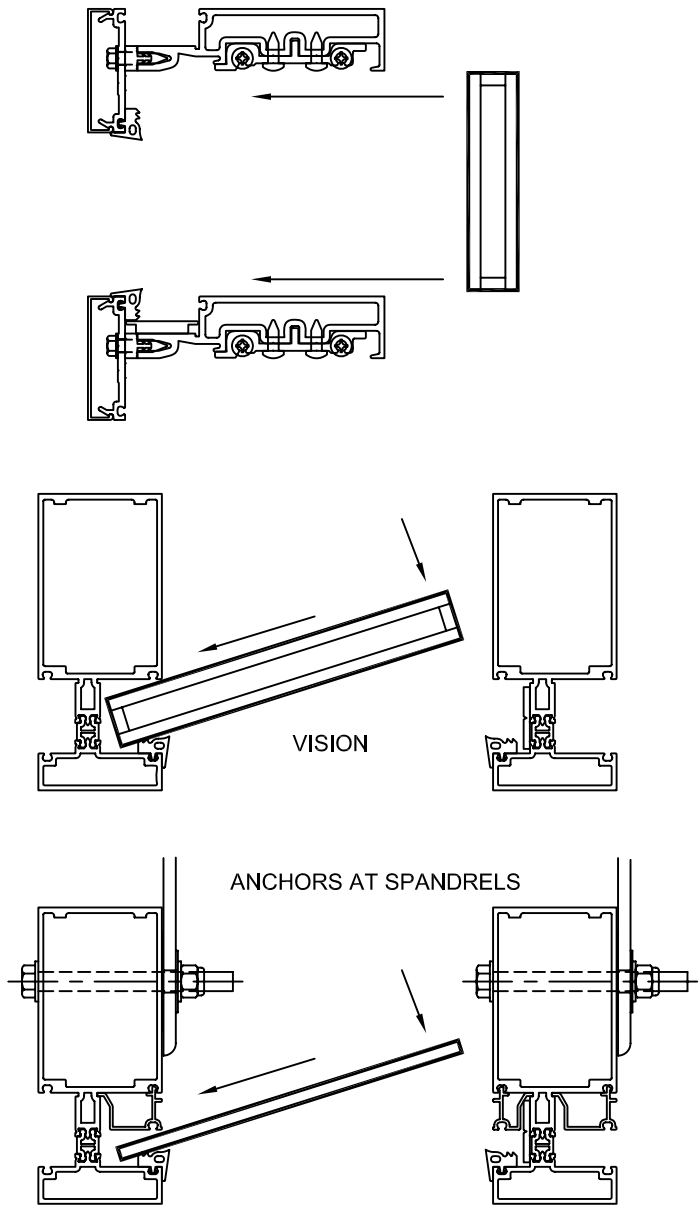
STEP - 16 INTERIOR GLAZING

AT VERTICAL SPLICE JOINTS TRIM GASKET DART

JUST PRIOR TO INSTALLING GLASS PULL GASKET BACK AND APPLY FRESH SEALANT



INSTALL GLASS LIFTING ABOVE SILL AND INSERTING INTO DEEP VERTICAL POCKET AS SHOWN.



STEP - 16 INTERIOR GLAZING

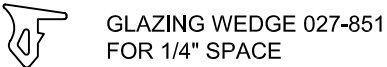
AFTER THE GLASS IS LOWERED ONTO THE SETTING BLOCKS AND CENTERED HORIZONTALLY LIFT THE GLASS SLIGHTLY AND PUSH FORWARD INTO THE EXTERIOR GASKETS.

REFERENCE - FGMA GLAZING MANUAL IN THE "GLASS SETTING" SECTION.

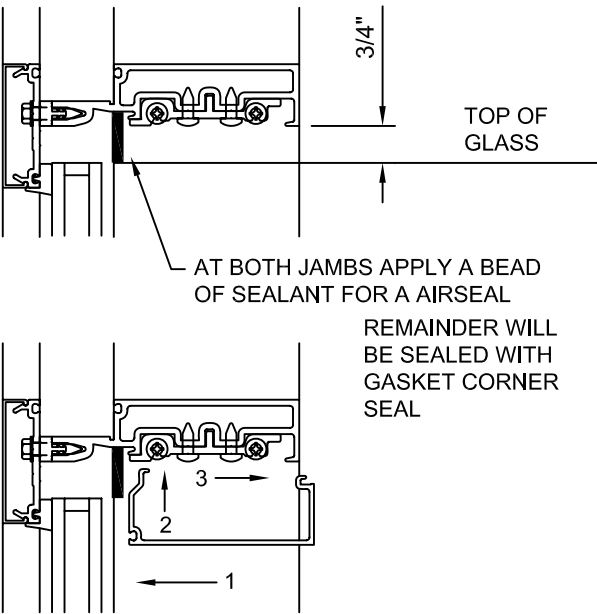
THE ABOVE WILL KEEP THE GLASS EDGE FROM DIGGING AND DEFORMING THE SETTING BLOCK. INSTALL A SHORT PIECE OF GLAZING WEDGE AT THE SETTING BLOCKS AS A TEMPORARY.

INSTALL A SHORT PIECE OF GLAZING WEDGE AT THE TWO VERTICALS AS A TEMPORARY. LOCATE TOWARDS THE TOP OF THE LITE.

MAY LUBRICATE WITH WATER AS REQUIRED



INSTALL TOP INTERIOR HORIZONTAL STOPS



AFTER THE STOP IS INSTALLED USE GLAZING WEDGE TEMPORARIES.



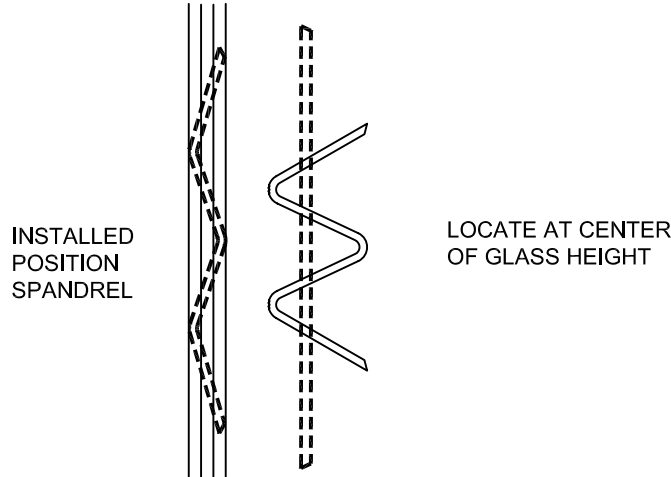
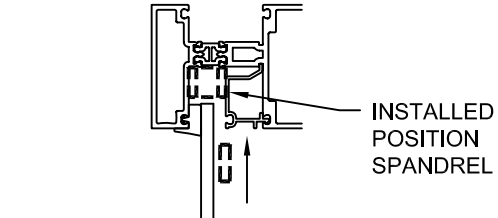
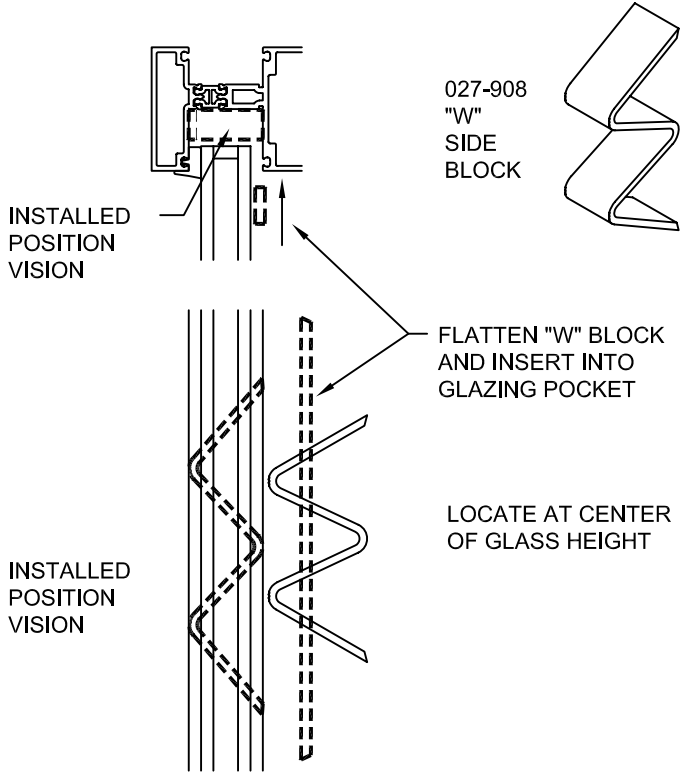
1600 SYSTEM³
INSTALLATION INSTRUCTIONS

PART NUMBER
163-970 9 OF 15

95455-36
03/12/07
DRAWING:
ORDER:
SHT:

STEP - 16 INTERIOR GLAZING

INSTALL "W" SIDE BLOCKS INTO VERTICAL DEEP POCKETS.



STEP - 16 INTERIOR GLAZING

INSTALL GLAZING WEDGE GASKET



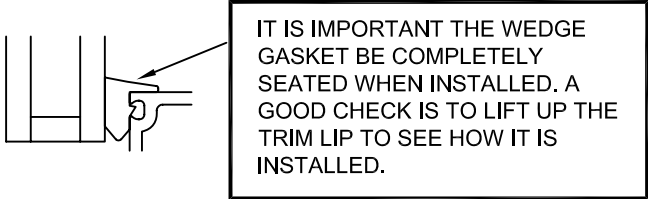
GLAZING WEDGE 027-851 FOR 1/4" SPACE

IN TEMPERATURES COLDER THAN 50 DEGREES F. ARRANGEMENTS SHOULD BE MADE TO KEEP THE GASKETS WARM UNTIL INSTALLATION OF GASKETS AND GLASS. THIS WILL PREVENT EXCESSIVE GLAZING PRESSURE ON THE GLASS EDGE DUE TO COLD, STIFF GASKETS.

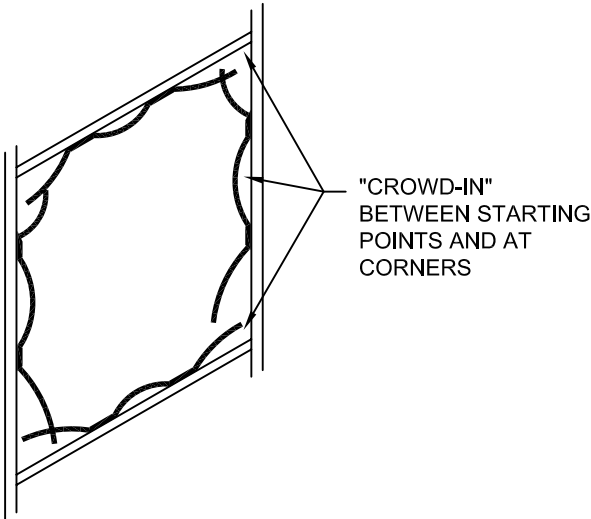
GASKETS CAN BECOME DEFORMED DURING STORAGE IN CARTONS. REMOVE GASKETS FROM CARTONS SEVERAL HOURS PRIOR TO USE AND ALLOW TO LAY FLAT OR HANG OVER RACK. TEMPERATURES SHOULD BE AT LEAST 50 DEGREES F.

APPLY WEDGE GASKETS IN THE SHALLOW POCKET SIDES FIRST TO REDUCE ANY POSSIBLE ROTATION OF THE APPLIED PRESSURE PLATE.

WHEN STARTING THE WEDGE GASKET THE BEST PLACE TO START IS NEAR A TEMPORARY. CUT THE WEDGE 1/8" TO 1/4" PER FOOT LONG FOR GASKET "CROWD-IN". THE "CROWD-IN" TO BE BETWEEN STARTING POINTS AND AT CORNERS. DO NOT STRETCH TO FIT. CORNERS GET SEALED SEE DETAIL BELOW.

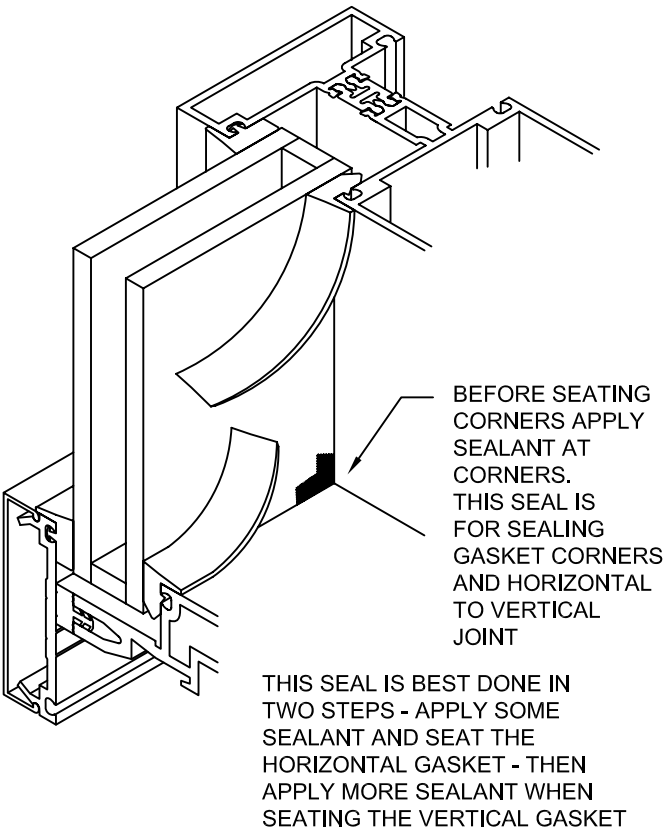


WATER MAY BE USED TO LUBRICATE WEDGE GASKET. BEFORE SEALING CORNERS WIPE GASKET AND CORNER DRY WITH A CLEAN RAG. BEST METHOD IS TO LEAVE CORNERS OUT FOR SOME TIME TO LET WATER EVAPORATE AND WIPE CLEAN.



IF THE INSTALLATION OF THE WEDGE REQUIRES EXCESSIVE FORCE OR THE WEDGE DOES NOT PROVIDE ENOUGH COMPRESSION ON THE EXTERIOR FIXED GASKET, CONTACT YOUR KAWNEER PROJECT MANAGER IMMEDIATELY.

STEP - 16 INTERIOR GLAZING



RE-GLAZING

INTERIOR GLAZED VISION LITE

ORDER NEW

1 - FIXED GASKET ASSEMBLY

2 - WEDGE GASKET MATERIAL

REMOVE

1 - EXISTING WEDGE GASKET

2 - TOP INTERIOR STOP

3 - GLASS TO BE REPLACED

CLEAN METAL AND GLAZE NEW GLASS PER INTERIOR GLAZING INSTRUCTIONS STEP #16

RE-GLAZING

INTERIOR GLAZED LITES TO BE

RE-GLAZED FROM THE EXTERIOR

ORDER NEW

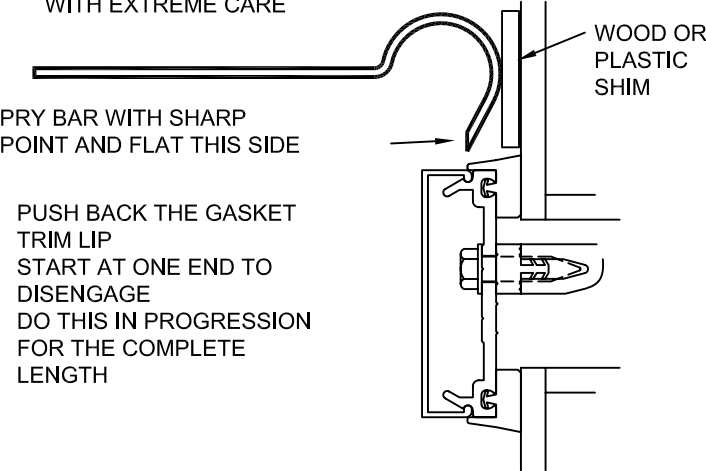
1 - FIXED GASKET ASSEMBLY

2 - WEDGE GASKET MATERIAL FOR VERTICALS AND SILL

3 - FIXED GASKET MATERIAL FOR BOTH SIDES OF TOP PRESSURE PLATE

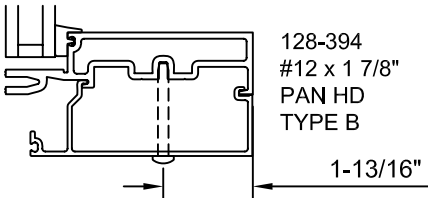
4 - NEW TOP EXTERIOR COVER IF EXISTING COVER CAN NOT BE SAVED

COVERS CAN BE SAVED IF TOLERANCES ARE NOT TO TIGHT AND THE COVER IS REMOVED WITH EXTREME CARE



NEXT REMOVE TOP PRESSURE PLATE, GASKETS AND GLASS. THE GASKET ASSEMBLY FOR THE LITE ABOVE WILL NEED TO HAVE THE BOTTOM GASKET CUT FROM THE ASSEMBLY

SCREW APPLY TOP INTERIOR STOP WITH 2 128-394 SCREWS 6" FROM EACH END



CLEAN METAL AND RE-GLAZE PER EXTERIOR GLAZING INSTRUCTIONS STEPS #17, #18 AND #19



1600 SYSTEM³
INSTALLATION INSTRUCTIONS

PART NUMBER
163-970 10 OF 15

95455-36
03/12/07

DRAWING:

ORDER:

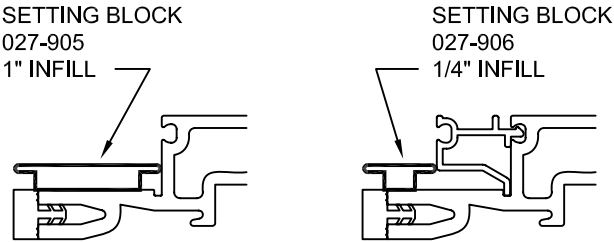
SHT:

STEP - 17 EXTERIOR GLAZING

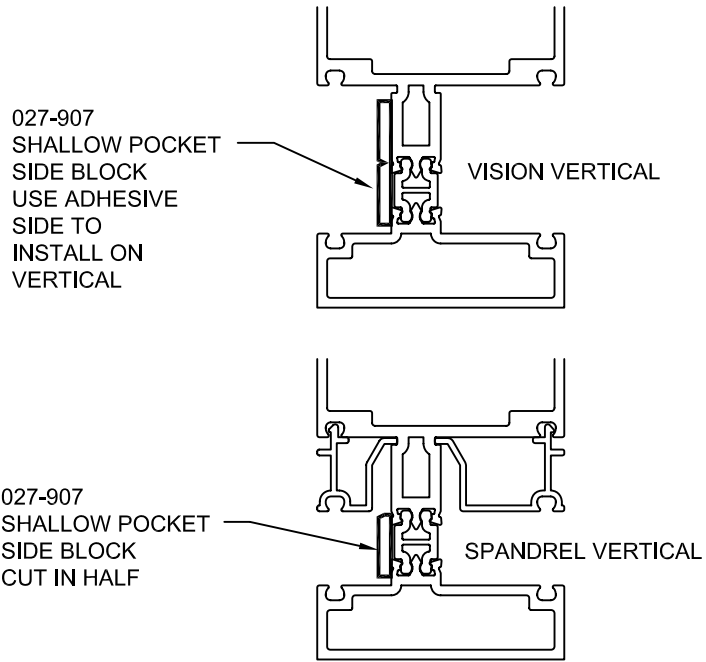
IT IS ESSENTIAL THAT ALL GUTTERS AT HORIZONTALS BE CLEANED PRIOR TO GLAZING.

THIS IS NECESSARY TO AVOID CLOGGING OF WEEP SYSTEMS AS WELL AS STAINING OF EXTERIOR METAL AND GLASS SURFACES.

INSTALL SETTING BLOCKS LOCATING PER APPROVED SHOP DRAWINGS.



INSTALL SIDE BLOCKS AT SHALLOW POCKET. LOCATE AT CENTER OF GLASS HEIGHT.



NOTE - GASKET ASSEMBLIES ARE PREFERRED IN ORDER TO MAINTAIN THE GASKET CORNERS WHEN INSTALLING THE GLASS. IF ASSEMBLIES ARE NOT USED SEAL GASKET CORNERS AND ALLOW SEALANT TO CURE SOME BEFORE INSTALLING THE GLASS.

STEP - 17 EXTERIOR GLAZING

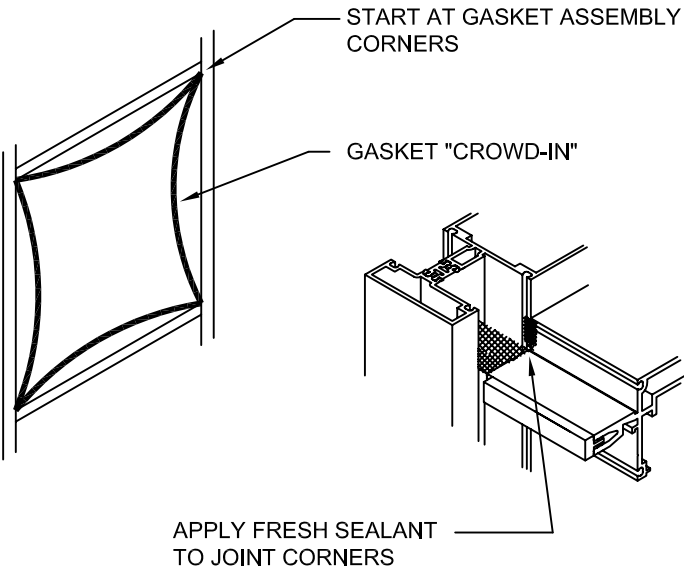
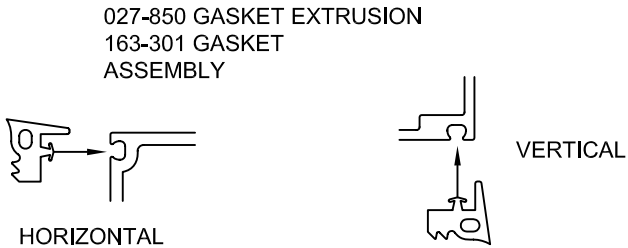
INSTALL INTERIOR GASKET ASSEMBLIES.

GASKET ASSEMBLIES SHOULD BE INSTALLED JUST PRIOR TO GLASS FOR AVOIDING GASKET CONTAMINATION BY JOB SITE DEBRIS.

IN TEMPERATURES COLDER THAN 50 DEGREES F. ARRANGEMENTS SHOULD BE MADE TO KEEP THE GASKETS WARM UNTIL INSTALLATION OF GASKETS AND GLASS. THIS WILL PREVENT EXCESSIVE GLAZING PRESSURE ON THE GLASS EDGE DUE TO COLD, STIFF GASKETS.

GASKETS CAN BECOME DEFORMED DURING STORAGE IN CARTONS. REMOVE GASKETS FROM CARTONS SEVERAL HOURS PRIOR TO USE AND ALLOW TO LAY FLAT OR HANG OVER RACK. TEMPERATURES SHOULD BE AT LEAST 50 DEGREES F.

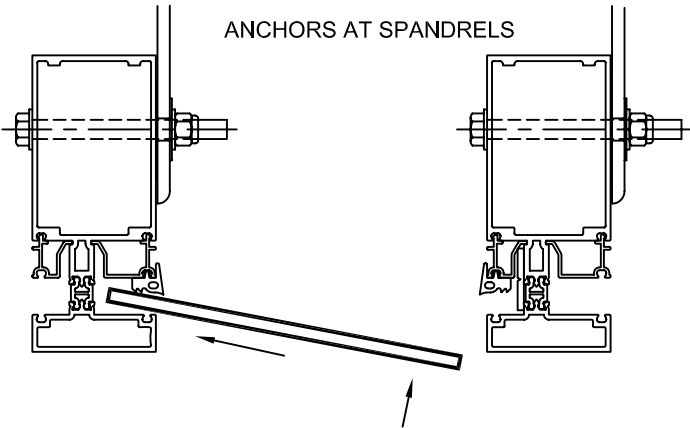
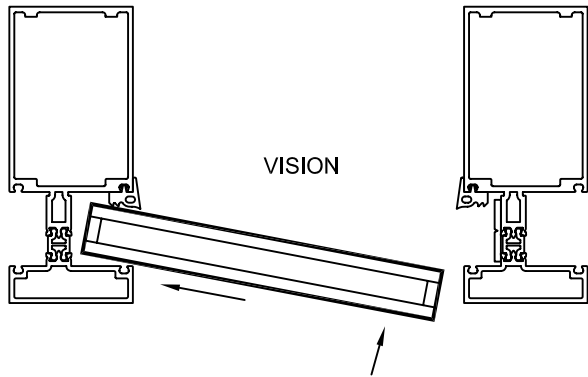
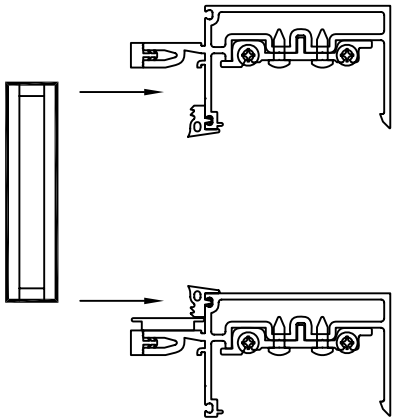
INSTALL GASKET ASSEMBLIES BY STARTING AT THE CORNERS AND WORKING TOWARDS THE CENTER, MAKING SURE THE CORNERS ARE SQUARE. GASKET ASSEMBLIES WILL BE SLIGHTLY LARGE TO ALLOW FOR SOME "CROWD-IN". DO NOT STRETCH, CUT OR SPLICE GASKETS.



INSTALL COMPLETE GASKET ASSEMBLY THEN PULL BACK CORNERS AND APPLY SEALANT JUST PRIOR TO INSTALLING GLASS

STEP - 17 EXTERIOR GLAZING

INSTALL GLASS LIFTING ABOVE SILL AND INSERTING INTO DEEP VERTICAL POCKET AS SHOWN.



STEP - 17 EXTERIOR GLAZING

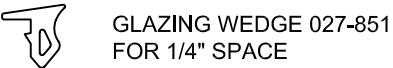
AFTER THE GLASS IS LOWERED ONTO THE SETTING BLOCKS AND CENTERED HORIZONTALLY LIFT THE GLASS SLIGHTLY AND PUSH FORWARD INTO THE INTERIOR GASKETS.

REFERENCE - FGMA GLAZING MANUAL IN THE "GLASS SETTING" SECTION.

THE ABOVE WILL KEEP THE GLASS EDGE FROM DIGGING AND DEFORMING THE SETTING BLOCK. INSTALL A SHORT PIECE OF GLAZING WEDGE AT THE SETTING BLOCKS AS A TEMPORARY.

INSTALL A SHORT PIECES OF GLAZING WEDGE AT THE TWO VERTICALS AS TEMPORARIES. LOCATE TOWARDS THE TOP AND BOTTOM.

MAY LUBRICATE WITH WATER AS REQUIRED



NEXT

FOLLOW STEPS #18 IF EXTERIOR GLAZING OCCURS AT ALL LITES

FOLLOW STEPS #19 IF EXTERIOR GLAZING OCCURS AT SPANDRELS ONLY



1600 SYSTEM³
INSTALLATION INSTRUCTIONS

PART NUMBER
163-970 11 OF 15

95455-36
03/12/07

DRAWING:

ORDER:

SHT:

STEP - 18 EXTERIOR GLAZING
ALL LITES

INSTALL HORIZONTAL PRESSURE PLATES

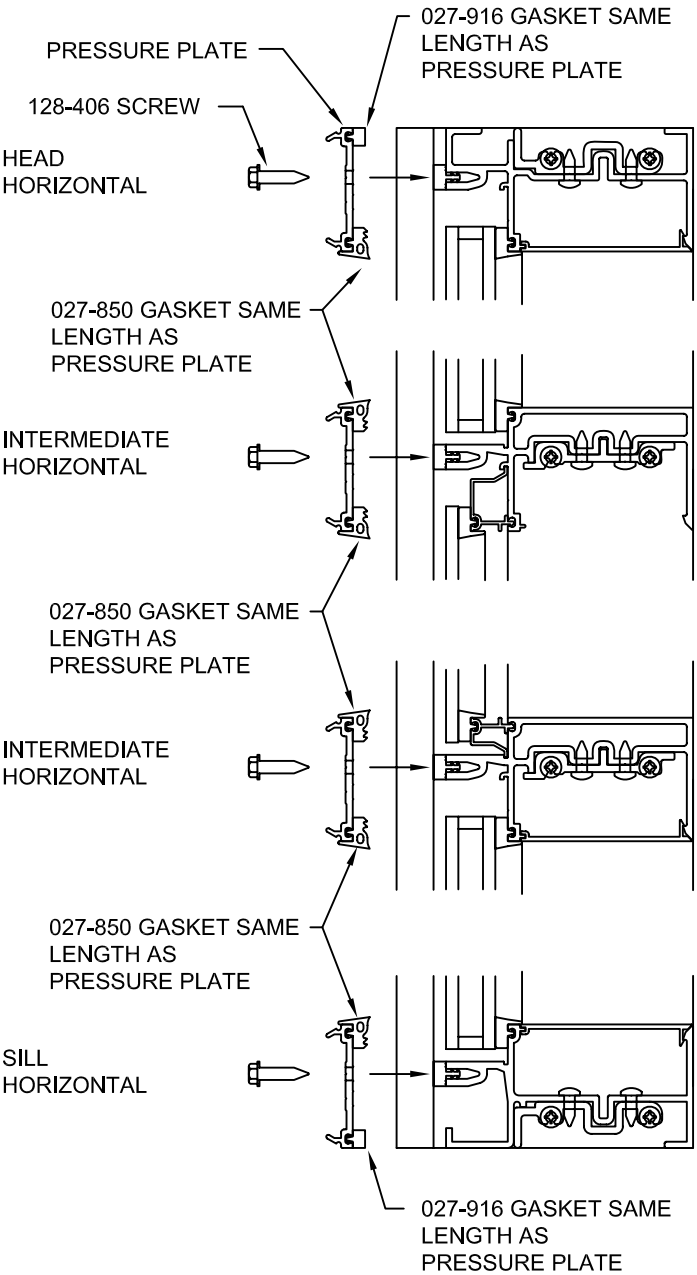
LOCATE WEEP HOLES ON THE TOP SIDE

INSTALL PRESSURE PLATES USING SCREWS
128-406 1/4-14 x 1" HEX WASHER HEAD
TYPE AB. INSTALL GASKETS SHOWN.

SCREWS ARE TO BE LOCATED 3" MAX FROM
EACH END AND 6" ON CENTER.

CENTER HORIZONTAL PRESSURE PLATE LEAVING
A 3/16" GAP AT EACH END. RECOMMEND USING
SHIMS TO MAINTAIN THE 3/16" SPACE. IF NOT
INSTALL TWO SCREWS PART WAY THEN INSTALL
A THIRD SCREW ALL THE WAY. THIS ELIMINATES
LATERAL WALKING OF THE PRESSURE PLATE.

TORQUE ALL SCREWS TO 90 TO 100 INCH POUNDS.



STEP - 18 EXTERIOR GLAZING ALL LITES

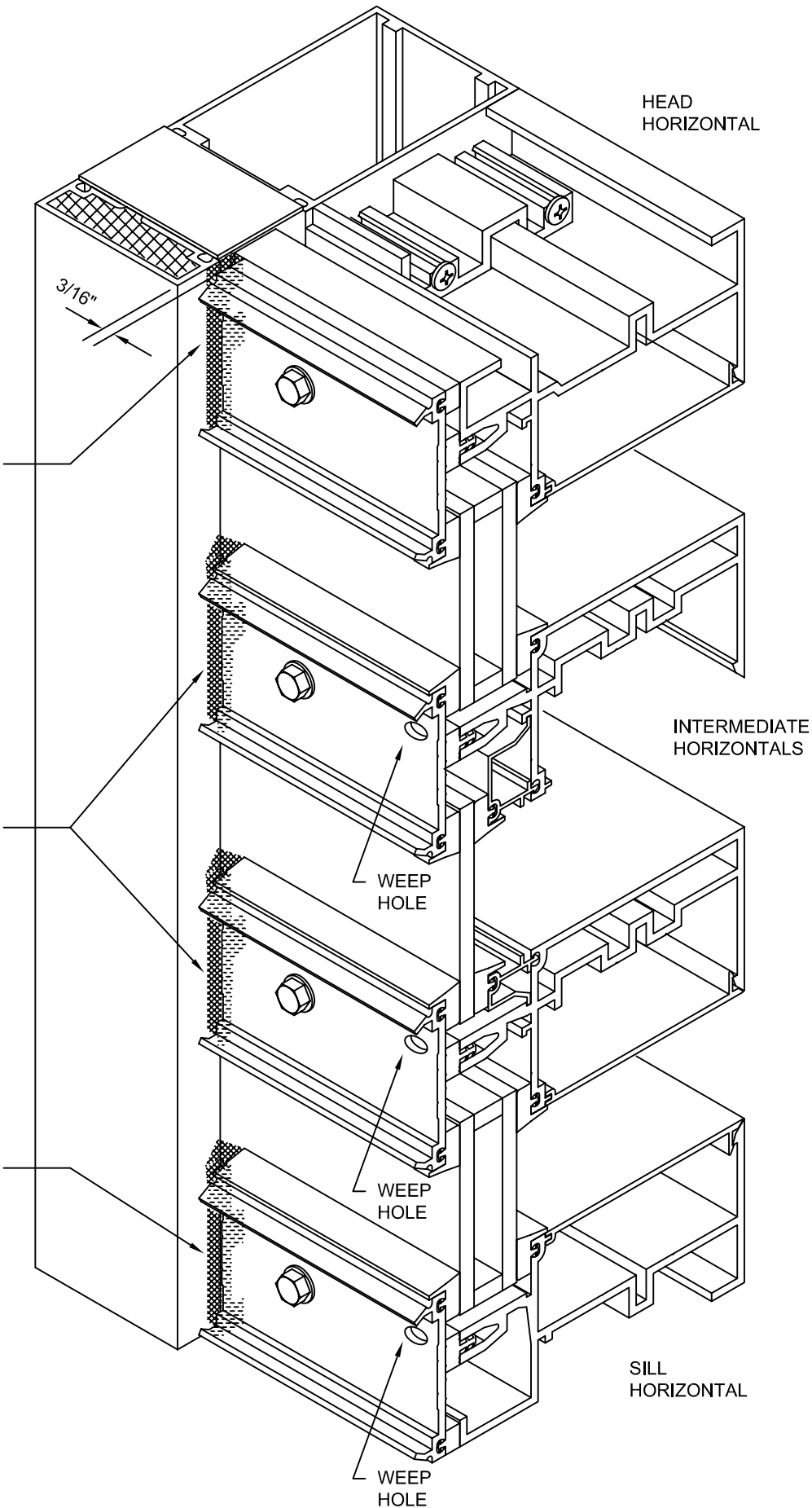
SEAL EXTERIOR
HORIZONTAL TO
VERTICAL

PRESSURE PLATES ARE CUT
3/16" SHORT AT EACH END TO
CREATE A JOINT FOR SEALANT.

SEALANT TO SEAL END OF
PRESSURE PLATE
PERIMETER GASKET
AND THERMAL BREAK

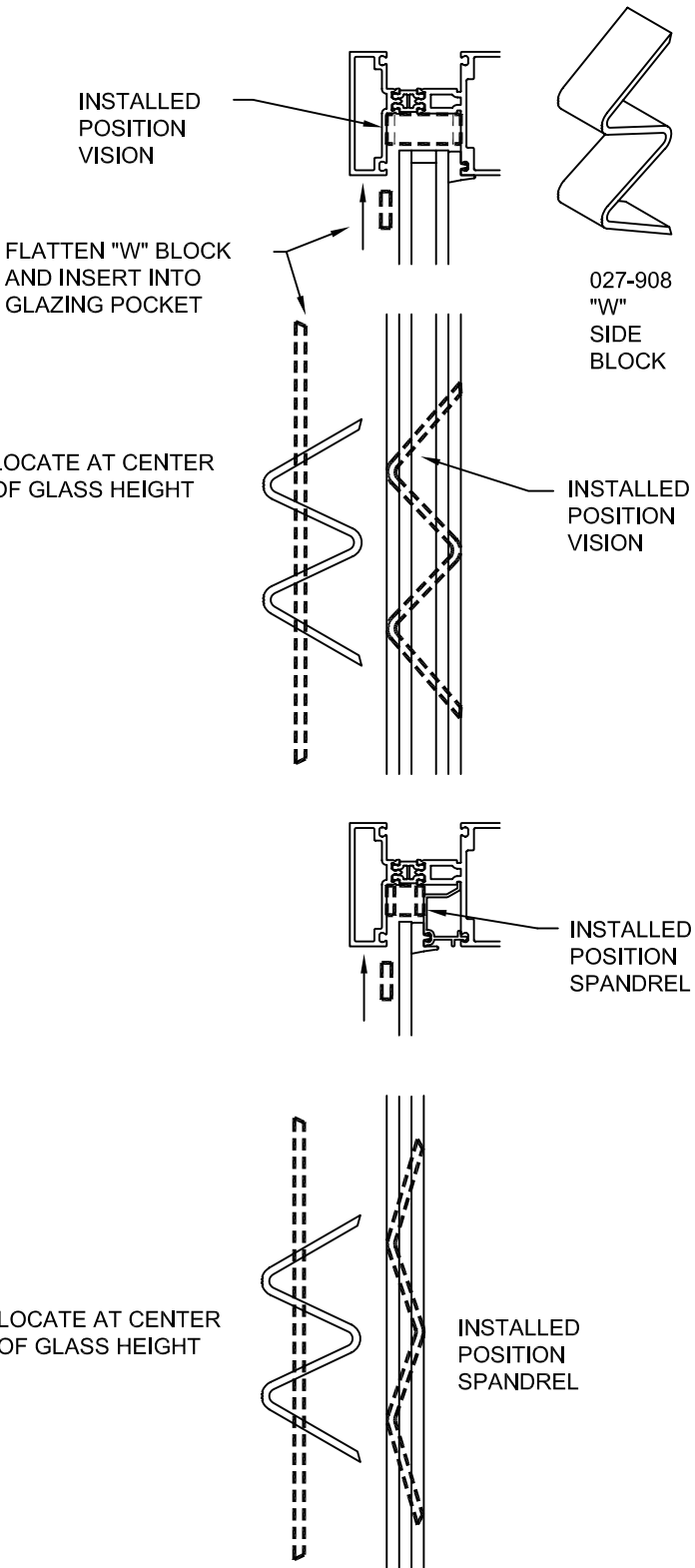
SEALANT TO SEAL END OF
PRESSURE PLATE
GLAZING GASKETS
AND JOIN TO JOINT
PLUG SEAL DONE IN
STEP #8.

SEALANT TO SEAL END OF
PRESSURE PLATE
GLAZING/PERIMETER GASKET
AND JOIN TO JOINT
PLUG SEAL DONE IN
STEP #8.



STEP - 18 EXTERIOR GLAZING

INSTALL "W" SIDE BLOCKS INTO VERTICAL
DEEP POCKETS.



1600 SYSTEM³
INSTALLATION INSTRUCTIONS

PART NUMBER
163-970 12 OF 15

95455-36
03/12/07

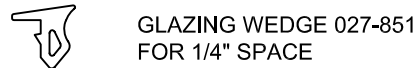
DRAWING:

ORDER:

SHT:

STEP - 18 EXTERIOR GLAZING
ALL LITES

INSTALL GLAZING WEDGE GASKET



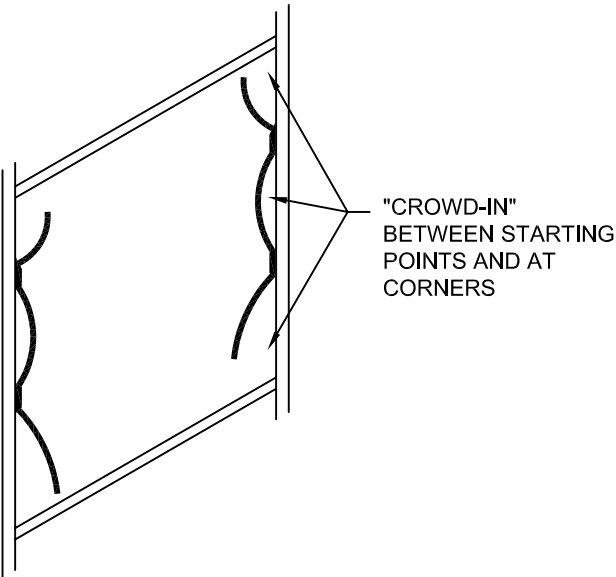
IN TEMPERATURES COLDER THAN 50 DEGREES F. ARRANGEMENTS SHOULD BE MADE TO KEEP THE GASKETS WARM UNTIL INSTALLATION OF GASKETS AND GLASS. THIS WILL PREVENT EXCESSIVE GLAZING PRESSURE ON THE GLASS EDGE DUE TO COLD, STIFF GASKETS.

GASKETS CAN BECOME DEFORMED DURING STORAGE IN CARTONS. REMOVE GASKETS FROM CARTONS SEVERAL HOURS PRIOR TO USE AND ALLOW TO LAY FLAT OR HANG OVER RACK. TEMPERATURES SHOULD BE AT LEAST 50 DEGREES F.

APPLY WEDGE GASKETS IN THE SHALLOW POCKET SIDES FIRST TO REDUCE ANY POSSIBLE ROTATION OF THE APPLIED PRESSURE PLATE.

WHEN STARTING THE WEDGE GASKET THE BEST PLACE TO START IS NEAR A TEMPORARY. CUT THE WEDGE 1/8" TO 1/4" PER FOOT LONG FOR GASKET "CROWD-IN". THE "CROWD-IN" TO BE BETWEEN STARTING POINTS AND AT CORNERS. DO NOT STRETCH TO FIT. CORNERS GET SEALED SEE DETAIL BELOW.

WATER MAY BE USED TO LUBRICATE WEDGE GASKET. BEFORE SEALING CORNERS WIPE GASKET AND CORNER DRY WITH A CLEAN RAG. BEST METHOD IS TO LEAVE CORNERS OUT FOR SOME TIME TO LET WATER EVAPORATE AND WIPE CLEAN.



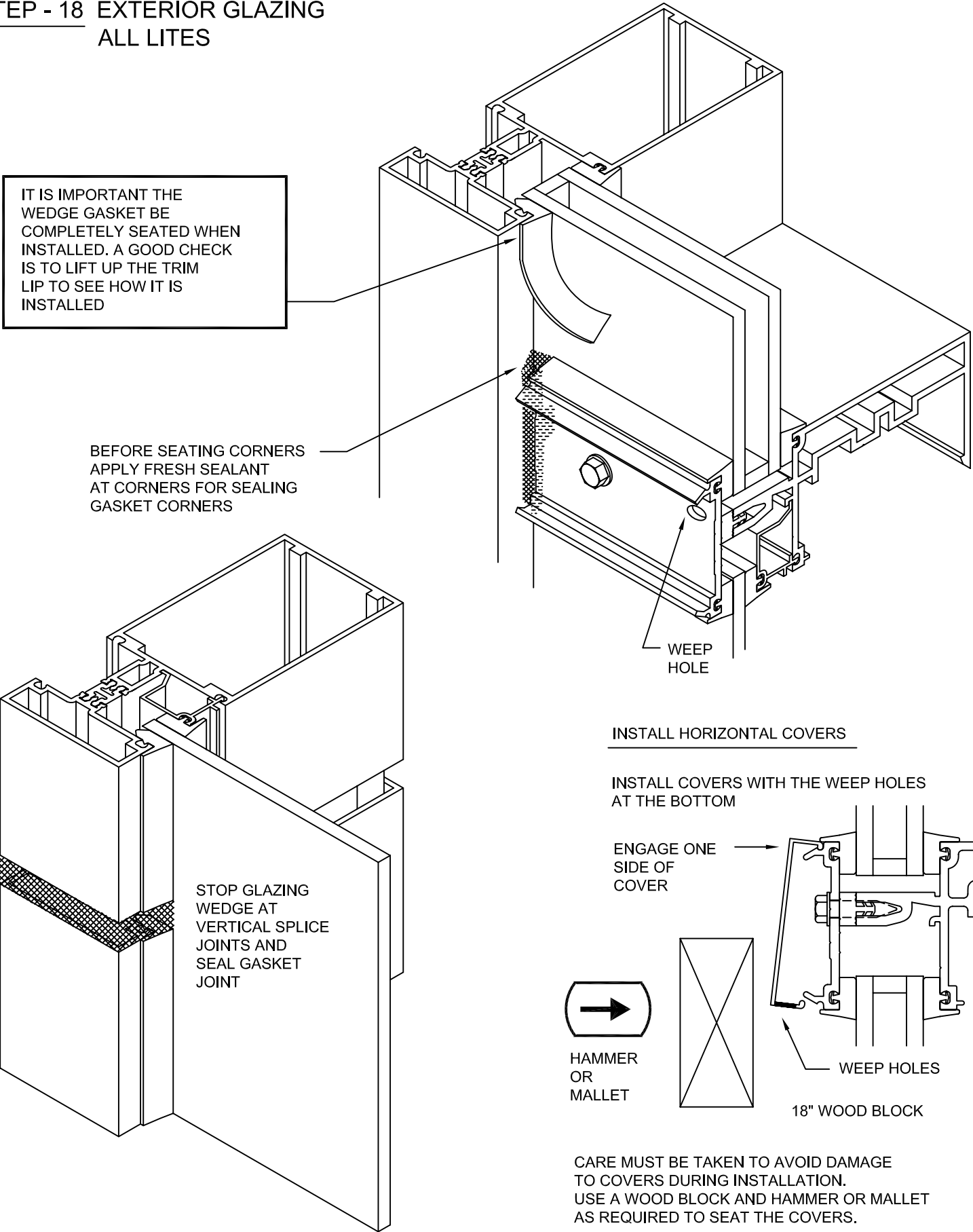
IF THE INSTALLATION OF THE WEDGE REQUIRES EXCESSIVE FORCE OR THE WEDGE DOES NOT PROVIDE ENOUGH COMPRESSION ON THE EXTERIOR FIXED GASKET, CONTACT YOUR KAWNEER PROJECT MANAGER IMMEDIATELY.

STEP - 18 EXTERIOR GLAZING
ALL LITES

IT IS IMPORTANT THE WEDGE GASKET BE COMPLETELY SEATED WHEN INSTALLED. A GOOD CHECK IS TO LIFT UP THE TRIM LIP TO SEE HOW IT IS INSTALLED

BEFORE SEATING CORNERS
APPLY FRESH SEALANT
AT CORNERS FOR SEALING
GASKET CORNERS

STOP GLAZING
WEDGE AT
VERTICAL SPLICE
JOINTS AND
SEAL GASKET
JOINT



CARE MUST BE TAKEN TO AVOID DAMAGE TO COVERS DURING INSTALLATION. USE A WOOD BLOCK AND HAMMER OR MALLET AS REQUIRED TO SEAT THE COVERS.

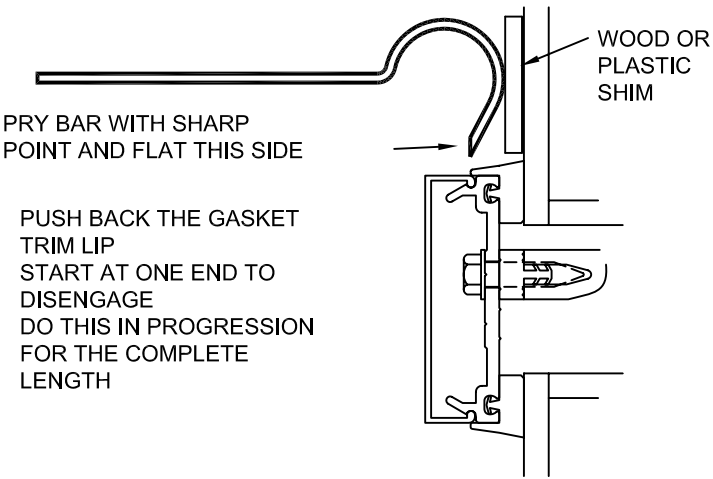
RE-GLAZING

EXTERIOR GLAZED LITES

ORDER NEW

- 1 - FIXED GASKET ASSEMBLY
- 2 - WEDGE GASKET MATERIAL FOR VERTICALS AND SILL
- 3 - FIXED GASKET MATERIAL FOR BOTH SIDES OF TOP PRESSURE PLATE
- 4 - NEW TOP EXTERIOR COVER IF EXISTING COVER CAN NOT BE SAVED

COVERS CAN BE SAVED IF TOLERANCES ARE NOT TO TIGHT AND THE COVER IS REMOVED WITH EXTREME CARE



NEXT REMOVE TOP PRESSURE PLATE, GASKETS AND GLASS.

CLEAN METAL AND RE-GLAZE PER EXTERIOR GLAZING INSTRUCTIONS STEPS #17, #18 OR #19



1600 SYSTEM³
INSTALLATION INSTRUCTIONS

PART NUMBER
163-970 13 OF 15

95455-36
03/12/07

DRAWING:

ORDER:

SHT:

STEP - 19 EXTERIOR GLAZING SPANDRELS ONLY

GLAZE SPANDREL GLASS PER STEP #17

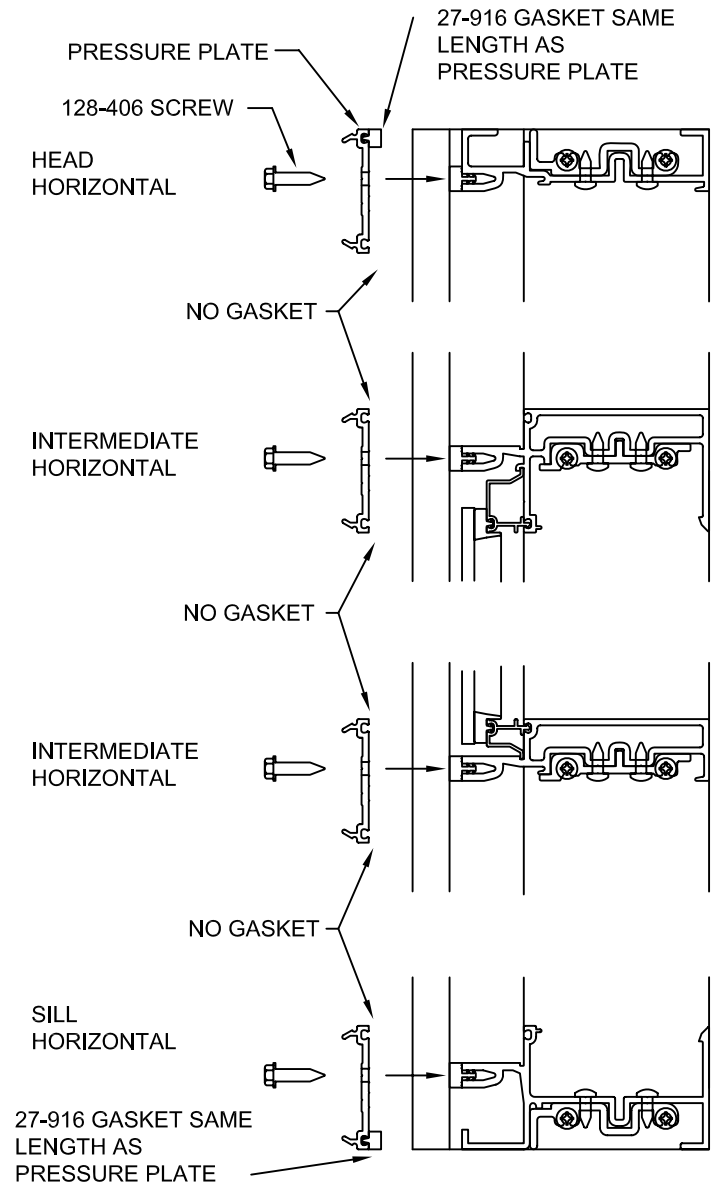
- INSTALL HORIZONTAL PRESSURE PLATES
- LOCATE WEEP HOLES ON THE TOP SIDE

INSTALL PRESSURE PLATES USING SCREWS
128-406 1/4-14 X 1" HEX WASHER HEAD
TYPE AB.

SCREWS ARE TO BE LOCATED 3" MAX FROM
EACH END AND 6" ON CENTER.

CENTER HORIZONTAL PRESSURE PLATE LEAVING
A 3/16" GAP AT EACH END. RECOMMEND USING
SHIMS TO MAINTAIN THE 3/16" SPACE. IF NOT
INSTALL TWO SCREWS PART WAY THEN INSTALL
A THIRD SCREW ALL THE WAY. THIS ELIMINATES
LATERAL WALKING OF THE PRESSURE PLATE.

TORQUE ALL SCREWS TO 50 INCH POUNDS.



STEP - 19 EXTERIOR GLAZING SPANDRELS ONLY

SEAL EXTERIOR HORIZONTAL TO VERTICAL

PRESSURE PLATES ARE CUT 3/16" SHORT AT EACH END TO
CREATE A JOINT FOR SEALANT.

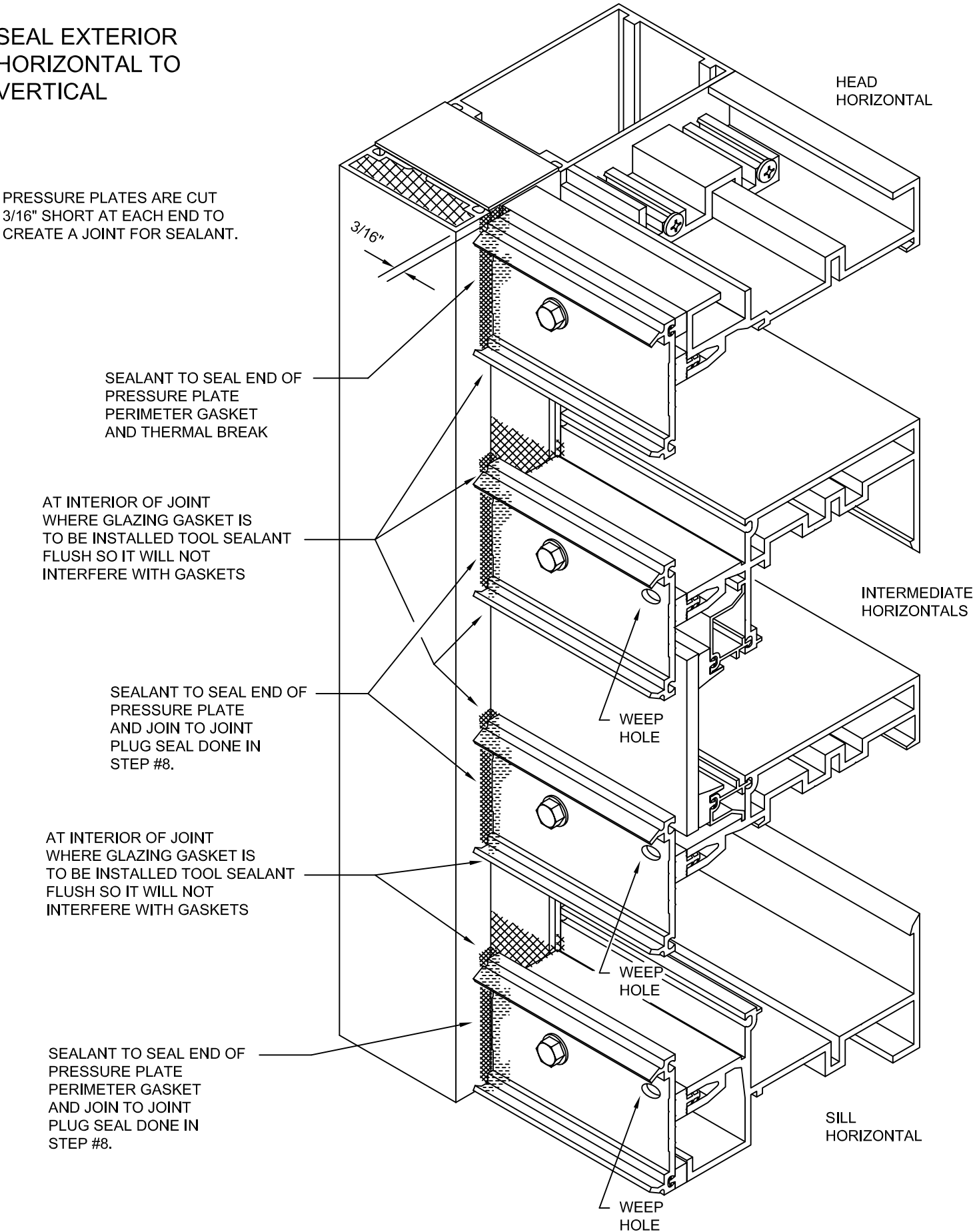
SEALANT TO SEAL END OF PRESSURE PLATE
PERIMETER GASKET AND THERMAL BREAK

AT INTERIOR OF JOINT WHERE GLAZING GASKET IS
TO BE INSTALLED TOOL SEALANT FLUSH SO IT WILL NOT
INTERFERE WITH GASKETS

SEALANT TO SEAL END OF PRESSURE PLATE
AND JOIN TO JOINT PLUG SEAL DONE IN
STEP #8.

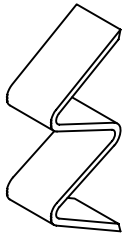
AT INTERIOR OF JOINT WHERE GLAZING GASKET IS
TO BE INSTALLED TOOL SEALANT FLUSH SO IT WILL NOT
INTERFERE WITH GASKETS

SEALANT TO SEAL END OF PRESSURE PLATE
PERIMETER GASKET AND JOIN TO JOINT
PLUG SEAL DONE IN STEP #8.

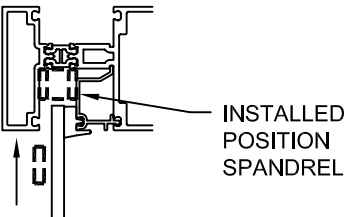


STEP - 19 EXTERIOR GLAZING

INSTALL "W" SIDE BLOCKS INTO VERTICAL
DEEP POCKETS.

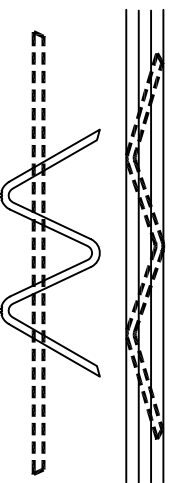


027-908
"W"
SIDE
BLOCK



INSTALLED
POSITION
SPANDREL

LOCATE AT CENTER
OF GLASS HEIGHT



INSTALLED
POSITION
SPANDREL



1600 SYSTEM³
INSTALLATION INSTRUCTIONS

PART NUMBER
163-970 14 OF 15

95455-36
03/12/07

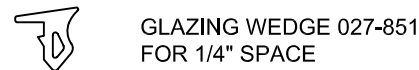
DRAWING:

ORDER:

SHT:

STEP - 19 EXTERIOR GLAZING
SPANDRELS ONLY

INSTALL GLAZING WEDGE GASKET



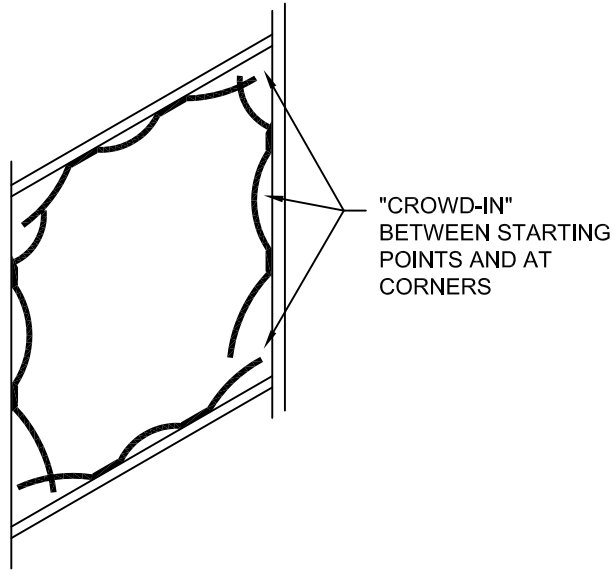
IN TEMPERATURES COLDER THAN 50 DEGREES F. ARRANGEMENTS SHOULD BE MADE TO KEEP THE GASKETS WARM UNTIL INSTALLATION OF GASKETS AND GLASS. THIS WILL PREVENT EXCESSIVE GLAZING PRESSURE ON THE GLASS EDGE DUE TO COLD, STIFF GASKETS.

GASKETS CAN BECOME DEFORMED DURING STORAGE IN CARTONS. REMOVE GASKETS FROM CARTONS SEVERAL HOURS PRIOR TO USE AND ALLOW TO LAY FLAT OR HANG OVER RACK. TEMPERATURES SHOULD BE AT LEAST 50 DEGREES F.

APPLY WEDGE GASKETS IN THE SHALLOW POCKET SIDES FIRST TO REDUCE ANY POSSIBLE ROTATION OF THE APPLIED PRESSURE PLATE.

WHEN STARTING THE WEDGE GASKET THE BEST PLACE TO START IS NEAR A TEMPORARY. CUT THE WEDGE 1/8" TO 1/4" PER FOOT LONG FOR GASKET "CROWD-IN". THE "CROWD-IN" TO BE BETWEEN STARTING POINTS AND AT CORNERS. DO NOT STRETCH TO FIT. CORNERS GET SEALED SEE DETAIL BELOW.

WATER MAY BE USED TO LUBRICATE WEDGE GASKET. BEFORE SEALING CORNERS WIPE GASKET AND CORNER DRY WITH A CLEAN RAG. BEST METHOD IS TO LEAVE CORNERS OUT FOR SOME TIME TO LET WATER EVAPORATE AND WIPE CLEAN.



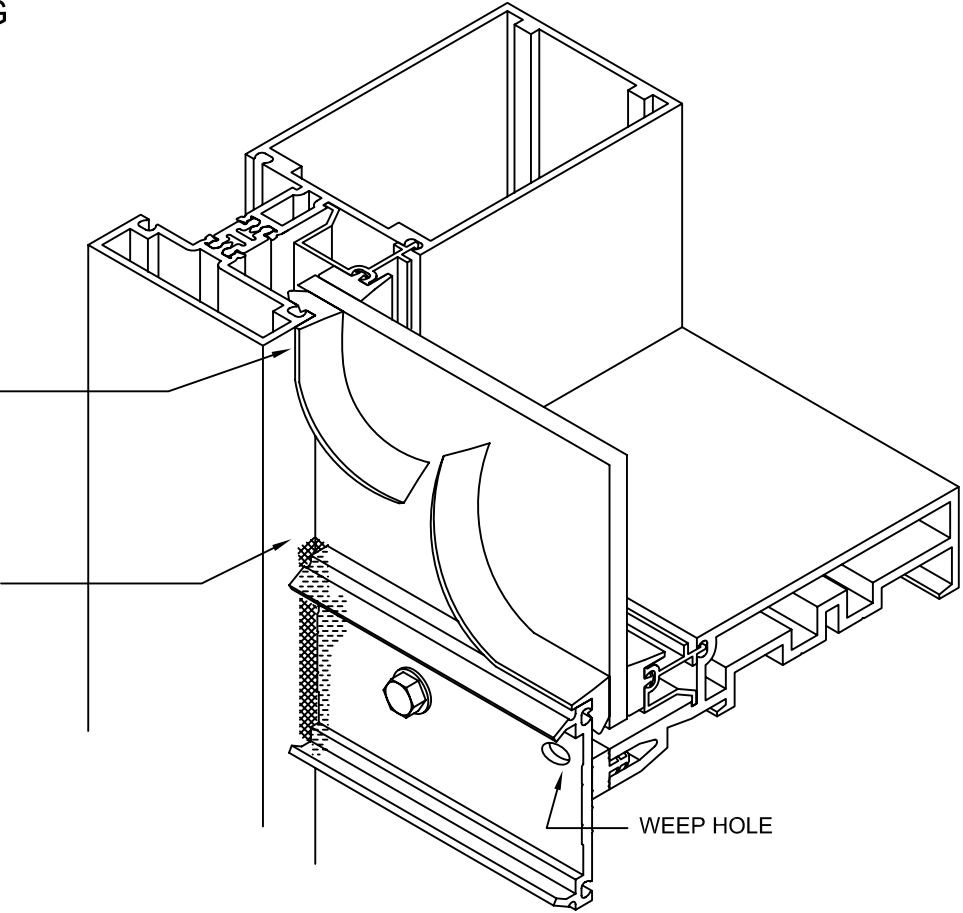
IF THE INSTALLATION OF THE WEDGE REQUIRES EXCESSIVE FORCE OR THE WEDGE DOES NOT PROVIDE ENOUGH COMPRESSION ON THE EXTERIOR FIXED GASKET, CONTACT YOUR KAWNEER PROJECT MANAGER IMMEDIATELY.

STEP - 19 EXTERIOR GLAZING
SPANDRELS ONLY

IT IS IMPORTANT THE WEDGE GASKET BE COMPLETELY SEATED WHEN INSTALLED. A GOOD CHECK IS TO LIFT UP THE TRIM LIP TO SEE HOW IT IS INSTALLED BOTH VERTICALLY AND HORIZONTALLY

BEFORE SEATING CORNERS APPLY FRESH SEALANT AT CORNERS FOR SEALING GASKET CORNERS

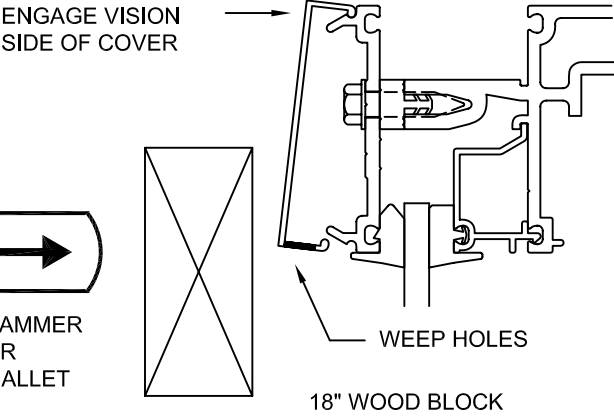
THIS SEAL IS BEST DONE IN TWO STEPS - APPLY SOME SEALANT AND SEAT THE HORIZONTAL GASKET - THEN APPLY MORE SEALANT WHEN SEATING THE VERTICAL GASKET



REFERENCE STEP 18 SHEET 12 FOR VERTICAL SPLICE DETAIL

INSTALL HORIZONTAL COVERS

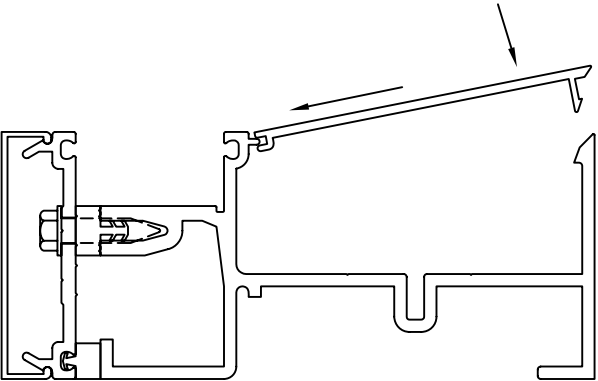
INSTALL COVERS WITH THE WEEP HOLES AT THE BOTTOM



CARE MUST BE TAKEN TO AVOID DAMAGE TO COVERS DURING INSTALLATION. USE A WOOD BLOCK AND HAMMER OR MALLET AS REQUIRED TO SEAT THE COVERS.

INSTALL INTERIOR
FILLERS WHERE
APPLICABLE

FILLERS USED AT EXPOSED AREAS ONLY



GLAZE VISION LITES
SAME AS STEP #16

RE-GLAZING

SAME AS STEPS
#16 AND #17