

THESE DRAWINGS ARE THE SOLE AND EXCLUSIVE PROPERTY OF KAWNEER AND CONTAIN SENSITIVE, PRIVILEGED OR CONFIDENTIAL INFORMATION WHICH MAY BE USED ONLY FOR ITS BENEFIT. THE DISCLOSURE OF THESE DRAWINGS TO UNAUTHORIZED PERSONS IS STRICTLY PROHIBITED. THIS DOCUMENT AND ALL COPIES MUST BE RETURNED UPON DEMAND.  
© COPYRIGHT KAWNEER COMPANY, INC., 2004

USE THESE INSTRUCTIONS IN CONJUNCTION WITH INSTALLATION INSTRUCTIONS 168-970

**90° OUTSIDE CORNER**

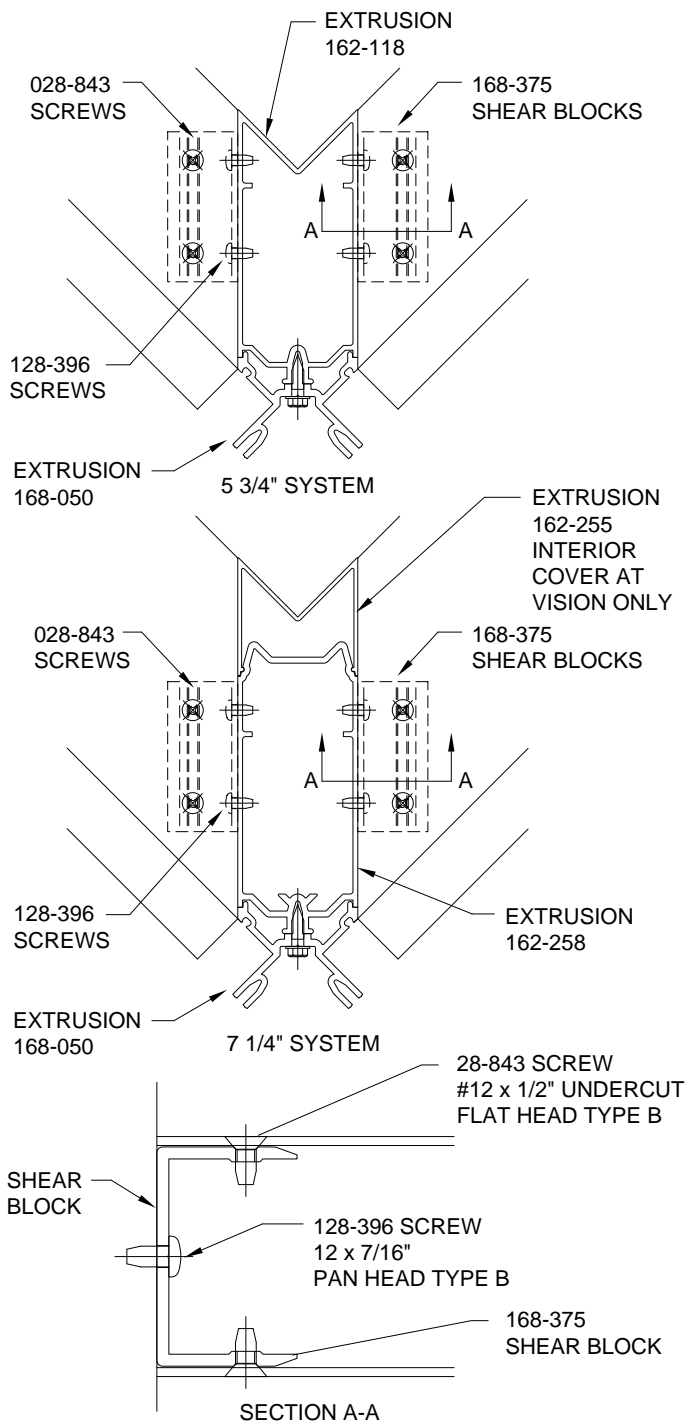
**CORNER NOTES**

STANDARD JOINT PLUGS AND SEALING METHODS ARE USED UNLESS NOTED OTHERWISE IN THE FOLLOWING DETAILS.

GASKETS, PRESSURE PLATES AND EXTERIOR COVERS ARE INSTALLED AND SEAL THE SAME AS SHOWN IN INSTRUCTIONS 162-970.

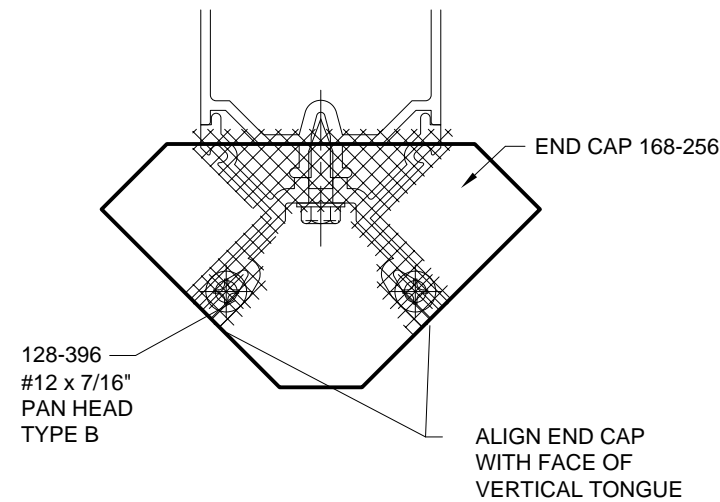
GLAZING TEMPORARIES ARE NOT INCLUDED FOR CORNER CONDITIONS.

**SHEAR BLOCK ASSEMBLY**

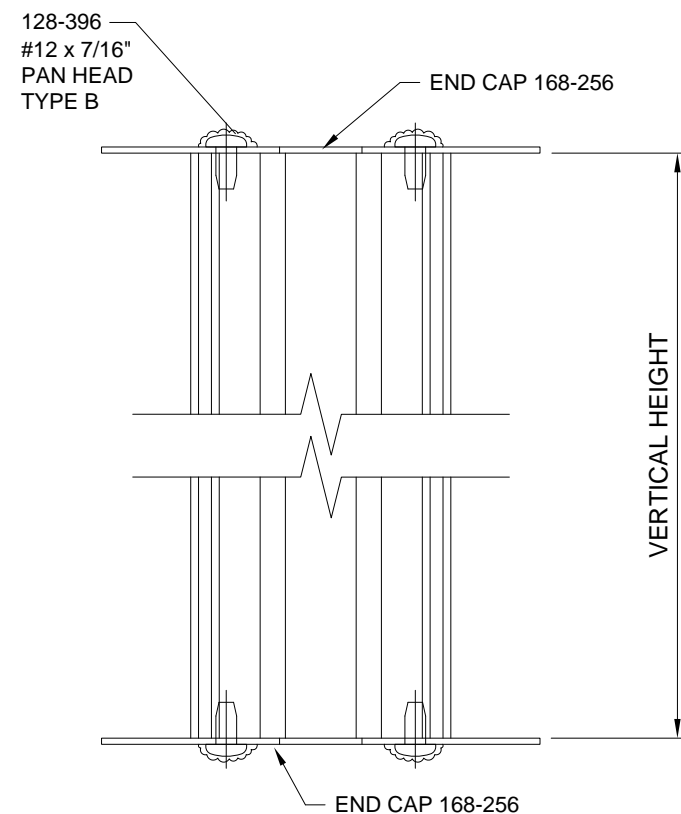


**90° OUTSIDE CORNER**

INSTALL HEAD AND SILL END CAPS WITH 128-396 FASTENERS INTO SCREW RACE. SET IN SEALANT.

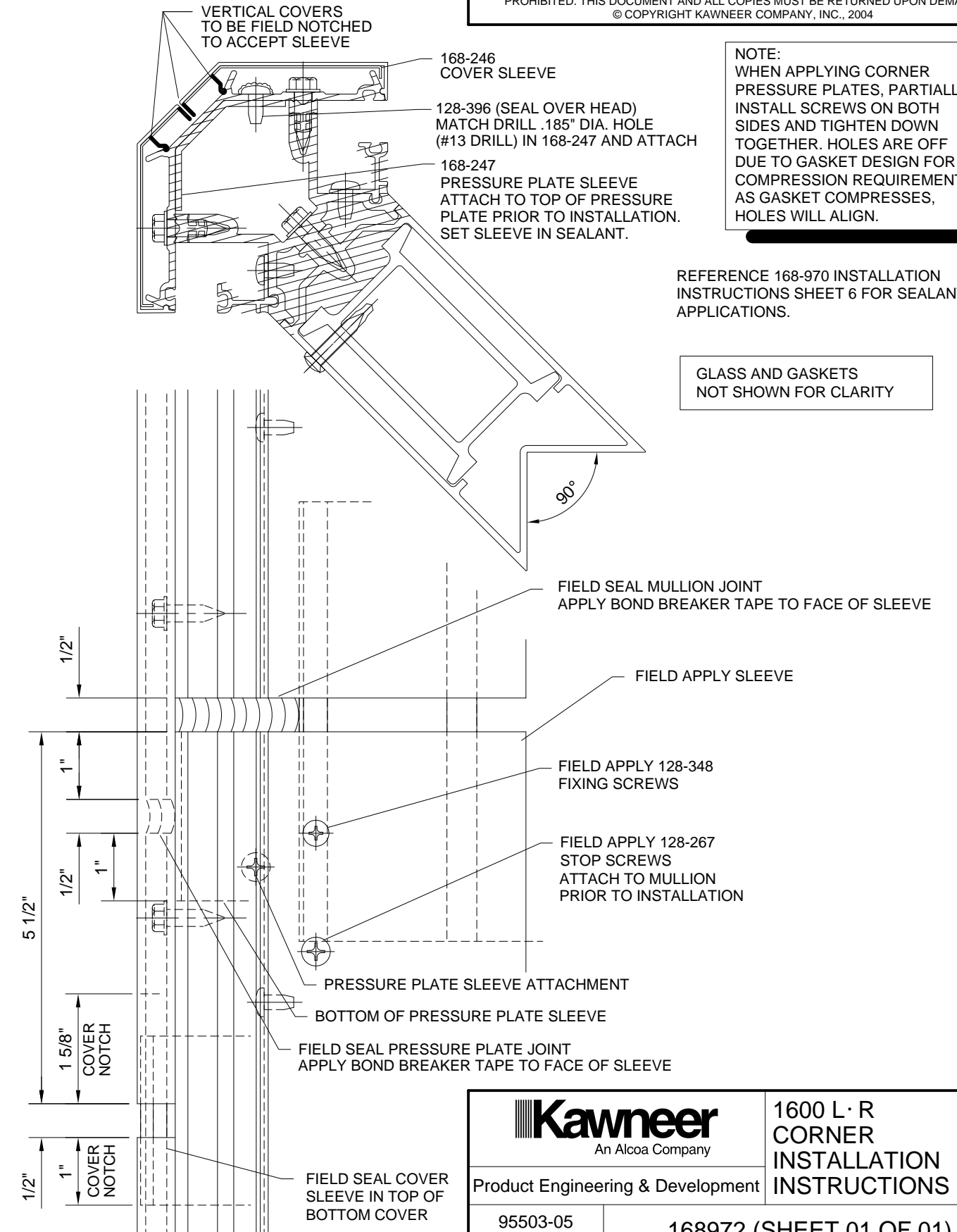


APPLY SEALANT INTO SCREW RACE TO SEAL END OF FASTENER AT TOP AND BOTTOM. TOOL SEALANT AROUND ALL EDGES. SEAL OVER FASTENER HEAD.



**90° OUTSIDE CORNER**

**VERTICAL SPLICE**



**NOTE:**  
WHEN APPLYING CORNER PRESSURE PLATES, PARTIALLY INSTALL SCREWS ON BOTH SIDES AND TIGHTEN DOWN TOGETHER. HOLES ARE OFF DUE TO GASKET DESIGN FOR COMPRESSION REQUIREMENTS. AS GASKET COMPRESSES, HOLES WILL ALIGN.

REFERENCE 168-970 INSTALLATION INSTRUCTIONS SHEET 6 FOR SEALANT APPLICATIONS.

GLASS AND GASKETS NOT SHOWN FOR CLARITY

<p><b>Kawneer</b> An Alcoa Company</p>		<p>1600 L · R CORNER INSTALLATION INSTRUCTIONS</p>
<p>Product Engineering &amp; Development</p>		
<p>95503-05 11/28/05</p>	<p>168972 (SHEET 01 OF 01)</p>	