

MISC. NOTES:		<div>SCHILLING FARMS OFFICE BUILDING</div> <div>FOR MCR SAFETY</div> <div>COLLIERVILLE, TENNESSEE</div>										DRAWN BY: XK CURTAINWALL SPECIALISTS <small>PH: 479-756-1814 FAX: 866-562-4621 SHOPDRAWINGS@XKCURTAINWALL.COM</small>	
SEISMIC DESIGN CRITERIA: S _{Ds} = 0.596 I _E = 1.00 SEISMIC DESIGN CATEGORY: II SITE CLASS: D												DATE	
GROUND SNOW LOAD = 10 PSF												REV.#	
GENERAL NOTES:												DESCRIPTION:	
1) ALL METAL STUDS THAT CURTAIN WALL AND STOREFRONT PRODUCTS ATTACH TO MUST BE 16 GA. OR THICKER. 2) FASTEN WOOD BLOCKING TO SURROUNDING CONDITIONS TO PREVENT BENDING ON CURTAIN WALL AND STOREFRONT PERIMETER FASTENERS.												1ST APPROVAL PRINTS ISSUED FOR:	
GENERAL NOTES:		PRINTS ISSUED FOR:		DESIGN CRITERIA:				PROJECT INFORMATION:				GLASS COMPANY 123 MAIN STREET PHONE: FAX: <div>SHEET NO:</div> <div>001</div>	
<div>1. DO NOT ORDER GLASS OR GLAZING MATERIALS EXCEPT FROM THE FINAL ERECTION DRAWINGS UNLESS RECEIVING WRITTEN AUTHORIZATION FROM THE MANUFACTURING FACILITY.</div> <div>2. XK CURTAINWALL WILL ASSUME NO RESPONSIBILITY FOR ERRORS RESULTING FROM THE USE OF THESE DRAWINGS BY OTHER TRADES.</div> <div>3. FINAL APPROVAL OF THE DRAWINGS CONSTITUTES ACCEPTANCE OF ALL DEVIATIONS TO THE CONTRACT DOCUMENTS.</div> <div>4. LAWS AND BUILDING AND SAFETY CODES GOVERNING THE DESIGN AND USE OF GLAZING ENTRANCE, WINDOW, AND CURTAIN WALL PRODUCTS VARY WIDELY. XK CURTAINWALL DOES NOT CONTROL THE SELECTION OF PRODUCT CONFIGURATIONS, OPERATING HARDWARE OR GLAZING MATERIALS AND ASSUMES NO RESPONSIBILITY THEREOF.</div> <div>5. A BITUMINOUS PAINT/ZINC CHROMATE OR AN EQUAL SEPARATION MATERIAL IS REQUIRED WHEN ALUMINUM COMES IN CONTACT WITH STEEL OR OTHER DISSIMILAR MATERIALS.</div> <div>6. ALL RECOMMENDED HEEL BEADS, TOE BEADS AND CAP BEADS SHOWN IN THESE SHOP DRAWINGS SHOULD BE APPLIED AND TOOLED WATERTIGHT PER THE SEALANT OR CAULKING MANUFACTURER'S RECOMMENDATIONS AS TO SIZE AND COMPATIBILITY WITH ADJACENT MATERIALS.</div> <div>7. ALL GASKETS ARE TO BE THOROUGHLY SEALED AND MADE WATERTIGHT AT BUTT JOINTS AND INTERSECTIONS USING A SKINNING NON-HARDENING SEALANT AS RECOMMENDED BY THE SEALANT MANUFACTURER.</div> <div>8. ALL METAL TO METAL BUTT JOINTS, OVERLAPS AND INTERSECTIONS ARE TO BE SEALED WATERTIGHT.</div> <div>9. ALL PERIMETER CAULKING IS TO BE APPLIED AND TOOLED PER THE MANUFACTURER'S RECOMMENDATIONS.</div> <div>10. PLEASE VERIFY ALL OPENING, REFERENCE, & ANCHOR LOCATION DIMENSIONS.</div> <div>11. ALSO PLEASE VERIFY STRUCTURAL INTEGRITY OF ALL SURROUNDING CONDITIONS.</div>		<div><div>REFERENCE</div><div>(WALLS)</div><div>MEAN BUILD'G HT. (FT.): EXPOSURE CATEGORY: WINDSPEED (MPH): IMPORTANCE FACTOR: RISK CATEGORY: INTERNAL PRESS. COEFF.: TOPOGRAPHIC FACTOR:</div><div><div>38 C 115 N/A II 0.18 1.0</div><div>WIND PRESSURES: WINDLOAD: 19.22 PSF (POSITIVE) WINDLOAD: 20.82 PSF (NEGATIVE) WINDLOAD: 25.62 PSF (NEGATIVE AT CNR.) DEFLECTION: L/175 FOR L < 13'-6" L/240 + 1/4" FOR L > 13'-6"</div></div></div>		<div>DESIGN LOADS DETERMINED PER: IBC 2012 & ASCE 7-10 (PER SHT. S1.1)</div>				<div>JOB NAME: SCHILLING FARMS OFFICE BUILDING</div> <div>LOCATION: COLLIERVILLE, TENNESSEE</div> <div>ARCHITECT: RENAISSANCE GROUP</div> <div>MANUFACTURER: KAWNEER</div> <div>PRODUCTS: 1600 SYS I, TRIFAB, 500WS DOOR</div> <div>DRAWN FROM: SEE SHEET 002</div> <div>DATED: ---</div>					
		GLAZING SCHEDULE:				FINISH:							
		<div>IG11" LOW-E INSULATED VISION GLASS = SOLAR BAN R-100 ON OPTIBLUE</div>		<div>S31/4" CLEAR TEMPERED GLASS</div>		IVORY (PPG UC105982-3) 3-COAT PAINT							
		<div>IG21" INSULATED SPANDREL GLASS = MATCH OPTIBLUE</div>		<div></div>									
<div>IG31" LOW-E TEMPERED VISION GLASS = SOLAR BAN R-100 ON OPTIBLUE</div>		<div></div>											
SHOP DRAWING ABBREVIATIONS:				LEGEND:									
<div>A.R. = ARCH. REFERENCE C/L = CENTER LINE DLO = DAY LIGHT OPENING D/L = DEADLOAD D.O. = DOOR OPENING D.B. = DOOR SIZE F.H. = FRAME HEIGHT F.W. = FRAME WIDTH I.S. = INFILL SIZE M.H. = MULLION HEIGHT</div> <div>M.L. = MULLION LENGTH O.C. = ON CENTER O.D. = OPENING/OVERALL DIMENSION R.D. = REFERENCE DIMENSION R.L. = RAFTER LENGTH R.O. = ROUGH OPENING S/L = STOCK LENGTH W.D. = WINDOW DIMENSION W/L = WINDLOAD W.P. = WORKING POINT</div>				<div><div><div>ELEVATION REQ'D THUS =</div><div><div>NO.</div><div></div></div></div><div><div>ELEVATION MARK</div><div></div></div><div><div>DETAIL NUMBER SHEET NUMBER</div><div></div></div><div><div>DETAIL NUMBER ARCH. DET. NO. & SHT. NO.</div><div></div></div><div><div>UNIT NUMBER</div><div></div></div><div><div>WINDLOAD OR DEADLOAD REACTIONS</div><div></div></div><div><div>DIMENSIONAL REF. WORKING POINT</div><div></div></div><div><div>PERIMETER SEAL</div><div></div></div><div><div>ERECTOR SEAL</div><div></div></div><div><div>SHOP SEAL</div><div></div></div><div><div>SPLICE</div><div></div></div><div><div>BRAKE SPLICE</div><div></div></div><div><div>HORIZONTAL SPLICE</div><div></div></div><div><div>SHOP DRILL</div><div></div></div><div><div>FIELD DRILL</div><div></div></div><div><div>FIELD ATTACH</div><div></div></div><div><div>SHOP ATTACH</div><div></div></div><div><div>ANCHOR LOCATION</div><div></div></div><div><div>WINDLOAD ANCHOR DEADLOAD ANCHOR</div><div></div></div></div>									
				DRAWN BY: STEVE EBERT / KABE LYONS									

DRAWN BY:
**XK CURTAINWALL
SPECIALISTS**
H: 479-756-1814 FAX: 866-562-4621
SHOPDRAWINGS@XKCURTAINWALL.COM



GLASS COMPANY
123 MAIN STREET

SHEET NO:

003

PHONE: _____

FAX: _____


SCHILLING FARMS - MCR OFFICE BUILDING



DOOR HARDWARE SCHEDULES

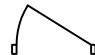
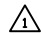
DRAWN BY:

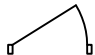

**K CURTAINWALL
SPECIALISTS**

79-756-1814 FAX: 866-562-4621
XKCDRAWINGS@XKCURTAINWALL.COM

DOOR#: 151B		 RIGHT HAND OUTSWING (LHRB)	
ELEV: L/301			
DOOR TYPE: 500WS		SIZE: SEE ELEVATION	
QTY/DPNG		HARDWARE DESCRIPTION	
1	CONTINUOUS HINGE: IVES 112HD EPT (628)		
1	POWER TRANSFER: VON DUPRIN EPT10 (689)		
1	PANIC: VON DUPRIN RX-LC-EL-33A-NL-OP (US26D)		
1	RIM CYLINDER: SCHLAGE 80-159 GRN (626)		
1	OFFSET PULL: IVES 8190 10" O (630)		
1	SURFACE CLOSER: LCN 4111 SCUSH (689)		
1	DRIP CAP: NATIONAL GUARD 16A (CLEAR)		
1	SEALS: NATIONAL GUARD 160S		
1	SWEEP: NATIONAL GUARD 101VA (CLEAR)		
1	THRESHOLD: NATIONAL GUARD 425E (ALUM)		
1	DOOR CONTACT: SCHLAGE ELECTRONICS 679-05HM (BL)		
1	POWER SUPPLY: VON DUPRIN PS914 900-2RS-FA		
-	-		
-	-		

DOOR#: 125 (INTERIOR)		 RIGHT HAND IN SWING	
ELEV: U/305			
DOOR TYPE: WOOD DOOR	SIZE: SEE ELEVATION	QTY: 1	HOW SET:
QTY/ DPNG	HARDWARE DESCRIPTION		
<div style="text-align: center;">  <p>CHANGED TO WOOD DOORS. HARDWARE PROVIDED BY STEWART BROTHERS HARDWARE.</p> </div>			

DOOR#: 214, 241 (INTERIOR)		 RIGHT HAND INSWING	
ELEV: W/305, X/306			
DOOR TYPE: WOOD DOOR	SIZE: SEE ELEVATION	QTY: 2	HDW SET:
QTY/ DPNG	HARDWARE DESCRIPTION		
<div style="border: 1px solid black; border-radius: 50%; padding: 10px; text-align: center; margin: 20px auto; width: 80%;">  <p>CHANGED TO WOOD DOORS. HARDWARE PROVIDED BY STEWART BROTHERS HARDWARE.</p> </div>			

DOOR#: 215, 216 (INTERIOR)		 LEFT HAND INSWING	
ELEV: V/305			
DOOR TYPE: WOOD DOOR	SIZE: SEE ELEVATION	QTY: 1	HDW SET:
QTY/ DPNG	HARDWARE DESCRIPTION		
<div style="border: 1px solid black; border-radius: 50%; padding: 20px; text-align: center; margin: 20px auto; width: 80%;">  <p>CHANGED TO WOOD DOORS. HARDWARE PROVIDED BY STEWART BROTHERS HARDWARE.</p> </div>			

	DESCRIPTION:	REV.#	DATE
-		-	-
-		-	-
-		-	-
-		-	-
-		-	-
-		-	-
1ST APPROVAL PRINTS ISSUED FOR:		-	-

GLASS COMPANY
123 MAIN STREET

SCHILLING FARMS - MCR OFFICE BUILDING

SHEET NO:

004

DOOR HARDWARE SCHEDULES

DRAWN BY:

K CURTAINWALL SPECIALISTS

79-756-1814 FAX: 866-562-4621
XCDRAWINGS@XKCURTAINWALL.COM



[illegible][illegible]

GLASS COMPANY
123 MAIN STREET

SCHILLING FARMS - MCR OFFICE BUILDING

SHEET NO:

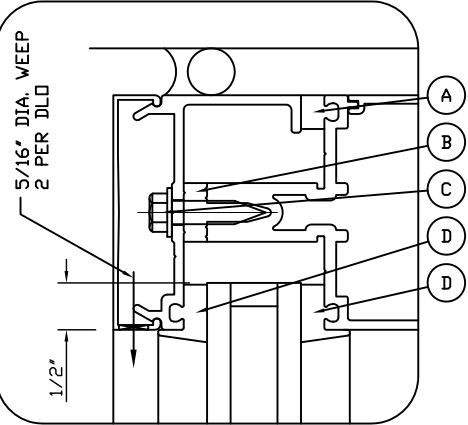
005

DOOR#: 221 (INTERIOR)		
ELEV: Y/306		
DOOR TYPE: WOOD DOOR	SIZE: SEE ELEVATION	QTY: 1
QTY/ DPNG	HARDWARE DESCRIPTION	
<div style="border: 1px solid black; border-radius: 50%; padding: 10px; text-align: center; margin: 20px auto; width: 80%;">  <p>CHANGED TO WOOD DOORS. HARDWARE PROVIDED BY STEWART BROTHERS HARDWARE.</p> </div>		

GLAZING DETAILS

DRAWN BY:
XK CURTAINWALL
SPECIALISTS
PH: 479-756-1814 FAX: 866-562-4621
SHOPDRAWINGS@XKCURTAINWALL.COM

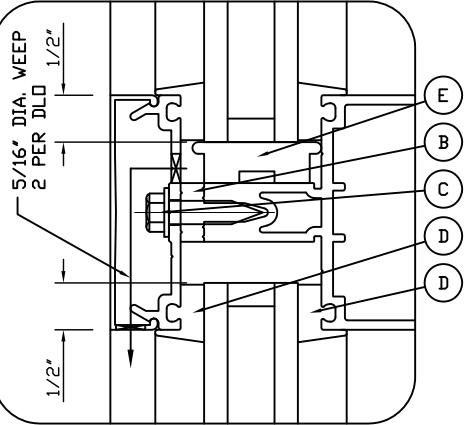
1600 SYSTEM 1 / SYSTEM 2
1" INFILL



INFILL SIZE FORMULA
DLO + 1" UNLESS
OTHERWISE NOTED.

- A 027-857 FIXED GASKET
(SHORE "A" 70±5 DUROMETER EPDM)
B 162-310 THERMAL SEPARATOR
(SHORE "A" 60±5 DUROMETER EPDM)
C 128-406 1/4 x 1" AB HWHTF
D 027-850 FIXED GASKET
(SHORE "A" 60±5 DUROMETER EPDM)

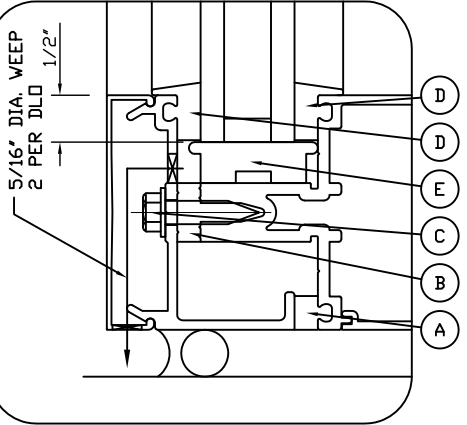
1600 SYSTEM 1 / SYSTEM 2
1" OVER 1"



INFILL SIZE FORMULA
DLO + 1" UNLESS
OTHERWISE NOTED.

- B 162-310 THERMAL SEPARATOR
(SHORE "A" 60±5 DUROMETER EPDM)
C 128-406 1/4 x 1" AB HWHTF
D 027-850 FIXED GASKET
(SHORE "A" 60±5 DUROMETER EPDM)
E 027-853 SETTING BLOCK
(SHORE "A" 85±5 DUROMETER EPDM)

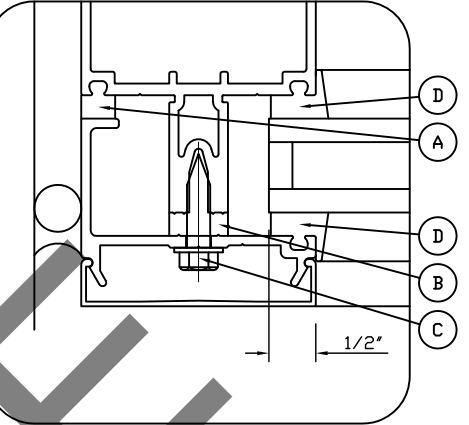
1600 SYSTEM 1 / SYSTEM 2
1" INFILL



INFILL SIZE FORMULA
DLO + 1" UNLESS
OTHERWISE NOTED.

- A 027-857 FIXED GASKET
(SHORE "A" 70±5 DUROMETER EPDM)
B 162-310 THERMAL SEPARATOR
(SHORE "A" 60±5 DUROMETER EPDM)
C 128-406 1/4 x 1" AB HWHTF
D 027-850 FIXED GASKET
(SHORE "A" 60±5 DUROMETER EPDM)
E 027-853 SETTING BLOCK
(SHORE "A" 85±5 DUROMETER EPDM)

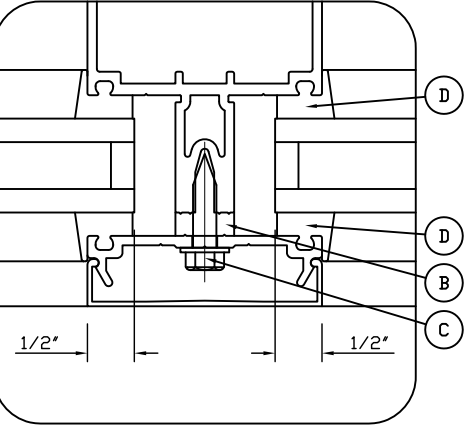
1600 SYSTEM 1 / SYSTEM 2
1" INFILL



INFILL SIZE FORMULA
DLO + 1" UNLESS
OTHERWISE NOTED.

- A 027-857 FIXED GASKET
(SHORE "A" 70±5 DUROMETER EPDM)
B 162-310 THERMAL SEPARATOR
(SHORE "A" 60±5 DUROMETER EPDM)
C 128-406 1/4 x 1" AB HWHTF
D 027-850 FIXED GASKET
(SHORE "A" 60±5 DUROMETER EPDM)

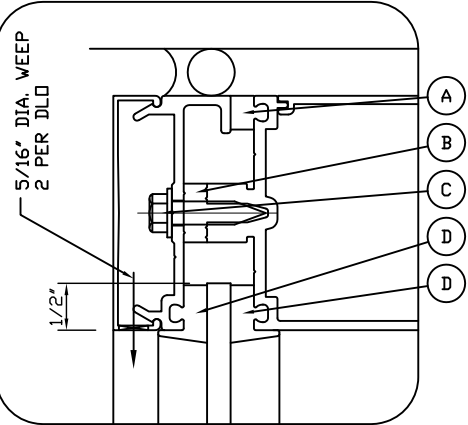
1600 SYSTEM 1 / SYSTEM 2
1"- 1"



INFILL SIZE FORMULA
DLO + 1" UNLESS
OTHERWISE NOTED.

- B 162-310 THERMAL SEPARATOR
(SHORE "A" 60±5 DUROMETER EPDM)
C 128-406 1/4 x 1" AB HWHTF
D 027-850 FIXED GASKET
(SHORE "A" 60±5 DUROMETER EPDM)

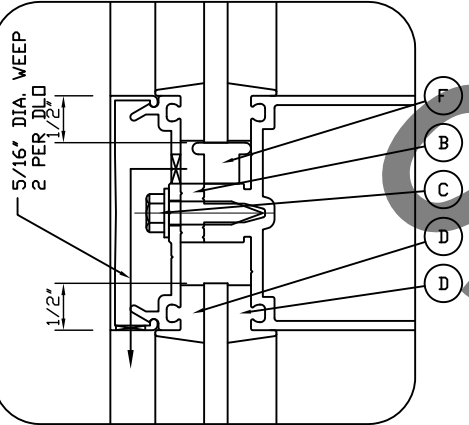
1600 SYSTEM 1 / SYSTEM 2
1/4" INFILL



INFILL SIZE FORMULA
DLO + 1" UNLESS
OTHERWISE NOTED.

- A 027-857 FIXED GASKET
(SHORE "A" 70±5 DUROMETER EPDM)
B 162-310 THERMAL SEPARATOR
(SHORE "A" 60±5 DUROMETER EPDM)
C 128-406 1/4 x 1" AB HWHTF
D 027-850 FIXED GASKET
(SHORE "A" 60±5 DUROMETER EPDM)

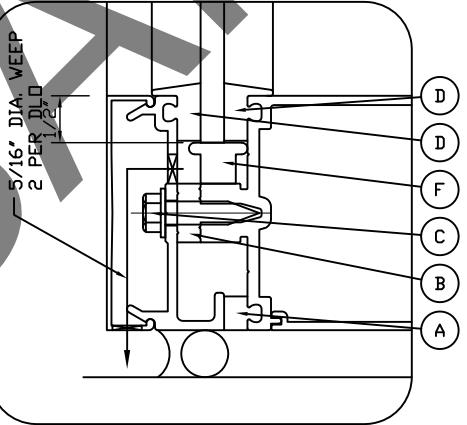
1600 SYSTEM 1 / SYSTEM 2
1/4" OVER 1/4"



INFILL SIZE FORMULA
DLO + 1" UNLESS
OTHERWISE NOTED.

- B 162-310 THERMAL SEPARATOR
(SHORE "A" 60±5 DUROMETER EPDM)
C 128-406 1/4 x 1" AB HWHTF
D 027-850 FIXED GASKET
(SHORE "A" 60±5 DUROMETER EPDM)
F 027-854 SETTING BLOCK
(SHORE "A" 85±5 DUROMETER EPDM)

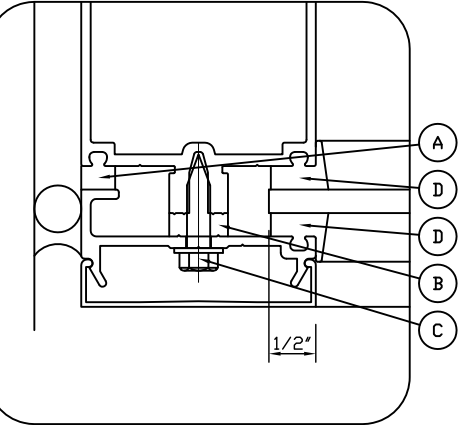
1600 SYSTEM 1 / SYSTEM 2
1/4" INFILL



INFILL SIZE FORMULA
DLO + 1" UNLESS
OTHERWISE NOTED.

- A 027-857 FIXED GASKET
(SHORE "A" 70±5 DUROMETER EPDM)
B 162-310 THERMAL SEPARATOR
(SHORE "A" 60±5 DUROMETER EPDM)
C 128-406 1/4 x 1" AB HWHTF
D 027-850 FIXED GASKET
(SHORE "A" 60±5 DUROMETER EPDM)
F 027-854 SETTING BLOCK
(SHORE "A" 85±5 DUROMETER EPDM)

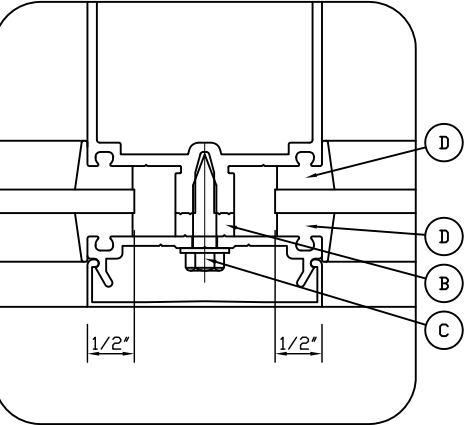
1600 SYSTEM 1 / SYSTEM 2
1/4" INFILL



INFILL SIZE FORMULA
DLO + 1" UNLESS
OTHERWISE NOTED.

- A 027-857 FIXED GASKET
(SHORE "A" 70±5 DUROMETER EPDM)
B 162-310 THERMAL SEPARATOR
(SHORE "A" 60±5 DUROMETER EPDM)
C 128-406 1/4 x 1" AB HWHTF
D 027-850 FIXED GASKET
(SHORE "A" 60±5 DUROMETER EPDM)

1600 SYSTEM 1 / SYSTEM 2
1/4"- 1/4"



INFILL SIZE FORMULA
DLO + 1" UNLESS
OTHERWISE NOTED.

- B 162-310 THERMAL SEPARATOR
(SHORE "A" 60±5 DUROMETER EPDM)
C 128-406 1/4 x 1" AB HWHTF
D 027-850 FIXED GASKET
(SHORE "A" 60±5 DUROMETER EPDM)

GLASS COMPANY
123 MAIN STREET

SHEET NO:

006

PHONE: FAX:

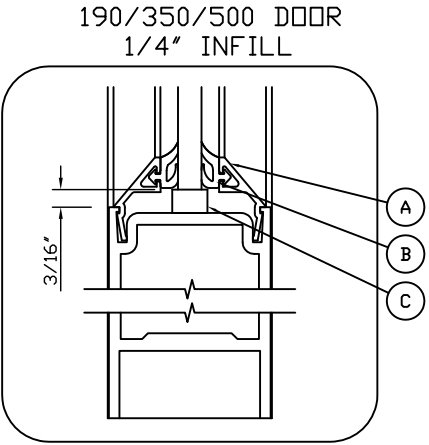
SCHILLING FARMS - MCR OFFICE BUILDING

DESCRIPTION:
1ST APPROVAL
PRINTS ISSUED FOR:

DATE
REV.#

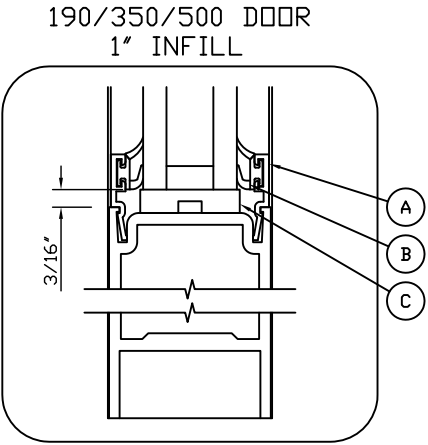
GLAZING DETAILS

DRAWN BY:
XK CURTAINWALL
SPECIALISTS
PH: 479-756-1814 FAX: 866-562-4621
SHOPDRAWINGS@XKCURTAINWALL.COM



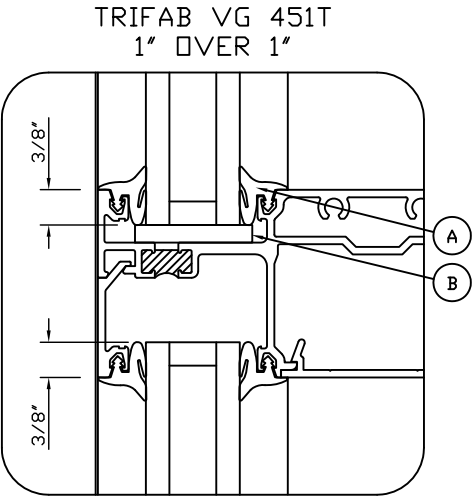
INFILL SIZE FORMULA
DLO - 3/8" UNLESS
OTHERWISE NOTED.

- A 200-041 GLASS STOP
B 27-563 WEATHERING (SHORE "A" 70±5
DUROMETER EPDM)
C 27-555 SETTING BLOCK (SHORE "A" 85±5
DUROMETER EPDM)



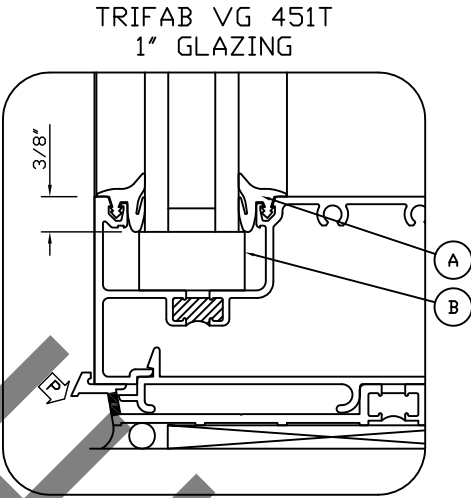
INFILL SIZE FORMULA
DLO - 3/8" UNLESS
OTHERWISE NOTED.

- A 200-045 GLASS STOP
B 27-557 GASKET, DUAL DUROMETER (SHORE "A"
64±5 DUROMETER SANTOPRENE,
SHORE "D" 68 DUROMETER
POLYPROPYLENE)
C 27-339 SETTING BLOCK (SHORE "A" 85±5
DUROMETER EPDM)



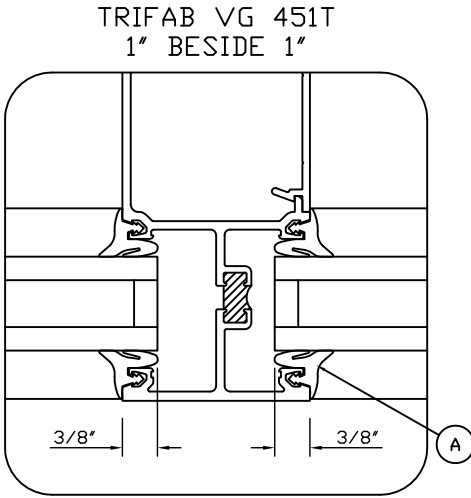
INFILL SIZE FORMULA
DLO + 3/4" UNLESS
OTHERWISE NOTED

- A 27-074 STD. PUSH ON GASKET
(SHORE "A" 70±5 DUROMETER EPDM)
B 27-081 SETTING BLOCK
(SHORE "A" 85±5 DUROMETER EPDM BLACK)



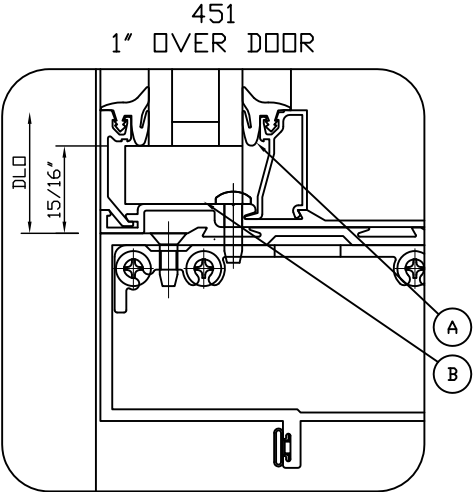
INFILL SIZE FORMULA
DLO + 3/4" UNLESS
OTHERWISE NOTED

- A 27-074 STD. PUSH ON GASKET
(SHORE "A" 70±5 DUROMETER EPDM)
B 27-073 SETTING BLOCK
(SHORE "A" 85±5 DUROMETER EPDM BLACK)



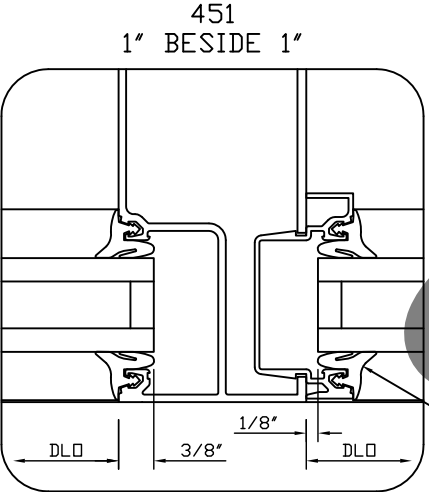
INFILL SIZE FORMULA
DLO + 3/4" UNLESS
OTHERWISE NOTED

- A 27-074 STD. PUSH ON GASKET
(SHORE "A" 70±5 DUROMETER EPDM)



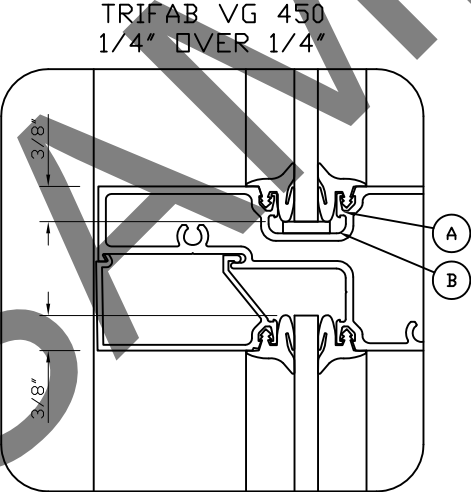
INFILL SIZE FORMULA
FOR THIS DETAIL
DLO - 9/16"

- A 27-074 STD. PUSH ON GASKET
(SHORE "A" 70±5 DUROMETER EPDM)
B 27-073 SETTING BLOCK



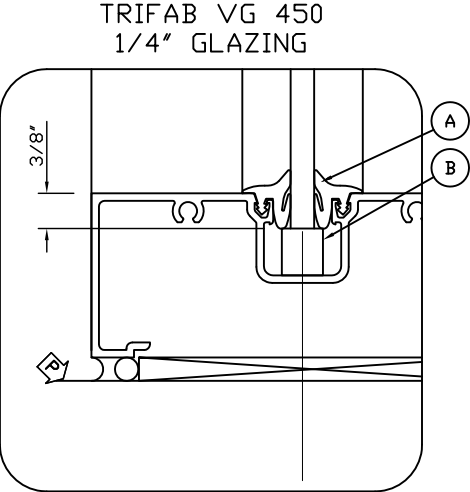
INFILL SIZE FORMULA
DLO - 1/4" IN
TRANSOM AREA

- A 27-074 STD. PUSH ON GASKET
(SHORE "A" 70±5 DUROMETER EPDM)



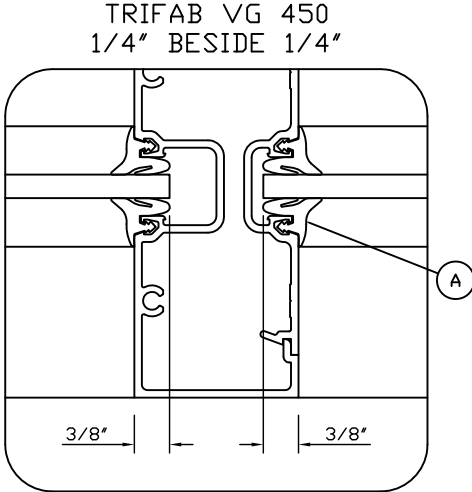
INFILL SIZE FORMULA
DLO + 3/4" UNLESS
OTHERWISE NOTED

- A 27-074 STD. PUSH ON GASKET
(SHORE "A" 70±5 DUROMETER EPDM)
B 27-302 SETTING BLOCK
(SHORE "A" 85±5 DUROMETER EPDM BLACK)



INFILL SIZE FORMULA
DLO + 3/4" UNLESS
OTHERWISE NOTED

- A 27-074 STD. PUSH ON GASKET
(SHORE "A" 70±5 DUROMETER EPDM)
B 27-366 SETTING BLOCK
(SHORE "A" 85±5 DUROMETER EPDM BLACK)



INFILL SIZE FORMULA
DLO + 3/4" UNLESS
OTHERWISE NOTED

- A 27-074 STD. PUSH ON GASKET
(SHORE "A" 70±5 DUROMETER EPDM)

GLASS COMPANY
123 MAIN STREET

SHEET NO:

007

PHONE:

FAX:

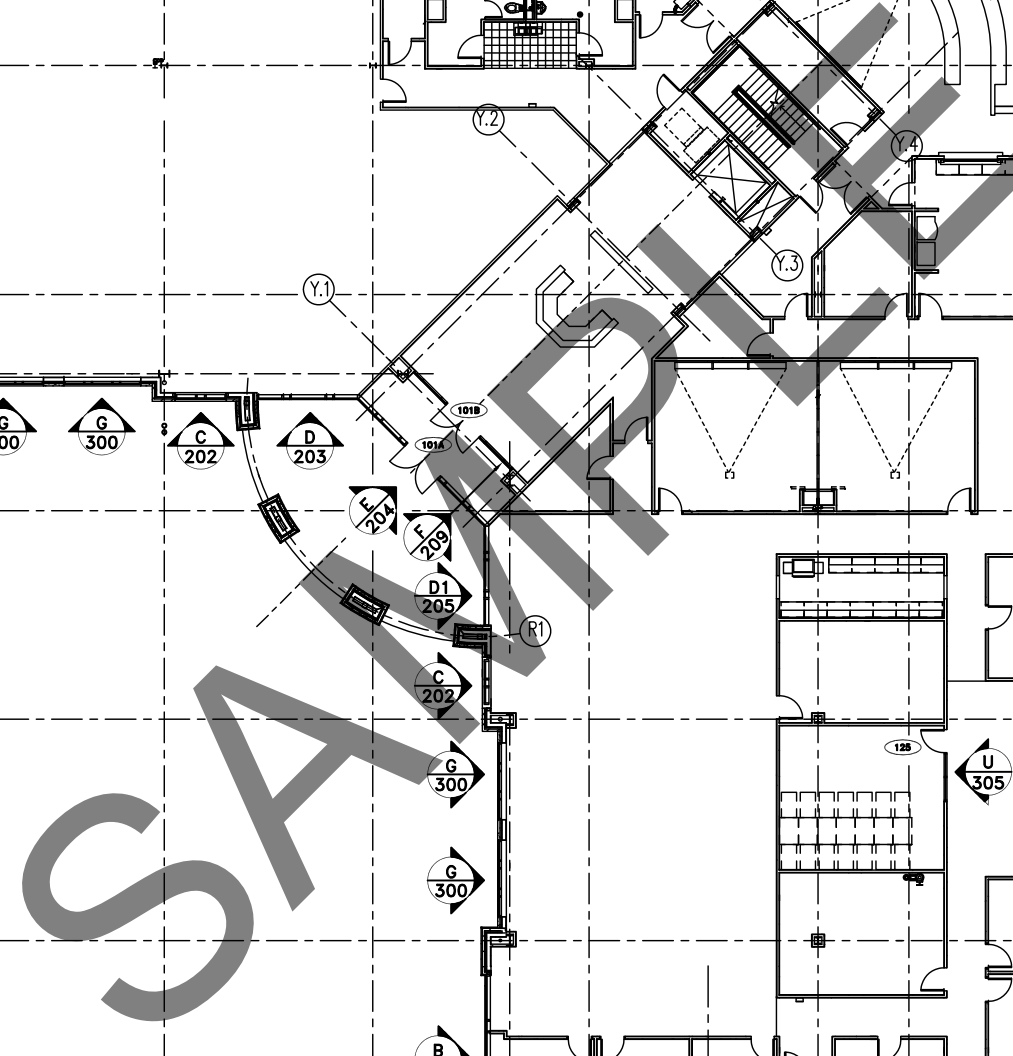
SCHILLING FARMS - MCR OFFICE BUILDING

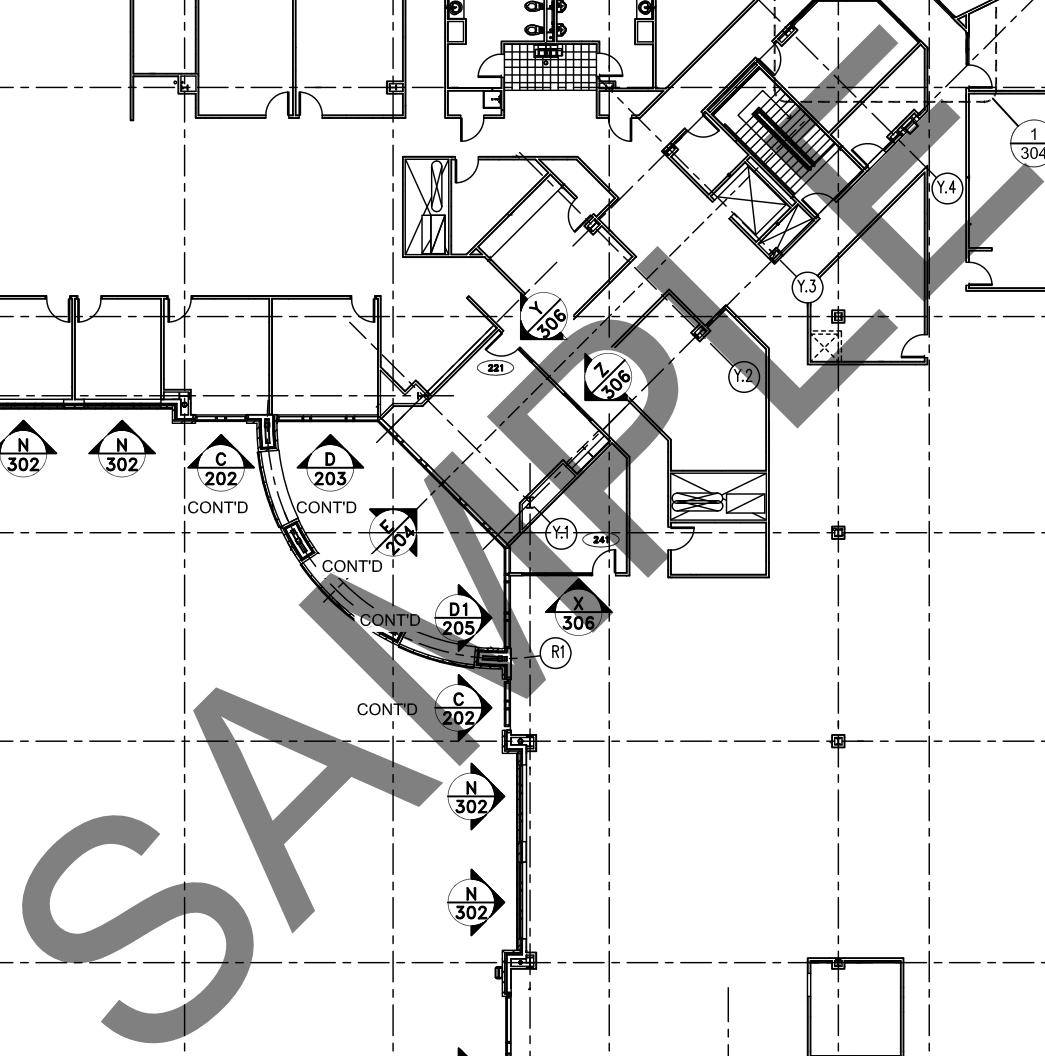
DESCRIPTION:

1ST APPROVAL
PRINTS ISSUED FOR:

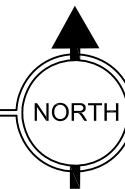
REV.#

DATE

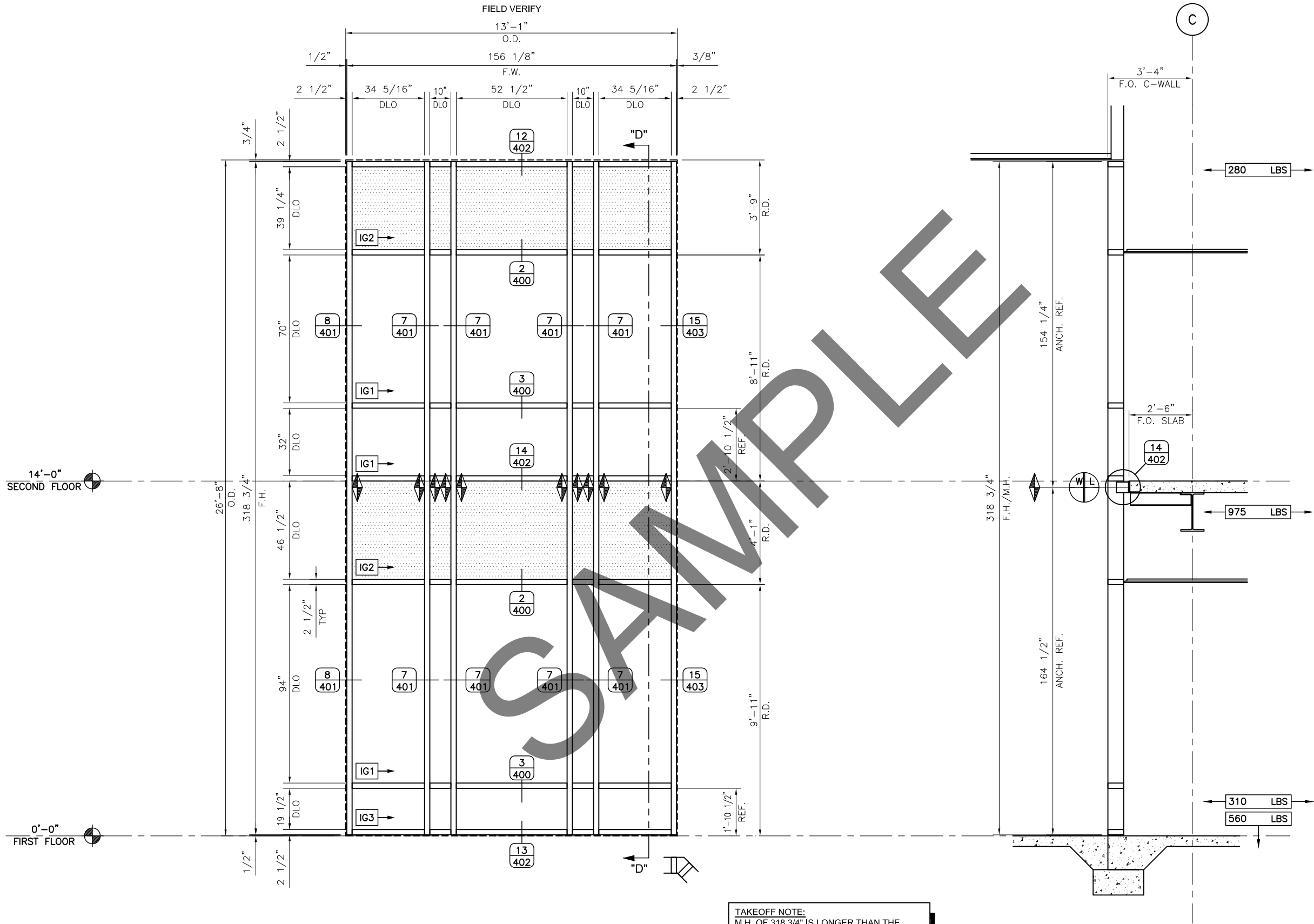




(NOT TO ANY SCALE)







D

PRODUCT: KAWNEER 1600 SYSTEM I
7 1/2" DEPTH
REQ'D THUS = 1
ARCH. REF.: 4/A7.1

TAKEOFF NOTE:
M.H. OF 318 3/4" IS LONGER THAN THE
STANDARD EXTRUSION LENGTH OF 24'-0".
THIS IS REQUIRED IN ORDER TO AVOID
HAVING TO SPLICE THE MULLION.

WALL SECTION "D-D"
ARCH. REF: 2/A4.5 (SIM)

DRAWN BY: XK CURTAINWALL SPECIALISTS PH: 479-756-1814 FAX: 866-562-4621 SHOPDRAWINGS@XKCURTAINWALL.COM						
-	-	-	-	-	DATE	
-	-	-	-	-	REV.#	
-	-	-	-	-	DESCRIPTION: 1ST APPROVAL PRINTS ISSUED FOR:	
-	-	-	-	-		
-	-	-	-	-		
-	-	-	-	-		
-	-	-	-	-		
GLASS COMPANY 123 MAIN STREET						
PHONE: FAX:						
SHEET NO:						
203						

[illegible]

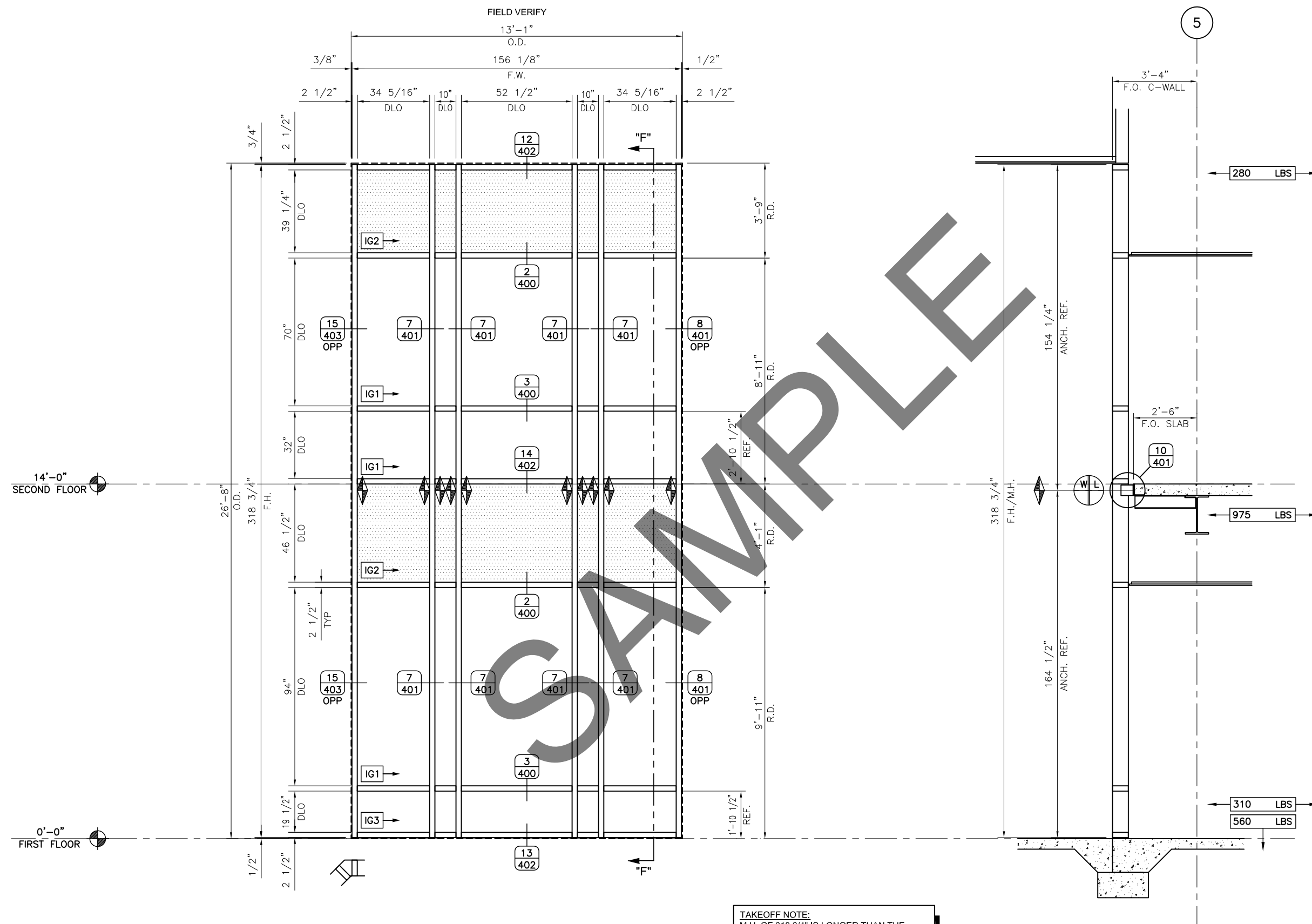
GLASS COMPANY
123 MAIN STREET

PHONE: _____ FAX: _____

SCHILLING FARMS - MCB OFFICE BUILDING

SHEET NO: _____

205

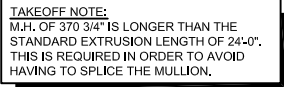


TAKEOFF NOTE:
M.H. OF 318 3/4" IS LONGER THAN THE
STANDARD EXTRUSION LENGTH OF 24'-0".
THIS IS REQUIRED IN ORDER TO AVOID
HAVING TO SPLICE THE MULLION.

WALL SECTION "F-F"
ARCH. REF: 2/A4.5 (SIM)

D1 PRODUCT: KAWNEER 1600 SYSTEM I
7 1/2" DEPTH
REQ'D THUS = 1
ARCH. REF.: 4/A7.1



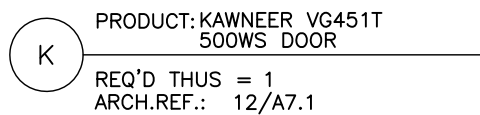
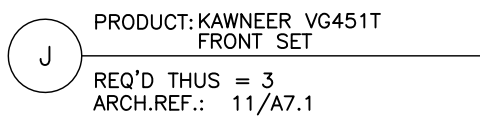
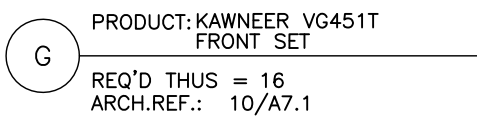


GLASS COMPANY
123 MAIN STREET

208

PHONE: _____ FAX: _____

SCHILLING FARMS - MCR OFFICE BUILDING



1	
2	
3	
4	
5	
6	
7	
8	
9	
10	
11	
12	
13	
14	
15	
16	
17	
18	
19	
20	
21	
22	
23	
24	
25	
26	
27	
28	
29	
30	
31	
32	
33	
34	
35	
36	
37	
38	
39	
40	
41	
42	
43	
44	
45	
46	
47	
48	
49	
50	
51	
52	
53	
54	
55	
56	
57	
58	
59	
60	
61	
62	
63	
64	
65	
66	
67	
68	
69	
70	
71	
72	
73	
74	
75	
76	
77	
78	
79	
80	
81	
82	
83	
84	
85	
86	
87	
88	
89	
90	
91	
92	
93	
94	
95	
96	
97	
98	
99	
100	

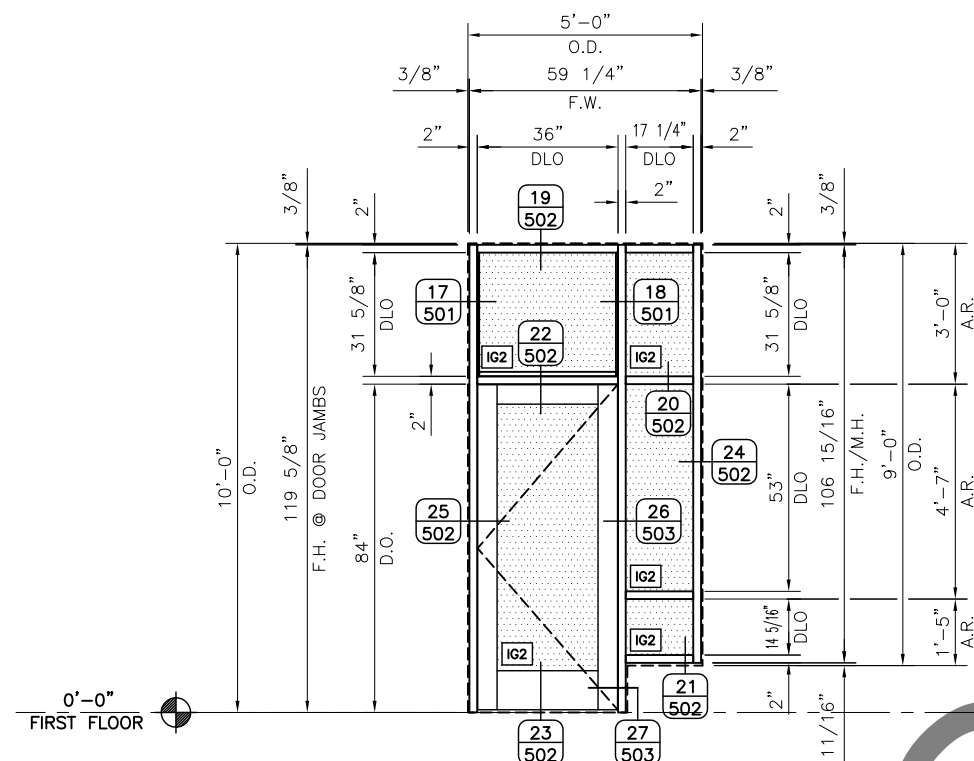
GLASS COMPANY
123 MAIN STREET

PHONE: _____

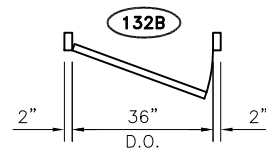
FAX: _____

SCILLING FARMS - MCR OFFICE BUILDING

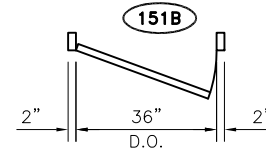
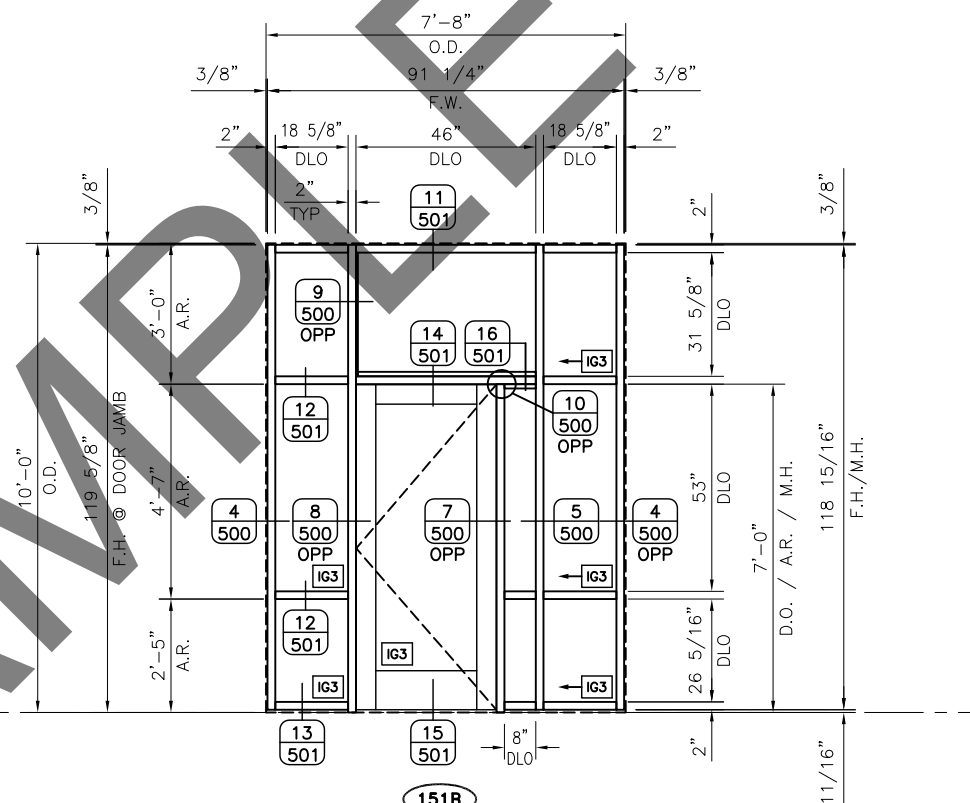
SHEET NO:
300



NOTE:
SPANDREL GLASS AT THIS
ELEVATION TO BE TEMPERED.

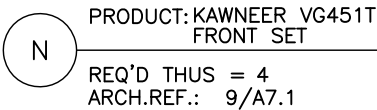


K.1 PRODUCT: KAWNEER VG451T
500WS DOOR
REQ'D THUS = 1
ARCH. REF.: 26/A7.1



PRODUCT: KAWNEER VG451T
500WS DOOR

REQ'D THUS = 1
ARCH. REF.: 15/A7.1



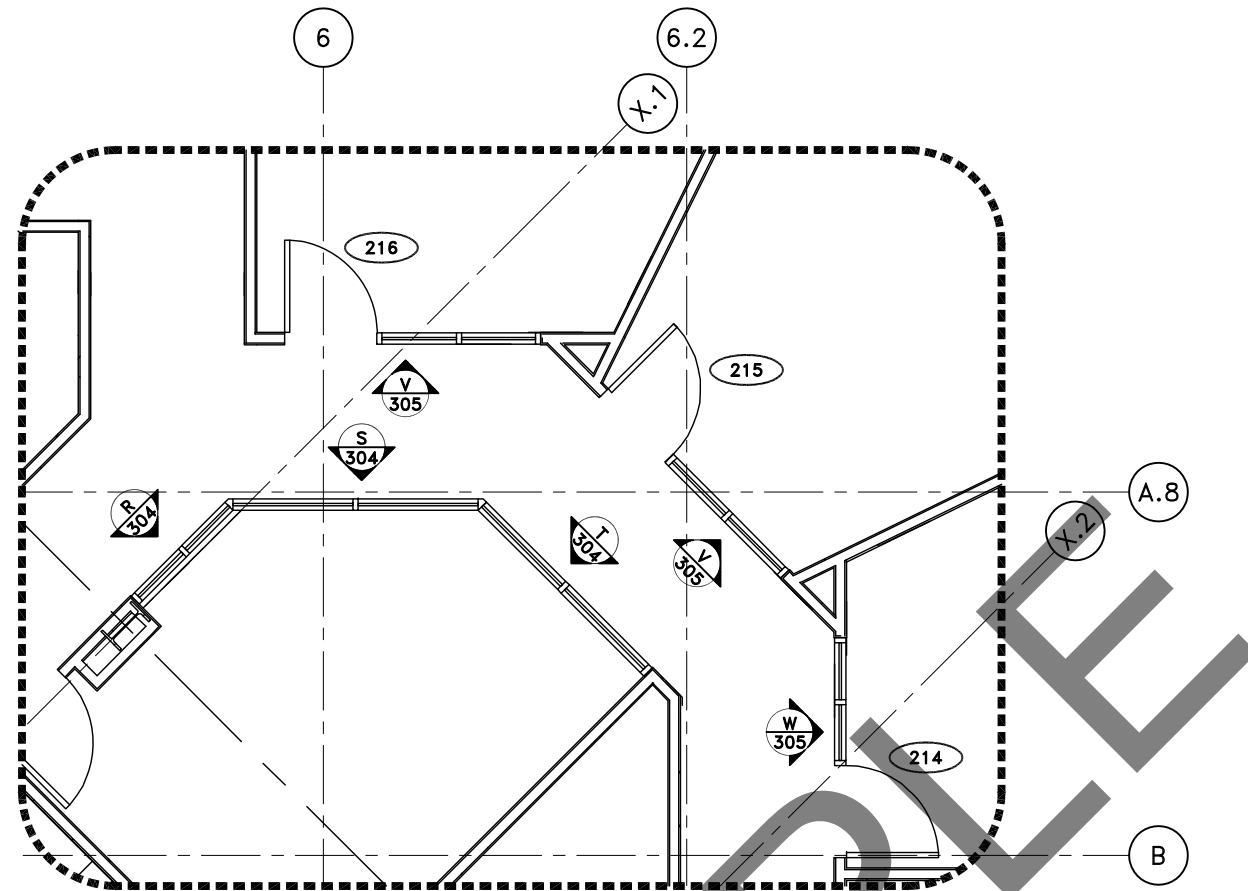
DATE	REV.#	DESCRIPTION:	PRINTS ISSUED FOR:
			1ST APPROVAL
			PRINTS ISSUED FOR:

GLASS COMPANY
123 MAIN STREET

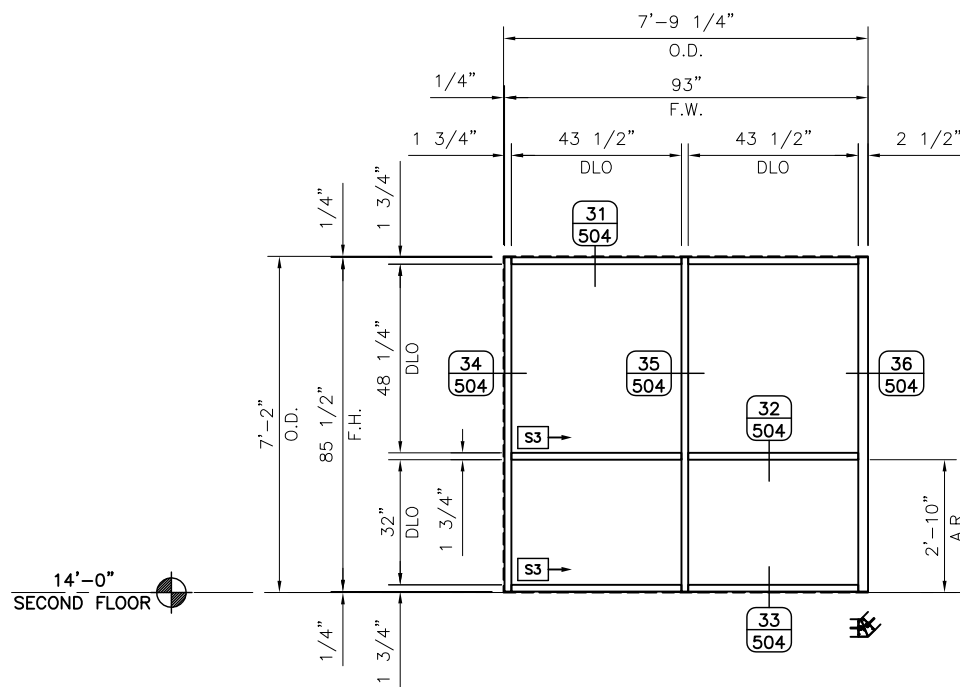
PHONE: FAX:

SHEET NO:
304

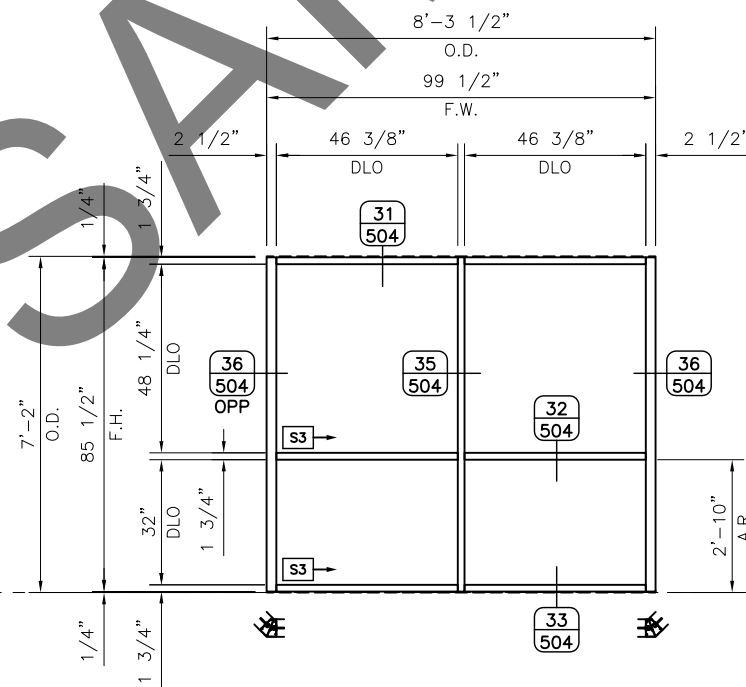
SCHILLING FARMS - MCR OFFICE BUILDING



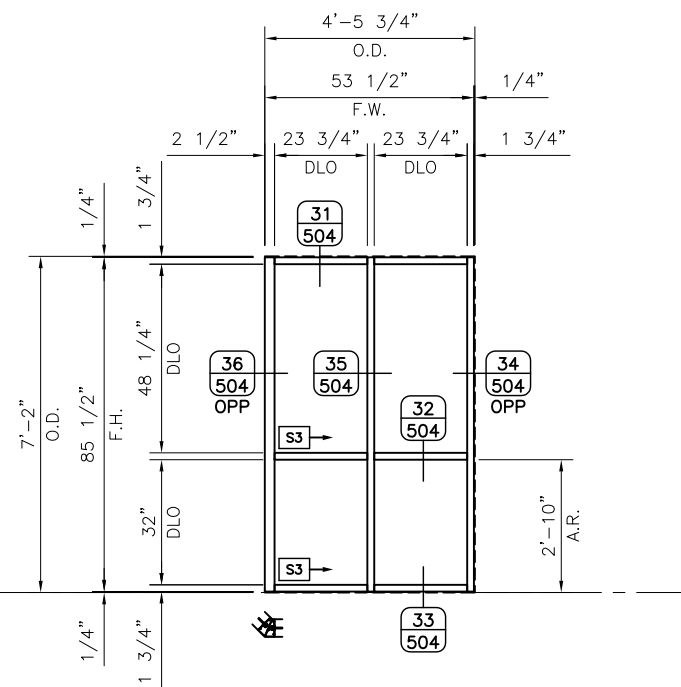
1 2ND FLOOR INTERIOR LAYOUT
REF: 1/A2.2



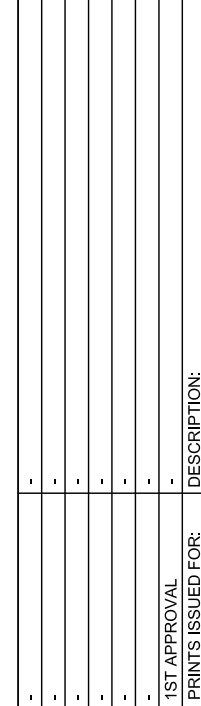
(INTERIOR) T PRODUCT: KAWNEER VG450
CENTER SET
REQ'D THUS = 1
ARCH.REF.: 18/A7.1



(INTERIOR) S PRODUCT: KAWNEER VG450
CENTER SET
REQ'D THUS = 1
ARCH.REF.: 17/A7.1

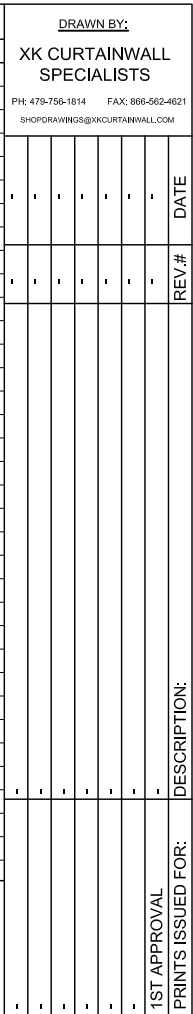
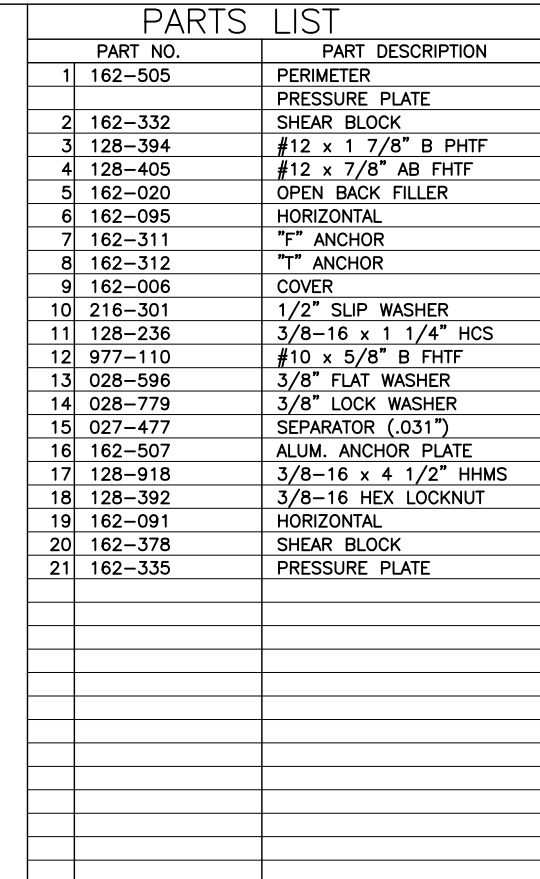


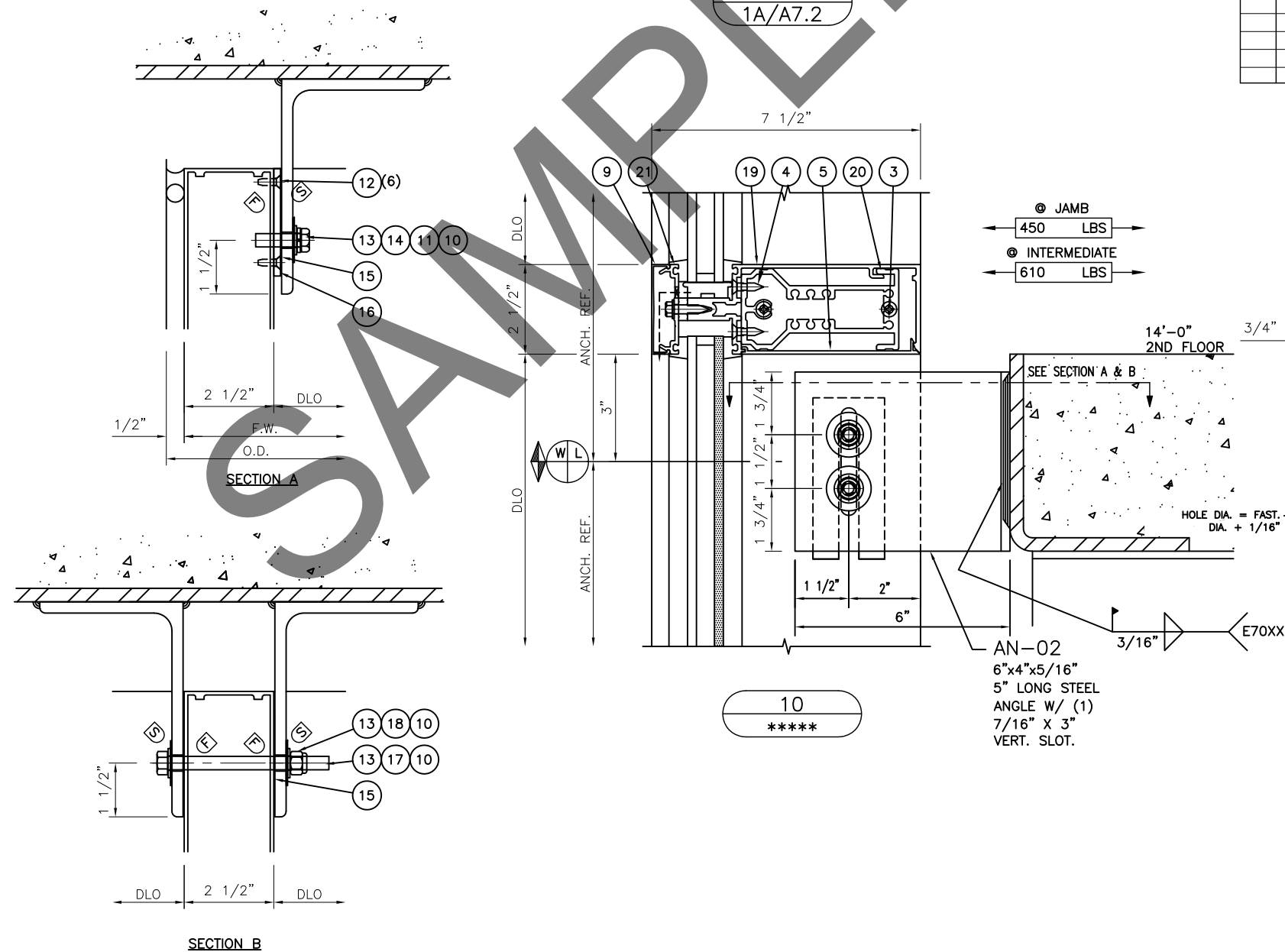
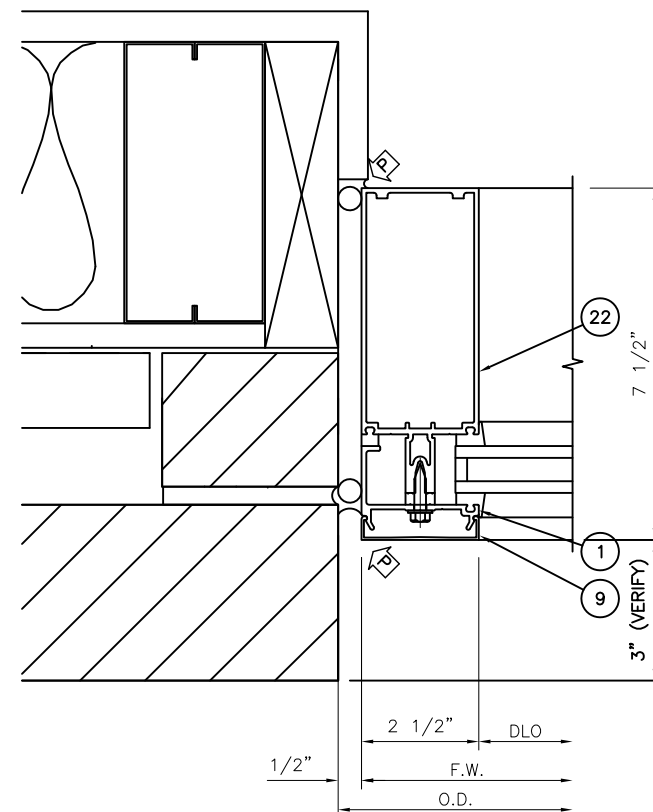
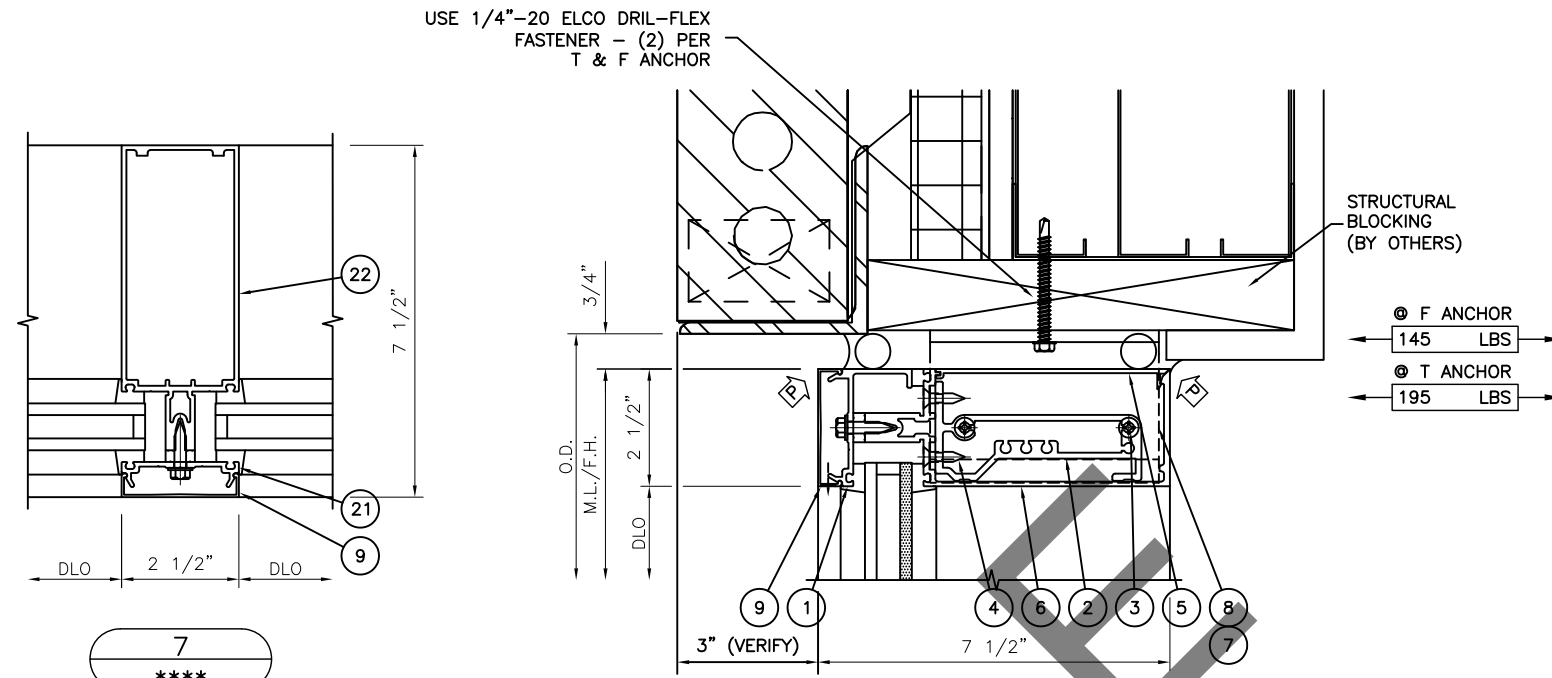
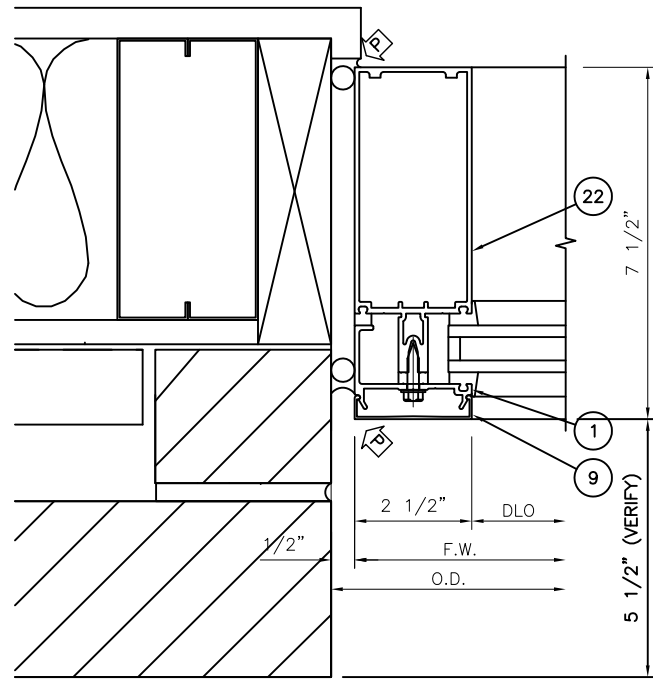
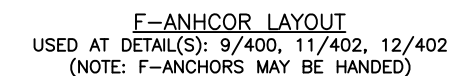
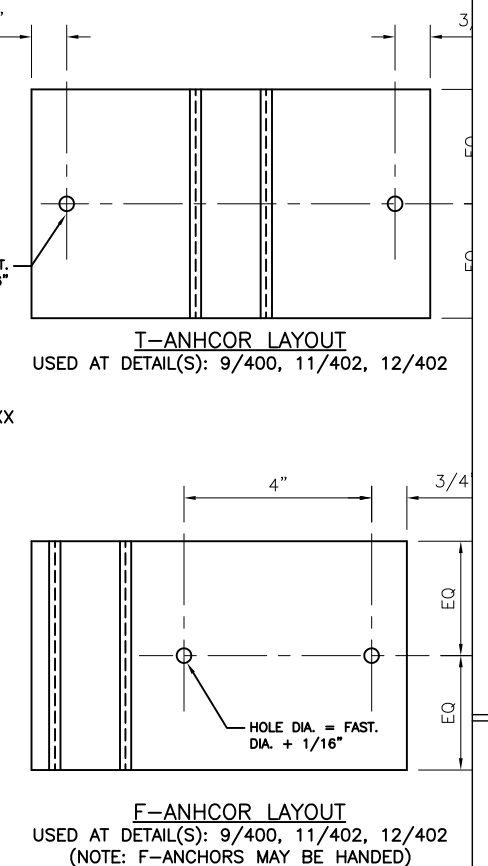
(INTERIOR) R PRODUCT: KAWNEER VG450
CENTER SET
REQ'D THUS = 1
ARCH.REF.: 16/A7.1



SHEET NO:

306



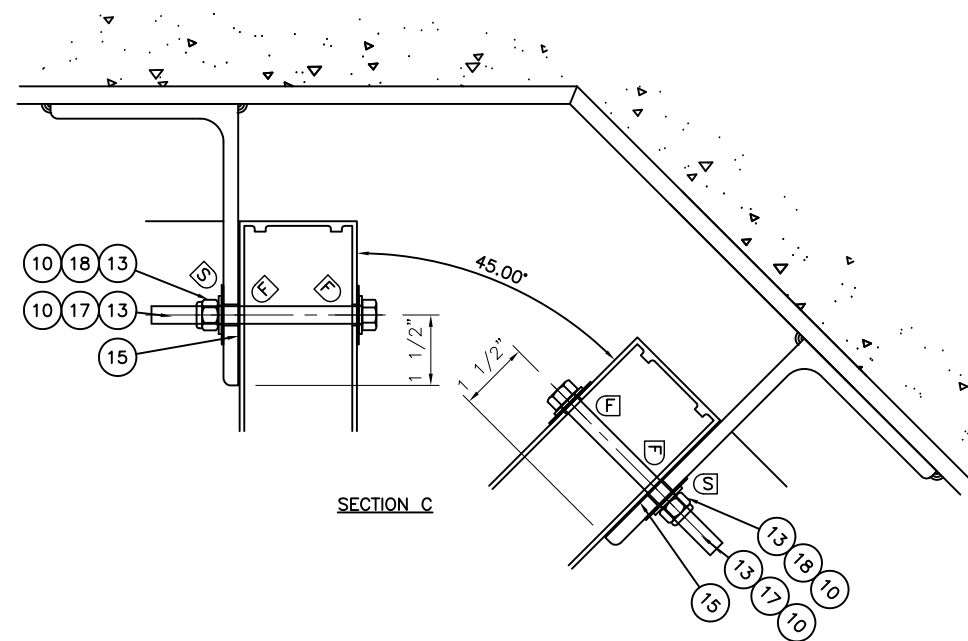
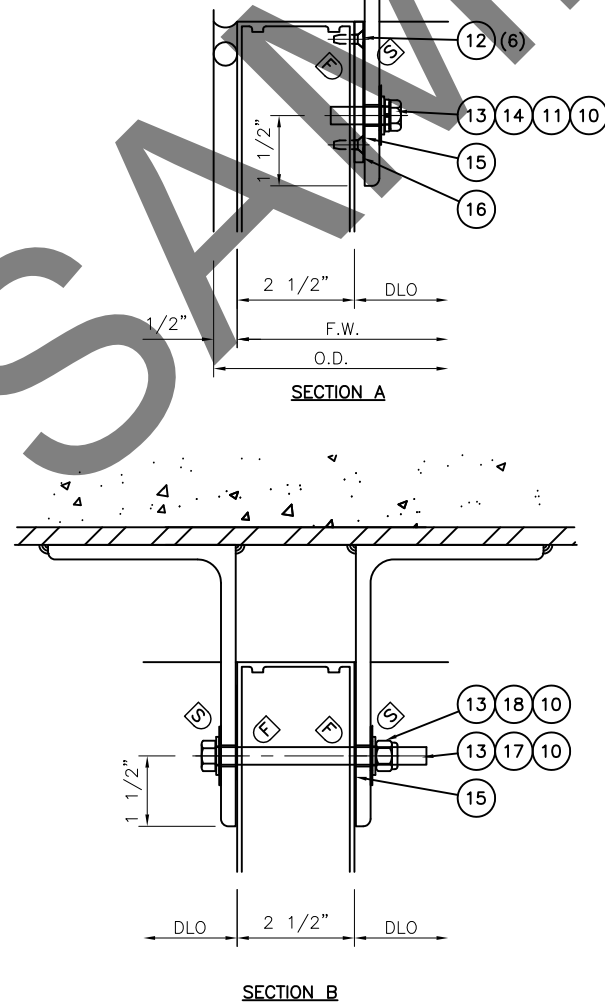
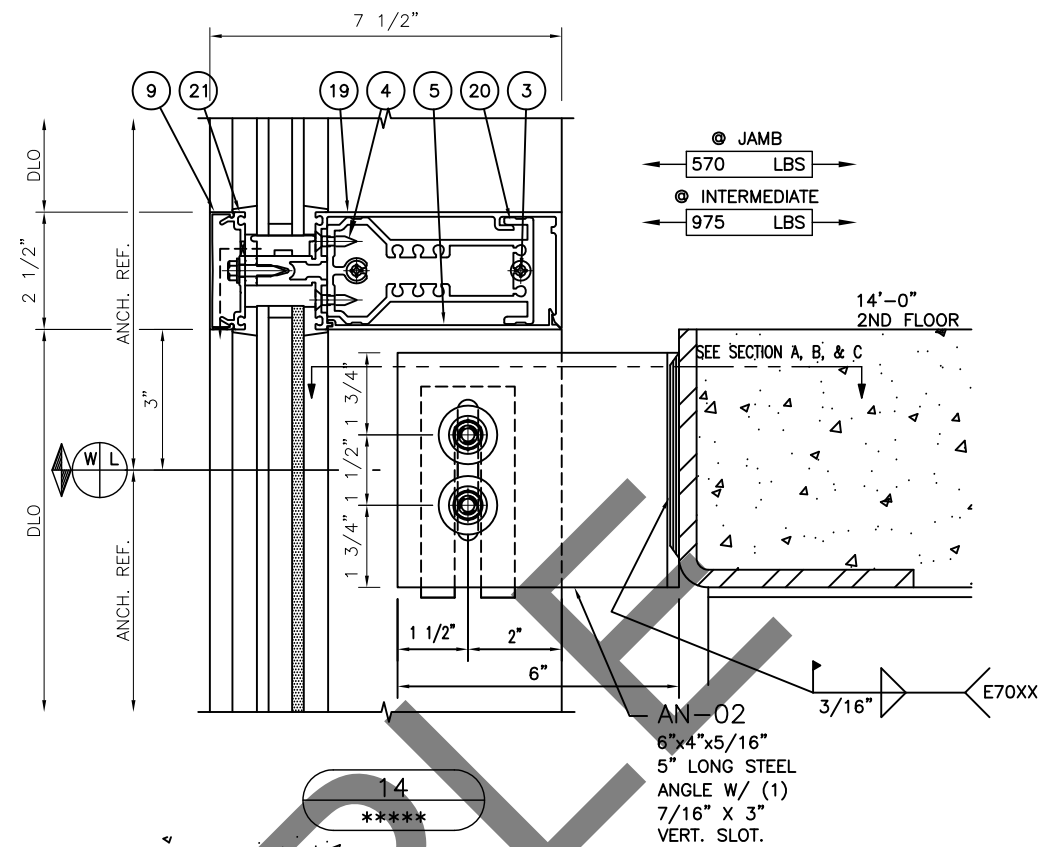
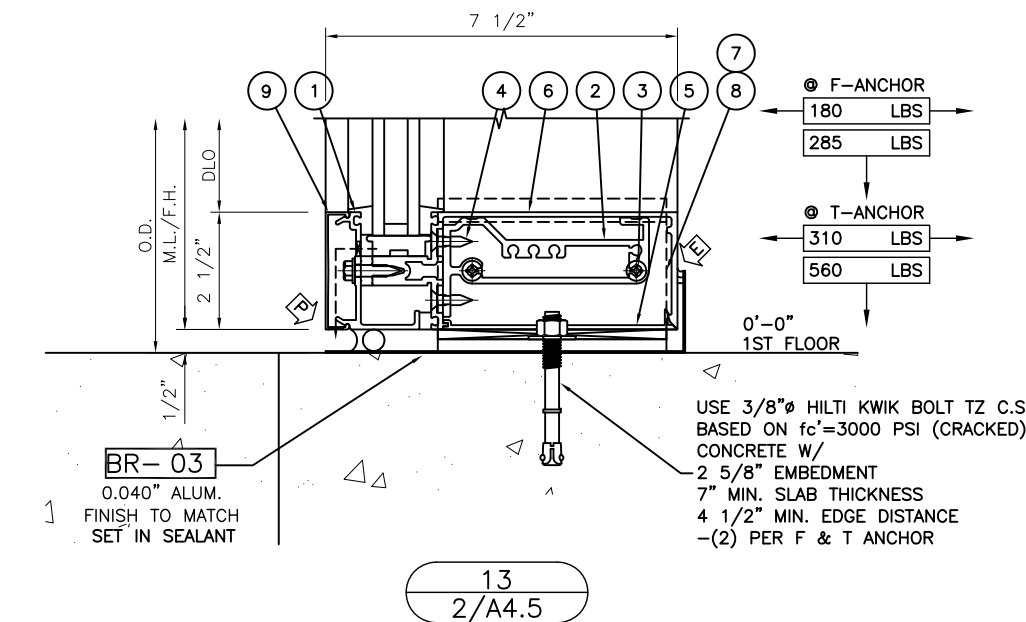
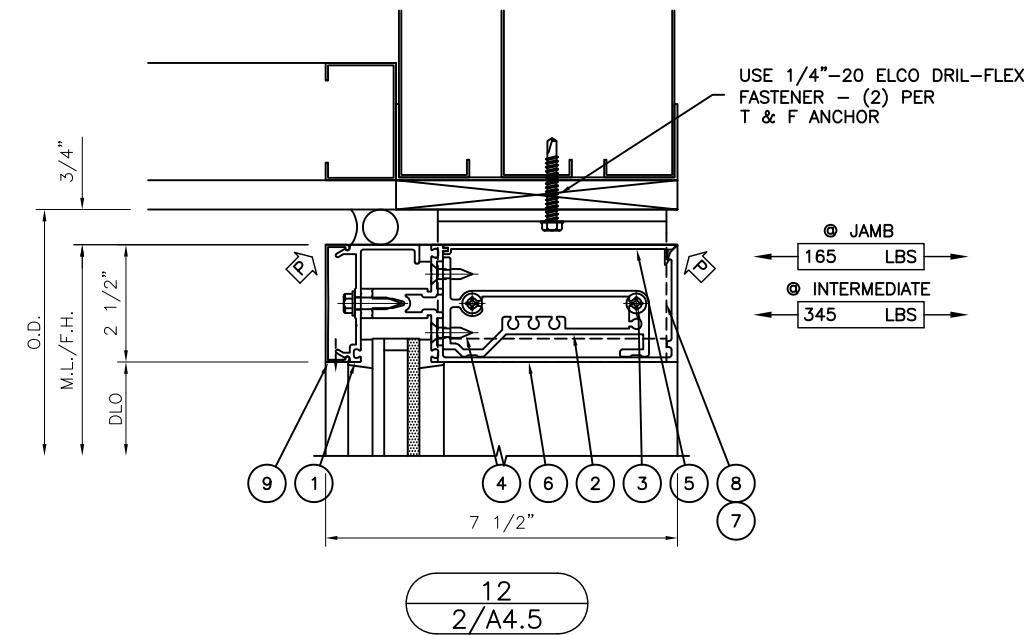
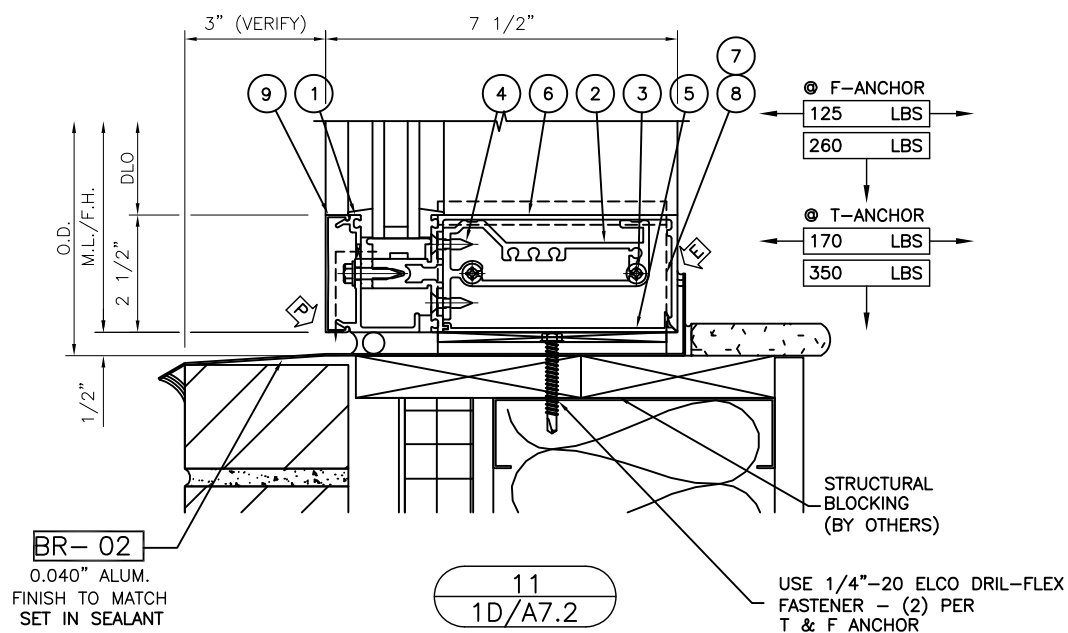
[illegible]

GLASS COMPANY
123 MAIN STREET

SHEET NO:

401

SCHILLING FARMS - MCR OFFICE BUILDING

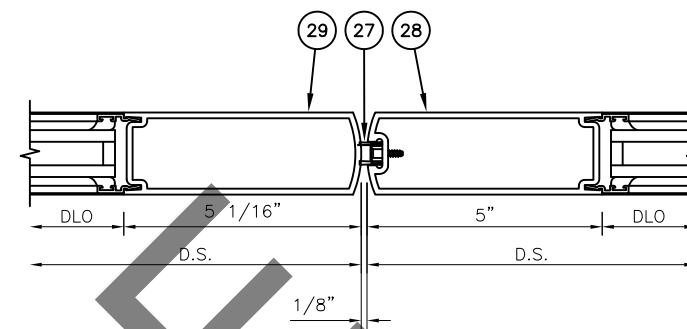
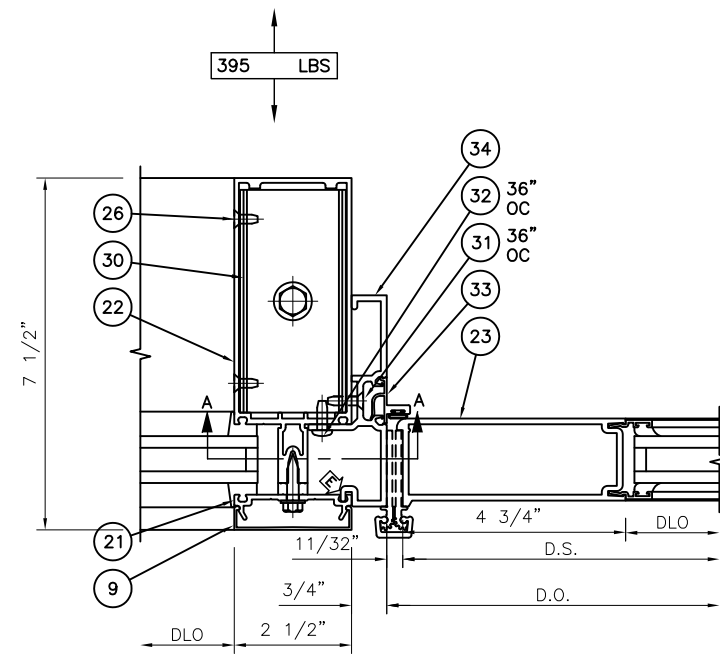
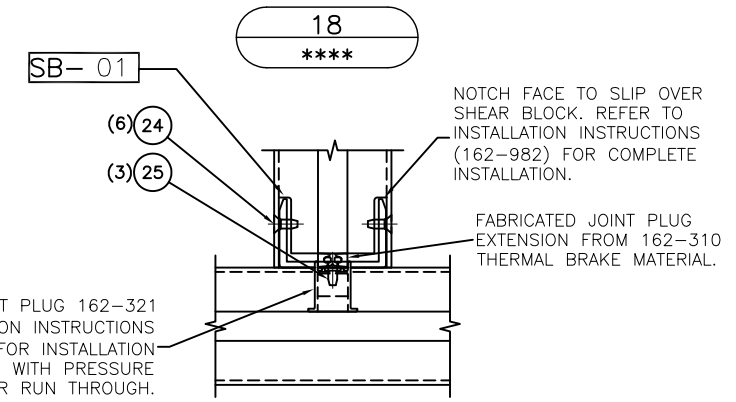
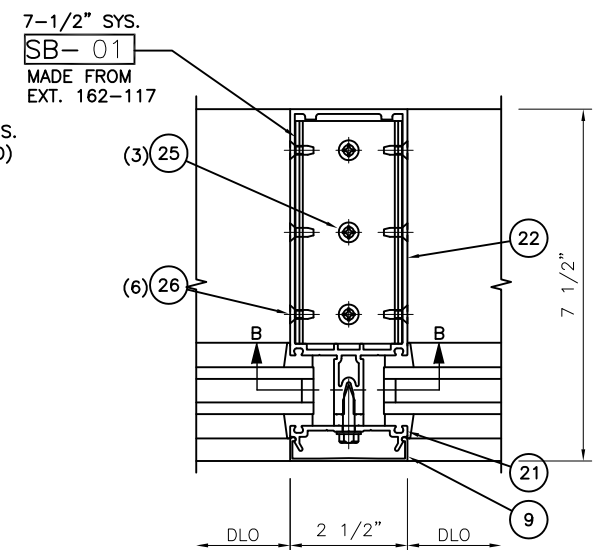
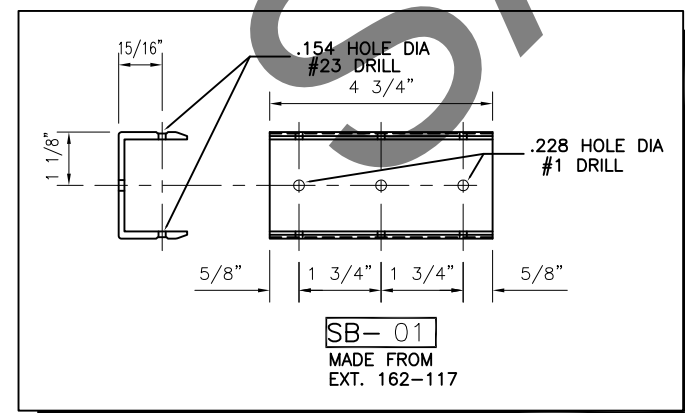
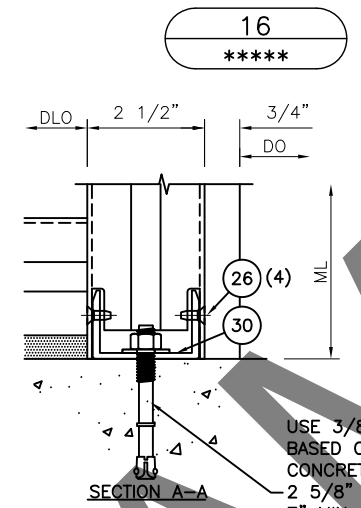
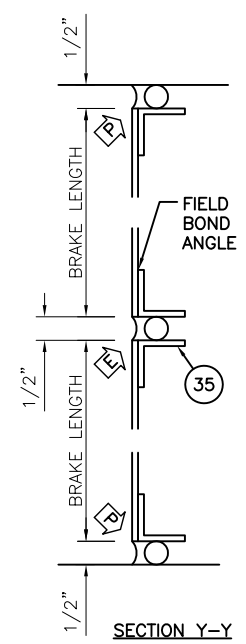


PARTS LIST			DRAWN BY:	
PART NO.	PART DESCRIPTION		XK CURTAINWALL SPECIALISTS	
1	162-505	PERIMETER	PH: 478-756-1814	FAX: 866-562-4621
2	162-332	PRESSURE PLATE	SHOPDRAWINGS@XKCURTAINWALL.COM	
3	128-394	SHEAR BLOCK		
4	128-405	#12 x 1 7/8" B PHTF		
5	162-020	#12 x 7/8" AB FHTF		
6	162-095	OPEN BACK FILLER		
7	162-311	HORIZONTAL		
8	162-312	"F" ANCHOR		
9	162-006	"T" ANCHOR		
10	216-301	COVER		
11	216-301	1/2" SLIP WASHER		
12	128-236	3/8-16 x 1 1/4" HCS		
13	977-110	#10 x 5/8" B FHTF		
14	028-596	3/8" FLAT WASHER		
15	028-779	3/8" LOCK WASHER		
16	027-477	SEPARATOR (.031")		
17	162-507	ALUM. ANCHOR PLATE		
18	128-918	3/8-16 x 4 1/2" HHMS		
19	128-392	3/8-16 HEX LOCKNUT		
20	162-091	HORIZONTAL		
21	162-378	SHEAR BLOCK		
22	162-335	PRESSURE PLATE		

GLASS COMPANY
123 MAIN STREET

SHEET NO:
402

SCHILLING FARMS - MCR OFFICE BUILDING

[illegible][illegible]

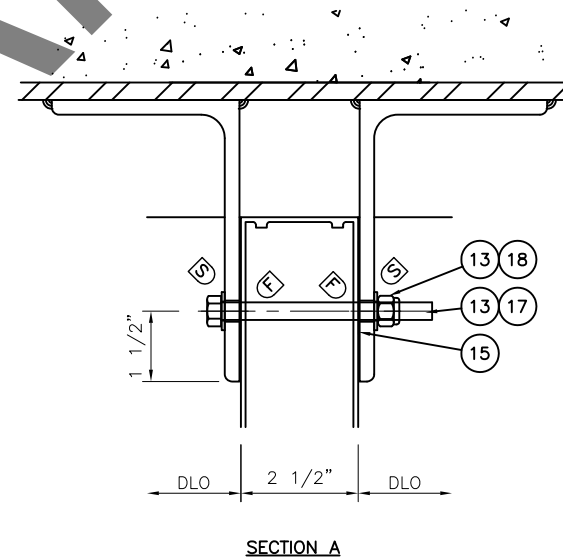
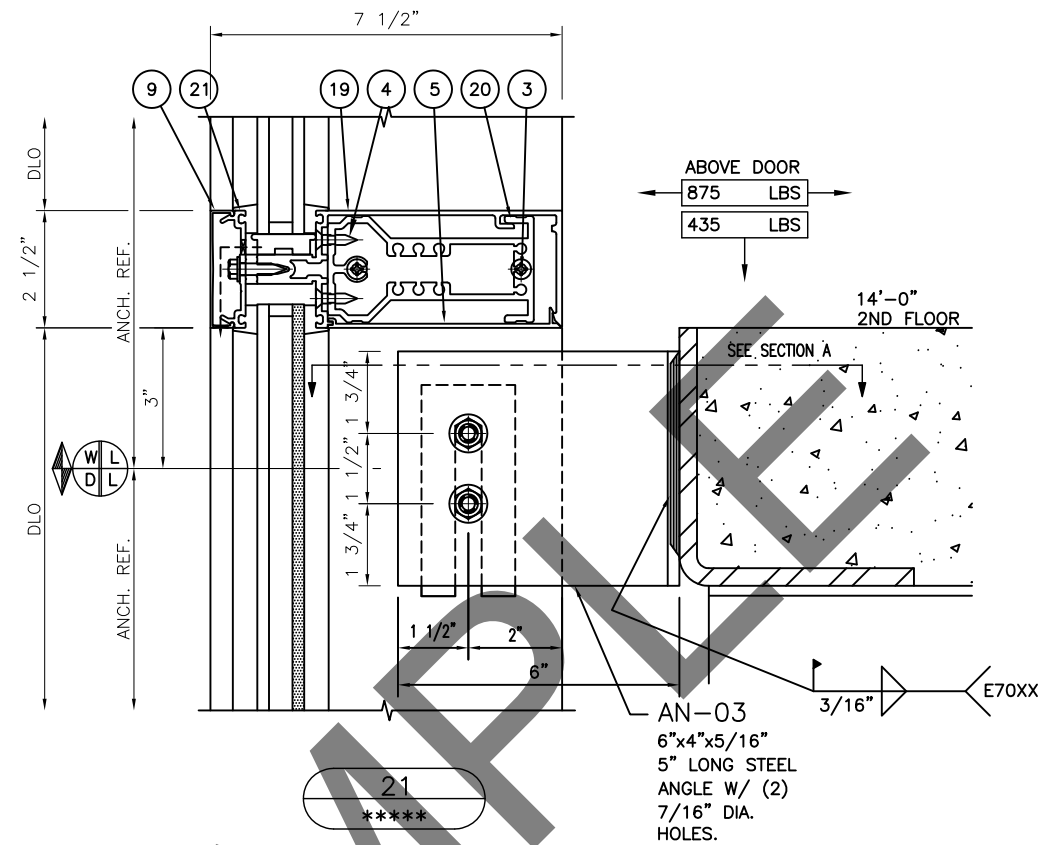
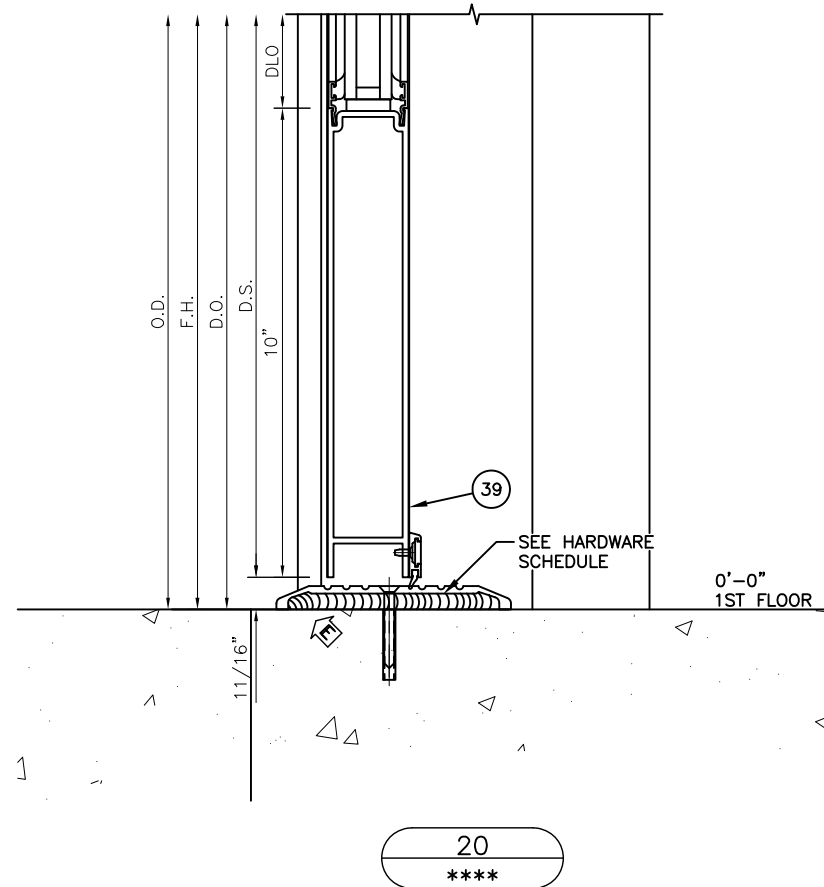
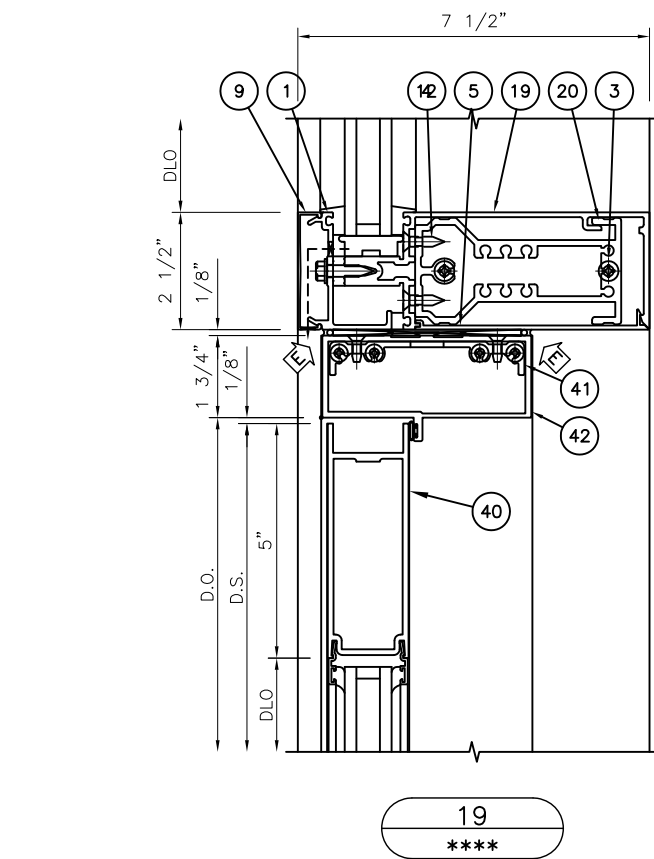
JOINT PLUG 162-321
(SEE INSTALLATION INSTRUCTIONS
(162-984) FOR INSTALLATION-
OF JOINT PLUGS WITH PRESSURE
PLATE AND COVER RUN THROUGH.

GLASS COMPANY
123 MAIN STREET

SHEET NO:

403

1 SCHILLING FARMS - MCR OFFICE BUILDING

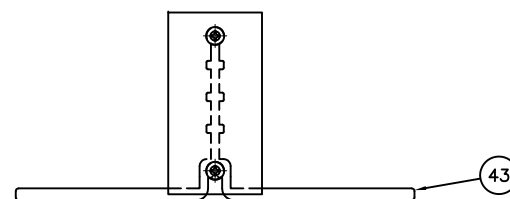
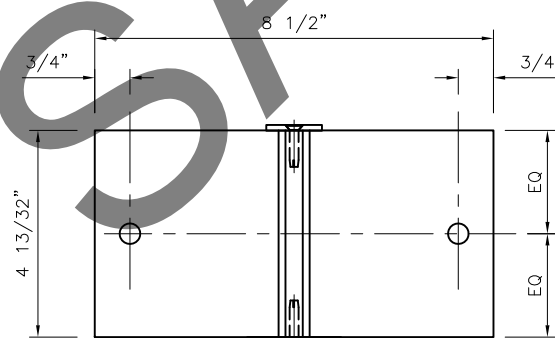
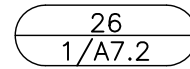
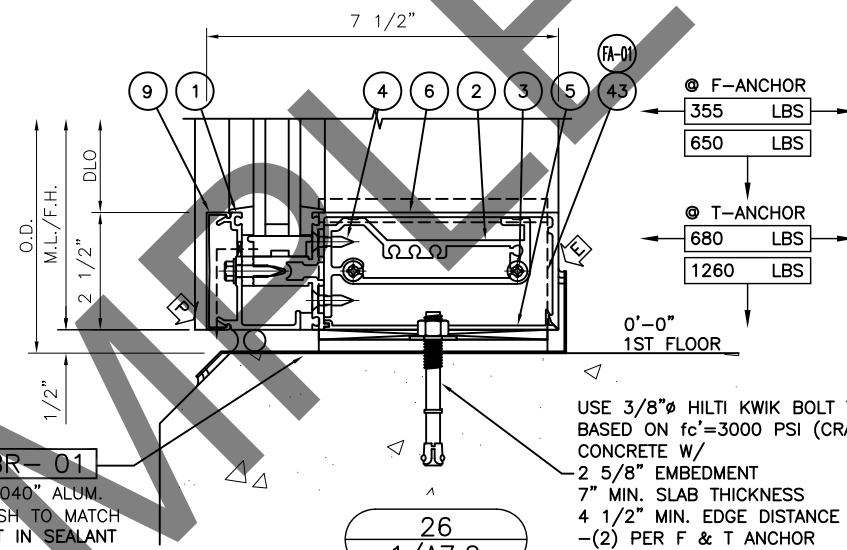
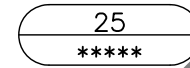
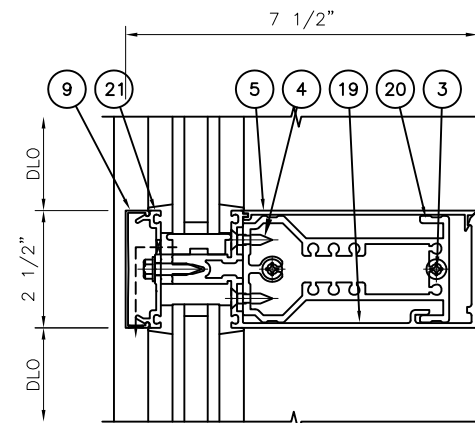
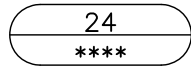
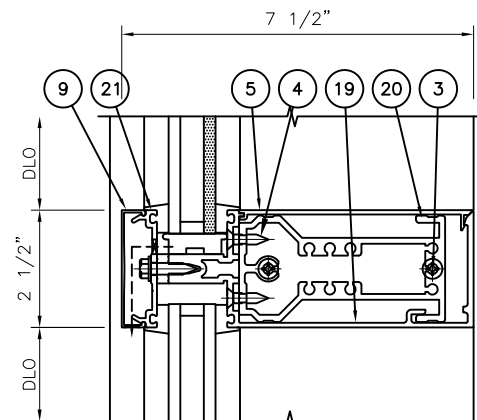
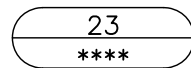
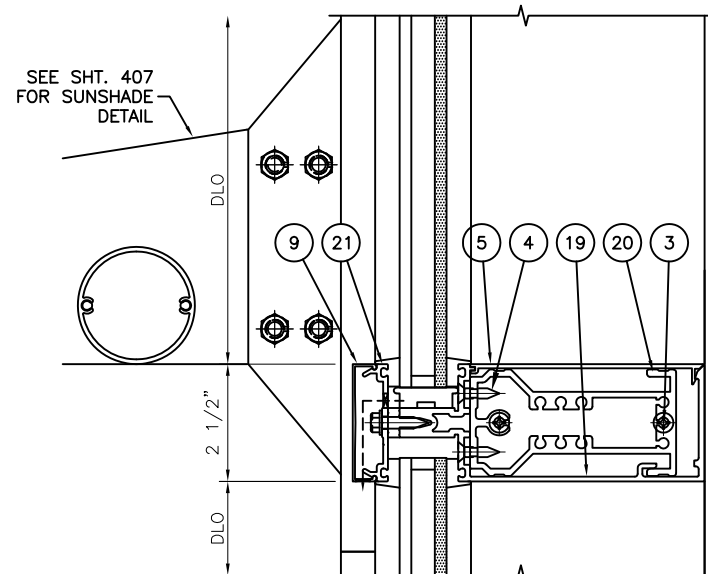
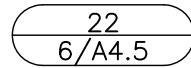
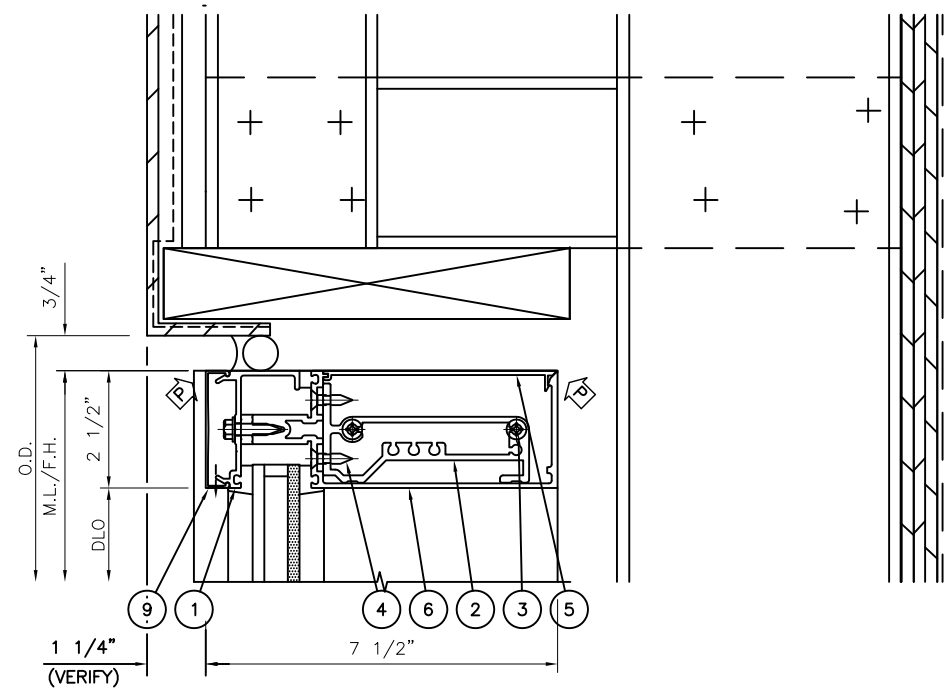


PARTS LIST			DRAWN BY:									
PART NO.		PART DESCRIPTION	XK CURTAINWALL SPECIALISTS									
1	162-505	PERIMETER	PH: 478-756-1814 FAX: 866-562-4621 SHOPDRAWINGS@XKCURTAINWALL.COM									
		PRESSURE PLATE										
3	128-394	#12 x 1 7/8" B PHTF	✓	✓	✓	✓	✓	✓	✓	✓	✓	DATE
4	128-405	#12 x 7/8" AB FHTF										
5	162-020	OPEN BACK FILLER	✓	✓	✓	✓	✓	✓	✓	✓	✓	REV.#
9	162-006	COVER										
12	977-110	#10 x 5/8" B FHTF	✓	✓	✓	✓	✓	✓	✓	✓	✓	
13	028-596	3/8" FLAT WASHER										
15	027-477	SEPARATOR (.031")	✓	✓	✓	✓	✓	✓	✓	✓	✓	
17	128-918	3/8-16 x 4 1/2" HHMS										
18	128-392	3/8-16 HEX LOCKNUT	✓	✓	✓	✓	✓	✓	✓	✓	✓	
19	162-091	HORIZONTAL										
20	162-378	SHEAR BLOCK	✓	✓	✓	✓	✓	✓	✓	✓	✓	
21	162-335	PRESSURE PLATE										
39	200-038	STANDARD 10"	✓	✓	✓	✓	✓	✓	✓	✓	✓	
		BOTTOM DOOR RAIL										
40	200-025	"500" STANDARD 5"	✓	✓	✓	✓	✓	✓	✓	✓	✓	
		TOP DOOR RAIL										
41	450-506	S/A T-BAR/HEADER	✓	✓	✓	✓	✓	✓	✓	✓	✓	
		CLIP PACKAGE										
42	450-502	S/A T-BAR/HEADER	✓	✓	✓	✓	✓	✓	✓	✓	✓	
		WITH 27-078 WEATHERING										
			✓	✓	✓	✓	✓	✓	✓	✓	✓	
			✓	✓	✓	✓	✓	✓	✓	✓	✓	
			✓	✓	✓	✓	✓	✓	✓	✓	✓	
			✓	✓	✓	✓	✓	✓	✓	✓	✓	
			✓	✓	✓	✓	✓	✓	✓	✓	✓	
			✓	✓	✓	✓	✓	✓	✓	✓	✓	
			✓	✓	✓	✓	✓	✓	✓	✓	✓	
			✓	✓	✓	✓	✓	✓	✓	✓	✓	
			✓	✓	✓	✓	✓	✓	✓	✓	✓	
			✓	✓	✓	✓	✓	✓	✓	✓	✓	
			✓	✓	✓	✓	✓	✓	✓	✓	✓	
			✓	✓	✓	✓	✓	✓	✓	✓	✓	
			✓	✓	✓	✓	✓	✓	✓	✓	✓	
			✓	✓	✓	✓	✓	✓	✓	✓	✓	
			✓	✓	✓	✓	✓	✓	✓	✓	✓	
			✓	✓	✓	✓	✓	✓	✓	✓	✓	
			✓	✓	✓	✓	✓	✓	✓	✓	✓	
			✓	✓	✓	✓						

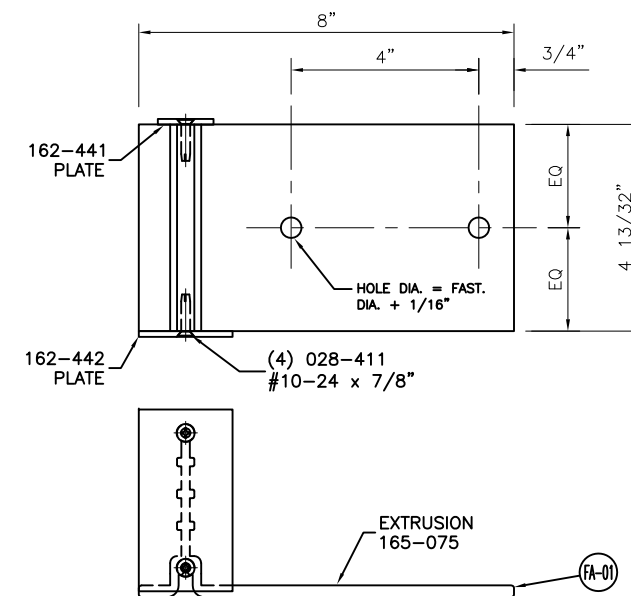
GLASS COMPANY
123 MAIN STREET

SHEET NO:

404



T-ANHCOR LAYOUT
USED AT DETAIL(S): 26/405



F-ANCHOR LAYOUT
USED AT DETAIL(S): 26/405
(NOTE: F-ANCHORS MAY BE HANDED)

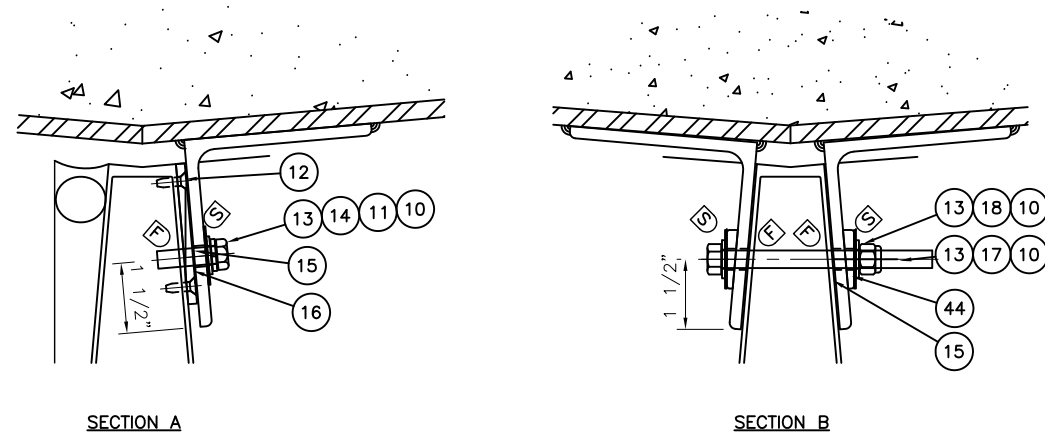
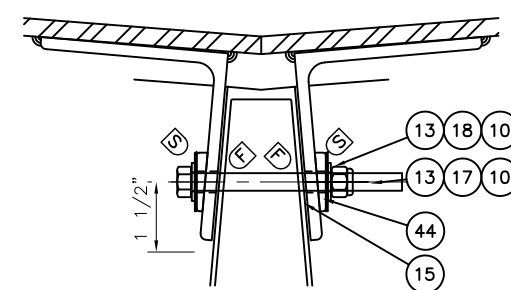
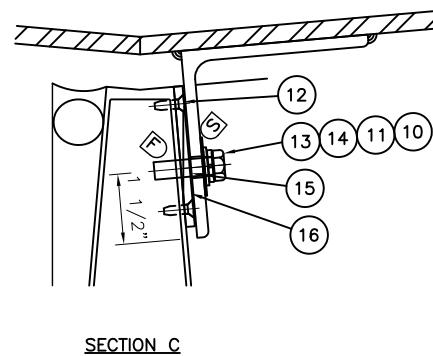
[illegible]

GLASS COMPANY
123 MAIN STREET

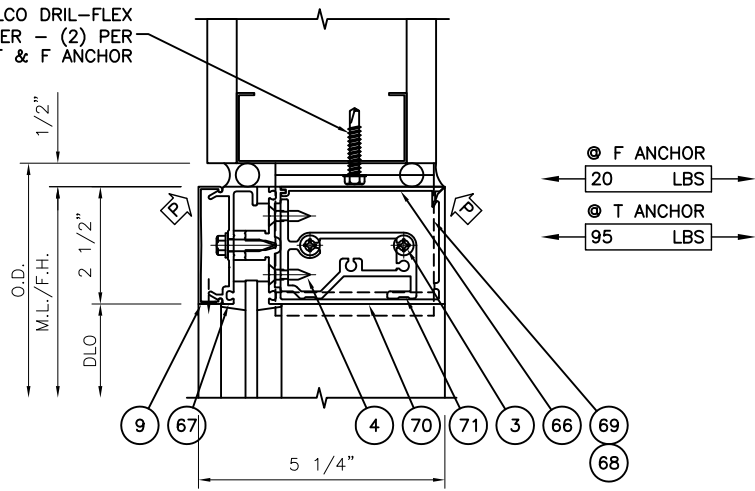
SHEET NO:

405

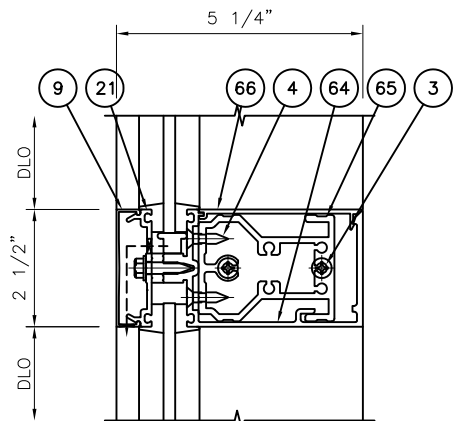
SCHILLING FARMS - MCR OFFICE BUILDING

[illegible]

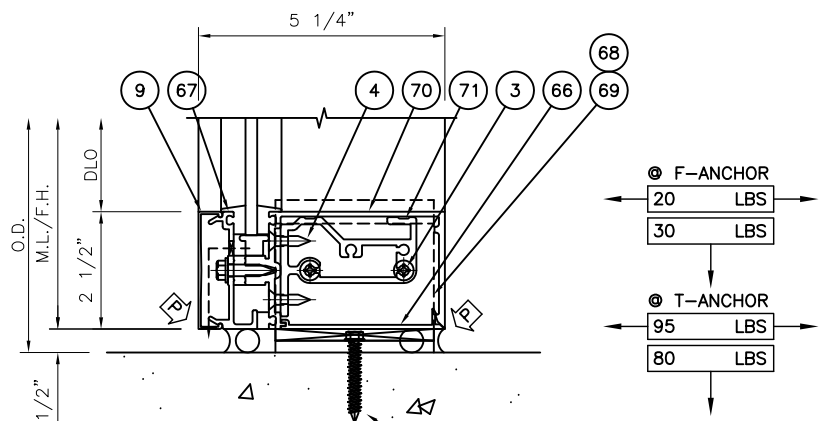
USE 1/4"-20 ELCO DRIL-FLEX
FASTENER - (2) PER
T & F ANCHOR



40

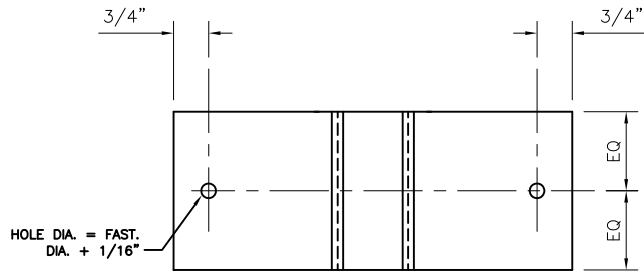


41

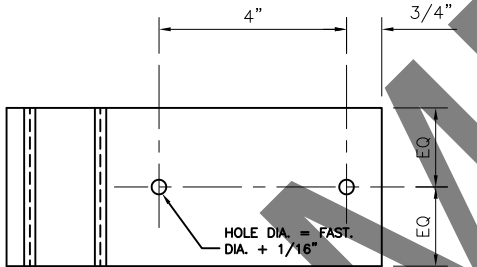


USE 1/4" ITW BUILDDEX
TAPCON W/ ADVANCED
THREAD FORM TECHNOLOGY INTO
fc'=2500 PSI (CRACKED) CONCRETE
W/ 1 1/2" EFFECTIVE EMBEDMENT
2 1/2" MIN. EDGE DISTANCE
- (2) PER F & T ANCHOR.

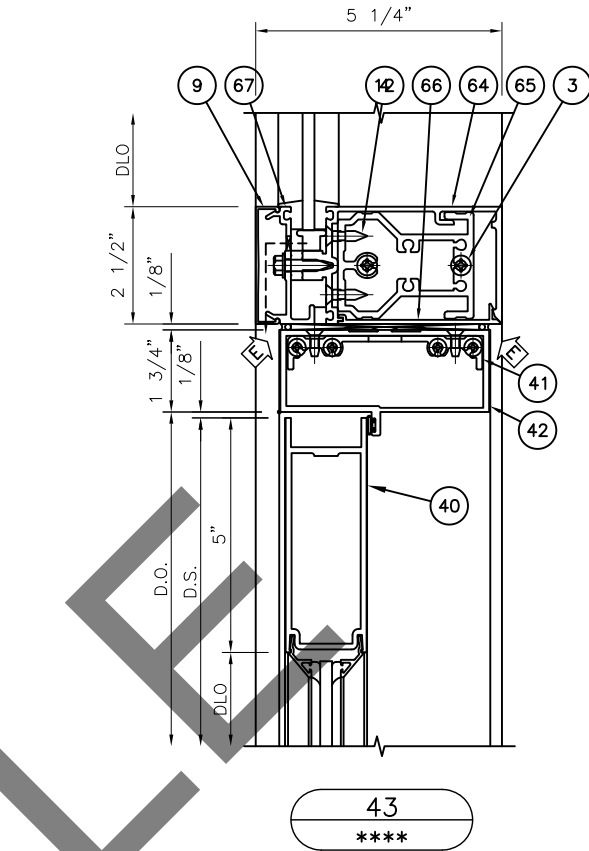
42



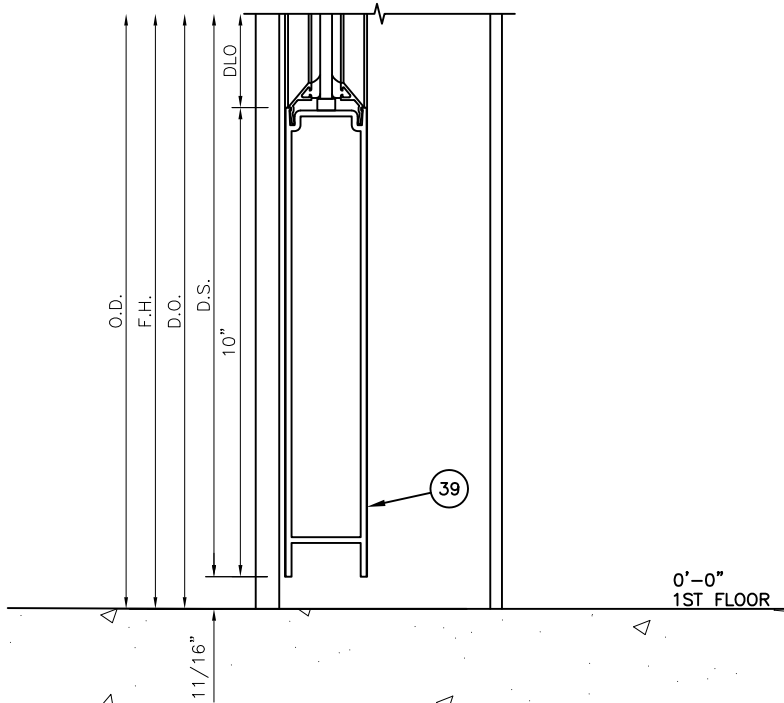
T-ANCHOR LAYOUT
USED AT DETAIL(S): 40/213, 42/413



F-ANCHOR LAYOUT
USED AT DETAIL(S): 40/213, 42/413
(NOTE: F-ANCHORS MAY BE HANDED)



43



44

PARTS LIST

PART NO.	PART DESCRIPTION
3 128-394	#12 x 1 7/8" B PHTF
4 128-405	#12 x 7/8" AB FHTF
9 162-006	COVER
12 977-110	#10 x 5/8" B FHTF
21 162-335	PRESSURE PLATE
39 200-038	STANDARD 10" BOTTOM DOOR RAIL
40 200-025	"500" STANDARD 5" TOP DOOR RAIL
41 450-506	S/A T-BAR/HEADER CLIP PACKAGE
42 450-502	S/A T-BAR/HEADER WITH 27-078 WEATHERING
64 162-092	HORIZONTAL
65 162-377	SHEAR BLOCK
66 162-021	OPEN BACK FILLER
67 162-506	PERIMETER PRESSURE PLATE
68 162-308	"F" ANCHOR
69 162-309	"T" ANCHOR
70 162-096	HORIZONTAL
71 162-331	SHEAR BLOCK

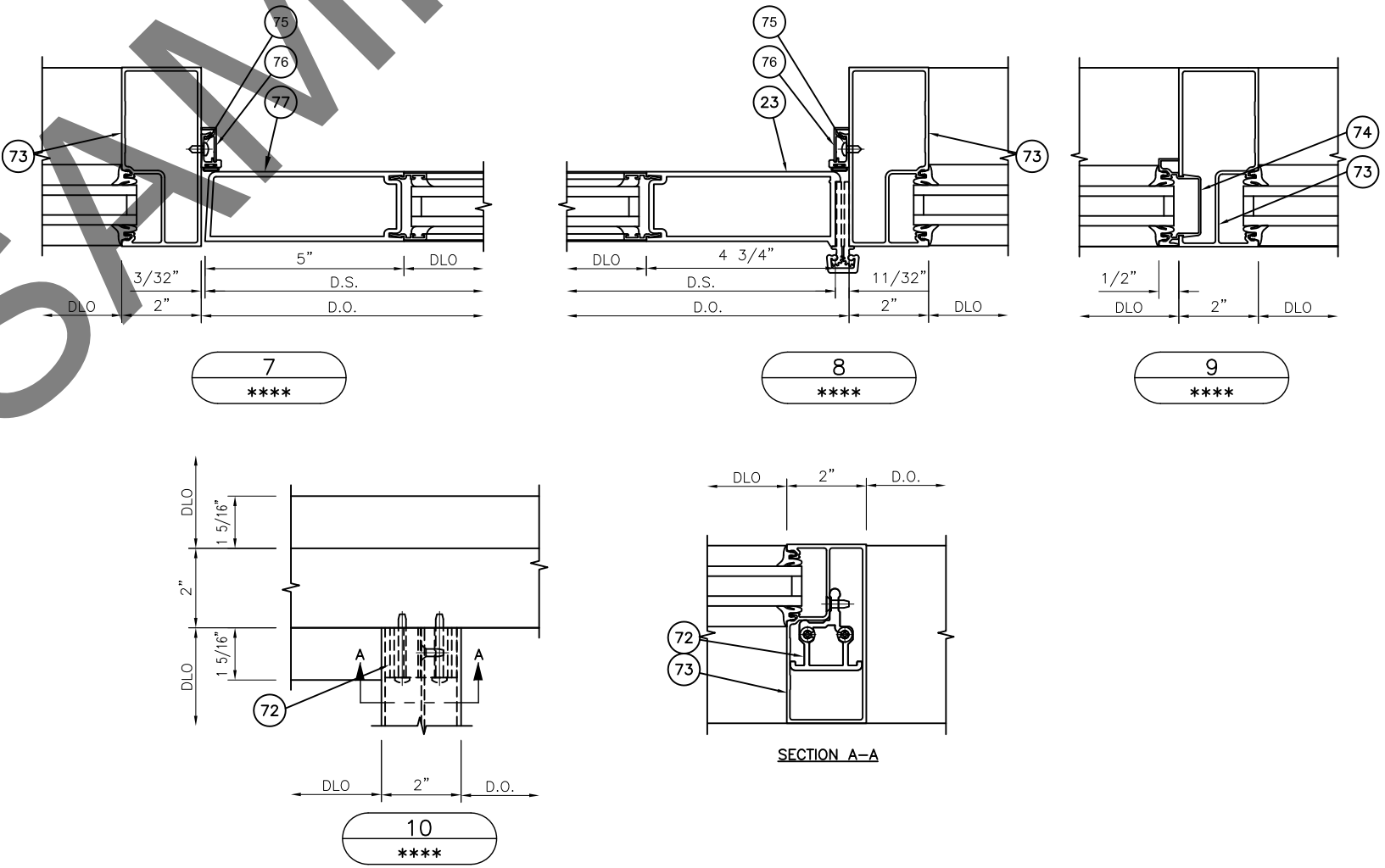
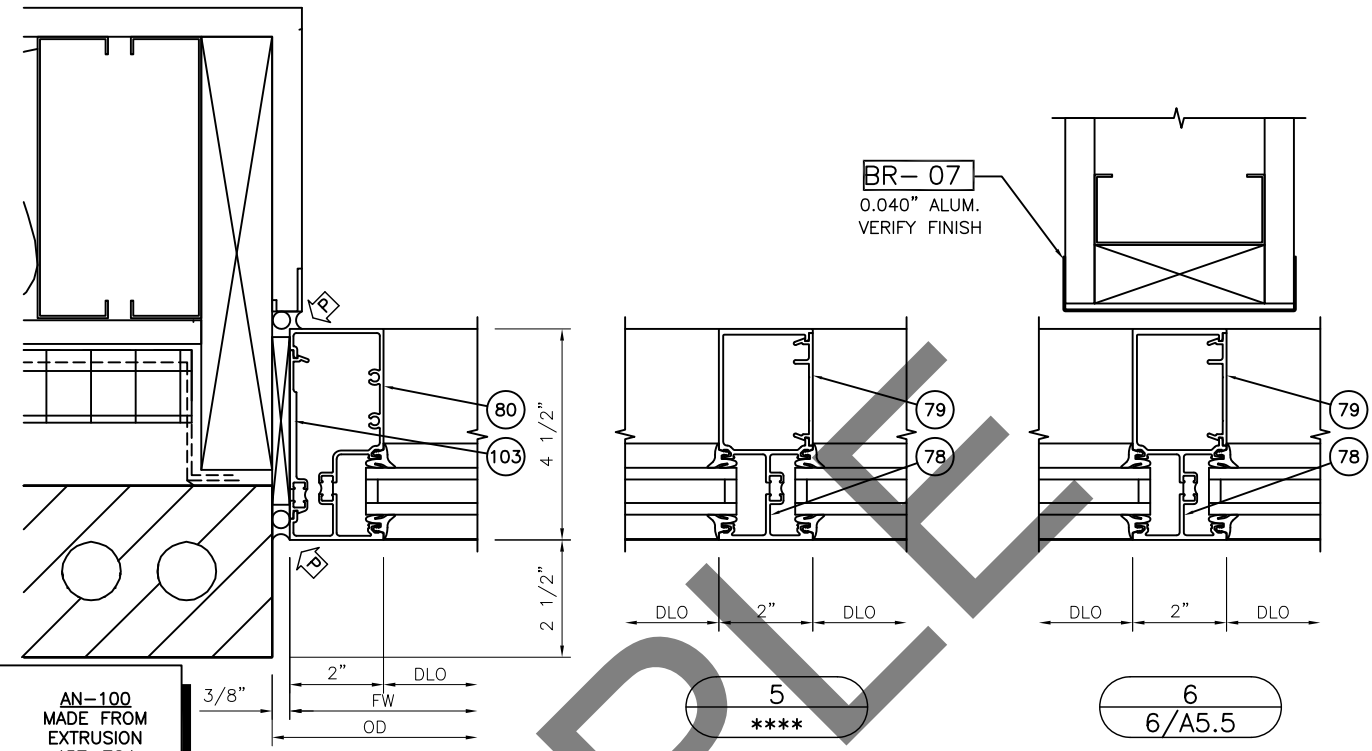
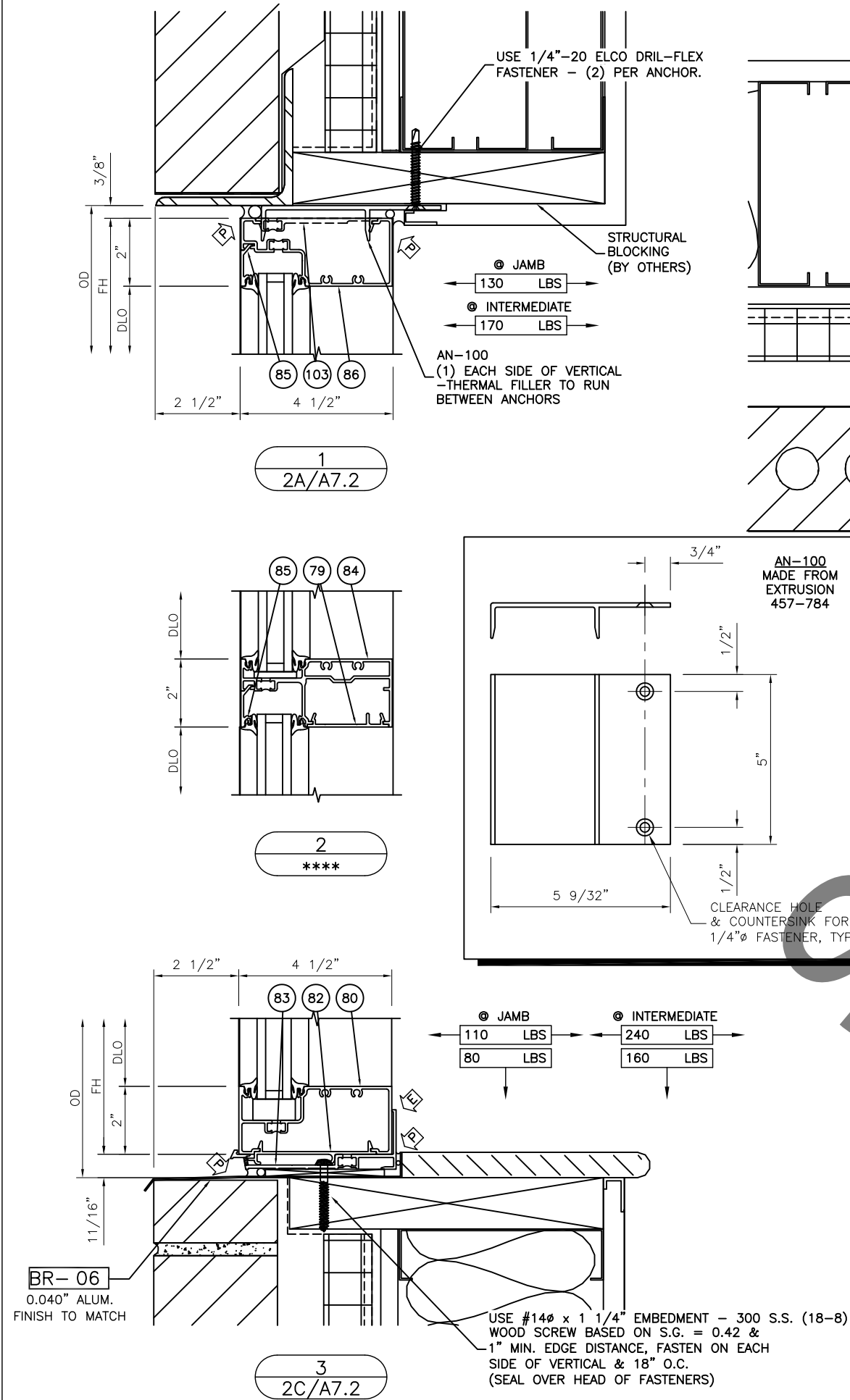
DRAWN BY:		XK CURTAINWALL SPECIALISTS	
PH: 478-756-1814		FAX: 866-562-4621	
SHOPDRAWINGS@XKCURTAINWALL.COM			
			DATE
			REV #
			DESCRIPTION:
			1ST APPROVAL
			PRINTS ISSUED FOR:

GLASS COMPANY
123 MAIN STREET

SHEET NO:

413

SCHILLING FARMS - MCR OFFICE BUILDING



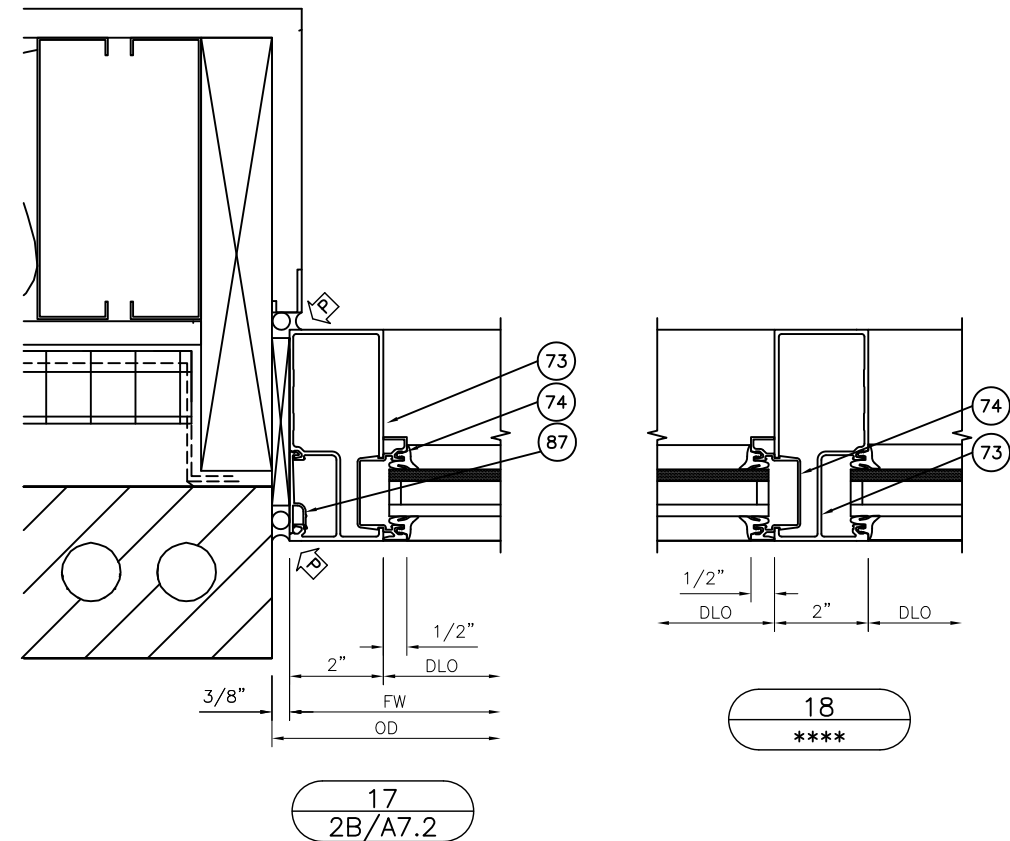
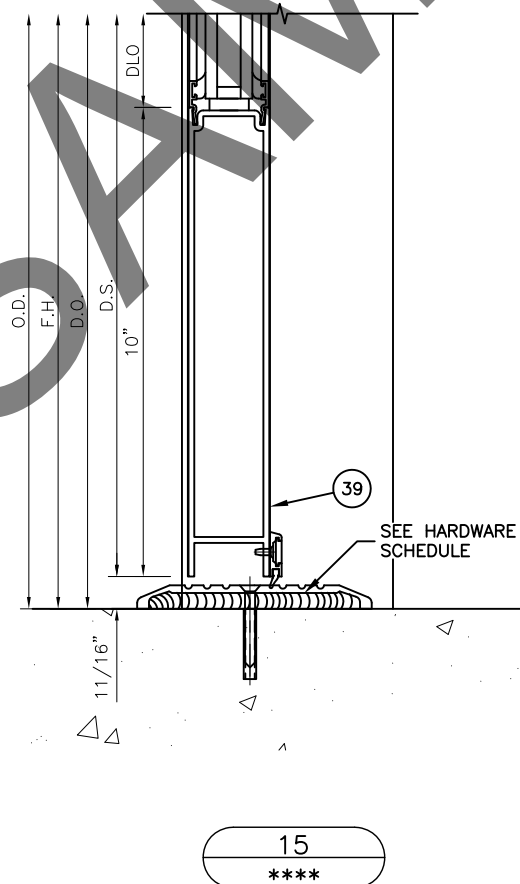
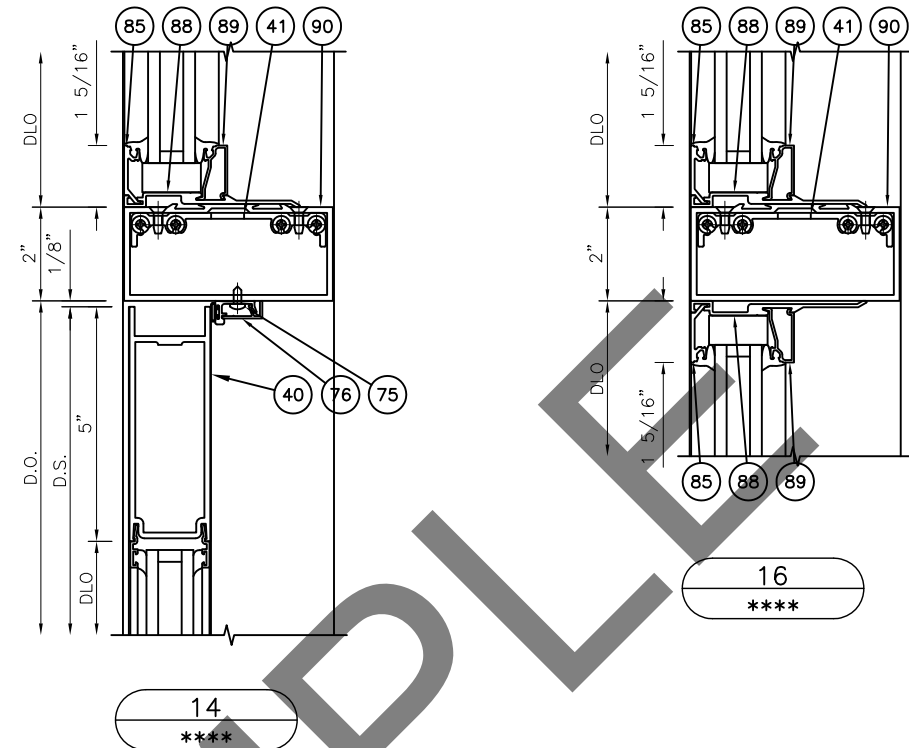
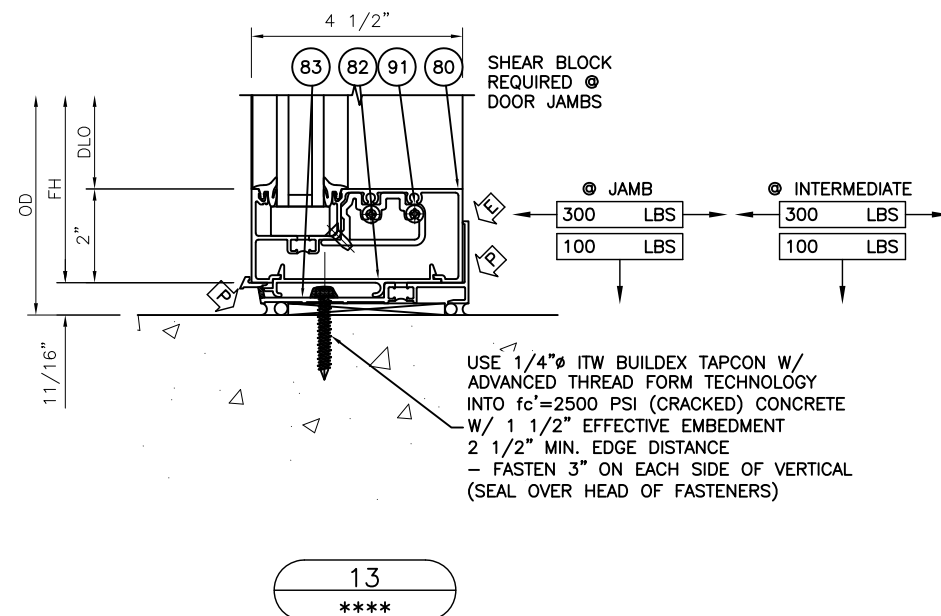
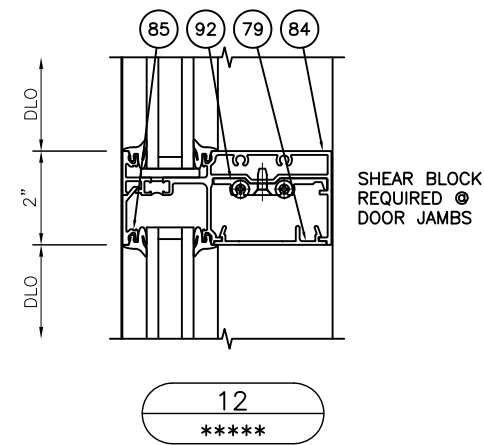
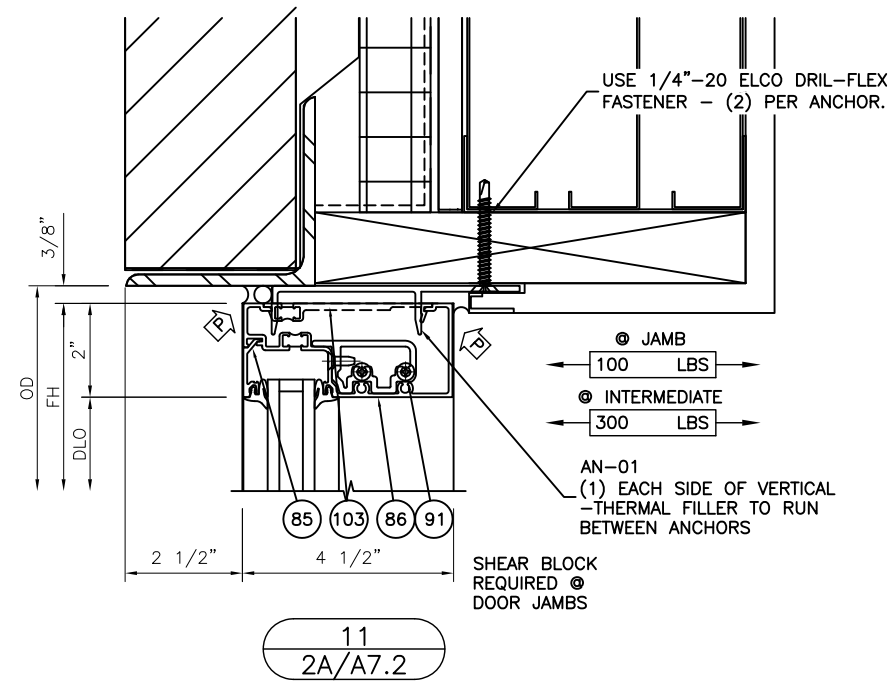
PARTS LIST		
PART NO.	PART DESCRIPTION	
23	200-013	"500" CONT. HINGE STILE
72	451-CG-525	SHEAR BLOCK PKG
73	451-VG-019	D/A DOOR JAMB
74	451-VG-033	POCKET INSERT
75	028-260	#8 x 3/8" AB PHST
76	069-177	DOOR STOP ASS'Y
77	200-008	"500" LOCK/PIVOT STILE
78	451T-VG-012	SPLIT MULLION
79	451-VG-026	MULLION FILLER
80	451T-VG-001	MULLION/SILL/JAMB
82	451-HP-126	FLASHING CLIP
83	451T-HP-037	HIGH PERFORMANCE FLASHING
84	451T-VG-011	HORIZONTAL
85	451-VG-004	GLASS STOP
86	451T-VG-003	HEAD
103	451T-026	THERMAL FILLER

DRAWN BY:
XK CURTAINWALL
SPECIALISTS
PH: 478-756-1814 FAX: 866-562-4621
SHOPDRAWINGS@XKCURTAINWALL.COM

DATE
REV #
DESCRIPTION:
1ST APPROVAL
PRINTS ISSUED FOR:

GLASS COMPANY
123 MAIN STREET
SCHILLING FARMS - MCR OFFICE BUILDING

SHEET NO:
500

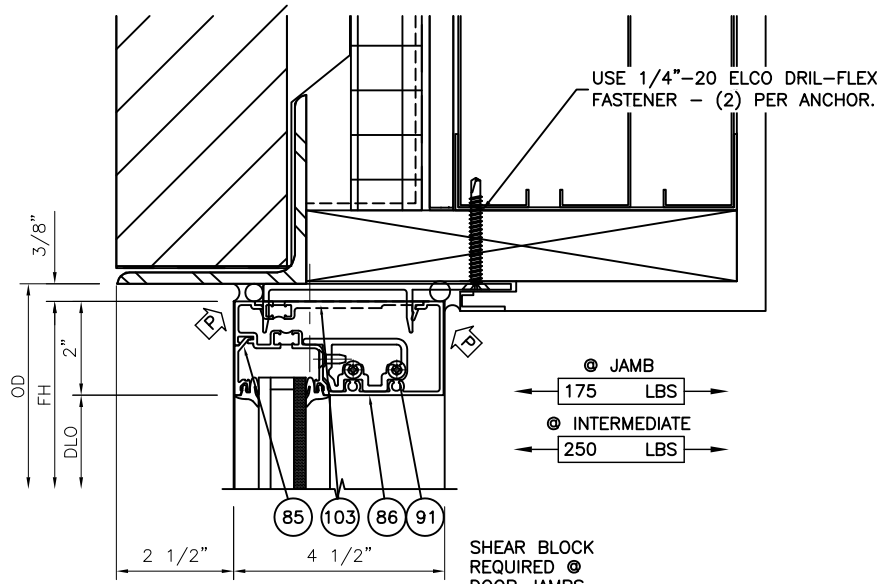
[illegible]

GLASS COMPANY
123 MAIN STREET

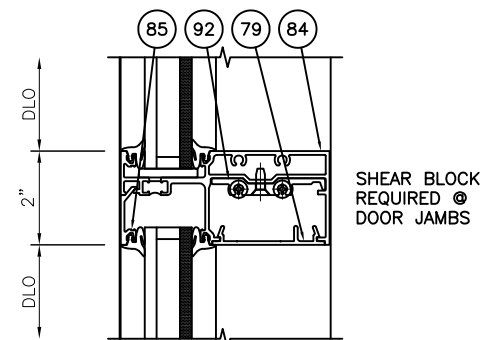
SHEET NO:

501

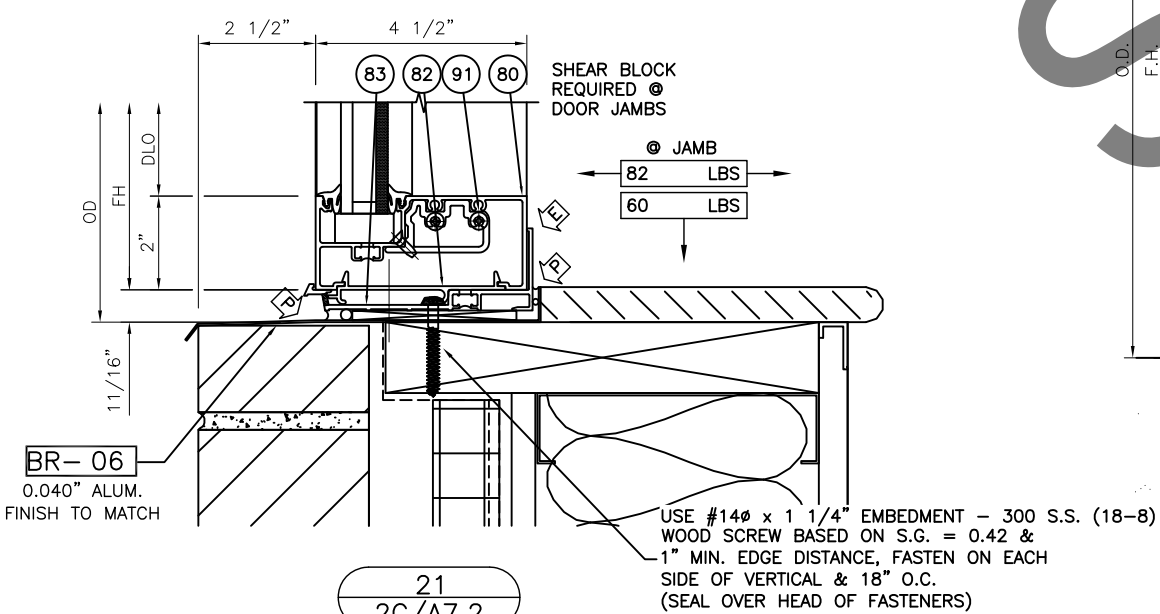
SCHILLING FARMS - MCR OFFICE BUILDING



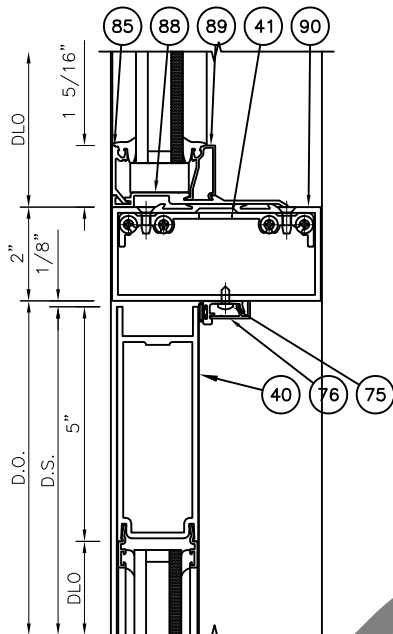
19
2A/A7.2



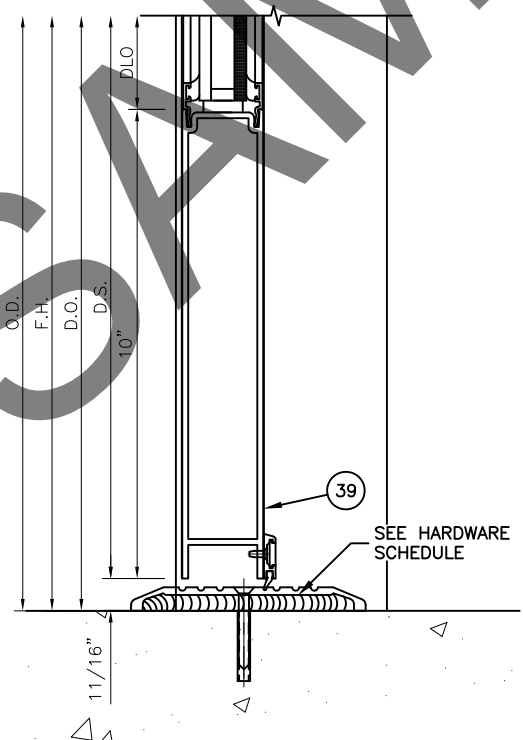
20



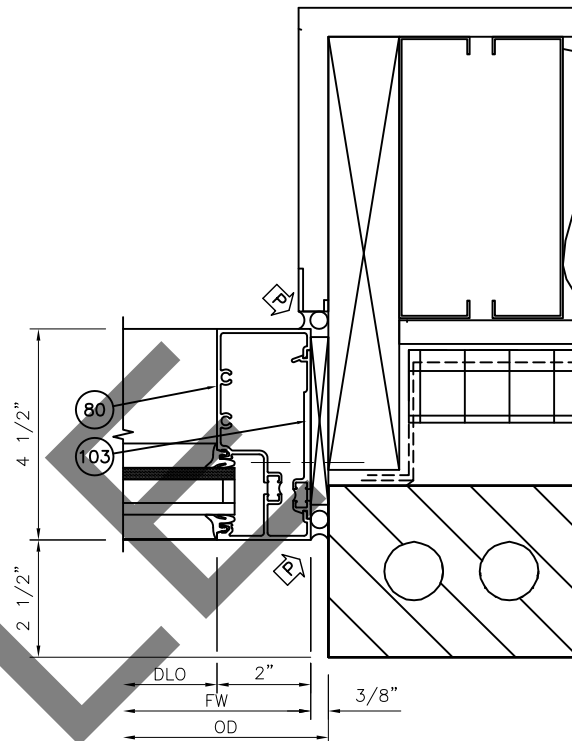
21
2C/A7.2



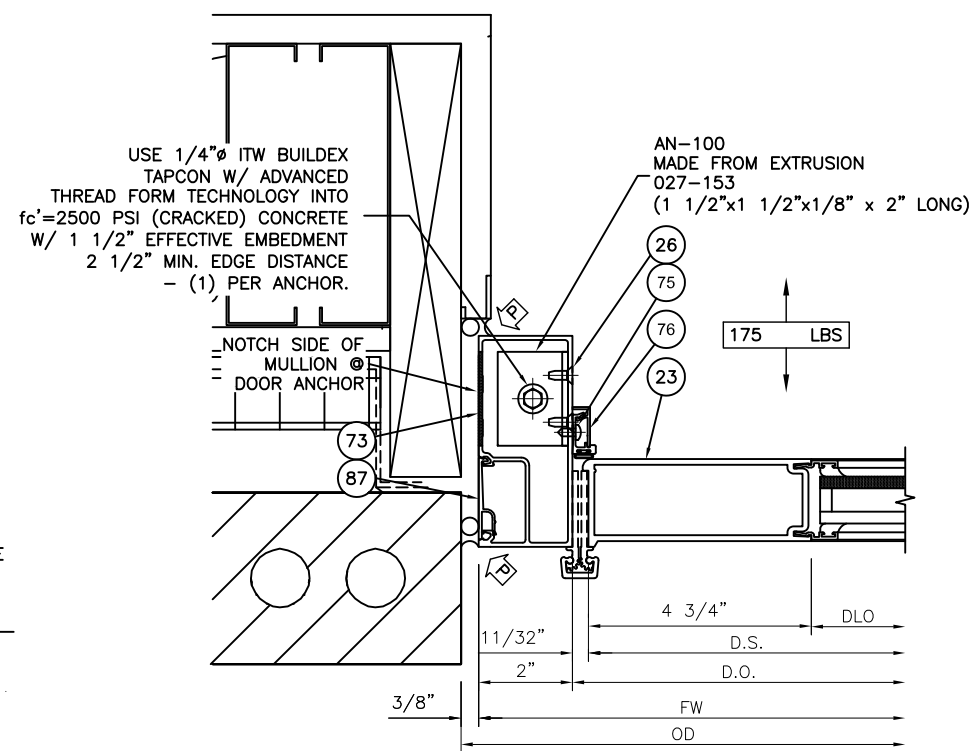
22



23



24
2B/A7.2



25
2B/A7.2

PARTS LIST		
PART NO.	PART DESCRIPTION	
23	200-013	"500" CONT. HINGE STILE
26	128-910	#10 x 1/2" B FHTF
39	200-038	STANDARD 10"
40	200-025	BOTTOM DOOR RAIL
		"500" STANDARD 5"
		TOP DOOR RAIL
41	450-506	S/A T-BAR/HEADER
		CLIP PACKAGE
73	451-VG-019	D/A DOOR JAMB
75	028-260	#8 x 3/8" AB PHST
76	069-177	DOOR STOP ASS'Y
79	451-VG-026	MULLION FILLER
80	451T-VG-001	MULLION/SILL/JAMB
82	451-HP-126	FLASHING CLIP
83	451T-HP-037	HIGH PERFORMANCE FLASHING
84	451T-VG-011	HORIZONTAL
85	451-VG-004	GLASS STOP
86	451T-VG-003	HEAD
87	451-087	PERIMETER FILLER
88	451-VG-022	T-BAR ADAPTER
89	450-022	GLASS STOP
90	451-079	D/A COC T-BAR/HDR
91	451-VG-524	SHEAR BLOCK PKG
92	451-VG-525	SHEAR BLOCK PKG
103	451T-026	THERMAL FILLER

DRAWN BY:
XK CURTAINWALL
SPECIALISTS
PH: 478-756-1814 FAX: 866-562-4621
SHOPDRAWINGS@XKCURTAINWALL.COM

DATE

REV #

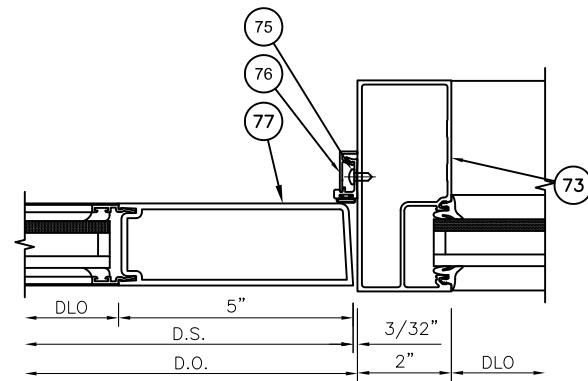
DESCRIPTION:

1ST APPROVAL
PRINTS ISSUED FOR:

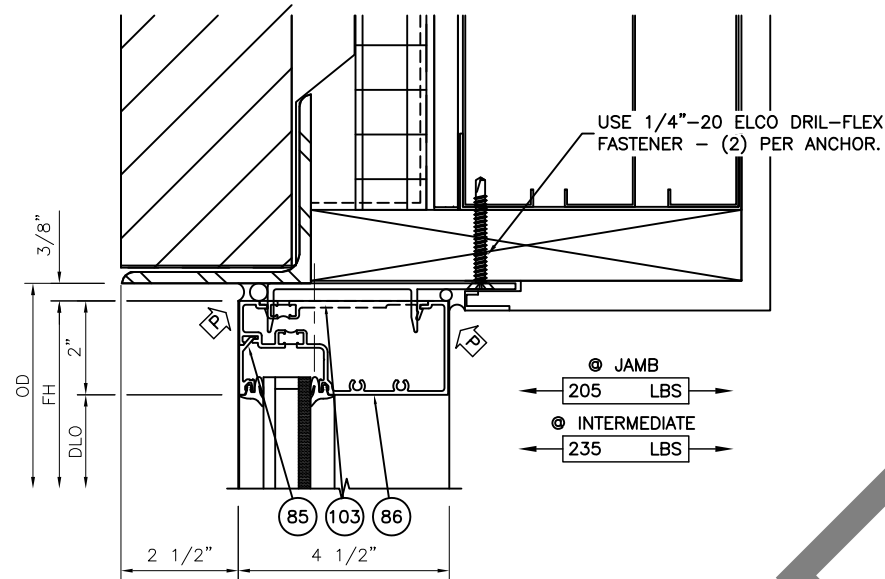
GLASS COMPANY
123 MAIN STREET

SHEET NO:
502

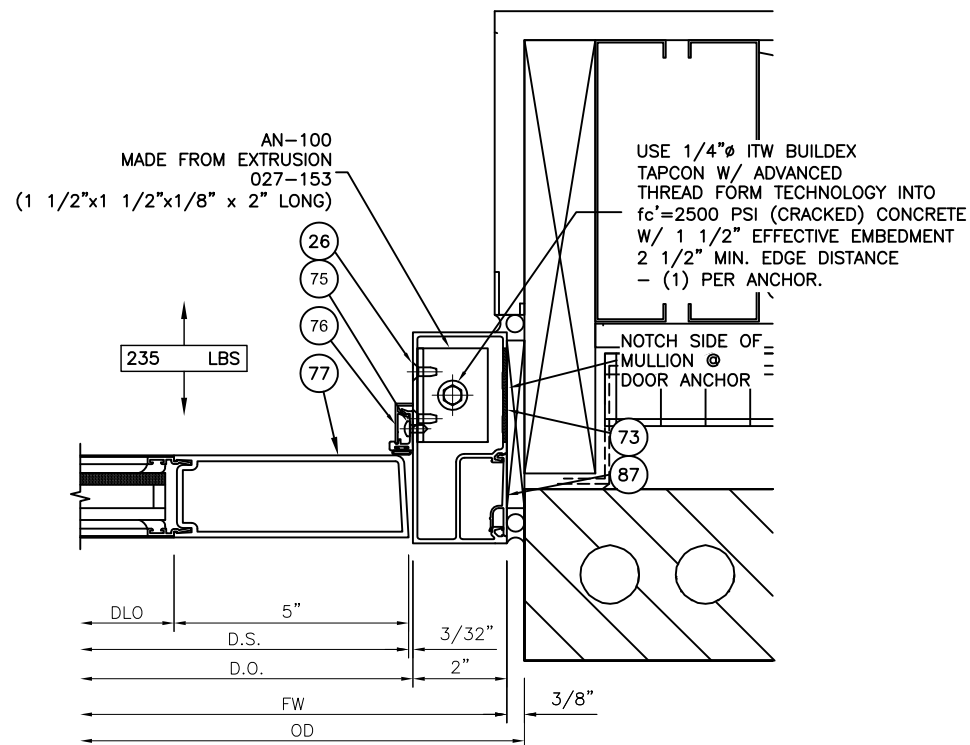
SCHILLING FARMS - MGR OFFICE BUILDING



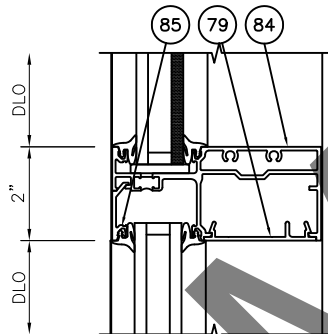
26



28
2A/A7.2



27
2B/A7.2



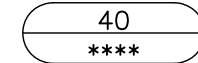
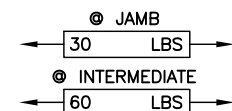
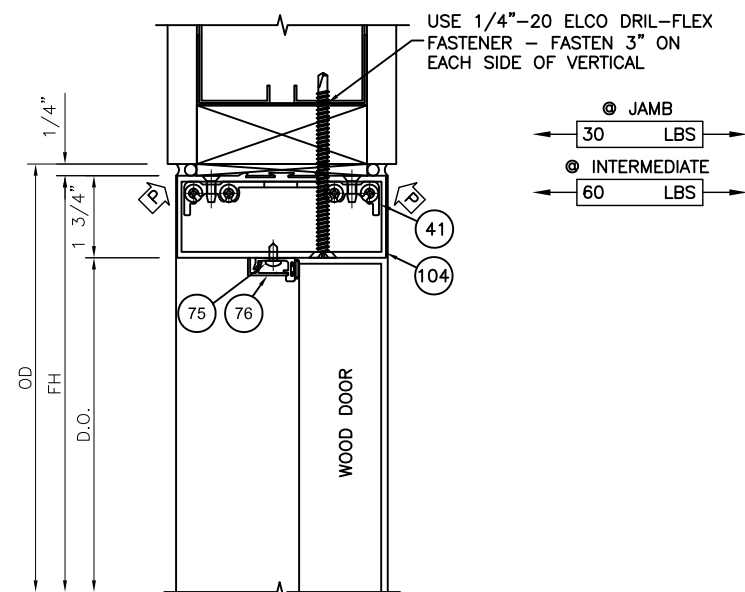
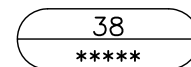
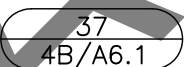
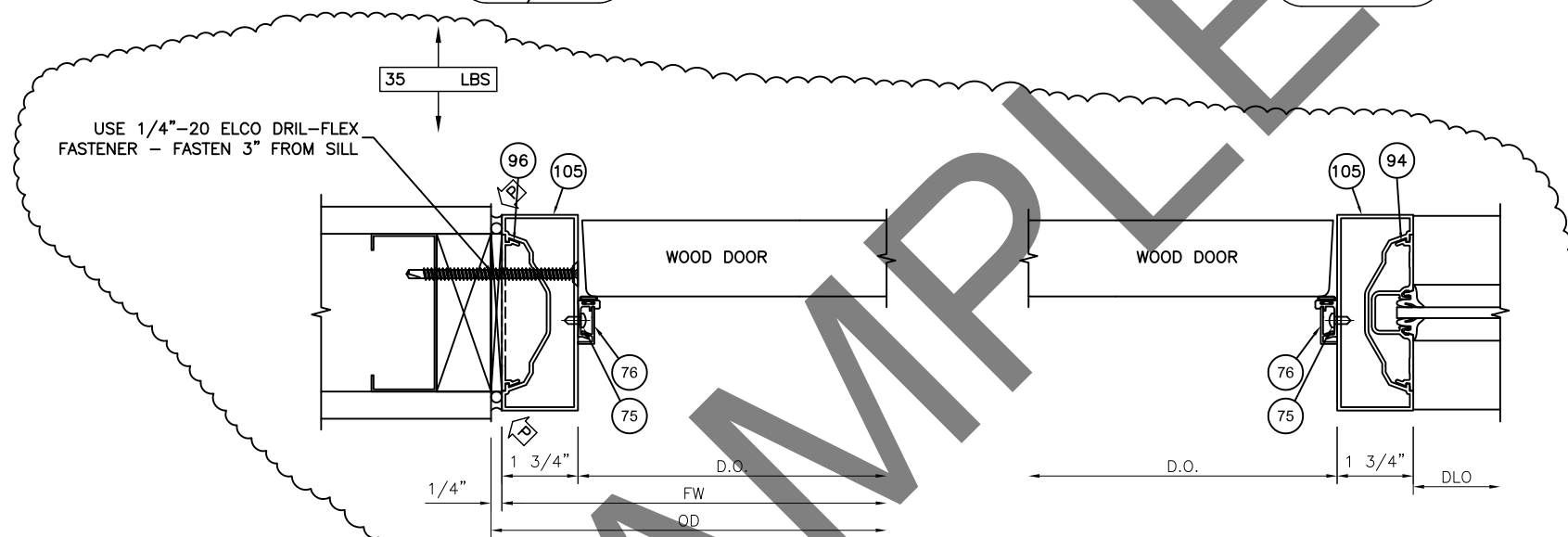
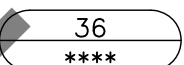
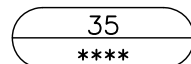
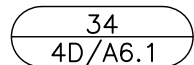
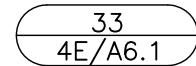
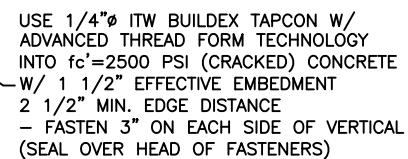
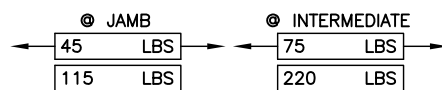
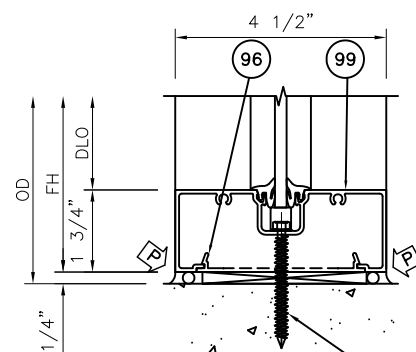
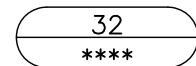
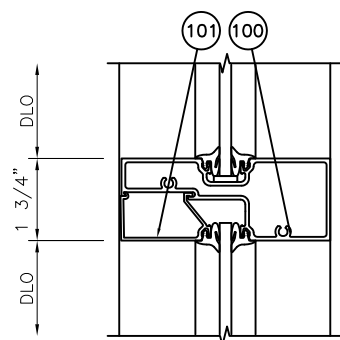
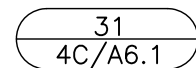
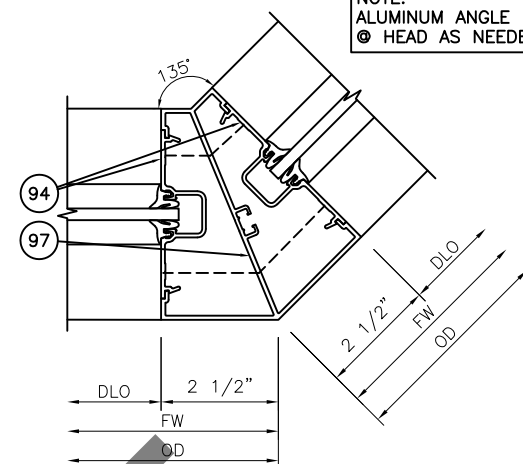
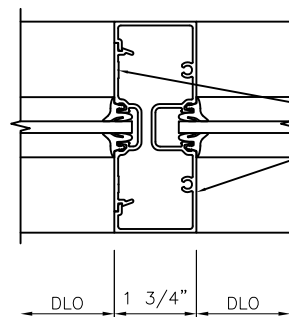
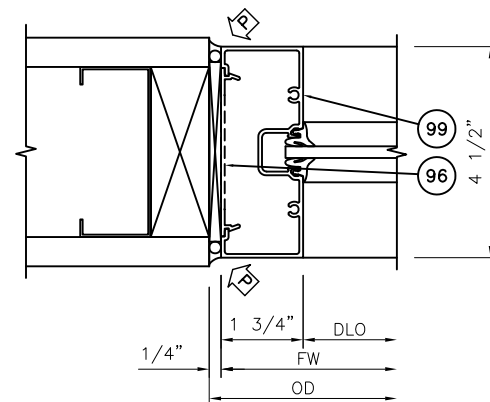
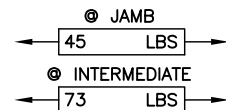
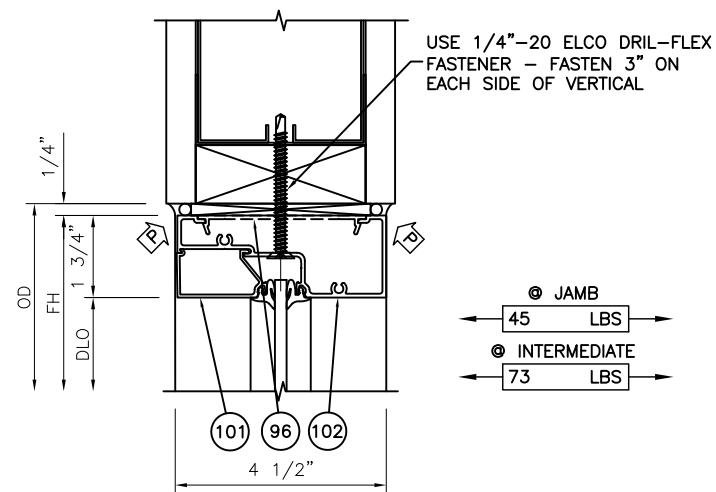
29

[illegible]

GLASS COMPANY
123 MAIN STREET

SHEET NO:

503

[illegible]

GLASS COMPANY
123 MAIN STREET

SHEET NO:

504

SCHILLING FARMS - MCR OFFICE BUILDING