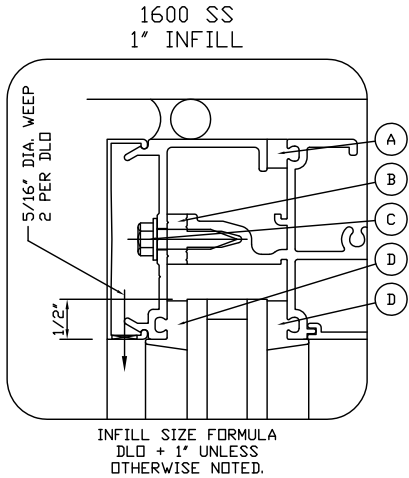


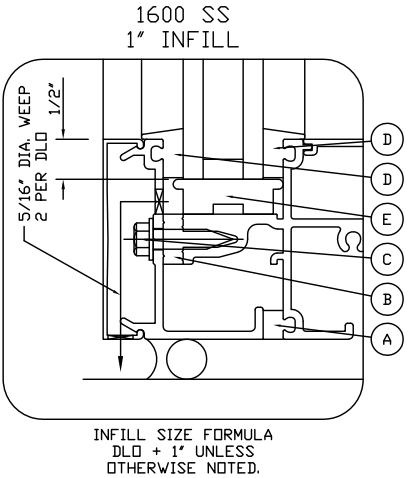


GLAZING DETAILS

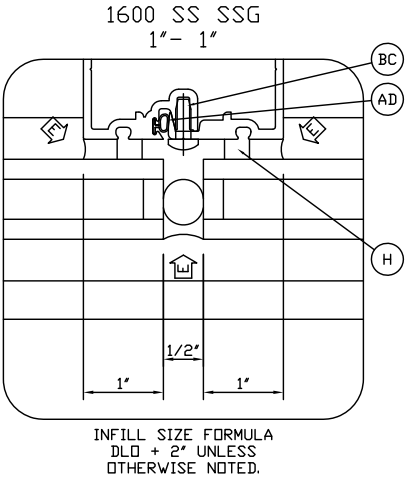
DRAWN BY:  
XK CURTAINWALL  
SPECIALISTS  
PH: 479-756-1814 FAX: 866-562-4821  
SHOPDRAWINGS@XKCURTAINWALL.COM  
WWW.XKCURTAINWALL.COM



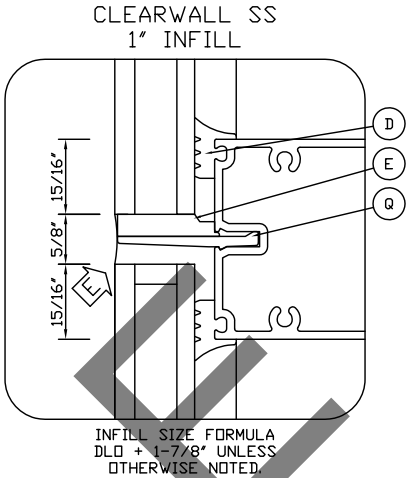
- A 027-857 FIXED GASKET  
(SHORE "A" 70±5 DUROMETER EPDM)  
B 162-310 THERMAL SEPARATOR  
(SHORE "A" 60±5 DUROMETER EPDM)  
C 128-406 1/4 x 1" AB HWHTF  
D 027-850 FIXED GASKET  
(SHORE "A" 60±5 DUROMETER EPDM)



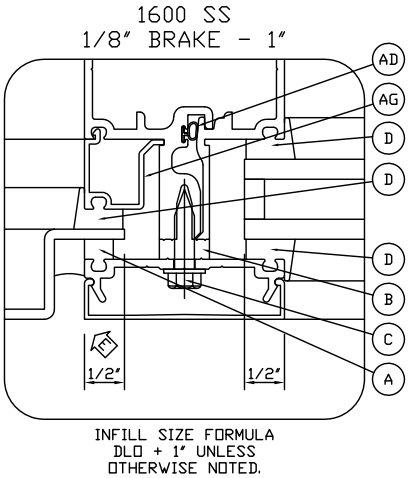
- A 027-857 FIXED GASKET  
(SHORE "A" 70±5 DUROMETER EPDM)  
B 162-310 THERMAL SEPARATOR  
(SHORE "A" 60±5 DUROMETER EPDM)  
C 128-406 1/4 x 1" AB HWHTF  
D 027-850 FIXED GASKET  
(SHORE "A" 60±5 DUROMETER EPDM)  
E 027-853 SETTING BLOCK  
(SHORE "A" 85±5 DUROMETER EPDM)



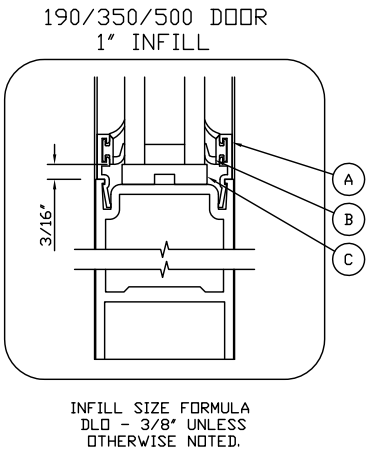
- H 027-475 FIXED GASKET  
(SHORE "A" 60±5 DUROMETER EPDM)  
AD 027-493 BULB GASKET  
(CO-EXTRUDED 65-A SANTOPRENE/  
POLYPROPYLENE)  
BC 977-108 #10 x 1/2" B PHTF



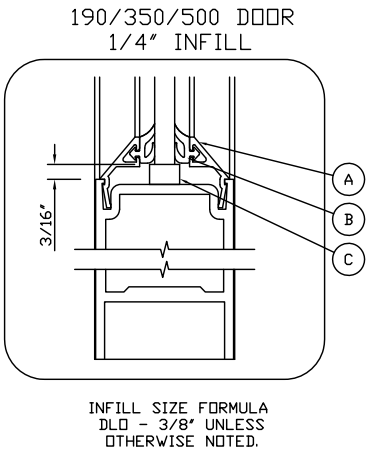
- D 127-161 INTERIOR FIXED GASKET  
(SHORE "DD" 70±10 DUROMETER EPDM SPONGE)  
E 127-158 SETTING BLOCK  
(SHORE "A" 85±5 DUROMETER SILICONE)  
Q 178-200 SS GLASS CHAIR



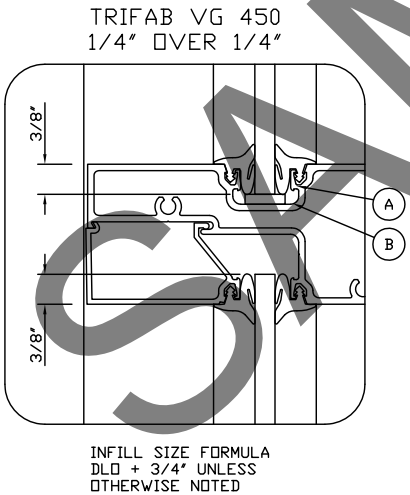
- A 027-857 FIXED GASKET  
(SHORE "A" 70±5 DUROMETER EPDM)  
B 162-310 THERMAL SEPARATOR  
(SHORE "A" 60±5 DUROMETER EPDM)  
C 128-406 1/4 x 1" AB HWHTF  
D 027-850 FIXED GASKET  
(SHORE "A" 60±5 DUROMETER EPDM)  
AD 027-493 BULB GASKET  
(CO-EXTRUDED 65-A SANTOPRENE/  
POLYPROPYLENE)  
AG 162-054 1/8" ADAPTER



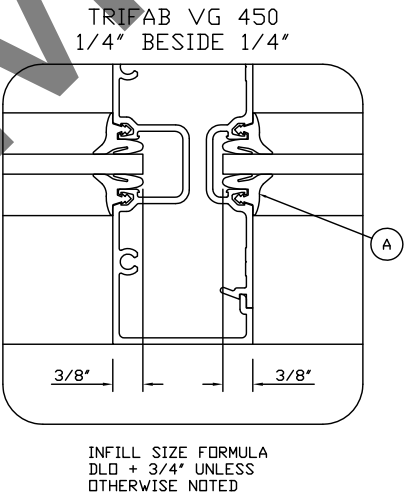
- A 200-045 GLASS STOP  
B 27-557 GASKET, DUAL DUROMETER (SHORE "A"  
64±5 DUROMETER SANTOPRENE,  
SHORE "D" 68 DUROMETER  
POLYPROPYLENE)  
C 27-339 SETTING BLOCK (SHORE "A" 85±5  
DUROMETER EPDM)



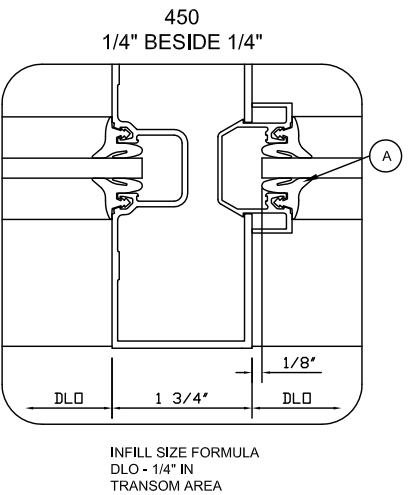
- A 200-041 GLASS STOP  
B 27-563 WEATHERING (SHORE "A" 70±5  
DUROMETER EPDM)  
C 27-555 SETTING BLOCK (SHORE "A" 85±5  
DUROMETER EPDM)



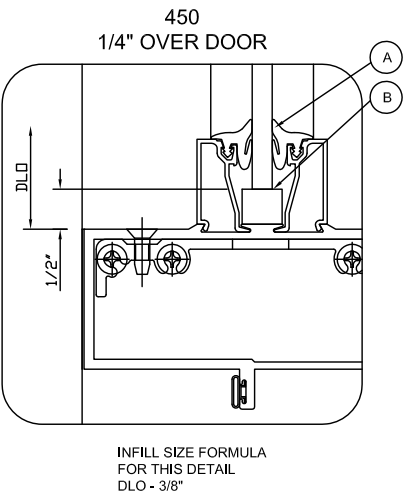
- A 27-074 STD. PUSH ON GASKET  
(SHORE "A" 70±5 DUROMETER EPDM)  
B 27-302 SETTING BLOCK  
(SHORE "A" 85±5 DUROMETER EPDM BLACK)



- A 27-074 STD. PUSH ON GASKET  
(SHORE "A" 70±5 DUROMETER EPDM)



- A 27-074 STD. PUSH ON GASKET  
(SHORE "A" 70±5 DUROMETER EPDM)



- A 27-074 STD. PUSH ON GASKET  
(SHORE "A" 70±5 DUROMETER EPDM)  
B 27-366 SETTING BLOCK  
(SHORE "A" 85±5 DUROMETER EPDM BLACK)


SHEET NO:

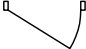
002


S:\WEBSTESAMPLE\JOBS\DELTA\HAWK ENGINES\001\LEADSHEETS.DWG 12/22/2016 11:17:43 AM


DOOR HARDWARE SCHEDULES

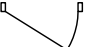
DRAWN BY:  
XK CURTAINWALL  
SPECIALISTS  
PH: 479-756-1814    FAX: 866-562-4821  
SHOPDRAWINGS@XKCURTAINWALL.COM  
WWW.XKCURTAINWALL.COM


DOOR#: 100			 LEFTHAND OUTSWING<LHRB>	
ELEV: D/205				
DOOR TYPE: NS190		SIZE: SEE ELEVATION	QTY.: 1	HDW SET:
QTY/ OPNG	FINISH	HARDWARE DESCRIPTION		
1	-	KAWNEER STANDARD CONTINUOUS HINGE		
1	-	KAWNEER CO9/CP-II PUSH PULL		
1	-	MS LOCK		
1	-	SURFACE CLOSER WITH HOLD-OPEN		
1	10	KAWNEER STANDARD THRESHOLD		
1	-	KAWNEER STANDARD BOTTOM DOOR WEATHERING		
-	-	-		
-	-	-		
-	-	-		
-	-	-		
-	-	-		
-	-	-		
-	-	-		
-	-	-		


DOOR#: 101 (INTERIOR)			 RIGHTHAND OUTSWING<LHRB>	
ELEV: J/209				
DOOR TYPE: NS190		SIZE: SEE ELEVATION	QTY.: 1	HDW SET:
QTY/ OPNG	FINISH	HARDWARE DESCRIPTION		
1	-	KAWNEER STANDARD CONTINUOUS HINGE		
1	-	KAWNEER CO9/CP-II PUSH PULL		
1	-	SURFACE CLOSER WITH HOLD-OPEN		
1	10	KAWNEER STANDARD THRESHOLD		
-	-	-		
-	-	-		
-	-	-		
-	-	-		
-	-	-		
-	-	-		
-	-	-		
-	-	-		
-	-	-		
-	-	-		

DOOR#: 102			 LEFTHAND INSWING	
ELEV: INT1/300				
DOOR TYPE: ALL GLASS		SIZE: SEE ELEVATION	QTY.: 1	HDW SET:
QTY/ OPNG	FINISH	HARDWARE DESCRIPTION		
1	-	DORMA BOTTOM PIVOTS		
1		JACKSON OVERHEAD CONCEALED CLOSER WITH HOLD OPEN		
2	-	ROCKWOOD RM3131 PULL HANDLES BTB		
1	-	CR LAURENCE DR4SBS12S 4" TOP DOOR RAIL (BRUSHED STAINLESS)		
1	-	CR LAURENCE PH11CBS BOTTOM DOOR PATCH (BRUSHED STAINLESS)		
-	-	-		
-	-	-		
-	-	-		
-	-	-		
-	-	-		
-	-	-		
-	-	-		
-	-	-		
-	-	-		

DOOR#: 105				
ELEV: INT3/301				
DOOR TYPE: ALL GLASS		SIZE: SEE ELEVATION	QTY: 1	HDW/SET:
QTY/ OPNG	FINISH	HARDWARE DESCRIPTION		
1	-	DORMA BOTTOM PIVOTS		
1		JACKSON OVERHEAD CONCEALED CLOSER WITH HOLD OPEN		
2	-	ROCKWOOD RM3131 PULL HANDLES BTB		
1	-	CR LAURENCE DR4SBS12S 4" TOP DOOR RAIL (BRUSHED STAINLESS)		
1	-	CR LAURENCE PH11CBS BOTTOM DOOR PATCH (BRUSHED STAINLESS)		
-	-	-		
-	-	-		
-	-	-		
-	-	-		
-	-	-		
-	-	-		
-	-	-		
-	-	-		
-	-	-		
-	-	-		

DOOR#: 106			 RIGHTHAND OUTSWING<LHRB>	
ELEV: INT2/300				
DOOR TYPE: ALL GLASS		SIZE: SEE ELEVATION	QTY.: 1	HDW SET:
QTY/ OPNG	FINISH	HARDWARE DESCRIPTION		
1	-	DORMA BOTTOM PIVOTS		
1		JACKSON OVERHEAD CONCEALED CLOSER WITH HOLD OPEN		
2	-	ROCKWOOD RM3131 PULL HANDLES BTB		
1	-	CR LAURENCE DR4SBS12S 4" TOP DOOR RAIL (BRUSHED STAINLESS)		
1	-	CR LAURENCE PH11CBS BOTTOM DOOR PATCH (BRUSHED STAINLESS)		
-	-	-		
-	-	-		
-	-	-		
-	-	-		
-	-	-		
-	-	-		
-	-	-		
-	-	-		
-	-	-		

DOOR#: 109, 110, 111			 LEFTHAND INSWING	
ELEV: INT7, INT6, INT5/302				
DOOR TYPE: ALL GLASS		SIZE: SEE ELEVATION	QTY.: 3	HDW SET:
QTY/ OPNG	FINISH	HARDWARE DESCRIPTION		
1	-	DORMA BOTTOM PIVOTS		
1		JACKSON OVERHEAD CONCEALED CLOSER WITH HOLD OPEN		
2	-	ROCKWOOD RM3131 PULL HANDLES BTB		
1	-	CR LAURENCE DR4SBS12S 4" TOP DOOR RAIL (BRUSHED STAINLESS)		
1	-	CR LAURENCE PH11CBS BOTTOM DOOR PATCH (BRUSHED STAINLESS)		
-	-	-		
-	-	-		
-	-	-		
-	-	-		
-	-	-		
-	-	-		
-	-	-		
-	-	-		
-	-	-		

DOOR#: 114A		 LEFTHAND INSWING		
ELEV: INT4/301				
DOOR TYPE: ALL GLASS		SIZE: SEE ELEVATION	QTY.: 1	HDW SET:
QTY/ OPNG	FINISH	HARDWARE DESCRIPTION		
1	-	DORMA BOTTOM PIVOTS		
1		JACKSON OVERHEAD CONCEALED CLOSER WITH HOLD OPEN		
2	-	ROCKWOOD RM3131 PULL HANDLES BTB		
1	-	CR LAURENCE DR4SBS12S 4" TOP DOOR RAIL (BRUSHED STAINLESS)		
1	-	CR LAURENCE PH11CBS BOTTOM DOOR PATCH (BRUSHED STAINLESS)		
-	-	-		
-	-	-		
-	-	-		
-	-	-		
-	-	-		
-	-	-		
-	-	-		
-	-	-		
-	-	-		

SHEET NO:

003

S:\WEB SITE\SAMPLE JOBS\DELTA HAWK ENGINES\001 LEADSHEETS.DWG 12/22/2016 11:17:49 AM











NOTE:  
PERFORATED ALUMINUM PANELS ARE NOT SHOWN FOR CLARITY. SEE SEPARATE SUBMITTAL FOR PANEL DRAWINGS (BY OTHERS).

PRODUCT: KAWNEER 1600 SCREW SPLINE  
2 1/2"x7 1/2"

---

REQ'D THUS = 1  
ARCH. REF.: \*\*\*\*\*

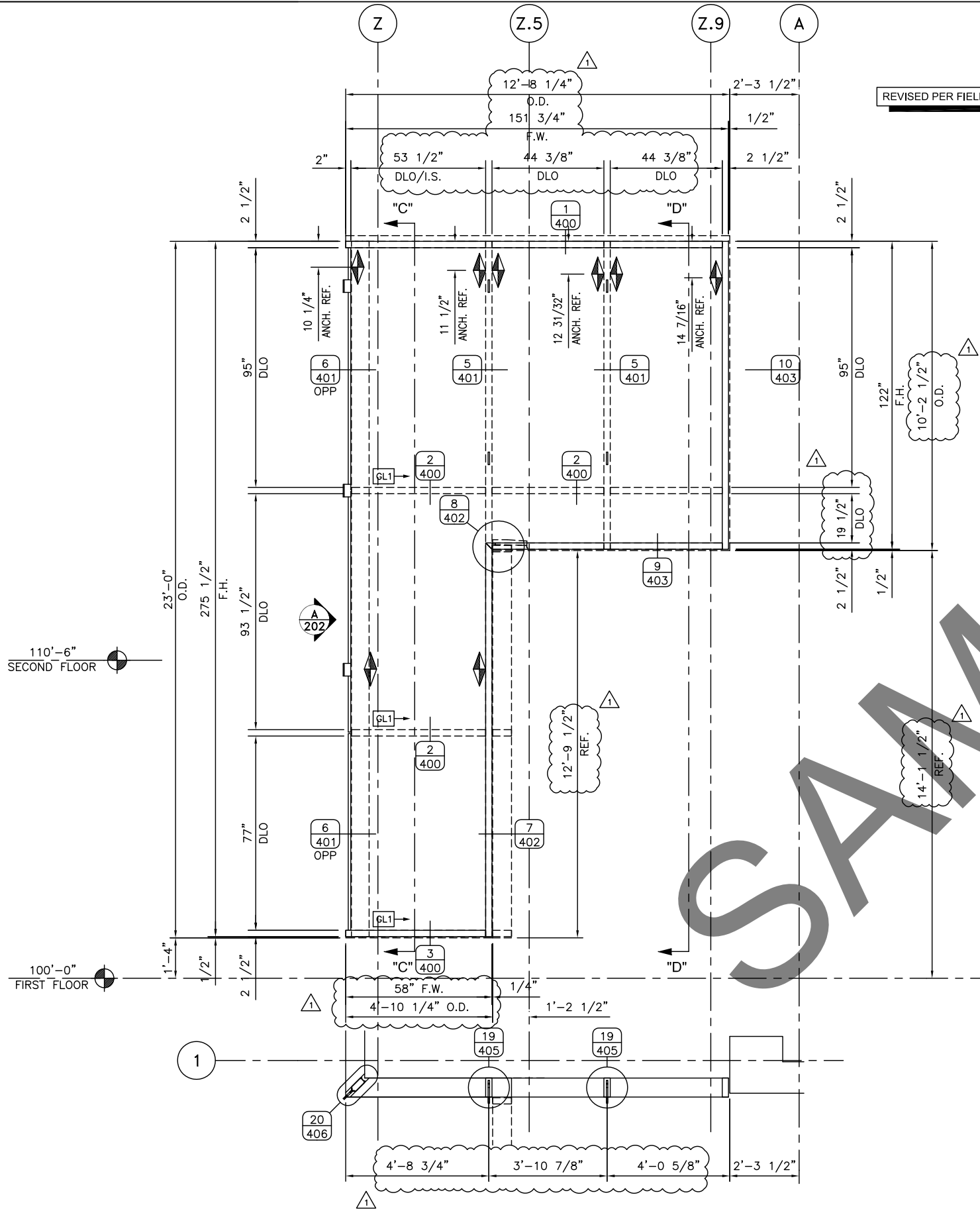
DRAWN BY:					
XK CURTAINWALL SPECIALISTS					
PH: 479-756-1814			FAX: 866-562-4621		
SHOPDRAWINGS@XKCURTAINWALL.COM					
WWW.XKCURTAINWALL.COM					
	-	-	-	-	-
	-	-	-	-	-
	-	-	-	-	-
	-	-	-	-	-
	-	-	-	-	-
FABRICATION			REVISED PER FIELD DIMENSIONS	1	SE
1ST APPROVAL				-	SE/KL
PRINTS ISSUED FOR:			DESCRIPTION:	REV #	BY
					DATE

SHEET NO:

# 202







REVISED PER FIELD CONDITIONS.

WALL SECTION "C-C"  
ARCH REF: C/15 sim

WALL SECTION "D-D"  
ARCH REF: B/14

NOTE:  
PERFORATED ALUMINUM PANELS ARE NOT  
SHOWN FOR CLARITY. SEE SEPARATE  
SUBMITTAL FOR PANEL DRAWINGS (BY  
OTHERS).

PRODUCT: KAWNEER 1600 SCREW SPLINE  
2 1/2"x7 1/2"

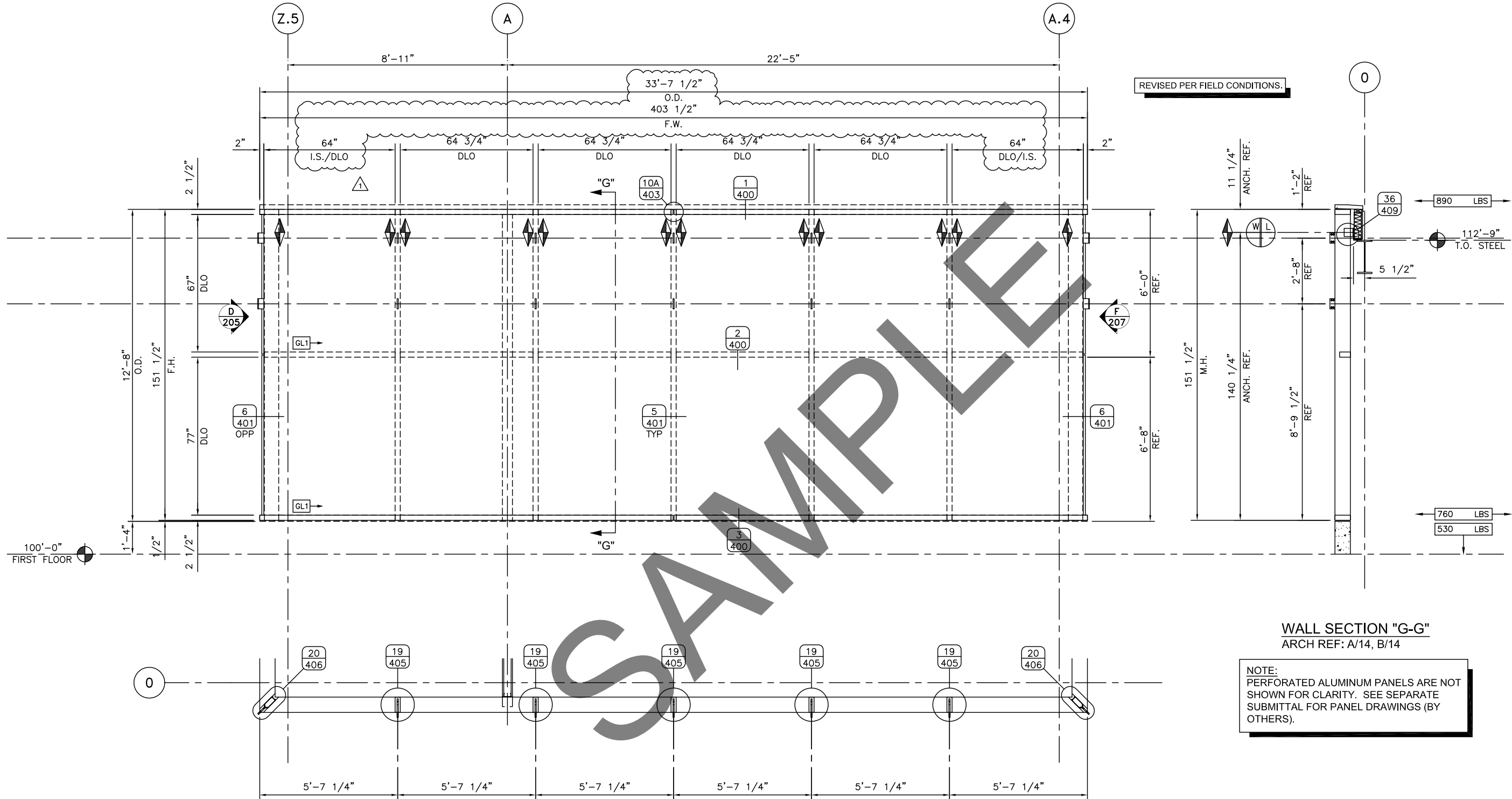
REQ'D THUS = 1  
ARCH. REF.: SHEET 12

DRAWN BY:  
XK CURTAINWALL  
SPECIALISTS  
PH: 479-756-1814 FAX: 866-562-4621  
SHOPDRAWINGS@XKCURTAINWALL.COM  
WWW.XKCURTAINWALL.COM

REV #	BY	DATE	DESCRIPTION
1	SE	11-11-15	REVISED PER FIELD DIMENSIONS
2	SE/KL	10-07-15	1ST APPROVAL
3			PRINTS ISSUED FOR:

SHEET NO:





WALL SECTION "G-G"  
ARCH REF: A/14, B/14

NOTE:  
PERFORATED ALUMINUM PANELS ARE NOT  
SHOWN FOR CLARITY. SEE SEPARATE  
SUBMITTAL FOR PANEL DRAWINGS (BY  
OTHERS).

PRODUCT: KAWNEER 1600, SCREW SPLINE  
2 1/2"x7 1/2"  
REQ'D THUS = 1  
ARCH.REF.: SHEET 12

DRAWN BY:  
XK CURTAINWALL  
SPECIALISTS  
PH: 479-756-1814 FAX: 866-562-4821  
SHOPDRAWINGS@XKCURTAINWALL.COM  
WWW.XKCURTAINWALL.COM

REV #	BY	DATE	DESCRIPTION
1	SE	11-11-15	REVISED PER FIELD DIMENSIONS
1	SE/KL	10-07-15	FABRICATION
1	SE/KL	10-07-15	1ST APPROVAL
1	SE/KL	10-07-15	PRINTS ISSUED FOR:

SHEET NO:

206





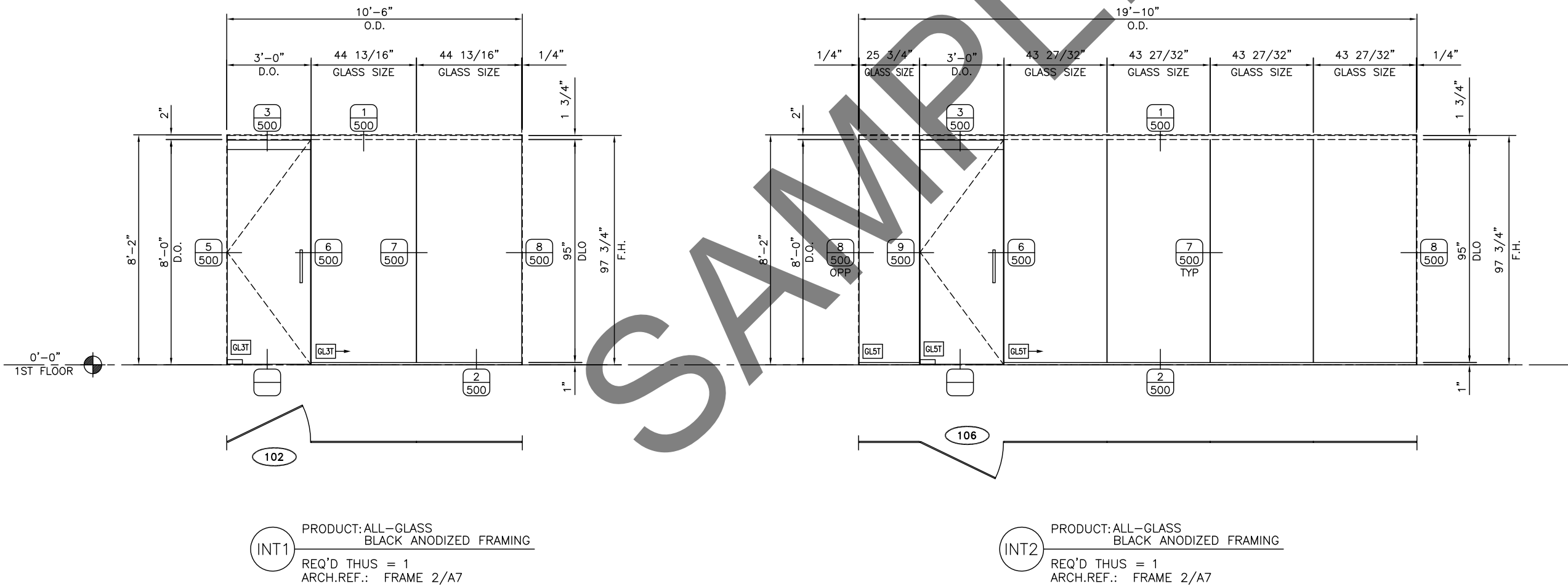


1	11-11-15	DATE
1	SE	BY
1	SE/KL	REV #

REVISED PER FIELD DIMENSIONS	DESCRIPTION:
FABRICATION	PRINTS ISSUED FOR:
1ST APPROVAL	

12/22/2016 11:16:55 AM
SS:\WEB SITE\SAMPLE JOBS\DELTA HAWK ENGINEERING\300 INTERIOR ELEVATIONS.DWG

OVERALL DIMENSIONS ARE APPROXIMATE  
AND ARE TO BE FIELD VERIFIED.

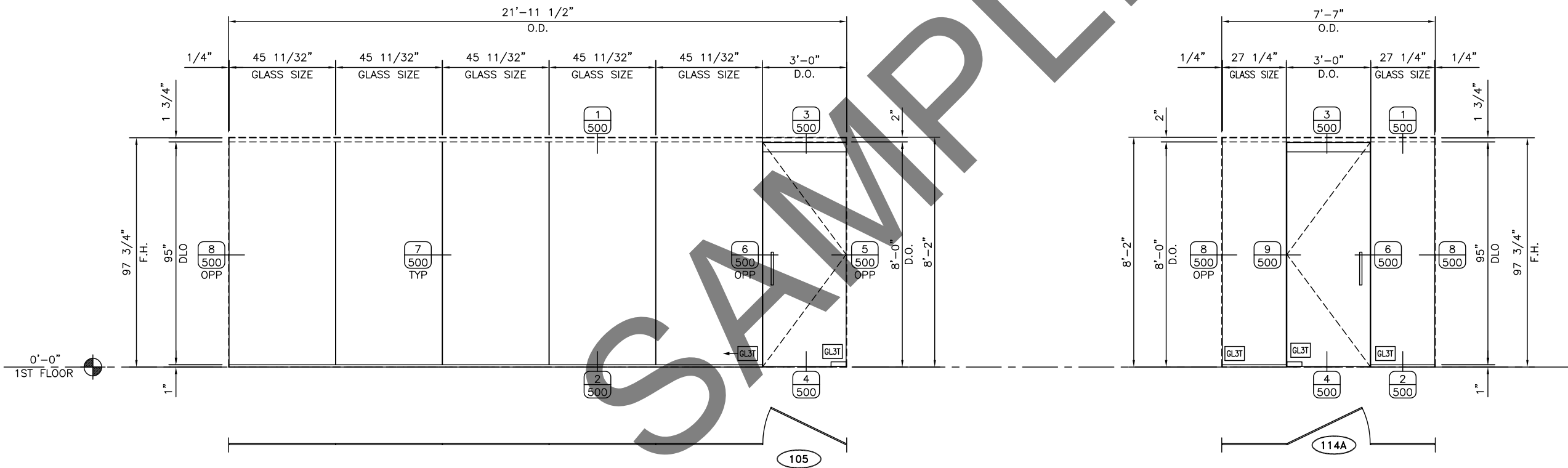




REV #	BY	DESCRIPTION
1	SE	REVISED PER FIELD DIMENSIONS
1	SE/KL	FABRICATION
1	SE/KL	1ST APPROVAL
1	SE/KL	PRINTS ISSUED FOR:

12/22/2016 11:15:59 AM
SS:\WEB SITE\SAMPLE JOBS\DELTA HAWK ENGINES\300\INTERIOR ELEVATIONS.DWG
SHEET NO:
301

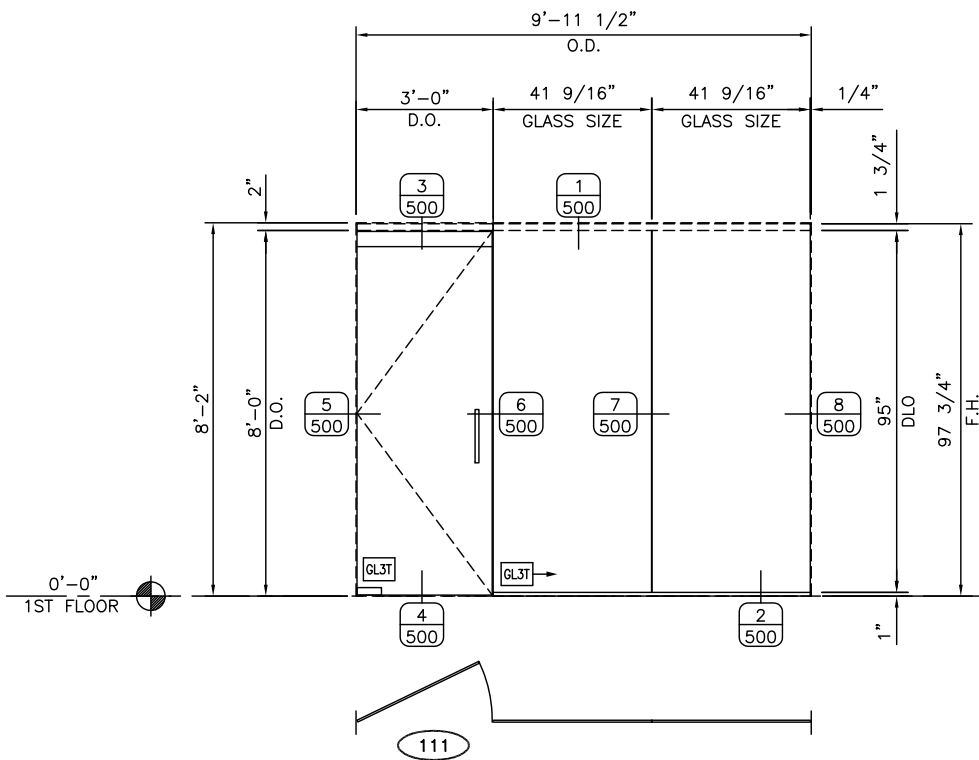
OVERALL DIMENSIONS ARE APPROXIMATE  
AND ARE TO BE FIELD VERIFIED.



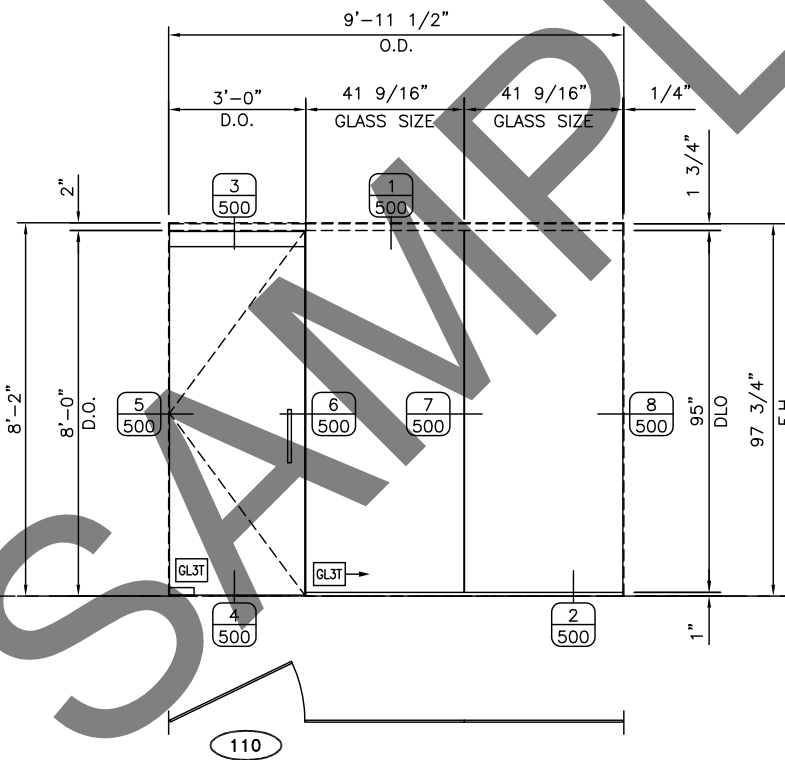
INT3 PRODUCT: ALL-GLASS  
BLACK ANODIZED FRAMING  
REQ'D THUS = 1  
ARCH. REF.: FRAME 2/A7

INT4 PRODUCT: ALL-GLASS  
BLACK ANODIZED FRAMING  
REQ'D THUS = 1  
ARCH. REF.: FRAME 5/A7

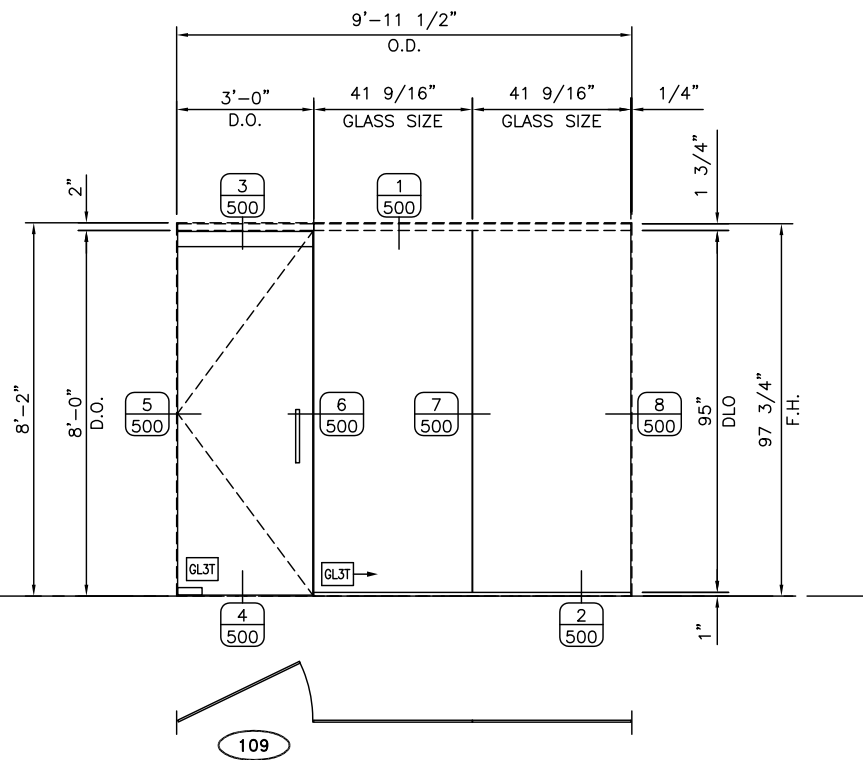
OVERALL DIMENSIONS ARE APPROXIMATE  
AND ARE TO BE FIELD VERIFIED.



PRODUCT: ALL-GLASS  
BLACK ANODIZED FRAMING  
REQ'D THUS = 1  
ARCH. REF.: FRAME 2/A7



PRODUCT: ALL-GLASS  
BLACK ANODIZED FRAMING  
REQ'D THUS = 1  
ARCH. REF.: FRAME 2/A7



PRODUCT: ALL-GLASS  
BLACK ANODIZED FRAMING  
REQ'D THUS = 1  
ARCH. REF.: FRAME 2/A7

DRAWN BY:  
XK CURTAINWALL  
SPECIALISTS  
Ph: 479-756-1814 FAX: 866-662-4821  
SHOPDRAWINGS@XKCURTAINWALL.COM  
WWW.XKCURTAINWALL.COM

REV #	BY	DATE	DESCRIPTION
1	SE	11-11-15	REVISED PER FIELD DIMENSIONS
1	SE/KL	10-07-15	FABRICATION
1	SE/KL	10-07-15	1ST APPROVAL
1	SE/KL	10-07-15	PRINTS ISSUED FOR:

SHEET NO:

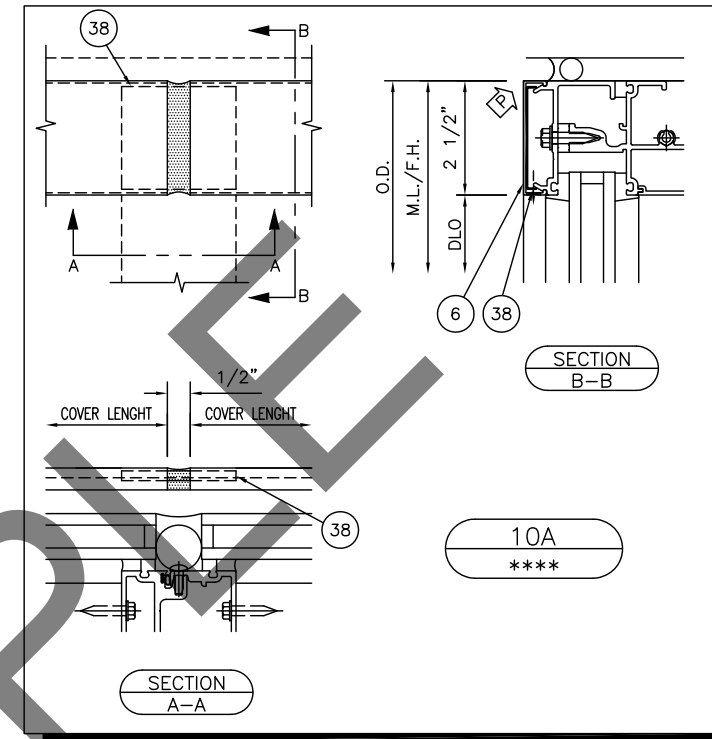
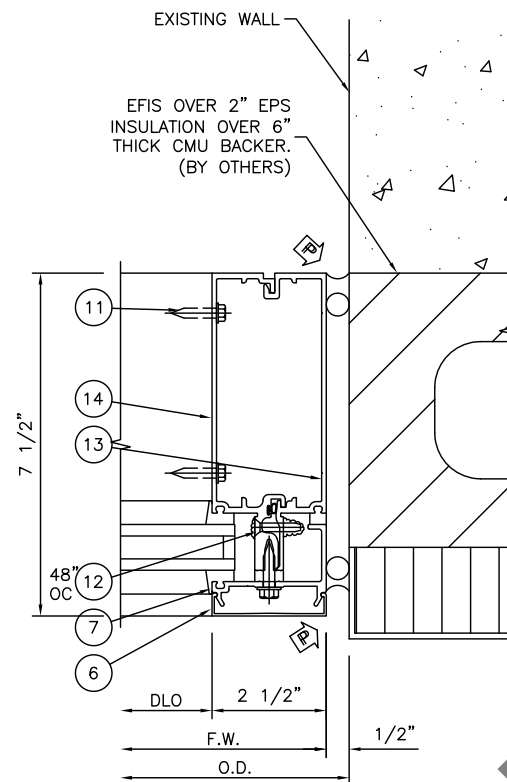
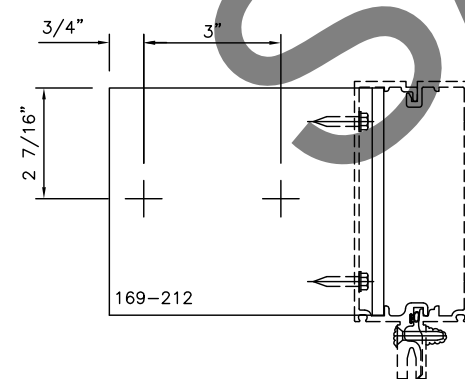
302

S:\WEB SITE\SAMPLE JOBS\DELTA HAWK ENGINES\300 INTERIOR ELEVATIONS.DWG 12/22/2016 11:19:04 AM

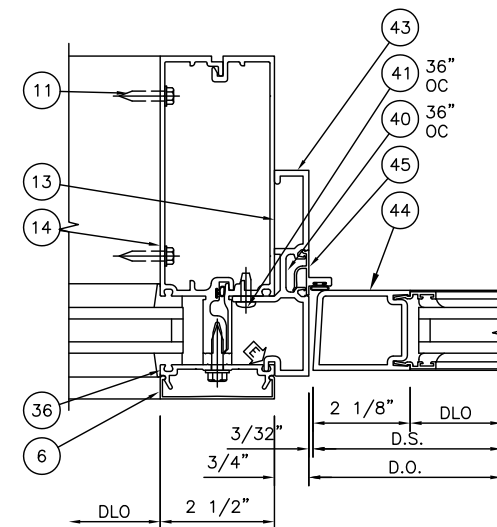






[illegible]

JAMB ANCHOR LAYOUT  
169-212  
DETAIL(S):  
9/403

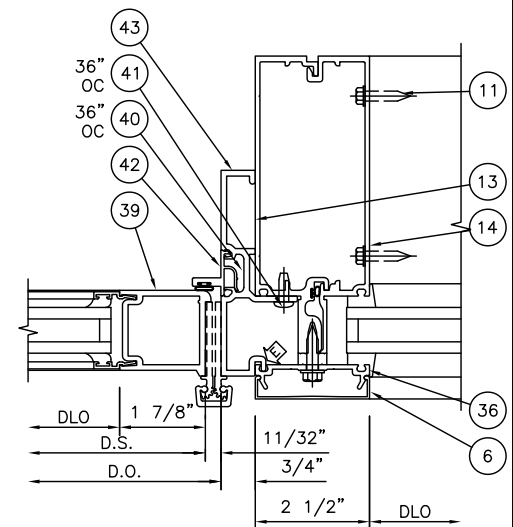


---

12

---

\*\*\*\*

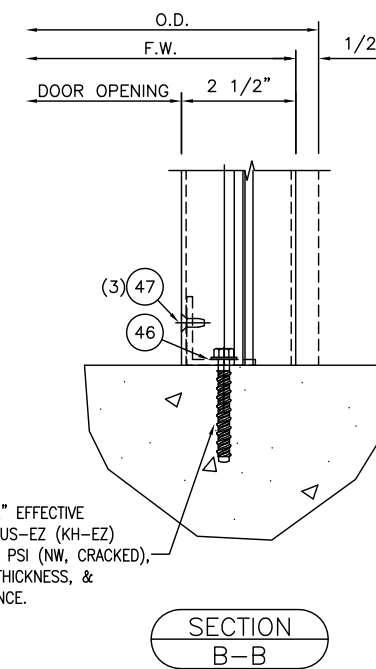
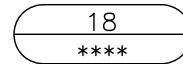
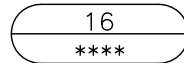
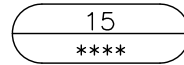
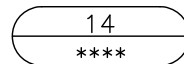


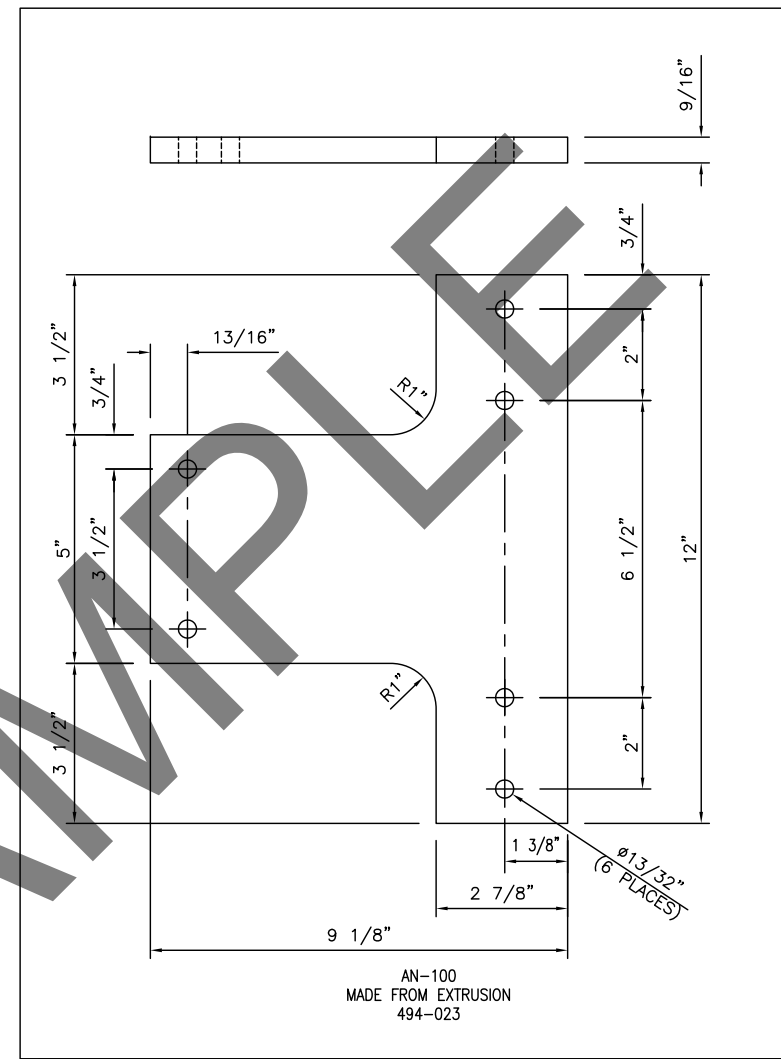
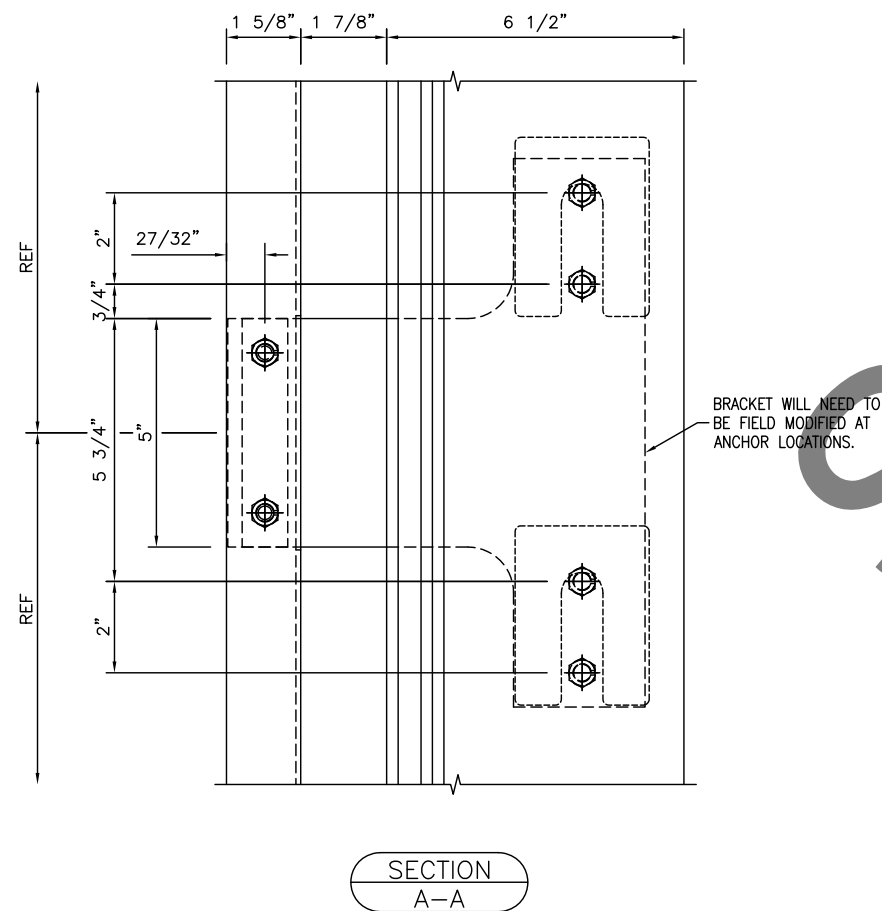
---

13

---

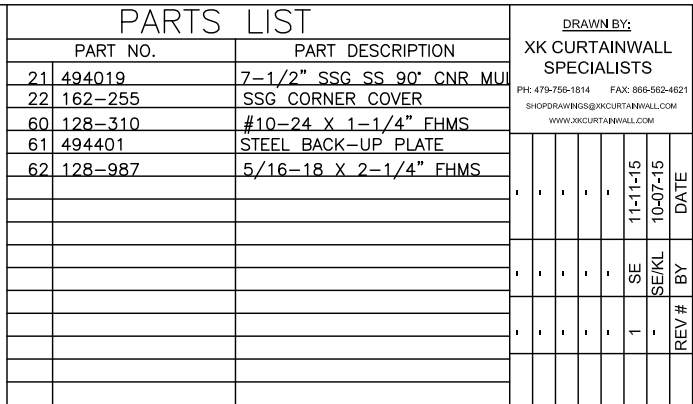
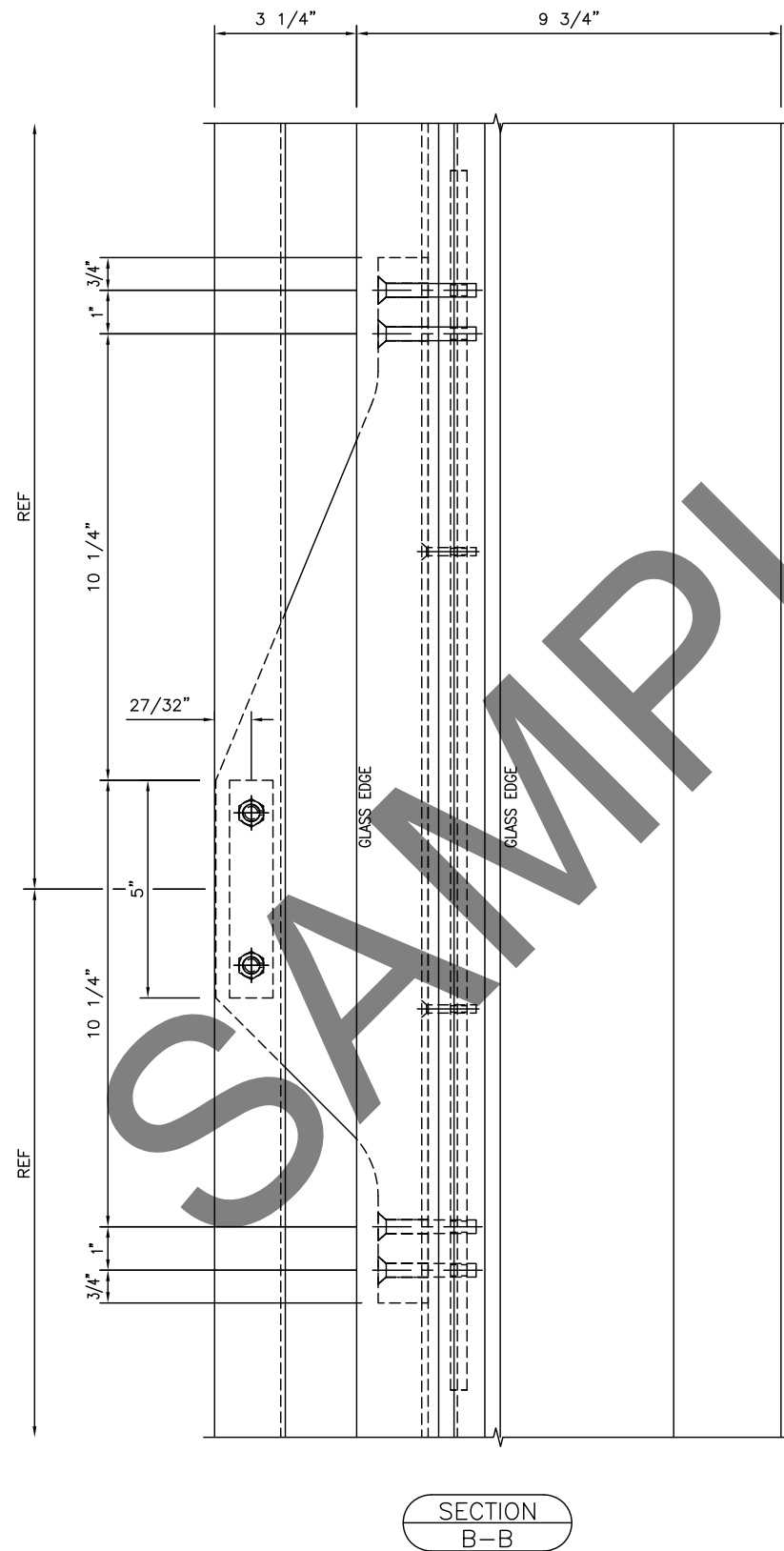
\*\*\*\*

[illegible]

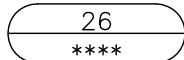
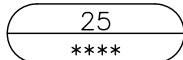
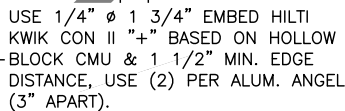
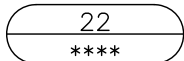
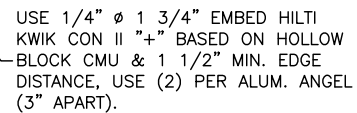
[illegible]

SHEET NO:  
405

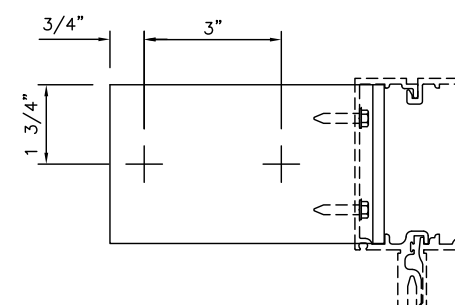


[illegible]

406



JAMB ANCHOR LAYOUT  
169-211  
DETAIL(S):  
21/407; 24/407

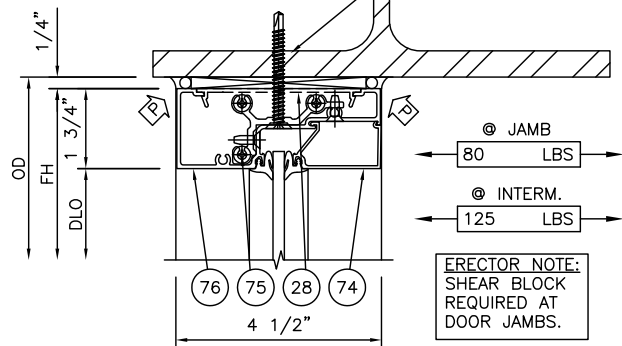


JAMB (OPP) ANCHOR  
LAYOUT  
169-211  
DETAIL(S):  
21/407; 24/407

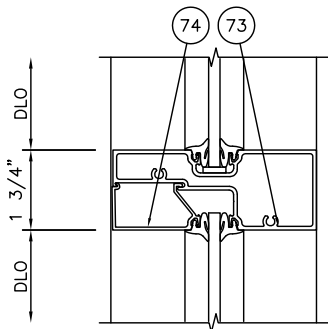
[illegible]

SHEET NO:  
407

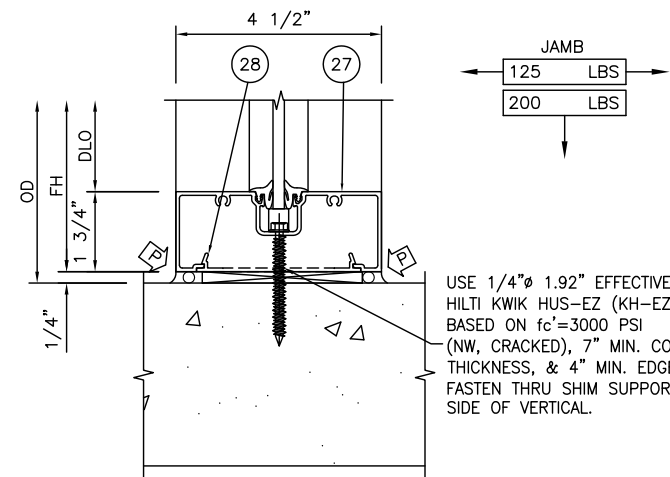
USE 1/4"-20 ELCO DRIL-FLEX FASTEN 3" ON EACH SIDE OF VERTICAL THRU SHIM SUPPORT (DRILL PILOT HOLES TO START FASTENERS)



27  
\*\*\*\*

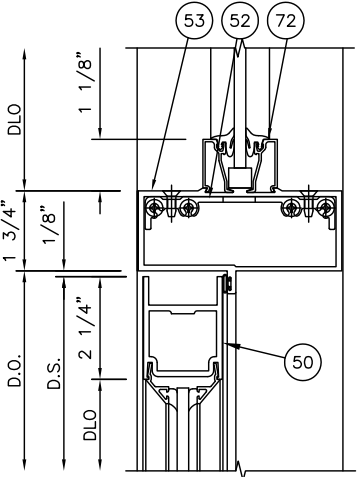


28  
\*\*\*\*

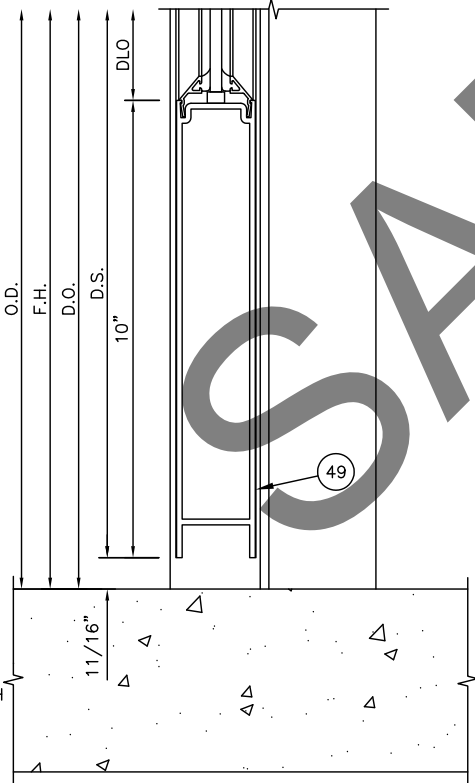


29  
\*\*\*\*

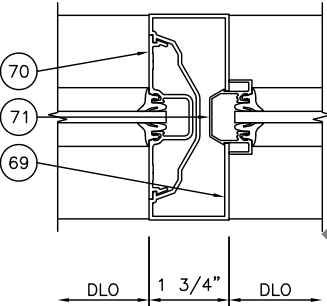
USE 1/4"Ø 1.92" EFFECTIVE EMBED HILTI KWIK HUS-EZ (KH-EZ) BASED ON  $f_c=3000$  PSI (NW, CRACKED), 7" MIN. CONCRETE THICKNESS, & 4" MIN. EDGE DISTANCE, FASTEN THRU SHIM SUPPORT 3" ON EACH SIDE OF VERTICAL.



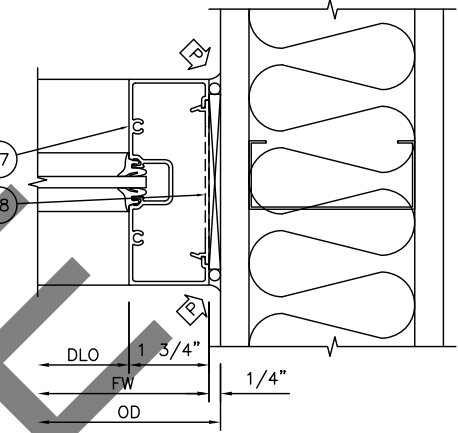
30  
\*\*\*\*



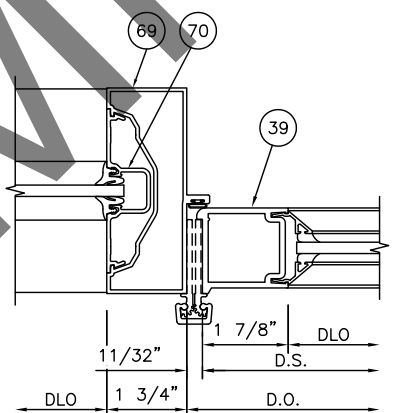
31  
\*\*\*\*



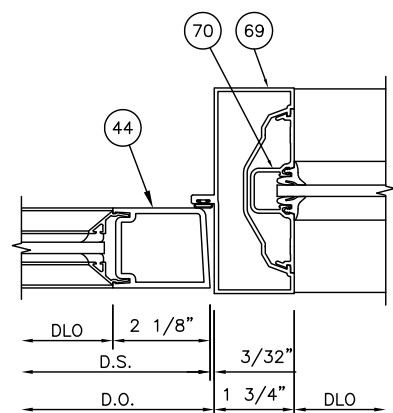
32  
\*\*\*\*



33  
\*\*\*\*



34  
\*\*\*\*



35  
\*\*\*\*

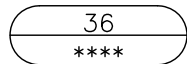
PARTS LIST

PART NO.	PART DESCRIPTION
27	450-CG-001 MULLION/SILL/JAMB
28	450-126 SHIM SUPPORT
39	200-011 "190" CONT. HINGE STILE
44	200-002 "190" LOCK/PIVOT STILE
49	200-038 STANDARD 10" BOTTOM DOOR RAIL
50	200-020 "190" STANDARD 2 1/4" TOP DOOR RAIL
52	450-506 S/A T-BAR/HEADER CLIP PACKAGE
53	450-502 S/A T-BAR/HEADER WITH WEATHERING
69	450-599 S/A OPEN BACK DOOR JAMB WITH WEATHERING
70	450-CG-028 DEEP POCKET FILLER
71	450-033 POCKET INSERT
72	450-022 T-BAR GLASS STOP
73	450-CG-011 TUBE HORIZONTAL
74	450-CG-004 GLASS STOP
75	450-CG-525 SHEAR BLOCK PKG
76	450-CG-003 HEAD

DRAWN BY:	
XK CURTAINWALL SPECIALISTS	
PH: 479-756-1814 FAX: 966-552-4621	
SHOPDRAWINGS@XKCURTAINWALL.COM	
WWW.XKCURTAINWALL.COM	
1	11-11-15
10-07-15	DATE
REV #	BY
DESCRIPTION:	

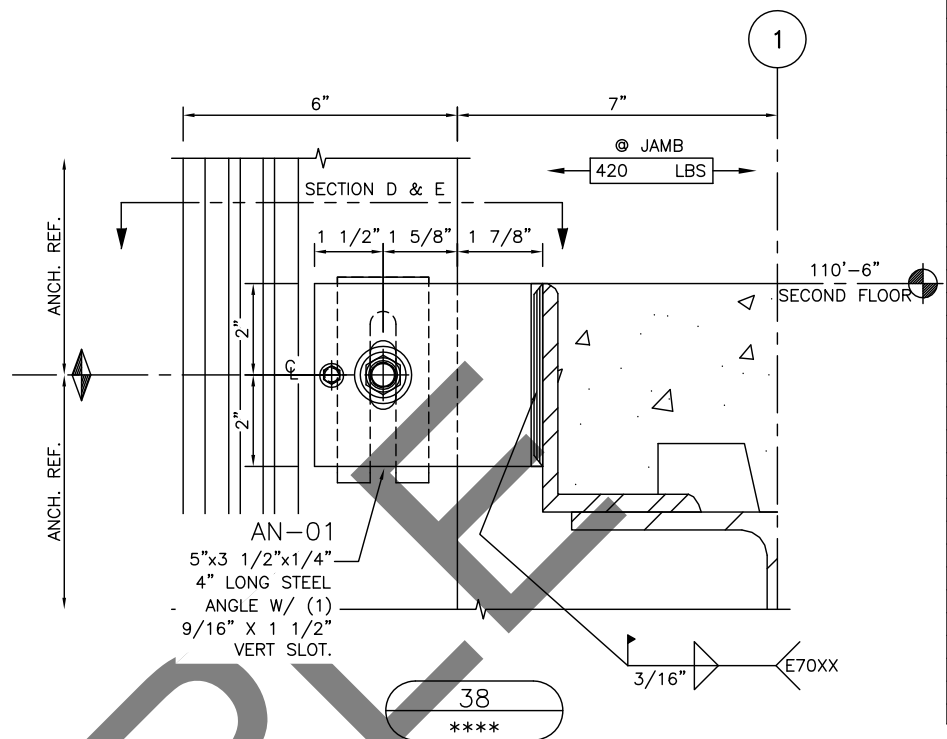
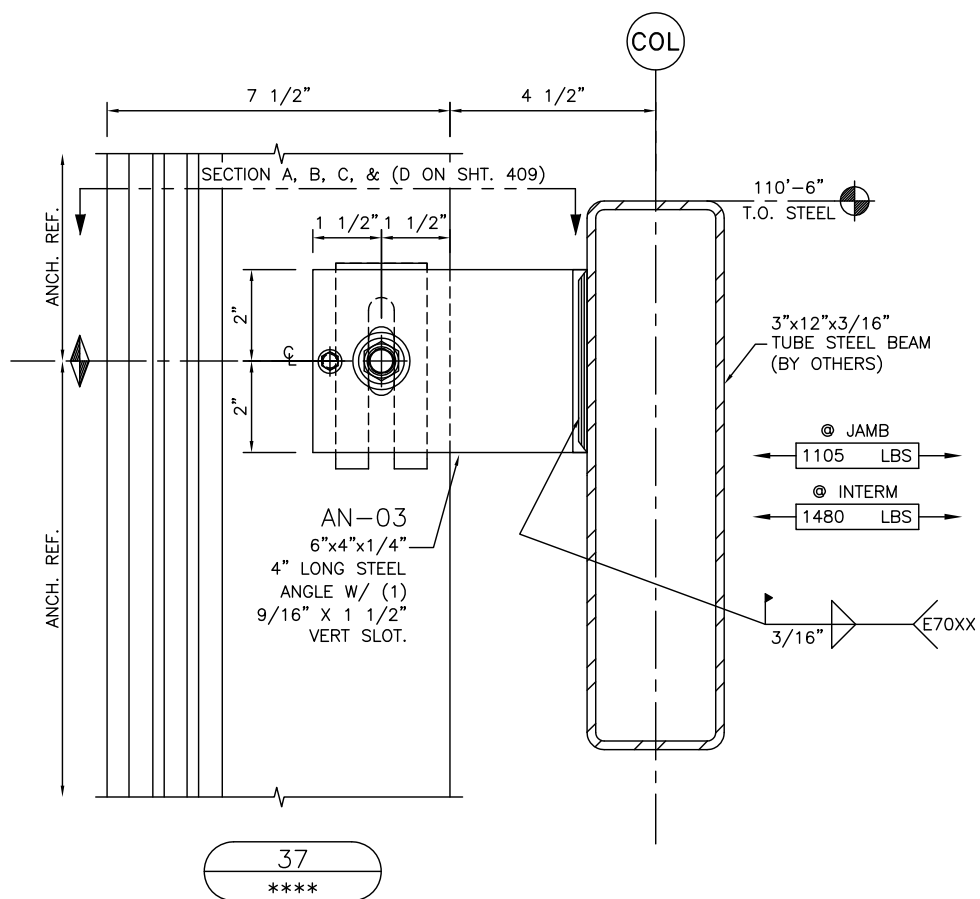
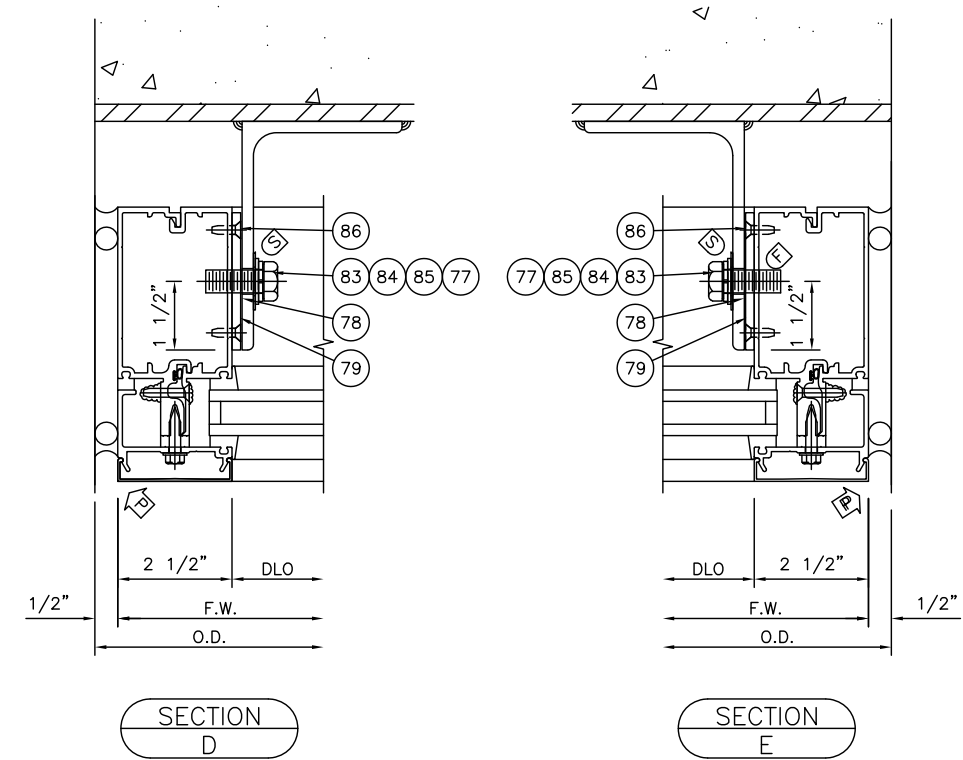
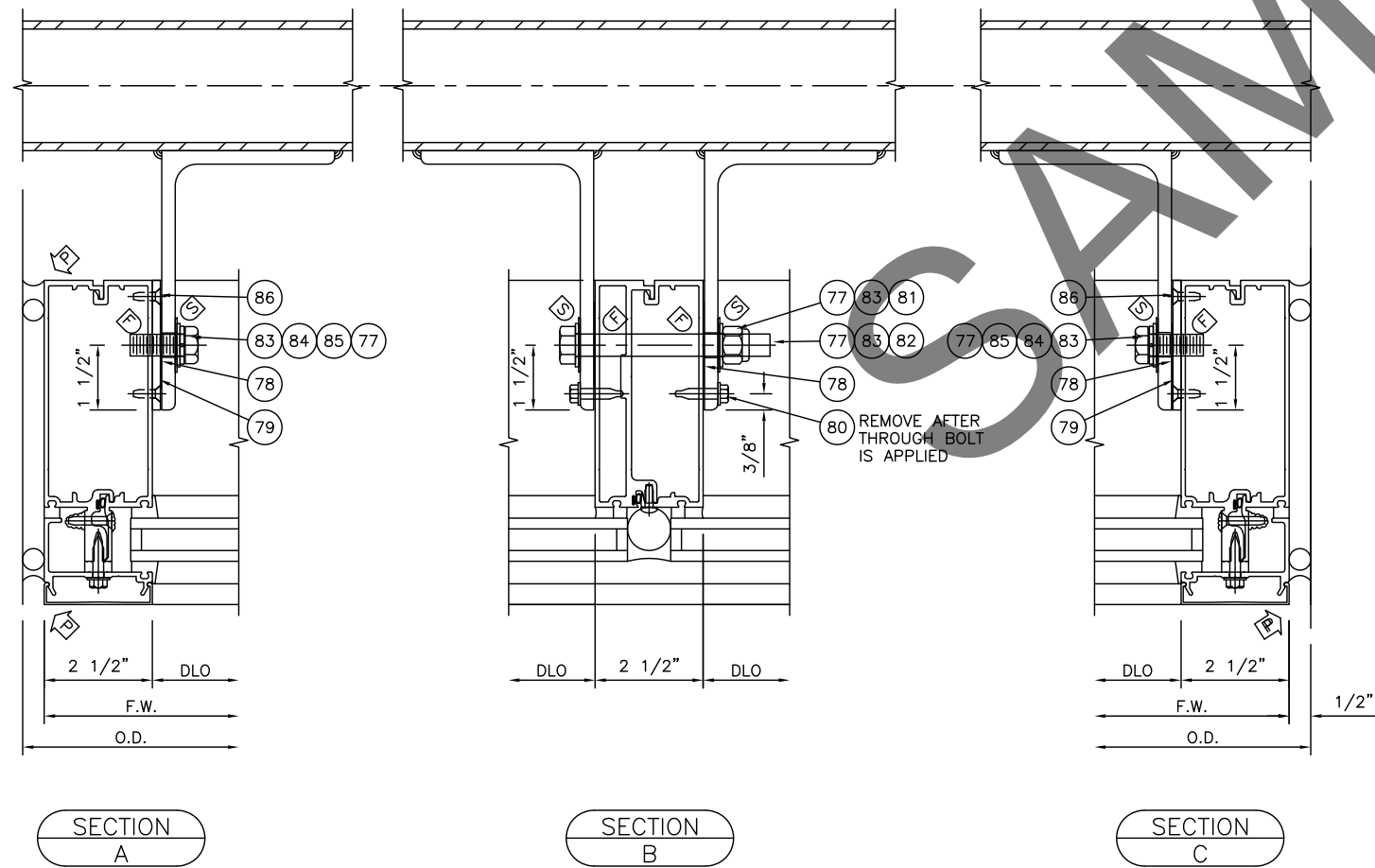
SHEET NO:

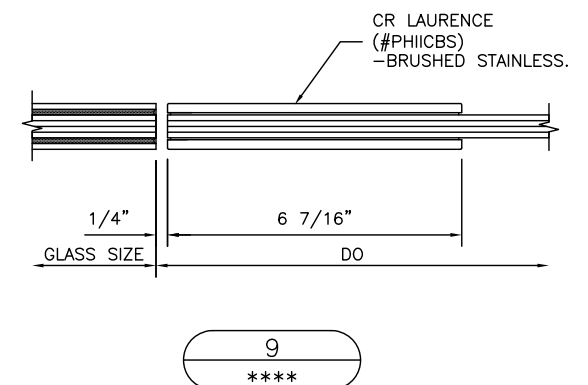
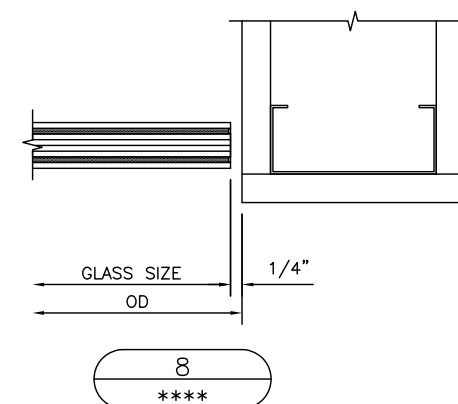
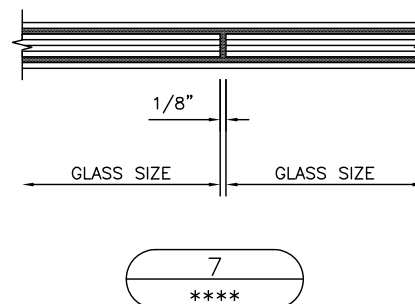
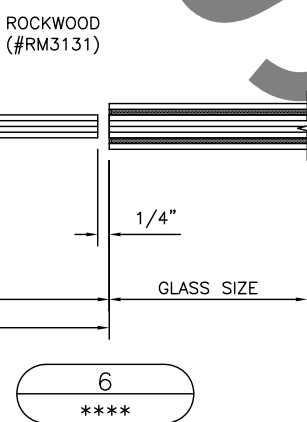
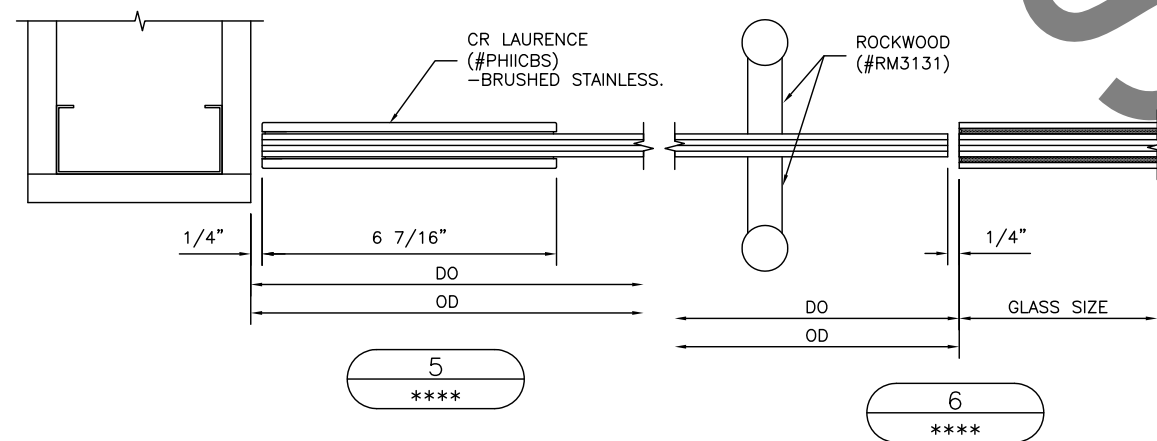
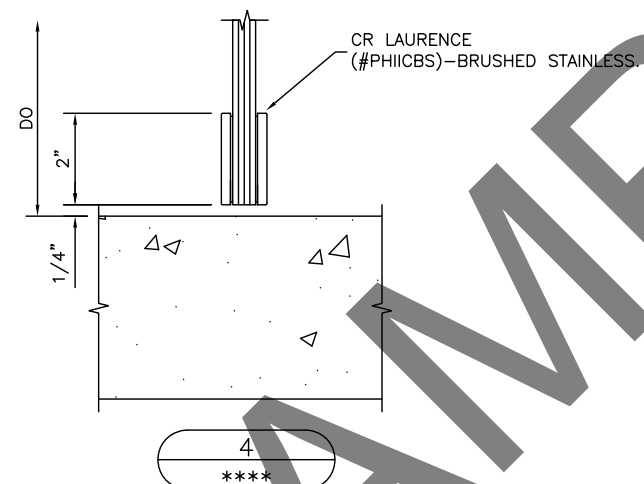
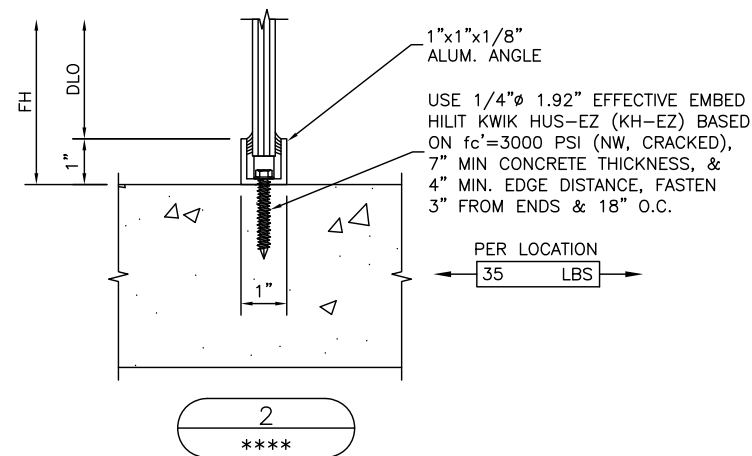
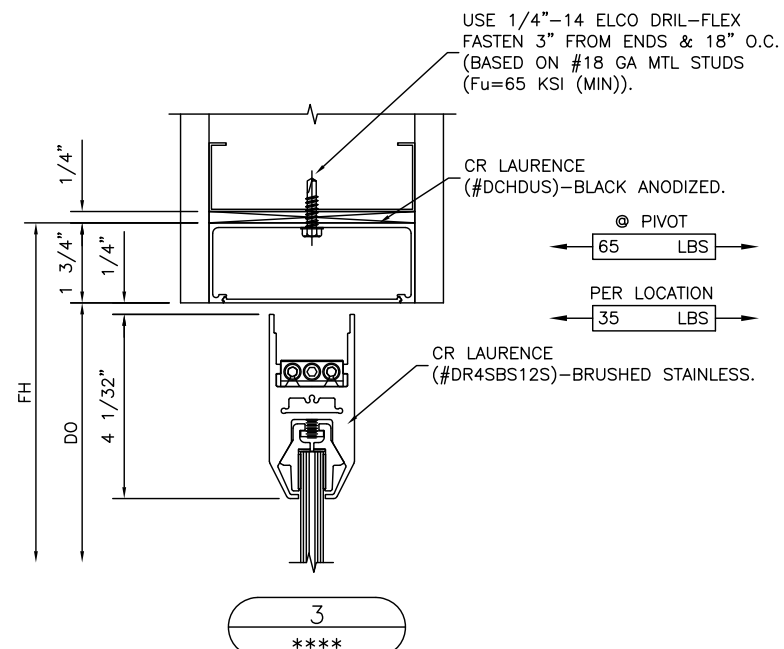
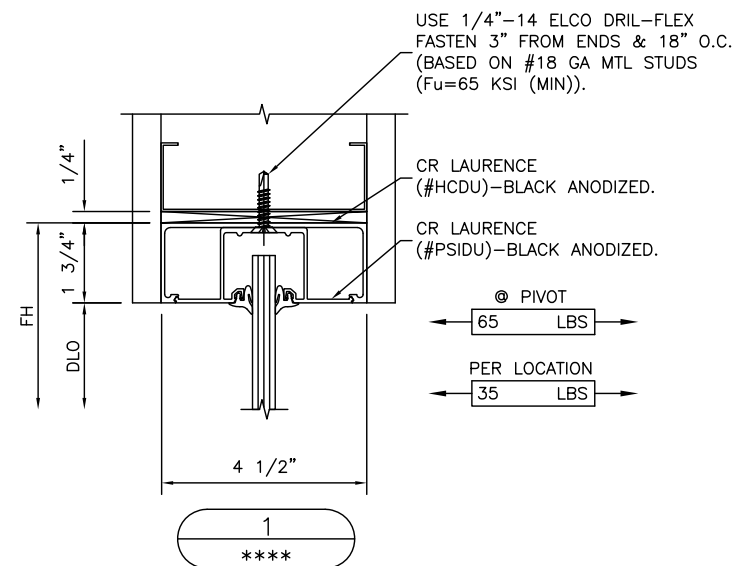
408



DRAWN BY: XK CURTAINWALL SPECIALISTS					
PH: 479-755-1814			FAX: 866-562-4621		
SHOP DRAWINGS@XKCURTAINWALL.COM					
WWW.XKCURTAINWALL.COM					
-	-	-	-	-	-
-	-	-	-	-	-
-	-	-	-	-	-
-	-	-	-	-	-
-	-	-	-	-	-
FABRICATION	REVISED PER FIELD DIMENSIONS	1	SE	11-11-15	
1ST APPROVAL	-		SE/KL	10-07-15	
PRINTS ISSUED FOR:	DESCRIPTION:	REV #	BY	DATE	

S:\WEBSITE\SAMPLE JOBS\DELTA HAWK ENGINES\400-EXTERIOR DETAILS.DWG 12/22/2016 11:19:54 AM

[illegible][illegible]

[illegible]